



Lower Green River Corridor Flood Hazard Management Plan Programmatic EIS

June 2024 Briefing

Choices Before the Board

- Do not act on the PEIS. The Board could decide not to take any action based on the PEIS evaluation.
- Select Alternative 1 to continue the current course of project-by-project development without developing an area-specific Plan.
- Select Alternative 2 and develop an area-specific Plan as framed in the PEIS.
- Select Alternative 3 and develop an area-specific Plan as framed in the PEIS.
- Combine parts of the alternatives to create a “hybrid” Plan.
- Direct development of a new alternative(s).

Legislative History

The Board's relevant legislative history is presented in chronological order:

FCD Resolution 2014-09 (July 2014): Adopted flooding goals and provisional level of protection of 18,800 cubic feet per second (500-year level of protection) for the Lower Green River.

FCD Resolution 2016-05 (February 2016): Directed the preparation of a work plan for a Lower Green River Corridor Flood Hazard Management Plan and for a SEPA PEIS for the Plan and established an Advisory Committee.

FCD Motion 18-01 (April 2018): Initiated the planning process for the Plan in accord with SEPA requirements, and it defined alternatives and flood facility project types.

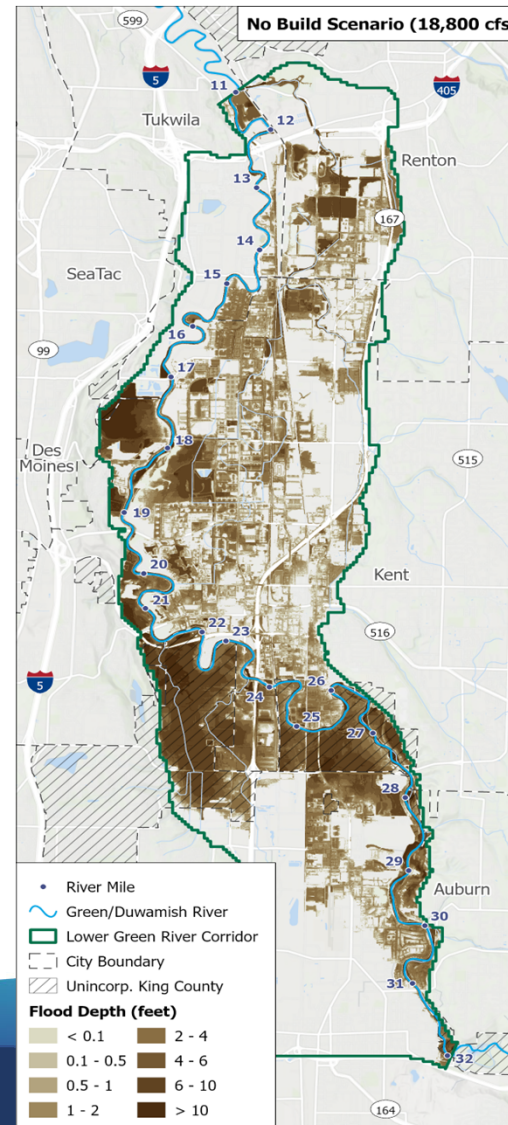
FCD Motion 20-07 (November 2020): Reaffirmed the District's commitment to integrated floodplain management and a set of multibenefits, and convened a committee of governments and interested parties to advise the District on flood management on the Lower Green River.

FCD Motion 21-03 (October 2021): Revised the name of the Plan to the "Lower Green River Corridor Flood Hazard Management Plan" and directed that the PEIS evaluate three new alternatives.

Flood Risk

The Lower Green River Corridor includes river mile 11 to river mile 32 and its associated floodplain.

During a large flood event, much of the Corridor would be flooded.



Protecting the Lower Green River Corridor

The Lower Green River Corridor is home to:



Area Tribes



Over \$37 million in income from businesses of all sizes, including companies like Boeing, Starbucks, REI, IKEA, and Blue Origin



22,000 people living in the Valley and floodplain



Major transportation routes and public facilities, including hospitals and schools



Over 100,000 jobs



Threatened salmon and other aquatic animals



2nd largest industrial park on the West Coast and 3rd largest warehouse and distribution center in the country



Parks, trails, and natural areas



Farming

PEIS Alternatives

Three alternatives are considered in the PEIS. Each alternative takes a different approach to managing flood risk. The PEIS describes potential impacts and ways to reduce or eliminate them.

A No Build scenario illustrates why flood hazard management is needed on the Lower Green River, but this scenario is not evaluated as an alternative in the PEIS.

Alternative 1	CURRENT PRACTICE	• Project-by-Project Multibenefit Implementation
Alternative 2	NEW	• Systematic Multibenefit Implementation
Alternative 3	NEW	• Enhanced Systematic Multibenefit Implementation

Detailed overview of all three alternatives is available at lowergreensepa.org.

Flood Management Can Have Additional Benefits

The District is committed to providing integrated floodplain management and multibenefit projects. The District has defined ten multibenefits. In most cases, these benefits could be realized in collaboration with Tribes, federal and state agencies, local jurisdictions, and interested parties. These are the ten benefits:



**Equity and Social
Justice**



**Environmental
Justice**



**Habitat Protection
and Salmon Recovery**



**Jobs and Sustainable
Livelihoods**



**Open Space
Conservation**



**Productive and
Viable Agriculture**



**Recreation and Other
Opportunities to Connect
People With Nature**



**Resilient
Communities and
Ecosystems**



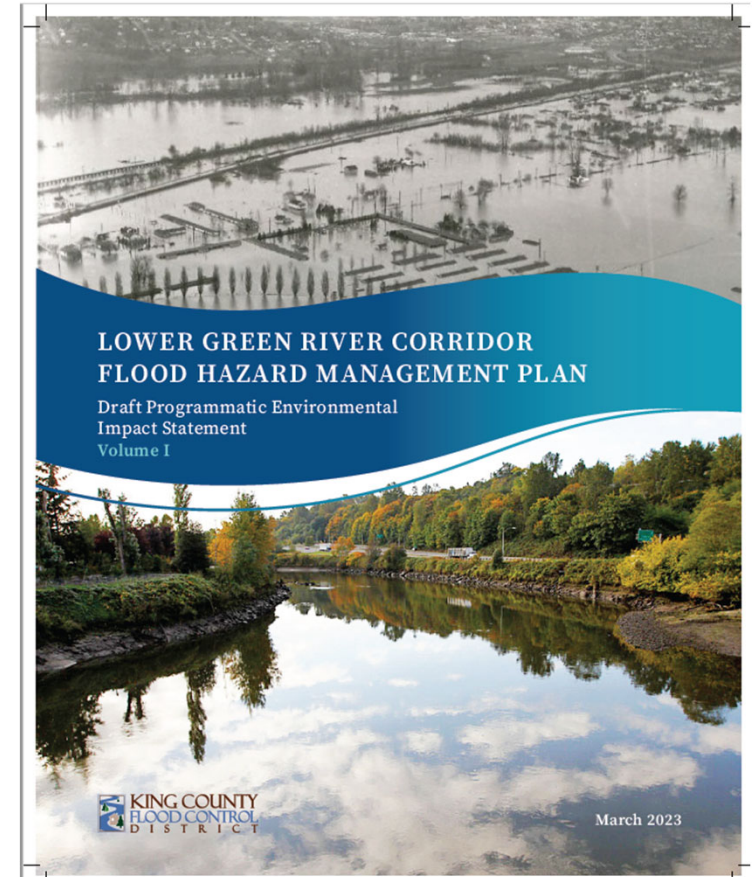
**Sustainable and
Clean Water**



**Sustainable
Development**

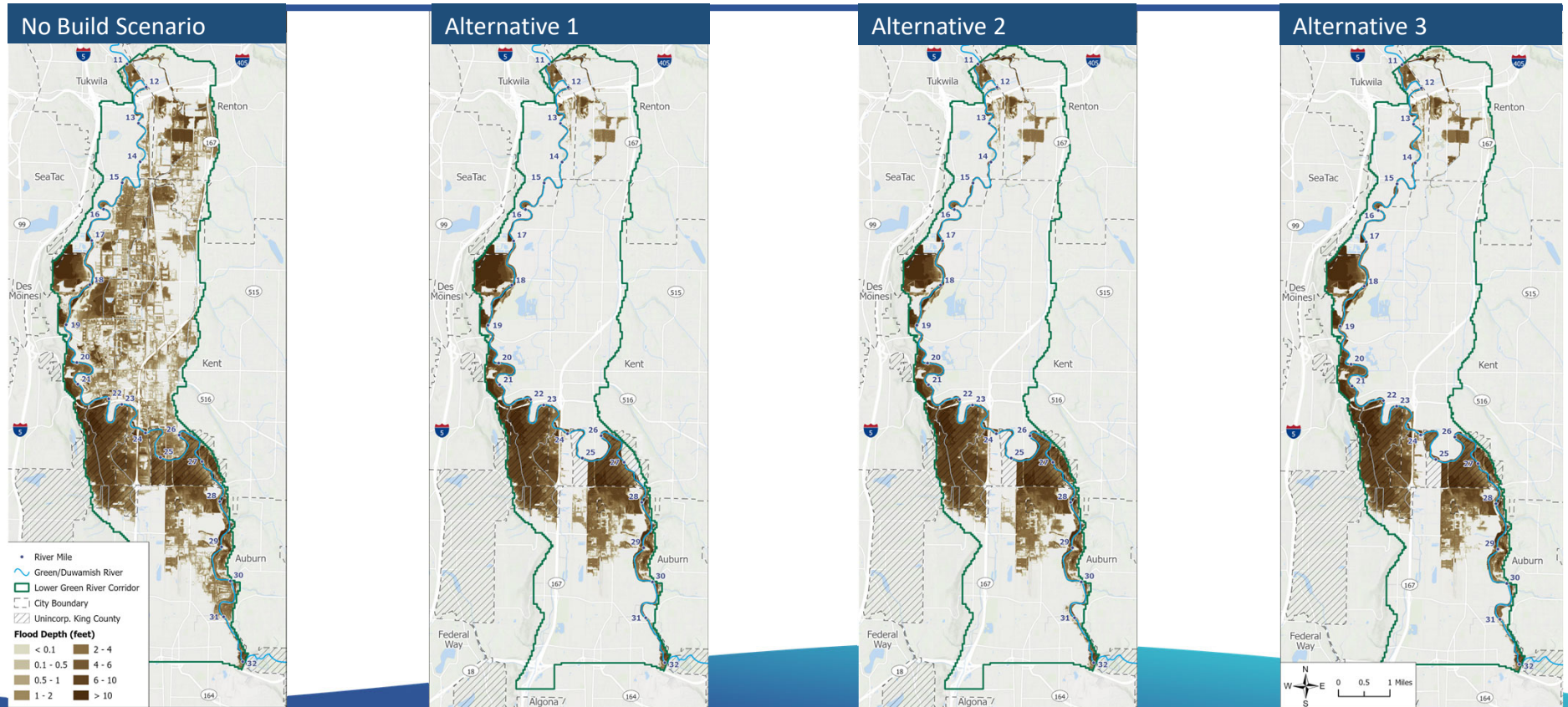
Results of PEIS Evaluations

- Flood Risk Reduction
- Potential Impacts and Benefits
- Planning-level Cost Estimates

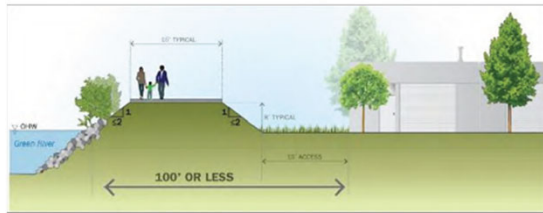


All Alternatives Greatly Reduce Flooding

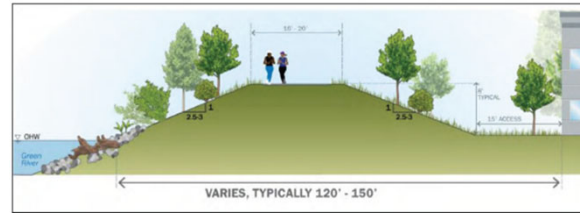
Modeled Flooding at 18,800 cfs (500-year flood event)



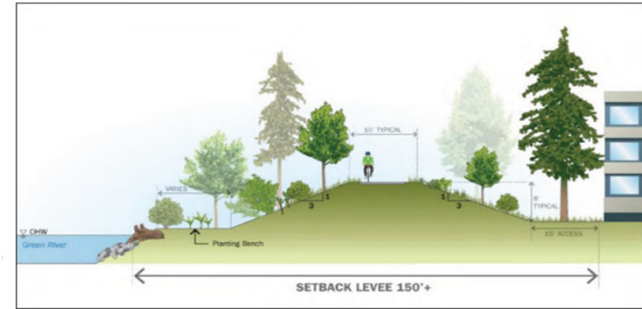
Flood Hazard Management Facility Impacts and Benefits



Source: King County



Source: King County



Source: King County



Source: King County

Lower Russell Road Levee Setback Project

Summary of Potential Impacts, Benefits, Costs

	Alternative 1	Alternative 2	Alternative 3
Flood Risk Reduction	All three alternatives substantially reduce flood risk during an 18,800 cfs (500-year) flood event compared to current conditions with localized variation in depth and extent.		
Impacts	Least impacts to adjacent land uses	Slightly more impacts to adjacent land uses	Most impacts to adjacent land uses
Amount of Space Available for Multibenefits	Least amount of space riverward of facilities for multibenefits	Slightly more amount of space riverward of facilities for multibenefits	Most amount of space riverward of facilities for multibenefits and opportunities for potential flood storage
Costs	\$9.25M to \$19.5M annualized planning-level cost	\$9.75M to \$20.75M annualized planning-level cost	\$14M to \$27.5M annualized planning-level cost
Area-Specific Plan?	No	Yes	Yes

Outreach

APPROACH

- Guided by public outreach plan
- Broad, diverse, inclusive, accessible
- Translated into 8 languages
- Multiple ways to learn and provide feedback


**PUBLIC COMMENT
NOW OPEN FOR THE
LOWER GREEN RIVER
CORRIDOR FLOODING**
DRAFT PROGRAMMATIC
ENVIRONMENTAL
IMPACT STATEMENT

Tell us what you think about flood risk in the Lower Green River Corridor and help shape an important environmental study.

COMMENT PERIOD EXTENDED!
Public comment:
March 20, 2023 to ~~May 4, 2023~~
June 19, 2023

Virtual public meetings: April 19, 2023

[CLICK TO
LEARN MORE](#)

 **KING COUNTY
FLOOD CONTROL
DISTRICT**

516 Third Avenue, Room 1200, Seattle, WA 98104

For translations call (206) 349-6361.

Información disponible en Español; llame al (206) 349-6361.

索取中國人版本的可用資訊; 請撥打 (206) 349-6361.

Để xem thông tin bằng Tiếng Việt, xin gọi (206) 349-6361.

Имеется перевод этой информации на русский язык; обращайтесь по телефону (206) 349-6361.

Macluumaad ku qoran Soomaaliya fadlan wac (206) 349-6361.

한국어로 정보를 확인할 수 있습니다. (206) 349-6361 로 전화하십시오.

Інформація доступна українською мовою. Звертайтеся за номером (206) 349-6361.

Available ang impormasyon sa Tagalog; pakitawagan ang (206) 349-6361.



Direct Engagement

Community Navigators

- Trusted community leaders with cultural, linguistic, and navigational knowledge
- Advise and support engagement
- Tailored plans for specific communities
- Compensate (both navigators and community participants)

Tribal Engagement

- Offers to meet and brief

Public

- Virtual Public Meetings (April 19)
- Postcard mailed to entire corridor
- Draft PEIS available for review at public locations
- News media distribution
- Sharing information with Chambers, community organizations, etc.

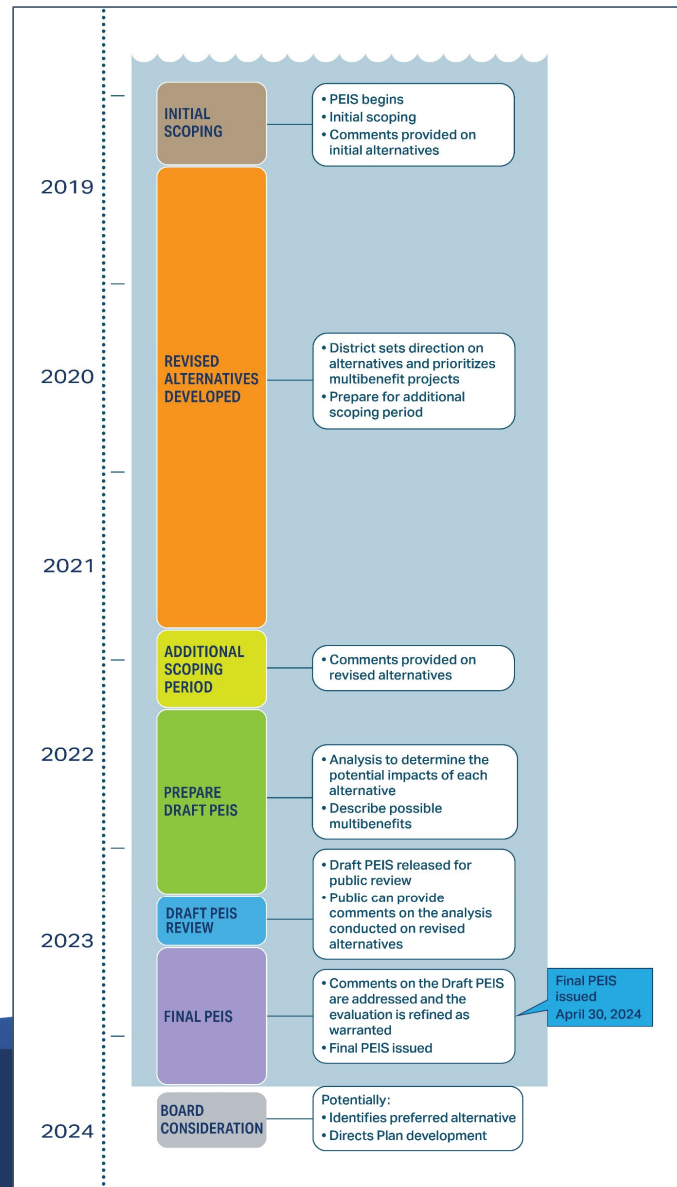
Comments Addressed in the Final PEIS

- 2,478 comment items in seven languages were received on the draft PEIS.
- Comments were from Tribes, agencies, businesses, intergovernmental entities, jurisdictions, non-governmental agencies, and the public.
- None of the comments received changed the impacts, benefits, or costs
- Volume 3 of the final PEIS responds to each comment received.

Overview of What the District Learned

- The District analyzed tradeoffs between scenarios and cumulative impacts and benefits.
- All alternatives substantially reduce flood risk.
- There is broad support for multibenefits and integrated management. The more multibenefits achieved, the higher the cost, the longer the timeframe, and the greater the immediate impacts.

Next Steps



Choices Before the Board

- Do not act on the PEIS. The Board could decide not to take any action based on the PEIS evaluation.
- Select Alternative 1 to continue the current course of project-by-project development without developing an area-specific Plan.
- Select Alternative 2 and develop an area-specific Plan as framed in the PEIS.
- Select Alternative 3 and develop an area-specific Plan as framed in the PEIS.
- Combine parts of the alternatives to create a “hybrid” Plan.
- Direct development of a new alternative(s).

Questions and Discussion