



# Hazardous Waste Management Program

## Management Plan Update

November 18, 2021

Lynda Ransley



# PROGRAM OVERVIEW

**MISSION:** Protect public health and the environment from the risks posed by production, use, storage and disposal of hazardous materials

**SERVICE AREA:** All of King County

**PROGRAM AUTHORIZATION:** Established in 1990  
**State** - WA Department of Ecology  
**County** - King County Board of Health (BOH)

**REGIONAL PROGRAM:** Carry out responsibilities and provide compliance for all jurisdictions in King County.

## MANAGEMENT PLAN

- Complies with state regulations
- Reflects current research, materials, exposures, needs
- Guides operations and services



# STRUCTURE & FUNDING

## OVERSIGHT BOARD:

- Management Coordinating Committee (MCC)
- Representatives from each of the coalition partners

## MULTI-AGENCY OPERATIONS

- Lines of Business are carried out by multi-agency teams
- Staff (appx. 70 FTE) are embedded in four partner agencies
- Program provides funding to the implementing partners

## FUNDING:

- Funding structure was established by the Board of Health in 1990;
- Surcharges on solid waste and wastewater
- Budget appx. \$21.6 M/yr.
- BOH last set rates for 2019-2022.
- No rate adjustment will be requested for the 2023-24 biennium.



# SERVICES

## WHO WE SERVE

2.2 million residents  
and 60,000 businesses  
in King County

## WHAT WE DO

Reduce human and  
environmental  
exposures from  
hazardous materials

Operate and deliver  
effective services that  
are relevant and  
racially equitable

## Disposal



Services at  
collection facilities,  
Wastemobile and  
city and tribal  
collection events

## Prevention



Business and  
residential programs  
to increase  
awareness, best  
practices, and safer  
alternatives

## Policy



Changing systems  
to reduce  
exposures and  
increase producer  
responsibility

# MANAGEMENT PLAN UPDATE

- Program operates under a **Management Plan**, approved by WA ECY
- First written in 1990 and updated periodically; last updated in 2010
- Program has completed an update for 2021
- Reflects changes in service area, demographics, hazardous materials, best practices, and lessons learned
- Designed to guide the Program for the next 10 years

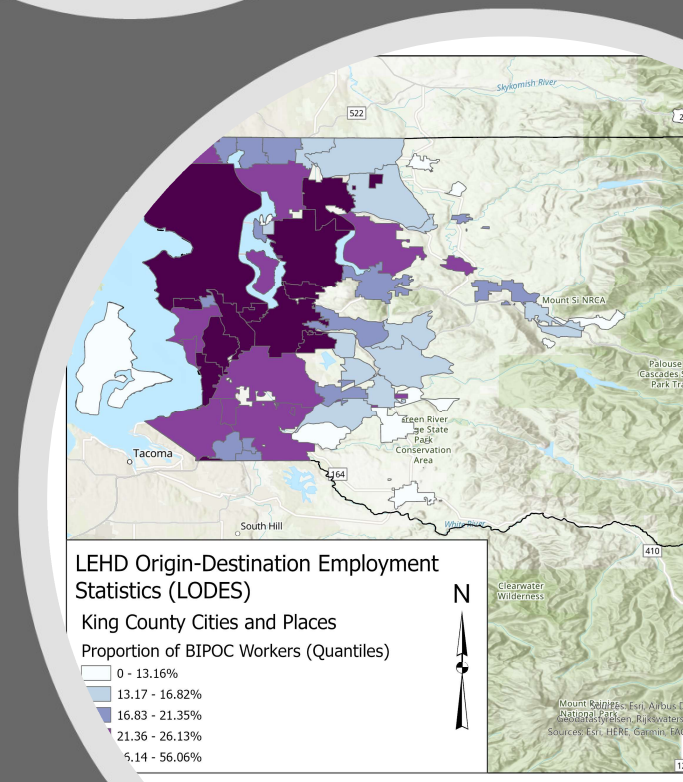


## Hazardous Waste Management Plan **2021** PLAN

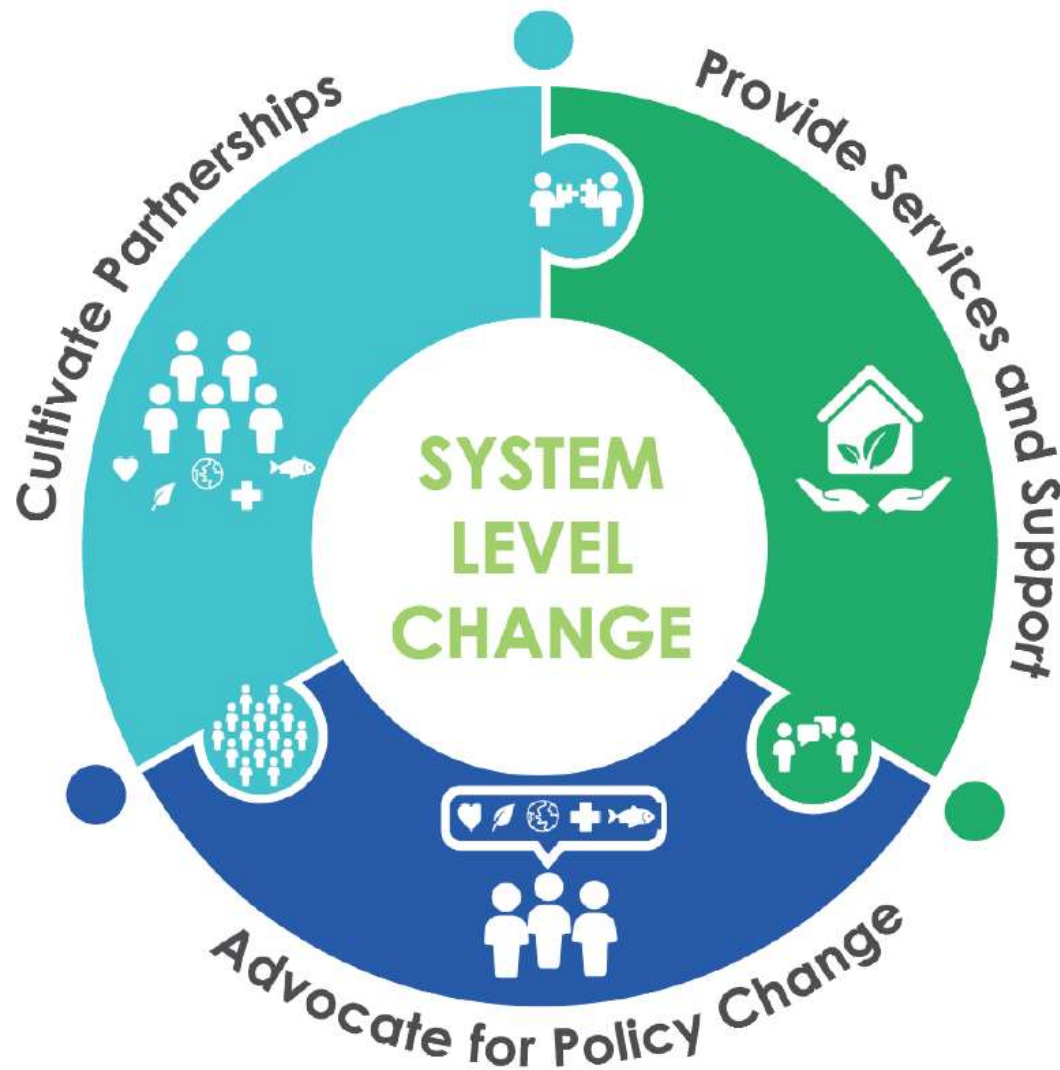


DRAFT FOR MCC APPROVAL





# HOW THE MANAGEMENT PLAN UPDATE WAS INFORMED



# Management Plan Update

## *THEORY OF SERVICE*

# PLAN UPDATE– GOAL AREAS



## **Goal Area 1: Protect people and the environment from hazardous materials.**

- Example: Advance Extended producer responsibility initiatives



## **Goal Area 2: Focus our efforts on our most impacted communities – both at home and at work.**

- Example: Serve communities in their language and culture



## **Goal Area 3: Be good stewards of Program resources.**

- Example: Evaluate and manage performance



# PLAN UPDATE - IMPLEMENTATION

## Years 1-3

- Continue current services.
- Understand underlying causes and priorities.
- Design approaches with BIPOC communities and partners.

## Years 4-7

- Align and pilot new ideas based on learnings from years 1-3.
- Advance policy initiatives.
- Evaluate our performance.

## Years 8-10

- Adaptively manage to keep our work effective.

# REQUEST TO THE BOARD OF HEALTH

- Proposed Resolution - to approve the *Management Plan Update* for submittal to the WA Department of Ecology
- Questions?