

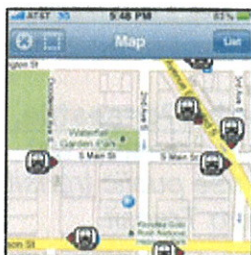


App Center

Check out the apps and mobile tools developers have built that use Metro Transit data!

Independent developers are hard at work creating new apps and web sites using Metro's transit data. Below are some of these free and commercial applications.

King County provides links to third-party applications and sites that use King County data for informational purposes to the general public. King County does not warrant or support these applications or sites. King County does not endorse or sponsor these sites. King County is not affiliated with or associated with these organizations. The content and views expressed on these sites are not those of King County's. You access these links and applications at your own risk, and neither King County nor any of its employees or agents shall be liable for your use of these links and applications nor shall be liable for the accuracy of the information or any actions taken as a result.



OneBusAway

<http://onebusaway.org/> (<http://onebusaway.org/>)

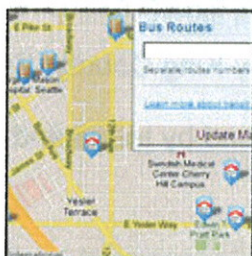
OneBusAway provides easy access to real-time transit information for King County Metro.

For Web browsers and various mobile devices, including Mobile Web and apps for iPhone and Android.

Congratulations, [OneBusAway \(http://onebusaway.org/\)](http://onebusaway.org/)!

Washington Technology Industry Association 2010 Industry Achievement Award

(<http://www.washingtontechnology.org/iaa2010/default.asp>) Winner.



Estately.com

<http://www.estately.com/WA/Seattle>

(<http://www.estately.com/WA/Seattle>)

Allows users to search for homes near transit stops.

For Web browsers

Google Maps

<http://maps.google.com> (<http://maps.google.com/>)

Offers trip planning, bus stops and transit maps.