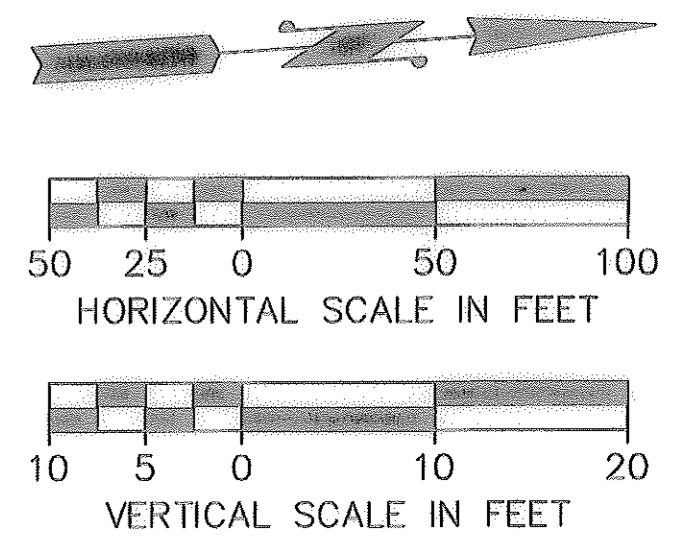
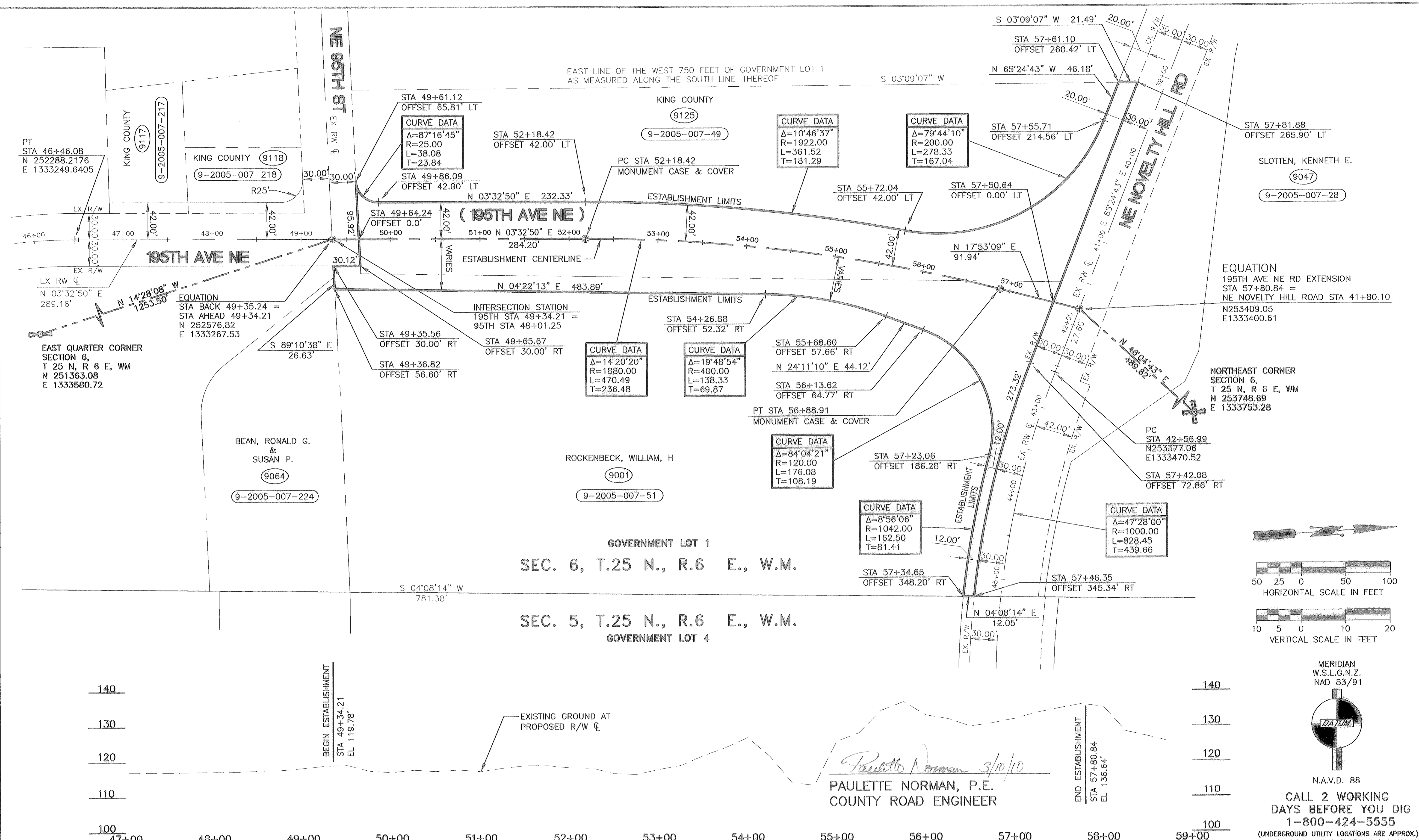
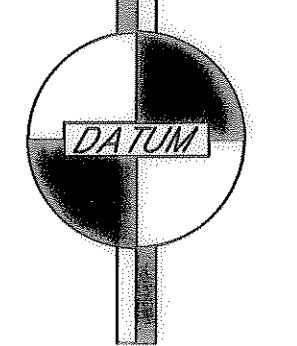


\\red-dwart2\proj\100992-Novelt Hill Transportation Improvement\Development-Design Work\CAD\DESIGN CAD\ROW\1 RW ESTABLISHMENT\100992-RDPP-ESTABLISH.dwg, ESTABLISHMENT\_50\_3/10/2010 10:04:32 AM, drafter, DWG6 ePlot.pc3, ANSI, full bleed B (11.00 x 17.00 inches)

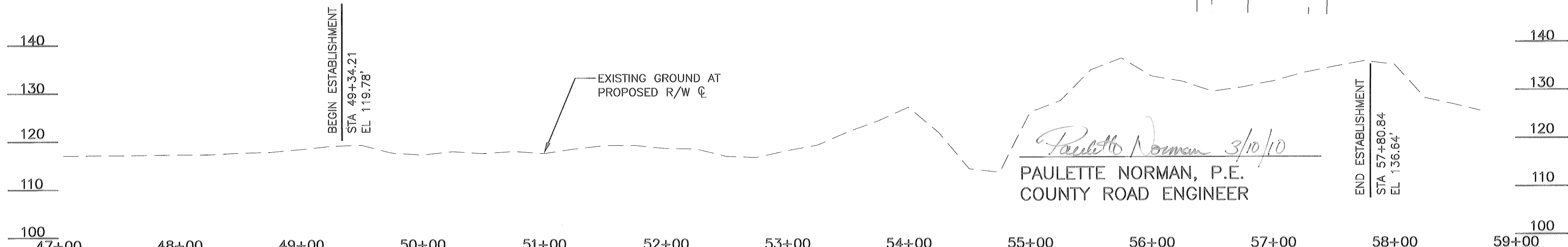


MERIDIAN  
 W.S.L.G.N.Z.  
 NAD 83/91



N.A.V.D. 88

**CALL 2 WORKING DAYS BEFORE YOU DIG**  
 1-800-424-5555  
(UNDERGROUND UTILITY LOCATIONS ARE APPROX.)

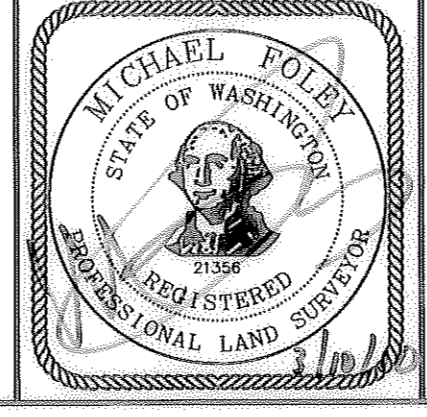


*Paulette Norman 3/10/10*  
**PAULETTE NORMAN, P.E.**  
 COUNTY ROAD ENGINEER

FIELD BOOK:	J. EVANS	4/2008
SURVEYED:	04083A	4/2008
DESIGN ENTERED:	D. RADA	03/2010
DESIGNED:	M. FOLEY	03/2010
CHECKED:	NORMAN / FOLEY	03/2010
SUPERVISOR:	M. FOLEY	03/2010

NUM.	REVISION	BY	DATE

FED. AID No. \_\_\_\_\_  
 PROJECT No. 100992  
 SURVEY No. 6-25-6-10  
 MAINTENANCE DIVISION No. 1



KING COUNTY DEPT. OF TRANSPORTATION  
 HAROLD TANIGUCHI, DIRECTOR  
**NORTHEAST NOVELTY HILL ROAD**  
**PHASE 1**  
 195TH AVE NE ROAD EXTENSION  
 ESTABLISHMENT PLAN  
 STA 49+34.21 THRU STA 57+80.84

SHEET  
 1  
 OF  
 1  
 SHEETS  
**King County**  
**316-34 (385)**