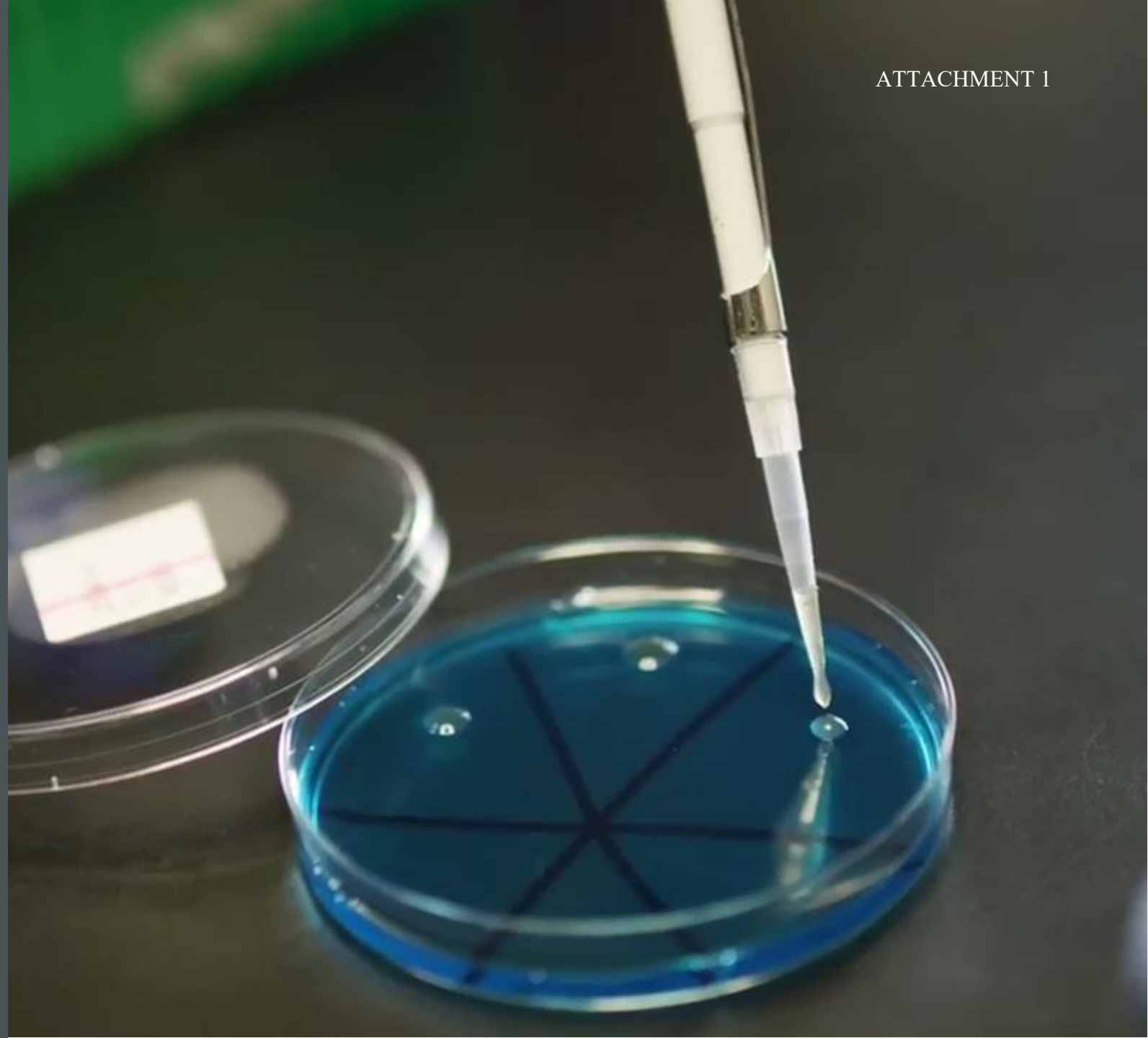


# COVID SEWER SURVEILLANCE

Rebecca Singer  
Resource Recovery Manager  
Wastewater Treatment Division

Presented to the Regional Water  
Quality Committee

February 3, 2021



## WHY SEWER SURVEILLANCE?

- Monitor wastewater for contaminants and the presence of pathogens
- Allows for monitoring local populations for viruses such as SARS-Co-V-2
- Can be an indicator of changes in COVID-19 within a community
- Provides data trends to inform Public Health

### **Limitations:**

- Not a predictor for number of infections
- Limited to communities hooked up to sewer
- Not well understood yet
- Not all plants are appropriate for testing (i.e.. where pre-treatment occurs)

# CURRENT WORK

Activity	Description	Outcome
Weekly influent wastewater sample collection.	University of Washington (UW) continued with analytical method development.	Updated analytical results from treatment plant sampling provided by UW.
King County Wastewater Treatment Division (WTD) - Scope of Work and Level of Effort submittal.	A scope of work and level of effort was developed for WTD's support of sewer surveillance pilot program by UW.	Reviewed by WTD Director's Office and approved.
Centers for Disease Control and Prevention (CDC) National Surveillance Program.	CDC developing national surveillance program for COVID-19 sewer monitoring.	King County data provided to Washington State Department of Health (DOH) and UW will be shared by those entities with CDC, allowing other jurisdictions to work directly with CDC.
WA SARS-CoV-2 Wastewater Surveillance Coordination Network – Washington State DOH.	Participated in kick-off meeting of the Coordination Network convened by Washington State DOH.	Discussed current and future activities. Planning for future Steering Committee meeting.

## NEXT STEPS

1. Support ongoing sampling for UW per existing approved sample request and request update on analytical results.
2. Participation in update meetings with DOH on sewer surveillance, as needed.
3. Participation in Washington State DOH Wastewater Surveillance Coordination network.
4. Confirm approval of scope of work and level of effort for WTD work groups for participation in sewer surveillance piloting.
5. Track on-going research through Water Research Foundation, U.S. Environmental Protection Agency, CDC, and National Institutes of Health.
6. Work with King County Environmental Laboratory staff to develop in-house virus analytical methodology.

# QUESTIONS?

REBECCA SINGER

[REBECCA.SINGER@KINGCOUNTY.GOV](mailto:REBECCA.SINGER@KINGCOUNTY.GOV)

206-477-5600