




2021 Precinct Alterations


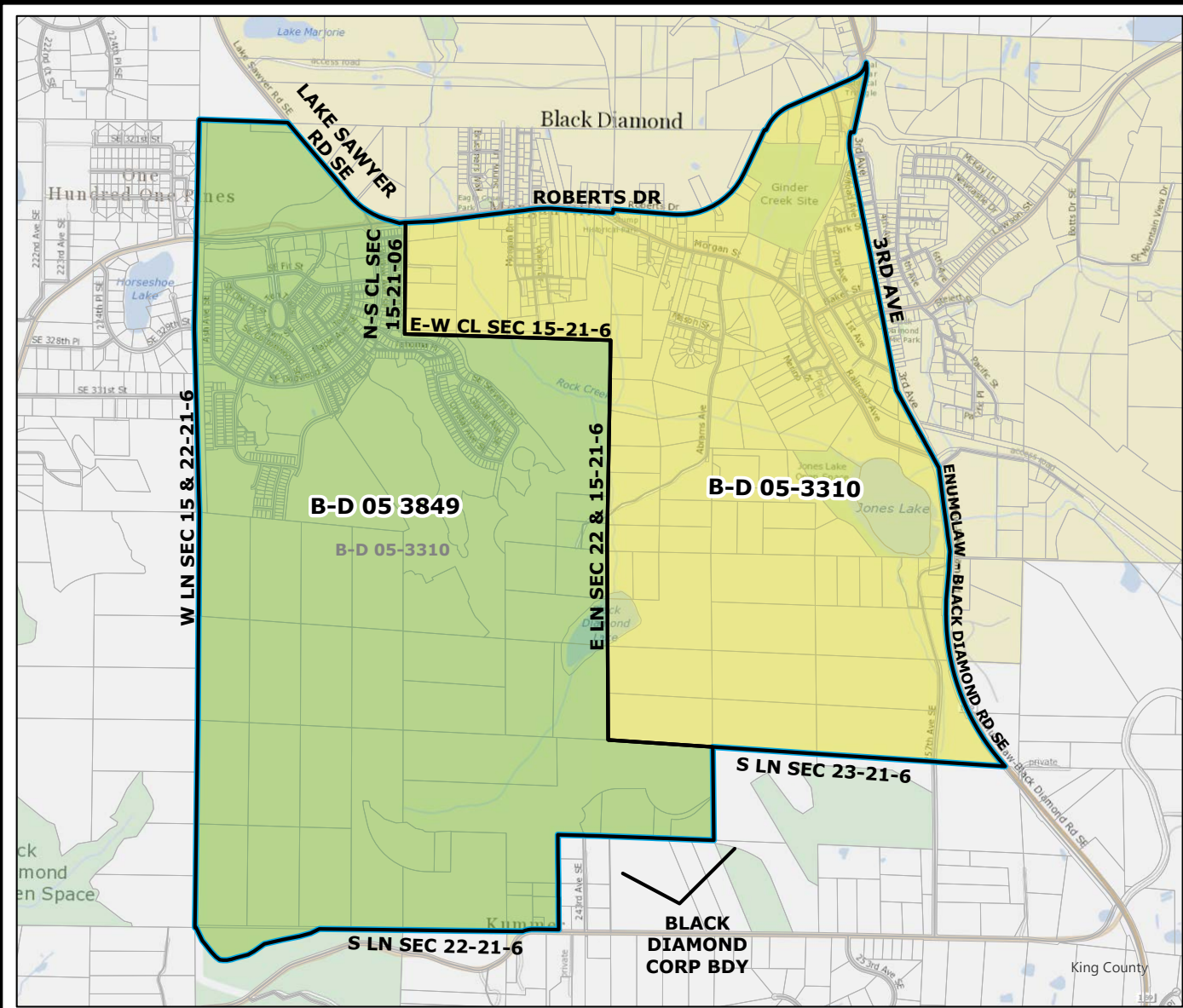
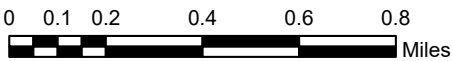
| Code | Precinct Name | LG | CG | CC |
|------|---------------|----|----|----|
| 3849 | B-D 05-3849 | 5 | 8 | 9 |
| 3310 | B-D 05-3310 | 5 | 8 | 9 |

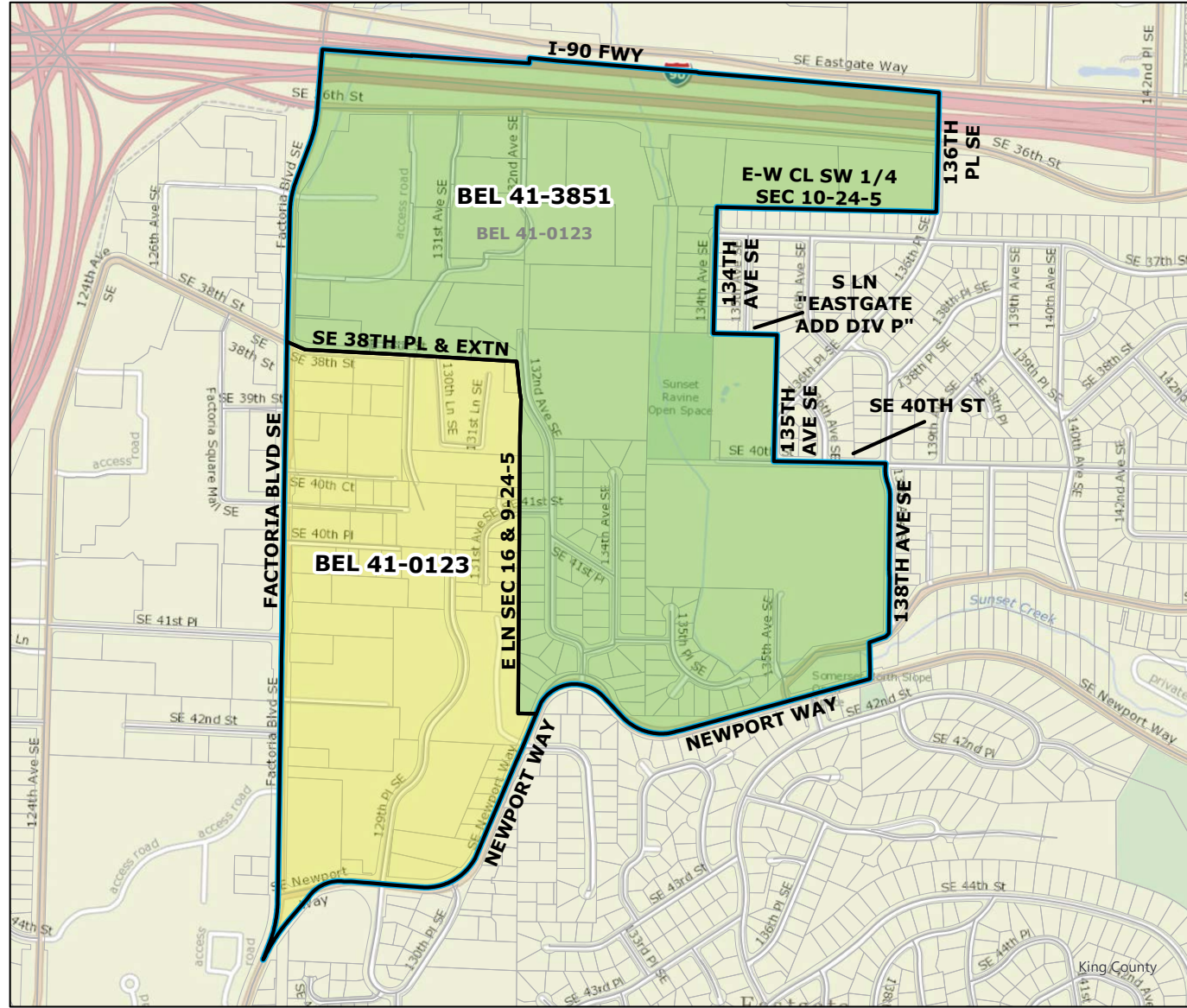
| Original Precinct(s) | | | | |
|----------------------|-------------|---|---|---|
| 3310 | B-D 05-3310 | 5 | 8 | 9 |

*: Denotes precinct(s) that have been abolished.
 Precinct map produced by King County GIS Elections in accordance with KCC 1.12.101 & RCW 29A.16.040

Legend

-  Original Precinct(s)
-  New Precinct(s)
-  Altered Precinct(s)



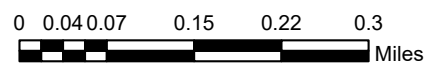
2021 Precinct Alterations

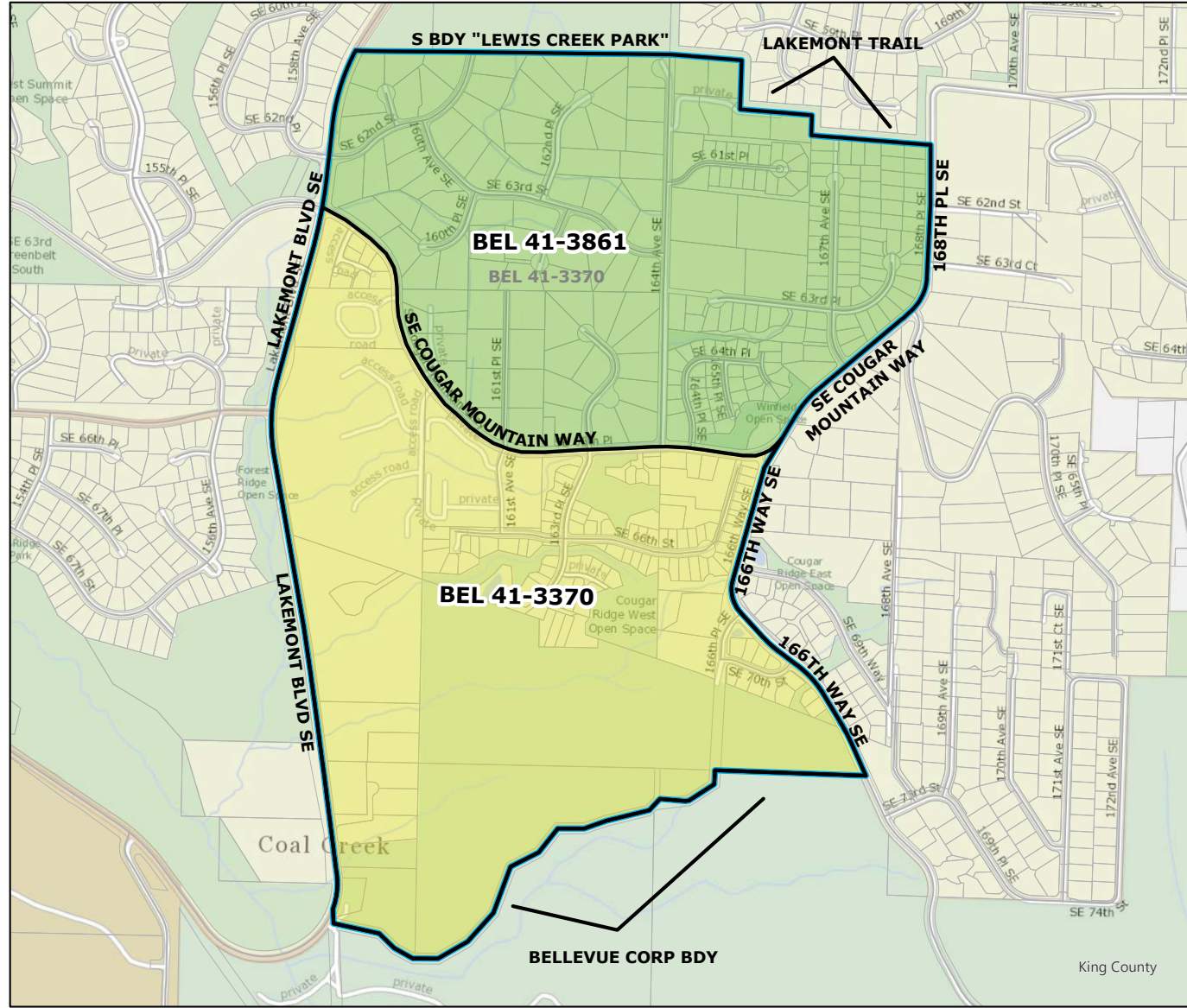
| Code | Precinct Name | LG | CG | CC |
|----------------------|---------------|----|----|----|
| 3851 | BEL 41-3851 | 41 | 9 | 9 |
| 0123 | BEL 41-0123 | 41 | 9 | 9 |
| Original Precinct(s) | | | | |
| 0123 | BEL 41-0123 | 41 | 9 | 9 |

*: Denotes precinct(s) that have been abolished.
 Precinct map produced by King County GIS Elections in accordance with KCC 1.12.101 & RCW 29A.16.040

Legend

- Original Precinct(s)
- New Precinct(s)
- Altered Precinct(s)





2021 Precinct Alterations

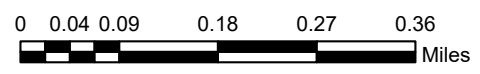
| Code | Precinct Name | LG | CG | CC |
|------|---------------|----|----|----|
| 3861 | BEL 41-3861 | 41 | 9 | 9 |
| 3370 | BEL 41-3370 | 41 | 9 | 9 |

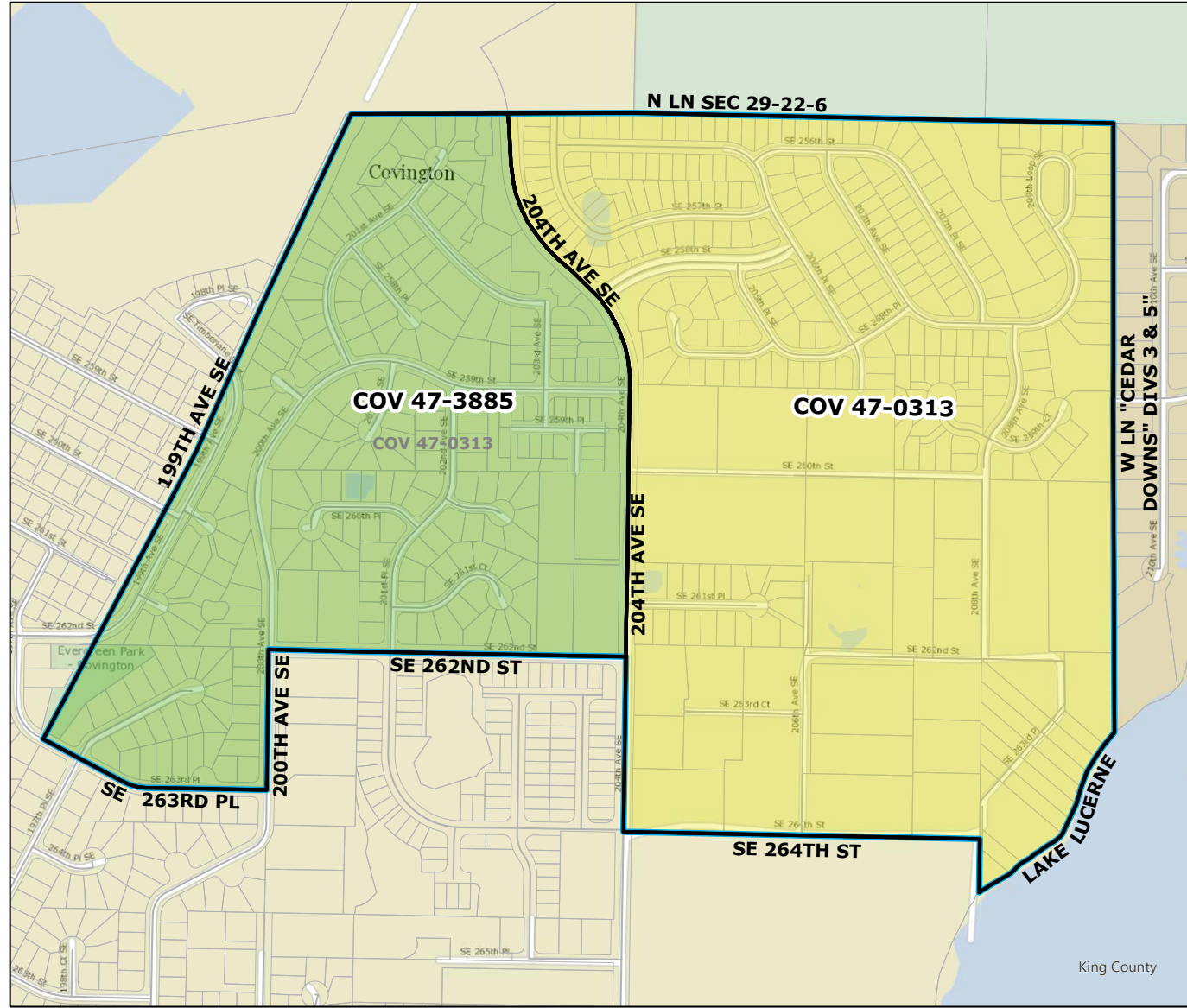
| Original Precinct(s) | | | | |
|----------------------|-------------|----|---|---|
| 3370 | BEL 41-3370 | 41 | 9 | 9 |

*: Denotes precinct(s) that have been abolished.
 Precinct map produced by King County GIS Elections in accordance with KCC 1.12.101 & RCW 29A.16.040

Legend

- Original Precinct(s)
- New Precinct(s)
- Altered Precinct(s)





2021 Precinct Alterations


| Code | Precinct Name | LG | CG | CC |
|------|---------------|----|----|----|
| 3885 | COV 47-3885 | 47 | 8 | 9 |
| 0313 | COV 47-0313 | 47 | 8 | 9 |

| Original Precinct(s) | | | | |
|----------------------|-------------|----|---|---|
| 0313 | COV 47-0313 | 47 | 8 | 9 |

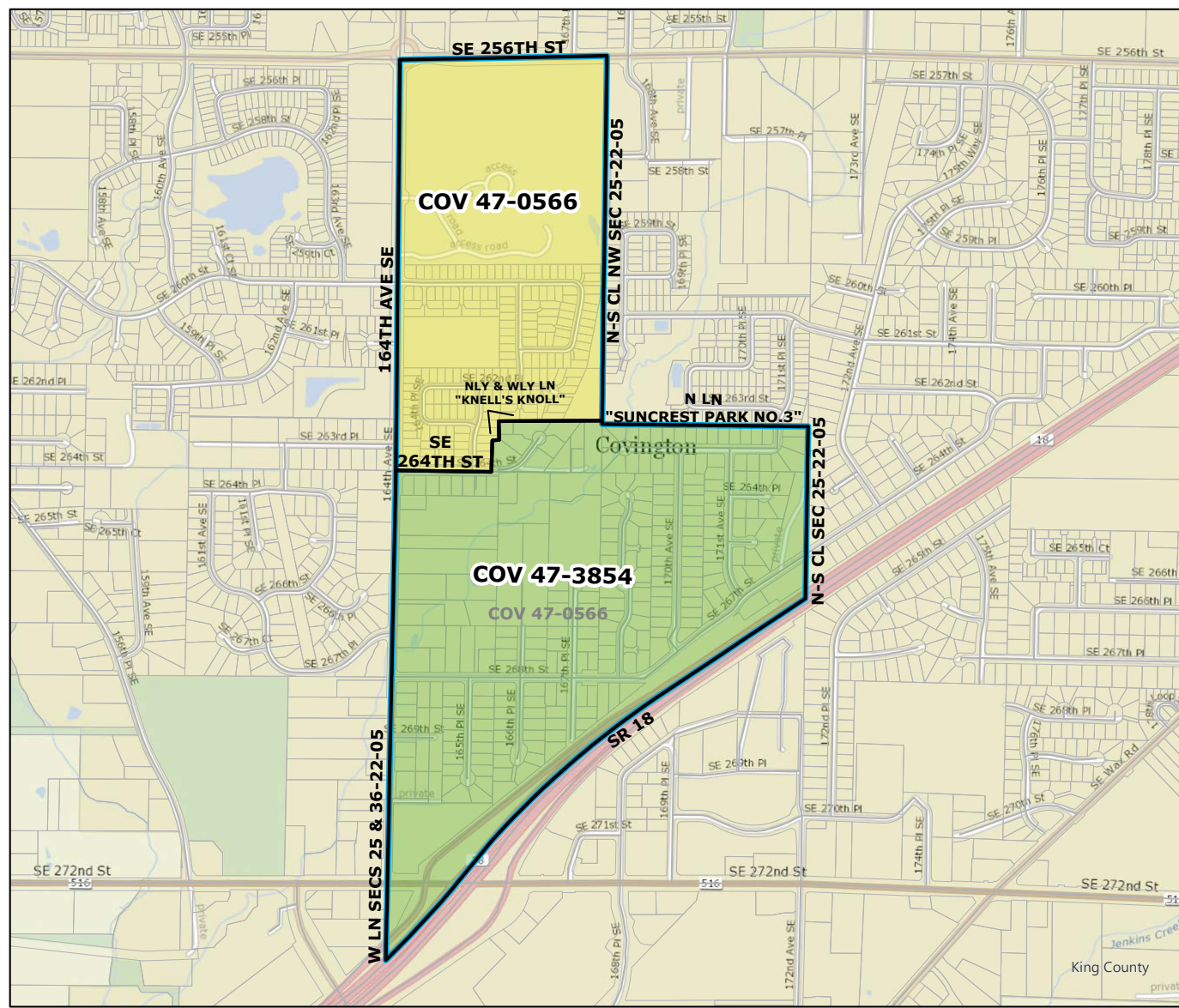
*: Denotes precinct(s) that have been abolished.
 Precinct map produced by King County GIS Elections in accordance with KCC 1.12.101 & RCW 29A.16.040

Legend

- Original Precinct(s)
- New Precinct(s)
- Altered Precinct(s)




King County



2021 Precinct Alterations

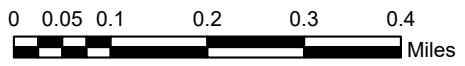
| Code | Precinct Name | LG | CG | CC |
|------|---------------|----|----|----|
| 3854 | COV 47-3854 | 47 | 8 | 9 |
| 0566 | COV 47-0566 | 47 | 8 | 9 |

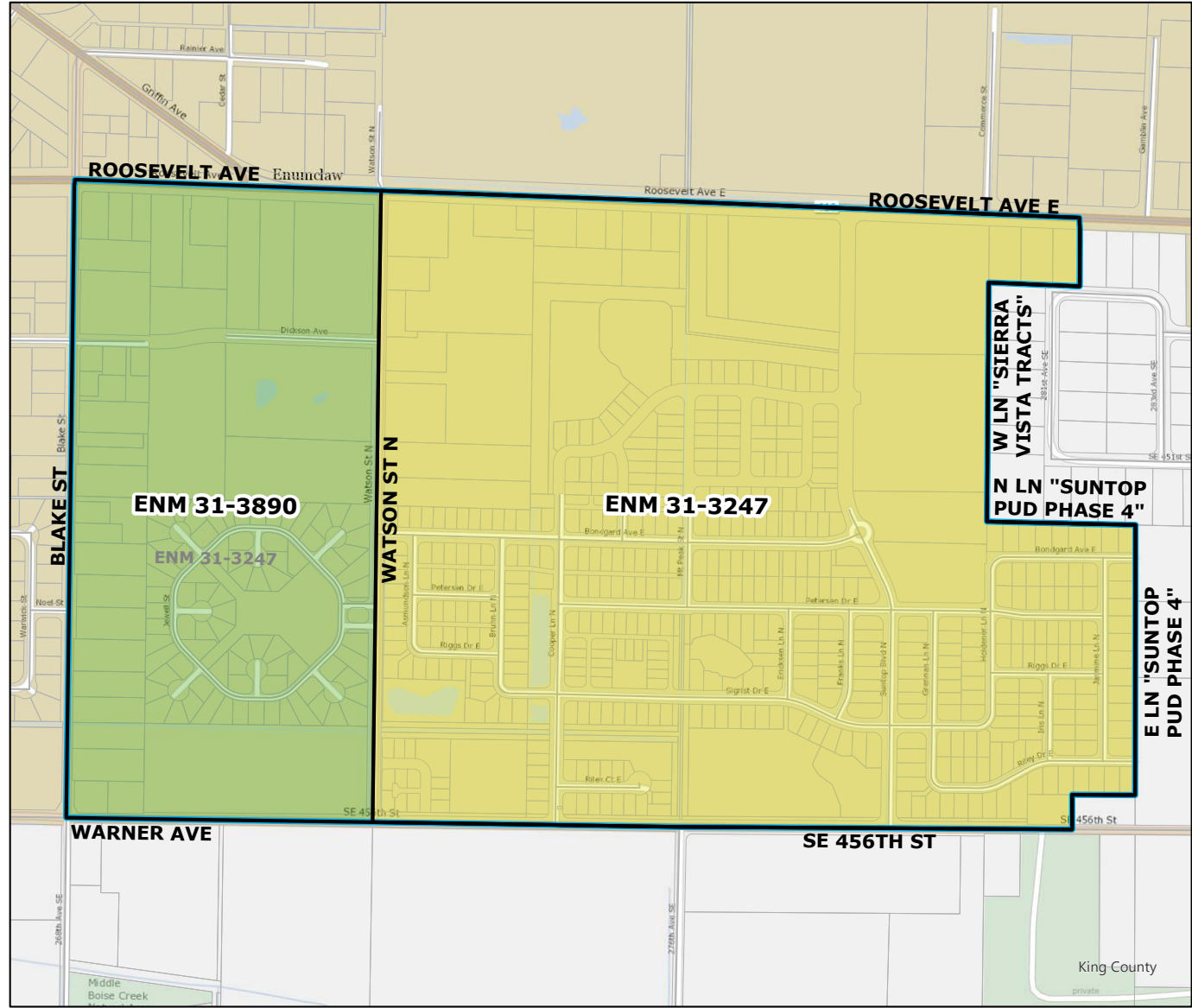
| Original Precinct(s) | | | | |
|----------------------|-------------|----|---|---|
| 0566 | COV 47-0566 | 47 | 8 | 9 |

*: Denotes precinct(s) that have been abolished.
 Precinct map produced by King County GIS Elections in accordance with KCC 1.12.101 & RCW 29A.16.040

Legend

- Original Precinct(s)
- New Precinct(s)
- Altered Precinct(s)





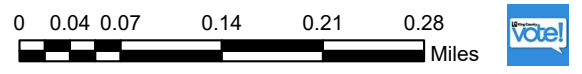
2021 Precinct Alterations

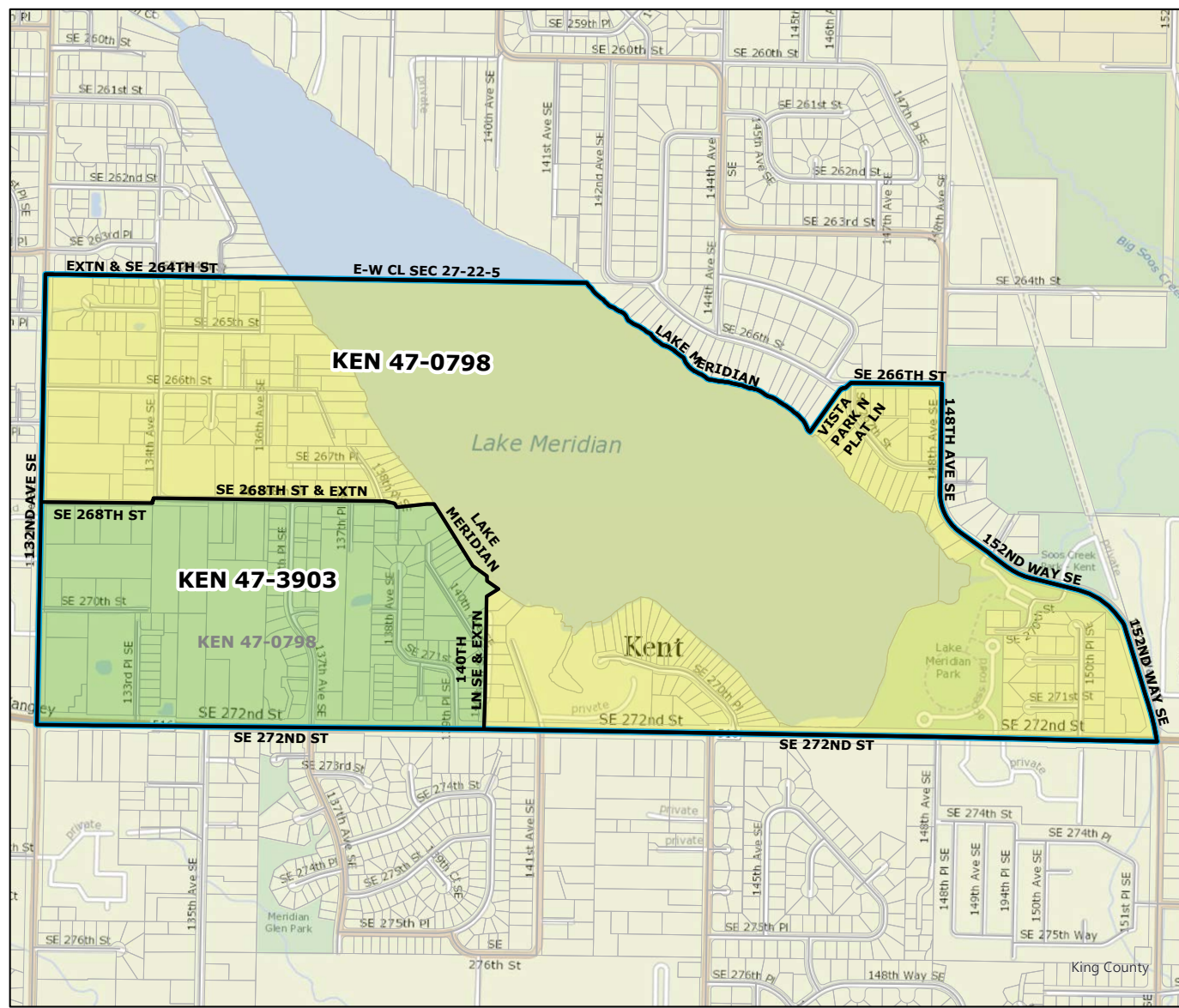
| Code | Precinct Name | LG | CG | CC |
|----------------------|---------------|----|----|----|
| 3890 | ENM 31-3890 | 31 | 8 | 9 |
| 3247 | ENM 31-3247 | 31 | 8 | 9 |
| Original Precinct(s) | | | | |
| 3247 | ENM 31-3247 | 31 | 8 | 9 |

*: Denotes precinct(s) that have been abolished.
 Precinct map produced by King County GIS Elections in accordance with KCC 1.12.101 & RCW 29A.16.040

Legend

- Original Precinct(s)
- New Precinct(s)
- Altered Precinct(s)





2021 Precinct Alterations

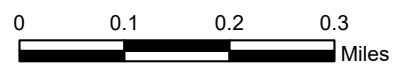
| Code | Precinct Name | LG | CG | CC |
|------|---------------|----|----|----|
| 3903 | KEN 47-3903 | 47 | 8 | 9 |
| 0798 | KEN 47-0798 | 47 | 8 | 9 |

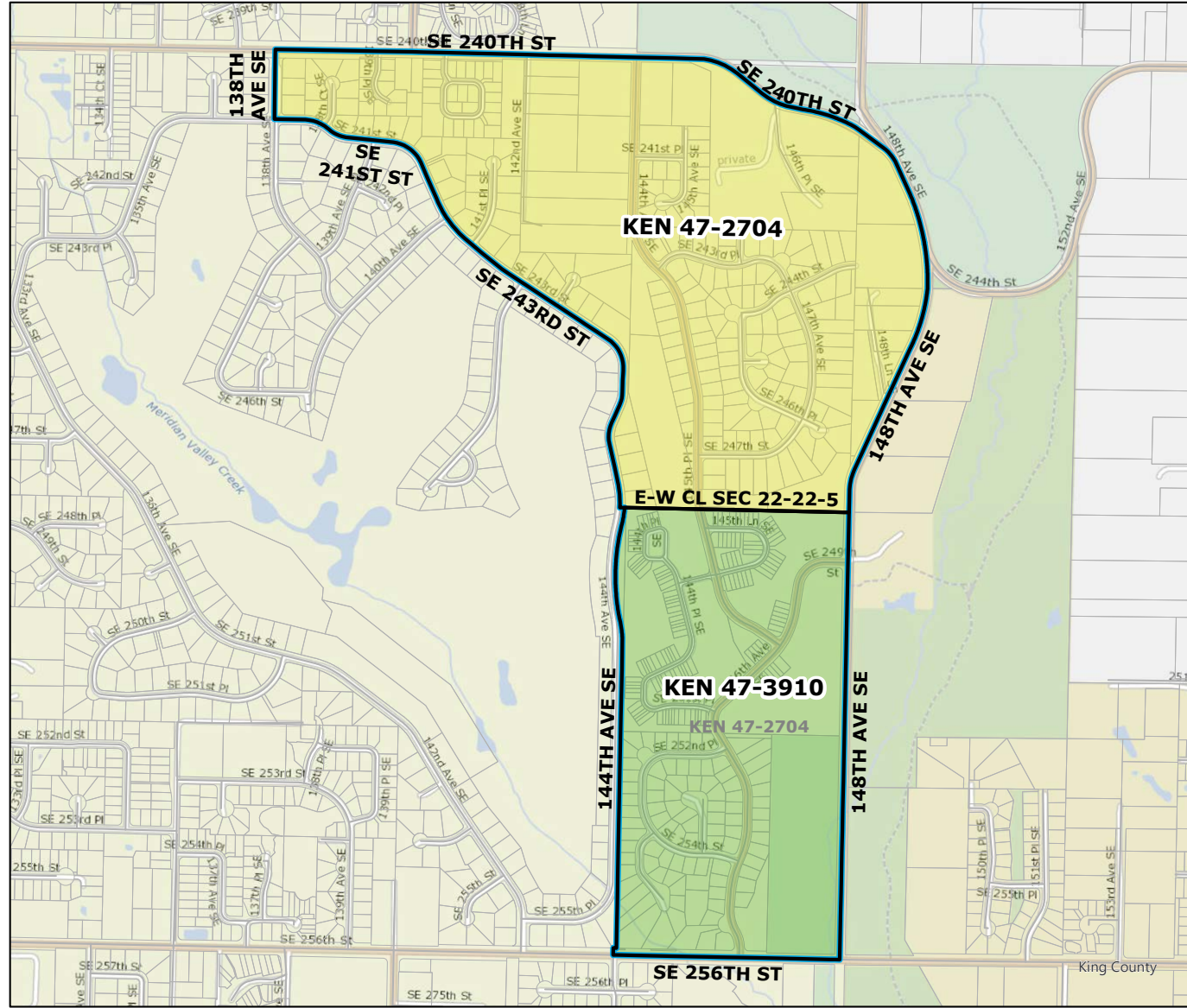
| Original Precinct(s) | | | | |
|----------------------|-------------|----|---|---|
| 0798 | KEN 47-0798 | 47 | 8 | 9 |

*: Denotes precinct(s) that have been abolished.
 Precinct map produced by King County GIS Elections in accordance with KCC 1.12.101 & RCW 29A.16.040

Legend

- Original Precinct(s)
- New Precinct(s)
- Altered Precinct(s)





2021 Precinct Alterations


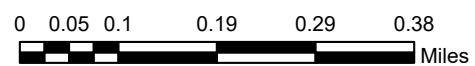
| Code | Precinct Name | LG | CG | CC |
|------|---------------|----|----|----|
| 3910 | KEN 47-3910 | 47 | 8 | 9 |
| 2704 | KEN 47-2704 | 47 | 8 | 9 |

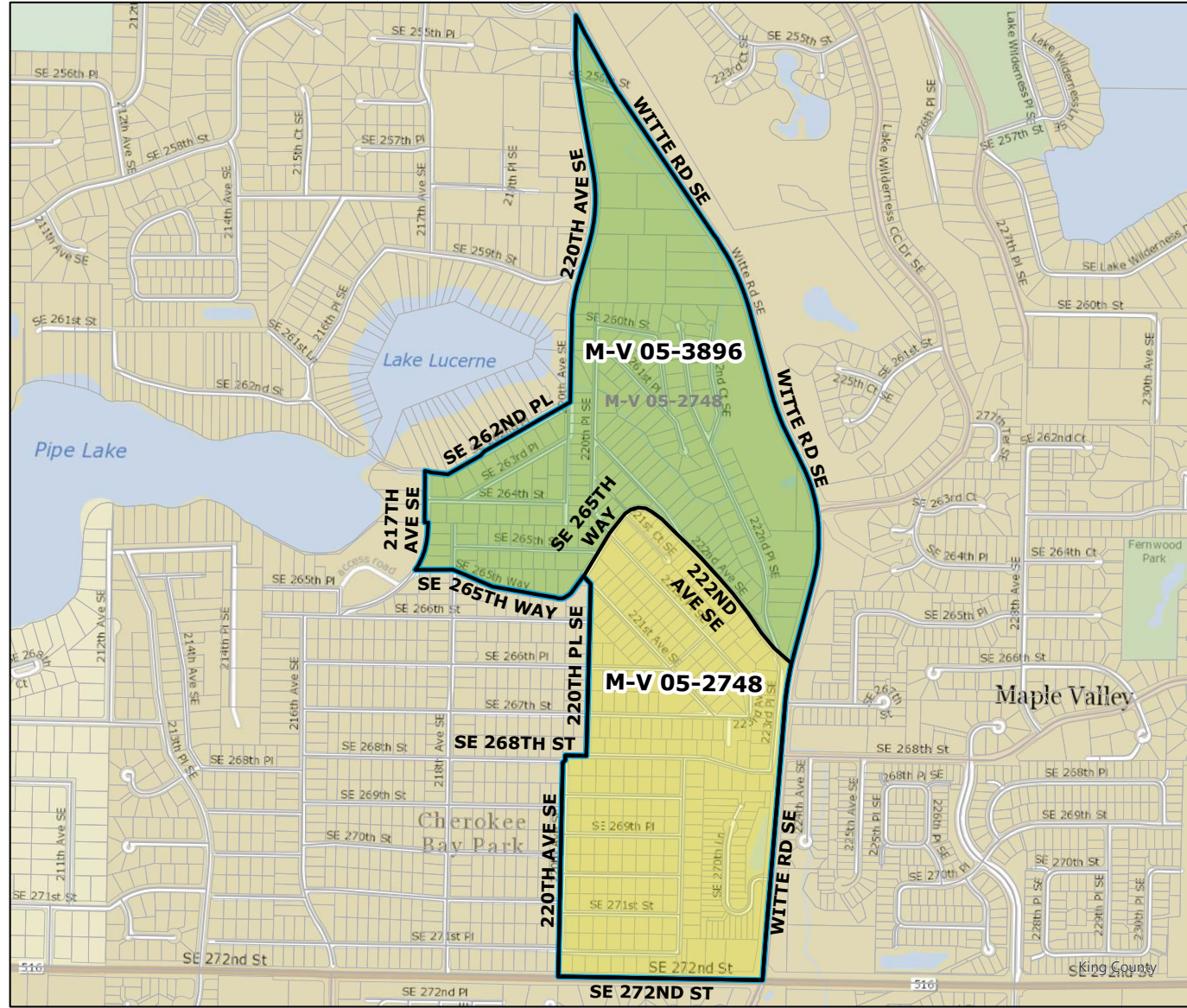
| Original Precinct(s) | | | | |
|----------------------|-------------|----|---|---|
| 2704 | KEN 47-2704 | 47 | 8 | 9 |

*: Denotes precinct(s) that have been abolished.
 Precinct map produced by King County GIS Elections in accordance with KCC 1.12.101 & RCW 29A.16.040

Legend

- Original Precinct(s)
- New Precinct(s)
- Altered Precinct(s)



2021 Precinct Alterations

| Code | Precinct Name | LG | CG | CC |
|------|---------------|----|----|----|
| 3896 | M-V 05-3896 | 5 | 8 | 9 |
| 2748 | M-V 05-2748 | 5 | 8 | 9 |

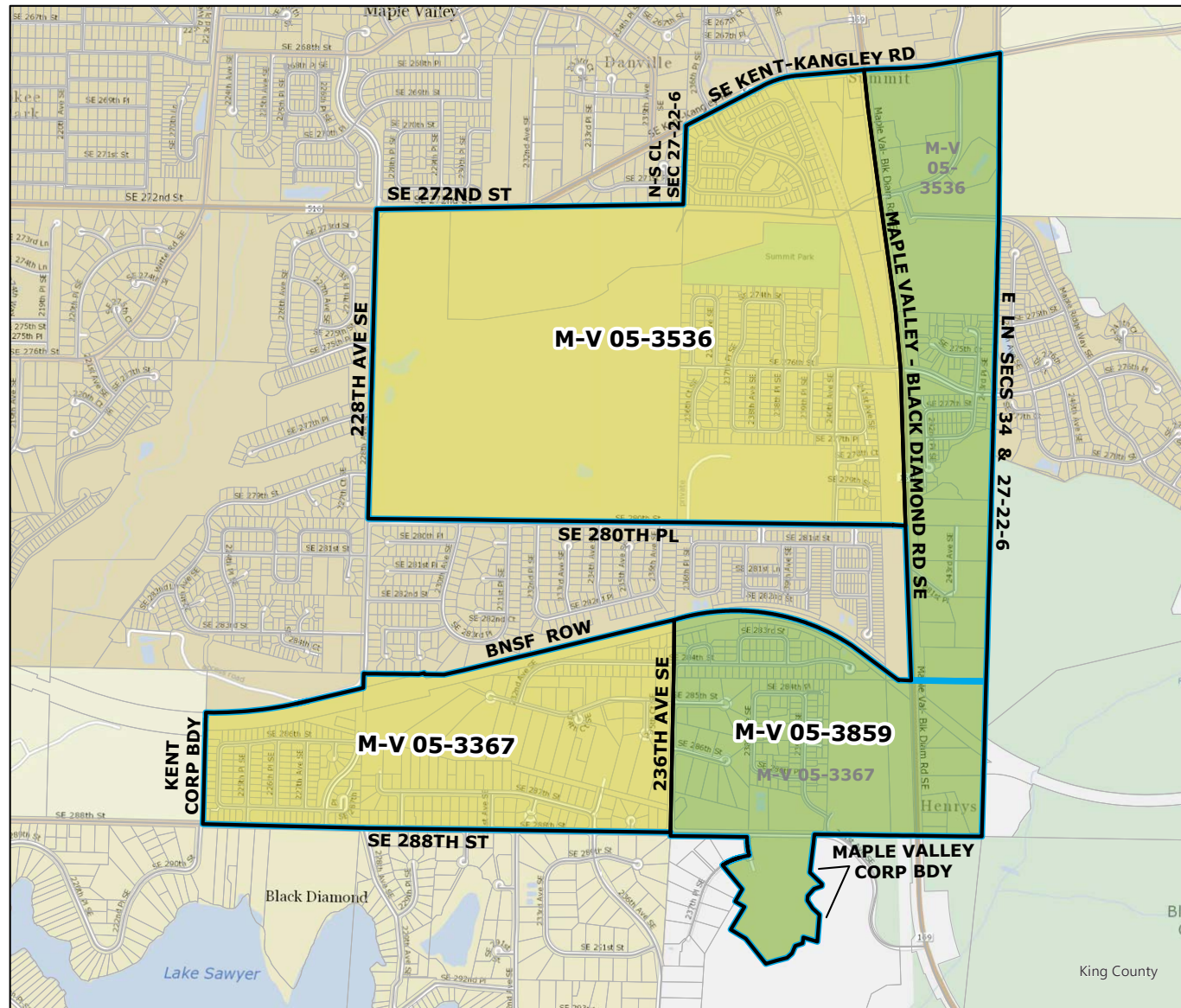
| Original Precinct(s) | | | | |
|----------------------|-------------|---|---|---|
| 2748 | M-V 05-2748 | 5 | 8 | 9 |

*: Denotes precinct(s) that have been abolished.
 Precinct map produced by King County GIS Elections in accordance with KCC 1.12.101 & RCW 29A.16.040

Legend

- Original Precinct(s)
- New Precinct(s)
- Altered Precinct(s)





2021 Precinct Alterations


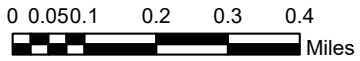
| Code | Precinct Name | LG | CG | CC |
|------|---------------|----|----|----|
| 3859 | M-V 05-3859 | 5 | 8 | 9 |
| 3367 | M-V 05-3367 | 5 | 8 | 9 |
| 3536 | M-V 05-3536 | 5 | 8 | 9 |

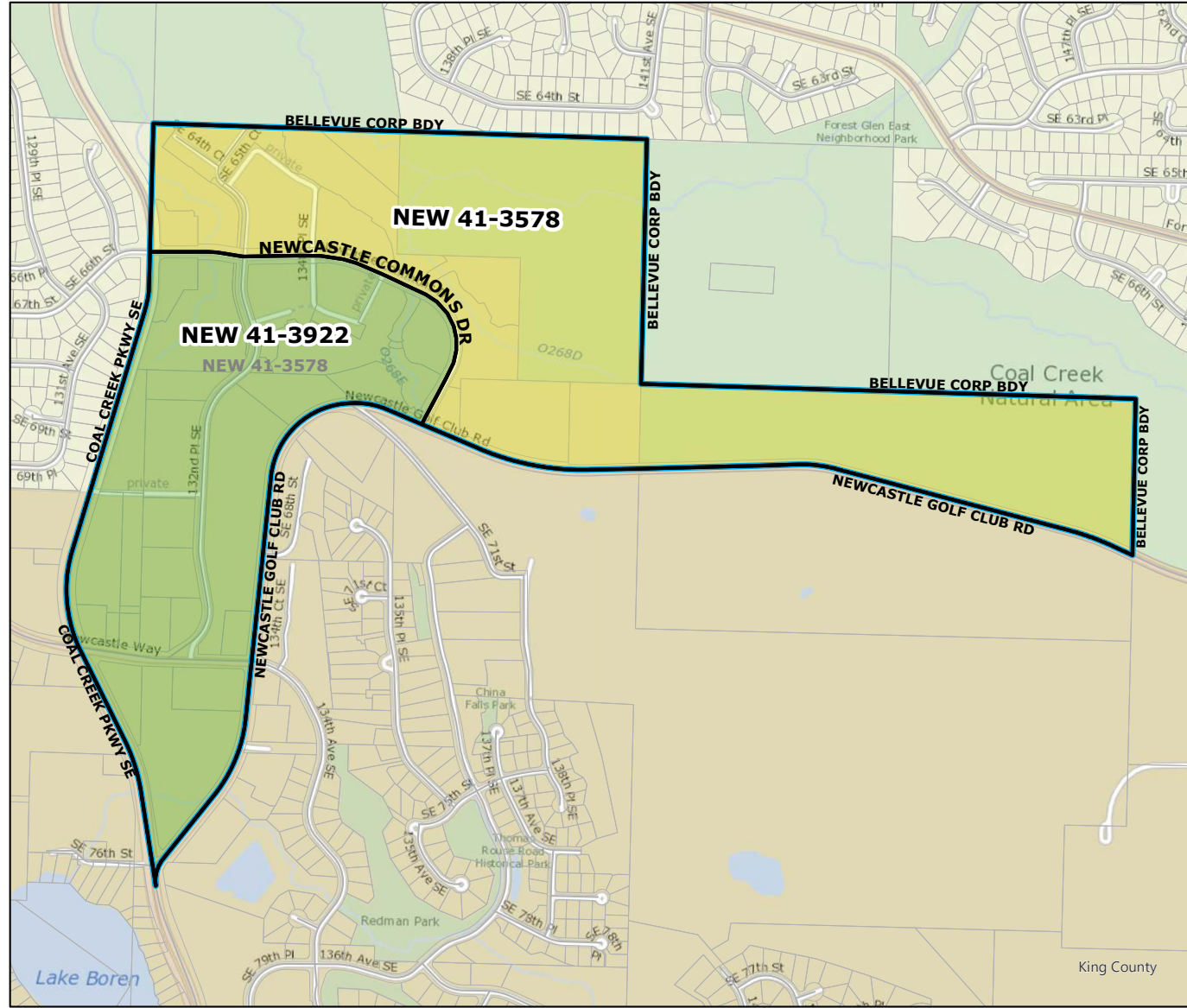
| Original Precinct(s) | | | | |
|----------------------|-------------|---|---|---|
| 3367 | M-V 05-3367 | 5 | 8 | 9 |
| 3536 | M-V 05-3536 | 5 | 8 | 9 |

*: Denotes precinct(s) that have been abolished.
 Precinct map produced by King County GIS Elections in accordance with KCC 1.12.101 & RCW 29A.16.040

Legend

- Original Precinct(s)
- New Precinct(s)
- Altered Precinct(s)




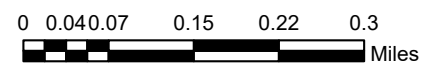
2021 Precinct Alterations

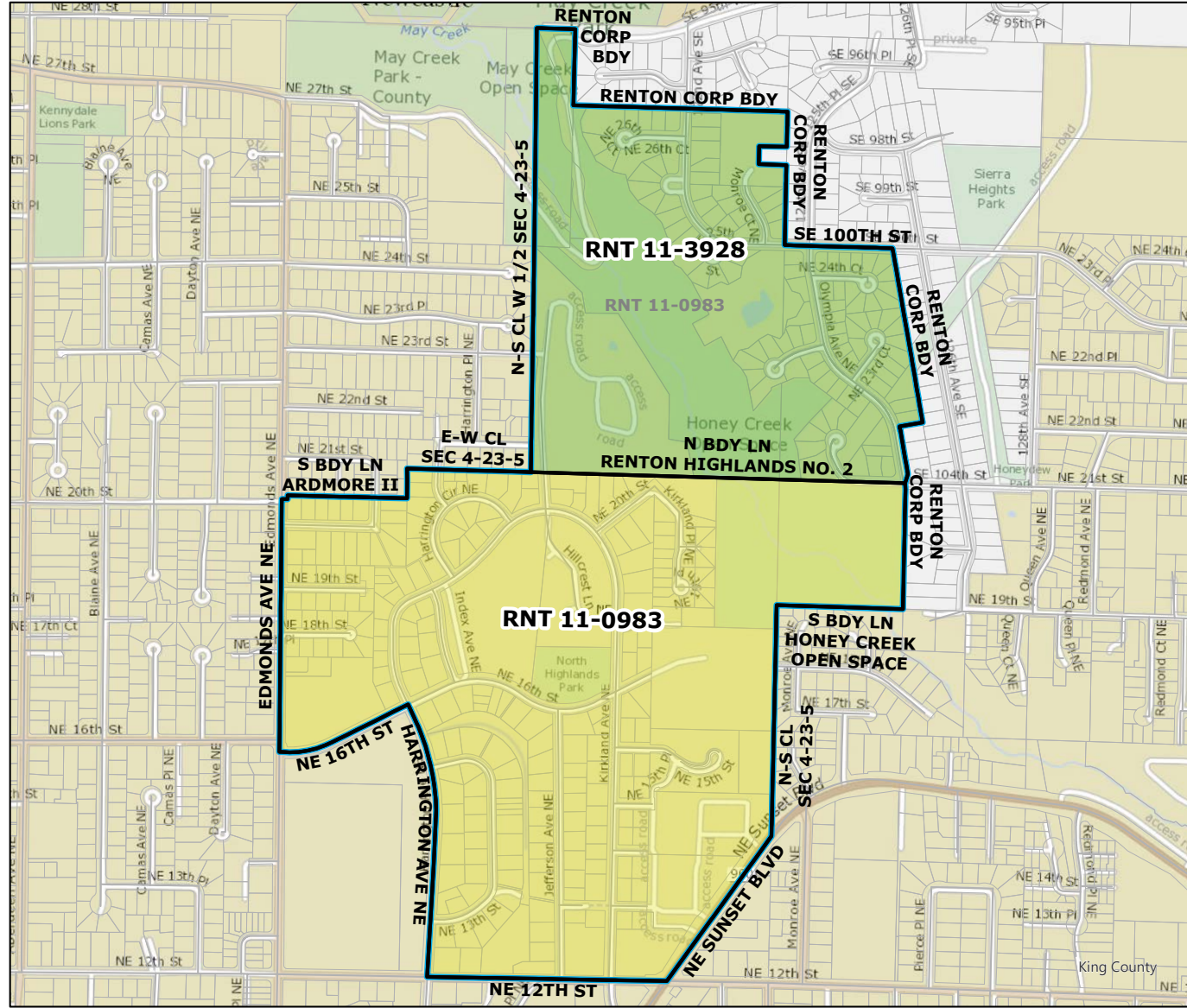
| Code | Precinct Name | LG | CG | CC |
|-----------------------------|---------------|----|----|----|
| 3922 | NEW 41-3922 | 41 | 9 | 9 |
| 3578 | NEW 41-3578 | 41 | 9 | 9 |
| Original Precinct(s) | | | | |
| 3578 | NEW 41-3578 | 41 | 9 | 9 |

*: Denotes precinct(s) that have been abolished.
 Precinct map produced by King County GIS Elections in accordance with KCC 1.12.101 & RCW 29A.16.040

Legend

- Original Precinct(s)
- New Precinct(s)
- Altered Precinct(s)



2021 Precinct Alterations

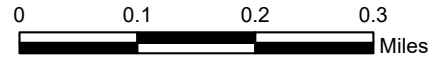
| Code | Precinct Name | LG | CG | CC |
|------|---------------|----|----|----|
| 3928 | RNT 11-3928 | 11 | 9 | 9 |
| 0983 | RNT 11-0983 | 11 | 9 | 9 |

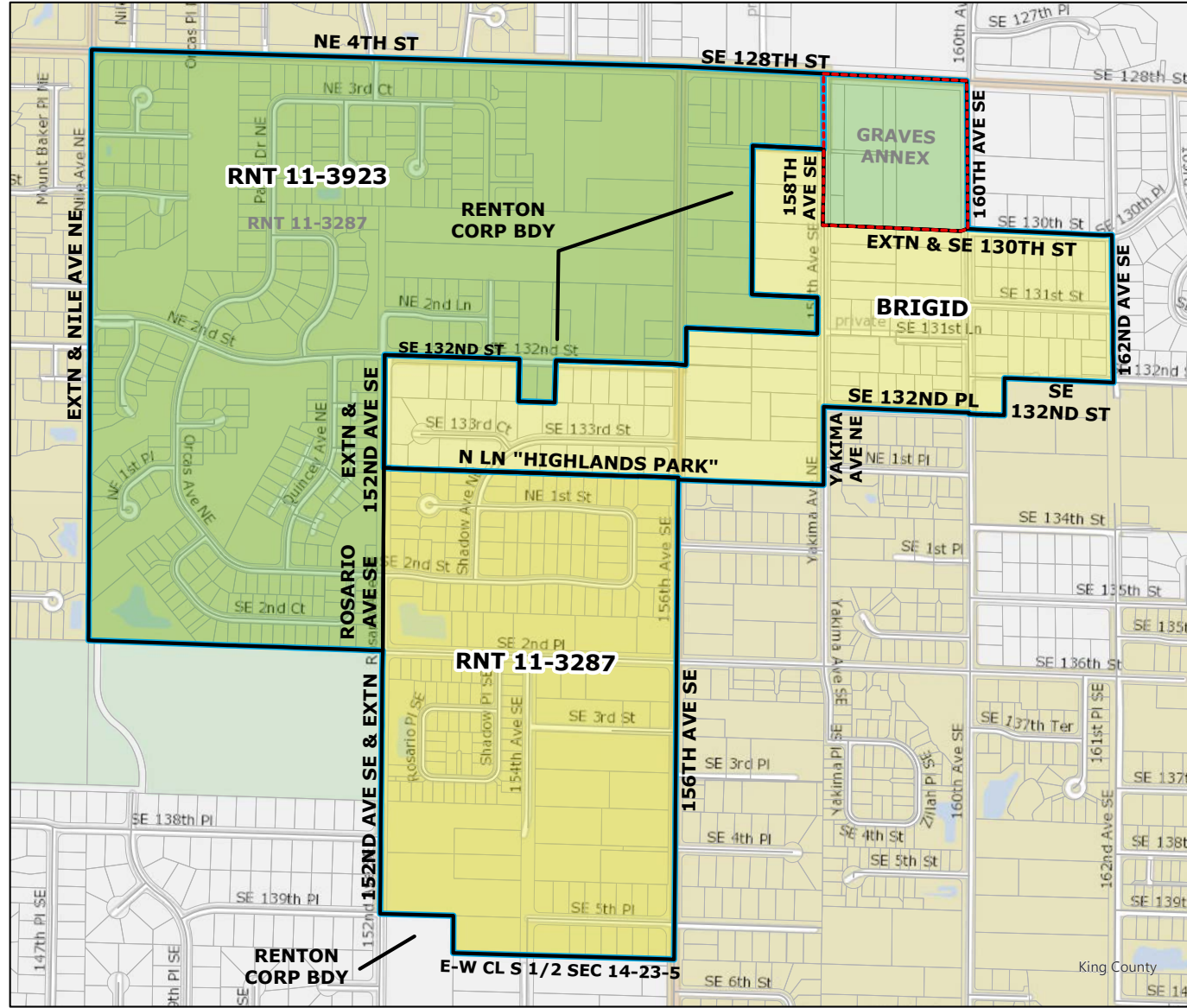
| Original Precinct(s) | | | | |
|----------------------|-------------|----|---|---|
| 0983 | RNT 11-0983 | 11 | 9 | 9 |

*: Denotes precinct(s) that have been abolished.
 Precinct map produced by King County GIS Elections in accordance with KCC 1.12.101 & RCW 29A.16.040

Legend

- Original Precinct(s)
- New Precinct(s)
- Altered Precinct(s)





2021 Precinct Alterations

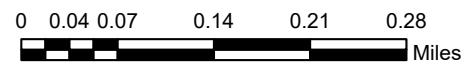
| Code | Precinct Name | LG | CG | CC |
|------|---------------|----|----|----|
| 3923 | RNT 11-3923 | 11 | 9 | 9 |
| 3287 | RNT 11-3287 | 11 | 9 | 9 |
| 2802 | BRIGID | 11 | 9 | 9 |

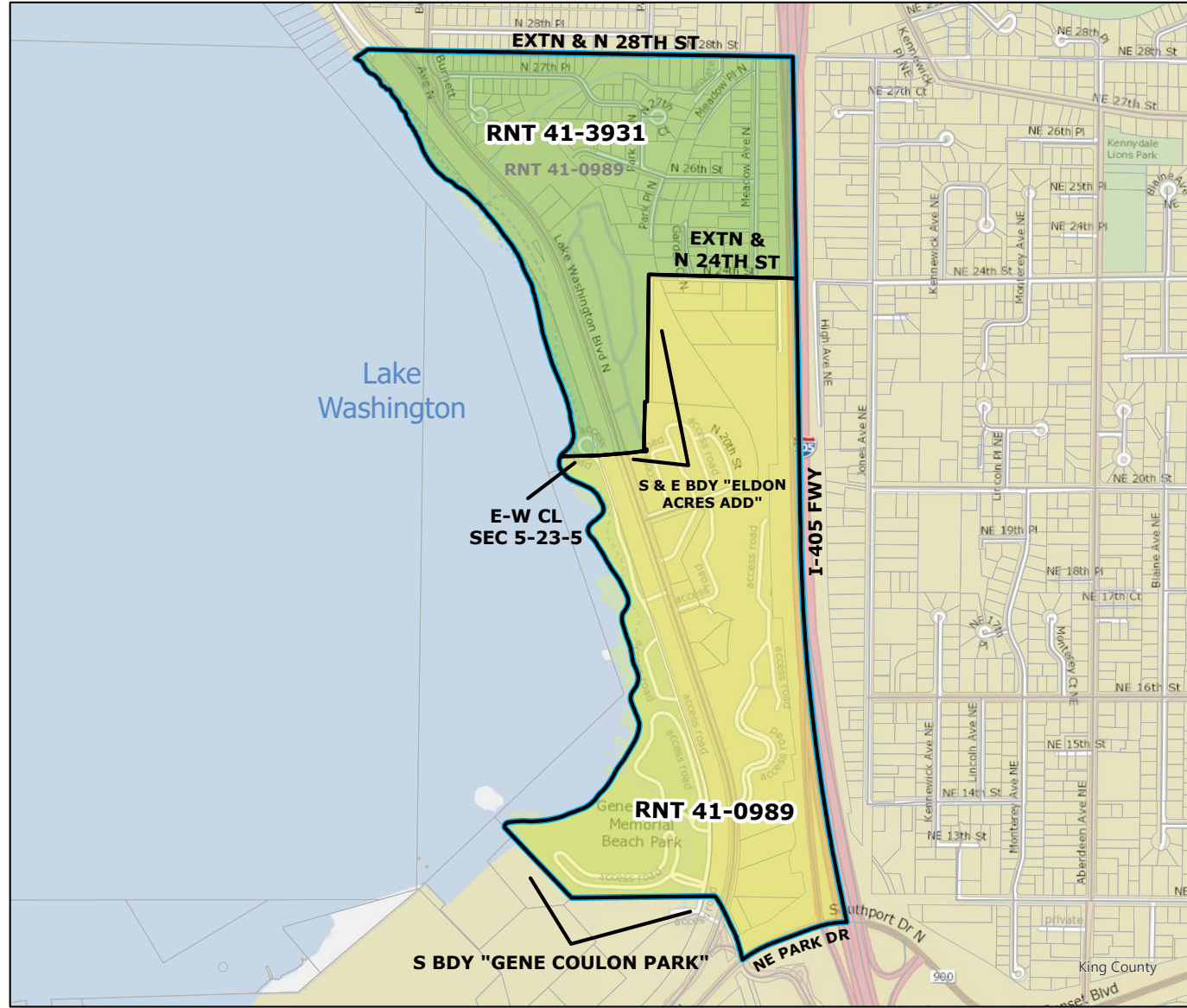
| Original Precinct(s) | | | | |
|----------------------|-------------|----|---|---|
| 3287 | RNT 11-3287 | 11 | 9 | 9 |
| 2802 | BRIGID | 11 | 9 | 9 |

*: Denotes precinct(s) that have been abolished.
 Precinct map produced by King County GIS Elections in accordance with KCC 1.12.101 & RCW 29A.16.040

Legend

- Original Precinct(s)
- New Precinct(s)
- Altered Precinct(s)
- Annexation Area





2021 Precinct Alterations

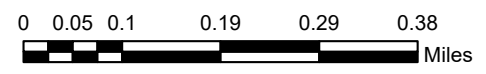
| Code | Precinct Name | LG | CG | CC |
|------|---------------|----|----|----|
| 3931 | RNT 41-3931 | 41 | 9 | 9 |
| 0989 | RNT 41-0989 | 41 | 9 | 9 |

| Original Precinct(s) | | | | |
|----------------------|-------------|----|---|---|
| 0989 | RNT 41-0989 | 41 | 9 | 9 |

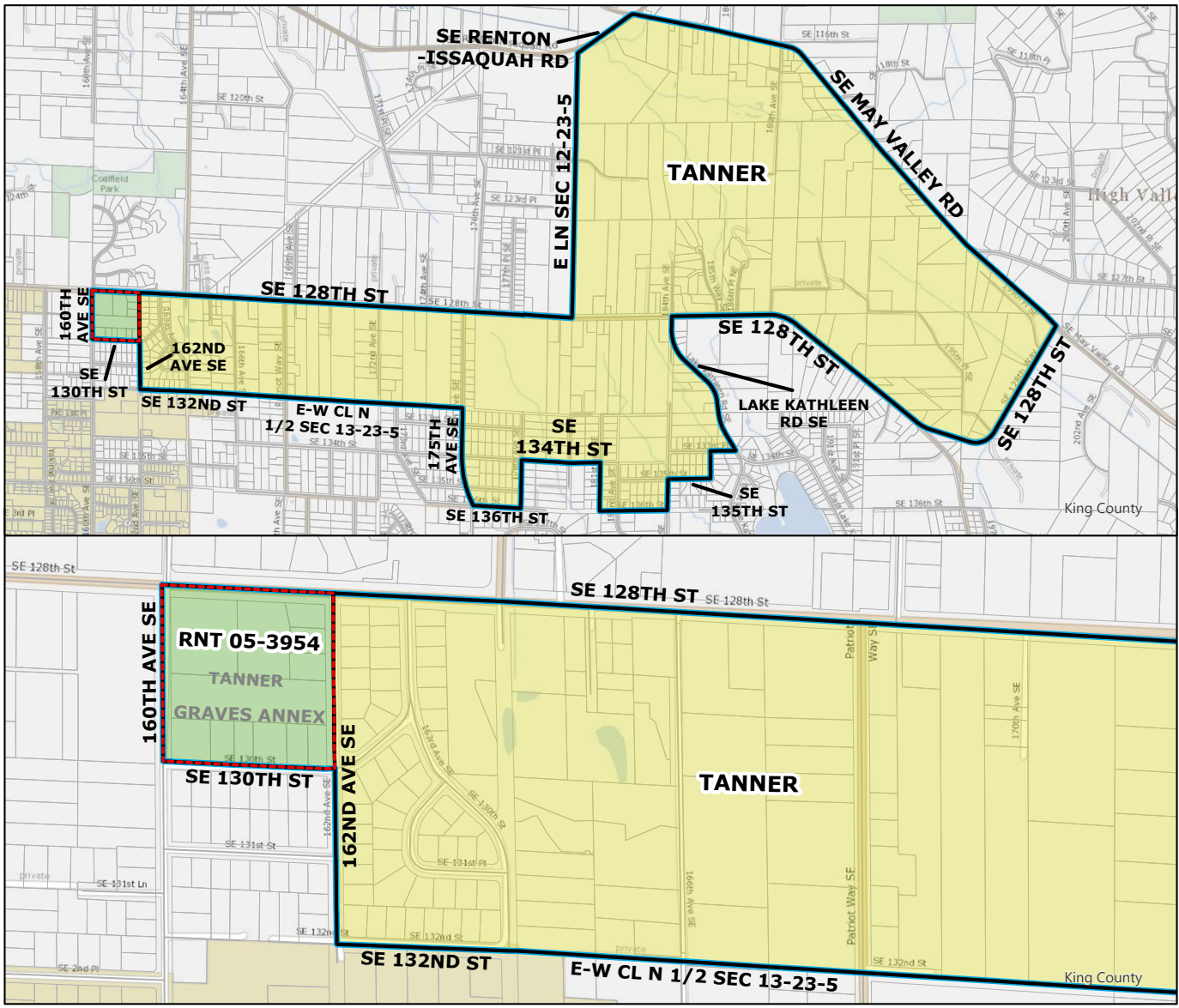
*: Denotes precinct(s) that have been abolished.
 Precinct map produced by King County GIS Elections in accordance with KCC 1.12.101 & RCW 29A.16.040

Legend

- Original Precinct(s)
- New Precinct(s)
- Altered Precinct(s)



2021 Precinct Alterations



| Code | Precinct Name | LG | CG | CC |
|-----------------------------|---------------|----|----|----|
| 3954 | RNT 05-3954 | 5 | 8 | 9 |
| 1141 | TANNER | 5 | 8 | 9 |
| Original Precinct(s) | | | | |
| 1141 | TANNER | 5 | 8 | 9 |

*: Denotes precinct(s) that have been abolished.
 Precinct map produced by King County GIS Elections in accordance with KCC 1.12.101 & RCW 29A.16.040

Legend

- Original Precinct(s)
- New Precinct(s)
- Altered Precinct(s)
- Annexation Area

