

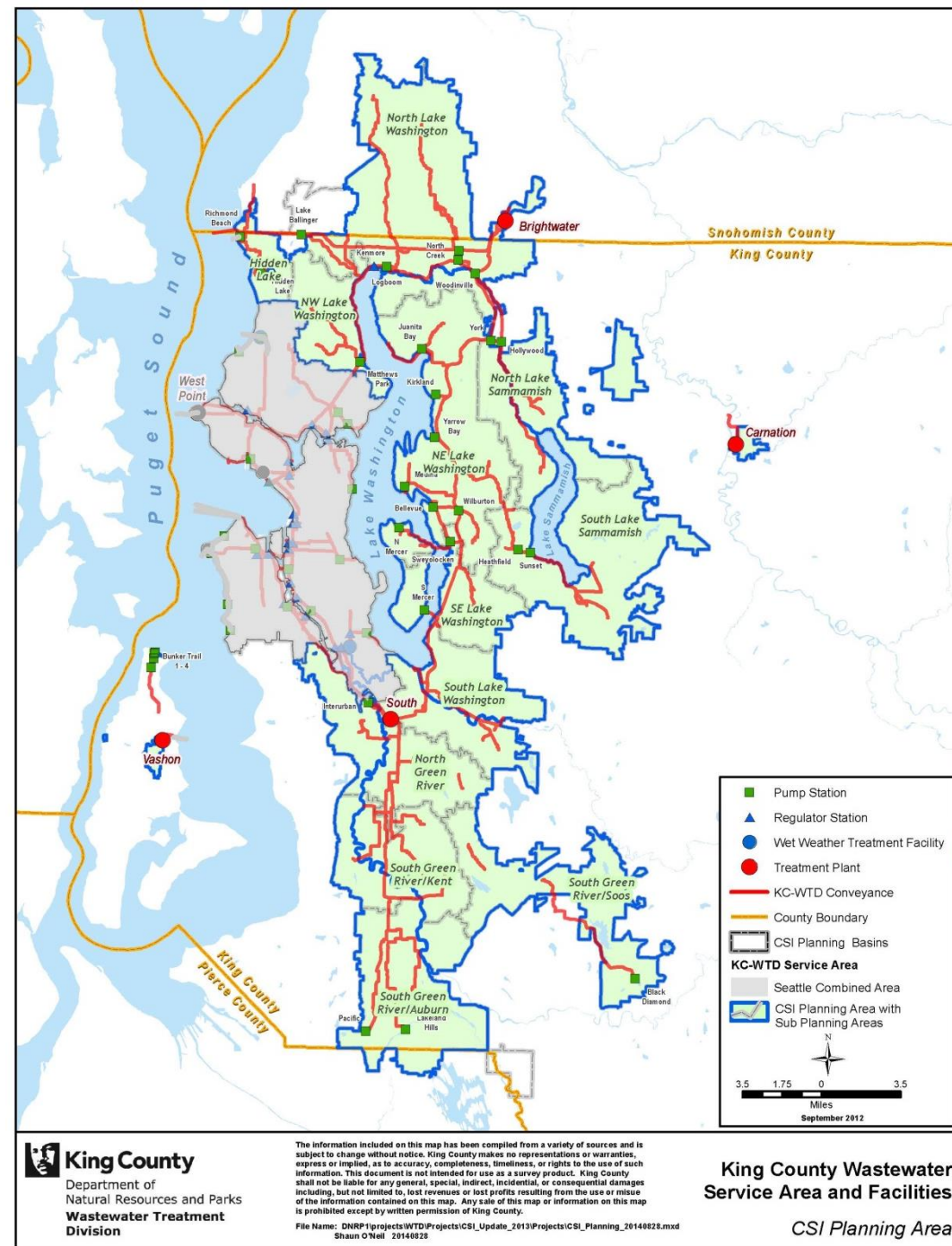
# Conveyance System Improvement (CSI) Program and Projects Briefing

Regional Water Quality Committee  
October 2, 2019

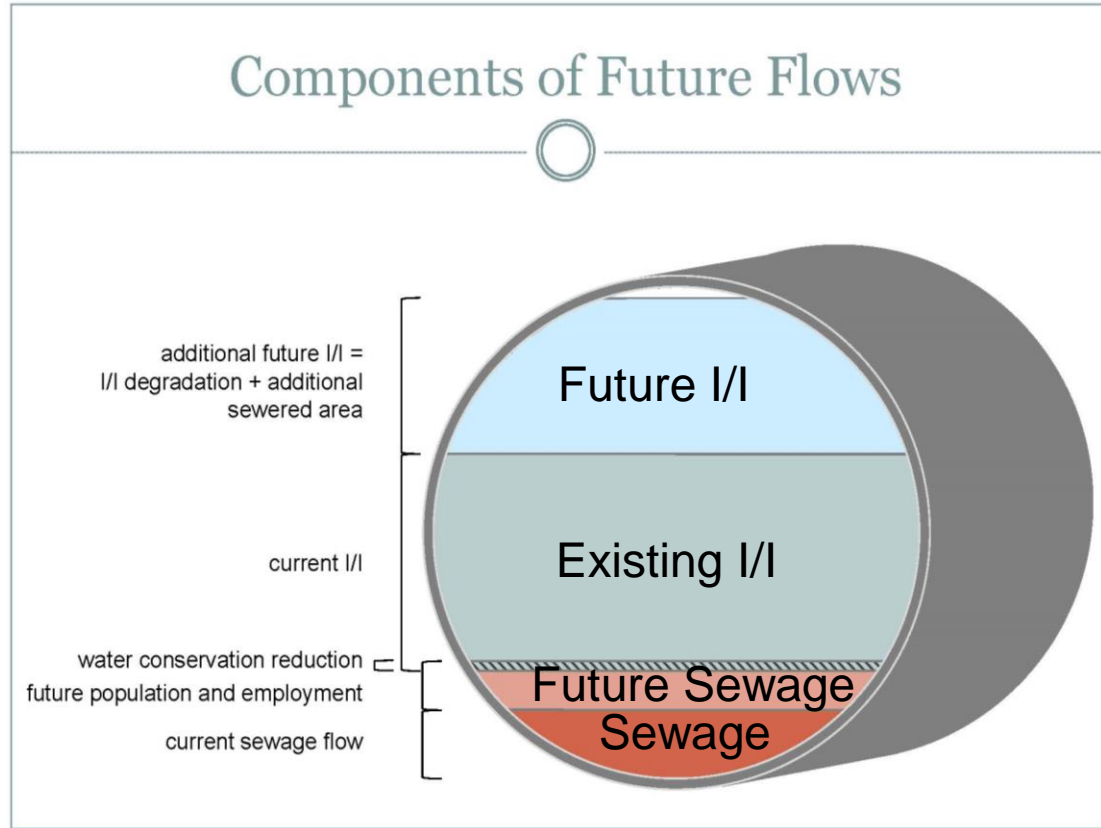


# CSI Program Overview

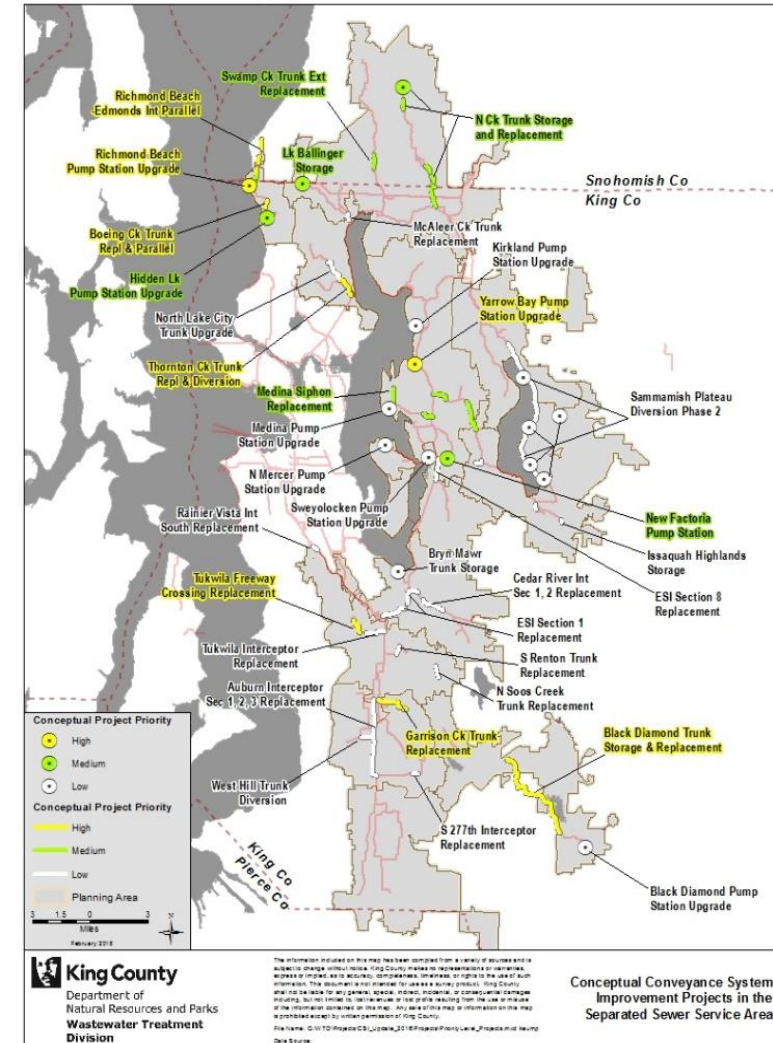
- ▶ Guides major improvements to the separated portion of the conveyance system
- Identifies near term projects for implementation
- Determines long range investments required to ensure capacity



# Regional Capacity Needs



I/I = Infiltration/Inflow



## CSI Projects Completed Since Approval of RWSP in 1999

North Creek Storage Facility	Eastside Interceptor Section 1
Mill Creek Relief Sewer	Pacific Pump Station
Juanita Pump Station	Fairwood Interceptor
Hidden Lake Pump Station	Bellevue Pump Station
Kent–Auburn Conveyance System Improvements project (Phase A)	Bellevue Influent Trunk
North Creek Interceptor	Kent–Auburn (Phase B)

## Examples of CSI Projects Underway

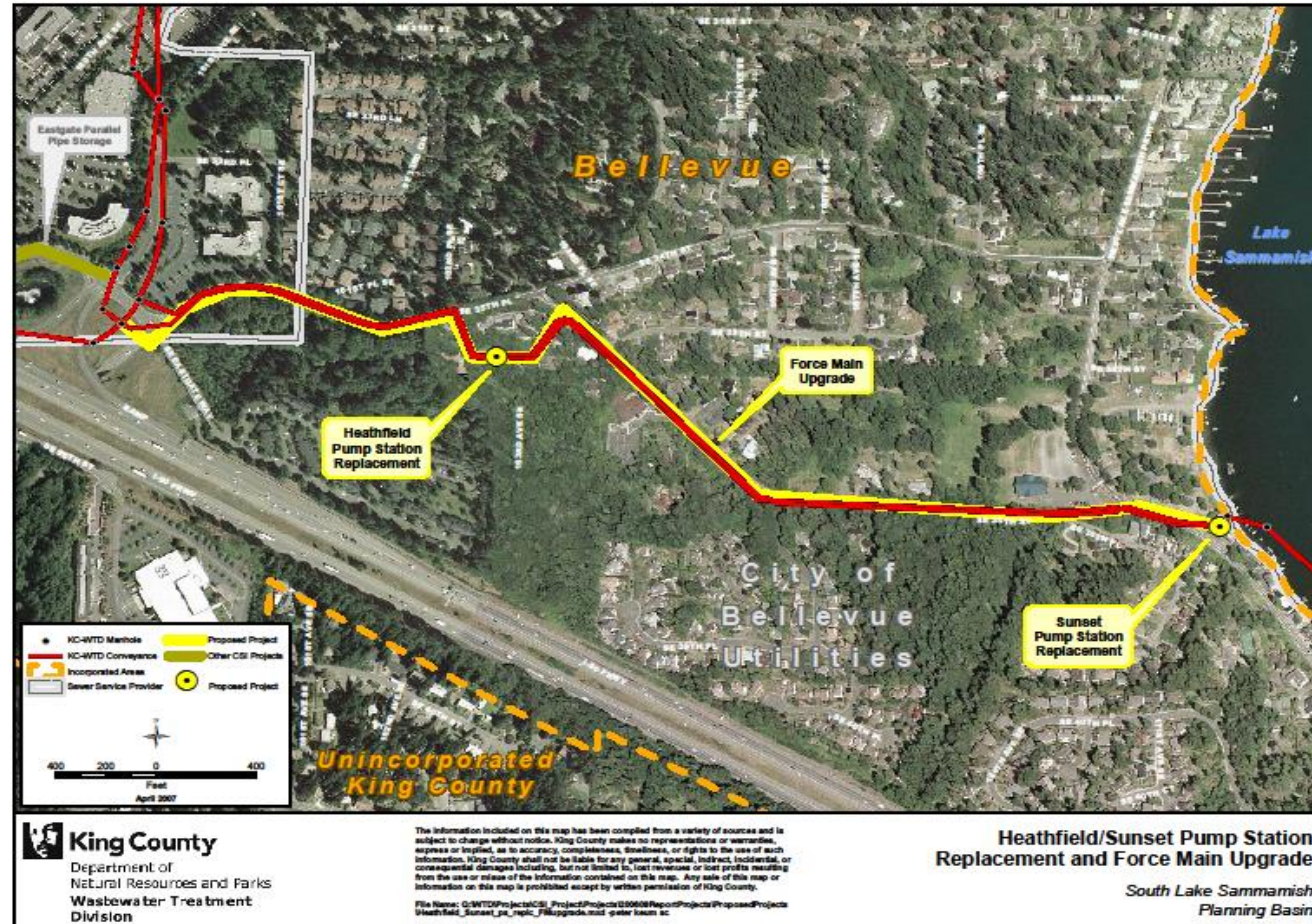
Sunset and Heathfield Pump Stations and Force Main Upgrade

Lake Hills and Northwest Lake Sammamish Interceptor Upgrade

North Mercer Island and Enatai Interceptors Upgrade

Coal Creek Siphon and Trunk Parallel

# Sunset/Heathfield Pump Station Upgrade



# Sunset/Heathfield Pump Station Upgrade

**Benefits:** Convey existing and future flows, improve operational flexibility and maximize reliability

**Scope:** Upgrade capacity of pump stations, gravity pipe and force main

**Status:** Directional Drilling complete, open cut ongoing, mechanical and electrical equipment replacements ongoing

**Timeline:** Substantial Completion early 2020

**Estimated Total Project Cost:** \$75 Million

# Sunset/Heathfield Pump Station Upgrade



①

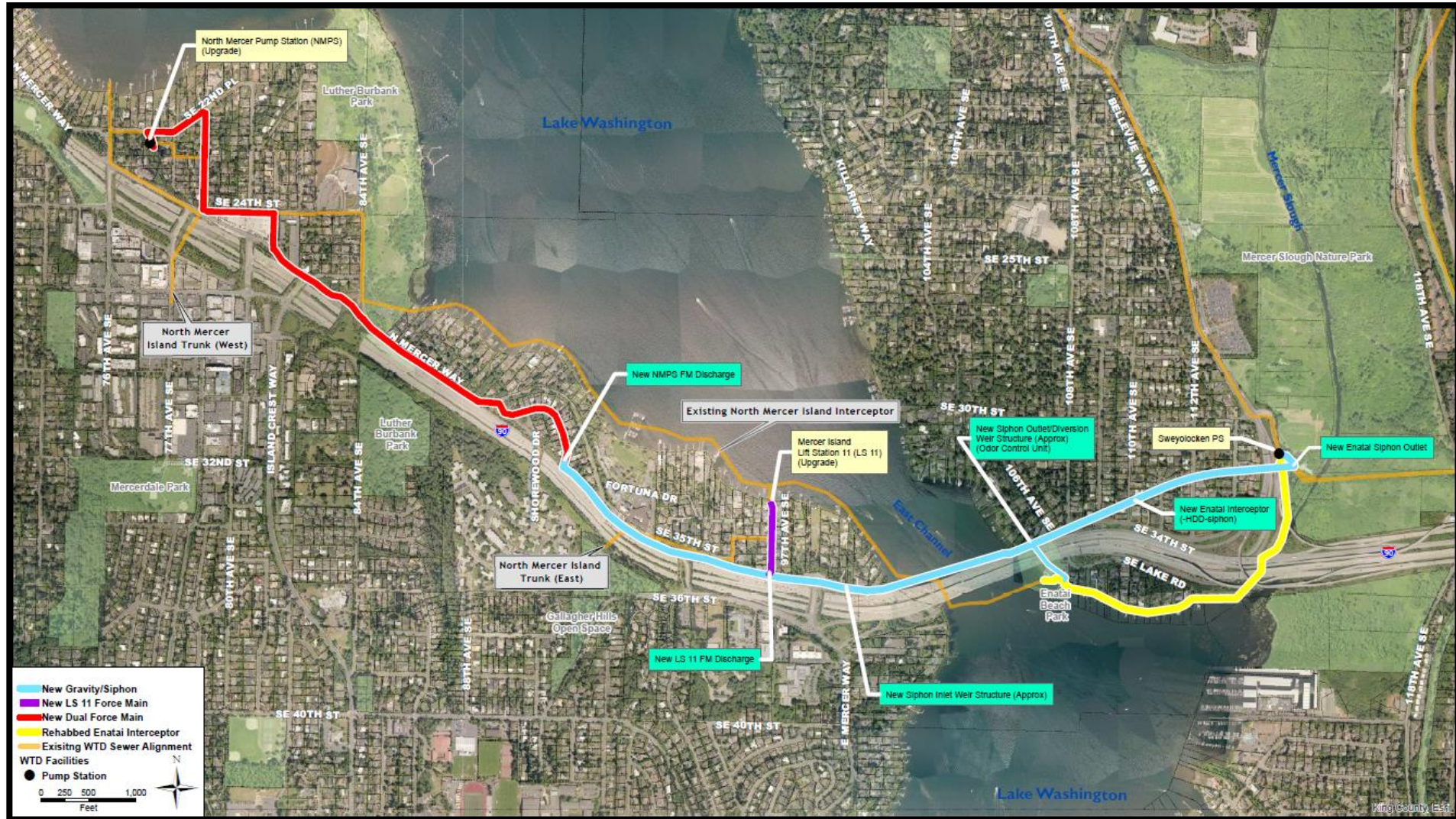


②



③

# North Mercer/Enatai Interceptors Upgrade



# North Mercer/Enatai Interceptors Upgrade

**Benefits:** Convey existing and future flows, improve operational flexibility and reliability

**Scope:** Increase capacity by upgrading pump station equipment, replacing force mains and gravity pipe and rehabilitating existing pipe

**Status:** Final design underway, currently finishing 90% design

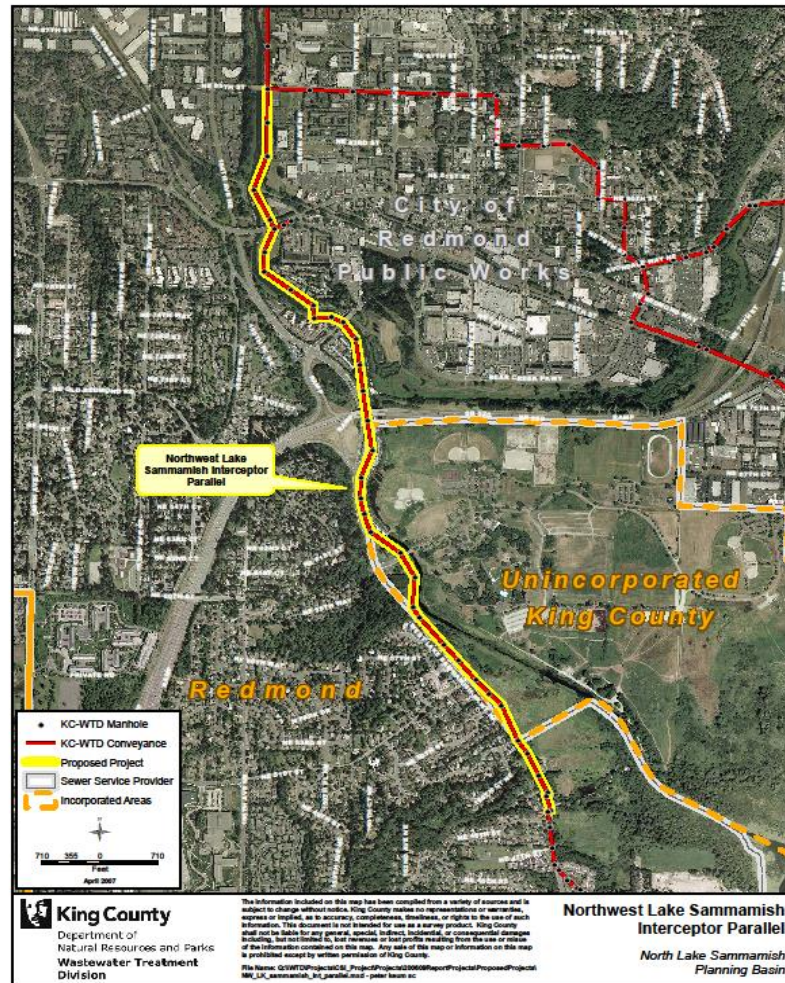
**Schedule:** Construction 2020–2024

**Estimated Total Project Cost:** \$145.5 million

# North Mercer/Enatai Interceptors Upgrade



# Lake Hills Trunk/Northwest Lake Sammamish Interceptor



# Lake Hills Trunk/Northwest Lake Sammamish Interceptor

**Benefits:** Convey existing and future flows, improve operational flexibility and reliability

**Scope:** Increase capacity by upgrading pipe, replacing gravity pipe and rehabilitating existing pipe

**Status:** 90% design

**Schedule:** Construction contract advertised in January 2021, Construction Notice to Proceed in April 2021, Substantial Completion July 2024

**Estimated Total Project Cost:** \$119 Million

# Coal Creek Siphon and Trunk Parallel



# Coal Creek Trunk

**Benefits:** Convey existing and future flows, and remove active sewer from creek habitat and park area

**Scope:** Upgrade capacity to meet year 2060, 20-year peak flow criteria by upsizing 6,000+ feet of sewer

**Status:** Preliminary Design complete

**Timeline:** Construction Notice to Proceed in Q2 2022 and Substantial Completion in Q2 2026

**Estimated Total Project Cost:** \$132 Million

# Questions / Discussion



## Contact

Steve Tolzman, CSI Program Manager

206.477.5459

[steve.tolzman@kingcounty.gov](mailto:steve.tolzman@kingcounty.gov)