

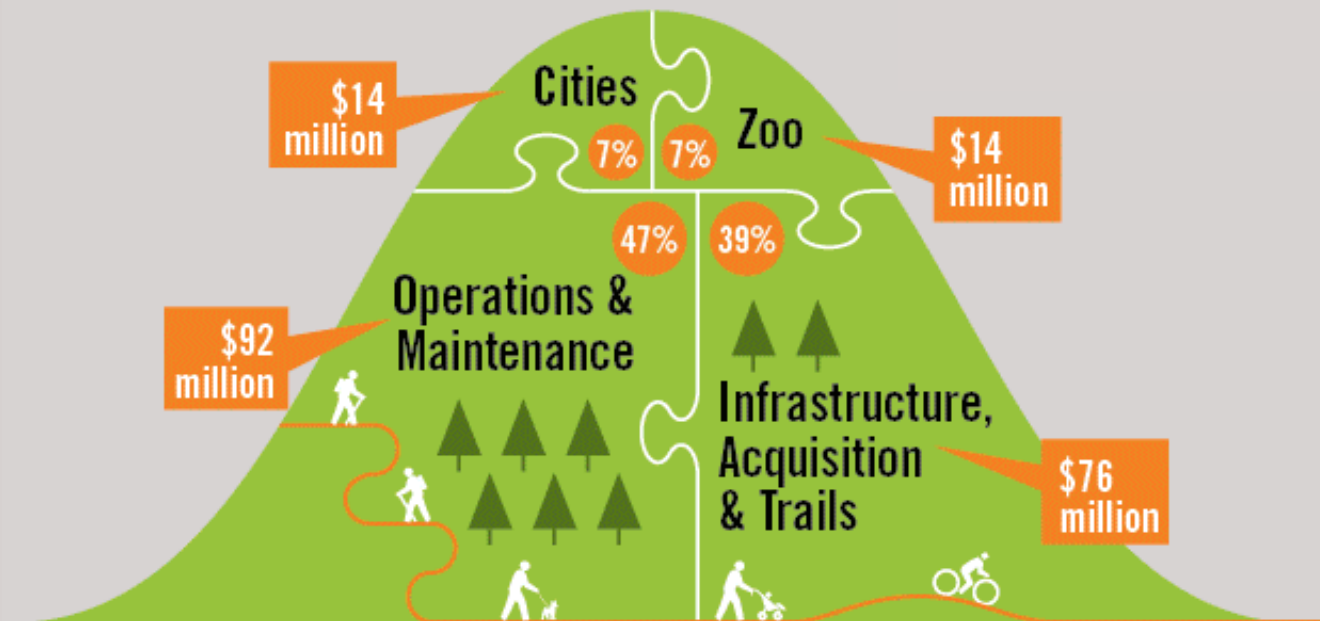


# 2014-2019 KING COUNTY PARKS, TRAILS AND OPEN SPACE REPLACEMENT LEVY

*2014-2016 Progress Report*



As of December 2016, the levy has provided  
\$196 million for the following



Parks'  
Operating Funds



Parks'  
Capital Funds



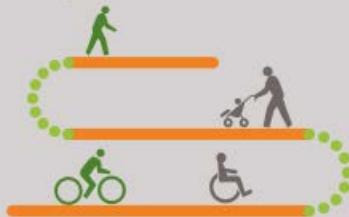
in grants and  
business revenue

## Focus areas of the levy



Levy goal 1

**Take care of King County's existing system of parks and trails**



Levy goal 2

**Improve regional trails and non-motorized mobility**



Levy goal 3

**Grow and connect regional open space**



Levy goal 4

**Make parks and recreation more accessible**



Levy goal 1

# Take care of King County's existing system of parks and trails

Rehabilitated

6 

of 13 play areas

- South County Ballfields
- Cottage Lake Park
- Five Mile Park
- Ravensdale Park
- Tolt-MacDonald Park
- Big Finn Hill Park

Operate and maintain King County's  
28,000 acres  
of open space



Repaired or replaced  
facilities at

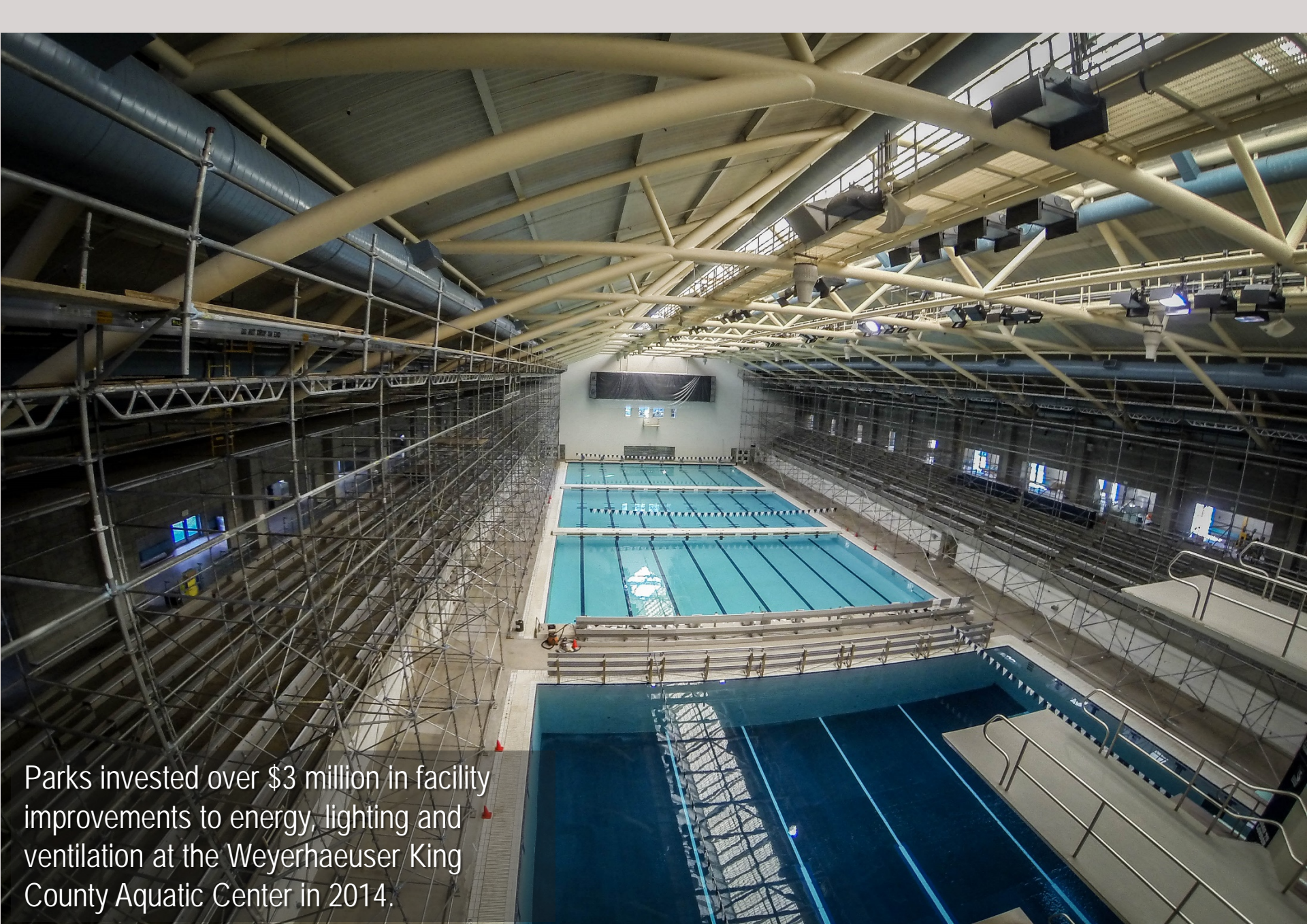


5

of 5  
sites

- Dockton Park
- Weyerhaeuser King County Aquatic Center
- Marymoor Park
- Steve Cox Memorial Park
- Parks Maintenance Headquarters





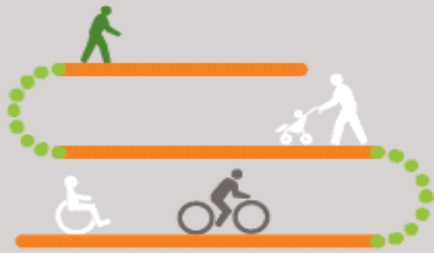
Parks invested over \$3 million in facility improvements to energy, lighting and ventilation at the Weyerhaeuser King County Aquatic Center in 2014.



Parks installed  
a new play area  
at Big Finn Hill Park  
in 2016.







Levy goal 2

## Improve regional trails and non-motorized mobility





Parks completed  
a 1.5-mile-long segment  
of the Lake to Sound Trail  
through Burien in March 2017.





Levy goal 3

Grow and connect  
regional open space

acquired



1,157

of 2,700 acres of parkland







Parks added 226 acres to Cougar/Squak Corridor, expanding recreation opportunities in the popular Issaquah Alps.





Levy goal 4

# Make parks and recreation more accessible



Constructed

5

of 11

- Duthie Hill Mountain Bike Park
- Taylor Mountain Forest
- Black Diamond Open Space – east
- Black Diamond Open Space – west
- Pinnacle Peak Park

trailheads



Distributed more than

**\$26 million**

to King County cities for  
local parks projects and  
the Woodland Park Zoo





Parks invested \$2.5 million to enhance recreation facilities through the Community Partnerships and Grants Program, including a bicycle playground at Dick Thurnau Memorial Park.







For more information about the Parks Levy: [\*www.kingcounty.gov/parks/levy\*](http://www.kingcounty.gov/parks/levy)