



WHY METRO MATTERS

TRANSIT IS GOOD FOR OUR ECONOMY, OUR ENVIRONMENT, AND OUR PEOPLE.

TRANSIT MOVES PEOPLE BETTER.

In cities everywhere, transit is the most effective way to move the most people. One full Metro bus carries the same number of people as 60+ cars.

1 FULL BUS



60+ PEOPLE DRIVING ALONE



MOBILITY IS NOW THE #1 CONCERN OF PEOPLE IN OUR REGION.



WE SPEND 34 MINUTES OF EVERY PEAK COMMUTE HOUR STUCK IN TRAFFIC.

WE ARE STUCK IN TRAFFIC **83 HOURS** PER YEAR
That's enough time to...

Listen to the entire Pearl Jam catalog



9 times

Hike Mount Si

17 times



Attend your kid's school play



55 times

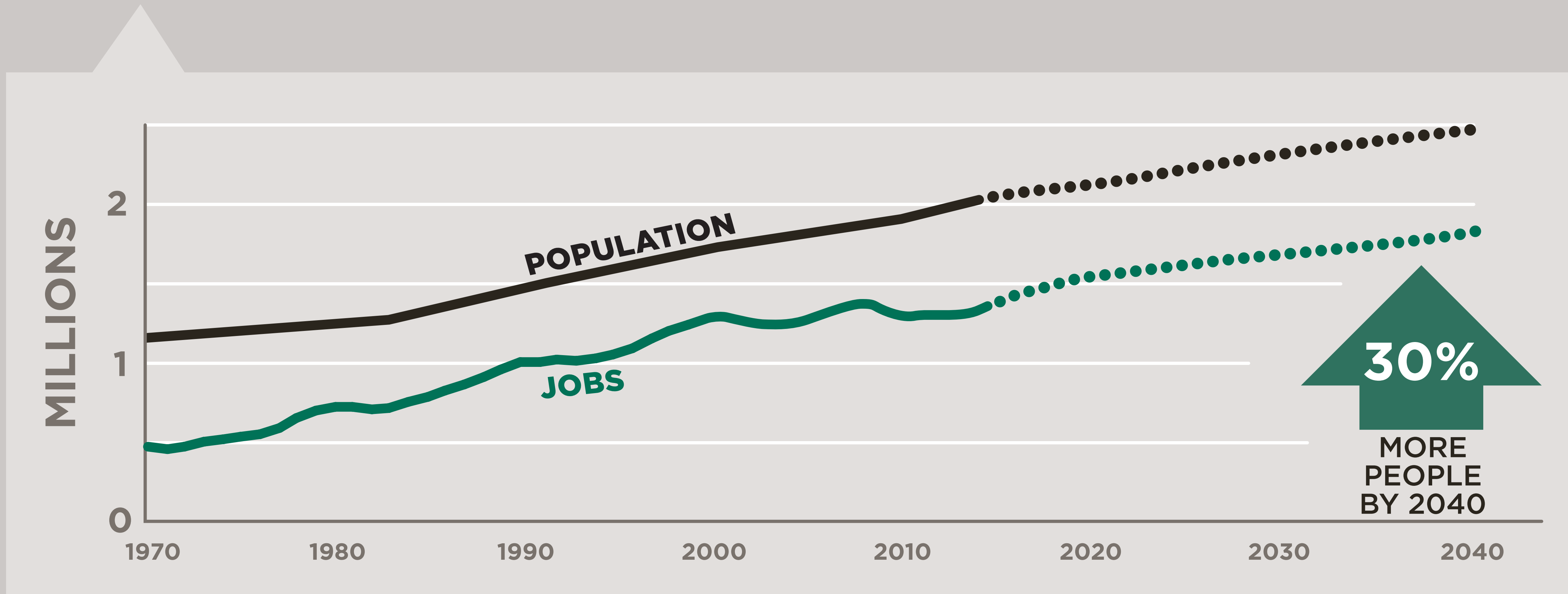
Watch the Seahawks play



26 times

EVEN MORE PEOPLE ARE COMING TO KING COUNTY.

Our beautiful county is home to 2 million people and 1.3 million jobs, and is one of the fastest growing counties in the U.S.



OPTIONS TO GET MORE PEOPLE, MORE PLACES, MORE OFTEN.

Metro is part of a healthy transportation system that frees us to go where we need to and do things we enjoy.

I RIDE THE BUS
downtown for a cheaper
and stress-free daily
commute.



I RIDE WITH OTHERS
so I don't have to buy
another car.



I BIKE to work to build
exercise into my day.



**89% of Metro
riders own a car
and choose
to ride the bus.**

**EVEN THOUGH
I OWN A CAR...**

I TAKE LIGHT RAIL
to the stadium
so I don't have to
fight game day
traffic.

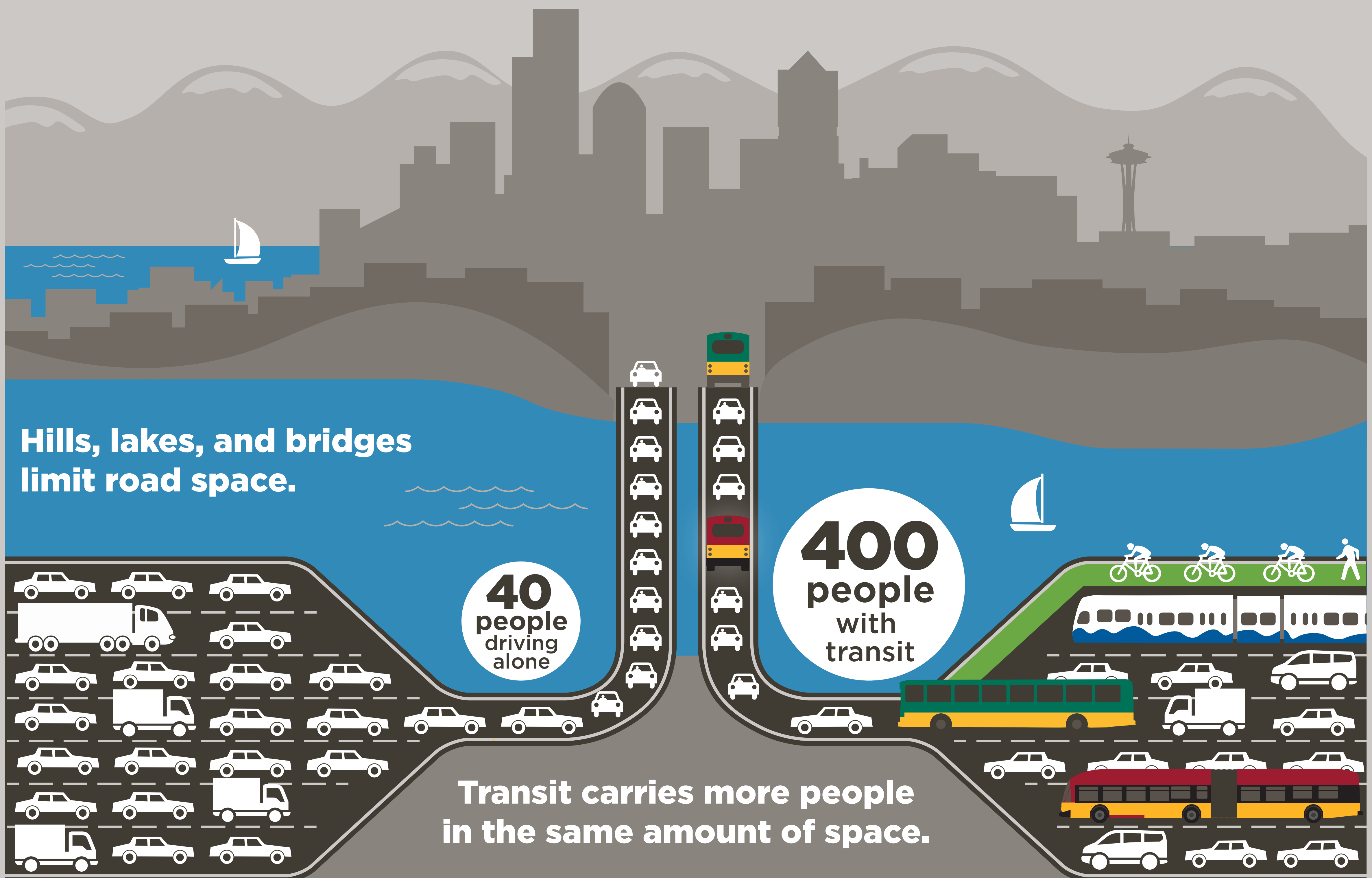


I DRIVE MY CAR to
the store when I'll
have a lot to carry.



CHOOSING METRO MAXIMIZES THE ROADS WE HAVE.

Transit takes 175,000 cars off the road each weekday, reducing congestion and saving everyone time—whether or not you ride the bus.



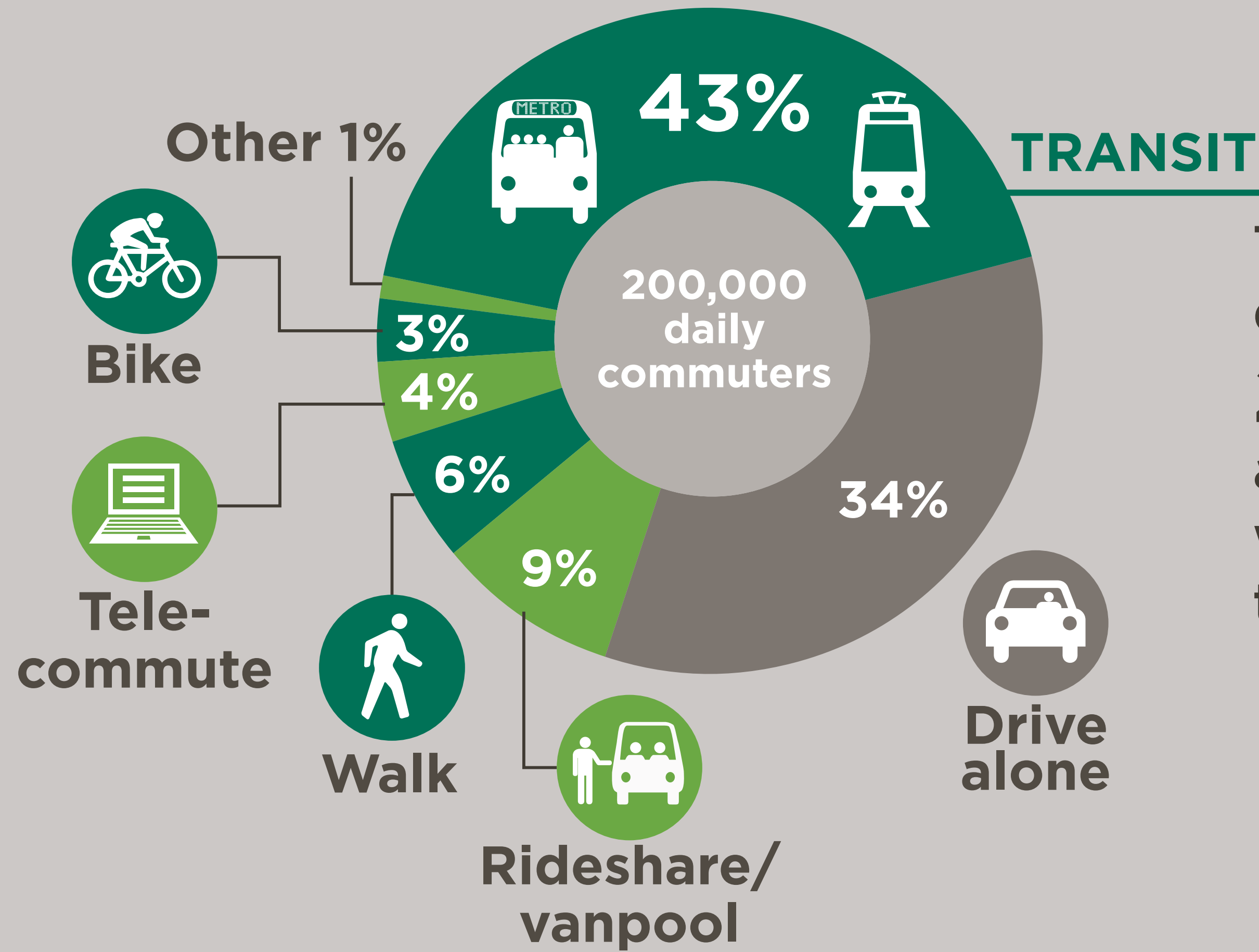
METRO IS AN IMPORTANT CHOICE FOR MANY PEOPLE.



AND DEMAND IS STILL GROWING!

METRO CONNECTS PEOPLE TO JOBS

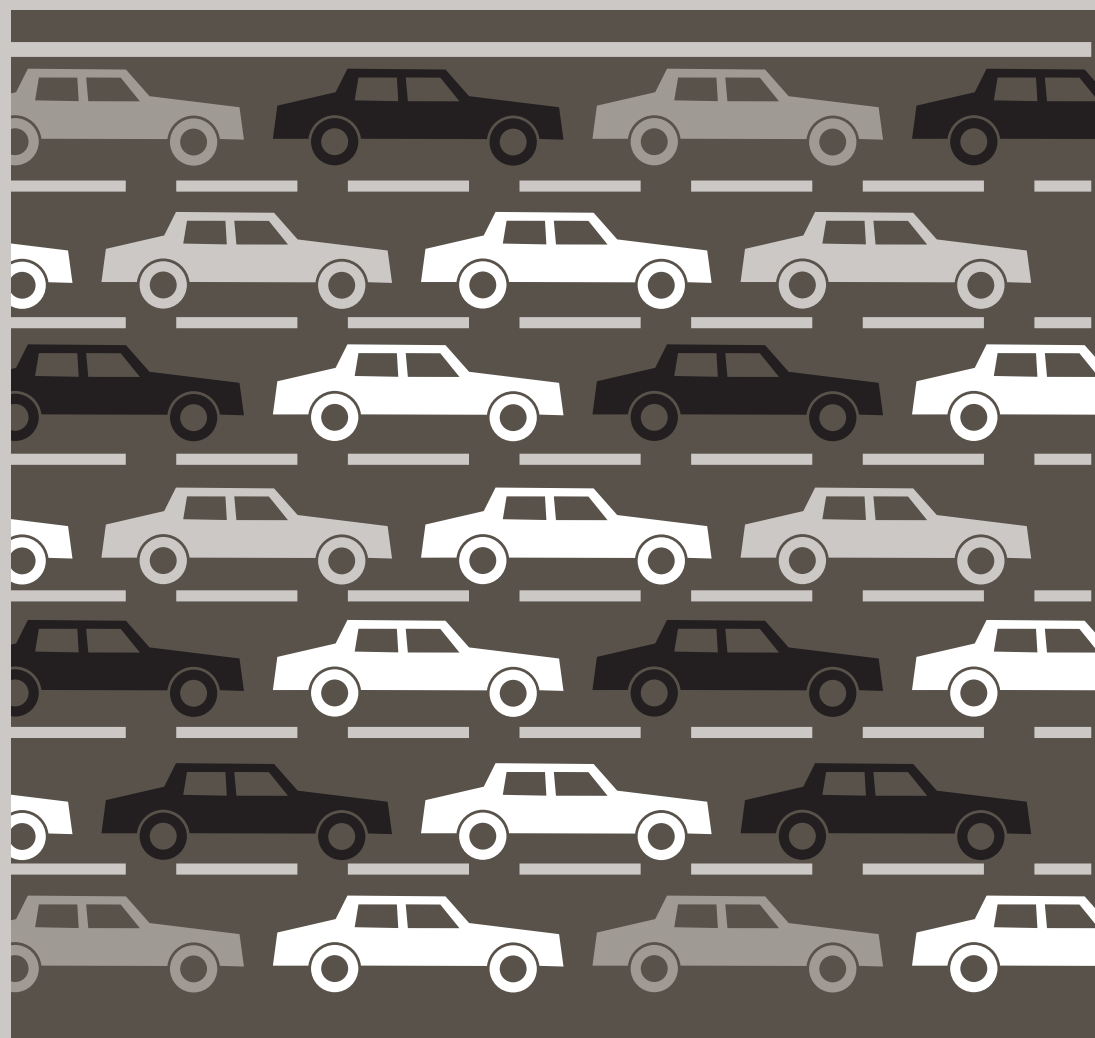
King County is Washington state's economic hub, and Metro provides reliable daily transportation to job centers across the region.



Two-thirds of downtown Seattle's **200,000 workers** are choosing better ways to commute than driving alone.

FASTER COMMUTES

During peak commute hours, Metro frees up the equivalent of...



MORE THAN JUST BUSES

Metro operates the nation's largest public vanpool program.



8,000 people use Metro vanpool each weekday.

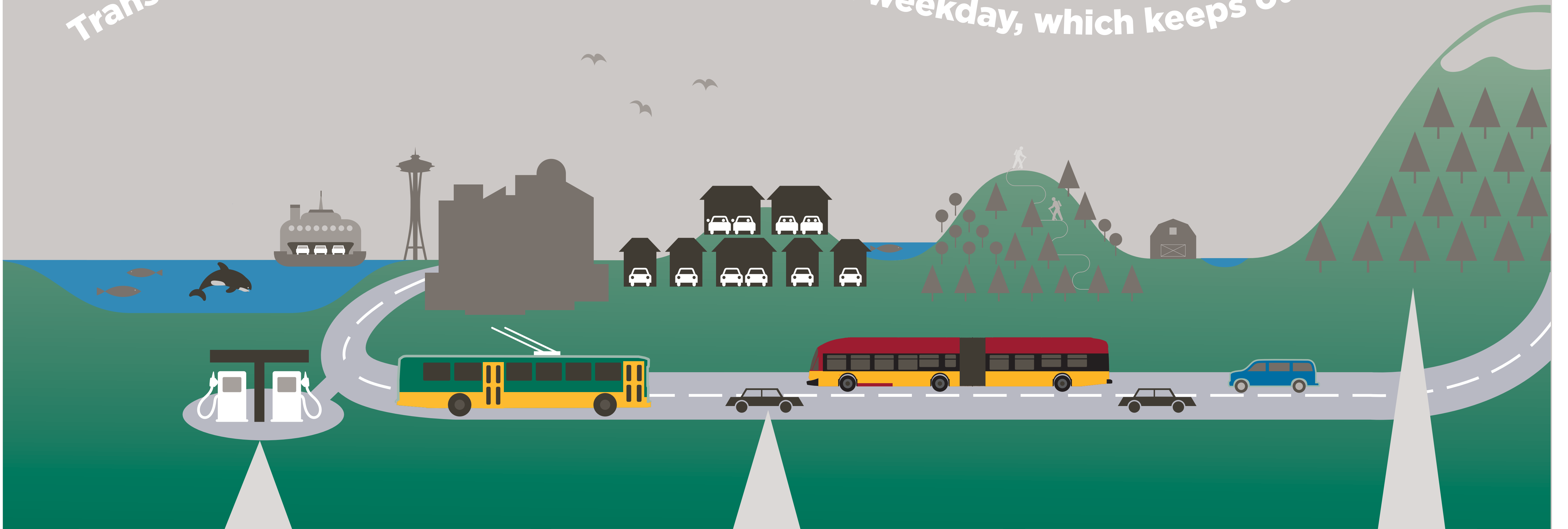


More than **1,600** local companies contract with Metro for employee bus passes.

METRO PROTECTS THE ENVIRONMENT

Operating the nation's second largest fleet of zero-emission electric buses uses less energy, reduces pollution, and makes for healthier communities.

Transit takes **175,000** cars off the road each weekday, which keeps our air cleaner.



70 MILLION GALLONS OF GASOLINE SAVED



ENOUGH TO POWER THE DRIVING HABITS OF EVERY HOUSEHOLD IN BELLEVUE AND KENT FOR A YEAR.

1.4 BILLION FEWER VEHICLE MILES LOGGED ON LOCAL ROADS

EQUAL TO:



600,000 FEWER METRIC TONS OF CO₂ RELEASED INTO THE AIR

EQUAL TO:

15 MILLION TREES

PLANTED & GROWN FOR 10 YEARS

BY THE NUMBERS: **METRO'S** ENVIRONMENTAL BENEFITS (NET ANNUAL)

METRO PROVIDES TRANSIT FOR ALL OF US



All kinds of people use transit. For many of us, it's our only option because of age, income, or ability.



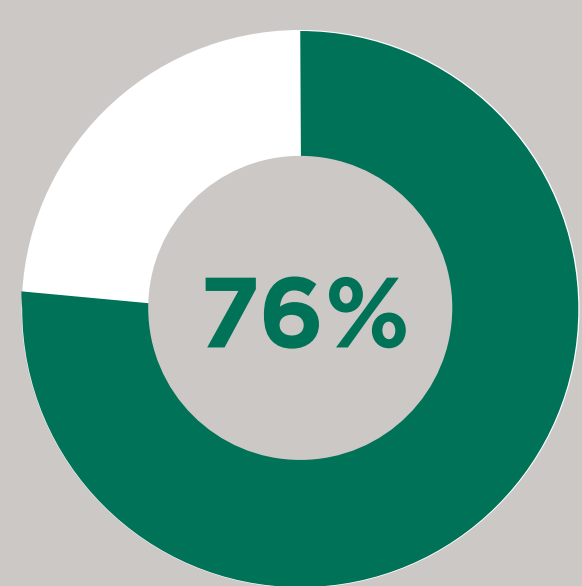
Because it's the right thing to do, Metro connects us to the most important places in our lives—jobs, school, health care, family, and friends.

METRO'S ACCESSIBILITY

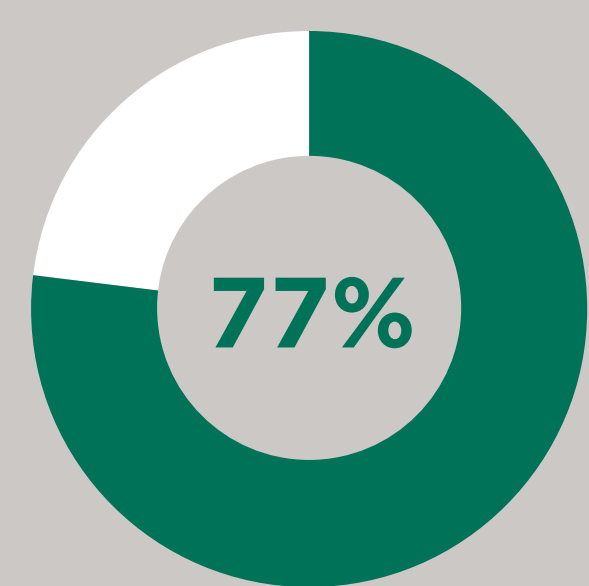
Metro will offer a reduced fare starting in 2015 to provide more people and communities with transportation choices.



What's within 1/4 mile of a bus stop?



of low-income households



of jobs in King County

Local colleges where a total of

150,000+
students attend



Access and community transportation



Metro serves people who are ADA paratransit eligible.

Using transit saves you money.



UP TO **\$1,000/mo**

WHAT'S NEXT FOR TRANSIT IN OUR REGION?

King County is committed to moving people better and working with communities to improve transit service for everyone.

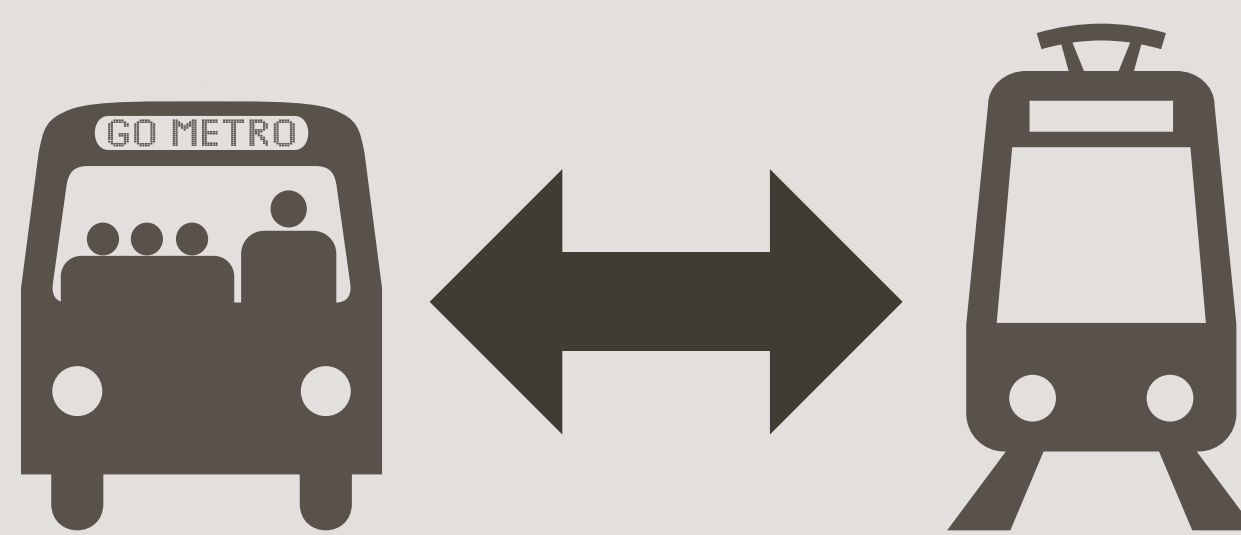
STABLE FUNDING SOURCES

Metro will collect \$1.2 billion less in sales tax than was projected for 2009-2015. King County leaders will continue to work with the Legislature to create sustainable funding authority for Metro.



INTEGRATING WITH SOUND TRANSIT

Customer satisfaction with Metro reached 85% in 2013. Integrating more services with Sound Transit will lead to new opportunities for making the rider experience even better.



INNOVATIVE SERVICES

Metro will continue to innovate and adapt to ever-changing needs, which is what services like RapidRide are all about.



Ridership on Metro's RapidRide lines is up nearly 40% and far outpacing the bus routes they replaced.

To learn more about why Metro matters, go to:
kingcounty.gov/exec/metro

For detailed source information, go to:
kingcounty.gov/exec/metro/sources

