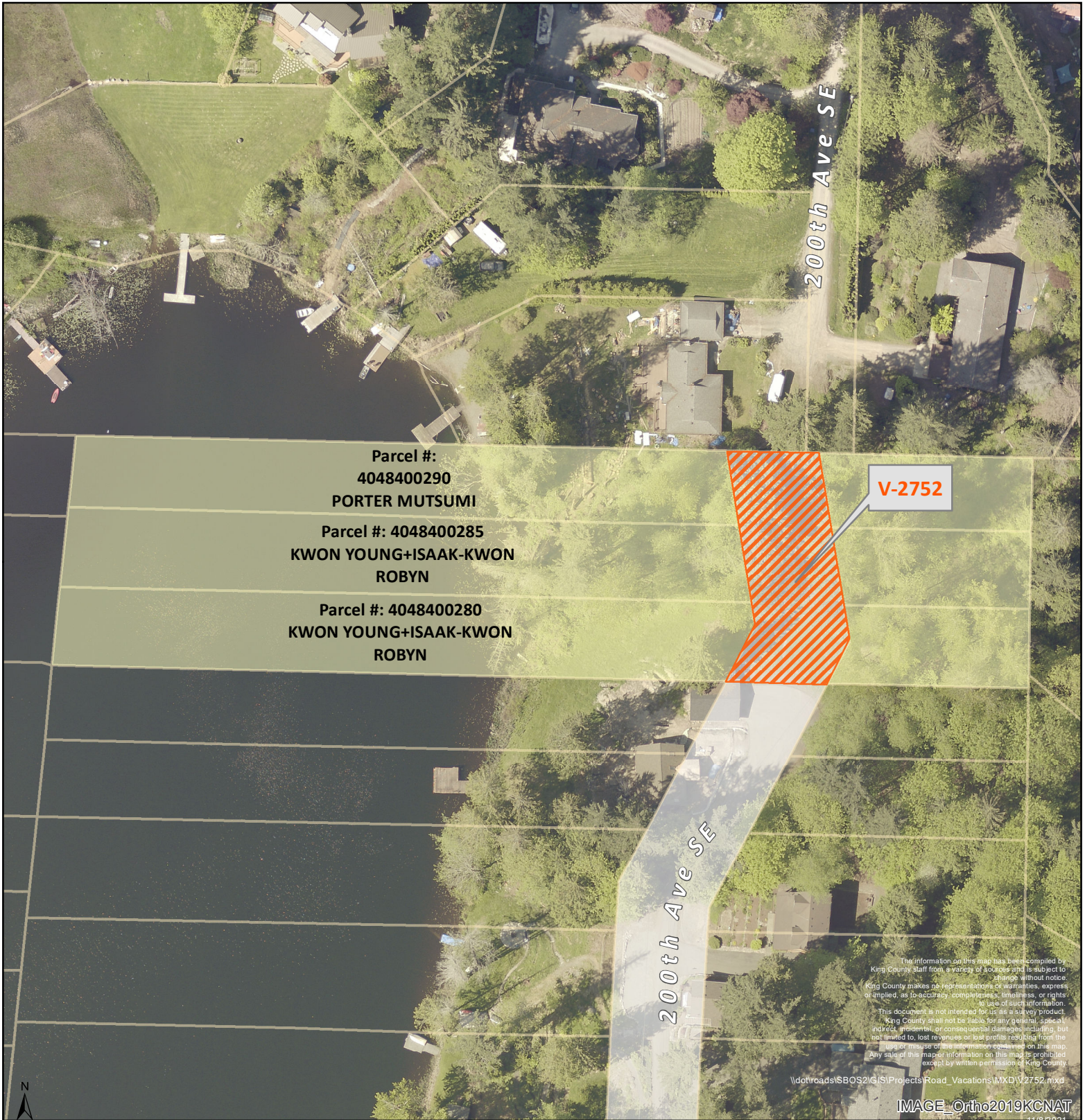
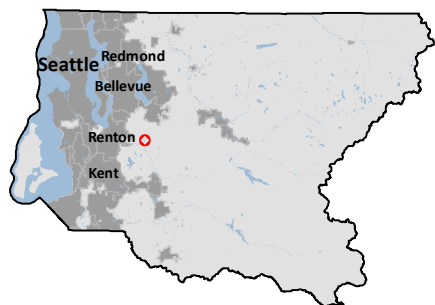






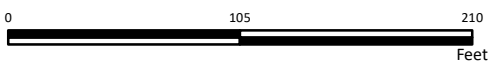
PROPOSED RIGHT-OF-WAY VACATION V-2752



Vacation File: V-2752
 200th Ave SE
 NW 20 23 06
ROW Area (Approximate):
 9,370 FT2 or .215 Acres



-  Pending Road Vacation
-  Petitioner Parcel
-  Roadlog - Unincorporated, Maintained Streets
-  King County Right of Way



FOR INFORMATIONAL USE ONLY