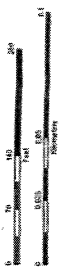




The information shown on this map is based on the most current data available. It is not a guarantee of accuracy. The King County Department of Public Works is not responsible for any errors or omissions. The user assumes all liability for any use of this information.



ATTACHMENT D

- Legend**
- Channelization Plan
  - Tax Parcels
  - Water Courses

# NE Woodinville-Duvall Rd @ 212th Ave NE Channelization Plan

2010-0454  
Attachment D

