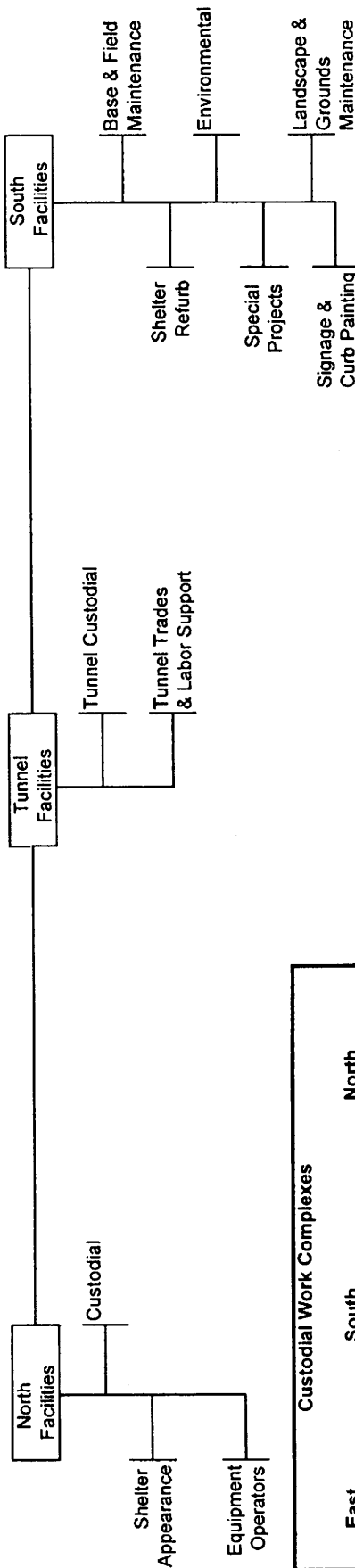


**EXHIBIT C - FACILITIES WORKSITE**



**Custodial Work Complexes**

East	South	North
East Base	South Base	North Base
Bellevue Base	Safety/Training	North Facilities
Van Center	South Facilities	
	Component Supply Ctr	
	Construction Trailer	
<b>Central</b>		<b>Tunnel</b>
Central & Atlantic Bases		IDS
Revenue Processing		PSS
Power Distribution		USS
Ryerson Base		WLS
Marketing		CPS
Transit Control Center		SLUS
NRV		

Scheduled overtime will be assigned to Employees who have signed the "Overtime List" first by shift, then by seniority.

**Non-Custodial Classifications:**

- 1st - within the area of responsibility/pick position
  - 2nd - within the work program (complex)
  - 3rd - within the administrative headquarters
  - 4th - system wide
- \*On holidays employees scheduled to work take precedence over employees on RDO's.

**Custodial Classifications:**

- 1st - within area of responsibility/pick position
- 2nd - by the positions assigned to the specific building within the complex
- 3rd - by the positions assigned to the entire complex including crews.
- 4th - by positions assigned to the administrative chief
- 5th - system wide