

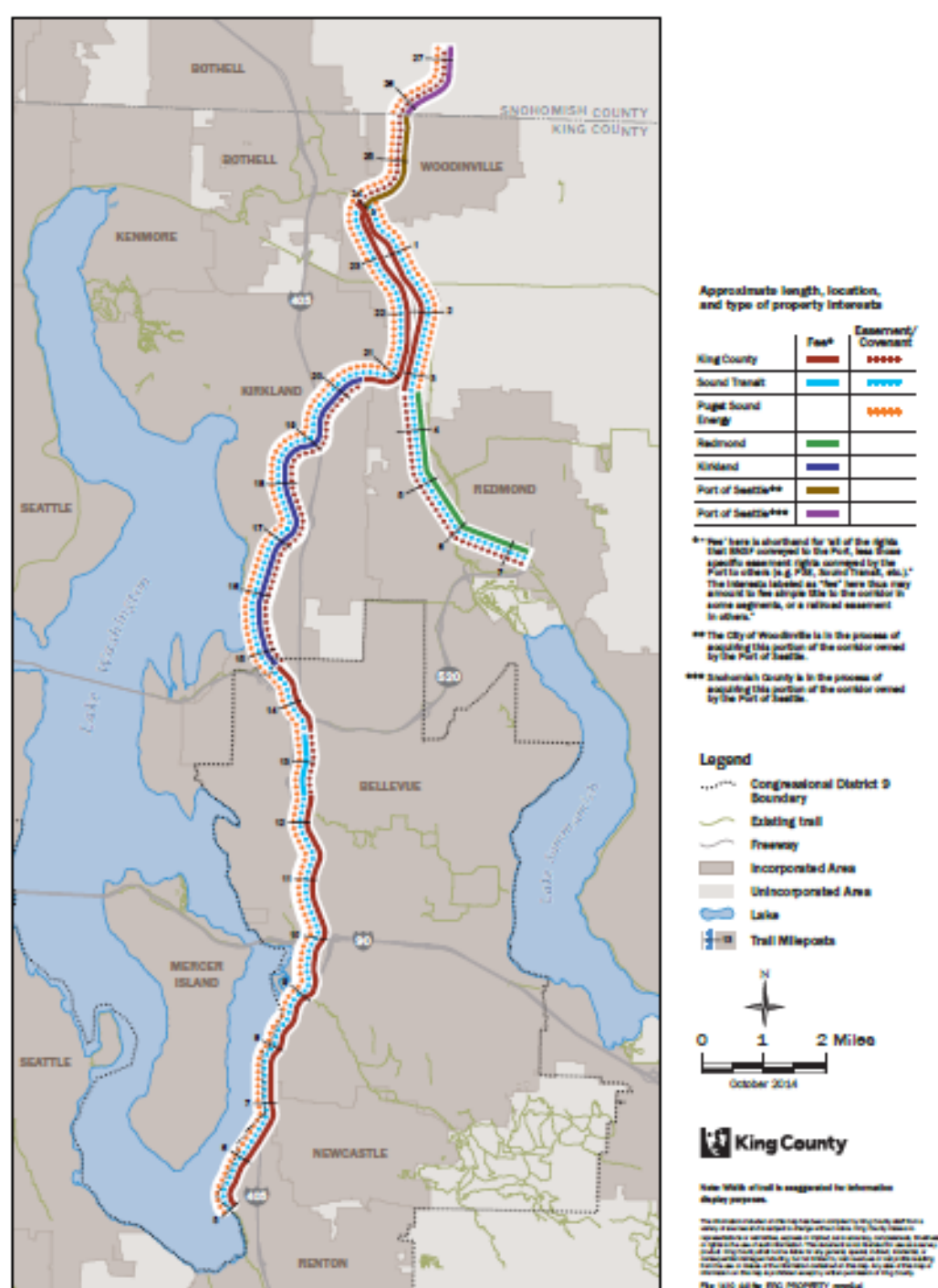
Eastside Rail Corridor Regional Trail Master Plan Project

UPDATE | FEBRUARY 2015

King County Parks **Your**  King County
Big Backyard

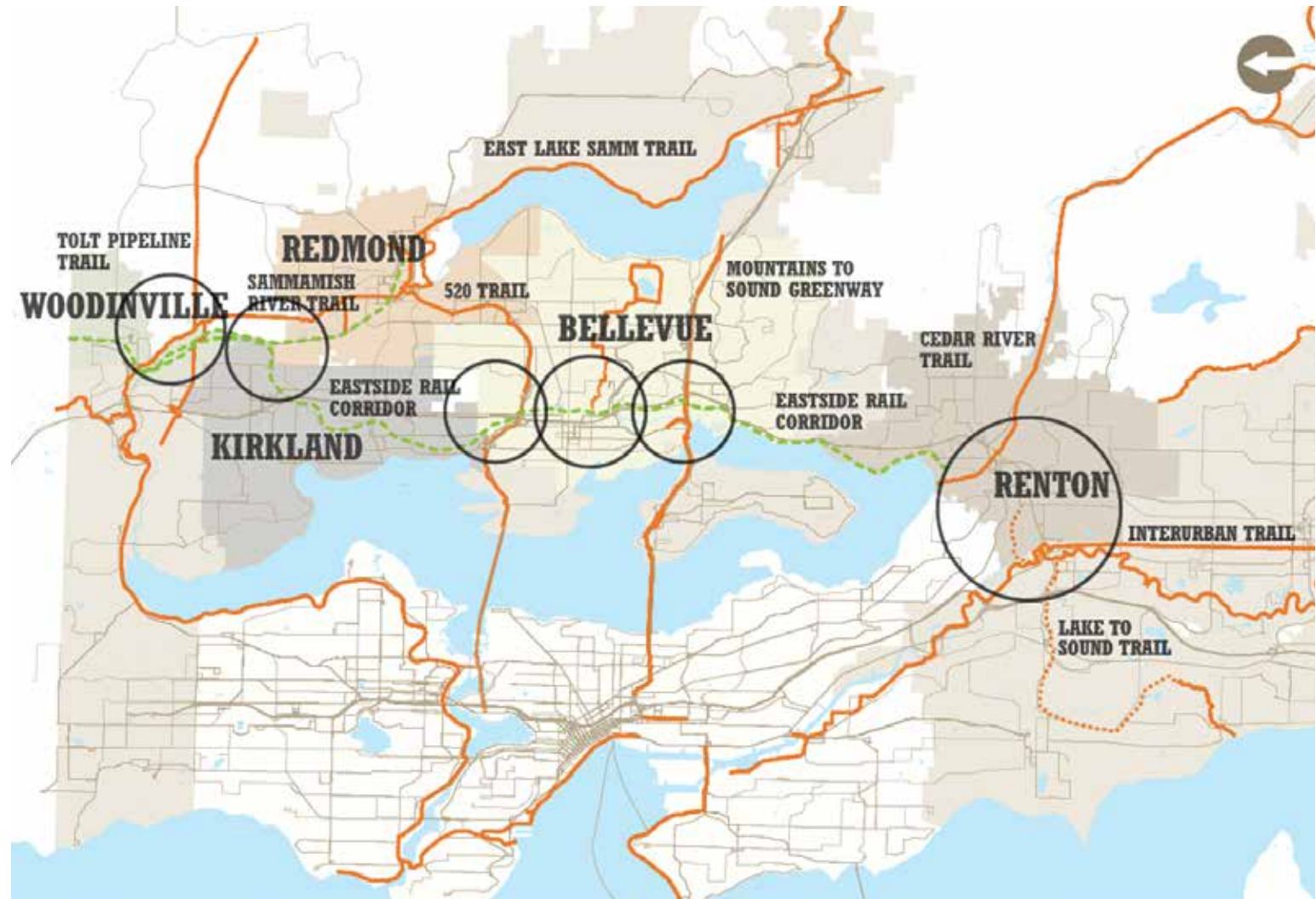


Eastside Rail Corridor Property Interests and Planning Areas



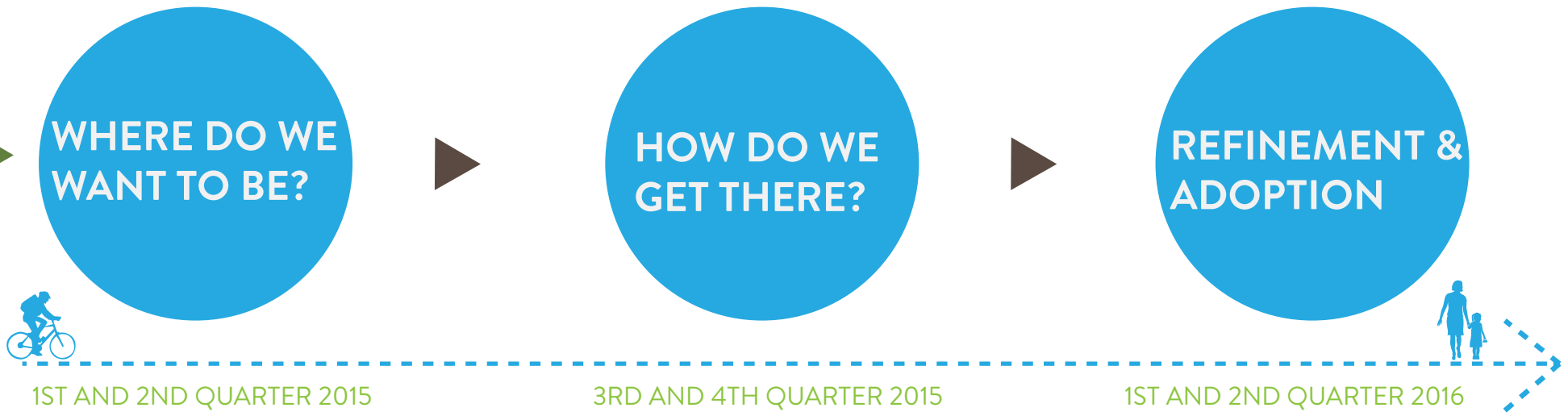
Partner Coordination

- WSDOT
- Sound Transit
- Bellevue
- Woodinville
- Kirkland
- Redmond
- Renton



The Wilburton "Gap" – Reconnecting across I-405





VISIONING

- Engage public and stakeholders
- Communicate RAC Vision
- Develop and communicate KC Parks vision and goals

ANALYSIS

- Engage public and stakeholders
- Begin SEPA scoping
- Identify alternatives for achieving goals and objectives
- Evaluate tradeoffs and impacts

DELIVERABLES

- Engage public and stakeholders
- Issue Draft Master Plan/EIS
- Review comments
- Discuss implementation strategies and priorities
- Select preferred alternative
- Issue Final Master Plan/EIS
- Council adoption (Q3, 2016)

Master Plan Progress

- Corridor inventories complete
 - Ecological resources
 - Narrow right-of-way/ encroachments
 - Intersections/crossings
 - Steep slopes
 - Historic resources
 - Adjacent land uses
- Coordinating with partner jurisdictions to finalize trail connection studies





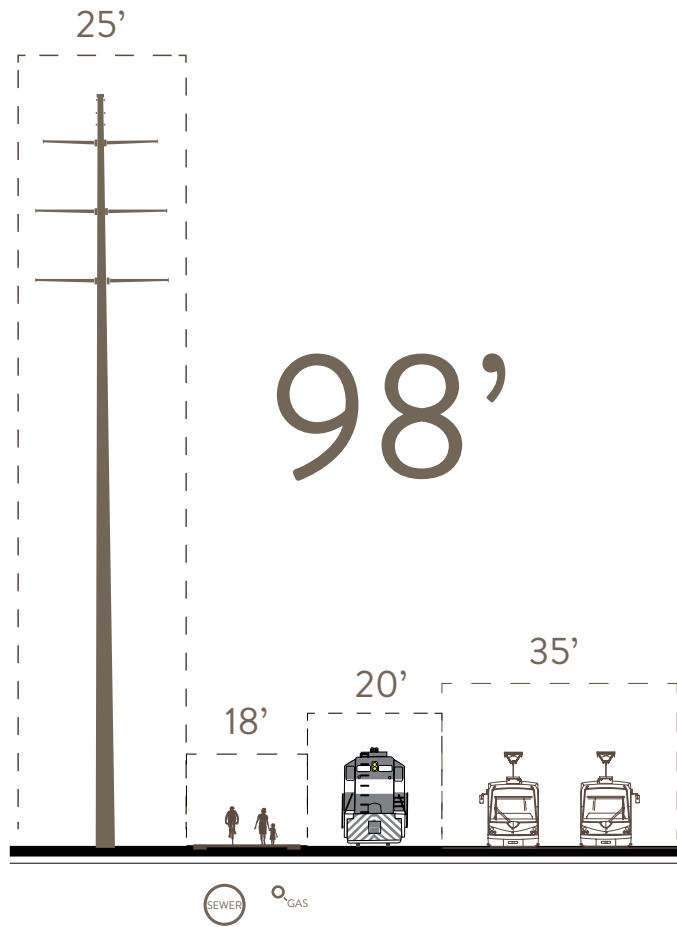
Opportunities:

- Non-motorized transportation
- Recreational opportunities and equitable access
- Community economic development/ quality of life

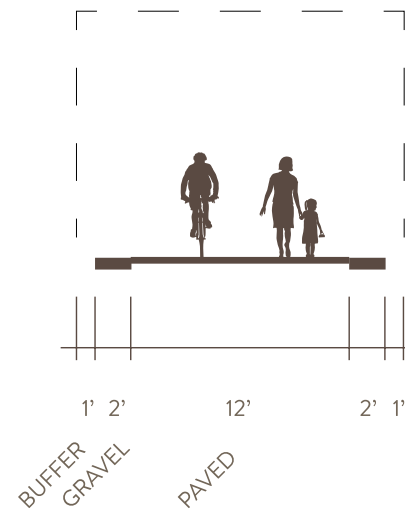
Guiding Principles:

- Plan for a Regional Trail without Precluding Future Use for Transit and Utilities
- Meet Railbanking obligations

Baseline Space Needs



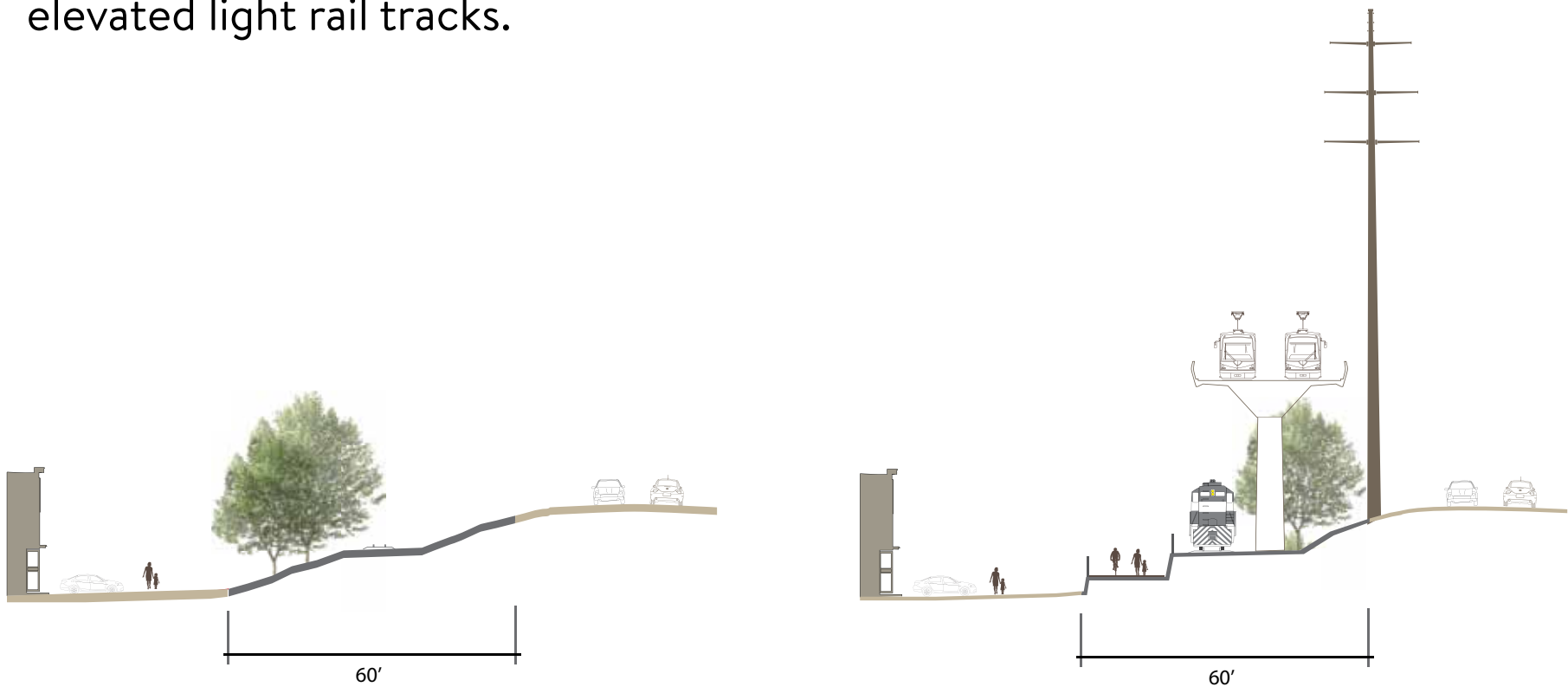
MULTIPLE USE PLANNING ENVELOPES



REGIONAL TRAIL SCHEMATIC

Narrow, Sloping Corridor

- In this narrow section, all uses can only be accommodated with elevated light rail tracks.



Narrow, Sloping Corridor: Existing Condition

Existing section shows railbed with adjacent road and residences.



Narrow, Sloping Corridor: Multiple Use Option

Elevated light rail may allow space for both heavy rail and utilities along with a trail.



Narrow, Sloping Corridor: Trail Placement Alternatives

Trail off railbed may allow future uses without relocating trail.

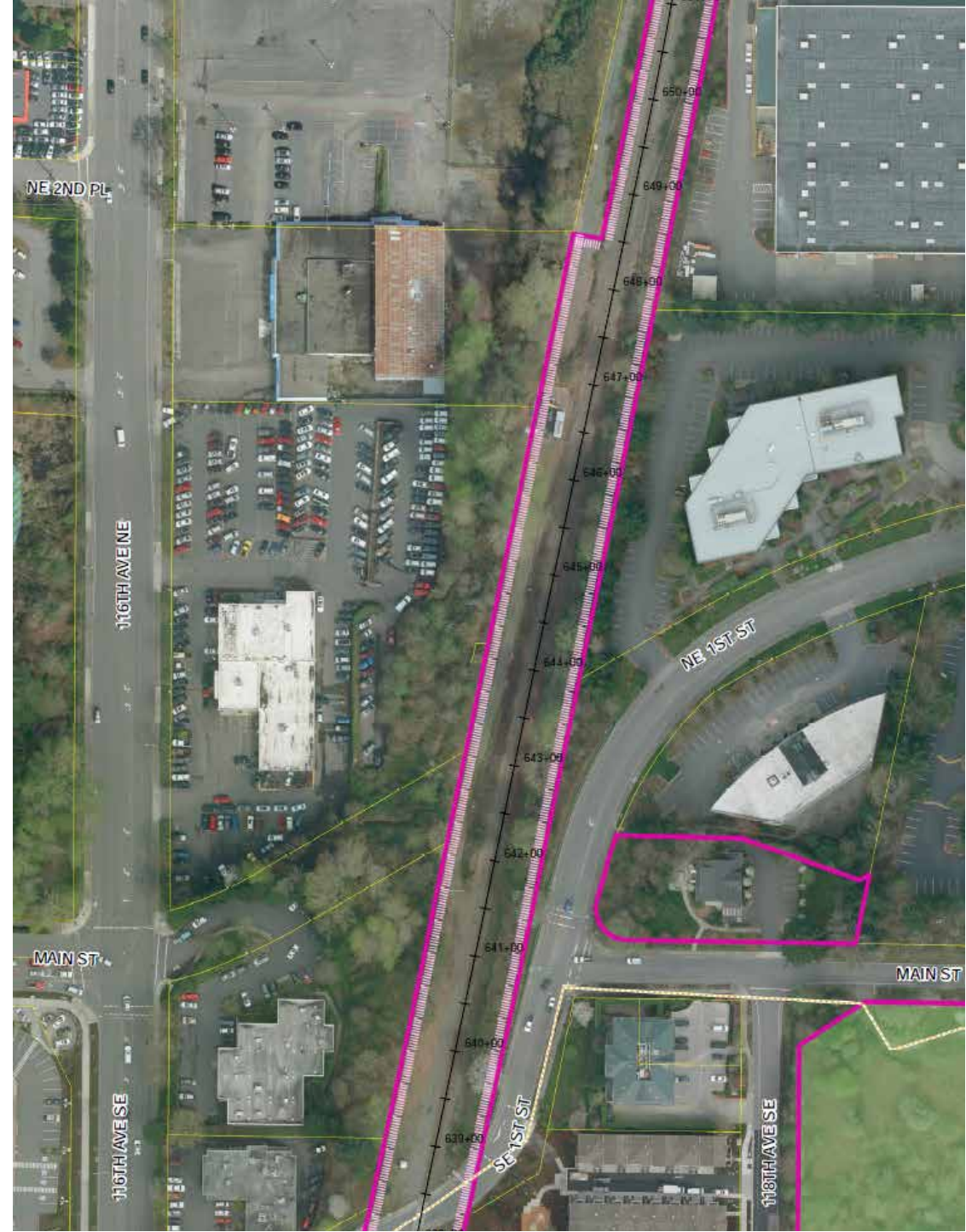


Trail on railbed would likely need relocation to allow other uses.



Property Management

- New Permit Requests
- Existing licenses and permits
- Encroachments



Encroachments

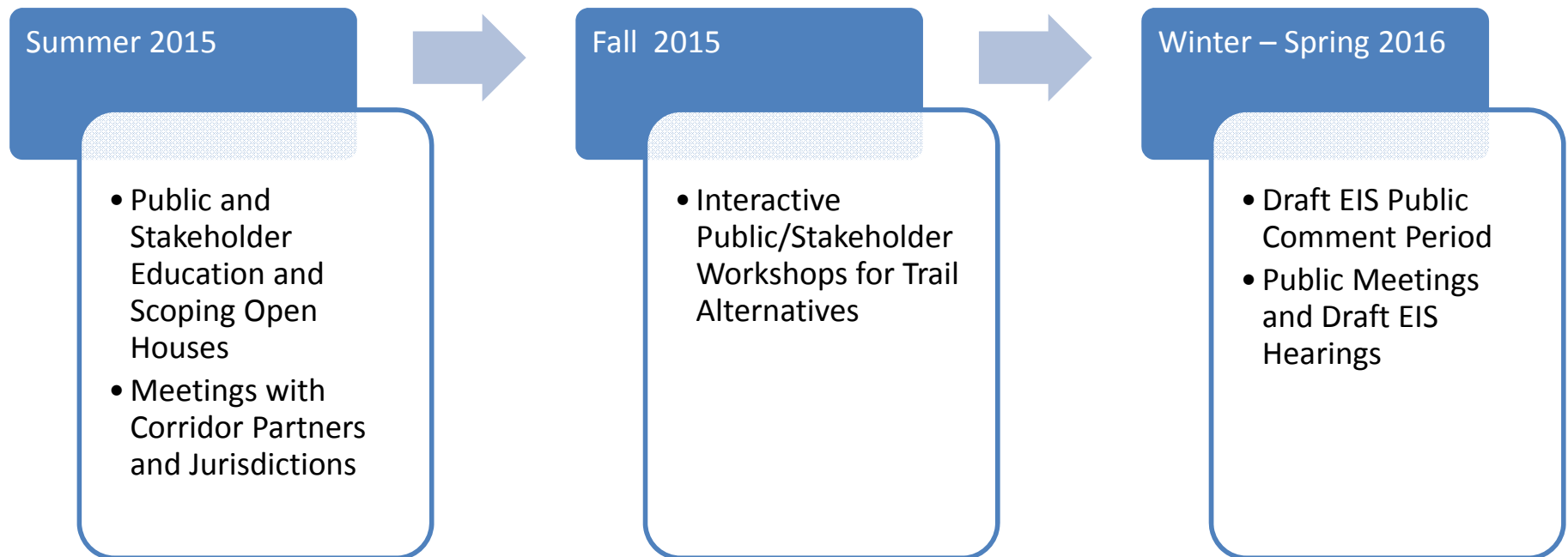
- Actively managing ERC property interests and responding to emerging requests for permits, and non-permitted actions
- Inventory status of existing permits, licenses and uses in ROW
- Plan to permit, license or remove uses and encroachments in the ROW



Master Plan Development & Environmental Process



Public and Stakeholder Involvement



Next Steps

- Publishing reports from Phase 1A corridor inventories and connection studies – March
- Implementing Phase 1B with consultant contract – March/April
- Holding stakeholder outreach in Bellevue – March 17
- Holding coordination meetings with Bellevue, Sound Transit, WSDOT and other agencies – March/April
- Planning environmental and public involvement actions – March-May
- Preparing for Draft EIS Scoping and establishing draft range of alternatives – March-May
- Issuing notice of EIS Scoping and holding public open houses – June

