

Washington Environmental Health Disparities Map

DERIC GRUEN



ESTHER MIN



DEPARTMENT OF ENVIRONMENTAL
& OCCUPATIONAL HEALTH SCIENCES

UNIVERSITY *of* WASHINGTON



Front and Centered 2017 Community Listening Sessions:

Pollution, Climate Change, and the Puget Sound



FRONT AND
CENTERED

Community listening sessions took place in geographically diverse areas throughout the state.



Figure 1. Locations of the eleven community listening sessions with 178 participants in Washington from July to November 2017.



Unfair Share Report



The bottom line: People of color, indigenous peoples, and people with lower incomes frequently face greater risks from climate change.

Environmental Health Disparities Map



W ENVIRONMENTAL & OCCUPATIONAL HEALTH SCIENCES
UNIVERSITY of WASHINGTON | SCHOOL OF PUBLIC HEALTH



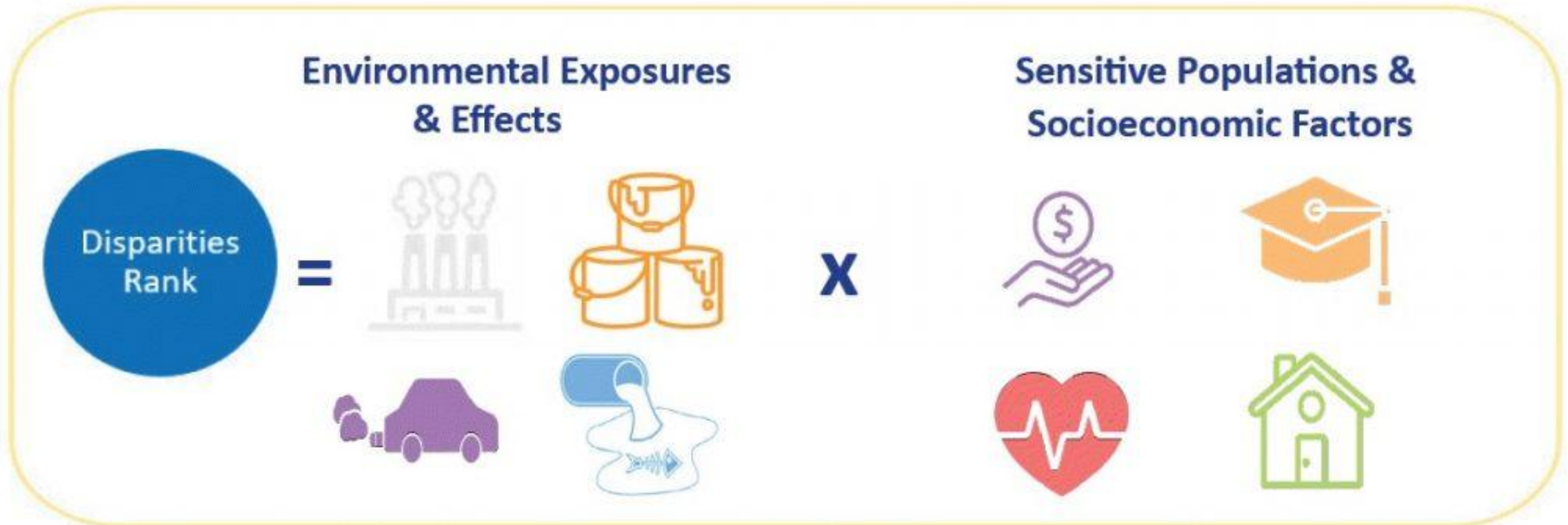
THE INDICATORS

Environmental exposures

Environmental effects

Sensitive populations

Socioeconomic factors



*Icons shown do not represent all 19 indicators on the map.

Wastewater discharge

Washington Tracking Network

The screenshot shows the Washington State Department of Health website. The header includes the logo, navigation links (Home, Newsroom, Publications, About Us), and a search bar. The main navigation menu has categories: You and Your Family, Community and Environment, Licenses, Permits and Certificates, Data and Statistical Reports, Emergencies, and For Public Health and Healthcare Providers. The breadcrumb trail is: Data and Statistical Reports > Environmental Health > Washington Tracking Network (WTN).

Washington Tracking Network (WTN)

Welcome to WTN, your source for environmental and public health data.

Search WTN Data

Sort, export, chart and map data for environmental and public health measures. [Search data now](#)

Information by Location (IBL)

Explore community rankings for topics such as health disparities (differences) and lead exposure risk. View [Information by Location](#) tool now.

WTN Dashboards

View WTN data in a new way. Like our current tools, these [dashboards](#) have maps, charts and graphs. You can see these features in the same view.

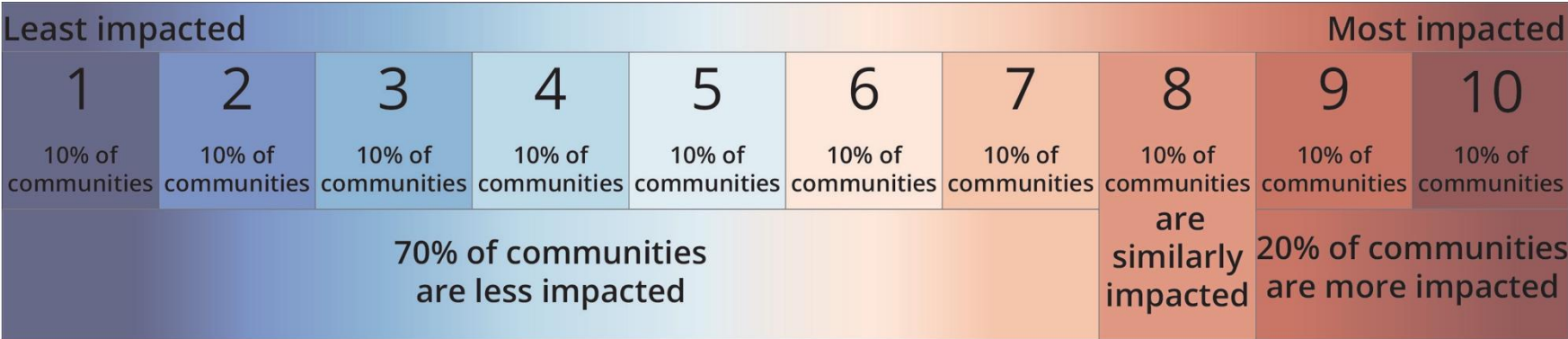
WTN On The Go

Use your phone or tablet to view our new [tool](#) for environmental health topics, such as radon. Touch the maps to see data for your community.

A blue arrow points from the 'Search WTN Data' section down to the 'Information by Location (IBL)' section.

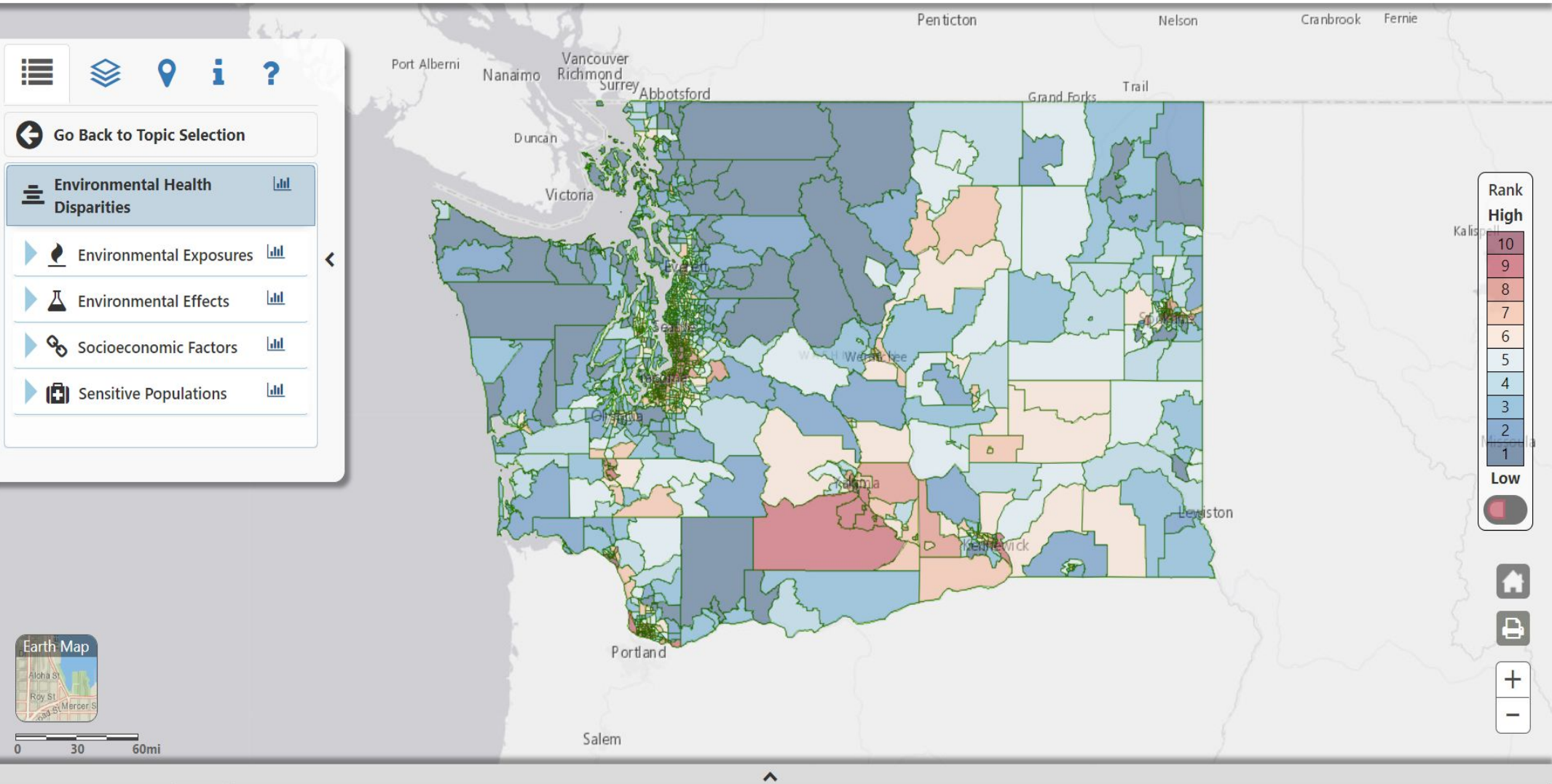
Find it at: fortress.wa.gov/doh/wtn/WTNIBL

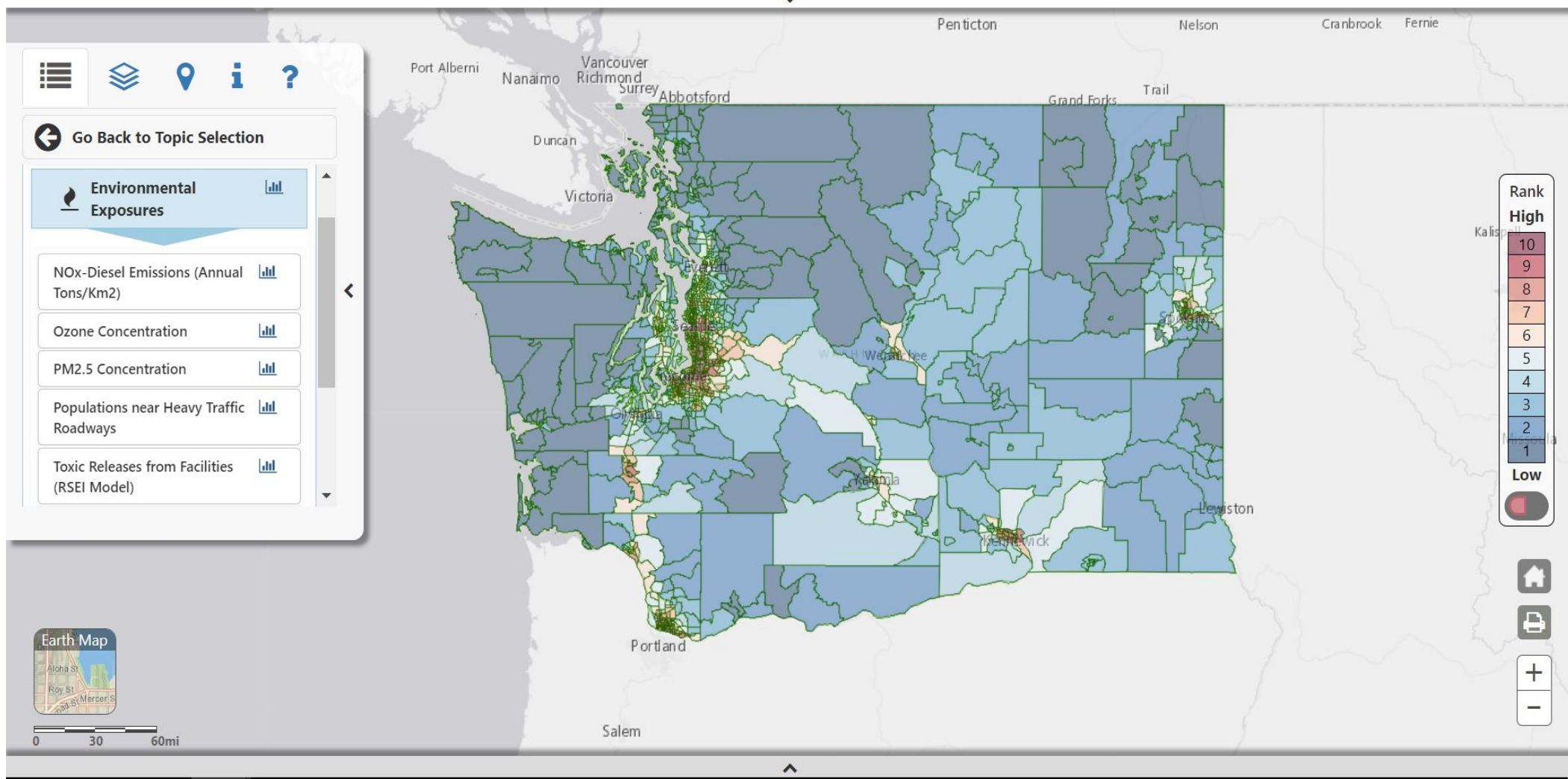
Ranking

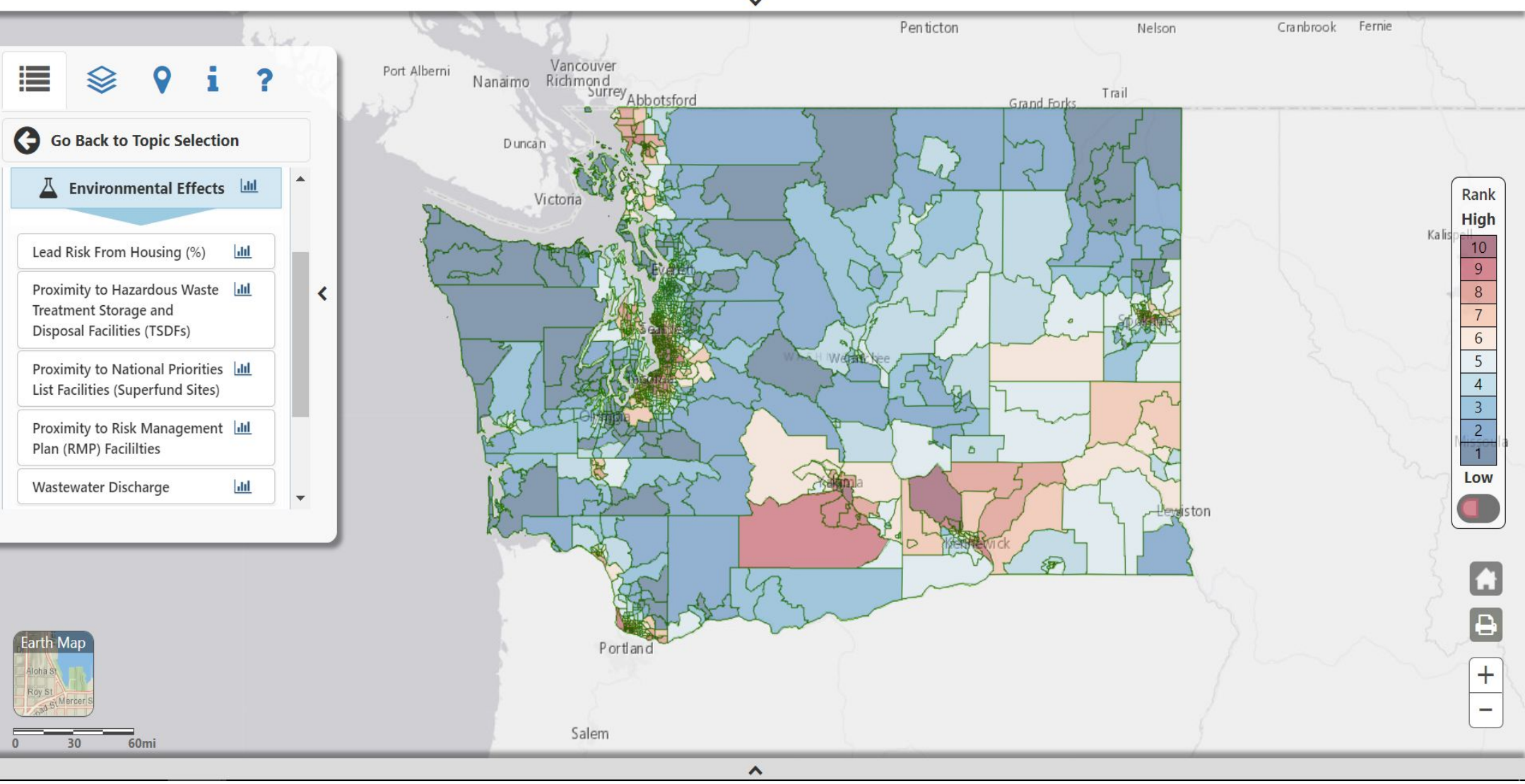


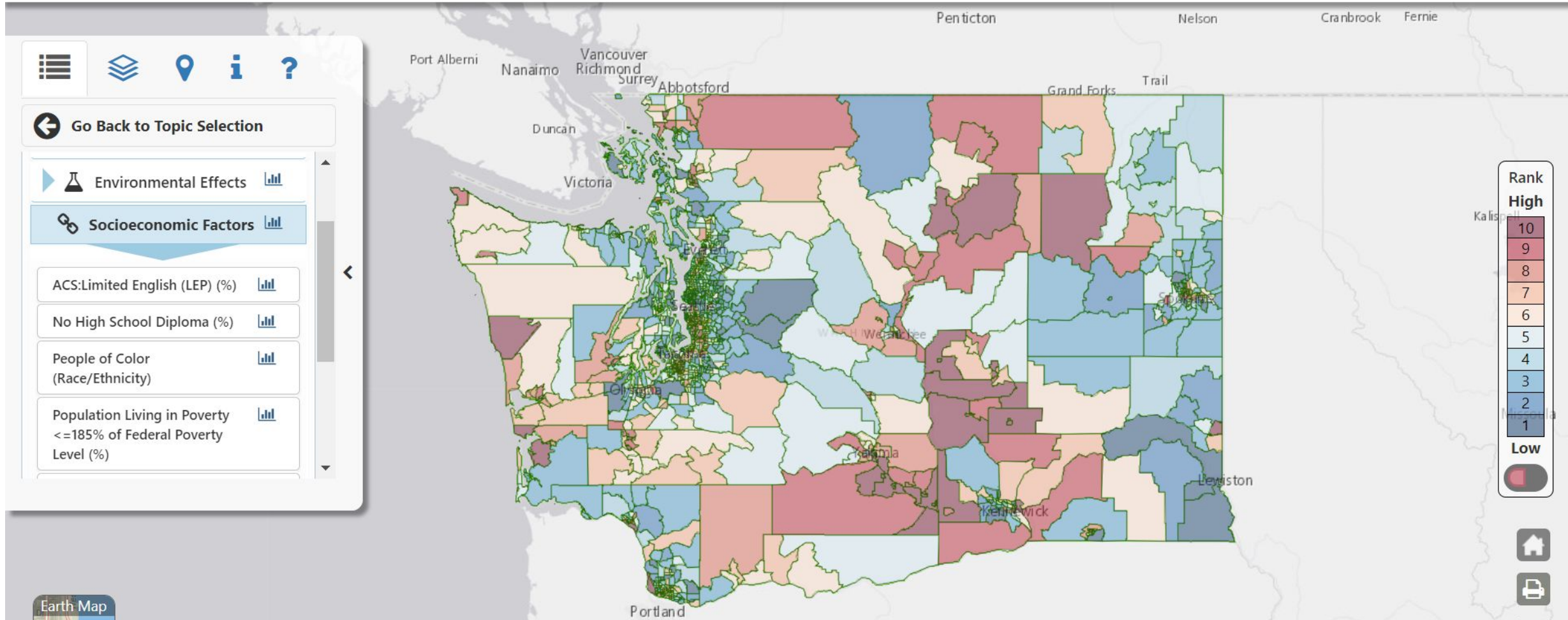
Environmental Health Disparities Topic

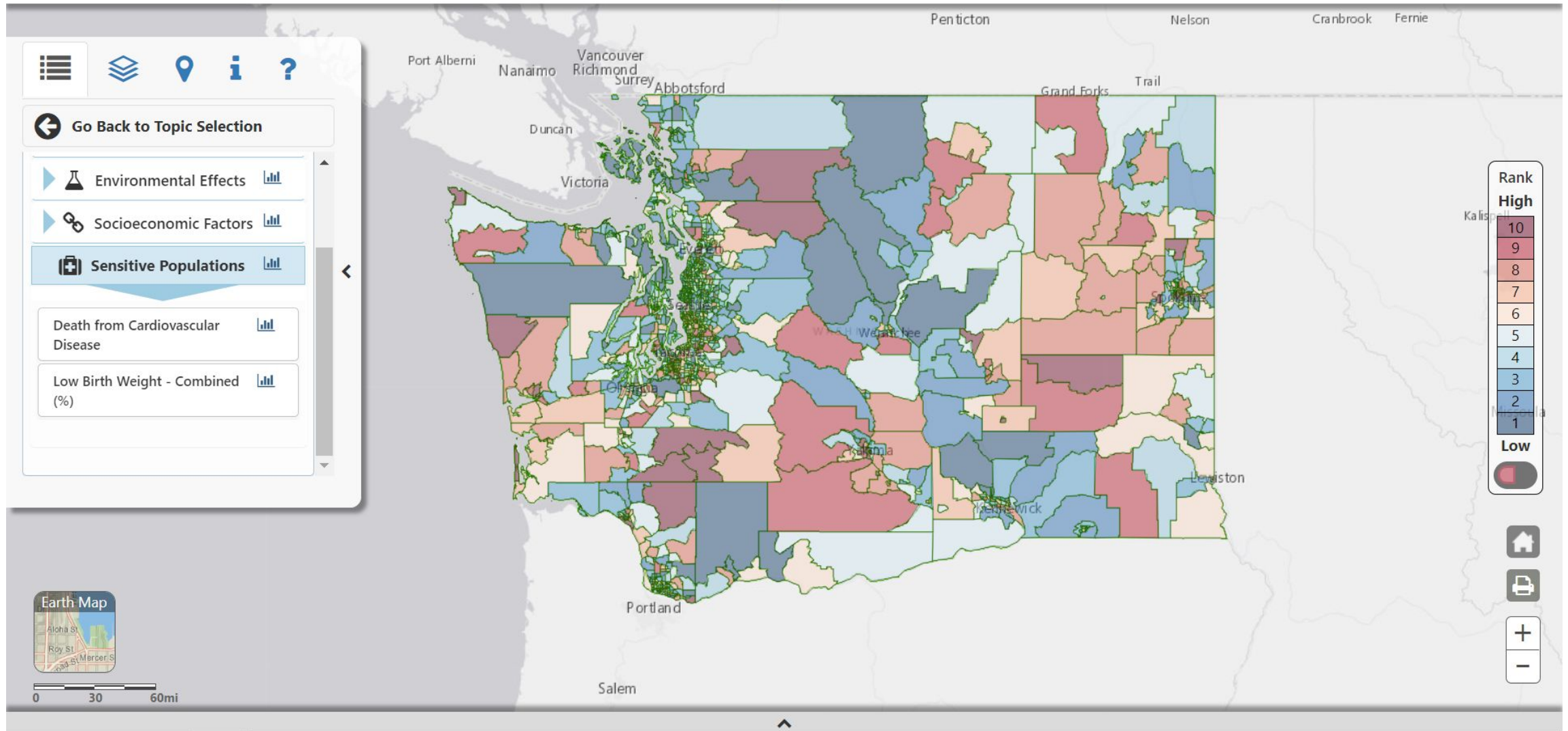
The screenshot shows a web browser window with the URL <https://fortress.wa.gov/doh/wtn/WTNIBL/>. The page header features the Washington State Department of Health logo and the text "Washington Tracking Network - A Source for Environmental Public Health Data". A breadcrumb trail reads: Home > Data and Statistical Reports > Environmental Health > Washington Tracking Network (WTN). The main content area displays a map of Washington state with city labels: Everett, Seattle, Tacoma, Olympia, Yakima, Kennewick, Lewiston, Spokane, Missoula, and Kalispell. On the left, a sidebar menu is open, showing three items: "Environmental Health Disparities" (selected), "Diesel Pollution and Disproportionate Impact", and "Social Vulnerability to". The footer contains three sections: "Contact Us" with a logo and links to "Contact WTN at 877-485-7316", "WTN Main Page", "Agency Contact", and "Let us know what you think about our site!"; "Notices" with links to "Privacy Notice" and "Copyright Statement"; and "Alternate Format Requests" with a note: "For people with disabilities, Web documents in other formats are available on request. To submit a request, please contact: Web Management Team."











OTHER INDICATORS

- Asthma
- Built environment indicators and tree canopy
- Climate change, health risk and vulnerability
- Drinking water contaminants
- Food access
- Marine water quality
- Noise pollution
- Occupational risk
- Pesticide exposure
- Proximity to state-specific cleanup sites
- Surface water quality
 - Biological vs chemical
- Wealth inequality

Policy Applications of the Washington Environmental Health Disparities Map

By Vanessa Galaviz, UW DEOHS and Deric Gruen, Front and Centered

with contributions from Debolina Banerjee, Puget Sound Sage



January 9, 2019

Table of Contents

KEY POINTS	2
BACKGROUND	3
POLICY IMPLICATIONS	3
APPLICATIONS AND EXAMPLES	4
<i>Designating Disadvantaged Communities</i>	4
<i>Resource & Funding Prioritization</i>	4
<i>Jobs & Hiring Prioritization</i>	5
<i>Enforcement and Inspection Prioritization</i>	5
<i>Land-use Planning & Permitting</i>	5
<i>Public Participation & Local Accountability</i>	6
PRECEDENT IN WASHINGTON	6
CONCLUSION	7
REFERENCES	7

Key Points

- In Washington, state and local agencies are starting to use environmental impacts mapping for investments, policies, and program decisions.
- The new Washington Environmental Health Disparities Map is a science-based tool that combines data on pollution and vulnerability to pollution to compare the cumulative impacts for Washington communities statewide.
- The Map has many applications, including designating communities with cumulative impacts, prioritizing resources, hiring, and enforcement; and improving land use regulation, public participation and accountability, and data accuracy.
- States like California have used a similar cumulative impacts map to prioritize billions of dollars in environmental investments and to improve the effectiveness of their policies.

Contact us:

deric@frontandcentered.org

estmin@uw.edu

envmap@uw.edu

Doh.wtn@doh.wa.gov

coordinators@frontandcentered.org

Access the mapping tool: <https://fortress.wa.gov/doh/wtn/WTNIBL/>

UW project website: deohs.washington.edu/washington-state-envmap

Front and Centered project website: frontandcentered.org/ej-map/