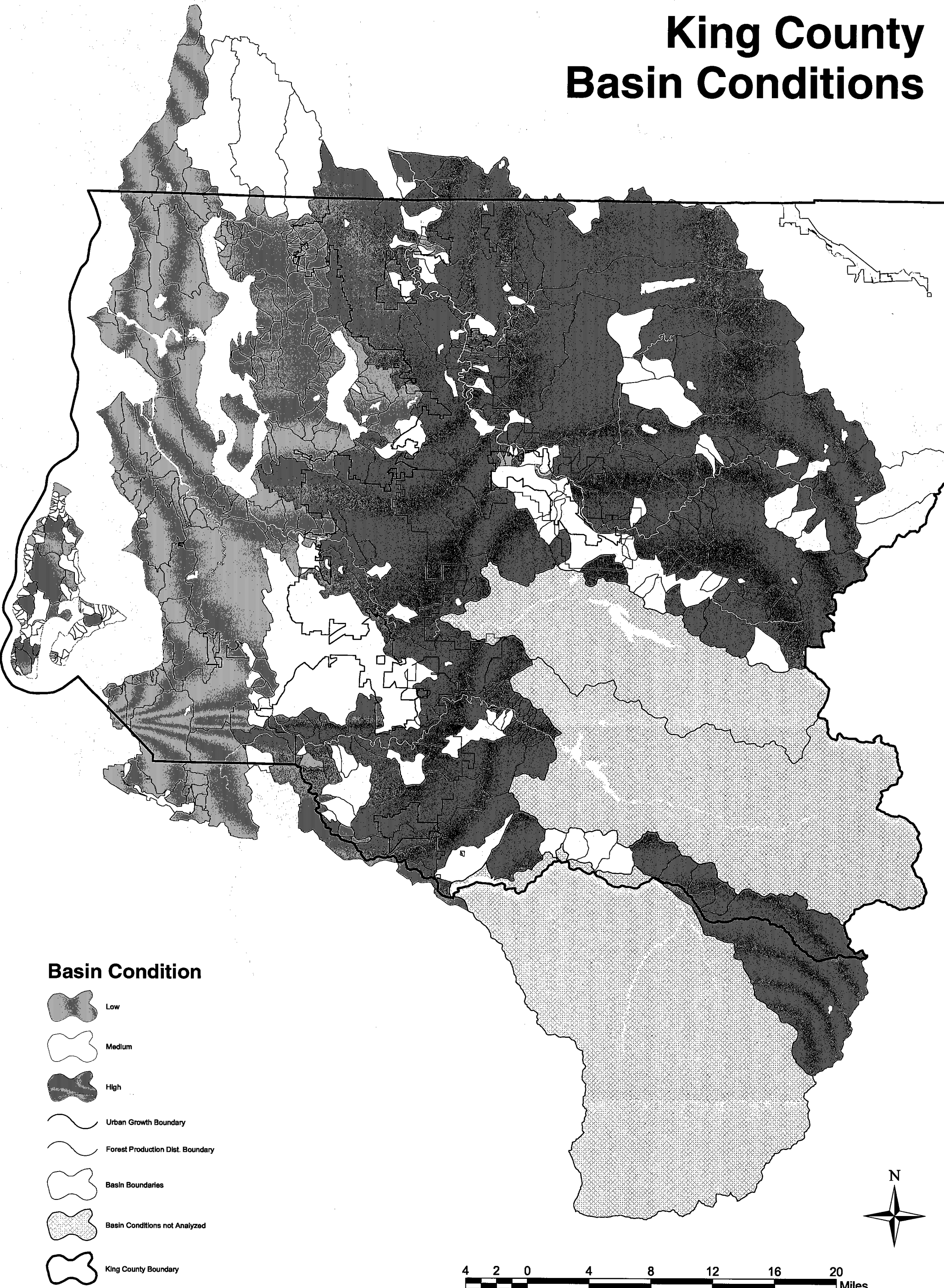
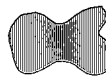




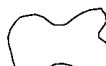




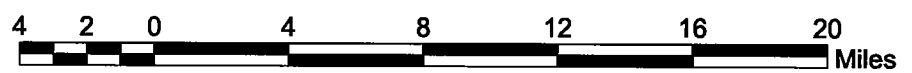
# King County Basin Conditions



## Basin Condition

-  Low
-  Medium
-  High
-  Urban Growth Boundary
-  Forest Production Dist. Boundary
-  Basin Boundaries
-  Basin Conditions not Analyzed
-  King County Boundary

Water Bodies



Attachment A **2004-122**

The information included on this map has been compiled by King County staff from a variety of sources and is subject to change without notice. King County makes no representations or warranties, express or implied, as to accuracy, completeness, timeliness, or rights to the use of such information. King County shall not be liable for any general, special, indirect, incidental, or consequential damages including, but not limited to, lost revenues or lost profits resulting from the use or misuse of the information contained on this map. Any sale of this map or information on this map is prohibited except by written permission of King County.



**King County**

Department of Development and Environmental Services  
 m:\paul\ArcMap\20040218\_CAO\_Analysis\_Basin\_Condition.mxd  
 AWC \ddes707\gis-m\mapa\20040218\_CAO\_Analysis\_Basin\_Condition.pdf