

MIDD 2022
Summary Report
Health and Human
Services Committee
May 7, 2024



MIDD 2 Policy Goals

- 1** **Divert** individuals with behavioral health needs from costly interventions, such as jail, emergency rooms and hospitals.
- 2** **Reduce** the number, length, and frequency of behavioral health crisis events.
- 3** **Increase** culturally appropriate, trauma-informed behavioral health services.
- 4** **Improve** health and wellness of individuals living with behavioral health conditions.
- 5** Explicit **linkage** with, and **furthering** the work of, King County and community initiatives.



52 Initiatives Across Five Strategy Areas

- Prevention and Early Intervention
- Crisis Diversion
- Recovery and Reentry
- Systems Improvement
- Therapeutic Courts

80%

crisis service episodes among adults,
over the long term.



36%

emergency department admissions,
over the long term.



71%

jail bookings among adults, over the
long term.



34%

**psychiatric inpatient admissions
by program participants,** over the
long term.



91%

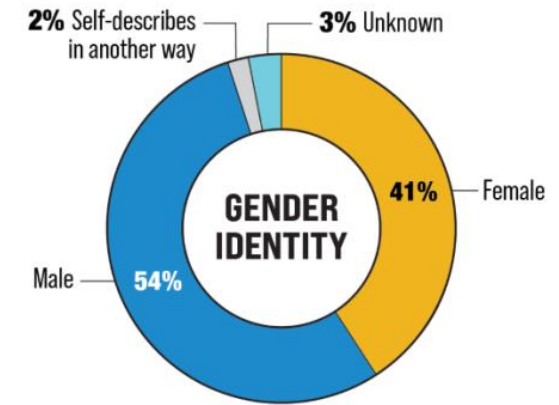
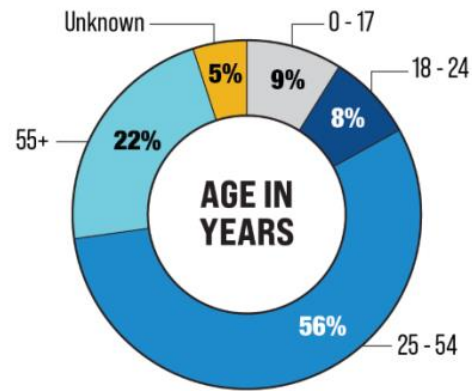
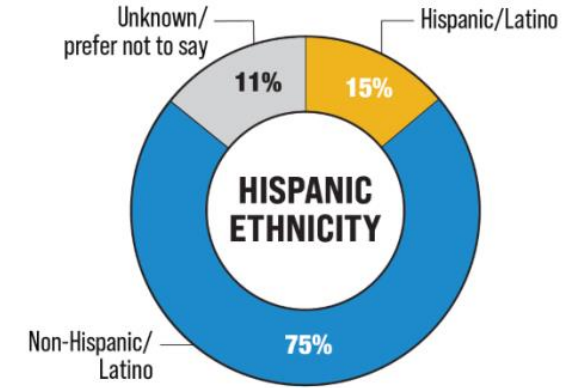
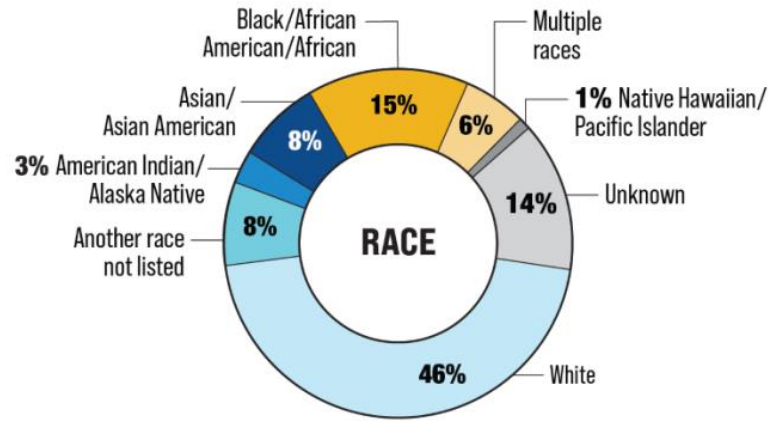
percent of **youth** with **no new
additional crisis service episodes.**



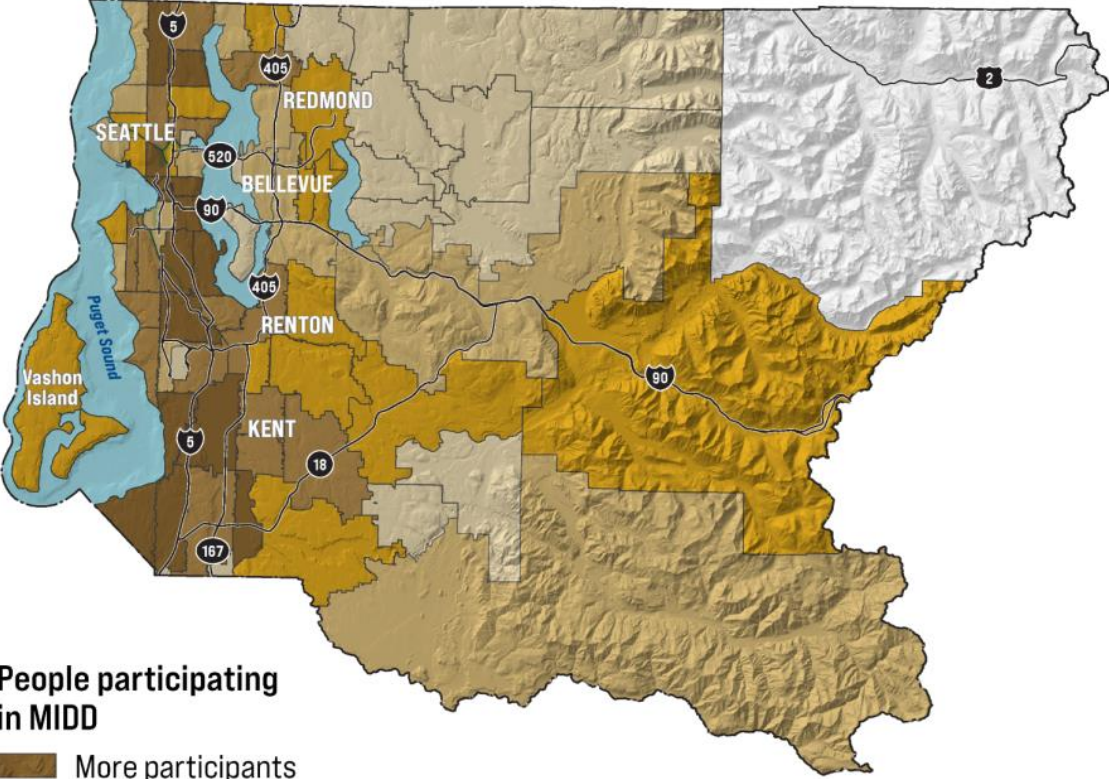
2022 Key Accomplishments

Who MIDD served in 2022

Total Served:
19,281

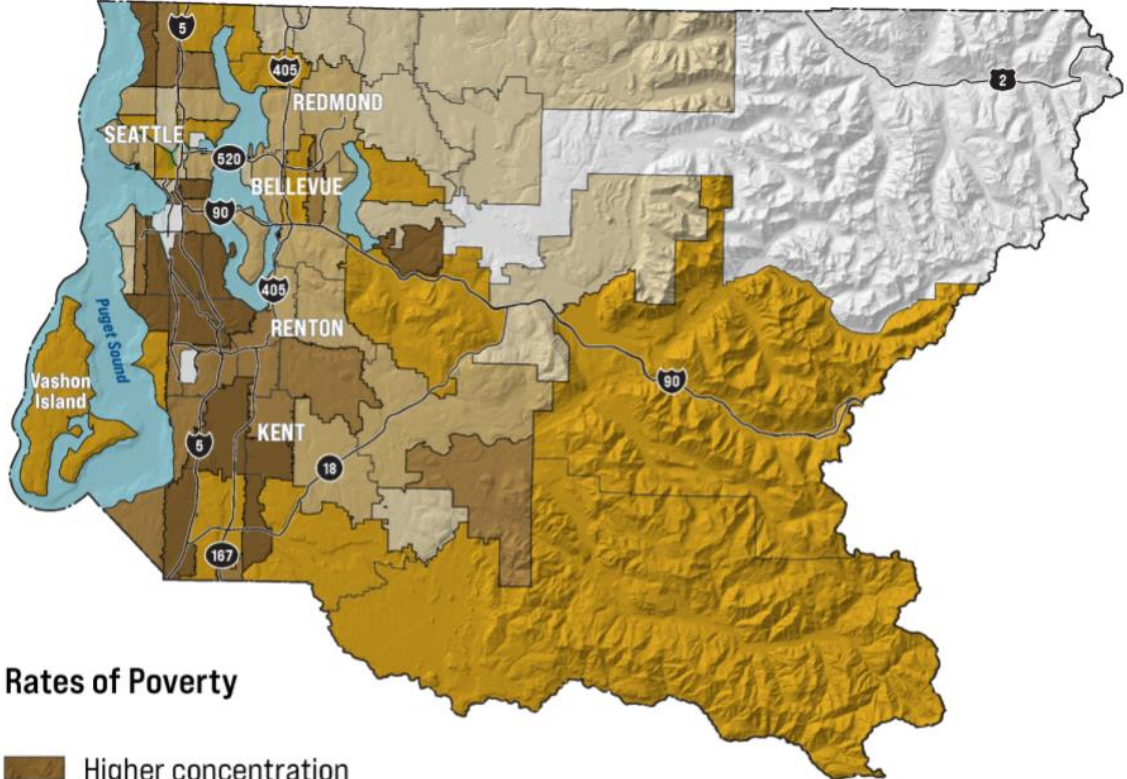


Where MIDD Participants Live



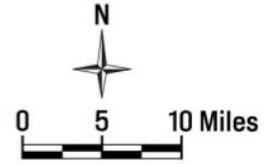
People participating in MIDD

- More participants
- Fewer participants
- Data not available



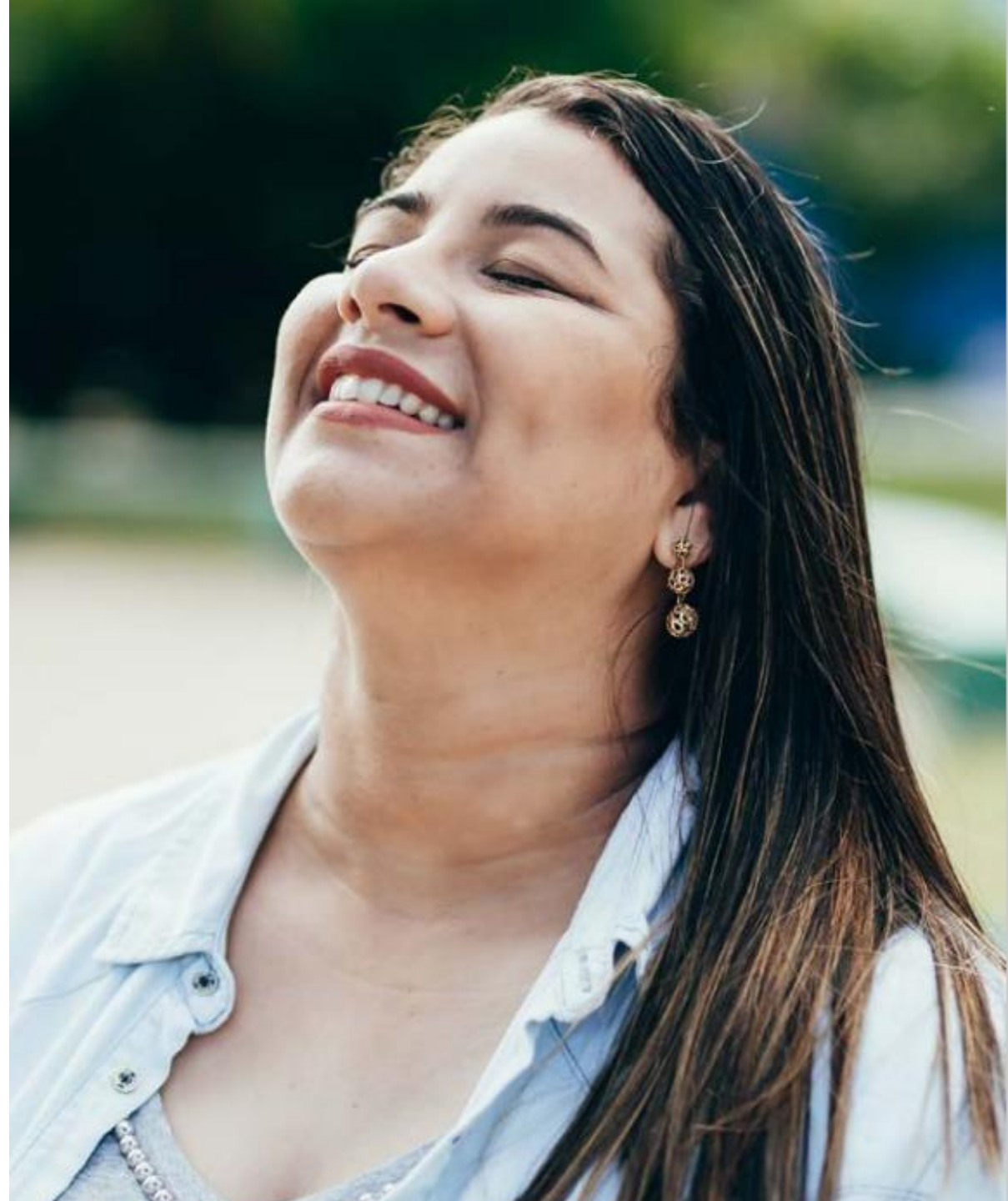
Rates of Poverty

- Higher concentration
- Lower concentration
- Data not available



2022 Themes

- Meeting People Where They Are
- Behavioral Health Workers and Providers Faced Systemic Challenges
- Investing in Youth Mental Health and Preventing Crisis
- Peers make a difference
- Housing leads to increased stability



Meeting People Where They Are

Over 4,800 people were engaged by MIDD-funded outreach programs, including Law Enforcement Assisted Diversion (LEAD), mobile crisis teams, or Medication for Opioid Used Disorder (MOUD) in shelters and encampments.

Adult crisis service episodes **decreased** between

70%
and
89%

(depending on
the program)
over the long-term.



Adult jail bookings **decreased** between

60%
and
84%

(depending on
the program)
over the long-term.



Emergency department visits **decreased** between

39%
and
52%

(depending on
the program)
over the long-term.



Psychiatric inpatient hospitalizations **decreased** over

45%

over the
long-term among
participants engaged
by MIDD-funded
mobile crisis teams.



Behavioral Health Workforce and Providers Faced Systemic Challenges

Across the spectrum from prevention to crisis intervention, the **two most widespread challenges** MIDD providers faced in 2022 were:



1 A workforce strained under the magnitude of the need without the wages or supports to help sustain and retain workers.



2 Growing demand for services and higher acuity of need.

Community-based providers facilitate and support recovery and stability for King County residents, yet chronic underinvestment in the behavioral health system creates and perpetuates structural challenges. MIDD supported providers with a seven percent economic adjustment in 2022, and MIDD System Improvement strategies provided additional funding to enable providers to outreach and engage vulnerable and hard-to-reach clients.

Investing in Youth Mental Health and Preventing Crises



10,000 youth were screened in schools using the **School-Based Screening, Brief Intervention, and Referral to Treatment (School-Based SBIRT)** tool. When the screening identified an immediate safety concern, **81% of high school youth and 91% of middle school youth received a brief intervention.**



Over **90%** of the youth served by both the **Children's Crisis Outreach and Response System** and **Wraparound Services for Youth** had **no new crisis events** in the 12 months following their engagement in either program.



88% of youth involved in the criminal-legal system and served by **Family Intervention and Restorative Services** had **no new juvenile criminal charges filed** in the 12 months following their engagement in the program. Youth engaged with **Juvenile Justice Youth Behavioral Health Assessments** had similar success, with **73% having no new juvenile criminal charges.**

2022 Financial Report

STRATEGY AREA	2022 Budget	2022 Actuals	Percent Spent
Prevention and Early Intervention	21,111,634	16,815,785	80%
Crisis Diversion	27,234,186	22,690,048	83% ¹⁰
Recovery and Reentry	9,500,339	9,873,378	104% ¹¹
System Improvement	7,968,892	2,109,644	26% ¹²
Therapeutic Courts	12,944,554	11,571,518	89%
Special Projects	10,200,000	9,797,544	96%
Administration and Evaluation	4,705,523	3,298,811	70%
Total	99,065,128	76,156,728	77%

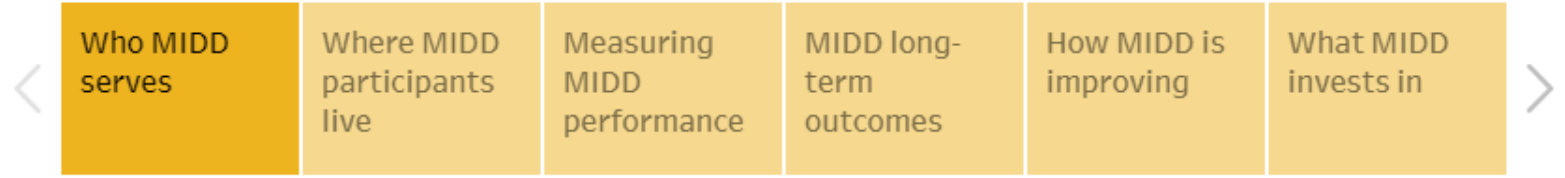
2022 Data Dashboard

To fully explore MIDD's overall results, visit the interactive MIDD Data Dashboard.

[MIDD Data Dashboard](#)

[2022 MIDD Data Dashboard](#)

2022 MIDD Data Dashboard



MIDD DEMOGRAPHICS

MIDD serves a diverse group of people.

MIDD strives to collect complete and accurate information on all participants, using self-reported data. MIDD serves a diverse group of people across King County, aiming to provide visibility to every person it serves. Demographic data alone provide an incomplete story of people served by MIDD. Please take care when interpreting these data as some people or communities may be reluctant to share personal information with providers and/or public entities as a result of systemic and structural racism.

NAVIGATION: Use the Strategy dropdown menu to view results for specific MIDD strategies, and hover over the strategy name for a description. Use the tabs below to filter by MIDD strategy area. To reset a filter, double click on the Strategy Area tab. Filter by demographic category with the dropdown menus below. Multiple categories can be chosen at the same time. To reset a filter, click the filter icon with a red 'x' above the dropdown menu. Hover over results and labels for more details.

Crisis Diversion	Prevention and Early Intervention	Recovery and Reentry	System Improvement	Therapeutic Courts
Strategy (All) ▼				
Gender Identity (All) ▼		Race (All) ▼		
Age Group (All) ▼		Ethnicity (All) ▼		

Questions?

Susan McLaughlin

Division Director

smclaugh@kingcounty.gov

Robin Pfohman

MIDD Coordinator

Robin.Pfohman@kingcounty.gov