

# 2024-2029 Strategic Plan: Update

King County Board of Health  
April 18, 2024

Eva Wong, Strategic Planning Manager

Matias Valenzuela, Director, Office of Equity and Community Partnerships

Jessica Jeavons, Director, Policy and Strategy

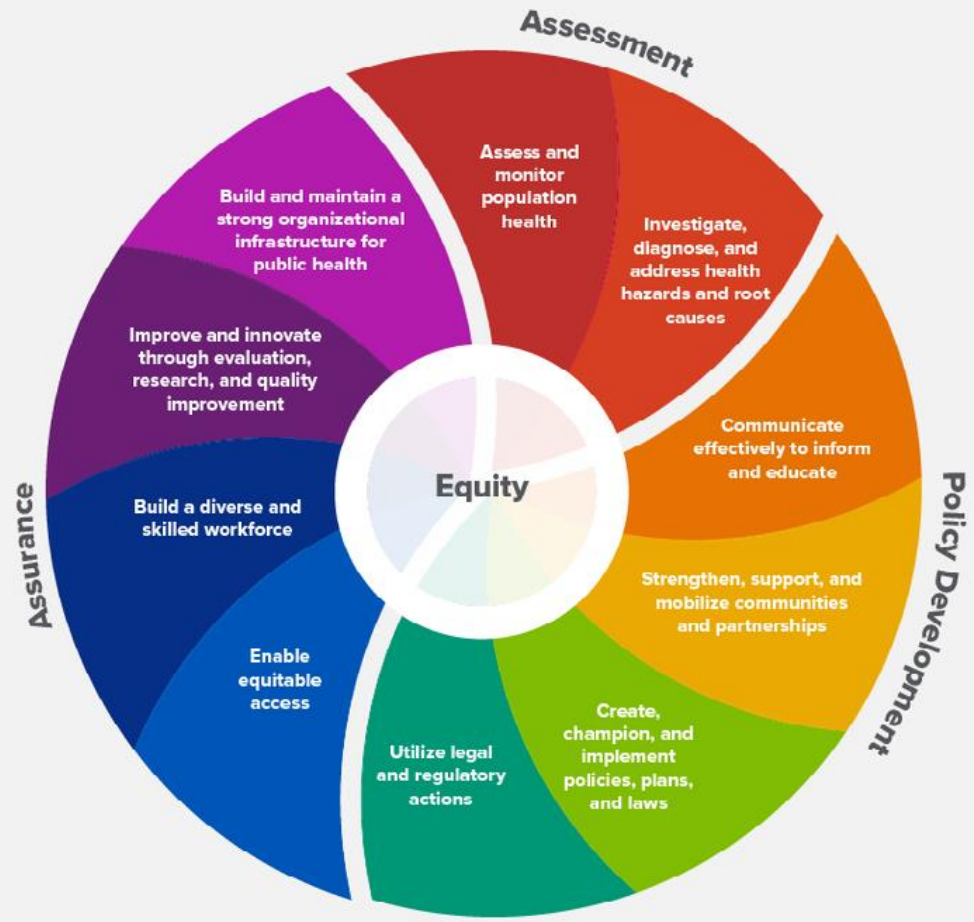
# Why Now?

A close-up photograph of a person's hands holding a white protest sign. The sign features the word 'RACISM' in large, red, hand-painted letters on a yellow rectangular background. To the right of this, the words 'IS A' are written in black, with the 'I' underlined. Below this, the words 'PUBLIC HEALTH' are written in large, black, hand-painted letters. At the bottom of the sign, the word 'CRISIS' is written in large, red, hand-painted letters. The background is slightly blurred, showing what appears to be a building facade.

**RACISM** IS A  
**PUBLIC HEALTH**  
**CRISIS**

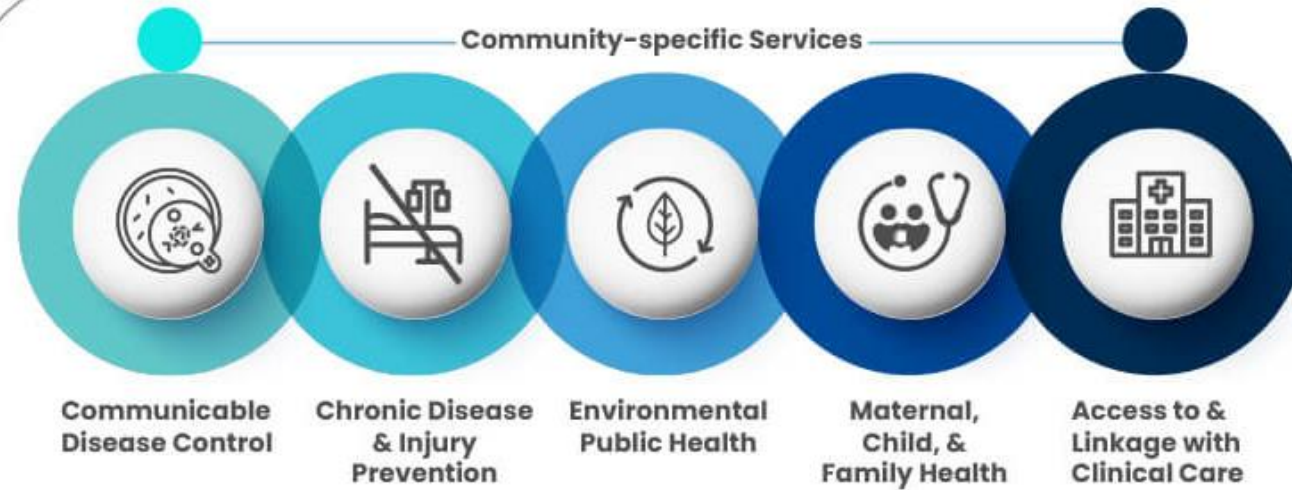
Declaration by the Board of Health, Resolution 20-08, on June 18, 2020 and King County government and Public Health – Seattle & King County, on June 11, 2020

# THE 10 ESSENTIAL PUBLIC HEALTH SERVICES



# Foundational Public Health Services

**Foundational Areas**



**Foundational Capabilities**

<b>Assessment &amp; Surveillance</b>	<b>Community Partnership Development</b>	<b>Equity</b>	<b>Organizational Competencies</b>
<b>Policy Development &amp; Support</b>	<b>Accountability &amp; Performance Management</b>	<b>Emergency Preparedness &amp; Response</b>	<b>Communications</b>

EQUITY



# Public Health 3.0



# 2024-2029 Strategic Plan

- We are finalizing Public Health's first strategic plan in over 15 years
- Thank you to the hundreds of staff and hundreds of community partners who provided input and feedback that guided this strategic plan
- Equity, social justice, and the declaration that Racism Is a Public Health crisis are integrated at every step of development



# Strategic Planning Timeline

Spring  
2023

- Analyze current operations

Summer  
/Autumn  
2023

- Engaged:
- 36 staff sessions
  - 35 partner sessions
  - 93 surveys
  - ~100 partner organizations

Autumn  
2023 /  
Winter  
2024

- Final engagement report informs strategic plan
- Co-create strategic plan

Coming  
Soon

- Final strategic plan

# Board of Health Engagement

- Regular updates to the Board via Director's report
- March 16, 2023: Briefed the Board on upcoming strategic planning
- August 2, 2023: Focus group for Boardmembers that volunteered to participate
- August 17, 2023: Key informant interview with Board chair
- October 19, 2023: Briefed the Board on engagement results





# Enhance Relationships with BIPOC Communities and Organizations

*"I see how it [building relationships with BIPOC communities] has shifted from a nice thing to do to a must do... that's a good thing"*

-PHSKC staff member

*MAJOR FORCES*

- Greater expectation of PHSKC to build and maintain robust relationships with BIPOC communities and organizations.
- Increased exposure to the rationales and benefits of healthy relationships with BIPOC communities and organizations.

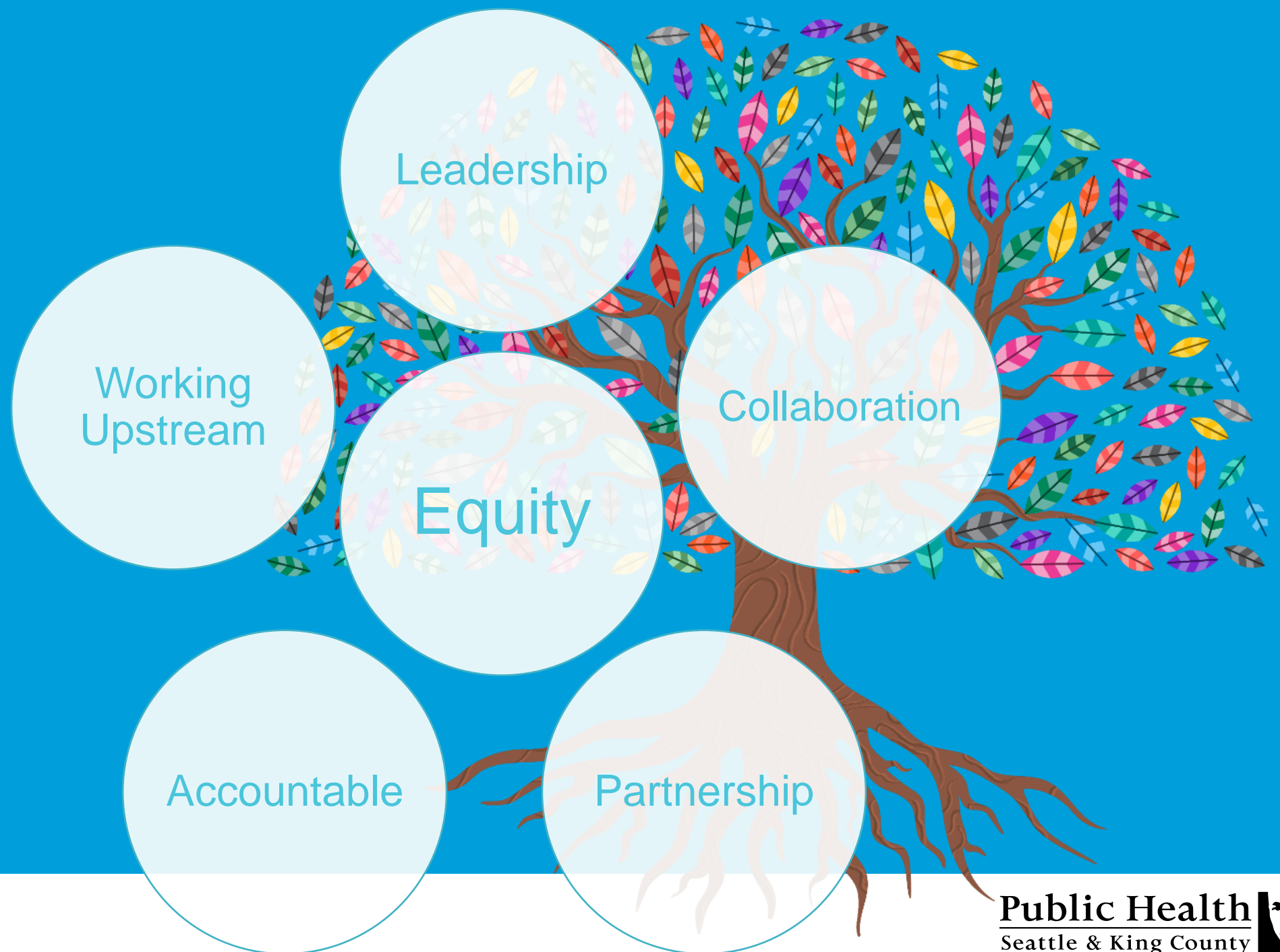
# Vision

Health, well-being, and racial equity – every day for everyone in King County.

# Mission

To promote and improve the health and well-being of all people in King County by leading with racial equity and changing systems and structures that impact health.

# Values



# 2024-2029 Public Health Strategic Plan

## Anti-racism + Equity

Information,  
Impact &  
Innovation

Workforce and  
Infrastructure

Partnerships

Climate and  
Health

Emerging Threats  
to Community  
Health & Well-  
being

# 2024-2029 Public Health Strategic Plan

## Anti-racism + Equity

Information,  
Impact &  
Innovation

Workforce and  
Infrastructure

Partnerships

Climate and  
Health

Emerging Threats  
to Community  
Health & Well-  
being



Data /  
Informatics

Policy  
Development

Health  
Communications

# 2024-2029 Public Health Strategic Plan

## Anti-racism + Equity

Information,  
Impact &  
Innovation

Workforce and  
Infrastructure

Partnerships

Climate and  
Health

Emerging Threats  
to Community  
Health & Well-  
being



Workforce &  
Workplace

Internal  
Collaboration

Emergency  
Preparedness



# 2024-2029 Public Health Strategic Plan

## Anti-racism + Equity

Information,  
Impact &  
Innovation

Workforce and  
Infrastructure

Partnerships

Climate and  
Health

Emerging Threats  
to Community  
Health & Well-  
being



Community  
Partnerships

Cross-sector  
Partnerships

# 2024-2029 Public Health Strategic Plan

## Anti-racism + Equity

Information,  
Impact &  
Innovation

Workforce and  
Infrastructure

Partnerships

Climate and  
Health

Emerging Threats  
to Community  
Health & Well-  
being

# 2024-2029 Public Health Strategic Plan

## Anti-racism + Equity

Information,  
Impact &  
Innovation

Workforce and  
Infrastructure

Partnerships

Climate and  
Health

Emerging Threats  
to Community  
Health & Well-  
being



Health of People  
Experiencing  
Homelessness

Gun Violence  
Prevention

Overdose  
Prevention

Community Well-  
being & Youth  
Behavioral Health



# Resources and Information

- Public Health's Strategic Planning [web page](https://kingcounty.gov/en/dept/dph/about-king-county/about-public-health/strategic-planning)
  - <https://kingcounty.gov/en/dept/dph/about-king-county/about-public-health/strategic-planning>
  - Current State Analysis Report (June 2023)
  - Engagement Report (November 2023)
  - 2024-2029 Strategic Plan (Coming Soon)