

## MGRC needs you!

Become a member so your voice can be heard. By adding your name to the list of members you can help us preserve key areas in the Middle Green River basin. Also you will help bring this incredible area to the attention of our elected officials and the larger community. Community is the key to maintaining quality of life, preserving open space, protecting wildlife, and maintaining outdoor recreation opportunities.

### Why Join?:

- To preserve the uplands and shorelines of the Green River gorge that will create opportunities for a network of trails for non-motorized recreation, and maintain wildlife corridors.
- Make sure that the springs that recharge the Green River continue to flow. This will help maintain instream flows for salmon and recreational boating.
- Protect key access areas for fishermen.
- Preserve key areas in local communities along streams and wetlands.
- Develop a coalition of organizations, individuals, and government to be more effective at preserving the Middle Green River Basin.
- Create a cohesive voice for our communities to maintain our quality of life and wild places.

### Join Today!

- \$15 Individual
- \$30 Organization
- \$100 Lifetime membership
- \$150 Corporate
- \$150 Government
- \$ \_\_\_\_\_ Donations

- Yes I would like more information on MGRC.
- I am interested in volunteering.
- List skills you would like to volunteer:

\_\_\_\_\_  
\_\_\_\_\_  
Name: \_\_\_\_\_  
E-mail: \_\_\_\_\_  
Address: \_\_\_\_\_

- Yes I'd like the e-mail Update

Recreational Activities I am interested in:

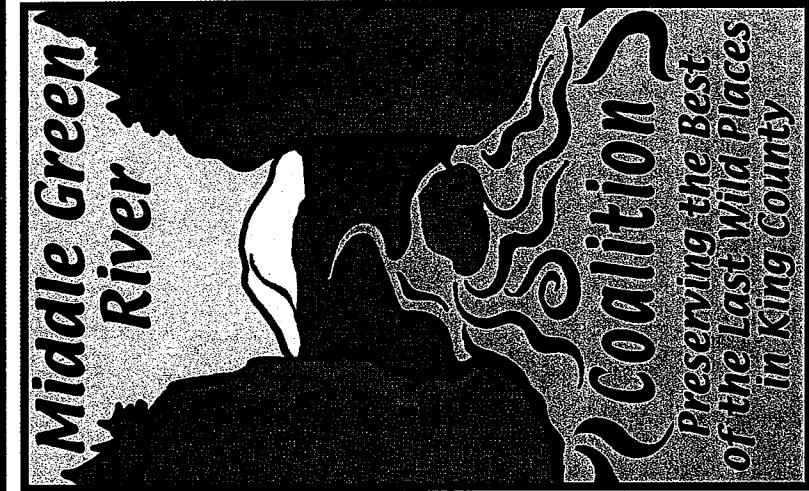
- \_\_\_\_\_  
\_\_\_\_\_  
I would like additional info and contact for:
- Green River Gorge Mountains to Valley Greenway
  - Friends of Cedar Creek Park
  - Friends of Soos Creek
  - Friends of the Green
  - Midsound Fisheries

Please make checks payable to MGRC and send to:

MGRC  
718 Griffin Ave, PMB #269  
Enumclaw WA, 98022



718 Griffin Ave. PMB #269  
Enumclaw Wa. 98022



## MGRC's Mission

Protecting and enhancing open space in the Middle Green River watershed to insure long-term habitat health and passive recreation opportunities.

We do this by:

- Acquiring land and conservation easements and using other conservation tools.
- Working with willing landowners and other partners.
- Informing and engaging a broad range of people and the community.
- Promoting environmentally sustainable forest production.

Visit our website at:

**[www.mgrc.org](http://www.mgrc.org)**

# MGRC members work on projects in the entire Middle Green Basin



River rafting on the Green River  
© 2003 Thomas O'Keefe

## Imagine.....

- Cool clear green pools.
- Waterfalls cascading down sandstone cliffs.
- Some of the best Class II, IV whitewater in the State.
- Fly fishing in your secret fishing location.
- Hiking and horseback riding on a trail with breathtaking views, and an abundance of wildlife.
- Epic destination mt. biking.
- A green oasis in your own neighborhood where you can recreate, learn about the environment, and escape the pressures of urban living.

## The Middle Green River basin has it all.

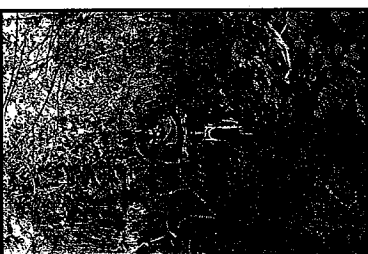
But unless you get involved we may lose this incredible opportunity to protect the Middle Green and its tributaries. Along with the discovery of such beautiful places comes the pressure of development resulting in loss of open space, and rural character.

MGRC is a group made up of a larger coalition of people, community and regional organizations, recreationists, private land owners, government, and others whose goal it is to protect the Middle Green River and its tributaries. By identifying and preserving key natural areas we ensure the protection of wildlife and fish habitat.

MGRC is also enthusiastic about outdoor recreation and supports outings such as mt. biking, hikes, horseback riding, river rafting, white water kayaking, environmental education, and fishing. Recreationists are key to the future of the conservation movement. To find out more about MGRC's mission and outings contact: MGRC at 360-802-4618 or MGRC@mgrc.org



Icy Creek



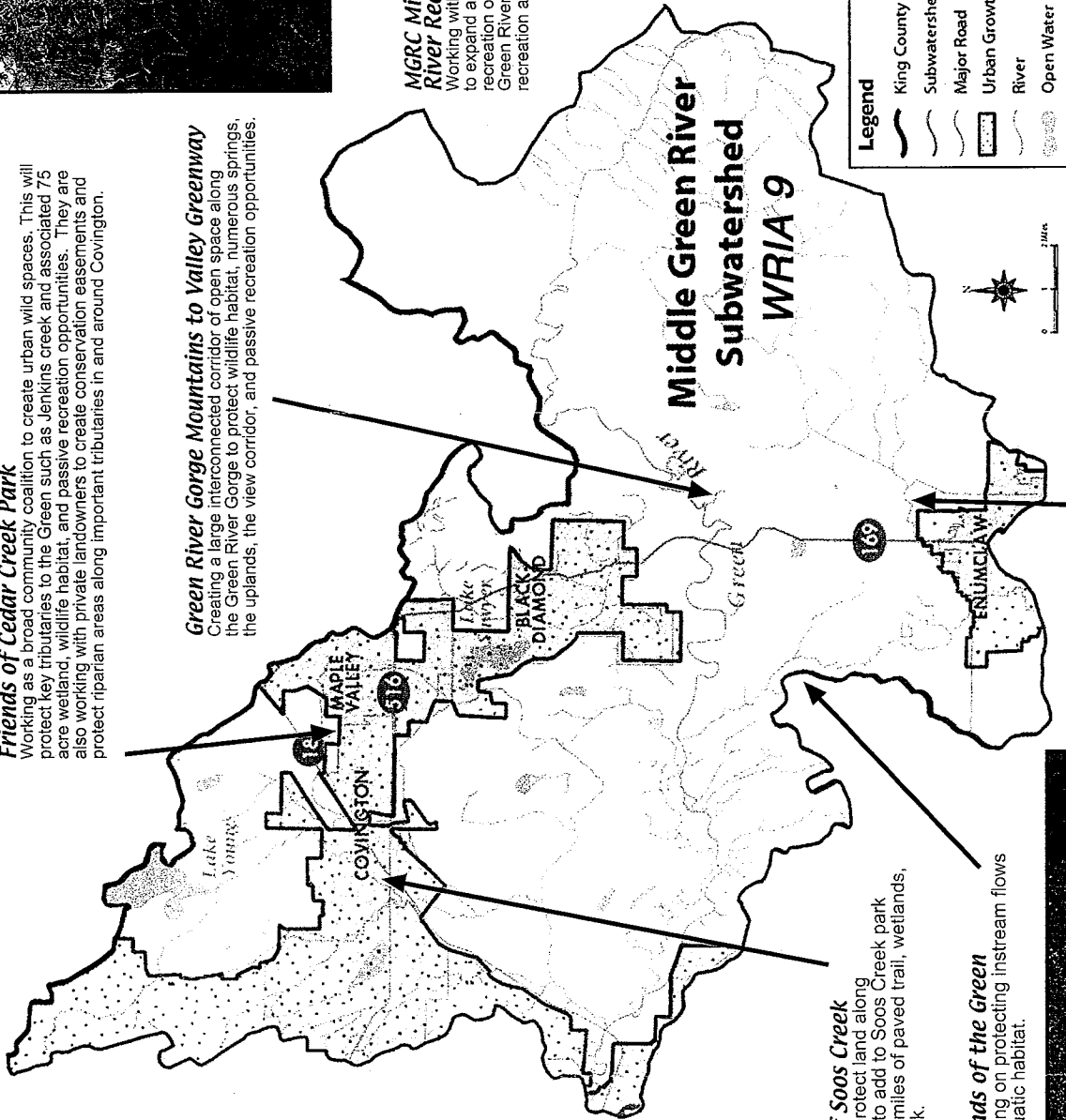
Mt. Biker at Lake Sawyer

## MGRC Middle Green River Recreation

Working with recreation groups to expand and protect passive recreation opportunities in the Green River Gorge and other recreation areas in watershed.

**Friends of Cedar Creek Park**  
Working as a broad community coalition to create urban wild spaces. This will protect key tributaries to the Green such as Jenkins creek and associated 75 acre wetland, wildlife habitat, and passive recreation opportunities. They are also working with private landowners to create conservation easements and protect riparian areas along important tributaries in and around Covington.

**Green River Gorge Mountains to Valley Greenway**  
Creating a large interconnected corridor of open space along the Green River Gorge to protect wildlife habitat, numerous springs, the uplands, the view corridor, and passive recreation opportunities.



**Friends of Soos Creek**  
Working to protect land along Soos Creek to add to Soos Creek park which has 4 miles of paved trail, wetlands, and the creek.

**Friends of the Green**  
Working on protecting instream flows in aquatic habitat.

**Mid Sound Fisheries Enhancement Group**  
is working with local government, private land owners, and the local community to improve and restore water quality and habitat on Newaukum Creek.

**SPLASH: The Water Quality Education Fund**

The printing of this brochure was made possible through SPLASH, the Water Quality Education fund awarded by the King County Department of Natural Resources and Parks. Funding for this brochure does not constitute an endorsement of its content by King County government, its employees, and elected officials.