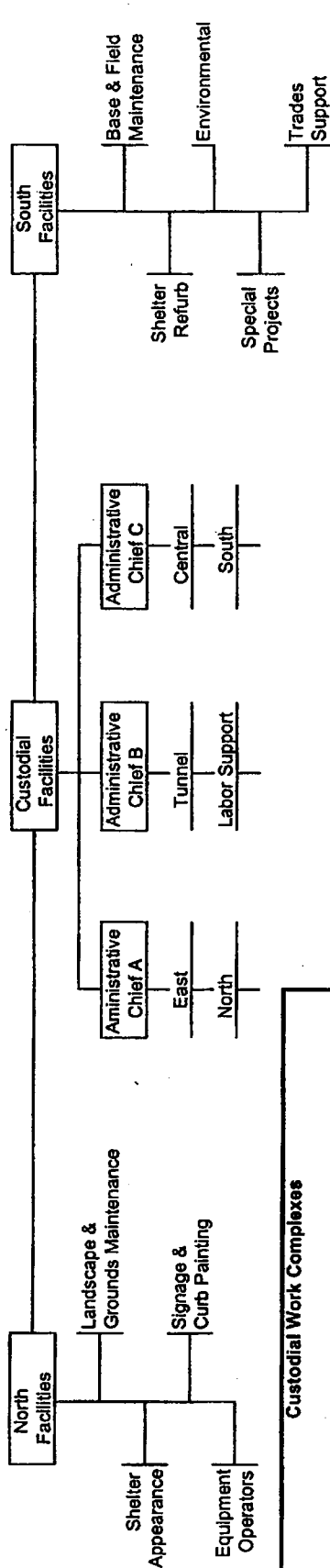


16126

EXHIBIT C - FACILITIES WORKSITE



- Custodial Work Complexes**
- East
 - East Base
 - Bellevue Base
 - Van Center
 - Central
 - Central & Atlantic Bases
 - Revenue Processing
 - Power Distribution
 - Ryerson Base
 - Marketing
 - WFSC
 - NRV
 - OCC
 - South
 - South Base
 - Safety/Training
 - South Facilities
 - Component Supply Ctr
 - Construction Trailer
 - North
 - North Base
 - Lake Union
 - SLUT
 - Tunnel
 - IDS
 - PSS
 - USS
 - WLS
 - CPS

Scheduled overtime will be assigned to Employees who have signed the "Overtime List" first by shift, then by seniority.

Non-Custodial Classifications:

- 1st - within the area of responsibility/pick position
- 2nd - within the work program (complex)
- 3rd - within the administrative headquarters
- 4th - system wide

Custodial Classifications:

- 1st - within area of responsibility/pick position
- 2nd - by the positions assigned to the specific building within the complex
- 3rd - by the positions assigned to the entire complex including crews.
- 4th - by positions assigned to the administrative chief
- 5th - system wide