

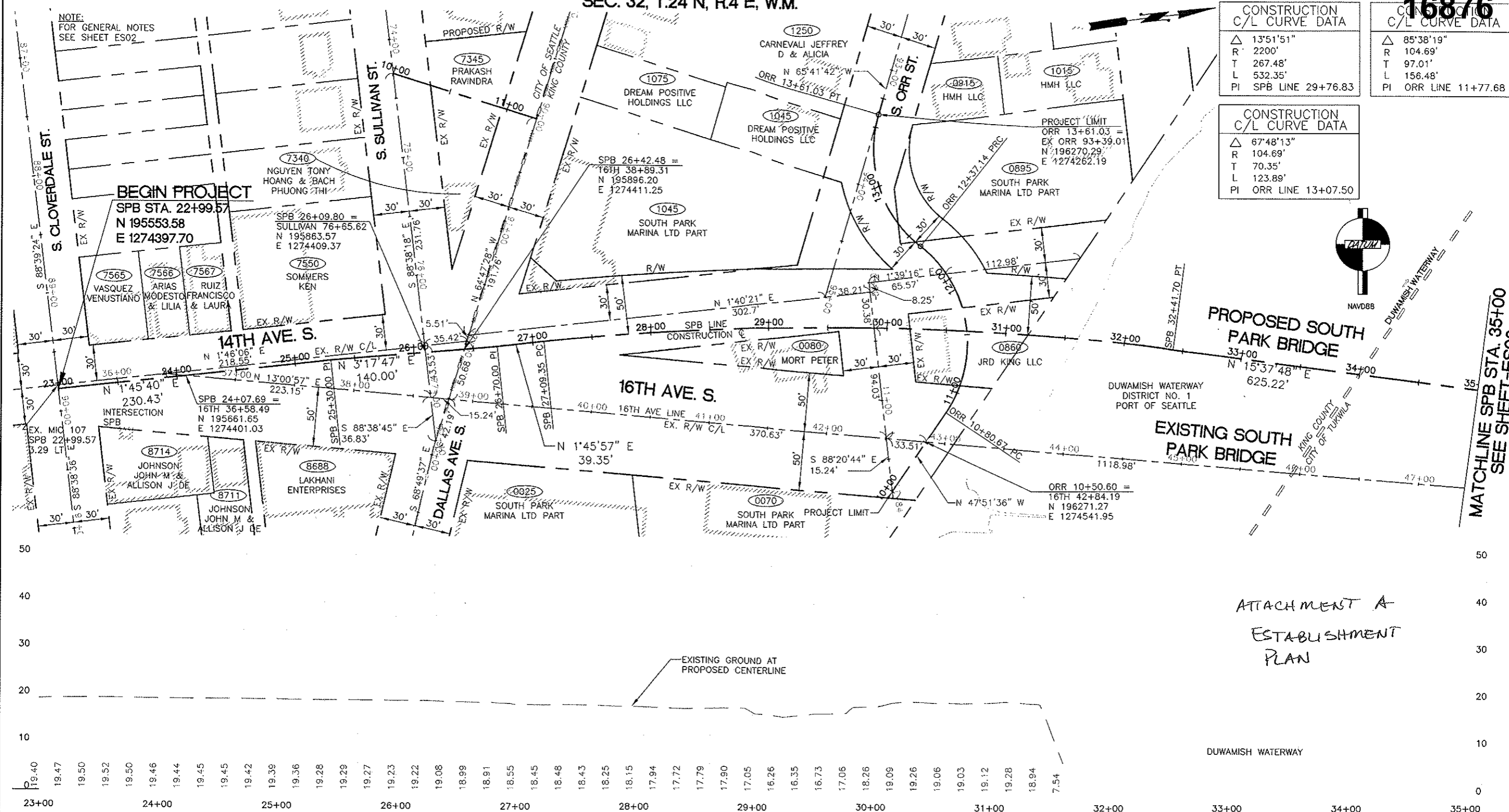
SEC. 32, T.24 N, R.4 E, W.M.

16876

CONSTRUCTION C/L CURVE DATA		CONSTRUCTION C/L CURVE DATA	
Δ	13°51'51"	Δ	85°38'19"
R	2200'	R	104.69'
T	267.48'	T	97.01'
L	532.35'	L	156.48'
PI	SPB LINE 29+76.83	PI	ORR LINE 11+77.68

CONSTRUCTION C/L CURVE DATA	
Δ	67°48'13"
R	104.69'
T	70.35'
L	123.89'
PI	ORR LINE 13+07.50



ATTACHMENT A  
ESTABLISHMENT  
PLAN

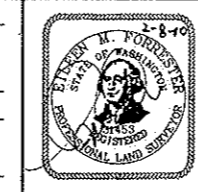


CALL 2 WORKING DAYS BEFORE YOU DIG  
1-800-424-5555  
(UNDERGROUND UTILITY LOCATIONS ARE APPROX.)

FIELD BOOK:	1622A	3/06-2/09
SURVEYED:	RIECKEN(KC)	2/09
SURVEY BASE MAP:	spork09.dwg	2/09
DESIGN ENTERED:	AD	9/09
DESIGNED:	MF	9/09
CHECKED:	EF	9/09
SUPERVISOR:	SN	9/09

NUM.	REVISION	BY	DATE

FED. AID No. \_\_\_\_\_  
PROJECT No. 300197  
SURVEY No. 32-24-4-22  
MAINTENANCE DIVISION No. 3



KING COUNTY DEPT. OF TRANSPORTATION  
HAROLD TANIGUCHI, DIRECTOR  
**SOUTH PARK BRIDGE #3179 REPLACEMENT**  
ESTABLISHMENT PLAN

ES01  
SHEET 1 OF 2 SHEETS  
316-63 ( )

**GENERAL NOTES**

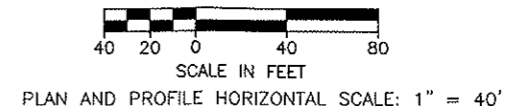
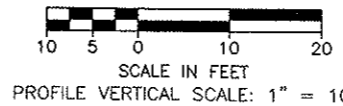
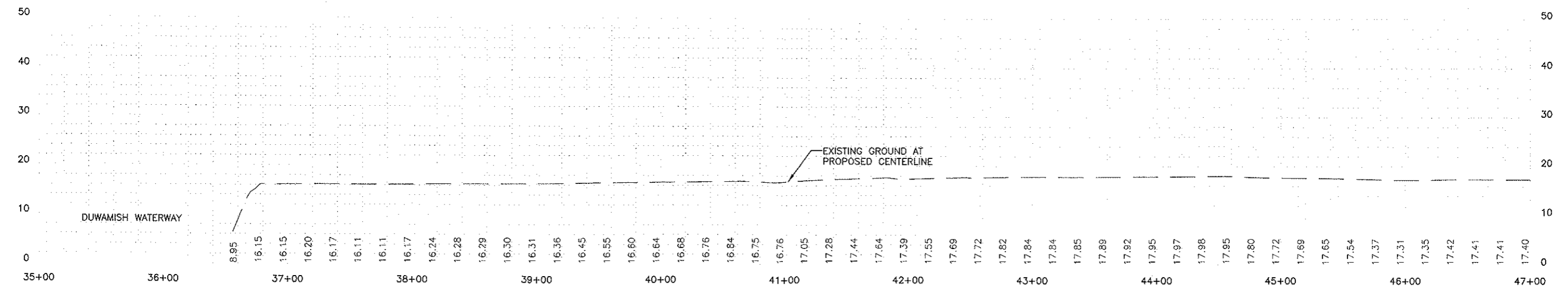
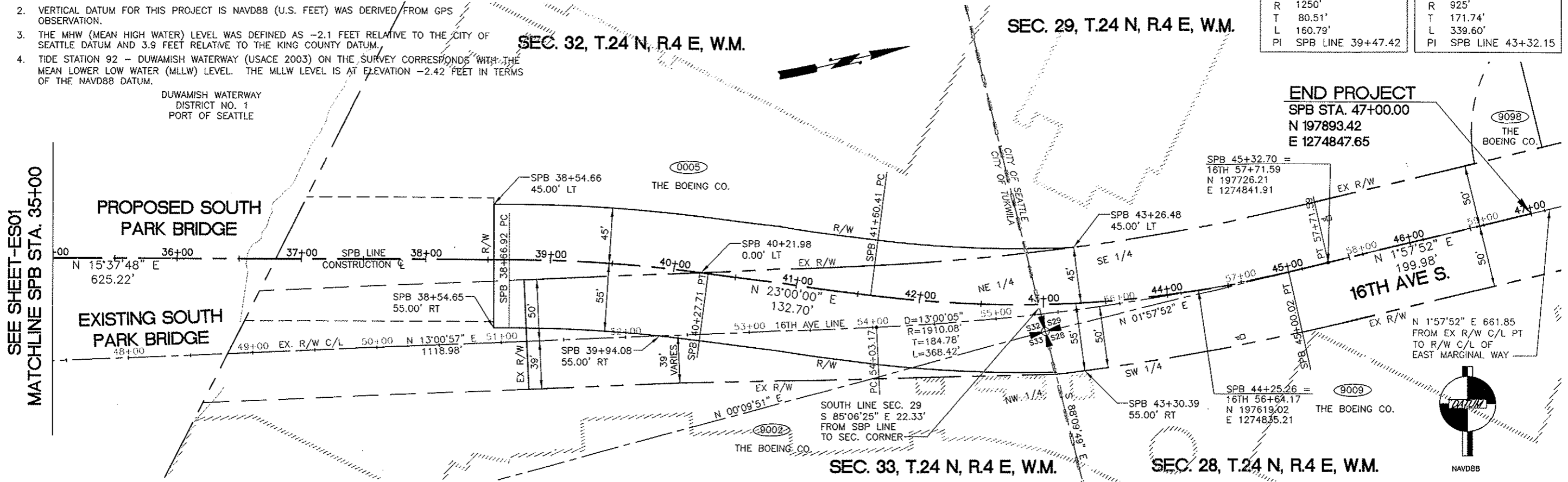
1. THE COORDINATES AND BASIS OF BEARINGS FOR THIS PROJECT ARE NAD83/91 (U.S. SURVEY FEET) BASED ON GPS VALUES AND KING COUNTY SURVEY CONTROL.
2. VERTICAL DATUM FOR THIS PROJECT IS NAVD88 (U.S. FEET) WAS DERIVED FROM GPS OBSERVATION.
3. THE MHW (MEAN HIGH WATER) LEVEL WAS DEFINED AS -2.1 FEET RELATIVE TO THE CITY OF SEATTLE DATUM AND 3.9 FEET RELATIVE TO THE KING COUNTY DATUM.
4. TIDE STATION 92 - DUWAMISH WATERWAY (USACE 2003) ON THE SURVEY CORRESPONDS WITH THE MEAN LOWER LOW WATER (MLLW) LEVEL. THE MLLW LEVEL IS AT ELEVATION -2.42 FEET IN TERMS OF THE NAVD88 DATUM.

DUWAMISH WATERWAY  
DISTRICT NO. 1  
PORT OF SEATTLE

CONSTRUCTION C/L CURVE DATA		CONSTRUCTION C/L CURVE DATA	
△	7'22"12"	△	21'02"08"
R	1250'	R	925'
T	80.51'	T	171.74'
L	160.79'	L	339.60'
PI	SPB LINE 39+47.42	PI	SPB LINE 43+32.15

**16876**

SEE SHEET-ES01  
MATCHLINE SPB STA. 35+00



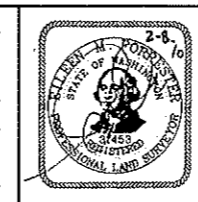
CALL 2 WORKING DAYS BEFORE YOU DIG  
1-800-424-5555  
(UNDERGROUND UTILITY LOCATIONS ARE APPROX.)

FIELD BOOK:	1622A	3/05-2/09
SURVEYED:	RIECKEN(KC)	2/09
SURVEY BASE MAP:	spark09.dwg	2/09
DESIGN ENTERED:	AD	9/09
DESIGNED:	MF	9/09
CHECKED:	EF	9/09
SUPERVISOR:	SN	9/09

NUM.	REVISION	BY	DATE

**HNTB**  
True  
NORTH  
LAND SURVEYING, INC.

FED. AID No. \_\_\_\_\_  
PROJECT No. 300197  
SURVEY No. 32-24-4-22  
MAINTENANCE DIVISION No. 3



KING COUNTY DEPT. OF TRANSPORTATION  
HAROLD TANIGUCHI, DIRECTOR  
**SOUTH PARK BRIDGE #3179 REPLACEMENT**  
ESTABLISHMENT PLAN

ES02  
SHEET 2 OF 2 SHEETS  
316-63 ( )