

KING COUNTY UPDATES

# VACCINE DELIVERY PLAN FOR OLDER ADULTS

Updated 1/21/21

# Older Adults NOW ELIGIBLE

---



## PHASE 1A

### Tier 1:

Long-term care facility residents and staff

### Tier 2:

All other workers at risk in healthcare settings including home care and home health

## PHASE 1B TIER 1

### Tier 1:

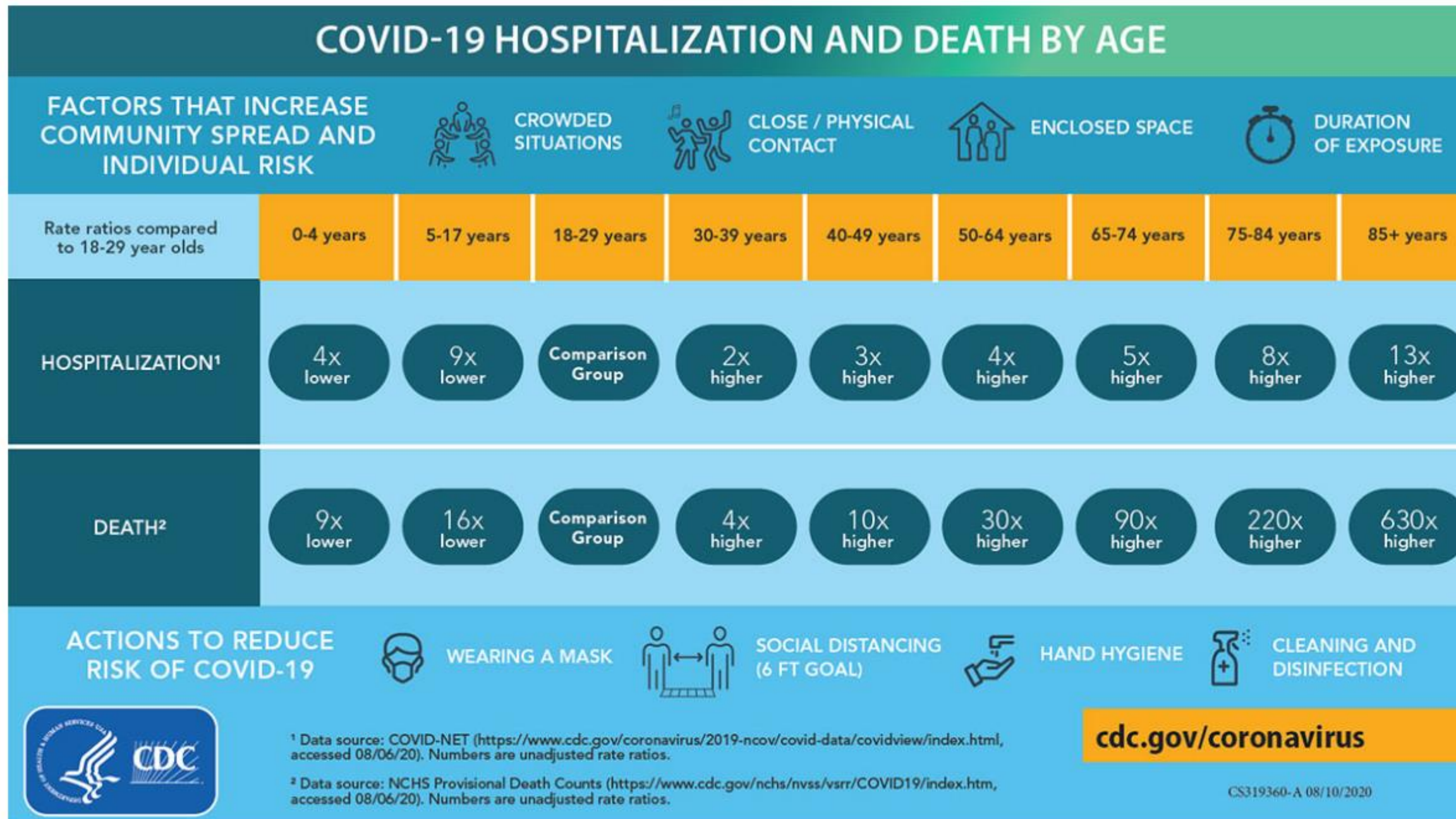
All people 65 years and older

People 50 years and older living in multigenerational households

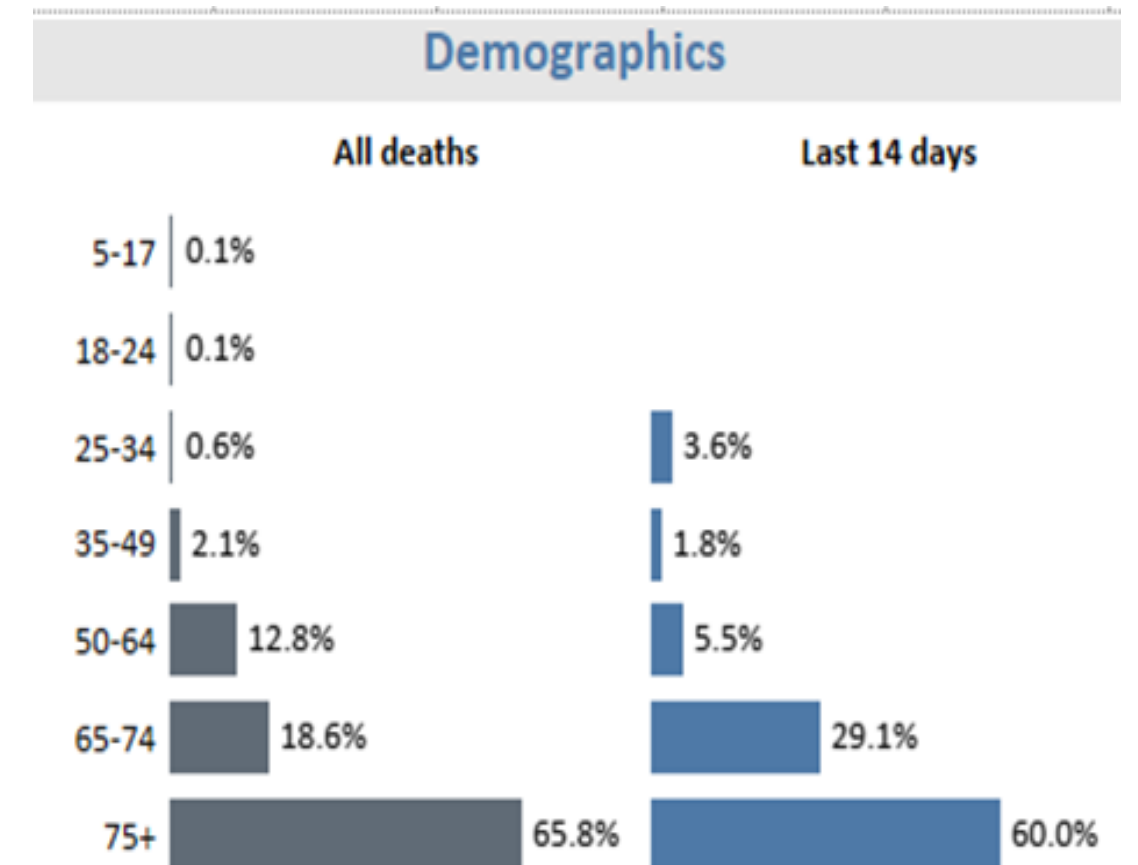


# OLDER ADULTS - COVID 19 RISK

Older Adults are at exponentially higher risk of serious illness and death compared to younger people.



In King County, 85 percent of all COVID Deaths have been among people age 65+



The median age (in years) of deaths is 81 of all deaths and 81 among deaths within the last 14 days.

# Doses Update

Week	WA State	King County Total	King County Dose 1
Week 1 12/14	62,400	17,550	17,550
Week 2 12/21	172,650	45,625	45,625
Week 3 12/28	101,621	18,225	18,225
Week 4 1/4	151,550	33,550	16,975
Week 5 1/11	124,250	26,425	11,800
Week 6 1/18	235,925	73,050	38,325
Week 7 1/25	139,550	38,425	22,250
Week 8 2/1	146,725	43,000*	19,800*

- **Supply is not robust, steady or predictable**
- **Drop in doses is causing disruption.**  
It is difficult to schedule and keep appointments.
- **Demand far exceeds supply**  
King County has received less than 30% of the doses needed to vaccinate the currently eligible population.

\* Preliminary and subject to change.

# Long Term Care Residents and Staff

## Phase 1A, Tier 1 – Facilities

Facility Type	Number of Facilities	% of Facilities Enrolled	Not Enrolled in National Pharmacy Partnership	Total Staff	Total Residents	Total Persons
Skilled Nursing Homes (SNF)	51	96%	2	8288	5525	13,813
Adult Family Homes (AFH)	1203	34%	795	4210	5613	9823
Assisted Living (AL)	154	97%	4	7537	10,049	17,586
Totals:	1408	43%	801	20,035	21,187	41,222

## Phase 1A, Tier 2

- Home Care
- Home Health
- Hospice
- Adult Day Health
- Unpaid Family Caregivers

*Note: Population estimates based on licensed beds and staff per client assumptions. Other LTC groups who may be considered 1a such as Supported Living, home care and home health are not reflected in this table.*

# All People 65 Years and Older

King County  
Population Age  
65 and older

Total = 282,239

Region	Cumulative Incidence per 100,000	Total Population 2019	65+ years old	
			Population	% of total population
King County	3,349	2,226,297	282,239	12.7%
North Seattle and Shoreline	2,248	359,835	43,260	12.0%
Central Seattle	2,266	257,191	31,292	12.2%
Bellevue, Issaquah and Mercer Island	2,139	247,753	40,256	16.2%
Kirkland, Redmond, Bothell, and Woodinville	2,111	231,866	29,904	12.9%
East King County	1,634	172,896	15,907	9.2%
W Seattle, S Seattle, Delridge and Highline	4,048	207,223	28,813	13.9%
Auburn, Kent, and Federal Way	5,906	338,477	39,263	11.6%
Burien, Renton, Tukwila and Seatac	4,959	263,972	34,656	13.1%
Vashon	749	10,787	2,271	21.1%
South East King County	3,156	136,297	16,617	12.2%



# Intergenerational Households 50+

## WHAT DOES MULTIGENERATIONAL HOUSEHOLD MEAN?

A household where individuals from 2 or more generations live such as an elder and a grandchild.

### ELIGIBLE WITHIN THE DEFINITION OF MULTIGENERATIONAL HOUSEHOLD:

A person over 50 who:

- Cannot live independently and receives long-term care from a relative, caregiver (paid or unpaid), or someone who works outside the home
- Lives with and cares for a young child like grandparent/grandchild

### NOT ELIGIBLE IN THIS PHASE:

- Someone younger than 50
- Someone over 50 who cares for a partner or friend
- Any parent or guardian caring for their small child or teen

[CovidVaccineWA.org](https://CovidVaccineWA.org)



# Vaccine Delivery for Older Adults: Multi-Modal Approach

Delivery Mode	Focus Population	Locations	Key Partners / Locations
<b>Health Care System</b>	All Older Adults	Hospitals, Outpatient Clinics, Community Health Centers	All major health systems CHCs, and others
<b>Pharmacies</b>	All Older Adults Long term care facility residents	Multiple locations and outlets of major pharmacy and grocery store chains.	Walgreens, CVS and additional pharmacy and grocery chains coming soon.
<b>High Volume Sites</b>	All Older Adults Including those who are uninsured or undocumented	Phase-in to 10 plus sites total. First two in South King County, others in development.	PHSKC City of Seattle Health and Business Partners
<b>Pop-Up Clinics</b>	Low-Income, Immigrant Communities	Meal Sites, Senior Centers, Churches	Meal Sites, Senior Centers, Faith-based Organizations
<b>Mobile Vaccine Teams</b>	Adult Family Home and Senior Housing communities, Homeless Shelters.	Adult Family Homes, Supported Living, Senior Housing Buildings, Permanent Supportive Housing	Fire Departments, Public Health and Safety Net Providers will staff mobile vaccine teams.
<b>In-Home Vaccination</b>	Homebound, people who need support to live independently, face barriers to mobility	Private homes	Authorized health care personnel who make home visits



# HIGH VOLUME VACCINATION SITES

Opened in Kent and  
Auburn!



# Mobile Vaccine Teams: Hard to Reach Populations



## 8 Teams Deployed By:

Seattle Fire Department  
Bellevue Fire Department  
Puget Sound Fire Authority  
Public Health SKC

## Sites Visiting

Adult Family homes  
Permanent Supportive Housing  
Senior Housing

# HOW TO SCHEDULE A VACCINATION



Call Your Healthcare  
Provider



Use Phase Finder  
[www.FindYourPhaseWa.org](http://www.FindYourPhaseWa.org)



Call the WA State COVID-19  
Assistance Hotline  
1-800-525-0127, press #.  
M-F 6am-10pm, Weekends  
and state holidays 8am-6pm.



# ACCESS FOR MOST VULNERABLE

---

## **FOCUS ON:**

- Highest risk - oldest age bracket (start 75 plus)
- From geographies with highest incidence rate
- Racial and ethnic groups most impacted
- Immigrants and others in language communities
- Elders experiencing homelessness, formerly homeless or living in low-income senior housing.
- People who cannot live independently and their caregivers
- Kinship caregivers (raising grandchildren or other young relatives)

## **HOW:**

- Delivery modes that meet people where they are
- Intentional outreach to ensure access
- Support to navigate getting an appointment
- Transportation to appointments

# Community Partners

## Outreach to older adults



- AARP
- African American Elders Program
- African American Reach and Teach Health Ministry
- Aging and Disability Services
- Alzheimer's Association
- Catholic Community Services
- Childhaven
- Chinese Information and Service Center
- Crisis Connections
- Encompass
- GenPride
- Indian-American Community Services (IACS)
- Jewish Family Services
- Kin On
- Korean Women's Association
- Neighborhood House
- Open Doors for Multicultural Families
- Sound Generations
- King County Housing Authority
- Seattle Housing Authority



**King County**

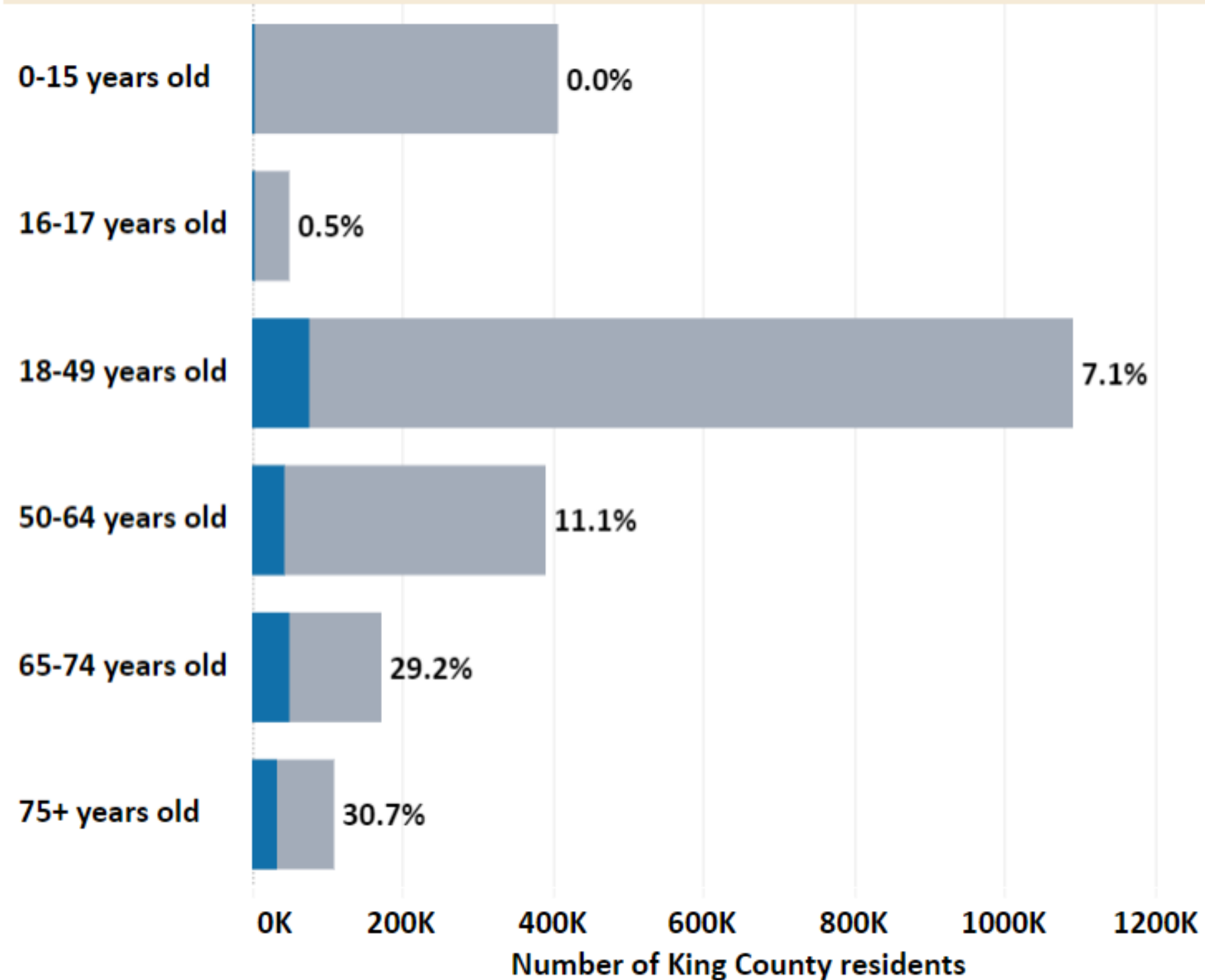


**ads** *Aging and Disability Services*  
Area Agency on Aging for Seattle and King County  
*Advocacy. Action. Answers on Aging*



# TRACK OUR PROGRESS

Proportion of King County residents with at least 1 dose documented by age group:



Note: This is preliminary data only as of Jan 26, 2020 and is subject to change.



# Public Health

## Seattle & King County



## Older Adults Vaccine Delivery

### Key To Success

- Doses - robust and predictable supply
- Appointments – easy to use system to book an appointment
- Partnership - support for the most vulnerable

**FOR MORE INFORMATION**

**[KINGCOUNTY.GOV/COVID/VACCINE](https://kingcounty.gov/covid/vaccine)**

