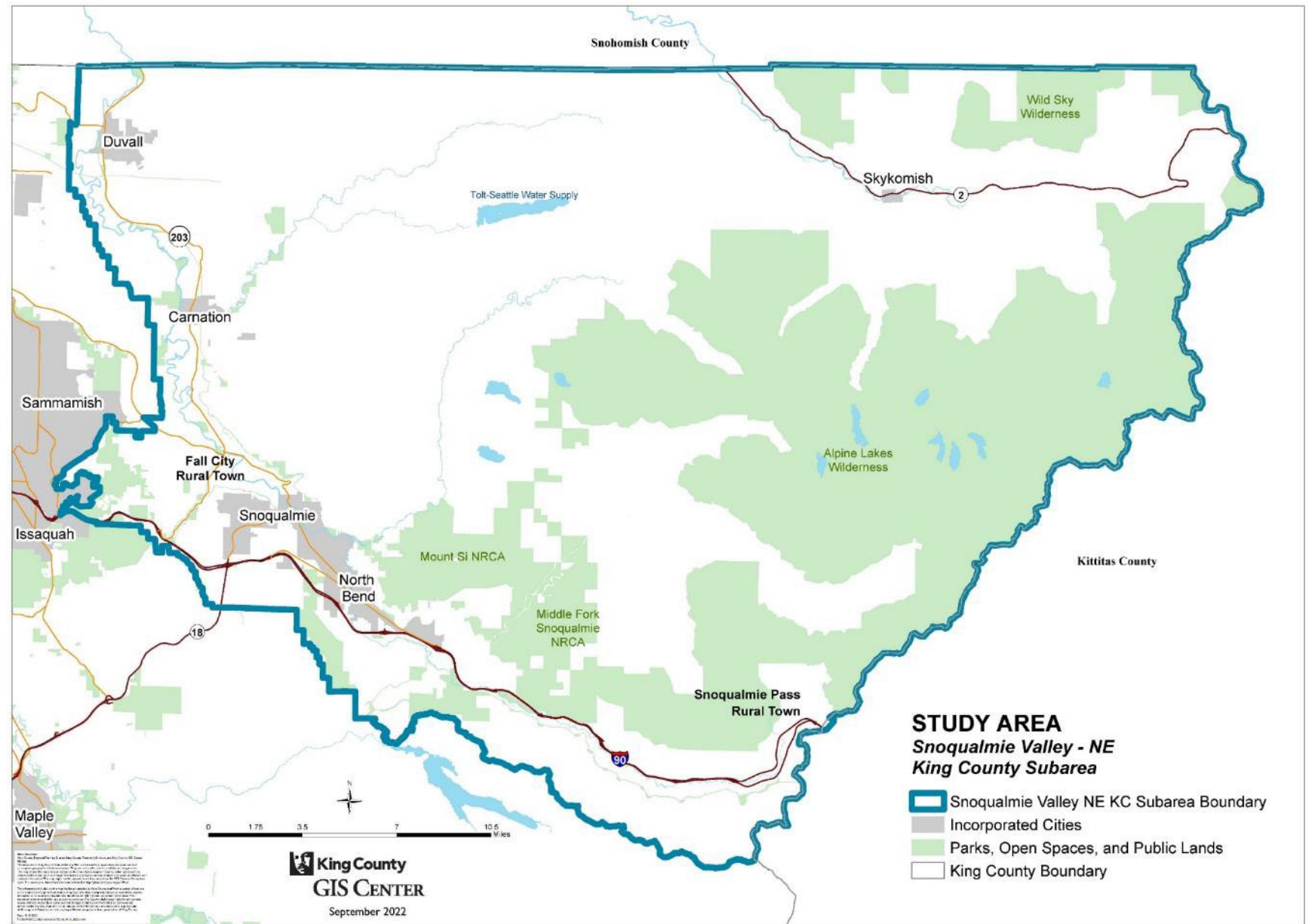




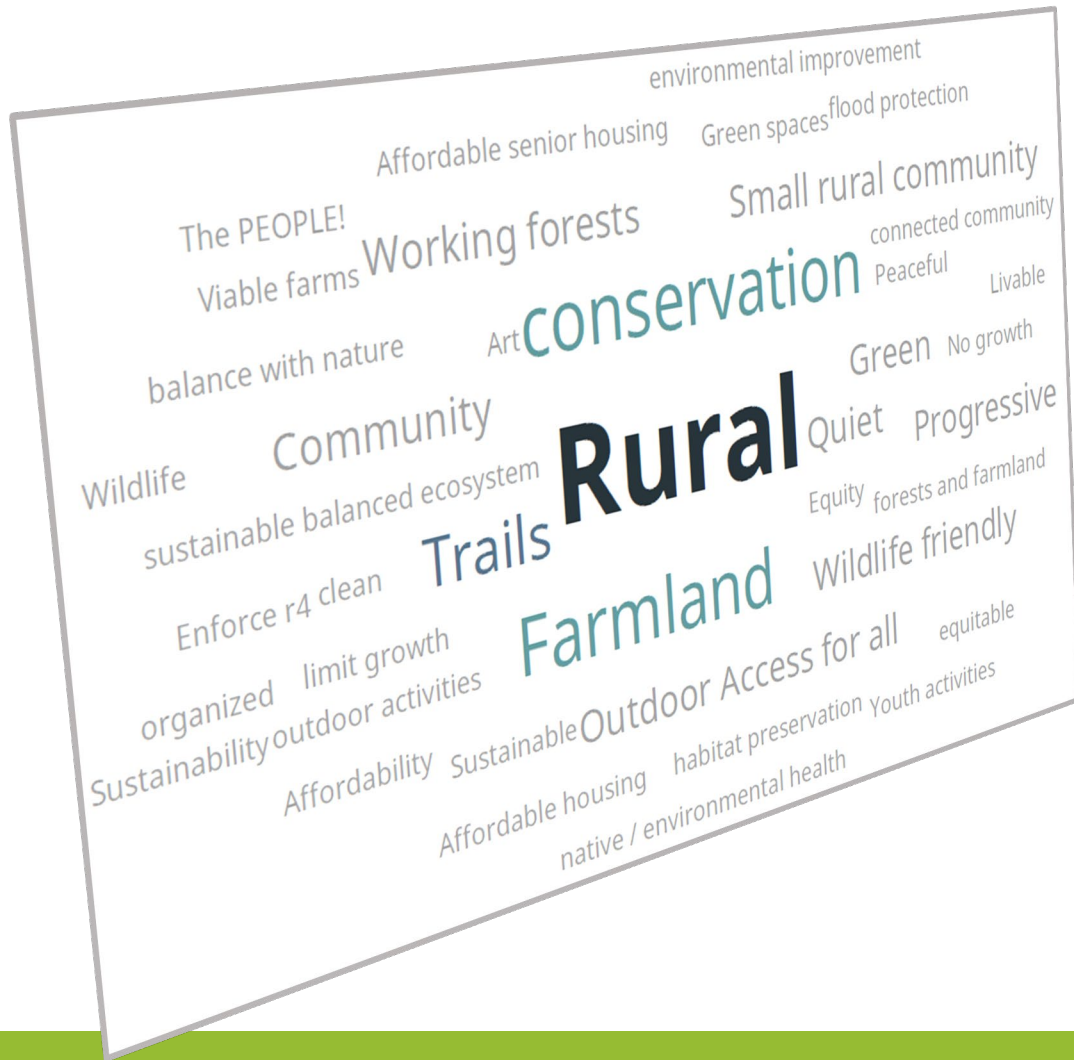
Snoqualmie Valley/Northeast King County Subarea Planning

Public Review Draft Presentation
LSLU Committee – June 27, 2023

Snoqualmie Valley/ Northeast King County Community Service Area



Turning feedback to planning



Process

1. Collect feedback
2. Categorize, noting frequency
3. Translate to a 20-year lens
4. Relate to framework of comprehensive plan
5. Refine
6. Share with community
7. Refine again
8. **Finalized for public review draft**



Vision Statement

The Snoqualmie Valley/Northeast King County area is characterized by strong rural communities with distinct cultures and histories, where people and businesses are thriving, the natural environment and agricultural lands are conserved and protected, farms are preserved, the community is resilient to climate change, and services and programs are accessible to residents in a way that preserves the unique rural character.

The community vision is a forward-looking statement of how the community wants to be over the next 20 years.



Guiding Principles

- *Conserve and protect forests, rivers, lakes, and open spaces.*
- *Conserve and protect the subarea's working farmlands by protecting agricultural lands and supporting local farmers, ranchers, and growers.*
- *Encourage, protect, and expand a range of housing choices for all.*
- *Promote economically sustainable local businesses and organizations across the subarea and support the business districts of the Fall City and Snoqualmie Pass Rural Towns.*
- *Preserve cultural and historic resources and landmarks.*
- *Enhance the relationship between King County and the Tribes by centering Tribal needs, land stewardship, and treaty rights.*
- *Preserve the unique rural character across the subarea, including in commercial areas and residential communities.*
- *Support transit and transportation options, including active transportation and recreation, consistent with rural levels of service.*
- *Support programs, organizations, and services for youths, seniors, veterans, and others to build community connections.*
- *Promote communities that are resilient to natural hazards and climate change.*

The guiding principles support the vision and help guide the recommended policies.



Land use policies

Policies:

- Fall City special district overlay
- Support the character and role of the rural town of Snoqualmie Pass
- Protect view corridors along I-90 and US-2
- Maintain existing character and scale of the Preston Industrial Area
- Retain existing boundaries of the Community Business district in the Fall City Rural Town
- Coordinate with Valley cities on annexations





Housing and human services policies

Housing Policies:

- Work with Valley cities, Skykomish and affordable housing providers to increase affordable housing
- Support to housing stability programs
- Incentivize diversity of housing in Fall City
- Workforce housing at Snoqualmie Pass

Human Services Policies:

- Support increased availability of behavioral and mental health
- Partner with senior service centers and service providers



King County

Local Services



Environment policies

Policies:

- Improve existing road networks crossing the Snoqualmie Valley floodplain
- Restore riparian corridors
- Reduce flood and channel migration risk



Parks and open space policies

Policies:

- Expand recreation programming
- Support efforts to address overcrowded trailheads
- Support efforts to provide, manage, and maintain community facilities, gathering spaces, and trails in Fall City



King County

Local Services

Transportation policies

Policies:

- Right-size mobility solutions
- Support safety improvement to the SR906 corridor
- Coordinate with WSDOT on improvements to SE Redmond-Fall City Road
- Require new sidewalks within the Fall City Business District
- Prohibit road connections between the City of Snoqualmie and 356th Avenue S.E. and Lake Alice Road S.E.





Services and utilities policies

Policies:

- Support reliability in areas with chronic power outages
- Fall City's commercial on-site septic system shall serve only existing properties in the District
- Increase access to reliable and affordable broadband internet



Economic development policies

Policies:

- Support local businesses and leverage natural beauty and resources
- Support outdoor recreation and tourism
- Support the experience of visitors at Snoqualmie Pass
- Focus economic uses in existing areas
- Consider ways agritourism can support the economic viability of farms
- Support communities adjacent to the Agricultural District



Subarea map amendments



King County
Local Services



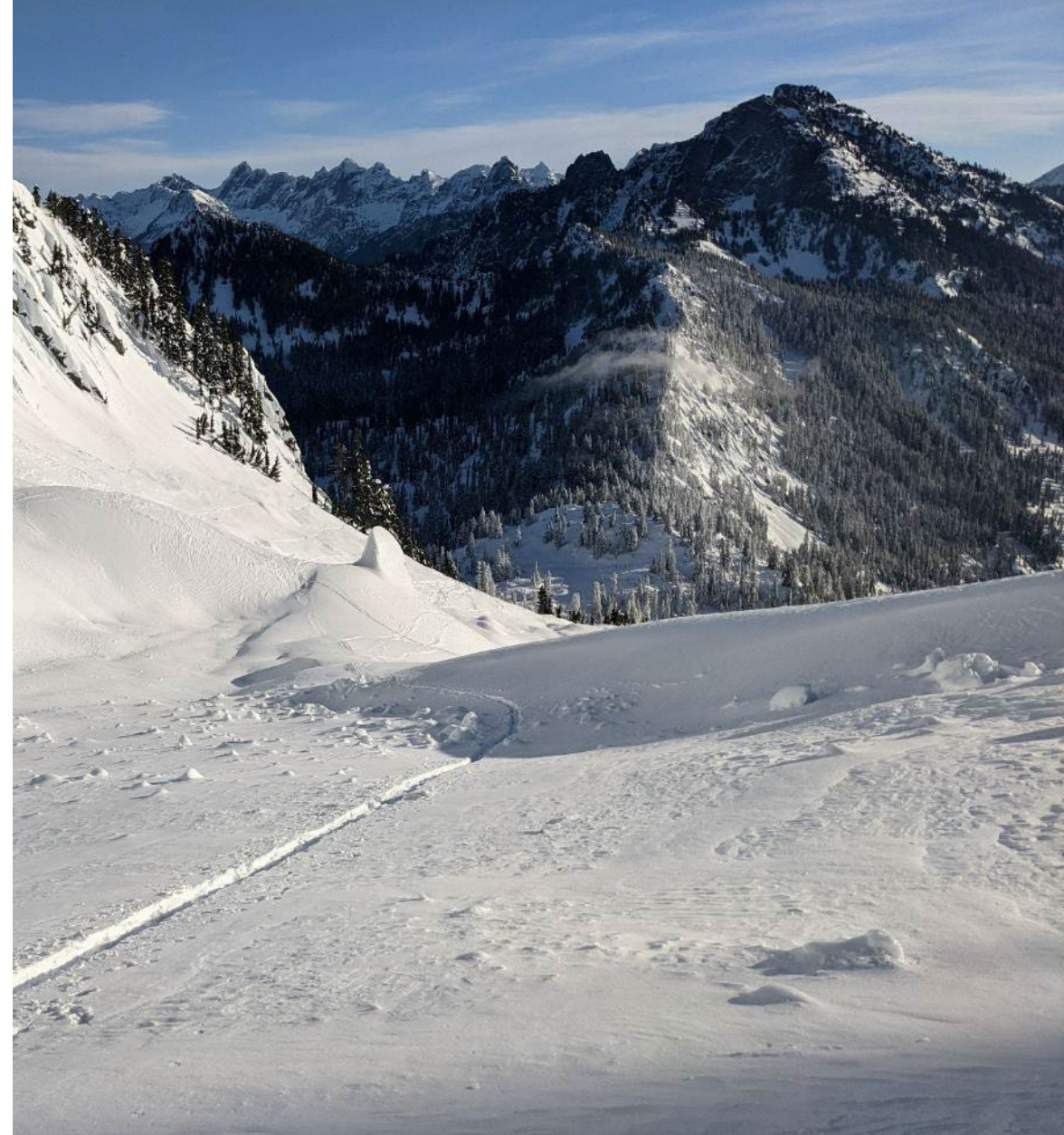
Fall City

- Residential Development Conditions
- Updates to Commercial Overlay
- Fall City Industrial Parcel

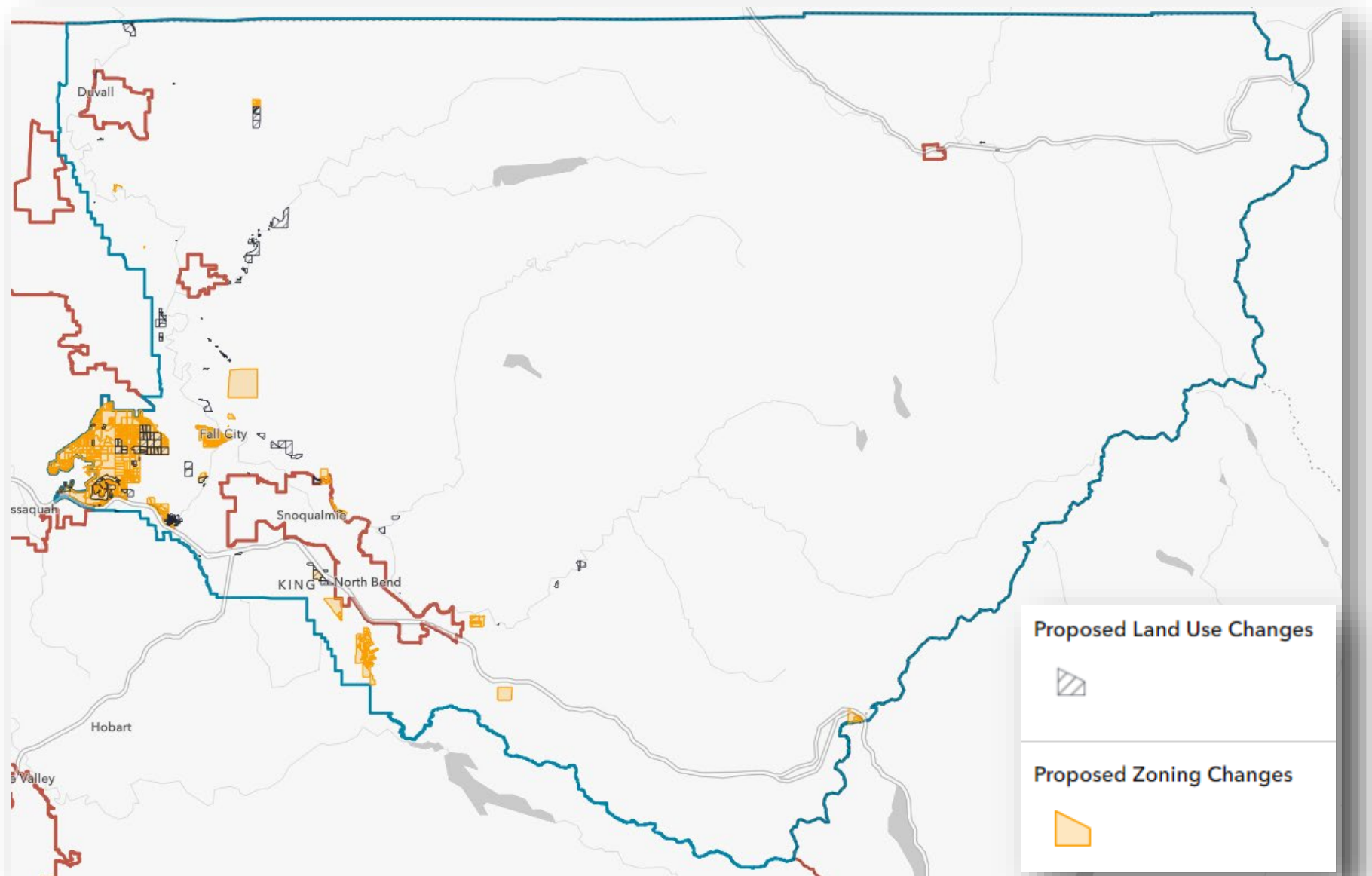


Snoqualmie Pass

- Snoqualmie Pass
Microhousing and Viewshed
Protection Map Amendment



General Map Cleanup



Thank you



www.publicinput.com/SnoValleyNEKC



King County
Local Services