

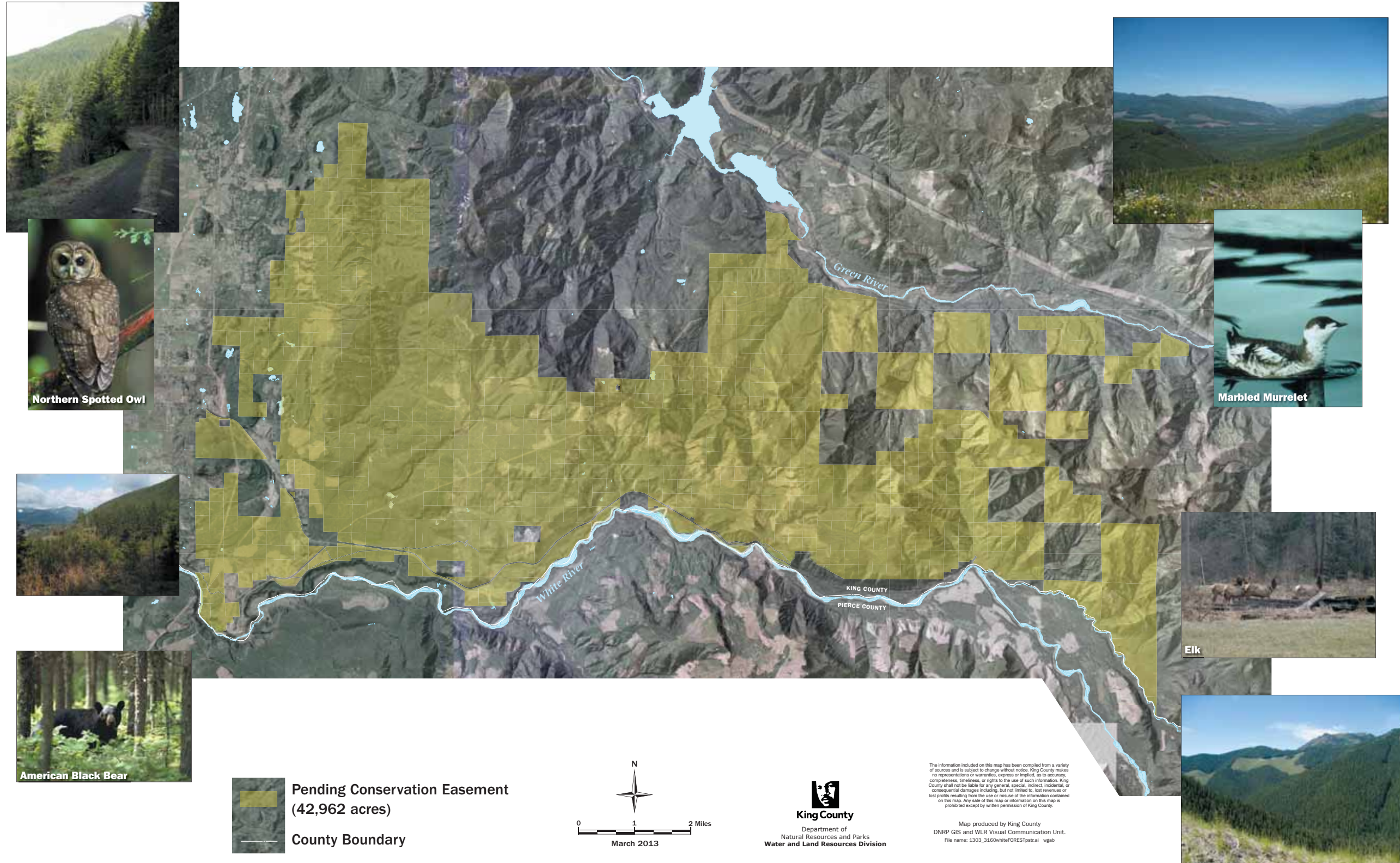


KING COUNTY AND HANCOCK WHITE RIVER FOREST

42,962 Acres Pending Permanent Protection



A Manulife Asset Management Company





Northern Spotted Owl


Marbled Murrelet

American Black Bear

Elk

 Pending Conservation Easement
(42,962 acres)

 County Boundary


0 1 2 Miles
March 2013


King County
Department of
Natural Resources and Parks
Water and Land Resources Division

The information included on this map has been compiled from a variety of sources and is subject to change without notice. King County makes no representations or warranties, express or implied, as to accuracy, completeness, timeliness, or rights to the use of such information. King County shall not be liable for any general, special, indirect, incidental, or consequential damages including, but not limited to, lost revenue or lost profits resulting from the use or misuse of the information contained on this map. Any sale of this map or information on the map is prohibited except by written permission of King County.

Map produced by King County
DNRP GIS and WLR Visual Communication Unit.
File name: 1303_3160whiteFORESTpstr.ai wgab