

## DECLARATION OF SURPLUS PROPERTY

COMMON PROPERTY NAME:            WHITE CENTER WORKSHOP

COMMON ADDRESS/LOCATION:        206 SW 112th Street, Seattle

TAX ACCOUNT NUMBER:            APN #062304-9375

**CUSTODIAL AGENCY COMMENTS:**    King County's Real Estate Services Section, still often referred to as "Property Services", wishes to declare approximately .8 acres within the Urban Growth Area southwest of the City of Seattle as surplus to its needs. The address is 206 SW 112<sup>th</sup> Street, lying east of Lakewood Park, Evergreen Athletic Field, and Lake Garrett. There is a cellular tower in the northwest corner of the property. A small King County Radio Communications Services building is connected to the cell tower. The cell tower and radio building will remain on the property and their uses will continue. In the southeast portion of the property there is an old modular office space currently rented month-to-month to a non-government entity.

The White Center Workshop parcel had been previously surplussed. Real Estate Services is redistributing a Notice to Surplus to be certain we are aware of all interest/comments/concerns.

The County's Department of Community and Health Services has expressed an interest in possible development for affordable housing.

**PROPERTY SERVICES DETERMINATION:**    SURPLUS TO COUNTY NEEDS

By:           Wayne Ruskau          

Date:           7/23/08          

Inventory status Changed:            By: \_\_\_\_\_

Date: \_\_\_\_\_

Council Motion / Ordinance:        No. \_\_\_\_\_

Date: \_\_\_\_\_

Surplus Property Disposition:        To: \_\_\_\_\_

Date: \_\_\_\_\_

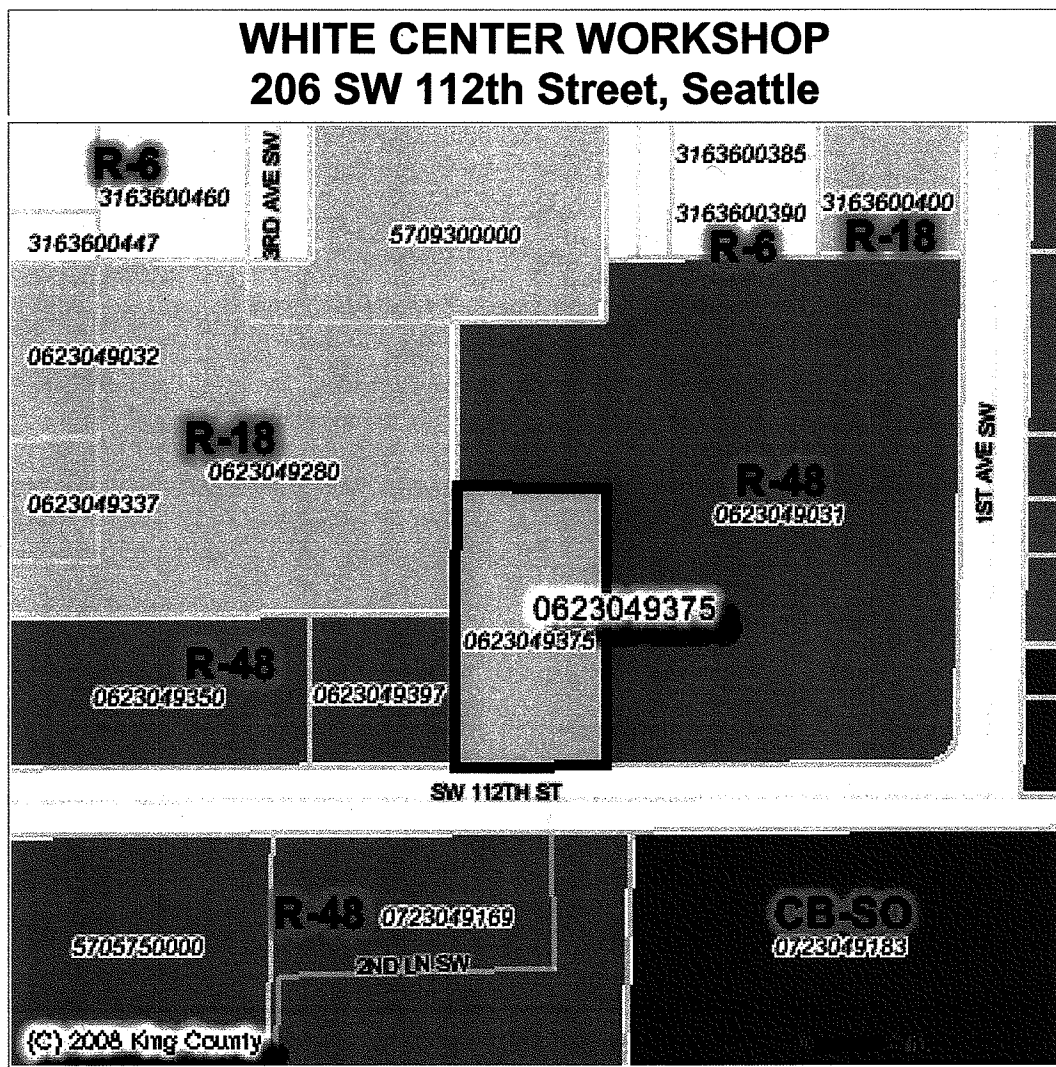
File/Application:                        No. \_\_\_\_\_

Property Name	Tax Numbers	Size	Jurisdiction	Zoning	Owner	Appraised Value
<b>WHITE CENTER WORKSHOP</b>	#062304-9375	0.837 acres, or 36,465 sq ft	King County	R-18	Real Estate Services Section	None Yet

King County's Real Estate Services Section, still often referred to as "Property Services", wishes to declare approximately .8 acres within the Urban Growth Area southwest of the City of Seattle as surplus to its needs. The address is 206 SW 112<sup>th</sup> Street, lying east of Lakewood Park, Evergreen Athletic Field, and Lake Garrett. There is a cellular tower in the northwest corner of the property. A small King County Radio Communications Services building is connected to the cell tower. The cell tower and radio building will remain on the property and their uses will continue. In the southeast portion of the property there is an old modular office space currently rented month-to-month to a non-government entity.

The White Center Workshop parcel had been previously surplus. Real Estate Services is redistributing a Notice to Surplus to be certain we are aware of all interest/comments/concerns.

The County's Department of Community and Health Services has expressed an interest in possible development for affordable housing.

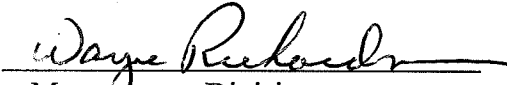




# King County

Wednesday, July 2, 2008

TO: King County Councilmembers  
King County Department Directors  
King County Division Directors/Managers

FM: Wayne Richardson, Manager   
Real Estate Services Section, Facilities Management Division

RE: **Surplus Property Notice: WHITE CENTER WORKSHOP**  
**Responses Due by Friday, July 18, 2008**

King County's Real Estate Services Section, still often referred to as "Property Services", wishes to declare approximately .8 acres within the Urban Growth Area southwest of the City of Seattle as surplus to its needs. The address is 206 SW 112<sup>th</sup> Street, lying east of Lakewood Park, Evergreen Athletic Field, and Lake Garrett. There is a cellular tower in the northwest corner of the property. A small King County Radio Communications Services building is connected to the cell tower. The cell tower and radio building will remain on the property and their uses will continue. In the southeast portion of the property there is an old modular office space currently rented month-to-month to a non-government entity.

The White Center Workshop parcel had been previously surplussed. Real Estate Services is redistributing a Notice to Surplus to be certain we are aware of all interest/comments/concerns.

The County's Department of Community and Health Services has expressed an interest in possible development for affordable housing.

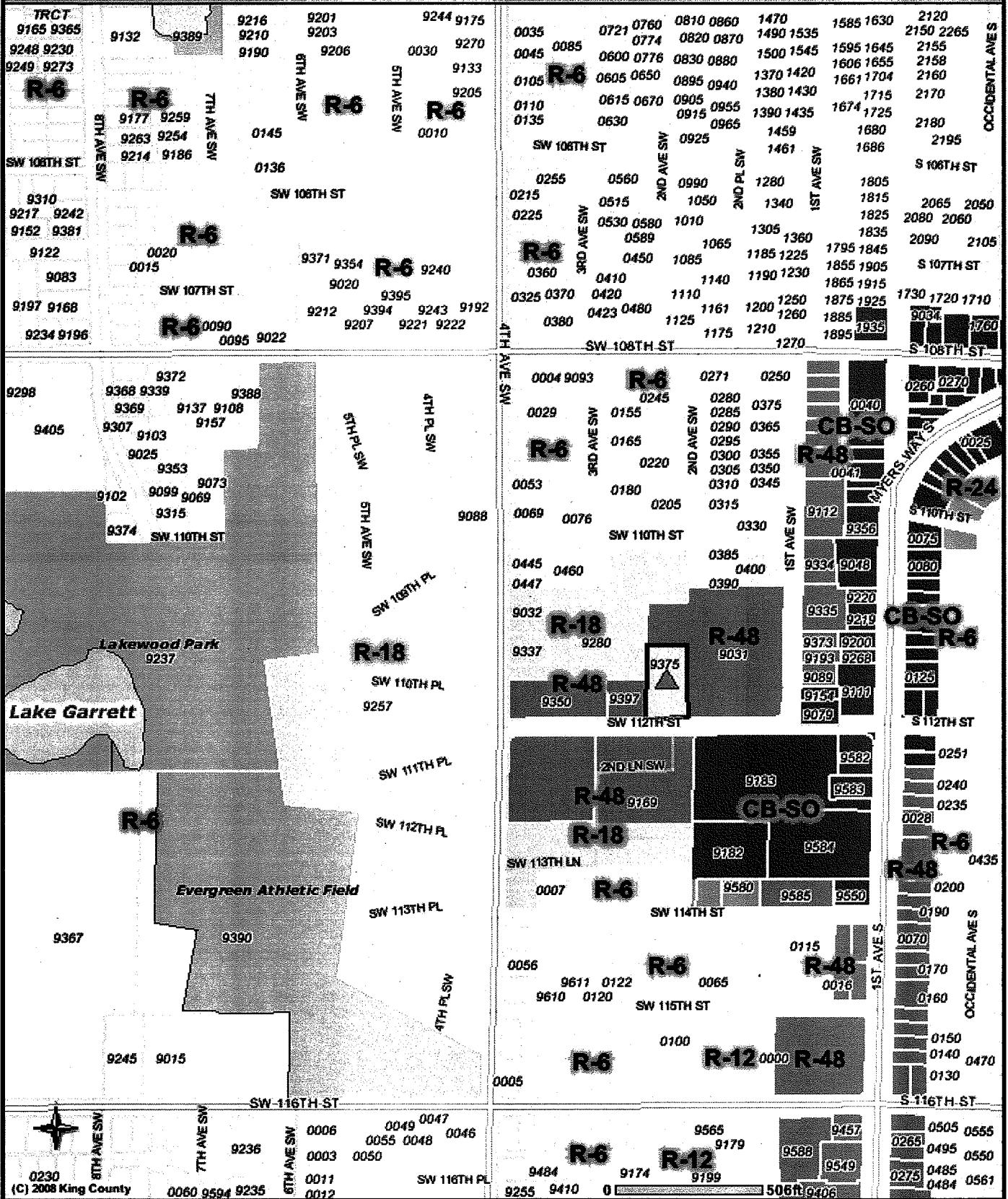
Pursuant to King County Code 4.56.100, prior to the transfer, sale or trade of surplus property, the Facilities Management Division must first determine whether any other County department has a need for the property for government services. Priority is given to uses related to the provision of essential government services. Essential government services is defined as services for public health, public safety, or services related to transportation, water quality, surface water or other utilities.

However, it has been determined that this property does qualify for affordable housing, and absent a need by other custodians, DCHS has requested that it be declared surplus.

Please circulate this notice within your department or division to determine if the property is needed for government services or if there are any comments or concerns regarding the surplussing of this property. If you have any questions, please call Anne Lockmiller, Surplus Real Properties Agent, Real Estate Services Section, at 206.205.5638.

**Please return responses of interest to Real Estate Services by Friday, July 18<sup>th</sup>, 2008.**

# WHITE CENTER WORKSHOP, 206 SW 112th Street



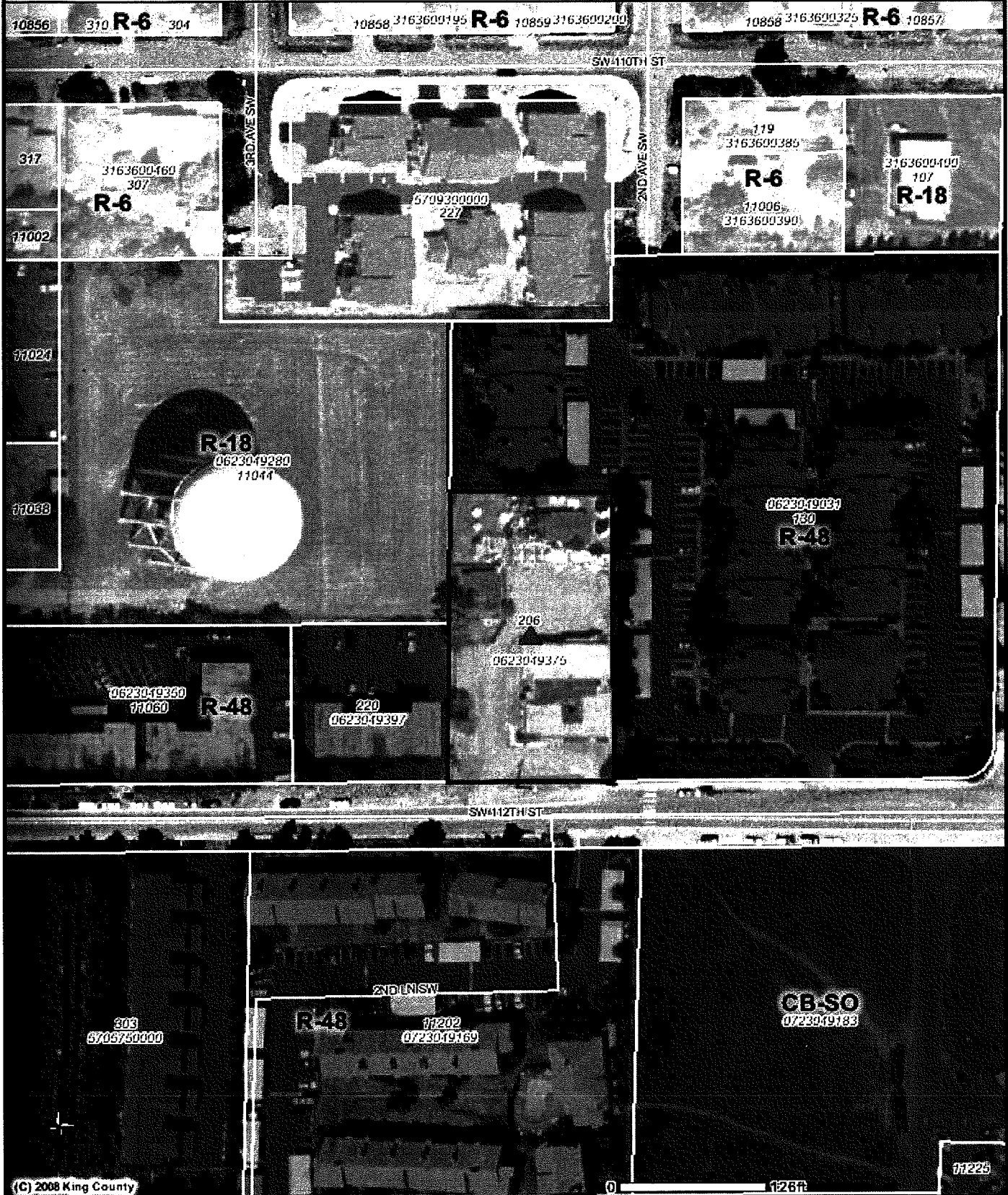
COMMENTS: WHITE CENTER WORKSHOP, APN 062304-9375

The information included on this map has been compiled by King County staff from a variety of sources and is subject to change without notice. King County makes no representations or warranties, express or implied, as to accuracy, completeness, timeliness, or rights to the use of such information. This document is not intended for use as a survey product. King County shall not be liable for any general, special, indirect, incidental, or consequential damages including, but not limited to, lost revenues or lost profits resulting from the use or misuse of the information contained on this map. Any sale of this map or information on this map is prohibited except by written permission of King County.

Date: 7/1/2008 Source: King County IMAP - Property Information (<http://www.metrokc.gov/GIS/IMAP>)



# WHITE CENTER WORKSHOP, 206 SW 112th Street



(C) 2008 King County

COMMENTS: WHITE CENTER WORKSHOP, APN 062304-9375

The information included on this map has been compiled by King County staff from a variety of sources and is subject to change without notice. King County makes no representations or warranties, express or implied, as to accuracy, completeness, timeliness, or rights to the use of such information. This document is not intended for use as a survey product. King County shall not be liable for any general, special, indirect, incidental, or consequential damages including, but not limited to, lost revenues or lost profits resulting from the use or misuse of the information contained on this map. Any sale of this map or information on this map is prohibited except by written permission of King County.

Date: 7/1/2008 Source: King County iMAP - Property Information (<http://www.metrokc.gov/GIS/iMAP>)

