

# Transit Access & Parking

Regional Transit Committee • May 17, 2017



# Presentation Outline

- **PSRC transit access work products**
- **Regional transit parking trends**
- **Regional transit access and parking strategy and Transportation Policy Board feedback**
- **Next steps**



# Access: Defining Terms

**“Access”**

**“Transit access”**

**“Access to transit”**

**=**

**The ability to get to  
and use transit**

**“Access improvement”**

**“Increasing/improving  
access to transit”**

**=**

**Any thing (e.g. policy, plan,  
program, operational change,  
capital project, etc.) that makes  
it easier to get to and use transit**

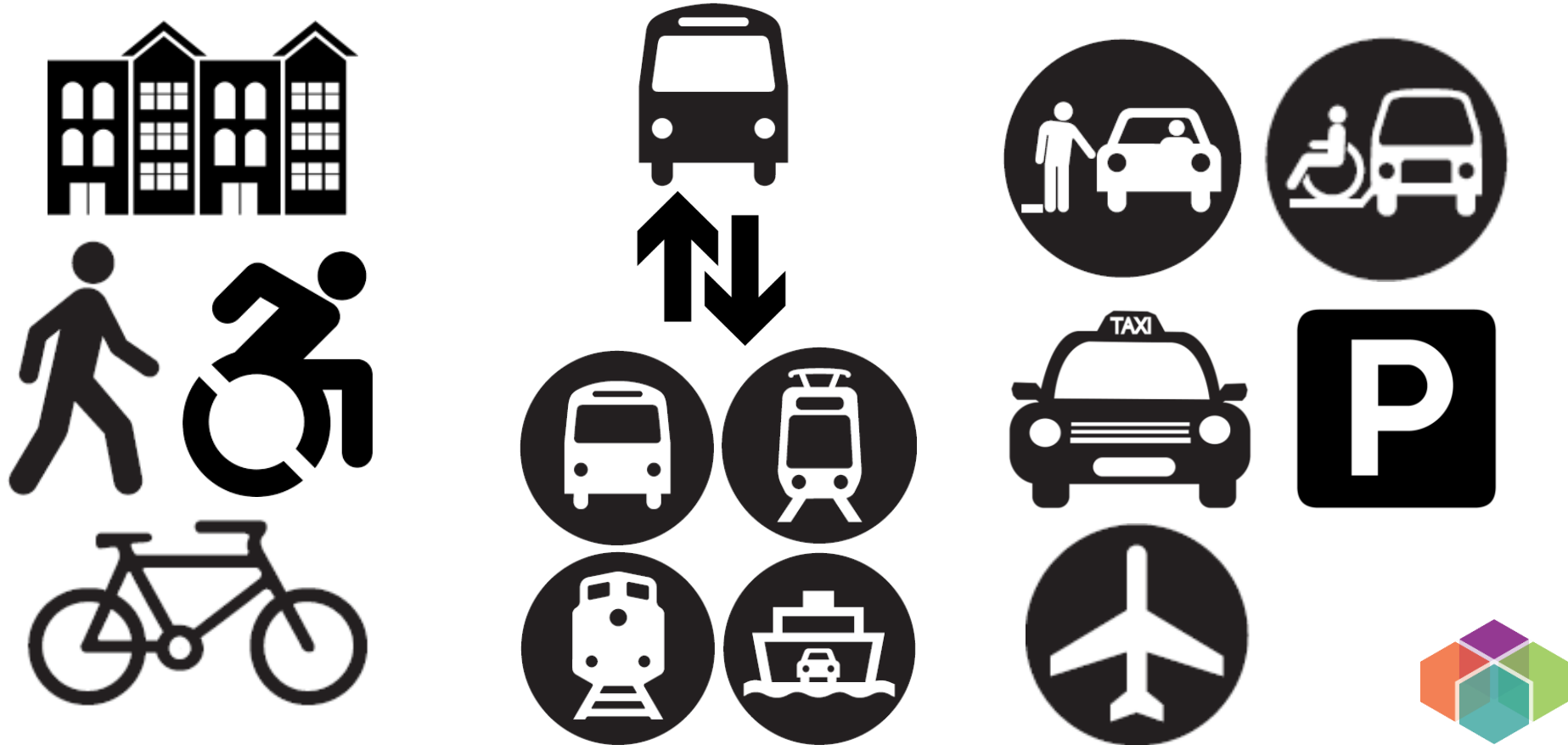


# Access: Setting Premises

- 1. Access to transit is really important, and increasingly so**
- 2. There are many ways to increase access to transit**



# People Access Transit in Many Ways



# PSRC Work: Transit Access Assessment



Puget Sound Regional Council

## TRANSIT ACCESS ASSESSMENT: EXECUTIVE SUMMARY

As part of its Livable Communities 2 work program, the Puget Sound Regional Council conducted a Transit Access Assessment. This assessment builds on existing work around the region to identify regional transit access needs. The products of this effort are findings related to transit access, particularly at major sites of transit service, and recommended next steps for PSRC to improve transit access and to inform the next update to Transportation 2040, the region's long range transportation plan.

PSRC's Transit Access Assessment was supported by a Transit Access Working Group, consisting of staff from each of the region's transit agencies—particularly those working on their own transit access projects and studies—and local jurisdictions throughout the region. The working group met 13 times between March 2014 and December 2015. PSRC's Transportation Operators Committee (TOC) oversaw the Transit Access Assessment and received periodic briefings on the progress of this effort.



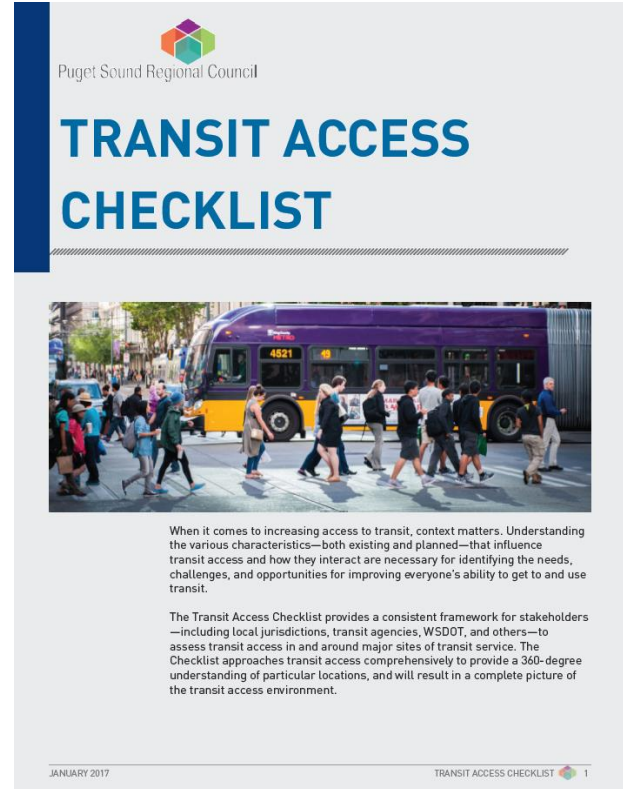
- **Completed in 2016**
- **Built off existing work in the region**
- **Supported by a staff working group**
- **Best practices review, interviews with local electeds, and 8 case studies**
- **Identified findings and recommended next steps for PSRC**



# Transit Access Checklist & Toolkit

The findings the Checklist and Toolkit address:


## 1. *Context matters for improving access*



The image shows the cover of a report titled "TRANSIT ACCESS CHECKLIST" by the Puget Sound Regional Council. The cover features a blue vertical bar on the left side. At the top right is the Puget Sound Regional Council logo, which consists of a stylized hexagon made of smaller colored hexagons (purple, green, orange, teal). Below the logo is the text "Puget Sound Regional Council". The title "TRANSIT ACCESS CHECKLIST" is written in large, bold, blue capital letters. Below the title is a horizontal line with a dashed pattern. In the center is a photograph of a purple and yellow bus (number 4521) stopped at a bus stop with several people waiting. Below the photograph is a paragraph of text explaining that context matters for increasing transit access. At the bottom of the cover, there is another paragraph explaining that the checklist provides a consistent framework for stakeholders to assess transit access. At the very bottom, there is a footer with the date "JANUARY 2017" on the left and "TRANSIT ACCESS CHECKLIST" followed by a small version of the logo on the right.

Puget Sound Regional Council

## TRANSIT ACCESS CHECKLIST



When it comes to increasing access to transit, context matters. Understanding the various characteristics—both existing and planned—that influence transit access and how they interact are necessary for identifying the needs, challenges, and opportunities for improving everyone’s ability to get to and use transit.

The Transit Access Checklist provides a consistent framework for stakeholders—including local jurisdictions, transit agencies, WSDOT, and others—to assess transit access in and around major sites of transit service. The Checklist approaches transit access comprehensively to provide a 360-degree understanding of particular locations, and will result in a complete picture of the transit access environment.

JANUARY 2017

TRANSIT ACCESS CHECKLIST



# Transit Access Checklist & Toolkit

The findings the Checklist and Toolkit address:

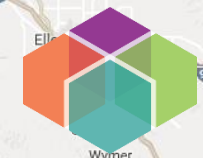
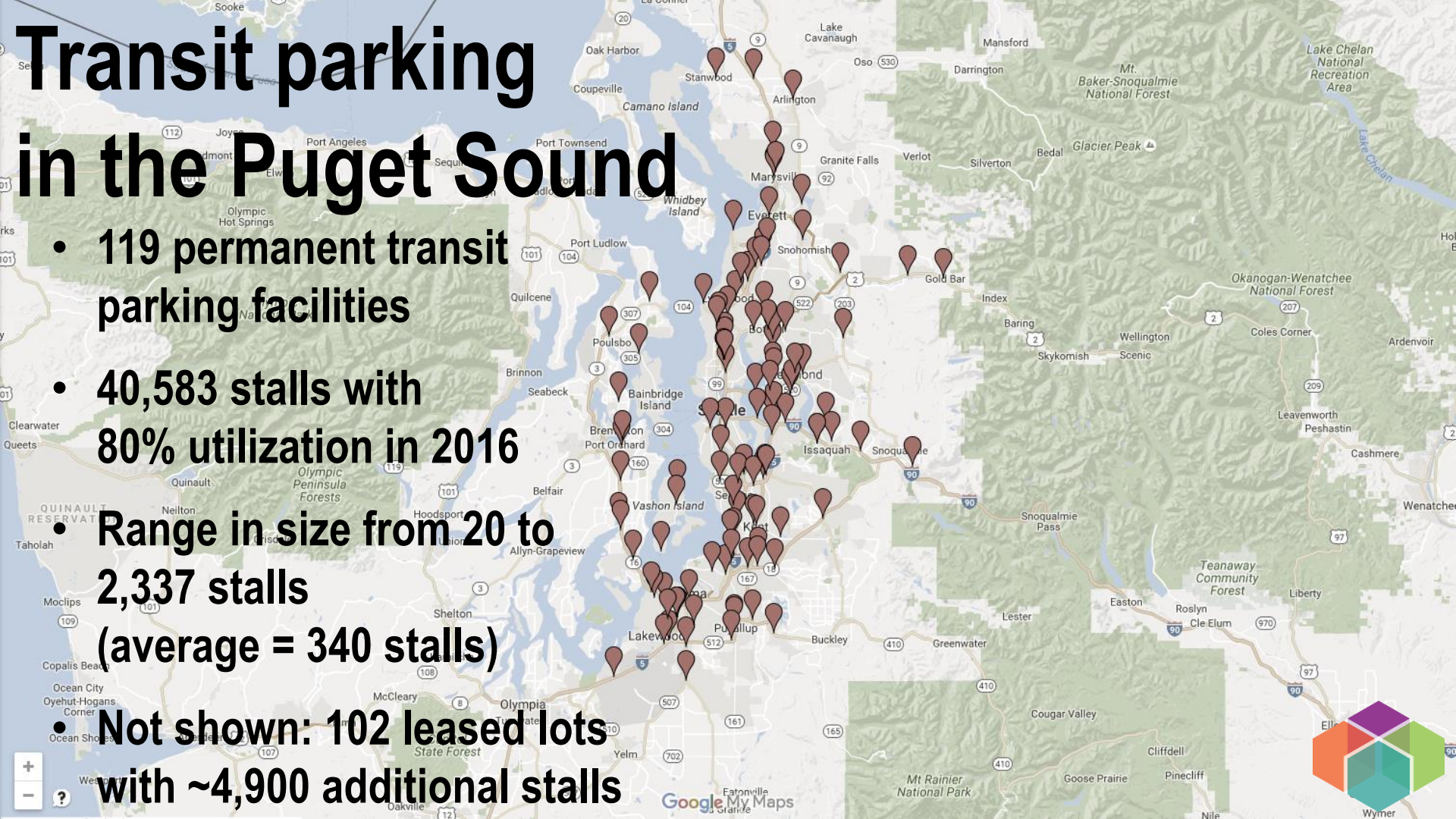
- 1. Context matters for improving access***
- 2. Roles aren't always clear for delivering access improvements***





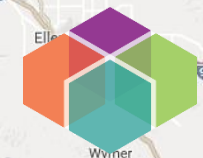
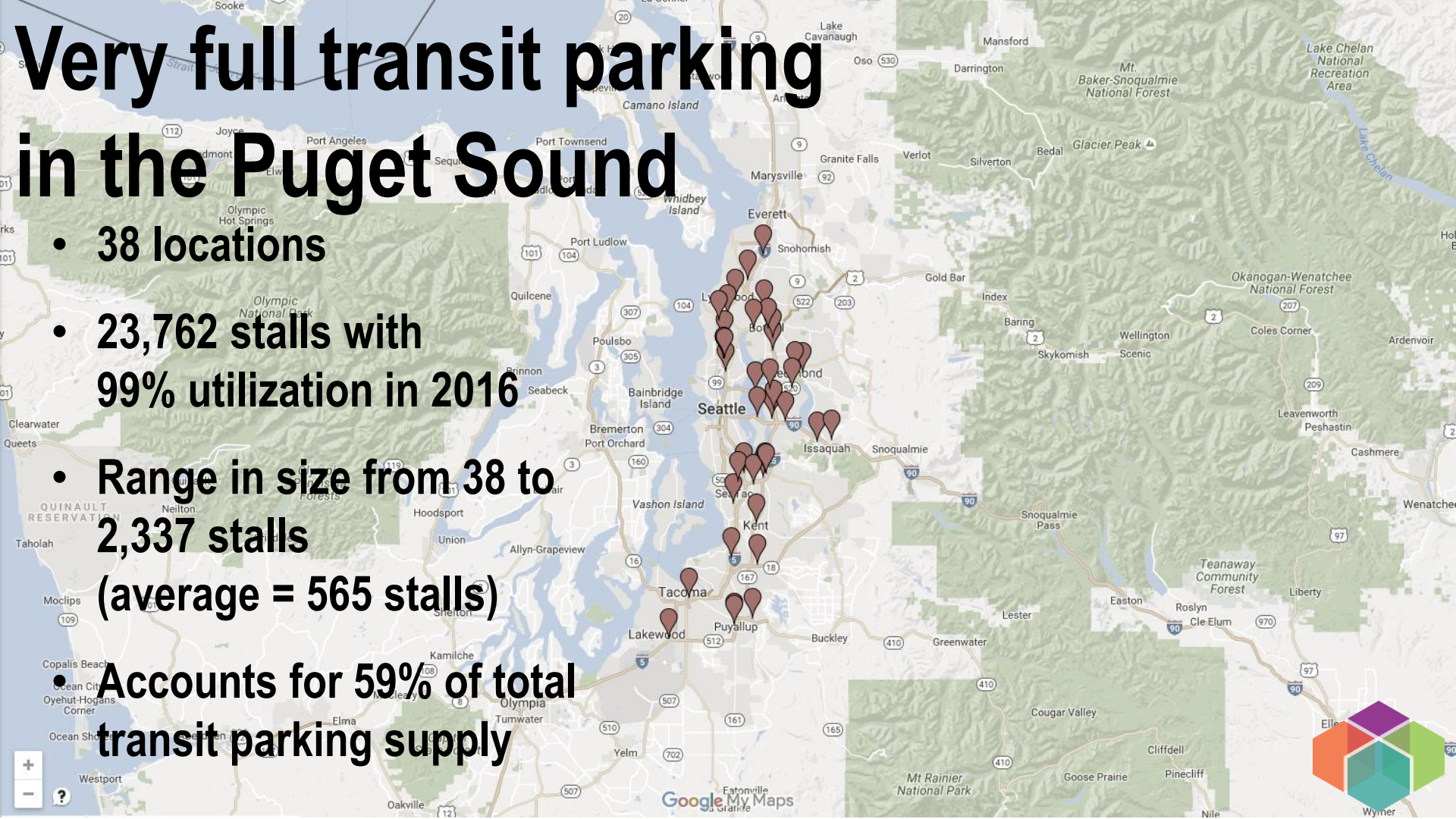
# Transit parking in the Puget Sound

- 119 permanent transit parking facilities
- 40,583 stalls with 80% utilization in 2016
- Range in size from 20 to 2,337 stalls (average = 340 stalls)
- Not shown: 102 leased lots with ~4,900 additional stalls



# Very full transit parking in the Puget Sound

- 38 locations
- 23,762 stalls with 99% utilization in 2016
- Range in size from 38 to 2,337 stalls (average = 565 stalls)
- Accounts for 59% of total transit parking supply



# Very full transit parking ownership

# ownership



= 1\*



= 9\*



= 12\*



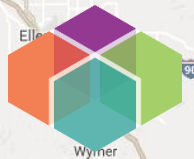
= 12\*



= 1

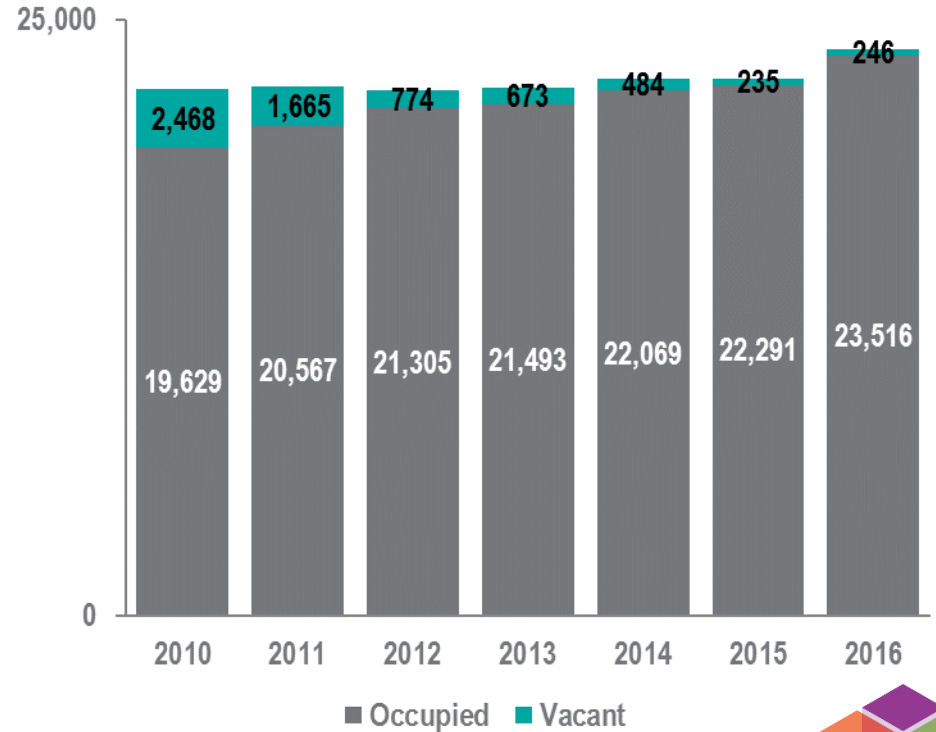
OTHER = 3

+  
-  
? \*shared ownership

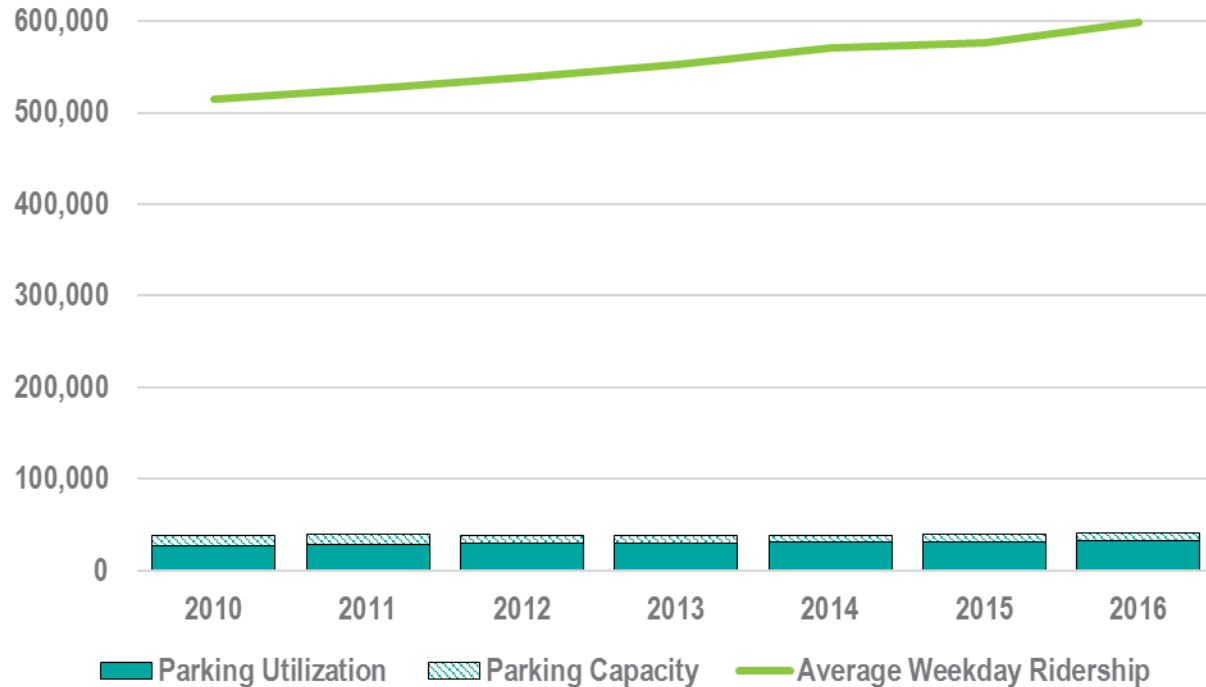


# Very full transit parking trends

- Same 37 locations over time
- 2016 includes Angle Lake Station
- Added 1,665 stalls between 2010 and 2016 (a 7.5% increase)
- Occupancy increased from 89% in 2010 to 99% in 2016



# Transit Ridership & Parking Capacity



# PSRC Board Direction

**Board-adopted Transportation 2040 Update work program calls for a “regional access and parking strategy”**



# Access & Parking Strategy Elements

**We expect that the strategy will...**

- ...identify improving access to transit as a regional priority**
- ...treat access to transit comprehensively**
- ...indicate locations where there will be substantial transit activity in the future as access opportunity areas**
- ...identify new parking supply and policy issues specific to managing demand at very full park and rides**



# What we heard from the TPB

## The strategy should...

- ...measure the extent of access and then maximize it, especially for certain user types – low-income, seniors, etc.
- ...emphasize the importance of context, that access is multi-faceted, and that different areas will have different needs
- ...reflect the need for managing demand at the region's most full park and rides
- ...be innovative across the board to increase access





# Next Steps

- **Develop regional access and parking strategy**
- **Re-convene the Transit Access Working Group and other stakeholders to review draft strategy in the summer**
- **Draft strategy for TPB review anticipated in September**
- **Release draft of Transportation 2040 update in December**



# Thank you.

Alex Krieg  
(206) 464-6172  
[akrieg@psrc.org](mailto:akrieg@psrc.org)

