

SECTIONS 8 & 9, T. 26 NORTH, R. 6 EAST, W.M.

2010-0454 ATTACHMENT A

16941

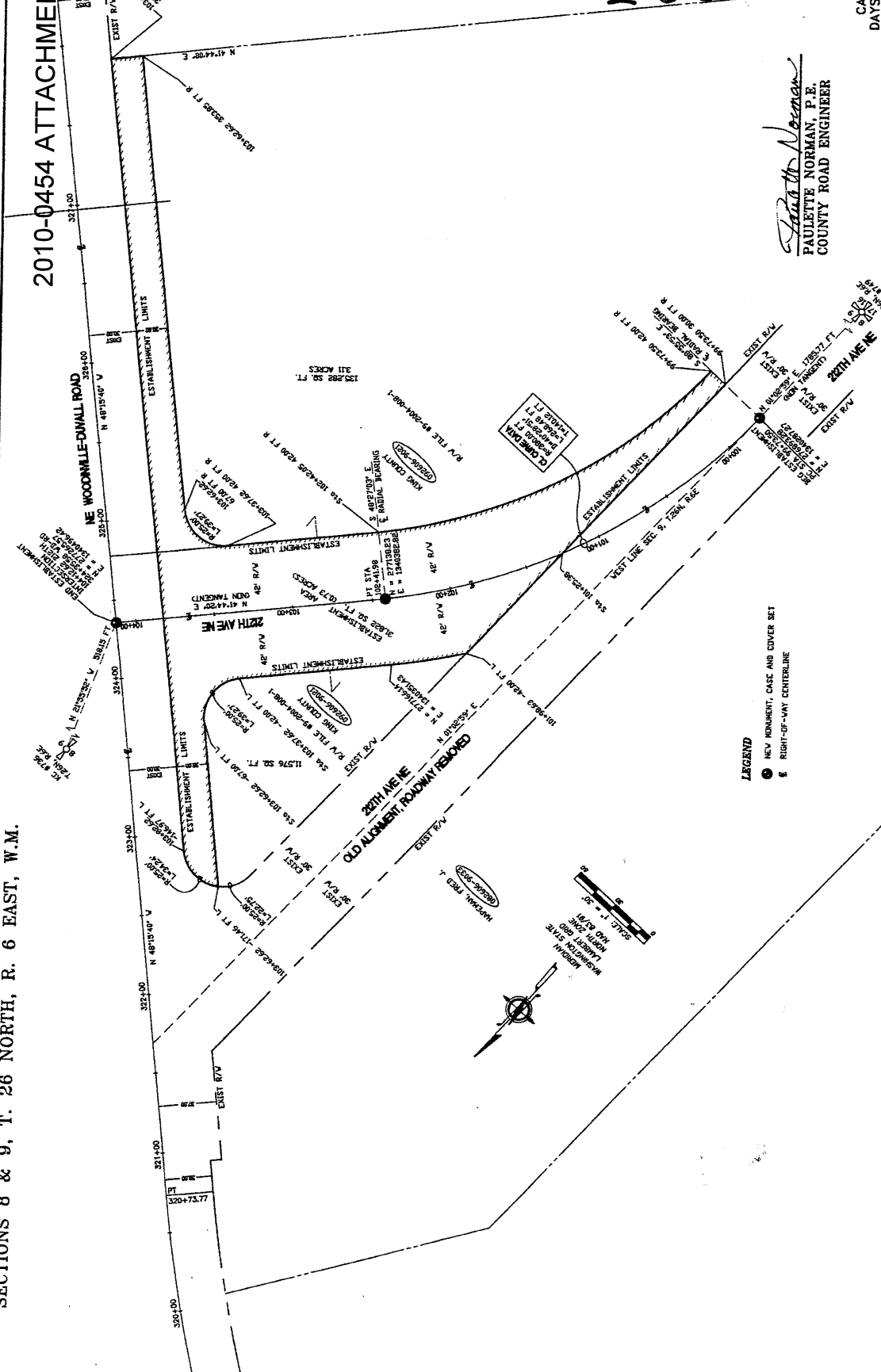
CALL 2 WORKING
DAYS BEFORE YOU DIG
1-800-424-5555
(UNDERGROUND UTILITY LOCATIONS ARE APPROX.)

SHEET 1
OF 1
King County
SHEETS 313-53

ATTACHMENT A

KING COUNTY DEPT. OF TRANSPORTATION
HAROLD TANGIUCHI, DIRECTOR
NE WOODVILLE - DUWALL ROAD
AT 212th AVENUE NE
ESTABLISHMENT PLAN

Paulette Norman
PAULETTE NORMAN, P.E.
COUNTY ROAD ENGINEER



LEGEND
● NEW MONUMENT, CASE AND COVER SET
— RIGHT-OF-WAY CENTERLINE



FED. AID No. _____
PROJECT No. 101404
SURVEY No. 8-28-8-12
MAINTENANCE DIVISION No. 1

FILE	DATE	BY	REVISION
FIELD BOOK: WOND 11/2006			
SURVEYED: WOND 11/2006			
SURVEY BASE MAP: GRONBERG 11/2006			
DESIGN ENTERED: J. EVANS 4/2010			
CHECKED: J. EVANS 4/2010			
SUPERVISOR: T. CRAY 4/2010			