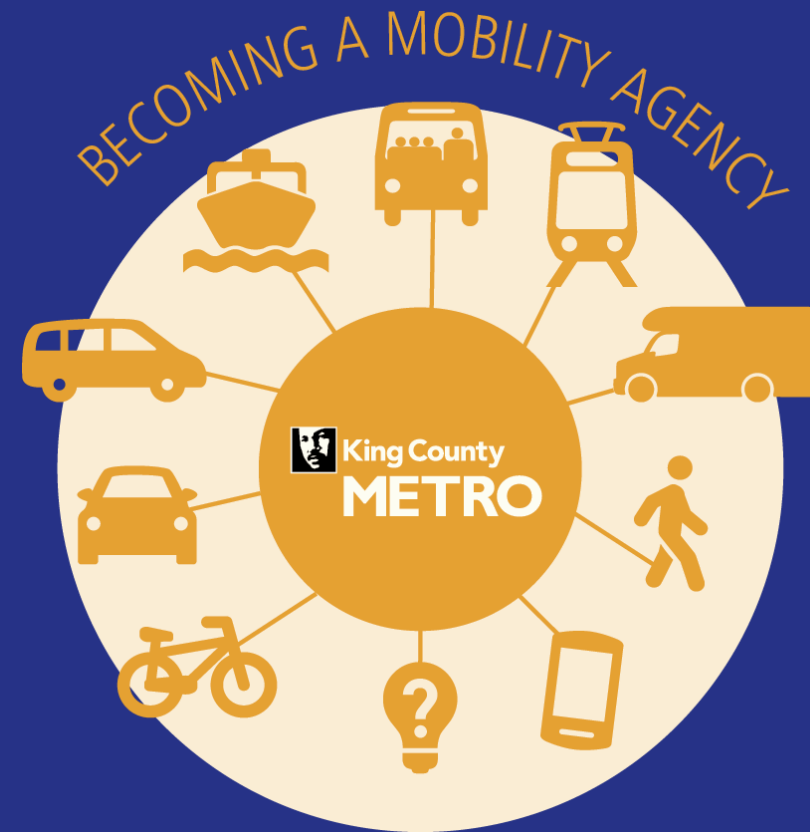


Progress on RapidRide K & R Lines

Regional Transit Committee

April 20, 2022



What is RapidRide?



Better service for more people



Sustainability



Better access



Speed and reliability



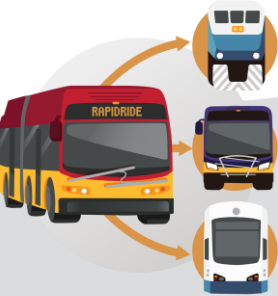
Frequent and reliable service



Easy to board



Bus station upgrades



Connections to transit



What is RapidRide?

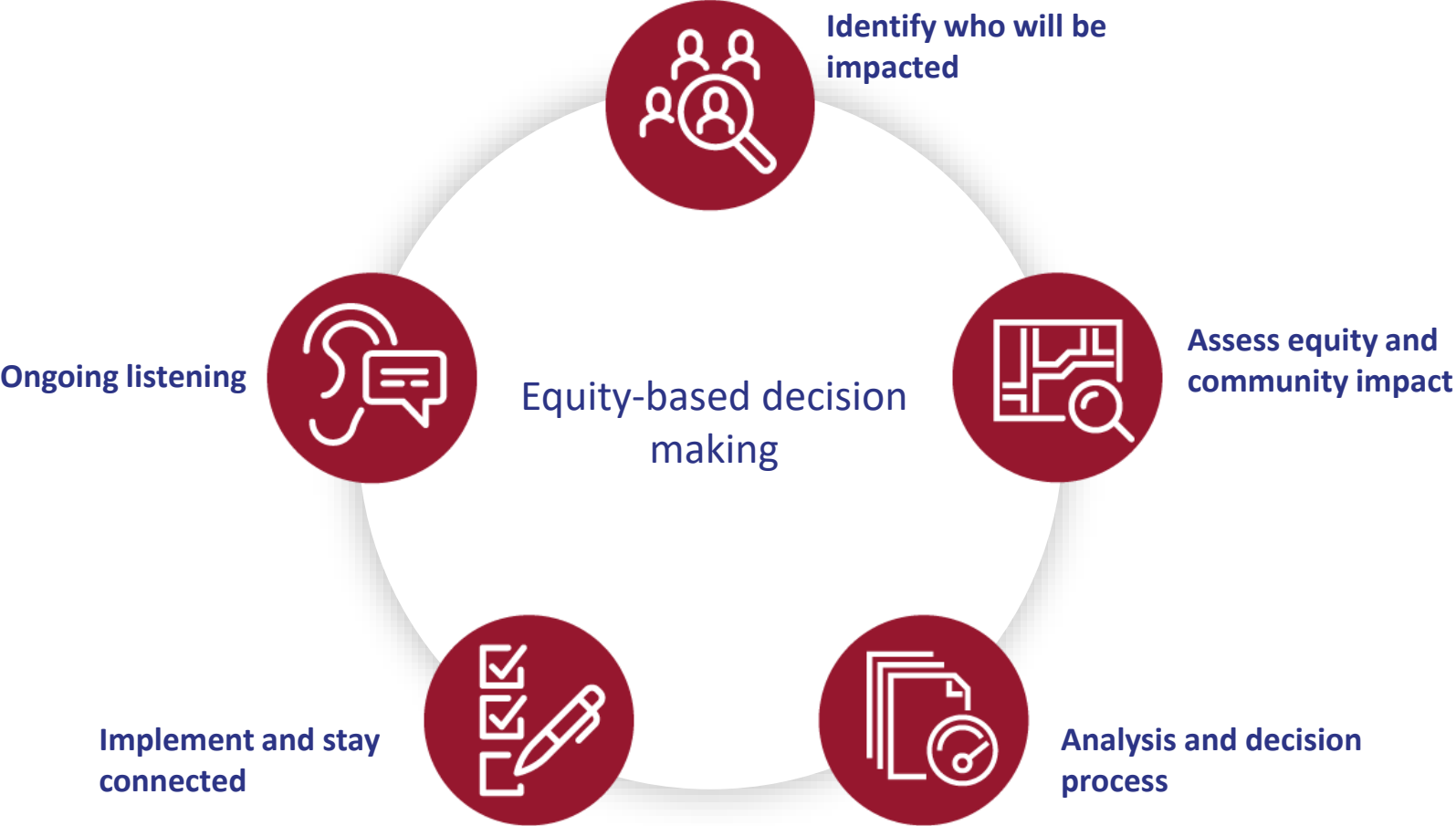
- Currently Metro operates the A-F Lines
- Prior to the pandemic these lines provided more than 60,000 daily trips.
- During the pandemic they have been critical transportation connections for those that need to travel
- All RapidRide lines have seen a high levels of ridership resilience



Policy alignment

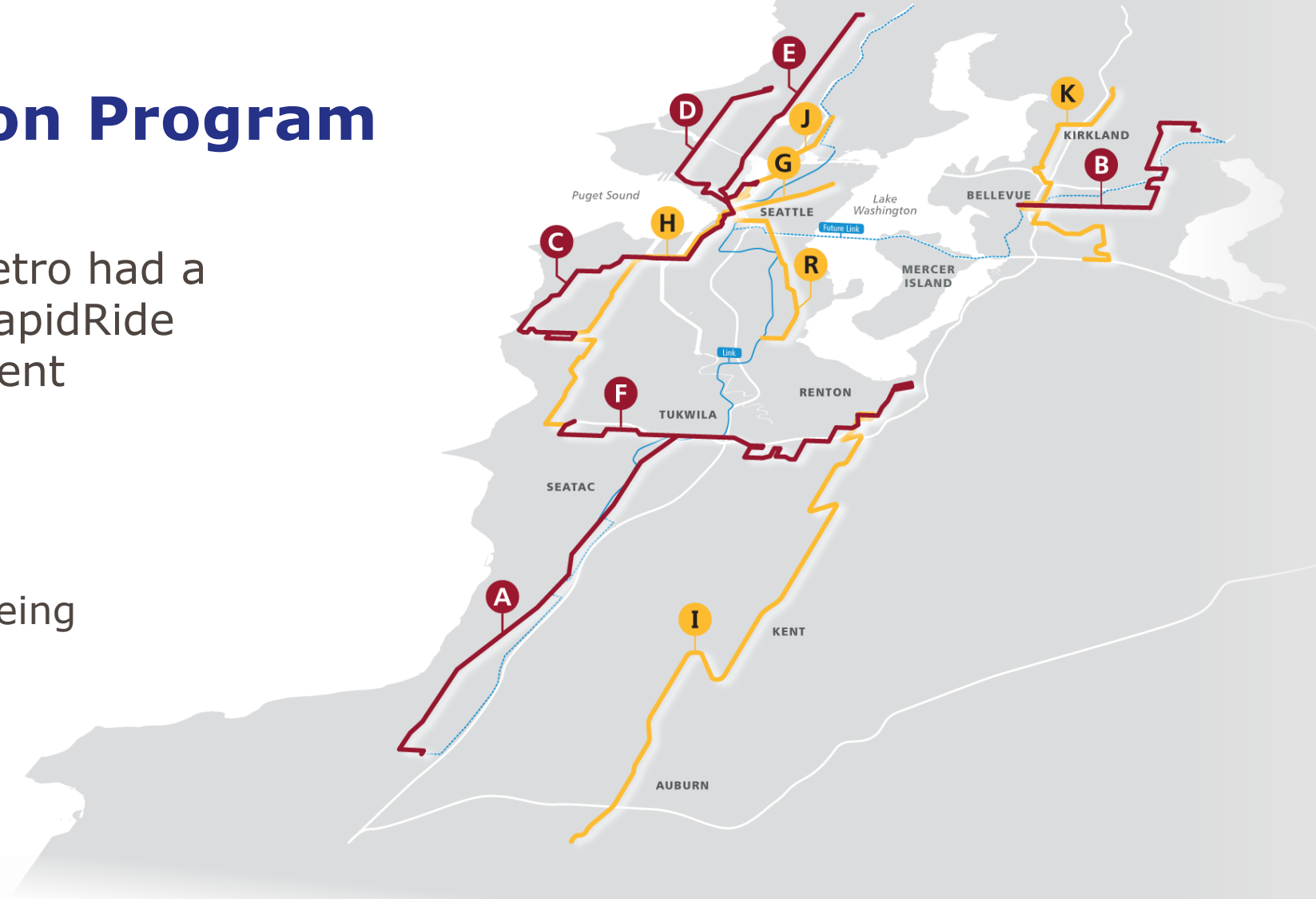
- **Strategic Plan:** RapidRide expansion supports the goal to provide fast, reliable, and integrated mobility services.
- **Metro Connects:** K Line and R Line are prioritized to be in operation by the time of the Interim Network.
- **2020 Strategic Climate Action Plan:** RapidRide expansion supports commitment to reduce vehicle miles traveled for car trips and increase transit ridership by providing sustained and increased transit frequency.

Incorporating equity in design



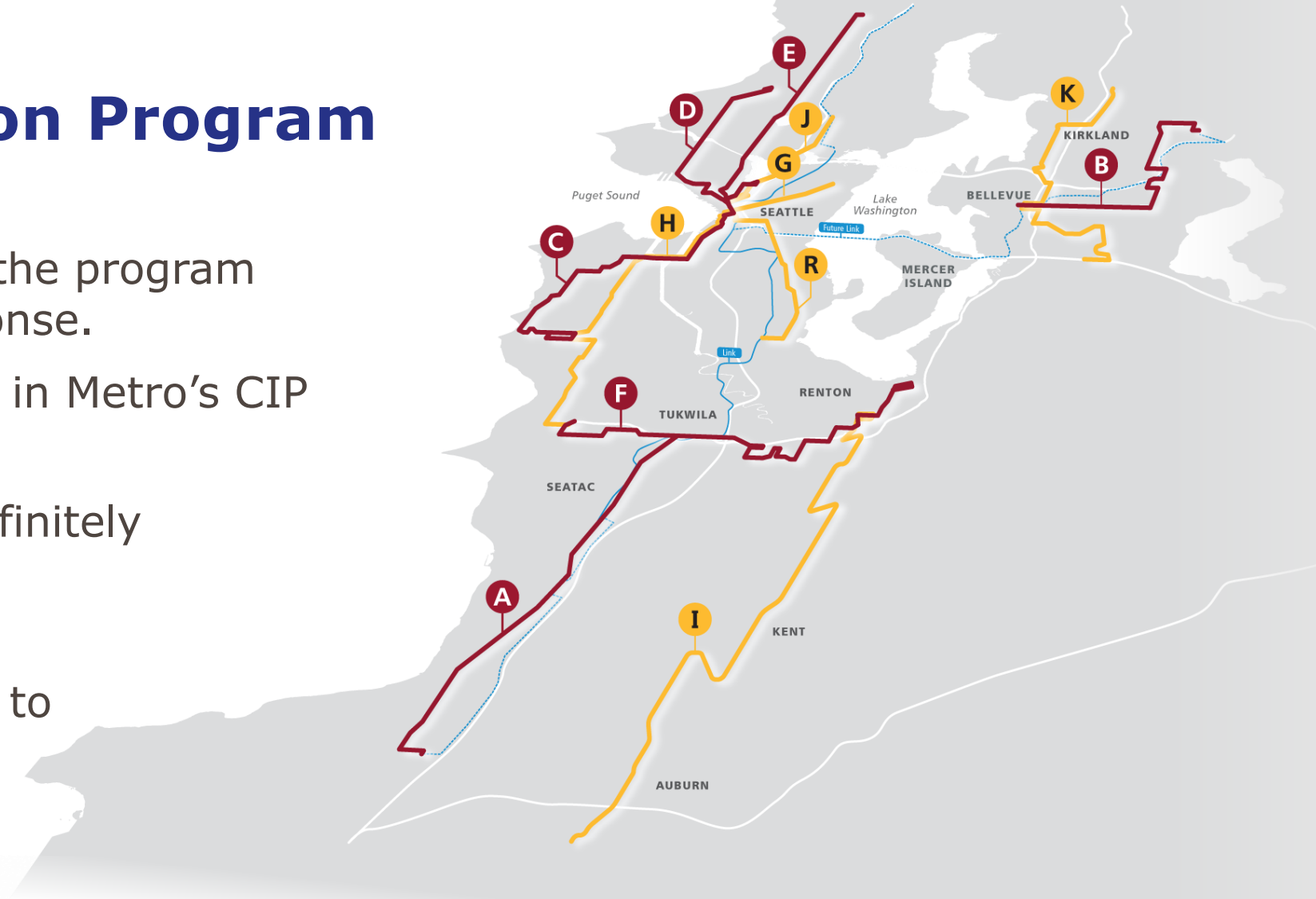
RapidRide Expansion Program

- Prior to the pandemic Metro had a goal of opening 7 new RapidRide Lines as part of this current Expansion Program
- 6 Lines were identified
 - G, H, I, J, K, & R
 - Seventh line was still being determined



RapidRide Expansion Program

- Covid-19 occurred, and the program was scaled back in response.
- 4 Lines were maintained in Metro's CIP
 - G, H, I, J
- 2 named lines were indefinitely paused
 - K, R
- Seventh line was moved to the next phase of expansion



K and R Lines

- Lines paused due to budget impacts of Covid-19
- R Line was further along in planning than the K Line when they were paused
- Transit Proviso P1 instructed Metro continue to study the K Line and advance its planning work as feasible



Help us plan future RapidRide service in Bellevue and Kirkland

King County Metro is developing RapidRide K Line to serve the fast-growing communities between Totem Lake, downtown Kirkland and Bellevue, and Factoria. RapidRide K Line will start in 2025, but we want to learn about transit needs and priorities now.

What we want to make decisions about:

- route and station locations
- dedicated bus lanes, added crosswalks, that improve bus speed and reliability and reduce travel in the area
- how to improve access to transit by making it easier to get to—or wait for—the bus.

How you can be involved:

- We're hosting public presentations in your area. Stop by to share feedback. For a full list of events, visit metro/kline.
- We'll post updates on the project website at metro/kline.

Take our survey to help Metro plan the RapidRide K Line route.

Learn more and comment online before November 26 at: kingcounty.gov/metro/kline

Questions? Contact
Robyn Austin
RapidRide Communications and Engagement Manager
206-263-9768 | rapidride@kingcounty.gov
Para obtener más información, llame 206-553-3000
欲了解更多信息，請致電 206-553-3000

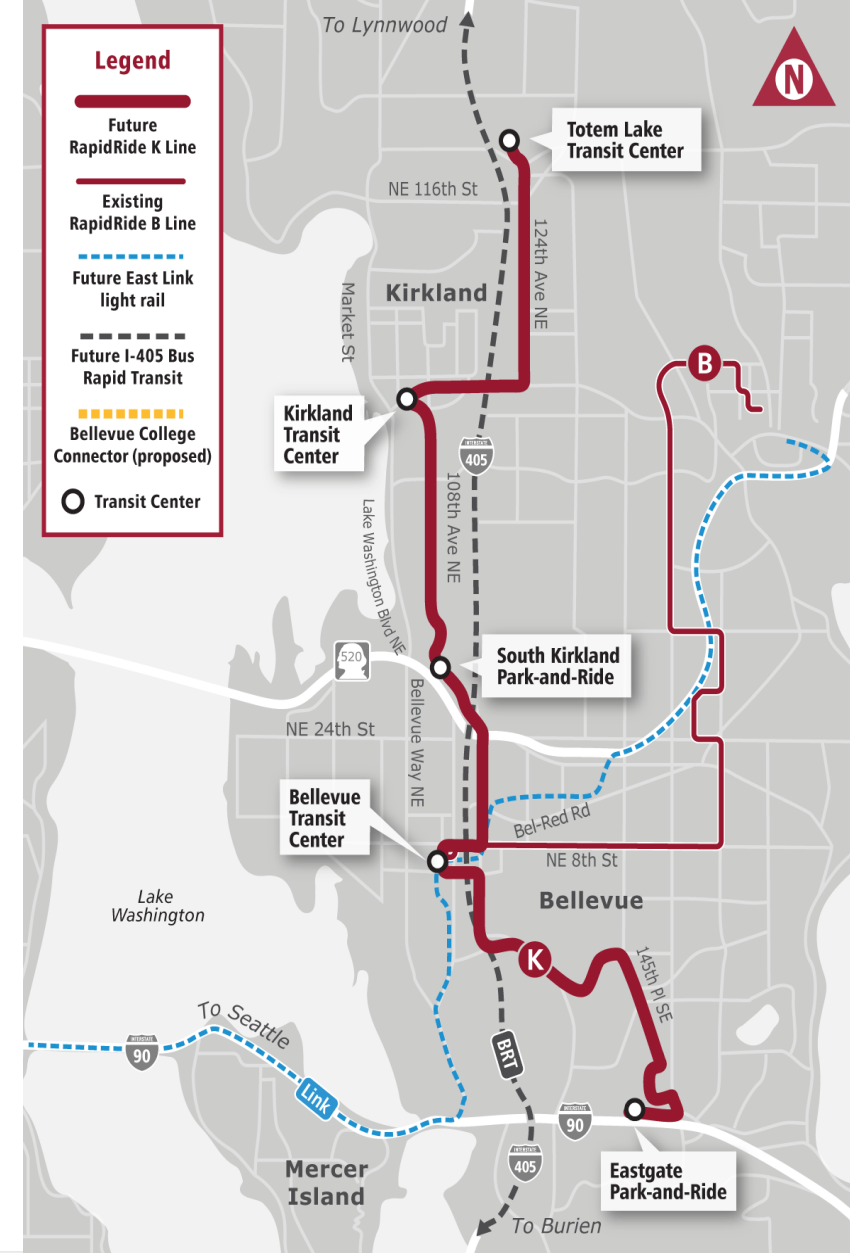
King County METRO

King County Metro en busca de la opinión de la comunidad sobre la futura línea RapidRide R en Rainier Valley

Wed Feb 26th 2020 3:43pm · **NOTICIAS**

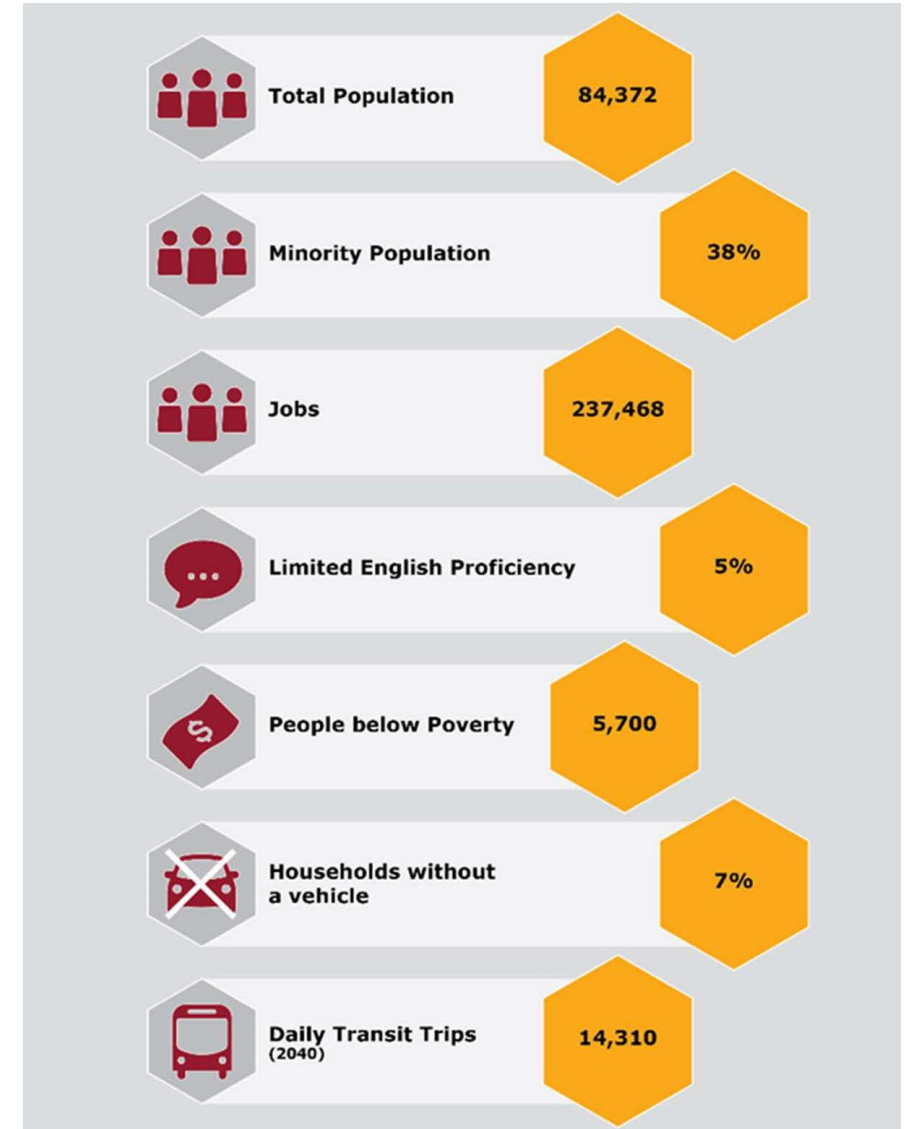
K Line

- Serves the fast-growing communities between Kirkland and Bellevue
- Connects riders to other major transit routes in the area, such as the Link light rail, I-405 bus rapid transit, and RapidRide B Line
- Further studied per Transit Proviso P1 (RapidRide Restart Report)



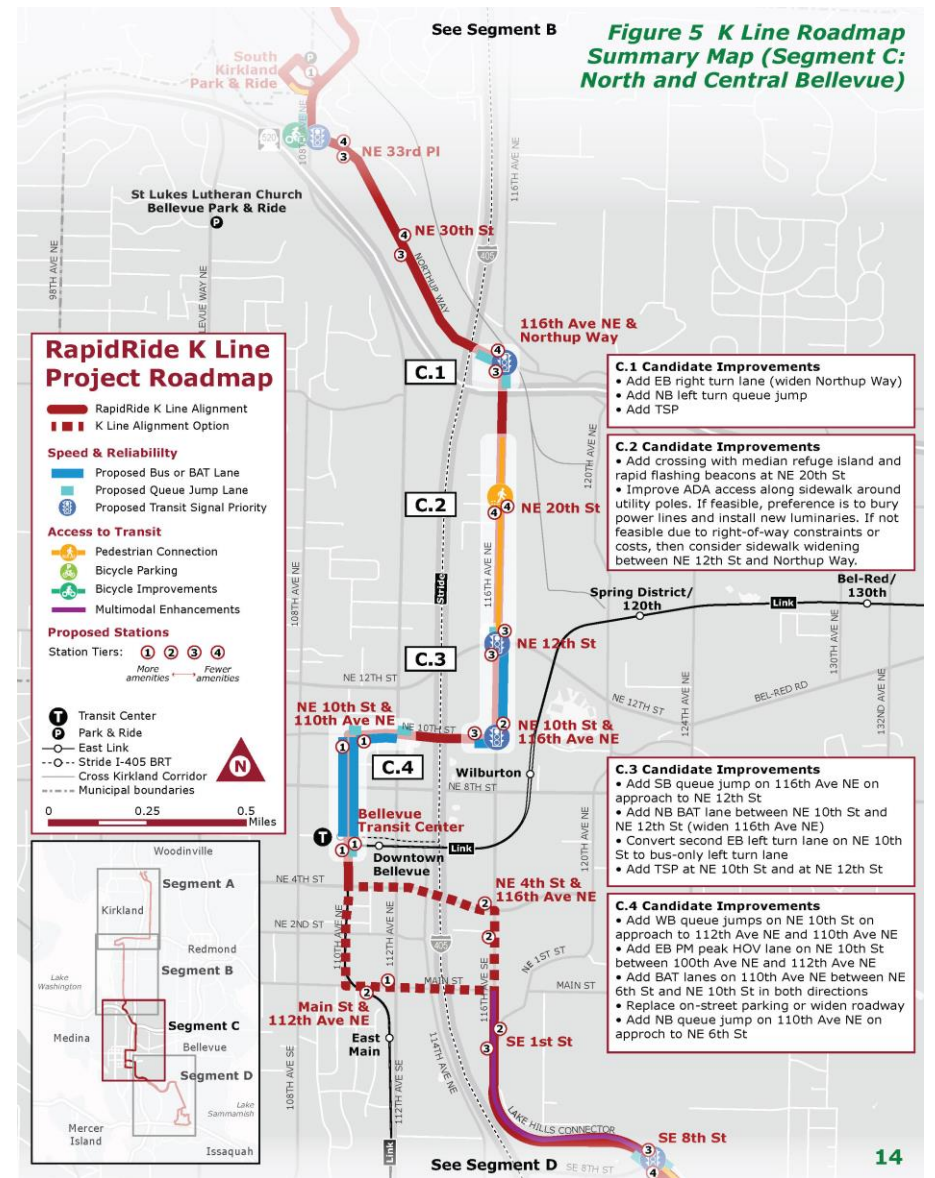
K Line

- What is the K Line trying to accomplish
 - Connect communities into the High-Capacity Transit Network (Link, Stride, RapidRide)
 - Provide a fast and reliable all-day connection between Downtown Kirkland and Downtown Bellevue
 - Provide better connections from the Totem Lake and Eastgate areas to Bellevue and Kirkland



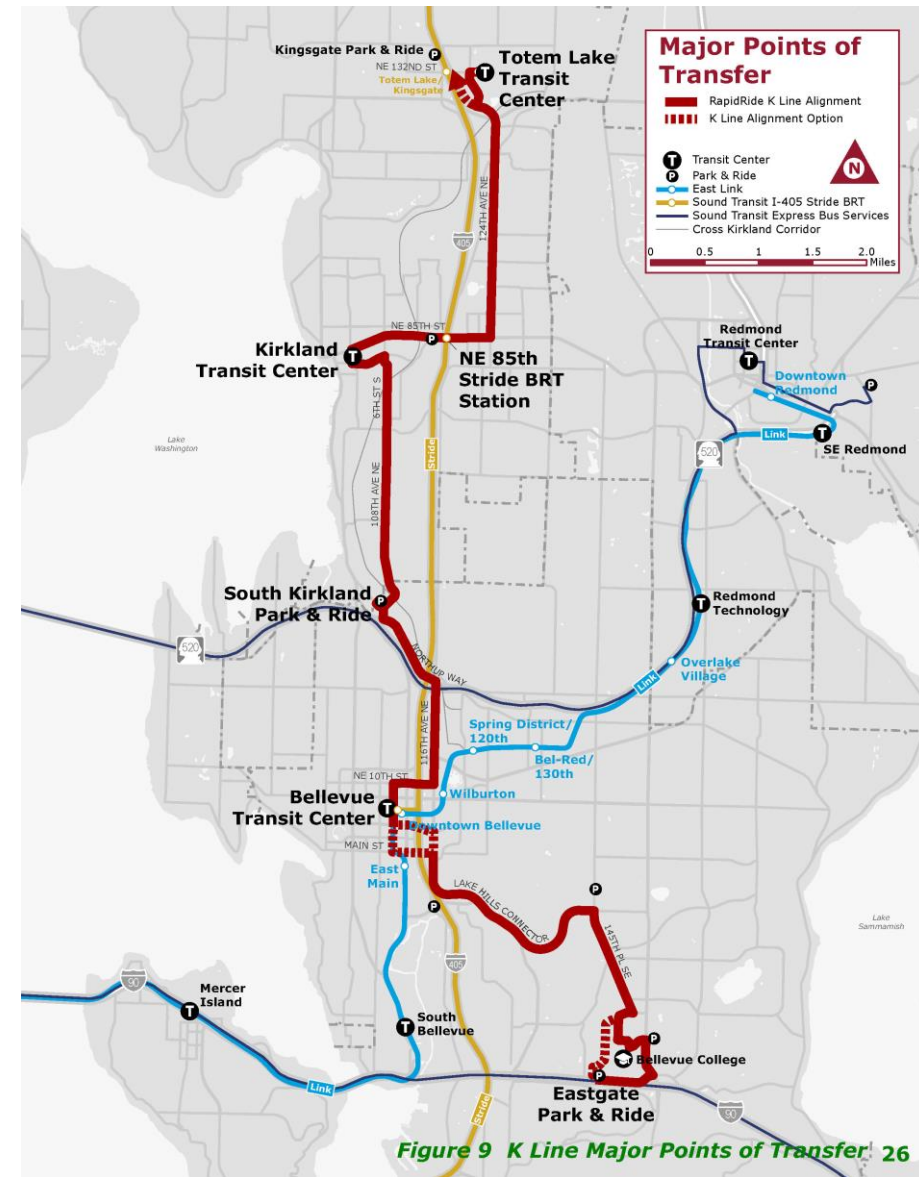
K Line

- Since the K line was paused Metro has advanced planning
 - Identification of potential roadway projects
 - Future station location identification
 - Future compatibility and transit integration planning



K Line

- What are the challenges
 - Right of way is a changing landscape
 - Pace of development and land use changes
 - Timeline uncertainty
 - Federal funding and partnership timelines



R Line

- Provides more reliable service between Downtown Seattle, Chinatown-International District, Mount Baker, Columbia City, Hillman City, Rainier Valley, and Rainier Beach
- Upgrading Route 7, served 11,000 daily riders prior to the pandemic
- Brings better service to historically underserved communities



R Line

- What is the R Line trying to accomplish:
 - Faster and more reliable
 - Design within the context of its existing ridership and the communities it serves
 - Provide a connection to Link at Rainier Beach Station
 - Connection to East Link at Judkin's park
 - Promote the City's ongoing effort to make Rainier Avenue safer and easier to connect to for pedestrians and cyclists



RAPIDRIDE
You're Invited!

R
COMING IN
2024

RapidRide is coming to Rainier Valley

King County Metro is bringing RapidRide to the Rainier Valley! Starting in late 2024, the new RapidRide R Line will serve the current users of Route 7 with an improved, more reliable bus service.

We want to hear from you! Provide input that could help:

- inform bus station locations
- improve bus frequency and reliability
- provide better connections to all transit in the area
- improve bus station access and safety

Join us at an open house to learn more!
All open houses will include refreshments and an activity area for kids.

Thursday, February 27 6–8 p.m.	Tuesday, March 3 6–8 p.m.	Thursday, March 5 5:30–7:30 p.m.
Hillman City Collaboratory 5623 Rainier Avenue S. Seattle, WA 98118 Interpretación disponible en español	Dunlap Elementary School 4525 S. Cloverdale Street Seattle, WA 98118 Interpretación disponible en español Tarjumaad Af-soomaali ayaa lagu heli karaa	Hirabayashi Place 442 S. Main Street Seattle, WA 98104 Có hỗ trợ phiên dịch tiếng Việt 提供中文翻译服务 提供粵語口譯服務

King County METRO
Moving forward together

R Line

- Since the R line was paused, Metro has continued to work with the City of Seattle, Sound Transit and within Metro itself.
 - Ensure forward compatibility as the corridor's transportation system evolves
 - Continue to better understand the community's desires and goals for the R Line
 - Continue to understand future grant and federal funding opportunities



R Line

- What are the challenges
 - Competing priorities within the right of way
 - How to integrate the R Line into Metro's Trolley Bus system
 - How best to serve the Prentice Loop which Route 7 provides coverage for presently
 - Timeline uncertainty
 - Federal funding and partnership timelines



Next Steps

- Metro submitted its RapidRide Restart Report
- Metro Connects Update identified the R and K Lines as the next two priorities for Metro's RapidRide Program
 - RapidRide Prioritization Plan in 2023
- 2023-2024 Budget Development
- Staying aware of federal funding opportunities and partnering opportunities for the K and R Lines



Working together as partners

**Coordinate
with cities and
agency
partners**



**Engage with
local
communities**



**Support transit
connections
and access
improvements**



**Design and
build capital
facilities,
dedicated
right-of-way**



Closing and Questions