



King County

Metropolitan King County Council Law, Justice and Human Services Committee

STAFF REPORT

AGENDA ITEM: 8 **DATE:** September 4, 2008
BRIEFING 2008-B0192 **PREPARED BY:** David Randall

SUBJECT: King County Criminal Justice System Performance Management and Accountability

SUMMARY: King County began a multi-year effort to establish performance measures for county departments and agencies. Today, the committee will be briefed on criminal justice system performance management.

Since 2002, the Council has annually adopted legislation promoting that performance management and accountability throughout King County government. The Council has led a collaborative effort among representatives from all separately elected offices to encourage unified and sustained implementation of a countywide performance management and accountability system.

Earlier this year, the Council adopted legislation creating a performance management and accountability system.

The adopted vision for the performance management system is:

- There is consensus among county leadership that the strategic planning, performance measurement and management system effectively aligns collaborative efforts towards common county goals while respecting the needs of individual agencies to pursue organization goals, and separately elected officials' obligation to deliver on their commitments to the citizenry.
- Building on current efforts and with input from citizens, elected leaders and policy-makers develop countywide prioritized goals and align services to those goals.
- Performance measures inform and are linked to policy and resource allocation decisions.
- County publicly reports to citizens how well it is meeting its performance goals and engages the citizenry in the countywide performance management program.
- Performance measurement is used by managers for strategic planning, program evaluation, operational improvements, and budgeting.

- Performance measures are not used in a punitive manner but are used to support organizational learning in collaboration with the workforce.

The performance management reporting requirements are as follows:

- An annual countywide performance report. Currently, the county executive reports on performance for the executive branch (Annual Indicators and Measures (AIMS High) Report). This requirement would expand the report to include performance for all branches of county government. Elected officials shall be involved in the annual reporting process.
- Countywide strategic plan (every five years). This plan would include a vision for county government and prioritized goals for all three branches of county government. Elected officials shall be involved in the prioritization process.
- Agency and executive department/office strategic plans (every five years).
- Requires all agencies and executive departments/offices to transmit annual business plans to Council as part of the budget process beginning with the 2009 budget process.

ATTENDEES:

Cheryle Broom, King County Auditor

Ron Perry, Deputy King County Auditor

Michael Jacobson, Performance Management Director, Executive's Office

ATTACHMENTS:

1. Criminal Justice Initiatives Status Update, dated July 2008
2. King County Department of Adult and Juvenile Detention, Detention and Alternatives Report, dated July 2008
3. King County Superior Court, Second Quarter 2008 Quarterly Statistical Report
4. King County Superior Court, 2007 Annual Statistical Report



CRIMINAL JUSTICE INITIATIVES STATUS UPDATE
JULY 2008

Following is a status report on the Criminal Justice (CJ) Continuum of Care Initiatives that provides treatment and support services for indigent and low income adult offender-clients in King County with mental health, substance abuse, or co-occurring disorders who may also be homeless. Program data are compiled through June 30, 2008 unless noted otherwise.

CJ Initiatives programs, services and other activities include the following:

- Jail-based Chemical Dependency (CD) Screening and Assessment, and Treatment Placement:** CD screening, assessment, and treatment placement services for inmates of the King County Correctional Facility (KCCF) are provided by Kathy Johnson, affiliated with Therapeutic Health Services (THS). Identical services for inmates at the Norm Maleng Regional Justice Center (RJC) are provided by Chris Mitchell, King County CJ Initiatives. CD assessment and treatment placement services for inmates of the municipal jails in King County are provided by both Kathy and Chris. Alcoholism and Drug Addiction Treatment and Support Act (ADATSA) assessment and benefit data are depicted in the next section.
- Assistance with Applying for Entitlements and other Publicly Funded Benefits:** Darlene Terry, Kevin Moe, and Peter Robinson, WA State Department of Social and Health Services (DSHS) financial services specialist staff, and their outstationed peers received a total of 7,210 combined, duplicated referrals from May 2004 through June 2008. During the period, 2,986 DSHS applications were completed for adult individuals served via the CJ Initiatives with 168 new applications processed in June 2008. Application results for the period are presented in the following table.

May 2004 through June 2008	Applications Processed		Benefit Approved		Pending (as of 6/30/08)		Determined Ineligible	
	No. ¹	Percent ²	No.	Percent	No.	Percent	No.	Percent
DSHS Benefit Applications								
Food Stamps	1,706	57%	1,374	81%	22	1%	310	18%
Medicaid	1,572	53%	900	57%	307	20%	365	23%
Cash Assistance	1,415	47%	754	53%	275	20%	386	27%
ADATSA	1,263	42%	408	32%	440	35%	415	33%
SSI ³	74	2%	56	76%	15	20%	3	4%

¹Represents duplicated counts; clients may apply for more than one benefit

²Represents percentage of total applications completed and processed

³Supplemental Security Income administered by the Social Security Administration

Since May 2006, 398 psychiatric evaluations have been conducted for DSHS applications as requested by Sue Clemenson and Loretta Juarez-Wagner, DSHS social workers, via contract with Sound Mental Health (SMH) for Community Center for Alternative Programs (CCAP) and jail inmate applicants. Eleven psychiatric evaluations were conducted in June 2008.

- **Housing Voucher and Case Management Program:** King County Drug Diversion Court, King County District Mental Health Court, and Seattle Municipal Mental Health Court referred 833 clients combined to the Housing Voucher and Case Management Program, brokered by SMH, since June 2003. Additionally, 87 referrals were made by the CJ liaison at CCAP and placed in the program since July 2004. Nine clients were placed in temporary housing in June 2008. The active caseload on June 30th was 56 out of 920 combined referrals. Placement data by year and referral source are depicted in the following table:

Housing Placements by Referral Source	CCAP		King County Drug Diversion Court		King County District Mental Health Court		Seattle Muni Mental Health Court		TOTAL	
	No.	Percent	No.	Percent	No.	Percent	No.	Percent	No.	Percent
2003 ¹	n/a	0%	69	55%	21	17%	35	28%	125	100%
2004	11	5%	179	79%	16	7%	20	9%	226	100%
2005	12	7%	124	69%	16	9%	28	15%	180	100%
2006	15	9%	96	60%	20	12%	31	19%	162	100%
2007	31	20%	74	48%	28	18%	21	14%	154	100%
2008	18	27%	39	55%	6	5%	10	13%	73	100%
TOTAL	87	9%	581	63%	107	12%	145	16%	920	100%

¹Initial housing referrals and placements began in May 2003.

Disposition of the 864 non-active cases is depicted below:

- 31% obtained long-term/permanent housing
- 15% were discharged due to behavioral problems or rule violations
- 15% left the program and staff lost contact with them
- 14% were discharged for multiple positive drug urinalysis test results
- 5% were transferred to inpatient treatment (eligible to return upon completion)
- 5% were discharged due to bench warrant
- 2% were discharged because their benefit period (six months) expired
- 13% were discharged for other reasons

- **CD Treatment and Alcohol/Drug Education Classes at CCAP:** Community Psychiatric Clinic (CPC) and SMH (as of April 2, 2007) admitted 722 clients into CD treatment at CCAP from April 2004 through June 2008, with 21 new clients admitted in June. A wait list was implemented until additional treatment program capacity was added in May 2008 via a fourth intensive outpatient (IOP) treatment caseload. CD treatment capacity at CCAP is 60 at

present, 48 IOP and 12 phase two outpatient treatment slots. Treatment admission data are broken down by year as follows (2007 data revised since last report):

Chemical Dependency Treatment Admissions at CCAP					
2004	2005	2006	2007	2008 ¹	TOTAL
55	129	162	245	131	722

¹2008 data are through June 30th only.

SMH also provides alcohol/drug education classes for general population clients who are court-ordered to the CCAP enhanced program.

- **Medical/Chemical Dependency Release Planning Services via Jail Health Services:** Jail Health Services Release Planners will be working with Needle Exchange staff to help distribute vouchers for new methadone treatment resources resulting from King County's Mental Illness and Drug Dependency (MIDD) sales tax, when the final MIDD plans are approved by the King County Council. Release Planners worked with 248 inmate-patients from January 1st through June 30, 2008.
- **Mental Health Release/Discharge Planning via CJ Liaisons Provided by SMH:** Cassie Rush and Shannon Drake, KCCF, and Mary Murphy, CCAP, and their predecessors received 6,428 duplicated referrals from September 2003 through June 2008 with 81 new referrals in June. Total referrals by year and venue are presented in the following table.

CJ Liaison Incoming Referrals	KCCF		RJC		CCAP		TOTAL	
	No.	Percent	No.	Percent	No.	Percent	No.	Percent
2003 ¹	103	43%	89	37%	48	20%	240	100%
2004	726	43%	623	37%	335	20%	1,684	100%
2005	585	36%	536	33%	499	31%	1,620	100%
2006 ²	468	42%	307	27%	353	31%	1,128	100%
2007	597	48%	331	27%	312	25%	1,240	100%
2008	313	61%	n/a ³	0%	203	39%	516	100%
TOTAL	2,792	44%	1,886	29%	1,750	27%	6,428	100%

¹Criminal justice liaisons started accepting referrals in September 2003.

²The number of referrals declined from previous years at KCCF and RJC due to emphasis on the Jail Transition Services/Co-occurring Disorders Program, which entails more coordination and staff time per case.

³CJ liaison services were significantly reduced at the RJC in December 2007 due to budget constraints; see the Jail Transition Services section toward the end of report for data on CJ liaison services at the RJC since then.

Types of linkages or “outgoing referrals” made by the CJ liaisons for the period September 2003 through June 2008 are presented in the following table. Please note that CJ liaison services were significantly reduced at the RJC in late 2007 and, effective in December of that

year, liaison activities at the RJC are restricted to the Jail Transition Services (JTS) Program (see section near end of report for JTS Program data for the RJC since December 2007).

September 2003 – June 2008	KCCF (n=2,792)		RJC (n=1,886)		CCAP (n=1,750)	
CJ Liaison Outgoing Referrals	No.	Percent ¹	No.	Percent ¹	No.	Percent ¹
DSHS/ADATSA ²	1,545	55%	1,293	69%	833	48%
Mental health services	605	22%	256	14%	1,124	64%
Chemical dependency treatment ³	107	4%	84	4%	137	8%
Jail Transition Services Program ⁴	271	10%	108	6%	n/a	0%
Housing	229	8%	344	18%	623	36%
Seattle Muni Court Resource Ctr	345	12%	n/a	0%	n/a	0%
Specialty court ⁵	312	11%	69	4%	n/a	0%
Jail Health Services	91	3%	54	3%	n/a	0%
Employment/Vocational	19	1%	16	1%	114	7%
Reentry Case Management	68	2%	37	2%	15	1%
Legal	866	31%	264	14%	n/a	0%
Veterans programs	32	1%	7	<1%	6	<1%
Other	0	0%	3	<1%	59	3%

¹Percentages sum to greater than 100% due to more than one referral per client, and some clients are not referred

²DSHS/ADATSA: Publicly funded benefits via the Washington State Department of Social and Health Services

³Nearly all chemical dependency treatment referrals are made by on-site CD professionals effective September 2005

⁴Jail Transition Services (JTS) Program: Referrals to the JTS/co-occurring disorders integrated treatment program began in November 2005; this program includes temporary housing with assistance in finding permanent housing.

⁵Specialty Court: Drug Diversion Court, King County District Mental Health Court, and Seattle Municipal Mental Health Court

- **Reentry Case Management Services:** David Stewart and Stacy Lenny, SMH, and their predecessors provided reentry case management services since April 2007. Reentry services are targeted at Community Corrections participants and King County Jail exiters who are transitioning to treatment and other services in the community. SMH received 212 referrals and conducted 151 intakes into the program through June 2008. The number of referrals and intakes declined significantly in June as both reentry case manager positions were vacant for a short period. Rental assistance is available to clients enrolled in the program who have existing rental housing but are at risk of losing it due to incarceration or involvement with the criminal justice system. Over \$44,750 in rental assistance has been provided to 33 program participants through June 2008, averaging \$1,356 per recipient.
- **Co-occurring Disorders (COD) Integrated Treatment Programs:** Since August 2003, 407 individuals were referred from the specialty courts and admitted to the “IMPACT” program

at CPC and “Project START” at SMH through June 2008. There were two new admissions in June. The combined active caseload on June 30th was 63. Placement data by year and specialty court of referral are depicted in the following table.

COD Treatment Placements by Referral Source	King County Drug Diversion Court		King County District Mental Health Court		Seattle Muni Mental Health Court		TOTAL	
	No.	Percent	No.	Percent	No.	Percent	No.	Percent
2003 ¹	20	43%	10	21%	17	36%	47	100%
2004	27	44%	10	18%	24	38%	61	100%
2005	61	63%	17	18%	18	19%	96	100%
2006	36	47%	21	28%	19	25%	76	100%
2007	32	37%	34	40%	20	23%	86	100%
2008	19	46%	13	32%	9	22%	41	100%
TOTAL	195	48%	105	26%	107	26%	407	100%

¹Initial COD referrals and placements were made in August 2003.

Related Program Funded by the WA State Criminal Justice Treatment Account

- **Transitional Recovery Program (TRP) at the RJC:** Pioneer Human Services has operated TRP, a CD treatment program for inmates referred by Drug Diversion Court, since February 2005. Through July 30, 2008, 467 participants (316 men and 151 women) have completed the 60-day program at the RJC. The combined active caseload on July 30th was 29, 24 men and 5 women, with 5 inmates awaiting intake or transfer to the treatment unit.

Related Program Funded by WA State DSHS via SHB1290 Jail Services Funds

- **Jail Transition Services:** During the period November 2005 through June 2008, 247 individuals were directly linked to the IMPACT and Project START outpatient COD treatment programs at CPC and SMH, respectively, upon release from KCCF, RJC, or a city jail (Auburn, Enumclaw, Issaquah, Kent, Kirkland, and Renton). Referrals from KCCF are linked to the IMPACT program in Seattle. Other jail referrals are linked to Project START in Tukwila. Referrals from CCAP (no longer eligible; only 12 CCAP referrals were admitted) were transferred for continuing services at Project START-Capitol Hill (Seattle) until their 12-month benefit expires. The combined active caseload on June 30th was 57.

Jennifer Geier, former SMH criminal justice liaison in South and East King County, and her predecessor received 340 referrals from January 2006 through June 2008. This position is responsible for screening and assessing city jail and RJC inmates for the Jail Transition Services program. Screenings by city jail are depicted in the following table (some data corrected from previous report).

Jail Transition Services Screenings in South and East King County	2006		2007		2008		TOTAL	
	No.	Percent	No.	Percent	No.	Percent	No.	Percent
Auburn City Jail	41	37%	77	48%	26	38%	144	42%
Enumclaw City Jail	11	10%	7	4%	3	4%	21	6%
Issaquah City Jail	6	5%	12	7%	4	6%	22	6%
Kent City Jail	51	45%	57	36%	13	20%	121	36%
Kirkland City Jail	0	0%	1	1%	0	0%	1	1%
Renton City Jail	3	3%	5	3%	3	4%	11	3%
RJC ¹	n/a	0%	1	1%	19	28%	20	6%
TOTAL	112	100%	160	100%	68	100%	340	100%

¹Effective December 2007, Jail Transition Services at the RJC are covered by the CJ liaison located in South and East King County; see the Mental Health Release/Discharge Planning section above for RJC data ("outgoing referrals") pertaining to the program prior to December 2007.

From November 2005 through June 2008, up to a seven-day supply of psychiatric medications paid by Jail Services funds was issued to 1,269 persons upon release from KCCF, RJC, and the Kent Municipal Jail.

Related Program Funded by SHB2163 Homeless Housing and Services Funds

- **Begin at Home-CJI Program:** Plymouth Housing Group has served eligible clients in need of permanent supportive housing via their *Begin at Home* program since January 2007. A total of 25 units are earmarked (as they become available) for eligible clients referred from the Housing Voucher and Case Management Program (1/3), the IMPACT Program (1/3), and Project START (1/3). As of July 29, 2008, 23 clients have been approved for placement by the Seattle Housing Authority and have moved into their new home. To date, there have been no move-outs or evictions of CJ Initiatives tenants.

Related Program Funded by WA State CTED, King Co. Housing Authority, Seattle Foundation, Seattle Housing Authority, United Way of King County, and Veterans & Human Services Levy

- **Forensic Assertive Community Treatment (FACT) Program:** Sound Mental Health provides intensive FACT services targeted at adults with severe and persistent mental illness, also likely to be homeless and have a co-occurring substance abuse disorder, and who are the highest utilizers of the King County Jail and/or municipal jails in King County. The program, which includes housing, was implemented in January 2008. The FACT team has enrolled 17 participants as of June 30th and is actively engaging another 14 individuals. Program capacity is limited to 50 participants.

**King County Department of
Adult and Juvenile Detention**

Detention and Alternatives Report

July 2008

King County Department of Adult and Juvenile Detention
Detention and Alternatives Report
For the Month of July 2008

Annual ADP

Year	Adult ADP	Juvenile ADP
1988	1,665	58
1989	1,864	70
1990	1,721	104
1991	1,728	108
1992	1,929	97
1993	1,961	120
1994	2,126	149
1995	2,309	159
1996	2,332	183
1997	2,476	184
1998	2,746	191
1999	2,831	165
2000	2,959	148
2001	2,906	128
2002	2,648	118
2003	2,392	119
2004	2,460	105
2005	2,600	109
2006	2,665	105
2007	2,726	95
2008	2,615	96

Definitions

- Average Daily Population (ADP): Mean number of inmates in the custodial populations on a daily basis. Total number of inmate days divided by the number of days in the time- period.

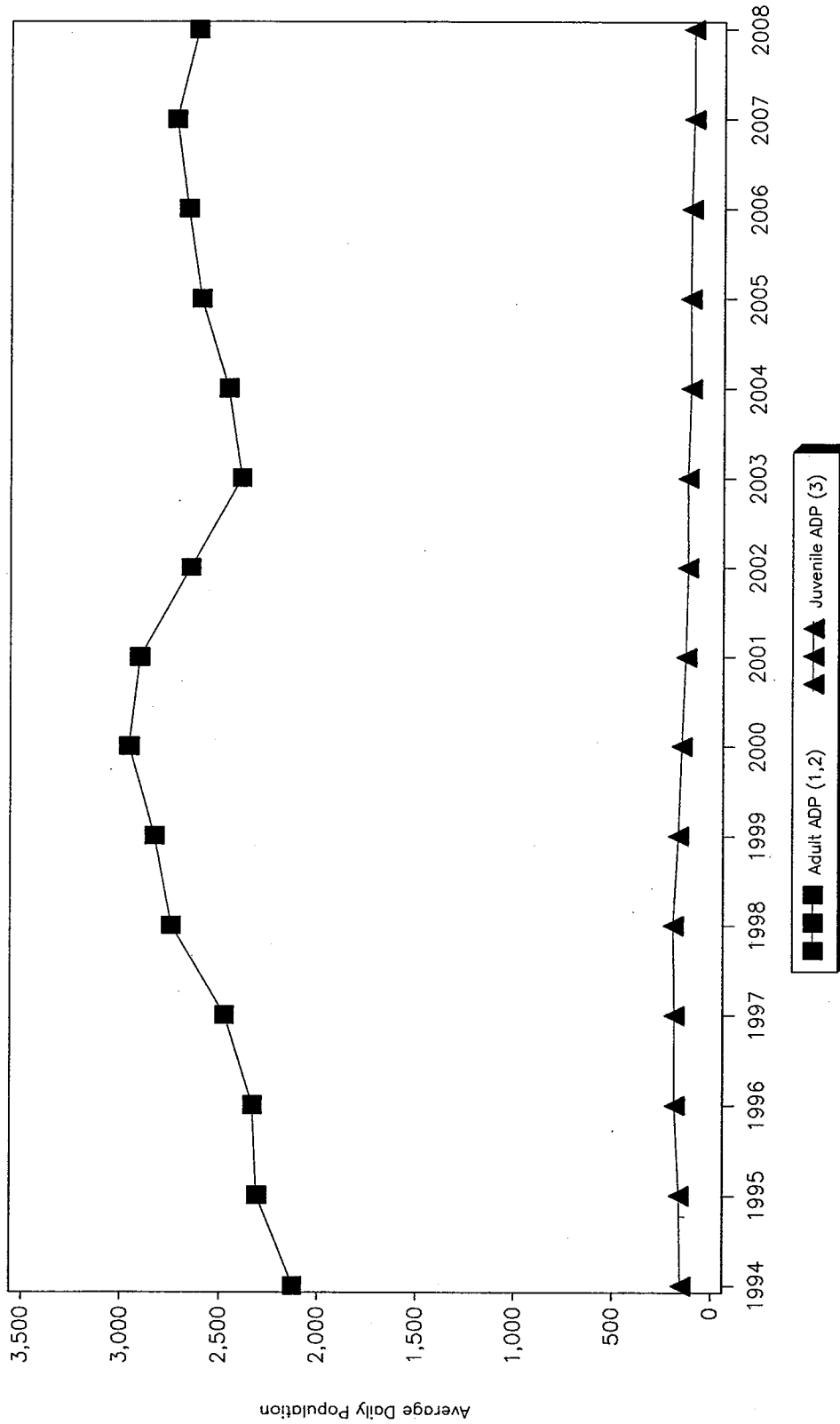
Notes:

- The adult population figures include secure detention, Electronic Home Detention (EHD), and Work Education Release (WER) population numbers.
- The juvenile population numbers are strictly secure detention counts.
- Changes may occur between months because of corrections to the database.
- 2008 is year to date

King County Department of Adult and Juvenile Detention

Detention and Alternatives Report
For the Month of July 2008

Annual ADP



1-The adult population figures include secure detention, Electronic Home Detention (EHD), and Work Education Release (WER) population numbers.
2-Changes may occur between months because of corrections to the database.
3-The juvenile population numbers are strictly secure detention counts.

King County Department of Adult and Juvenile Detention
Detention and Alternatives Report
For the Month of July 2008

Adult Custodial Population

	Average Daily Population		Bookings		Booking Length of Stay (days)	
	2007	2008	2007	2008	2007	2008
January	2,691	2,622	4,888	4,266	19.46	19.44
February	2,746	2,647	4,331	3,975	17.87	21.62
March	2,746	2,626	4,591	4,054	19.68	19.91
April	2,796	2,647	4,740	4,136	18.25	19.97
May	2,807	2,632	4,826	4,192	18.94	18.28
June	2,798	2,579	4,713	4,039	18.28	22.70
July	2,733	2,553	4,662	4,278	18.27	17.95
August	2,708	-	4,836	-	17.14	-
September	2,760	-	4,253	-	17.35	-
October	2,698	-	4,252	-	20.23	-
November	2,671	-	3,892	-	20.71	-
December	2,566	-	3,916	-	20.30	-
YTD Average	2,726	2,616	4,715	4,135	18.67	19.84

Definitions

- **Adult Custodial Population:** Inmates who are confined in the King County Correctional Facility or Regional Justice Center, and partially confined in Work Education Release or Electronic Home Detention.
- **Average Daily Population (ADP):** Mean number of inmates in the custodial populations on a daily basis. Total number of inmate days divided by the number of days in the time- period.
- **Booking:** The process of identifying, fingerprinting and gathering information about an arrested person who is being admitted to jail. Bookings are event based versus person based. In other words, there were 56,000 separate booking events in 2001 for 38,000 separate person. Some people are booked more than one time during the reporting period.
- **Average Length of Stay (ALOS):** The average number of days a person spends in a program or jail based upon release month.

King County Department of Adult and Juvenile Detention
Detention and Alternatives Report
For the Month of July 2008

Adult Population by Placement

Secure										
	Average Daily Population						Number of Placements		Placement Length of Stay (days)	
	2007			2008			2007	2008	2007	2008
	KCCF	RJC	Total	KCCF	RJC	Total	Total	Total	Total	Total
January	1,372	1,070	2,442	1,355	1,025	2,381	4,663	4,261	19.73	19.33
February	1,338	1,155	2,494	1,340	1,059	2,398	4,338	3,976	18.19	21.66
March	1,338	1,172	2,510	1,307	1,054	2,361	4,589	4,054	19.97	20.12
April	1,352	1,198	2,551	1,348	1,032	2,380	4,741	4,131	18.69	20.17
May	1,351	1,191	2,542	1,300	1,071	2,372	4,810	4,188	19.30	18.47
June	1,327	1,182	2,509	1,323	1,002	2,325	4,709	4,040	18.08	22.76
July	1,323	1,126	2,449	1,312	983	2,296	4,664	4,280	18.50	18.27
August	1,350	1,098	2,447	-	-	-	4,828	-	17.29	-
September	1,350	1,142	2,492	-	-	-	4,255	-	17.24	-
October	1,343	1,082	2,424	-	-	-	4,246	-	20.41	-
November	1,334	1,078	2,412	-	-	-	3,884	-	21.00	-
December	1,291	1,024	2,315	-	-	-	3,923	-	20.50	-
YTD Average	1,338	1,126	2,465	1,316	1,032	2,348	4,473	4,133	19.07	20.08

Definitions

- Secure: Total confinement within a 24-hour detention facility in either the KCCF or RJC.
- Average Daily Population (ADP): Mean number of inmates in the custodial populations on a daily basis. Total number of inmate days divided by the number of days in the time-period.
- Number of Placements: The DAJD has traditionally reported the number of bookings as the measure of admission. A single booking covers all activity from the time of admission to the time of release from custody. For the purpose of data tracking, it was necessary to develop a new measure to track location movements within a booking. Placements are defined for only the custodial populations in Electronic Home Detention, Secure Detention and Work Education Release. A placement occurs the first time that a person enters a custodial population, but is only counted once in a booking for each of the three populations. One booking can therefore create no more than three placements. The placement is counted in the month the placement occurred, not necessarily in the month the booking occurred.
- Program Length of Stay: The total number of days during the total incarceration event that a person was placed in the various custodial locations (Secure, Work Release, Electronic Home Detention) or a specific status group with Secure Detention (Pre-Trial Felon, Pre-Trial Misdemeanant, Sentenced Felon, Sentenced Misdemeanant, State Holds, and Other). For DRC, it is the average imposed sentence length for participants who started during the month.

King County Department of Adult and Juvenile Detention
Detention and Alternatives Report
For the Month of July 2008

Adult Population by Placement

Electronic Home Detention						
	Average Daily Population		Number of Placements		Placement Length of Stay (days)	
	2007	2008	2007	2008	2007	2008
January	104	94	83	59	60.98	62.34
February	113	87	73	55	37.04	50.84
March	116	88	93	75	38.07	41.80
April	113	91	68	57	51.32	42.87
May	123	90	93	59	64.88	38.27
June	143	82	90	65	53.14	57.00
July	141	86	81	54	44.96	50.45
August	122	-	64	-	48.41	-
September	113	-	69	-	47.07	-
October	106	-	62	-	56.66	-
November	95	-	61	-	54.33	-
December	93	-	42	-	59.02	-
YTD Average	113	86	73	61	50.32	46.86

Definitions

- **Electronic Home Detention (EHD):** A program that allows offenders to be maintained under electronic surveillance within their home and work site. This program requires random drug and alcohol testing. People on EHD are considered to be in-custody.
- **Average Daily Population (ADP):** Mean number of inmates in the custodial populations on a daily basis. Total number of inmate days divided by the number of days in the time-period.
- **Number of Placements:** The DAJD has traditionally reported the number of bookings as the measure of admission. A single booking covers all activity from the time of admission to the time of release from custody. For the purpose of data tracking, it was necessary to develop a new measure to track location movements within a booking. Placements are defined for only the custodial populations in Electronic Home Detention, Secure Detention and Work Education Release. A placement occurs the first time that a person enters a custodial population, but is only counted once in a booking for each of the three populations. One booking can therefore create no more than three placements. The placement is counted in the month the placement occurred, not necessarily in the month the booking occurred.
- **Program Length of Stay:** The total number of days during the total incarceration event that a person was placed in the various custodial locations (Secure, Work Release, Electronic Home Detention) or a specific status group with Secure Detention (Pre-Trial Felon, Pre-Trial Misdemeanant, Sentenced Felon, Sentenced Misdemeanant, State Holds, and Other). For DRC, it is the average imposed sentence length for participants who started during the month.

**King County Department of Adult and Juvenile Detention
Detention and Alternatives Report
For the Month of July 2008**

Adult Population by Placement

Work Education Release						
	Average Daily Population		Number of Placements		Placement Length of Stay (days)	
	2007	2008	2007	2008	2007	2008
January	145	148	108	118	43.87	52.79
February	139	162	65	120	42.74	48.83
March	120	176	93	125	62.21	47.31
April	132	176	114	114	43.61	42.98
May	142	171	114	98	43.75	42.72
June	146	172	134	103	47.41	51.01
July	144	172	92	120	42.12	42.74
August	139	-	106	-	38.26	-
September	156	-	106	-	50.91	-
October	168	-	133	-	40.41	-
November	164	-	99	-	45.50	-
December	158	-	85	-	49.25	-
YTD Average	146	169	104	114	45.84	48.82

Definitions

- **Work/Education Release (WER):** A custodial community corrections program operated by DAJD that allows inmates to be released from custody in order to go to work and/or school. When they are not at work and/or school, the inmates are in-custody.
- **Average Daily Population (ADP):** Mean number of inmates in the custodial populations on a daily basis. Total number of inmate days divided by the number of days in the time-period.
- **Number of Placements:** The DAJD has traditionally reported the number of bookings as the measure of admission. A single booking covers all activity from the time of admission to the time of release from custody. For the purpose of data tracking, it was necessary to develop a new measure to track location movements within a booking. Placements are defined for only the custodial populations in Electronic Home Detention, Secure Detention and Work Education Release. A placement occurs the first time that a person enters a custodial population, but is only counted once in a booking for each of the three populations. One booking can therefore create no more than three placements. The placement is counted in the month the placement occurred, not necessarily in the month the booking occurred.
- **Program Length of Stay:** The total number of days during the total incarceration event that a person was placed in the various custodial locations (Secure, Work Release, Electronic Home Detention) or a specific status group with Secure Detention (Pre-Trial Felon, Pre-Trial Misdemeanant, Sentenced Felon, Sentenced Misdemeanant, State Holds, and Other). For DRC, it is the average imposed sentence length for participants who started during the month.

**King County Department of Adult and Juvenile Detention
Detention and Alternatives Report
For the Month of July 2008**

Adult Population by Placement

CCAP										
	Average Daily Enrollment		Admissions		Average Daily Workload		Average Sentence Length (days)		Calendar Length of Stay (days)	
	2007	2008	2007	2008	2007	2008	2007	2008	2007	2008
January	218	176	97	90	52	88	41.58	41.67	80.34	68.09
February	226	181	93	86	63	76	113.50	29.60	63.29	61.68
March	218	179	78	101	66	65	55.55	29.42	75.76	74.15
April	212	194	72	103	70	69	42.29	85.00	77.48	71.90
May	189	218	79	85	70	76	58.68	44.38	78.26	52.83
June	188	211	76	60	68	74	31.83	30.00	71.36	73.13
July	177	201	75	83	64	74	77.40	23.14	81.78	68.45
August	166	-	77	-	63	-	53.83	-	75.32	-
September	168	-	54	-	62	-	62.58	-	69.07	-
October	161	-	71	-	68	-	43.57	-	96.42	-
November	165	-	76	-	73	-	56.08	-	65.91	-
December	173	-	77	-	87	-	71.50	-	62.52	-
YTD Average	188	194	77	87	67	75	59.63	40.49	74.79	67.18

Definitions

- Community Corrections Accountability Program (CCAP): A non-custodial community corrections based program that provides structured non-custodial programs that can consist of supervision, treatment services, and sanctions.
- Average Daily Enrollment: The number of days a participant has an open case during the month. It is the difference between the closed date and the active date within the month. When a case is closed, then subsequently reactivated, it is the sum of all "active spans" excluding days when the case was closed during the month.
- Admissions: Number of cases initially activated (i.e. using the first active date) in the month. There is one admission per case even when a case is closed and then reactivated.
- Average Daily Workload: Average number of CCAP participants attending a program during the month. It is calculated as the sum of all CCAP attendance contacts in the month for enhanced cases divided by the number of program days in the month.
- Average Sentence Length (in days): Average imposed sentence length for persons admitted in the month. It is calculated using only participants who have a sentence; values of "999" in COMCOR are excluded. If a case has more than one sentence, the longest sentence is used in the calculation.
- Calendar Length of Stay (in days): Average number of days participants were enrolled in CCAP for persons whose cases closed during the month. It is calculated as the total sum of days from the first active date to the final closed date less any time the case was closed.

King County Department of Adult and Juvenile Detention
Detention and Alternatives Report
For the Month of July 2008

Adult Population by Placement

Work Crew										
	Average Daily Enrollment		Admissions		Average Daily Workload		Program Length of Stay (days)		Calendar Length of Stay (days)	
	2007	2008	2007	2008	2007	2008	2007	2008	2007	2008
January	274	411	152	288	28	39	-	-	-	-
February	308	437	211	205	33	42	-	-	-	-
March	327	363	239	200	40	41	-	-	-	-
April	335	408	147	194	35	42	-	-	-	-
May	396	451	213	218	36	39	-	-	-	-
June	380	444	183	187	41	47	-	-	-	-
July	375	483	160	209	35	40	-	-	-	-
August	390	-	185	-	40	-	-	-	-	-
September	387	-	148	-	36	-	-	-	-	-
October	371	-	197	-	41	-	-	-	-	-
November	371	-	169	-	43	-	-	-	-	-
December	385	-	144	-	40	-	-	-	-	-
YTD Average	358	428	173	214	37	41				

Definitions

- **Work Crew:** A non-custodial community correction's sanction/program in which offenders perform work such as cleaning up garbage on highways or parks in lieu of incarceration.
- **Average Daily Enrollment (ADE):** Mean number of persons enrolled in a non-custodial program, irrespective of program participation. Total number of enrollee days divided by the number of days in the time-period; calculated as start date to closed date.
- **Admission:** A single event during a calendar month in which a person is processed into one of the non-custodial programs operated by the Division of Community Corrections and the Juvenile Alternatives to Secure Detention programs including Day Reporting, Evening Reporting, Group Care and Work Crew. For DRC, it is a count of new referrals in the month.
- **Average Daily Workload (ADW):** Mean number of persons in non-custodial populations based on program participation days within a time-period. Total number of active participation days divided by program participation days in the time-period.
- **Program Length of Stay:** The total number of days during the total incarceration event that a person was placed in the various custodial locations (Secure, Work Release, Electronic Home Detention) or a specific status group with Secure Detention (Pre-Trial Felon, Pre-Trial Misdemeanant, Sentenced Felon, Sentenced Misdemeanant, State Holds, and Other). For DRC, it is the average imposed sentence length for participants who started during the month.
- **Calendar Length of Stay:** The average number of actual calendar days that a person spends in a non-custodial community corrections based program. It is based on the day that a person is admitted into the program and the day that they leave the program. For DRC, it is calculated for persons whose cases are closed during the month.

King County Department of Adult and Juvenile Detention
Detention and Alternatives Report
For the Month of July 2008

Adult Population by Charge Status

Pre-Sentence Felon						
	Average Daily Population		Number of Placements		Placement Length of Stay (days)	
	2007	2008	2007	2008	2007	2008
January	1,503	1,420	1,670	1,340	34.75	35.64
February	1,520	1,418	1,453	1,224	33.83	42.22
March	1,554	1,391	1,536	1,292	35.50	37.36
April	1,567	1,434	1,538	1,319	34.98	37.46
May	1,496	1,401	1,503	1,237	37.28	33.17
June	1,490	1,343	1,473	1,202	32.74	45.67
July	1,450	1,334	1,436	1,302	34.83	33.42
August	1,469	-	1,548	-	31.25	-
September	1,502	-	1,258	-	31.54	-
October	1,467	-	1,292	-	36.53	-
November	1,458	-	1,219	-	37.76	-
December	1,402	-	1,236	-	37.52	-
YTD Average	1,489	1,391	1,436	1,274	35.16	37.83

Definitions

- **Pre-Sentence:** The portion of the criminal justice process from time of arrest to time of sentencing. The pre-sentence time is often significantly longer than the pre-adjudication time, due to the length of time between judgment and sentence.
- **Average Daily Population (ADP):** Mean number of inmates in the custodial populations on a daily basis. Total number of inmate days divided by the number of days in the time-period.
- **Number of Placements:** The DAJD has traditionally reported the number of bookings as the measure of admission. A single booking covers all activity from the time of admission to the time of release from custody. For the purpose of data tracking, it was necessary to develop a new measure to track location movements within a booking. Placements are defined for only the custodial populations in Electronic Home Detention, Secure Detention and Work Education Release. A placement occurs the first time that a person enters a custodial population, but is only counted once in a booking for each of the three populations. One booking can therefore create no more than three placements. The placement is counted in the month the placement occurred, not necessarily in the month the booking occurred.
- **Program Length of Stay:** The total number of days during the total incarceration event that a person was placed in the various custodial locations (Secure, Work Release, Electronic Home Detention) or a specific status group with Secure Detention (Pre-Trial Felon, Pre-Trial Misdemeanant, Sentenced Felon, Sentenced Misdemeanant, State Holds, and Other). For DRC, it is the average imposed sentence length for participants who started during the month.

King County Department of Adult and Juvenile Detention
Detention and Alternatives Report
For the Month of July 2008

Adult Population by Charge Status

Sentenced Felon						
	Average Daily Population		Number of Placements		Placement Length of Stay (days)	
	2007	2008	2007	2008	2007	2008
January	149	253	201	306	48.25	47.95
February	169	259	241	290	43.00	40.01
March	182	268	227	278	53.43	39.74
April	181	275	229	303	42.32	40.33
May	220	274	269	315	42.00	36.65
June	269	270	323	285	43.19	39.06
July	272	267	303	283	36.86	39.67
August	261	-	320	-	39.50	-
September	243	-	281	-	41.96	-
October	258	-	340	-	42.70	-
November	270	-	286	-	39.72	-
December	258	-	283	-	36.99	-
YTD Average	228	267	274	294	41.77	40.30

Definitions

- **Sentence:** The portion of the Average Daily Population from the time the sentence date is entered to completion of the sentence.
- **Average Daily Population (ADP):** Mean number of inmates in the custodial populations on a daily basis. Total number of inmate days divided by the number of days in the time-period.
- **Number of Placements:** The DAJD has traditionally reported the number of bookings as the measure of admission. A single booking covers all activity from the time of admission to the time of release from custody. For the purpose of data tracking, it was necessary to develop a new measure to track location movements within a booking. Placements are defined for only the custodial populations in Electronic Home Detention, Secure Detention and Work Education Release. A placement occurs the first time that a person enters a custodial population, but is only counted once in a booking for each of the three populations. One booking can therefore create no more than three placements. The placement is counted in the month the placement occurred, not necessarily in the month the booking occurred.
- **Program Length of Stay:** The total number of days during the total incarceration event that a person was placed in the various custodial locations (Secure, Work Release, Electronic Home Detention) or a specific status group with Secure Detention (Pre-Trial Felon, Pre-Trial Misdemeanant, Sentenced Felon, Sentenced Misdemeanant, State Holds, and Other). For DRC, it is the average imposed sentence length for participants who started during the month.

King County Department of Adult and Juvenile Detention
Detention and Alternatives Report
For the Month of July 2008

Adult Population by Charge Status

Pre-Sentence Misdemeanant						
	Average Daily Population		Number of Placements		Placement Length of Stay (days)	
	2007	2008	2007	2008	2007	2008
January	306	258	1,755	1,649	6.54	5.89
February	317	274	1,765	1,500	6.93	6.15
March	297	268	1,848	1,569	6.69	6.70
April	293	247	1,928	1,520	5.89	6.85
May	326	253	2,023	1,652	6.59	5.52
June	318	259	1,955	1,566	6.20	5.94
July	314	254	1,960	1,673	6.38	6.38
August	286	-	1,914	-	5.97	-
September	281	-	1,809	-	5.46	-
October	256	-	1,664	-	6.36	-
November	250	-	1,524	-	6.56	-
December	232	-	1,586	-	5.79	-
YTD Average	290	259	1,811	1,590	6.29	6.21

Definitions

- **Pre-Sentence:** The portion of the criminal justice process from time of arrest to time of sentencing. The pre-sentence time is often significantly longer than the pre-adjudication time, due to the length of time between judgment and sentence.
- **Misdemeanor:** Misdemeanors and Gross Misdemeanors. A misdemeanor is any crime punishable by a fine of not more than one thousand dollars, or by imprisonment in a county jail for not more than ninety days or by both such fine and imprisonment. A gross misdemeanor is any crime punishable by imprisonment in the county jail for a maximum term of not more than one year or by a fine in an amount fixed by the court of not more than five thousand dollars, or by both such imprisonment and fine.
- **Average Daily Population (ADP):** Mean number of inmates in the custodial populations on a daily basis. Total number of inmate days divided by the number of days in the time-period.
- **Number of Placements:** The DAJD has traditionally reported the number of bookings as the measure of admission. A single booking covers all activity from the time of admission to the time of release from custody. For the purpose of data tracking, it was necessary to develop a new measure to track location movements within a booking. Placements are defined for only the custodial populations in Electronic Home Detention, Secure Detention and Work Education Release. A placement occurs the first time that a person enters a custodial population, but is only counted once in a booking for each of the three populations. One booking can therefore create no more than three placements. The placement is counted in the month the placement occurred, not necessarily in the month the booking occurred.
- **Program Length of Stay:** The total number of days during the total incarceration event that a person was placed in the various custodial locations (Secure, Work Release, Electronic Home Detention) or a specific status group with Secure Detention (Pre-Trial Felon, Pre-Trial Misdemeanant, Sentenced Felon, Sentenced Misdemeanant, State Holds, and Other). For DRC, it is the average imposed sentence length for participants who started during the month.

King County Department of Adult and Juvenile Detention
Detention and Alternatives Report
For the Month of July 2008

Adult Population by Charge Status

Sentenced Misdemeanant						
	Average Daily Population		Number of Placements		Placement Length of Stay (days)	
	2007	2008	2007	2008	2007	2008
January	168	163	563	458	20.22	19.81
February	169	184	496	549	16.74	21.32
March	177	198	517	529	19.80	17.86
April	169	186	469	520	17.04	18.18
May	191	192	545	584	15.26	18.88
June	186	199	561	556	20.86	20.93
July	183	200	588	572	19.25	17.95
August	178	-	593	-	16.74	-
September	176	-	490	-	18.65	-
October	197	-	545	-	19.06	-
November	198	-	475	-	22.30	-
December	174	-	424	-	22.19	-
YTD Average	181	189	572	555	19.14	19.23

Definitions

- **Sentence:** The portion of the Average Daily Population from the time the sentence date is entered to completion of the sentence.
- **Misdemeanor:** Misdemeanors and Gross Misdemeanors. A misdemeanor is any crime punishable by a fine of not more than one thousand dollars, or by imprisonment in a county jail for not more than ninety days or by both such fine and imprisonment. A gross misdemeanor is any crime punishable by imprisonment in the county jail for a maximum term of not more than one year or by a fine in an amount fixed by the court of not more than five thousand dollars, or by both such imprisonment and fine.
- **Average Daily Population (ADP):** Mean number of inmates in the custodial populations on a daily basis. Total number of inmate days divided by the number of days in the time- period.
- **Number of Placements:** The DAJD has traditionally reported the number of bookings as the measure of admission. A single booking covers all activity from the time of admission to the time of release from custody. For the purpose of data tracking, it was necessary to develop a new measure to track location movements within a booking. Placements are defined for only the custodial populations in Electronic Home Detention, Secure Detention and Work Education Release. A placement occurs the first time that a person enters a custodial population, but is only counted once in a booking for each of the three populations. One booking can therefore create no more than three placements. The placement is counted in the month the placement occurred, not necessarily in the month the booking occurred.
- **Program Length of Stay:** The total number of days during the total incarceration event that a person was placed in the various custodial locations (Secure, Work Release, Electronic Home Detention) or a specific status group with Secure Detention (Pre-Trial Felon, Pre-Trial Misdemeanant, Sentenced Felon, Sentenced Misdemeanant, State Holds, and Other). For DRC, it is the average imposed sentence length for participants who started during the month.

King County Department of Adult and Juvenile Detention
Detention and Alternatives Report
For the Month of July 2008

Adult Population by Charge Status

State Hold						
	Average Daily Population		Number of Placements		Placement Length of Stay (days)	
	2007	2008	2007	2008	2007	2008
January	257	223	640	701	12.95	9.62
February	272	197	590	650	12.46	9.67
March	254	180	637	559	13.98	9.84
April	287	188	748	663	12.13	10.11
May	258	201	702	658	12.23	9.41
June	189	209	621	648	9.83	10.74
July	174	188	594	654	9.04	9.28
August	196	-	697	-	8.73	-
September	224	-	614	-	9.88	-
October	186	-	616	-	10.56	-
November	184	-	564	-	11.45	-
December	197	-	582	-	11.01	-
YTD Average	223	181	634	648	11.22	9.80

Definitions

- **State Hold:** The State Hold status group, as reported in the King County Jail's population reports, consists of several different status groups as determined by their most serious charge. There are those inmates who have been sentenced to DOC awaiting transfer to the state institution, and there are those inmates who are accused of violating a condition of their felony sentence including probation, Community Supervision, Post-release Supervision, Insanity Acquittal, Community Custody, Interstate Detainer, Parole, and State Work Release. It also includes those prisoners who are already serving a prison sentence, but are returned to face new charges or for other court related matters.
- **Average Daily Population (ADP):** Mean number of inmates in the custodial populations on a daily basis. Total number of inmate days divided by the number of days in the time- period.
- **Number of Placements:** The DAJD has traditionally reported the number of bookings as the measure of admission. A single booking covers all activity from the time of admission to the time of release from custody. For the purpose of data tracking, it was necessary to develop a new measure to track location movements within a booking. Placements are defined for only the custodial populations in Electronic Home Detention, Secure Detention and Work Education Release. A placement occurs the first time that a person enters a custodial population, but is only counted once in a booking for each of the three populations. One booking can therefore create no more than three placements. The placement is counted in the month the placement occurred, not necessarily in the month the booking occurred.
- **Program Length of Stay:** The total number of days during the total incarceration event that a person was placed in the various custodial locations (Secure, Work Release, Electronic Home Detention) or a specific status group with Secure Detention (Pre-Trial Felon, Pre-Trial Misdemeanant, Sentenced Felon, Sentenced Misdemeanant, State Holds, and Other). For DRC, it is the average imposed sentence length for participants who started during the month.

King County Department of Adult and Juvenile Detention
Detention and Alternatives Report
For the Month of July 2008

Adult Population by Charge Status

Other Hold						
	Average Daily Population		Number of Placements		Placement Length of Stay (days)	
	2007	2008	2007	2008	2007	2008
January	59	63	384	345	8.15	5.59
February	47	65	335	303	6.02	5.78
March	45	57	310	311	5.12	7.70
April	52	50	361	322	4.37	6.01
May	51	52	359	356	5.27	7.69
June	56	44	352	333	6.03	5.74
July	55	53	359	371	4.84	5.53
August	57	-	386	-	4.81	-
September	65	-	341	-	8.08	-
October	60	-	346	-	7.13	-
November	52	-	298	-	5.99	-
December	52	-	321	-	5.22	-
YTD Average	54	55	346	334	5.95	6.28

Definitions

- Other Hold: This charge status includes offenders held for such reasons as immigration, federal charge, transient, other county holds and fugitive.
- Average Daily Population (ADP): Mean number of inmates in the custodial populations on a daily basis. Total number of inmate days divided by the number of days in the time-period.
- Number of Placements: The DAJD has traditionally reported the number of bookings as the measure of admission. A single booking covers all activity from the time of admission to the time of release from custody. For the purpose of data tracking, it was necessary to develop a new measure to track location movements within a booking. Placements are defined for only the custodial populations in Electronic Home Detention, Secure Detention and Work Education Release. A placement occurs the first time that a person enters a custodial population, but is only counted once in a booking for each of the three populations. One booking can therefore create no more than three placements. The placement is counted in the month the placement occurred, not necessarily in the month the booking occurred.
- Program Length of Stay: The total number of days during the total incarceration event that a person was placed in the various custodial locations (Secure, Work Release, Electronic Home Detention) or a specific status group with Secure Detention (Pre-Trial Felon, Pre-Trial Misdemeanant, Sentenced Felon, Sentenced Misdemeanant, State Holds, and Other). For DRC, it is the average imposed sentence length for participants who started during the month.

King County Department of Adult and Juvenile Detention
Detention and Alternatives Report
For the Month of July 2008

Juvenile Population by Placement

Secure						
	Average Daily Population		Admissions		Length of Stay (days)	
	2007	2008	2007	2008	2007	2008
January	83	96	317	319	8.13	9.29
February	96	106	290	284	9.25	10.80
March	101	99	371	306	8.43	10.04
April	107	104	330	326	9.74	9.58
May	104	108	346	340	9.34	9.86
June	112	92	362	307	9.31	9.03
July	94	66	281	270	10.33	7.54
August	87	-	289	-	9.33	-
September	83	-	296	-	8.42	-
October	84	-	316	-	8.27	-
November	95	-	313	-	9.06	-
December	93	-	263	-	11.00	-
YTD Average	95	96	315	307	9.22	9.45

Definitions

- **Secure:** Total confinement within a 24-hour detention facility.
- **Average Daily Population (ADP):** Mean number of inmates in the custodial populations on a daily basis. Total number of inmate days divided by the number of days in the time- period.
- **Admission:** A single event during a calendar month in which a person is processed into one of the non-custodial programs operated by the Division of Community Corrections and the Juvenile Alternatives to Secure Detention programs including Day Reporting, Evening Reporting, Group Care, Work Crew and Weekend Reporting. For DRC, it is a count of new referrals in the month.
- **Average Length of Stay (ALOS):** The average number of days a person spends in a program or jail based upon release month.

King County Department of Adult and Juvenile Detention
Detention and Alternatives Report
For the Month of July 2008

Juvenile Population by Placement

Electronic Home Detention						
	Average Daily Population		Admissions		Length of Stay (days)	
	2007	2008	2007	2008	2007	2008
January	27	25	66	46	12.10	20.44
February	43	29	58	54	20.86	14.28
March	27	32	59	51	13.23	20.00
April	26	26	43	55	14.89	13.00
May	27	29	58	62	12.92	15.42
June	31	25	54	60	17.71	13.01
July	28	27	43	49	25.23	14.28
August	31	-	54	-	20.92	-
September	25	-	26	-	16.96	-
October	26	-	53	-	18.64	-
November	24	-	48	-	11.65	-
December	20	-	36	-	21.21	-
YTD Average	28	28	56	54	17.19	15.78

Definitions

- Electronic Home Detention (EHD): A program that allows offenders to be maintained under electronic surveillance within their home and work site. This program requires random drug and alcohol testing. People on EHD are considered to be in-custody.
- Average Daily Population (ADP): Mean number of inmates in the custodial populations on a daily basis. Total number of inmate days divided by the number of days in the time- period.
- Admission: A single event during a calendar month in which a person is processed into one of the non-custodial programs operated by the Division of Community Corrections and the Juvenile Alternatives to Secure Detention programs including Day Reporting, Evening Reporting, Group Care, Work Crew and Weekend Reporting. For DRC, it is a count of new referrals in the month.
- Average Length of Stay (ALOS): The average number of days a person spends in a program or jail based upon release month.

King County Department of Adult and Juvenile Detention
Detention and Alternatives Report
For the Month of July 2008

Juvenile Population by Placement

Group Care						
	Average Daily Population		Admissions		Length of Stay (days)	
	2007	2008	2007	2008	2007	2008
January	2	2	3	1	16.80	26.00
February	2	1	5	2	22.00	11.50
March	3	0	4	2	15.00	3.00
April	1	1	3	1	17.40	11.50
May	2	0	7	0	7.00	0.00
June	1	0	4	0	10.60	0.00
July	2	0	5	0	15.00	0.00
August	2	-	8	-	7.60	-
September	2	-	4	-	8.30	-
October	3	-	5	-	13.30	-
November	2	-	6	-	4.30	-
December	1	-	3	-	11.70	-
YTD/Average	2	0	5	1	12.42	7.45

Definitions

- **Group Care:** The group home provides 24-hour staff supervision, school, counseling, work activities and recreation. Group home placement supplies the youth a window for court services, alternatives to secure detention and mental health staff to formulate strategies of intervention and treatment.
- **Admission:** A single event during a calendar month in which a person is processed into one of the non-custodial programs operated by the Division of Community Corrections and the Juvenile Alternatives to Secure Detention programs including Day Reporting, Evening Reporting, Group Care, Work Crew and Weekend Reporting. For DRC, it is a count of new referrals in the month.
- **Average Daily Workload (ADW):** Mean number of persons in non-custodial populations based on program participation days within a time-period. Total number of active participation days divided by program participation days in the time-period.
- **Program ALOS:** The total days ordered by the court for all persons admitted to a non-custodial community correction program (Day Reporting, Work Crew, and Group Care) in that month divided by the number of persons admitted in that month.
- **Calendar Length of Stay:** The average number of actual calendar days that a person spends in a non-custodial community corrections based program. It is based on the day that a person is admitted into the program and the day that they leave the program. For DRC, it is calculated for persons whose cases are closed during the month.

King County Department of Adult and Juvenile Detention
Detention and Alternatives Report
For the Month of July 2008

Juvenile Population by Placement

DRC/ERC										
	Average Daily Enrollment		Admissions		Average Daily Workload		Program Length of Stay (days)		Calendar Length of Stay (days)	
	2007	2008	2007	2008	2007	2008	2007	2008	2007	2008
January	13	4	8	5	11	2	21.93	-	23.80	19.22
February	15	6	15	9	12	6	18.44	-	19.38	16.00
March	13	4	16	7	13	3	18.71	-	29.33	18.25
April	10	5	9	13	10	2	14.55	-	39.53	17.90
May	11	7	17	16	10	2	21.26	-	26.83	11.14
June	9	9	5	14	9	2	25.90	-	29.92	15.92
July	4	8	9	8	4	4	12.55	-	20.33	19.33
August	6	-	11	-	11	-	5.52	-	15.10	-
September	3	-	3	-	2	-	9.12	-	24.80	-
October	4	-	5	-	4	-	15.85	-	20.57	-
November	6	-	9	-	3	-	10.10	-	20.33	-
December	6	-	6	-	-	-	-	-	19.50	-
YTD Average	8	6	9	10	6	3	15.11		24.12	16.82

Definitions

- Day Reporting Center: A non-custodial community corrections based program that provides structured non-custodial programs that can consist of supervision, treatment services, and sanctions.
- Admission: A single event during a calendar month in which a person is processed into one of the non-custodial programs operated by the Division of Community Corrections and the Juvenile Alternatives to Secure Detention programs including Day Reporting, Evening Reporting, Group Care, Work Crew and Weekend Reporting. For DRC, it is a count of new referrals in the month.
- Average Daily Workload (ADW): Mean number of persons in non-custodial populations based on program participation days within a time-period. Total number of active participation days divided by program participation days in the time-period.
- Program ALOS: The total days ordered by the court for all persons admitted to a non-custodial community correction program (Day Reporting, Work Crew, and Group Care) in that month divided by the number of persons admitted in that month.
- Calendar Length of Stay: The average number of actual calendar days that a person spends in a non-custodial community corrections based program. It is based on the day that a person is admitted into the program and the day that they leave the program. For DRC, it is calculated for persons whose cases are closed during the month.

King County Department of Adult and Juvenile Detention
Detention and Alternatives Report
For the Month of July 2008

Juvenile Population by Placement

Work Crew										
	Average Daily Enrollment		Admissions		Average Daily Workload		Program Length of Stay (days)		Calendar Length of Stay (days)	
	2007	2008	2007	2008	2007	2008	2007	2008	2007	2008
January	19	22	35	36	1	6	2.67	2.21	17.00	18.67
February	37	28	38	33	2	9	2.45	2.31	13.55	25.56
March	33	29	37	32	2	12	2.41	2.22	17.84	25.07
April	23	24	28	22	1	11	2.21	2.15	15.66	24.72
May	25	25	35	37	2	10	2.34	2.30	14.32	26.52
June	27	26	40	24	3	8	2.23	2.45	11.42	27.30
July	26	26	34	38	2	7	2.38	2.62	13.31	21.57
August	26	-	33	-	1	-	2.33	-	14.74	-
September	20	-	27	-	1	-	2.26	-	14.76	-
October	21	-	29	-	1	-	2.55	-	18.40	-
November	27	-	39	-	2	-	2.60	-	14.15	-
December	26	-	24	-	-	-	2.08	-	9.31	-
YTD Average	26	26	33	32	2	9	2.38	2.32	14.54	24.20

Definitions

- **Work Crew:** A non-custodial community correction's sanction/program in which offenders perform work such as cleaning up garbage on highways or parks in lieu of incarceration.
- **Admission:** A single event during a calendar month in which a person is processed into one of the non-custodial programs operated by the Division of Community Corrections and the Juvenile Alternatives to Secure Detention programs including Day Reporting, Evening Reporting, Group Care, Work Crew and Weekend Reporting. For DRC, it is a count of new referrals in the month.
- **Average Daily Workload (ADW):** Mean number of persons in non-custodial populations based on program participation days within a time-period. Total number of active participation days divided by program participation days in the time-period.
- **Program ALOS:** The total days ordered by the court for all persons admitted to a non-custodial community correction program (Day Reporting, Work Crew, and Group Care) in that month divided by the number of persons admitted in that month.
- **Calendar Length of Stay:** The average number of actual calendar days that a person spends in a non-custodial community corrections based program. It is based on the day that a person is admitted into the program and the day that they leave the program. For DRC, it is calculated for persons whose cases are closed during the month.

King County Department of Adult and Juvenile Detention
Detention and Alternatives Report
For the Month of July 2008

Juvenile Population by Placement

Weekend Reporting						
	Admissions		Average Daily Workload		Calendar Length of Stay (days)	
	2007	2008	2007	2008	2007	2008
January	-	-	-	-	-	-
February	-	-	-	-	-	-
March	-	13	-	3	-	7.00
April	-	13	-	7	-	10.45
May	-	10	-	3	-	5.86
June	-	11	-	5	-	6.40
July	-	9	-	3	-	6.50
August	-	-	-	-	-	-
September	-	-	-	-	-	-
October	-	-	-	-	-	-
November	-	-	-	-	-	-
December	-	-	-	-	-	-
YTD Average		11		4		7.24

Definitions

- Admission: A single event during a calendar month in which a person is processed into one of the non-custodial programs operated by the Division of Community Corrections and the Juvenile Alternatives to Secure Detention programs including Day Reporting, Evening Reporting, Group Care, Work Crew and Weekend Reporting. For DRC, it is a count of new referrals in the month.
- Average Daily Workload (ADW): Mean number of persons in non-custodial populations based on program participation days within a time-period. Total number of active participation days divided by program participation days in the time-period.
- Calendar Length of Stay: The average number of actual calendar days that a person spends in a non-custodial community corrections based program. It is based on the day that a person is admitted into the program and the day that they leave the program. For DRC, it is calculated for persons whose cases are closed during the month.
- Weekend Reporting: Started March 2008. The program is offered four days a month, Saturday and Sunday every other weekend, and the maximum slot available each day is 14. A non-custodial community corrections based program that provides structured non-custodial programs and activities that can consist of supervision, team building, and goal-setting.

**King County Department of Adult and Juvenile Detention
Detention and Alternatives Report
For the Month of July 2008**

**Forecast Variance Report
July 2008**

Facility/Program	Quarterly Forecast	Utilization/Enrollment		
		Actual	Variance	% Variance
Secure Facilities				
KCCF	1,591	1,312.5	-278.5	(17.5%)
RJC	1,000	983.3	-16.7	(1.7%)
Total Secure Adult	2,591	2,295.7	-295.3	(11.4%)
YSC	110	65.7	-44.3	(40.3%)
Adult Community Facilities/Programs				
EHD (ADP)	110	85.5	-24.5	(22.3%)
WER (ADP)	162	172.0	10.0	6.2%
CCAP (ADE)	99	200.9	101.9	103%
Work Crew (ADE)	185	483.0	298.0	161%
Juvenile Alternatives to Secure Detention				
EHD (ADW)	36	27.1	-8.9	(24.8%)
DRC/ERC (ADW)	15	4.1	-10.9	(72.4%)
Group Care (ADW)	3	0.0	-3.0	
Work Crew (ADW)	4	7.4	3.4	84.5%
Weekend Reporting (ADW)	14	2.5	-11.5	(82.1%)
Total ASD - Juvenile	72	41.1	-30.9	(42.9%)

Definitions

- KCCF: (King County Correctional Facility), located in Seattle. The KCCF includes the Tower with a bed capacity of 1262 and the West Wing with a capacity of 435.
- Forecast target for the KCCF is based on 1) the Tower capacity permitted under the Hammer lawsuit mediated agreement (1262), 2) less the average number of beds lost due to the ISP, 3) less a 2.5% vacancy rate, 4) plus the forecasted intake capacity of 30.
- RJC: (Regional Justice Center) located in Kent. Capacity in the table reflects expected number of beds in use during 2006 out of the total fully double bunked capacity of 1457.
- YSC (Youth Services Center); EHD (electronic Home Detention); WER (Work Education Release); CCAP (Community Correction Accountability Program); WC (Work Crew); DRC/ERC (Day/Evening Reporting Center); GC (Group Care); ADP (Average Daily Population), term applied to incarcerated custodial populations; ADE (Average Daily Enrollment), term applied to average number enrolled, not participating on a daily basis; ADW (Average Daily Workload), refers to the average number of persons participating in a program per day and is applied to non-custodial programs.
- Secure facility capacities vary over the year; the annual forecast for KCCJ and RJC are averages for the year.

**King County Department of Adult and Juvenile Detention
Detention and Alternatives Report
For the Month of July 2008**

**Forecast Variance Report
2008 Year to Date**

Facility/Program	Annual Forecast	Utilization/Enrollment		
		Actual	Variance	% Variance
Secure Facilities				
KCCF	1,614	1,327.0	-287.0	(17.8%)
RJC	970	1,032.5	62.5	6.4%
Total Secure Adult	2,584	2,359.4	-224.6	(8.7%)
YSC	110	95.8	-14.2	(12.9%)
Adult Community Facilities/Programs				
EHD (ADP)	110	88.1	-21.9	(19.9%)
WER (ADP)	162	168.1	6.1	3.8%
CCAP (ADE)	99	194.2	95.2	96.2%
Work Crew (ADE)	185	428.1	243.1	131%
Juvenile Alternatives to Secure Detention				
EHD (ADW)	36	27.6	-8.4	(23.4%)
DRC/ERC (ADW)	15	2.9	-12.1	(80.5%)
Group Care (ADW)	3	0.5	-2.5	(84.4%)
Work Crew (ADW)	4	9.2	5.2	129%
Weekend Reporting (ADW)	14	3.8	-10.2	(72.9%)
Total ASD - Juvenile	72	44.0	-28.1	(39.0%)

Definitions

- KCCF: (King County Correctional Facility), located in Seattle. The KCCF includes the Tower with a bed capacity of 1262 and the West Wing with a capacity of 435.
- Forecast target for the KCCF is based on 1) the Tower capacity permitted under the Hammer lawsuit mediated agreement (1262), 2) less the average number of beds lost due to the ISP, 3) less a 2.5% vacancy rate, 4) plus the forecasted Intake capacity of 30.
- RJC: (Regional Justice Center) located in Kent. Capacity in the table reflects expected number of beds in use during 2006 out of the total fully double bunked capacity of 1457.
- YSC (Youth Services Center); EHD (electronic Home Detention); WER (Work Education Release); CCAP (Community Correction Accountability Program); WC (Work Crew); DRC/ERC (Day/Evening Reporting Center); GC (Group Care); ADP (Average Daily Population), term applied to incarcerated custodial populations; ADE (Average Daily Enrollment), term applied to average number enrolled, not participating on a daily basis; ADW (Average Daily Workload), refers to the average number of persons participating in a program per day and is applied to non-custodial programs.
- Secure facility capacities vary over the year; the annual forecast for KCCJ and RJC are averages for the year.

King County Superior Court
Quarterly Statistical Report

Second Quarter 2008

Department of Judicial Administration
Prepared by: Shiquan Liao, Ph.D., Statistician

Release Date: July 20, 2008

Report #: QTR-2008-2

Quarterly Report Executive Summary

King County Superior Court

Second Quarter 2008

The quarterly statistical report serves the purpose of providing the court with a high level, overall picture of caseload and caseload. The contents are organized in seven sections, with narrative highlights for each section. Significant trend over time is noted as *WARNING*, *PROBLEM* or *POSITIVE*. A "PROBLEM TREND" is a trend that may cause delays in case resolution and has been consistent for several quarters, a "WARNING TREND" is an early warning of developing a "PROBLEM TREND", and a "POSITIVE TREND" is a statistically favorable trend over several quarters.

Overall Highlights

- **Criminal Cases** -- The criminal filings in the first two quarters of 2008 were significantly lower than that in the same period of 2007, with 17.5% decrease (-17.5%). The total criminal filings in the first two quarters of 2008 were 4,688 cases, with RJC accounting for about 35% of the total criminal filings in the entire court. The total resolutions of criminal cases in the first two quarters of 2008 were 4,938 cases. The pending criminal cases showed an improvement in 2008, but still remained at a very high volume. The pending caseload at the end of the second quarter of 2008 was 3,817 cases, including 589 cases enrolled in the drug diversion court. Of the 3,817 pending criminal cases, 36% were RJC cases.
- **General Civil and Domestic Cases**. Filings in general civil cases (case type 2) in the first two quarters of 2008 showed a slight increase from that in the same period of 2007, with an increase of 3.4% from 2007 (+3.4%). The resolutions of civil cases exceeded the filings in the same time period. Therefore, the pending civil caseload remained at a very low level of 8,810 cases (including 437 asbestos cases). For domestic cases (case type 3), the filings in the first two quarters of 2008 decreased by 7.4% from the same period of 2007 (-7.4%). The resolution pace in 2008 did not keep up with the filing pace. Therefore, the pending domestic caseload showed an increase and remained at 4,012 cases at the end of the second quarter of 2008.
- **Probate/Guardianship Cases**. Probate filings in the first two quarters of 2008 were slightly higher than that in the same time period of 2007 (+3.9%). The resolutions for probate cases exceeded the filings in 2008. Pending probate caseload were 776 cases. Guardianship filings in the first two quarters of 2008 were slightly lower than that in 2007 (-3.8%). The resolution of guardianship cases was able to keep up with the filing pace in the same time period. The pending paternity cases were 467 at the end of the second quarter of 2008.
- **Adoption/Paternity Cases**. Filings of adoption cases in the first two quarters of 2008 were essentially the same as that in the same time period of 2007 (-1.0%), totaling 384 cases. Paternity filings in the first two quarters of 2008 showed a significant decrease from the same period of 2007 (-29.9%). The pending caseload in adoption and paternity remained stable at the end of the second quarter of 2008: 314 pending adoption cases and 500 pending paternity cases.
- **Mental Illness Cases**. The filings of mental illness cases in the first two quarters of 2008 were higher than that in the same period of 2007 (+9.0%). Resolution pace was unable to keep up the pace with the filings in 2008. The pending caseload of mental illness at the end of the second quarter of 2008 was 330 cases, a quite high volume.
- **Juvenile Dependency/Termination (DEP/TER) and At-risk Youth (ARY)/Child-in-Need of Service (CHINS) Cases**. In the first two quarters of 2008, dependency filings were lower than that in the same period of 2007 (-12.6%), while filings in ARY/CHINS increased by 12.2% from the same period of 2007. At the end of the second quarter of 2008, the pending caseload was 698 and 108 cases for dependency and ARY/CHINS, respectively. Moreover, at the end of the second quarter 2008, there were 1,519 DEP cases that continuously require judicial activities after the findings of dependency (post-resolution and pre-completion cases).

- **Juvenile Truancy Cases.** The filings of juvenile truancy cases vary significantly from time to time. Filings of truancy cases had remained at a low level in the last 3 years. The truancy filings in the first two quarters of 2008 were 1,475 cases. There were 1,479 unresolved juvenile truancy cases at the end of the second quarter of 2008. Of the unresolved truancy cases, 59% were RJC cases.
- **Juvenile Offender Cases.** *Since 2005, juvenile offender "detention hearing only" filings are no longer counted as a real case if no amended information is filed later. This change has resulted in a significant decrease in filings.*

The juvenile offender filings in the first two quarters of 2008 were 1,855 cases, showing a 4.9% decrease from the same period of 2007 (-4.9%). The resolution pace in the same time period was behind the filing pace. The pending caseload of juvenile offender cases at the end of the second quarter of 2008 was 862 cases (including 54 juvenile drug court and treatment court cases).

- **Criminal and Civil RALJ Cases** – Filing volume continued to be at a low level for these two categories. At the end of the second quarter of 2008, the pending criminal RALJ cases remained at 184 cases and there were 41 pending civil RALJ cases.
- **Pro Tem Use.** Since the second quarter of 1998, the court has implemented a comprehensive data collection procedure to capture the use of Pro Tem judges and commissioners. Beginning 4/1/1998, the Pro Tem data include all Pro Tem judges/commissioners (paid or volunteer), Special Master, and judge(s) from the district court if applicable. In the 4 quarters of 2003, the court had used pro tem of 4.4, 4.5, 3.5, and 4.1 FTEs, respectively (including all donated hours). In 2004, the quarterly pro tem use in the court was 3.7, 3.7, 3.6, and 4.1 FTEs, respectively. In the four quarters of 2005, the pro tem use was 4.6, 5.8, 4.7, and 4.6 FTEs, respectively. In the four quarters of 2006, the court utilized an average of 4.2, 5.2, 5.3 and 4.7 FTE pro tem on daily basis, respectively. In the four quarters of 2007, the court used an average of 4.1, 4.5, 3.8, and 4.0 Pro Tem FTEs daily, respectively. In the first two quarters of 2008, the court used an average of 4.0 and 4.6 Pro Tem FTEs daily, respectively.
- **Post-resolution Modifications (Table I-A)** – *The filing activity as shown in Table I reflects new filings only (with new case numbers). For domestic and paternity cases, post-resolution modification is not unusual. Table I-A shows the post-resolution activities (both parenting plan modification and support modification) based on the case schedules (tracks) opened after the original resolution date (i.e., the track opening date is after the resolution date).*

In 2005, there were 1,838 modifications filed (814 domestic modifications and 1024 paternity modifications), with an average of 460 modifications per quarter. In 2006, there were 1,812 modifications (1,360 domestic modifications and 452 paternity modifications), with an average of 453 modifications per quarter. In 2007, there were 1,761 modifications (1,412 domestic modifications and 349 paternity modifications), with an average of 440 modifications per quarter.

In the first two quarters of 2008, there were 876 modifications (731 domestic modifications and 145 paternity modifications).

Table 1. Year-to-Date Filing Activity

King County Superior Court

Reporting Category	Year-to-Date (Jan 1 to Jun 30) and Annual Filing Activity ⁽¹⁾					2008-2007 change (+ means "increase")		% of 2008 Total Filing ⁽²⁾
	2004	2005	2006	2007	2008	Cases	Percentage	
Total (incl. RALJ)								
Year-to-Date Filing	33067	31784	32043	32559	31645	-914	-2.8%	
Annual Filing	64021	62522	62134	63057				
Criminal (excl. RALJ)								
Year-to-Date Filing	5122	4967	5204	5679	4688	-991	-17.5%	14.8%
Annual Filing	9962	9901	10648	10767				
General Civil (excl. Asbestos)								
Year-to-Date Filing	13850	13460	12864	13007	13445	+438	+3.4%	42.5%
Annual Filing	27567	26915	25377	25893				
Asbestos Cases (civil) ⁽³⁾								
Year-to-Date Filing		84	70	64	32	-32	-50.0%	0.1%
Annual Filing		124	92	127				
Domestic								
Year-to-Date Filing	3805	3981	4032	4016	3716	-300	-7.4%	11.7%
Annual Filing	7507	7837	7750	7720				
Probate								
Year-to-Date Filing	2636	2579	2713	2818	2927	+109	+3.9%	9.2%
Annual Filing	5082	4876	5136	5363				
Guardianship								
Year-to-Date Filing	450	429	436	451	434	-17	-3.8%	1.4%
Annual Filing	832	831	875	885				
Adoption								
Year-to-Date Filing	453	446	375	388	384	-4	-1.0%	1.2%
Annual Filing	884	846	751	717				
Paternity								
Year-to-Date Filing	827	659	774	823	577	-246	-29.9%	1.8%
Annual Filing	1508	1394	1199	1421				
Mental Illness								
Year-to-Date Filing	1186	1170	1075	1147	1250	+103	+9.0%	4.0%
Annual Filing	2317	2342	2226	2397				
Juvenile Dependency								
Year-to-Date Filing	546	478	494	532	465	-67	-12.6%	1.5%
Annual Filing	968	887	945	971				
Juvenile ARY/CHINS								
Year-to-Date Filing	265	216	236	222	249	+27	+12.2%	0.8%
Annual Filing	478	399	413	411				
Juvenile Truancy								
Year-to-Date Filing	1236	1189	1519	1304	1475	+171	+13.1%	4.7%
Annual Filing	1755	1803	2204	2111				
Juvenile Offender								
Year-to-Date Filing	2505	1918	2077	1950	1855	-95	-4.9%	5.9%
Annual Filing	4788	4085	4178	3954				
Criminal RALJ								
Year-to-Date Filing	130	144	129	113	111	-2	-2.0%	0.4%
Annual Filing	261	287	247	225				
Civil RALJ								
Year-to-Date Filing	56	64	45	45	37	-8	-17.8%	0.1%
Annual Filing	112	119	93	95				
Matters Filed with Clerk ⁽⁴⁾								
Year-to-Date Filing	5774	5599	6283	6717	6825	+108	+1.6%	
Annual Filing	11630	12332	12536	12784				

- (1) New filings only (based on filing date), excluding re-opened cases (unable to count), and reflecting all documents received by 07/15/2008.
- (2) New filings of each reporting category as percentage of total 2000 "Year-to-Date Filing".
- (3) Asbestos cases are part of the general civil caseload, listed separately starting third quarter, 2004.
- (4) "Matters Filed with Clerk" and "Additional Filings with Clerk" are not included in the "Total".

Chart 1-A. Quarterly Filing Activity
Total Judicial Cases Only ("Matters Filed with Clerk" excluded)

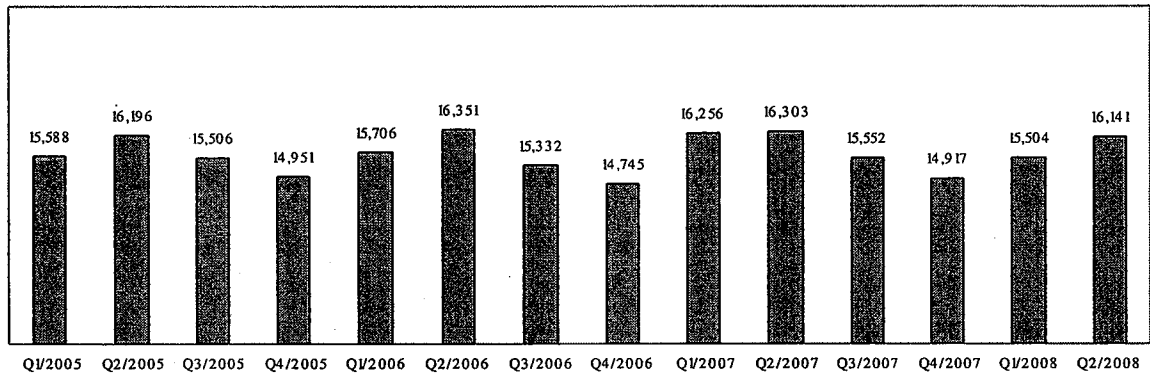
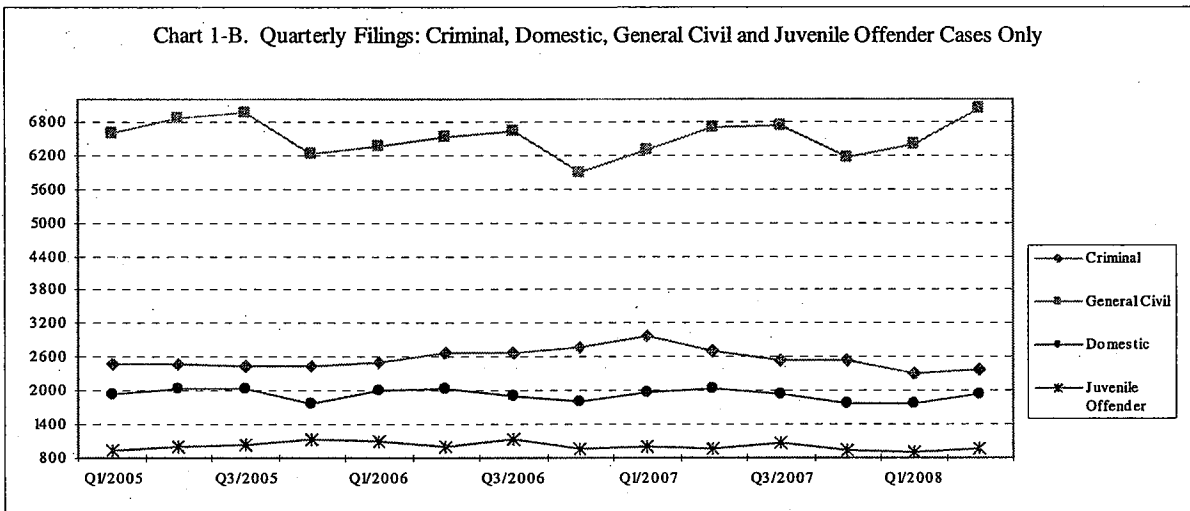


Chart 1-B. Quarterly Filings: Criminal, Domestic, General Civil and Juvenile Offender Cases Only



* Note: "General Civil" is specifically defined in this report. The category of "General Civil" does **not** include the following case types: domestic, probate, guardianship, adoption, paternity, mental illness, juvenile cases (dependency, at-risk youth, child-in-need of service, civil RALJ, and tax filings that don't require judicial resources ("matters filed with clerk"). Please check the Appendix for the cause codes in the "General Civil" category.

Table 1-A. Post-Resolution Modifications (Domestic and Paternity Cases)

Based on Tracks Opened After Original Resolution Date

		2006Q1			2006Q2			2006Q3			2006Q4			Year 2006		
Location	Case Type	DMOD	DTBA	Total	DMOD	DTBA	Total	DMOD	DTBA	Total	DMOD	DTBA	Total	DMOD	DTBA	Total
KNT	Domestic	89	66	155	116	84	200	114	63	177	94	34	128	413	247	660
	Paternity	13	29	42	22	43	65	37	32	69	24	22	46	96	126	222
KNT Total		102	95	197	138	127	265	138	127	265	138	127	265	516	476	992
SEA	Domestic	94	67	161	110	86	196	106	75	181	86	76	162	396	304	700
	Paternity	29	44	73	21	28	49	17	33	50	25	33	58	92	138	230
SEA Total		123	111	234	131	114	245	123	108	231	111	109	220	488	442	930
KNT/SEA Total		225	206	431	269	241	510	261	235	496	249	236	485	1004	918	1922
		2007Q1			2007Q2			2007Q3			2007Q4			Year 2007		
Location	Case Type	DMOD	DTBA	Total	DMOD	DTBA	Total	DMOD	DTBA	Total	DMOD	DTBA	Total	DMOD	DTBA	Total
KNT	Domestic	113	48	161	108	76	184	128	47	175	123	60	183	472	231	703
	Paternity	25	17	42	22	18	40	29	10	39	14	9	23	90	54	144
KNT Total		138	65	203	130	94	224	157	57	214	137	69	206	562	285	847
SEA	Domestic	99	57	156	123	85	208	99	68	167	109	69	178	430	279	709
	Paternity	20	32	52	28	26	54	20	36	56	21	22	43	89	116	205
SEA Total		119	89	208	151	111	262	119	104	223	130	91	221	519	395	914
KNT/SEA Total		257	154	411	281	205	486	276	161	437	267	160	427	1081	680	1761
		2008Q1			2008Q2			2008Q3			2008Q4			Year 2008		
Location	Case Type	DMOD	DTBA	Total	DMOD	DTBA	Total	DMOD	DTBA	Total	DMOD	DTBA	Total	DMOD	DTBA	Total
KNT	Domestic	113	59	172	119	69	188							232	128	360
	Paternity	18	18	36	19	16	35							37	34	71
KNT Total		131	77	208	138	85	223							269	162	431
SEA	Domestic	103	65	168	108	95	203							211	160	371
	Paternity	17	17	34	17	23	40							34	40	74
SEA Total		120	82	202	125	118	243							245	200	445
KNT/SEA Total		251	159	410	119	69	188							514	362	876

* DMOD = parenting plan modification track; DTBA = support modification track.

Table 2. Number of Cases Resolved and Resolution Category (%)

King County Superior Court

Reporting Category	Q3/06	Q4/06	Q1/07	Q2/07	Q3/07	Q4/07	Q1/08	Q2/08*
Total Resolutions (excl. "Matters Filed with Clerk")	15392	14824	16420	17082	15743	15684	16287	16110
Criminal (excl. RALJ): # Resolved	2312	2424	2824	2966	2504	2485	2561	2377
Resolved by Jury Trial	2.5%	3.1%	3.2%	3.1%	2.6%	2.9%	3.0%	2.5%
Resolved by Non-Jury Trial	2.9%	3.7%	2.0%	2.5%	2.0%	2.0%	1.3%	1.6%
Resolved by Guilty Plea	79.8%	78.9%	77.2%	77.6%	78.5%	80.9%	77.9%	79.8%
Dismissal	14.6%	14.2%	17.5%	16.6%	16.8%	14.0%	17.5%	15.9%
Others	0.2%	0.1%	0.2%	0.2%	0.2%	0.2%	0.4%	0.2%
General Civil: # Resolved	7093	6239	6675	7410	7059	6540	6758	7030
Resolved by Jury Trial	0.3%	0.5%	0.5%	0.5%	0.2%	0.3%	0.4%	0.3%
Resolved by Non-Jury Trial	0.3%	0.5%	0.4%	0.3%	0.4%	0.4%	0.5%	0.5%
Summary Judgment	1.3%	1.5%	1.1%	1.6%	1.1%	1.2%	1.6%	1.6%
Default/ Uncontested	40.0%	34.0%	38.8%	41.7%	42.4%	38.3%	39.1%	42.6%
Arbitration	2.7%	3.0%	2.3%	2.8%	2.7%	2.5%	2.1%	2.4%
Settlement/Dismissal	52.6%	57.4%	55.0%	50.2%	50.9%	54.0%	52.5%	49.7%
Closure by Clerk	1.7%	1.9%	0.7%	1.9%	1.4%	2.3%	2.5%	1.5%
Others	1.0%	1.3%	1.3%	1.0%	0.9%	1.0%	1.4%	1.4%
Asbestos Cases (civil): # Resolved	57	16	50	92	40	8	88	79
Resolved by Jury Trial	0.0%	37.5%	0.0%	0.0%	0.0%	0.0%	0.0%	0.0%
Resolved by Non-Jury Trial	0.0%	0.0%	0.0%	0.0%	0.0%	0.0%	0.0%	0.0%
Summary Judgment	0.0%	0.0%	0.0%	1.1%	0.0%	0.0%	2.3%	7.6%
Default/ Uncontested	1.8%	0.0%	8.0%	4.4%	2.5%	12.5%	0.0%	1.3%
Arbitration	0.0%	0.0%	0.0%	0.0%	0.0%	0.0%	0.0%	0.0%
Settlement/Dismissal	87.7%	62.5%	34.0%	59.8%	90.0%	87.5%	38.6%	89.9%
Closure by Clerk	0.0%	0.0%	0.0%	0.0%	0.0%	0.0%	0.0%	1.3%
Others	10.5%	0.0%	58.0%	34.8%	7.5%	0.0%	59.1%	0.0%
Domestic: # Resolved	1928	1978	2041	1984	1844	1867	1810	1854
Resolved by Trial	3.4%	3.5%	4.1%	3.7%	3.1%	3.9%	4.2%	3.6%
Default/ Uncontested	9.0%	8.8%	9.5%	9.2%	8.6%	10.3%	9.9%	8.6%
Settlement /Dismissal	87.2%	87.2%	86.1%	86.2%	88.0%	84.4%	85.0%	86.5%
Closure by Clerk	0.3%	0.3%	0.1%	0.2%	0.1%	0.9%	0.7%	0.8%
Others	0.1%	0.2%	0.2%	0.7%	0.3%	0.5%	0.2%	0.5%
Probate: # Resolved	1150	1123	1520	1292	1430	1215	1747	1428
Personal Rep. Appointed	74.4%	75.1%	72.8%	75.5%	65.0%	77.6%	61.4%	70.1%
Dismissal	2.1%	2.5%	3.8%	3.0%	2.3%	2.1%	4.7%	4.4%
Closure by Clerk	0.0%	0.0%	0.0%	0.2%	0.3%	0.0%	0.0%	0.2%
Others	23.5%	22.4%	23.5%	21.4%	32.5%	20.3%	33.9%	25.3%
Guardianship: # Resolved	187	192	326	228	204	210	215	246
Guardian Appointed	52.9%	85.2%	31.3%	48.7%	55.4%	47.6%	47.9%	50.0%
Dismissal	46.0%	43.8%	67.8%	50.9%	44.6%	51.0%	47.4%	48.4%
Closure by Clerk	0.0%	0.0%	0.0%	0.0%	0.0%	0.0%	0.0%	0.4%
Others	1.1%	1.0%	0.9%	0.4%	0.0%	1.4%	4.7%	1.2%
Adoption: # Resolved	238	221	191	194	171	245	170	190
Resolved by Trial	0.0%	0.0%	1.1%	0.0%	0.6%	0.4%	0.6%	0.0%
Uncontested	0.4%	0.0%	10.0%	1.6%	1.2%	9.4%	4.7%	3.7%
Settlement /Dismissal	99.6%	100%	88.5%	97.9%	97.7%	89.8%	93.5%	95.8%
Closure by Clerk	0.0%	0.0%	0.0%	0.0%	0.0%	0.0%	0.0%	0.0%
Others	0.0%	0.0%	0.5%	0.5%	0.6%	0.4%	1.2%	0.5%
Paternity: # Resolved	389	327	276	342	365	364	307	339
Resolved by Trial	0.8%	2.1%	1.8%	1.5%	0.8%	1.9%	1.3%	1.5%
Summary Judgment	42.7%	37.9%	38.8%	31.3%	36.7%	30.8%	35.2%	38.1%
Default/ Uncontested	25.5%	24.2%	17.0%	27.8%	33.7%	33.0%	32.9%	28.6%
Settlement/Dismissal	30.9%	35.5%	42.4%	38.6%	28.8%	33.8%	30.3%	30.4%
Closure by Clerk	0.3%	0.3%	0.0%	0.9%	0.0%	0.3%	0.3%	1.2%
Others	0.0%	0.0%	0.0%	0.0%	0.0%	0.3%	0.0%	0.3%

Reflecting all documents received by 07/15/2008.

Asbestos cases are part of the general civil caseload, listed separately starting third quarter, 2004.

Table 2 (cont.). Number of Cases Resolved and Resolution Category (%)

King County Superior Court

Reporting Category	Q3/06	Q4/06	Q1/07	Q2/07	Q3/07	Q4/07	Q1/08	Q2/08*
Mental Illness: # Resolved	563	565	558	551	608	595	509	621
Court Decision to Commit	76.9%	73.8%	76.9%	75.8%	73.2%	72.9%	71.1%	74.2%
Closed by Court	0.0%	0.2%	0.5%	0.2%	0.0%	0.0%	0.0%	0.0%
Dismissal	16.5%	19.5%	16.1%	16.7%	18.4%	19.2%	17.3%	14.7%
Others	6.6%	6.6%	6.5%	7.3%	8.4%	7.9%	11.6%	11.1%
Juvenile Dependency: # Resolved	229	162	270	273	261	229	239	228
Finding of Dependency	83.0%	71.6%	85.6%	61.9%	71.7%	67.3%	61.5%	66.2%
Dismissal	15.3%	27.8%	14.1%	36.3%	28.4%	32.8%	37.2%	33.8%
Others	1.8%	0.6%	0.4%	1.8%	0.0%	0.0%	1.3%	0.0%
Juvenile ARY/CHINS: # Resolved	96	88	121	123	77	99	124	135
Approve of Petition	65.6%	48.9%	52.1%	48.8%	46.8%	47.5%	52.4%	37.8%
Dismissal	34.4%	51.1%	47.9%	51.2%	53.3%	52.5%	47.8%	62.2%
Others	0.0%	0.0%	0.0%	0.0%	0.0%	0.0%	0.0%	0.0%
Juvenile Truancy: # Resolved	230	400	671	621	220	817	834	632
Approve of Petition	4.8%	19.8%	47.5%	56.7%	6.8%	30.8%	69.1%	36.1%
Dismissal	95.2%	78.3%	51.6%	41.7%	93.2%	68.5%	30.9%	63.8%
Others	0.0%	2.0%	0.9%	1.6%	0.0%	0.6%	0.0%	0.2%
Juvenile Offender: # Resolved	840	999	818	919	876	925	824	875
Resolved by Trial (Fact Finding)	11.4%	6.5%	9.3%	7.6%	6.7%	6.4%	7.8%	6.5%
Resolved by Guilty Plea	41.3%	44.5%	39.5%	43.1%	38.7%	38.4%	39.9%	41.1%
Dismissal	22.7%	26.1%	36.4%	44.5%	49.0%	50.8%	49.4%	48.7%
Others (including Deferred Prosecution)	24.5%	22.8%	14.8%	4.8%	5.6%	4.4%	2.9%	3.7%
Criminal RALJ: # Resolved	58	67	53	66	55	69	66	56
RALJ Decision	53.5%	68.7%	54.7%	57.6%	69.1%	42.0%	60.6%	67.9%
Dismissal	37.9%	29.9%	41.5%	42.4%	29.1%	39.1%	31.8%	28.6%
Others	8.6%	1.5%	3.8%	0.0%	1.8%	18.8%	7.6%	3.6%
Civil RALJ: # Resolved	22	23	26	21	29	16	35	20
RALJ Decision	59.1%	47.8%	50.0%	57.1%	55.2%	56.3%	34.3%	45.0%
Dismissal	40.9%	43.4%	50.0%	42.9%	44.8%	39.5%	31.4%	55.0%
Others	0.0%	8.7%	0.0%	0.0%	0.0%	6.3%	34.3%	0.0%

* Reflecting all documents received by 07/15/2008.

Chart 2-A. Quarterly Resolutions
Total Judicial Cases Only ("Matters Filed with Clerk" excluded)

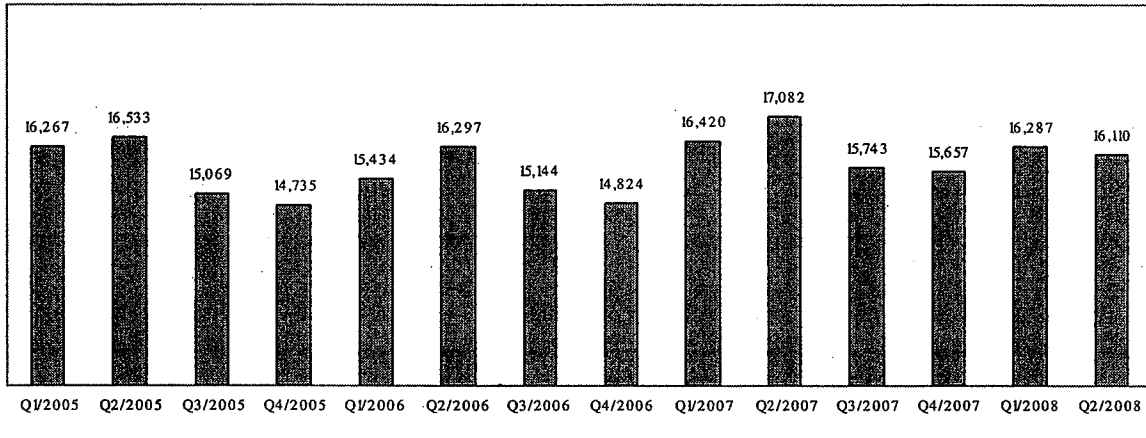
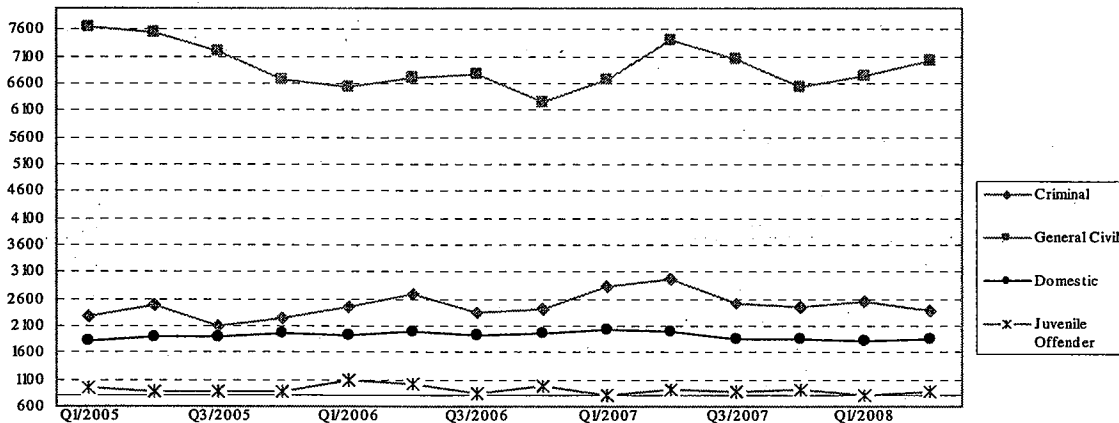


Chart 2-B. Quarterly Resolutions: Criminal, Domestic, General Civil and Juvenile Offender Cases Only



* Note: "General Civil" is specifically defined in this report. The category of "General Civil" does **not** include the following case types: domestic, probate, guardianship, adoption, paternity, mental illness, juvenile cases (dependency, at-risk youth, child-in-need of service, civil RALJ, and tax filings that don't require judicial resources ("matters filed with clerk"). Please check the Appendix for the cause codes in the "General Civil" category.

Table 3. Age of Resolved Cases
King County Superior Court

Reporting Category	Age of Cases at Resolution							
	Q3/06	Q4/06	Q1/07	Q2/07	Q3/07	Q4/07	Q1/08	Q2/08*
Criminal (excl. RALJ)								
Age (days)								
50% Cases Resolved by Day	67	73	79	70	80	82	85	79
90% Cases Resolved by Day	240	284	290	256	268	252	336	293
98% Cases Resolved by Day	569	676	486	645	638	345	819	719
Comparison with Court Standard of								
90% in 4 months	71%	68%	67%	71%	68%	65%	64%	66%
98% in 6 months	84%	81%	81%	83%	82%	80%	79%	79%
100% in 9 months	92%	89%	89%	91%	91%	91%	87%	87%
General Civil ⁽¹⁾								
Age (days)								
50% Cases Resolved by Day	22	30	29	27	16	28	28	19
90% Cases Resolved by Day	419	492	463	378	349	488	424	383
98% Cases Resolved by Day	685	776	560	704	698	623	772	695
Comparison with Court Standard of								
90% in 12 months	87%	85%	86%	89%	89%	85%	88%	91%
98% in 18 months	93%	92%	94%	95%	94%	91%	93%	96%
100% in 24 months	98%	97%	99%	99%	98%	97%	97%	99%
Domestic								
Age (days)								
50% Cases Resolved by Day	126	139	144	133	125	145	150	143
90% Cases Resolved by Day	337	330	332	334	326	334	337	341
98% Cases Resolved by Day	505	533	391	492	444	403	487	542
Comparison with Court Standard of								
90% in 8 months	75%	74%	73%	75%	76%	73%	73%	71%
98% in 10 months	84%	86%	83%	85%	84%	84%	82%	80%
100% in 14 months	97%	96%	97%	96%	97%	96%	95%	96%
Probate								
Age (days)								
50% Cases Resolved by Day	0	0	0	0	0	0	0	0
90% Cases Resolved by Day	10	11	112	20	538	6	631	36
98% Cases Resolved by Day	683	658	629	496	183	28	1410	883
Comparison with Court Standard of								
90% in 8 months	97%	97%	90%	95%	84%	97%	82%	93%
98% in 18 months	98%	98%	93%	98%	90%	98%	88%	96%
100% in 36 months	99%	100%	100%	99%	98%	99%	95%	99%
Guardianship								
Age (days)								
50% Cases Resolved by Day	61	61	132	63	60	60	72	62
90% Cases Resolved by Day	181	147	1905	341	161	232	827	303
98% Cases Resolved by Day	758	339	2475	1879	435	302	1932	1446
Comparison with Court Standard of								
90% in 8 months	93%	99%	58%	92%	92%	90%	78%	86%
98% in 18 months	95%	100%	66%	92%	99%	100%	85%	96%
100% in 36 months	99%	100%	76%	93%	100%	100%	92%	98%
Adoption								
Age (days)								
50% Cases Resolved by Day	81	59	71	63	70	112	106	75
90% Cases Resolved by Day	1834	249	1098	302	256	1429	1346	277
98% Cases Resolved by Day	2296	2207	1401	1228	900	1875	2251	466
Comparison with Court Standard of								
90% in 8 months	81%	89%	73%	86%	87%	64%	72%	83%
98% in 10 months	82%	91%	76%	90%	91%	67%	75%	88%
100% in 14 months	75%	94%	77%	94%	94%	69%	80%	96%
Paternity								
Age (days)								
50% Cases Resolved by Day	168	187	197	134	145	161	149	174
90% Cases Resolved by Day	312	319	325	317	288	302	291	371
98% Cases Resolved by Day	534	467	402	512	452	370	415	479
Comparison with Court Standard of								
90% in 8 months	78%	70%	63%	77%	83%	74%	78%	65%
98% in 10 months	87%	88%	85%	87%	90%	90%	92%	81%
100% in 14 months	96%	95%	96%	95%	96%	96%	99%	95%

Table 3 (cont.) Age of Resolved Cases

King County Superior Court

Reporting Category	Age of Cases at Resolution							
	Q3/06	Q4/06	Q1/07	Q2/07	Q3/07	Q4/07	Q1/08	Q2/08*
Mental Illness**								
Age (days)								
50% Cases Resolved by Day	2	2	3	2	3	3	4	4
90% Cases Resolved by Day	9	7	10	9	11	11	21	13
98% Cases Resolved by Day	19	13	20	28	49	19	402	46
Juvenile Dependency								
Age (days)								
50% Cases Resolved by Day	80	81	81	87	84	99	102	104
90% Cases Resolved by Day	214	482	261	724	876	999	1163	1035
98% Cases Resolved by Day	626	1487	517	2166	2411	1956	2527	2735
Comparison with Court Standard of								
90% in 8 months	91%	84%	90%	76%	80%	77%	69%	74%
98% in 10 months	92%	86%	94%	82%	81%	81%	75%	76%
100% in 14 months	94%	89%	94%	86%	83%	83%	79%	77%
Juvenile ARY/CHINS								
Age (days)								
50% Cases Resolved by Day	15	20	17	21	22	22	26	34
90% Cases Resolved by Day	117	230	183	226	205	230	220	230
98% Cases Resolved by Day	249	309	328	436	271	278	287	397
Comparison with Court Standard of								
90% in 8 months	98%	93%	91%	93%	93%	93%	95%	92%
98% in 10 months	99%	99%	93%	95%	98%	96%	98%	97%
100% in 14 months	100%	100%	96%	98%	100%	98%	100%	99%
Juvenile Truancy**								
Age (days)								
50% Cases Resolved by Day	146	98	66	63	209	73	35	38
90% Cases Resolved by Day	512	234	404	246	573	506	120	306
98% Cases Resolved by Day	562	549	693	750	809	630	784	511
Juvenile Offender								
Age (days)								
50% Cases Resolved by Day	50	54	56	53	55	59	58	54
90% Cases Resolved by Day	136	155	148	134	157	164	167	169
98% Cases Resolved by Day	211	414	188	231	302	243	400	324
Comparison with Court Standard of								
90% in 4 months	87%	85%	86%	87%	85%	83%	82%	82%
98% in 6 months	96%	92%	95%	96%	94%	91%	91%	91%
100% in 9 months	99%	96%	99%	100%	98%	95%	95%	97%
Criminal RALJ								
Age (days)								
50% Cases Resolved by Day	248	359	294	286	265	327	294	284
90% Cases Resolved by Day	524	656	563	554	491	603	494	574
98% Cases Resolved by Day	665	754	622	1018	502	644	602	829
Comparison with Court Standard of								
90% in 4 months	21%	7%	15%	6%	16%	14%	8%	11%
98% in 5 months	28%	10%	19%	9%	18%	20%	19%	20%
100% in 6 months	31%	13%	21%	9%	29%	21%	19%	21%
Civil RALJ								
Age (days)								
50% Cases Resolved by Day	209	165	177	236	185	200	191	151
90% Cases Resolved by Day	347	305	280	365	289	304	300	251
98% Cases Resolved by Day	667	463	282	412	649	318	408	294
Comparison with Court Standard of								
90% in 4 months	18%	35%	31%	29%	28%	19%	43%	40%
98% in 5 months	23%	39%	46%	29%	28%	25%	46%	50%
100% in 6 months	32%	56%	50%	29%	45%	31%	46%	65%

* Reflecting all documents received by 07/15/2008.

** No standard yet.

(1) Starting third quarter 2004, the general civil cases do not include asbestos cases.

Table 4. Active Pending Caseload Statistics
King County Superior Court

Reporting Category		Q3/06	Q4/06	Q1/07	Q2/07	Q3/07	Q4/07	Q1/08	Q2/08*
Total (incl. RALJ)									
Previous Pending	(+)	22904	22440	22189	22739	22395	22458	22566	21859
New Filing	(+)	15332	14745	16256	16303	15552	14917	15504	16141
Resolved	(-)	15392	14824	16420	17082	15743	15684	16287	16110
End Pending		22440	22189	22739	22395	22458	22566	21859	22398
Resolution Rate**		1.004	1.005	1.010	1.048	1.012	1.050	1.051	0.998
Criminal (excl. RALJ)									
Previous Pending	(+)	3403	3533	3829	4015	3998	3993	4154	3789
New Filing	(+)	2661	2783	2974	2705	2547	2540	2298	2390
Resolved	(-)	2312	2424	2824	2966	2504	2485	2561	2377
End Pending		3533	3829	4015	3898	3993	4154	3789	3817
Resolution Rate**		0.869	0.871	0.950	1.096	0.983	0.968	1.114	0.995
General Civil									
Previous Pending	(+)	8838	8730	8380	8412	8112	8182	8161	8080
New Filing	(+)	6624	5887	6295	6712	6733	6146	6397	7048
Resolved	(-)	7093	6239	6675	7410	7059	6540	6758	7030
End Pending		8730	8380	8412	8112	8182	8161	8080	8373
Resolution Rate**		1.071	1.060	1.060	1.104	1.048	1.064	1.056	0.997
Asbestos Cases (civil) ⁽¹⁾									
Previous Pending	(+)	547	518	561	547	524	548	558	484
New Filing	(+)	18	3	35	29	47	14	12	20
Resolved	(-)	57	16	50	92	40	8	88	79
End Pending		518	561	547	524	548	558	484	437
Resolution Rate**		3.167	5.333	1.429	3.172	0.851	0.571	7.333	3.950
Domestic									
Previous Pending	(+)	3798	3808	3641	3671	3782	3837	3773	3723
New Filing	(+)	1908	1805	1973	2043	1936	1762	1785	1931
Resolved	(-)	1928	1978	2041	1984	1844	1867	1810	1854
End Pending		3808	3641	3671	3782	3837	3773	3723	4012
Resolution Rate**		1.010	1.096	1.034	0.971	0.952	1.060	1.014	0.960
Probate									
Previous Pending	(+)	1011	1030	1082	1087	1117	972	994	776
New Filing	(+)	1222	1203	1497	1321	1306	1238	1525	1402
Resolved	(-)	1150	1123	1520	1292	1430	1215	1747	1428
End Pending		1030	1082	1087	1117	972	994	776	776
Resolution Rate**		0.941	0.933	1.015	0.978	1.095	0.981	1.146	1.019
Guardianship									
Previous Pending	(+)	583	602	617	500	502	499	512	487
New Filing	(+)	219	218	212	239	205	225	212	222
Resolved	(-)	187	192	326	228	204	210	215	246
End Pending		602	617	500	502	499	512	487	467
Resolution Rate**		0.854	0.881	1.538	0.954	0.995	0.933	1.014	1.108
Adoption									
Previous Pending	(+)	448	406	365	374	372	355	288	316
New Filing	(+)	196	179	198	190	152	177	196	188
Resolved	(-)	238	221	191	194	171	245	170	190
End Pending		406	365	374	372	355	288	316	314
Resolution Rate**		1.214	1.235	0.965	1.021	1.125	1.384	0.867	1.011
Paternity									
Previous Pending	(+)	746	570	468	613	695	660	558	554
New Filing	(+)	201	225	418	405	337	261	303	274
Resolved	(-)	389	327	276	342	365	364	307	339
End Pending		570	468	613	695	660	558	554	500
Resolution Rate**		1.935	1.453	0.660	0.844	1.083	1.395	1.013	1.237

* Reflecting all documents received by 07/15/2008.

** A value of "Resolution Rate" less than one indicates the resolution pace is slower than the filing pace.

(1) Asbestos cases are part of the general civil caseload, listed separately starting third quarter, 2004.

Starting Q1/2005, bankruptcy asbestos cases are treated as "resolved and completed", therefore no longer counted as "pending".

Table 4 (cont.) Active Pending Caseload Statistics
King County Superior Court

Reporting Category	Q3/06	Q4/06	Q1/07	Q2/07	Q3/07	Q4/07	Q1/08	Q2/08*
Mental Illness								
Previous Pending (+)	132	132	136	164	186	193	209	314
New Filing (+)	567	584	573	574	627	623	613	637
Resolved (-)	563	565	558	551	608	595	509	621
End Pending	132	136	164	186	193	209	314	330
Resolution Rate**	0.993	0.967	0.974	0.960	0.970	0.955	0.830	0.975
Juvenile Dependency								
Previous Pending (+)	499	477	557	594	604	603	620	649
New Filing (+)	208	243	286	246	222	217	227	238
Resolved (-)	229	162	270	273	261	229	239	228
End Pending	477	557	594	604	603	620	649	698
Resolution Rate**	1.101	0.667	0.944	1.110	1.176	1.055	1.053	0.958
Juvenile ARY/CHINS								
Previous Pending (+)	71	60	69	66	71	76	100	103
New Filing (+)	88	89	109	113	79	110	124	125
Resolved (-)	96	88	121	123	77	99	124	135
End Pending	60	69	66	71	76	100	103	108
Resolution Rate**	1.091	0.989	1.110	1.088	0.975	0.900	1.000	1.080
Juvenile Truancy								
Previous Pending (+)	1570	1200	1339	1444	1261	1182	1327	1368
New Filing (+)	189	496	624	680	198	603	840	635
Resolved (-)	230	400	671	621	220	817	834	632
End Pending	1200	1339	1444	1261	1182	1327	1368	1479
Resolution Rate**	1.217	0.806	1.075	0.913	1.111	1.355	0.993	0.995
Juvenile Offender								
Previous Pending (+)	990	1100	889	999	1017	1103	1059	991
New Filing (+)	1145	953	987	963	1078	923	899	956
Resolved (-)	840	999	818	919	876	925	824	875
End Pending	1100	889	999	1017	1103	1059	991	862
Resolution Rate**	0.734	1.048	0.829	0.954	0.813	1.002	0.917	0.912
Criminal RALJ								
Previous Pending (+)	218	222	207	204	202	211	195	182
New Filing (+)	64	57	50	63	63	50	54	57
Resolved (-)	58	67	53	66	55	68	66	56
End Pending	222	207	204	202	211	195	182	184
Resolution Rate**	0.906	1.175	1.060	1.048	0.873	1.380	1.222	0.982
Civil RALJ								
Previous Pending (+)	50	52	49	49	52	44	58	43
New Filing (+)	22	20	25	20	22	28	19	18
Resolved (-)	22	23	26	21	29	16	35	20
End Pending	52	49	49	52	44	58	43	41
Resolution Rate**	1.000	1.150	1.040	1.050	1.318	0.571	1.842	1.111

* Reflecting all documents received by 07/15/2008.

** A value of "Resolution Rate" less than one indicates the resolution pace is slower than the filing pace.

Chart 4-A. Active Pending Caseload at Quarter End
Total Judicial Cases Only ("Matters Filed with Clerk" excluded)

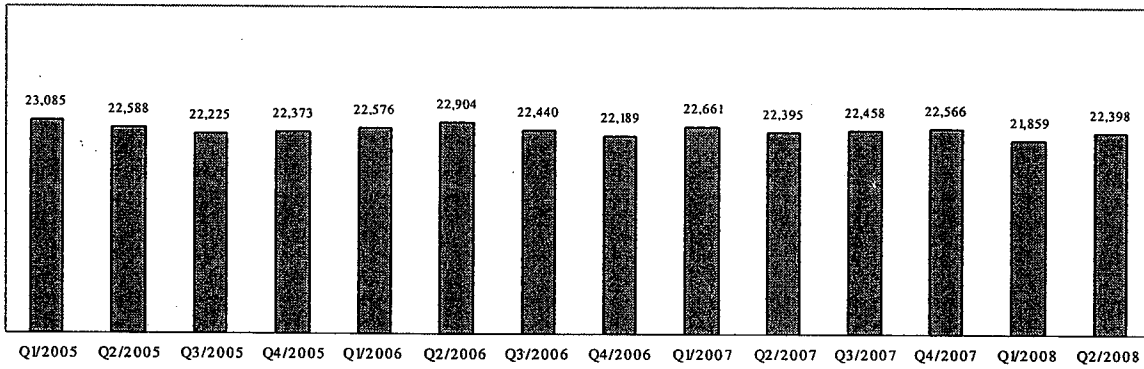


Chart 4-B. Active Pending Caseload at Quarter End: Domestic and General Civil Cases Only

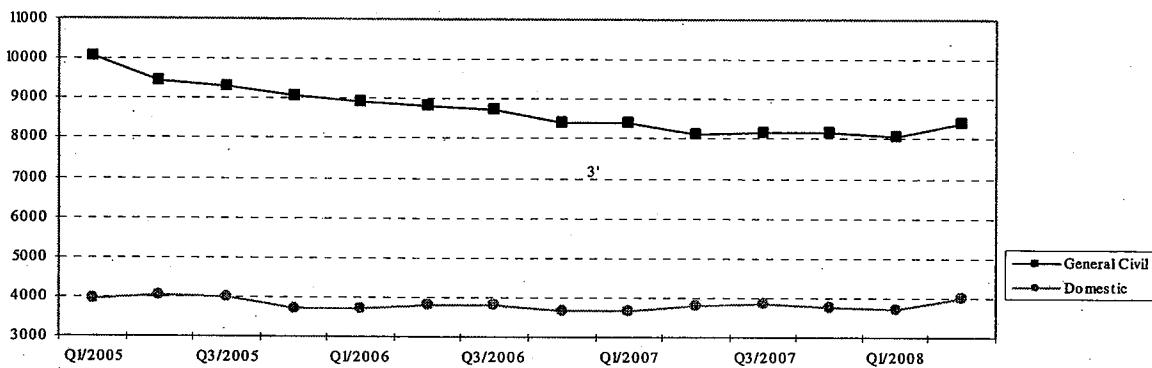
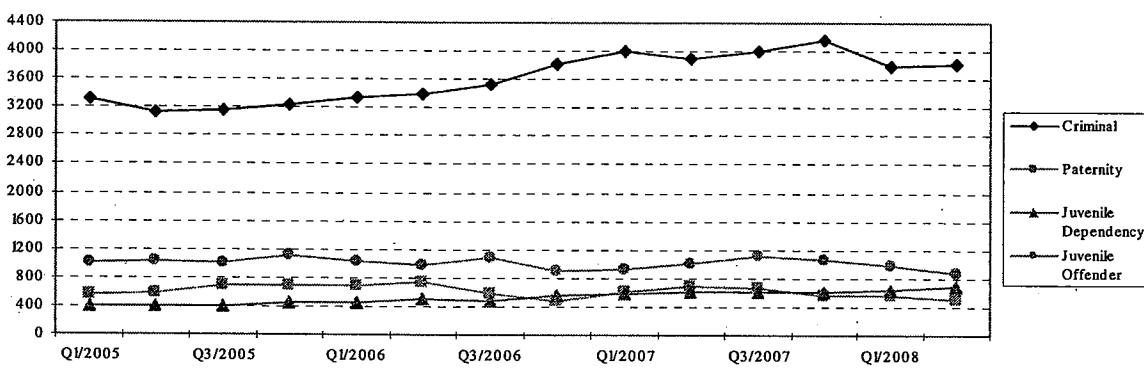


Chart 4-C. Active Pending Caseload at Quarter End:
Criminal, Juvenile Offender, Paternity and Dependency Cases Only



* Note: "General Civil" is specifically defined in this report. The category of "General Civil" does not include the following case types: domestic, probate, guardianship, adoption, paternity, mental illness, juvenile cases (dependency, at-risk youth, child-in-need of service, civil RALJ, and tax filings that don't require judicial resources ("matters filed with clerk"). Please check the Appendix for the cause codes in the "General Civil" category.

Table 5. Age of Pending Cases

King County Superior Court

Reporting Category	Age of Pending Cases and # of Cases in Each Age Interval							
	Q3/06	Q4/06	Q1/07	Q2/07	Q3/07	Q4/07	Q1/08	Q2/08*
Criminal (excl. RALJ): # of Cases	3533	3829	4015	3898	3993	4154	3789	3817
Age (days)								
Median (50 percentile)	89	86	79	88	96	95	104	104
95 percentile	997	921	880	887	931	959	994	945
# of Cases in Age Interval								
0 - 60 days (0 - 2 months)	1356	1469	1754	1506	1489	1518	1323	1288
61 - 120 days (3 - 4 months)	737	867	749	846	801	875	758	796
121 - 180 days (5 - 6 months)	426	434	448	485	510	465	436	416
181 - 270 days (7 - 9 months)	306	357	351	326	433	393	398	428
> 270 days (> 9 months)	708	702	713	735	759	903	874	889
General Civil: # of Cases	8730	8380	8412	8112	8182	8161	8080	8373
Age (days)								
Median (50 percentile)	169	172	158	152	156	146	147	136
95 percentile	697	656	681	691	704	650	627	612
# of Cases in Age Interval								
0 - 120 days (0 - 4 months)	3539	3272	3517	3441	3425	3526	3558	3915
121 - 240 days (5 - 8 months)	1847	1856	1822	1715	1815	1871	1773	1717
241 - 360 days (9 - 12 months)	1241	1200	1192	1041	998	1072	167	1060
361 - 540 days (13 - 18 months)	1272	1269	1092	1121	1097	981	1073	1056
541 - 720 days (19 - 24 months)	420	459	446	424	470	390	334	355
> 720 days (> 24 months)	411	324	343	370	377	321	275	270
Asbestos Cases (civil) ⁽¹⁾: # of Cases	518	561	547	524	548	558	484	437
Age (days)								
Median (50 percentile)	869	956	1046	1137	1197	1272	1308	1107
95 percentile	1828	1881	2003	1725	1817	1909	1762	1678
# of Cases in Age Interval								
0 - 120 days (0 - 4 months)	25	9	37	33	36	25	16	23
121 - 240 days (5 - 8 months)	54	25	11	34	38	36	28	20
241 - 360 days (9 - 12 months)	22	49	30	18	19	37	34	30
361 - 540 days (13 - 18 months)	44	36	56	56	43	20	35	50
541 - 720 days (19 - 24 months)	60	62	28	28	52	62	34	19
> 720 days (> 24 months)	313	380	385	355	360	378	337	295
Domestic: # of Cases	3808	3641	3671	3782	3837	3773	3723	4012
Age (days)								
Median (50 percentile)	96	100	87	88	95	104	102	101
95 percentile	347	347	343	325	345	343	354	363
# of Cases in Age Interval								
0 - 120 days (0 - 4 months)	2244	2096	2214	2355	2273	2123	2087	2270
121 - 240 days (5 - 8 months)	1040	999	945	909	1042	1061	1017	1085
241 - 360 days (9 - 12 months)	356	384	353	374	353	422	442	455
361 - 540 days (13 - 18 months)	112	100	107	82	104	105	111	137
> 540 days (> 18 months)	56	62	52	62	65	62	66	65
Probate: # of Cases	1030	1082	1087	1117	972	994	776	776
Age (days)								
Median (50 percentile)	375	389	394	424	425	476	440	439
95 percentile	2070	2105	2069	1989	2074	2155	2435	2450
# of Cases in Age Interval								
0 - 120 days (0 - 4 months)	196	186	202	179	165	113	163	172
121 - 240 days (5 - 8 months)	153	165	150	166	145	141	92	102
241 - 360 days (9 - 12 months)	148	155	154	155	125	144	77	80
361 - 540 days (13 - 18 months)	128	149	177	183	155	154	120	108
> 540 days (> 18 months)	405	437	394	434	433	442	324	314

Reflecting all documents received by 07/15/2008.

(1) Asbestos cases are part of the general civil caseload, listed separately starting third quarter, 2004.

Table 5 (cont.). Age of Pending Cases
King County Superior Court

Reporting Category	Age of Pending Cases and # of Cases in Each Age Interval							
	Q3/06	Q4/06	Q1/07	Q2/07	Q3/07	Q4/07	Q1/08	Q2/08*
Guardianship: # of Cases	602	617	500	502	499	512	487	467
Age (days)								
Median (50 percentile)	682	696	425	351	422	436	346	403
95 percentile	3134	3225	3225	3300	3400	3484	3583	3682
# of Cases in Age Interval								
0 - 120 days (0 - 4 months)	169	158	172	191	158	171	169	156
121 - 240 days (5 - 8 months)	42	54	39	34	58	37	47	42
241 - 360 days (9 - 12 months)	34	32	32	28	23	40	33	29
361 - 540 days (13 - 18 months)	37	43	21	29	34	26	26	31
> 540 days (> 18 months)	320	330	236	220	226	238	212	209
Adoption: # of Cases	406	365	374	372	355	288	316	314
Age (days)								
Median (50 percentile)	283	383	238	226	269	184	125	118
95 percentile	1872	1858	1880	1971	2063	1959	1890	1928
# of Cases in Age Interval								
0 - 120 days (0 - 4 months)	147	116	146	151	121	113	156	163
121 - 240 days (5 - 8 months)	48	39	42	42	49	44	53	43
241 - 360 days (9 - 12 months)	25	22	26	21	23	30	28	26
361 - 540 days (13 - 18 months)	24	28	26	23	25	20	24	22
> 540 days (> 18 months)	162	160	134	135	137	81	55	60
Paternity: # of Cases	570	468	613	695	660	558	554	500
Age (days)								
Median (50 percentile)	134	135	68	92	100	123	108	96
95 percentile	309	333	330	316	290	311	367	365
# of Cases in Age Interval								
0 - 120 days (0 - 4 months)	244	211	426	446	374	271	316	291
121 - 240 days (5 - 8 months)	247	170	111	199	224	204	129	135
241 - 360 days (9 - 12 months)	63	72	58	24	47	75	81	48
361 - 540 days (13 - 18 months)	14	15	18	25	13	8	27	24
> 540 days (> 18 months)	2	0	0	1	2	0	1	2
Mental Illness: # of Cases	132	136	164	186	193	209	314	330
Age (days)								
Median (50 percentile)	201	284	259	269	265	210	53	126
95 percentile	970	1062	960	1041	1133	1222	1109	1197
# of Cases in Age Interval								
0 - 120 days (0 - 4 months)	47	32	55	65	70	75	175	150
121 - 240 days (5 - 8 months)	22	26	23	25	22	36	34	51
> 240 days (> 8 months)	63	78	86	96	91	98	105	127
Juvenile Dependency: # of Cases	477	557	594	604	603	620	649	698
Age (days)								
Median (50 percentile)	185	167	151	142	221	285	259	277
95 percentile	698	832	915	1006	1098	1185	1260	1348
# of Cases in Age Interval								
0 - 60 days (0 - 2 months)	130	153	202	166	120	141	148	153
61 - 120 days (3 - 4 months)	67	99	68	106	80	81	86	103
121 - 180 days (5 - 6 months)	39	43	42	48	55	41	39	42
181 - 270 days (7 - 9 months)	39	42	37	30	75	40	56	45
> 270 days (> 9 months)	202	220	245	254	273	317	320	355
Juvenile ARY/CHINS: # of Cases	60	69	66	71	76	100	103	108
Age (days)								
Median (50 percentile)	94	80	97	68	103	74	110	118
95 percentile	694	782	872	963	1055	897	958	1049
# of Cases in Age Interval								
0 - 60 days (0 - 2 months)	27	29	30	32	28	48	35	35
61 - 120 days (3 - 4 months)	8	9	6	12	12	11	19	20
121 - 180 days (5 - 6 months)	7	7	5	4	12	6	16	9
181 - 270 days (7 - 9 months)	7	7	8	6	6	14	6	18
> 270 days (> 9 months)	11	17	17	24	18	21	27	26

* Reflecting all documents received by 07/15/2008.

Table 5 (cont.). Age of Pending Cases

King County Superior Court

Reporting Category	Age of Pending Cases and # of Cases in Each Age Interval							
	Q3/06	Q4/06	Q1/07	Q2/07	Q3/07	Q4/07	Q1/08	Q2/08*
Juvenile Truancy: # of Cases	1200	1339	1444	1261	1182	1327	1368	1479
Age (days)								
Median (50 percentile)	227	269	288	386	473	353	392	430
95 percentile	884	954	1006	1117	1227	1288	1379	1461
# of Cases in Age Interval								
0 - 60 days (0 - 2 months)	9	370	388	146	51	393	339	210
61 - 120 days (3 - 4 months)	252	85	158	163	90	28	96	257
121 - 180 days (5 - 6 months)	228	39	117	93	149	22	71	79
181 - 270 days (7 - 9 months)	192	180	44	141	125	116	24	93
> 270 days (> 9 months)	519	665	737	718	767	768	838	840
Juvenile Offender: # of Cases	1100	889	999	1017	1103	1059	991	862
Age (days)								
Median (50 percentile)	52	67	53	66	59	73	75	57
95 percentile	1086	1223	1268	1357	1420	1527	1632	587
# of Cases in Age Interval								
0 - 60 days (0 - 2 months)	620	411	537	485	569	459	425	444
61 - 120 days (3 - 4 months)	164	180	145	180	192	221	183	181
121 - 180 days (5 - 6 months)	63	75	73	92	61	88	103	72
181 - 270 days (7 - 9 months)	49	26	44	44	49	49	43	63
> 270 days (> 9 months)	204	197	200	216	232	242	237	102
Criminal RALJ: # of Cases	222	207	204	202	211	195	182	184
Age (days)								
Median (50 percentile)	169	170	186	172	166	168	164	142
95 percentile	575	544	527	477	559	514	496	440
# of Cases in Age Interval								
0 - 60 days (0 - 2 months)	47	39	38	42	38	38	46	37
61 - 120 days (3 - 4 months)	38	39	29	40	44	27	23	45
121 - 180 days (5 - 6 months)	40	32	33	25	34	37	27	19
181 - 270 days (7 - 9 months)	33	45	44	35	31	45	39	36
> 270 days (> 9 months)	64	52	60	60	64	48	47	47
Civil RALJ: # of Cases	52	49	49	52	44	58	43	41
Age (days)								
Median (50 percentile)	109	123	92	110	110	100	101	108
95 percentile	458	550	640	731	285	343	413	504
# of Cases in Age Interval								
0 - 60 days (0 - 2 months)	20	12	13	12	15	24	13	10
61 - 120 days (3 - 4 months)	8	12	19	16	12	10	13	14
121 - 180 days (5 - 6 months)	11	10	4	11	4	11	14	7
181 - 270 days (7 - 9 months)	6	8	5	9	10	7	6	3
> 270 days (> 9 months)	7	7	8	4	3	6	7	7

* Reflecting all documents received by 07/15/2008.

Juvenile offender cases do NOT include juvenile drug court cases.

Table 6. Seattle vs. Regional Justice Center (KNT): Filing, Resolution, Pending Caseload (%)

King County Superior Court

	Q2/07		Q3/07		Q4/07		Q1/08		Q2/08	
	SEA	KNT	SEA	KNT	SEA	KNT	SEA	KNT	SEA	KNT
Filings Total <i>(excl. filings with clerk)</i>	64%	36%	67%	33%	65%	35%	65%	35%	66%	34%
Criminal (excl. RALJ)	66%	34%	67%	33%	64%	36%	65%	35%	66%	34%
General Civil (excl. RALJ)	59%	41%	59%	41%	58%	42%	60%	40%	60%	40%
Domestic	60%	40%	62%	38%	61%	39%	62%	38%	63%	37%
Probate	77%	23%	80%	20%	79%	21%	76%	24%	76%	24%
Guardianship	57%	43%	58%	42%	61%	39%	59%	41%	60%	40%
Adoption	74%	26%	80%	20%	76%	24%	74%	26%	79%	21%
Paternity	51%	49%	53%	47%	57%	43%	43%	57%	56%	44%
Mental Illness	100%	---	100%	---	100%	---	100%	---	100%	---
Juvenile Dependency	52%	48%	62%	38%	52%	48%	59%	41%	50%	50%
Juvenile ARY/CHINS	40%	60%	56%	44%	53%	47%	52%	48%	54%	46%
Juvenile Truancy	33%	67%	39%	61%	42%	58%	40%	60%	35%	65%
Juvenile Offender	100%	---	100%	---	100%	---	100%	---	100%	---
Criminal RALJ	100%	---	100%	---	100%	---	100%	---	100%	---
Civil RALJ	100%	---	100%	---	100%	---	100%	---	100%	---
Resolution Total <i>(excl. filings with clerk)</i>	65%	35%	67%	33%	65%	35%	65%	35%	66%	34%
Criminal (excl. RALJ)	66%	34%	66%	34%	64%	36%	65%	35%	65%	35%
General Civil (excl. RALJ)	60%	40%	58%	42%	59%	41%	59%	41%	59%	41%
Domestic	62%	38%	61%	39%	61%	39%	60%	40%	61%	39%
Probate	76%	24%	82%	18%	78%	22%	79%	21%	75%	25%
Guardianship	62%	38%	59%	41%	62%	38%	70%	30%	53%	47%
Adoption	77%	23%	80%	20%	73%	27%	65%	35%	78%	22%
Paternity	54%	46%	56%	44%	53%	47%	46%	54%	51%	49%
Mental Illness	100%	---	100%	---	100%	---	100%	---	100%	---
Juvenile Dependency	48%	52%	57%	43%	57%	43%	60%	40%	59%	41%
Juvenile ARY/CHINS	42%	58%	56%	44%	51%	49%	55%	45%	59%	41%
Juvenile Truancy	35%	65%	67%	33%	43%	57%	41%	59%	51%	49%
Juvenile Offender	100%	---	100%	---	100%	---	100%	---	100%	---
Criminal RALJ	100%	---	100%	---	100%	---	100%	---	100%	---
Civil RALJ	100%	---	100%	---	100%	---	100%	---	100%	---
Pending Total <i>(excl. filings with clerk)</i>	70%	30%	70%	30%	69%	31%	70%	30%	69%	31%
Criminal (excl. RALJ)	62%	38%	63%	37%	63%	37%	64%	36%	64%	36%
General Civil (excl. RALJ)	73%	27%	72%	28%	72%	28%	72%	28%	71%	29%
Domestic	61%	39%	61%	39%	61%	39%	62%	38%	63%	37%
Probate	88%	12%	85%	15%	86%	14%	82%	18%	84%	16%
Guardianship	73%	27%	72%	28%	71%	29%	67%	33%	71%	29%
Adoption	57%	43%	57%	43%	55%	45%	62%	38%	63%	37%
Paternity	55%	46%	53%	47%	56%	44%	53%	47%	55%	45%
Mental Illness	100%	---	100%	---	100%	---	100%	---	100%	---
Juvenile Dependency	73%	27%	77%	23%	77%	23%	78%	22%	72%	28%
Juvenile ARY/CHINS	73%	27%	75%	25%	78%	22%	77%	23%	64%	36%
Juvenile Truancy	51%	49%	50%	50%	46%	54%	47%	53%	41%	59%
Juvenile Offender	100%	---	100%	---	100%	---	100%	---	100%	---
Criminal RALJ	100%	---	100%	---	100%	---	100%	---	100%	---
Civil RALJ	100%	---	100%	---	100%	---	100%	---	100%	---

Reflecting all documents received by 07/15/2008.

Table 7. Quarterly Utilization of Pro Tem Judges/Commissioners ⁽¹⁾

Category	Q4/05	Q1/06	Q2/06	Q3/06	Q4/06	Q1/07	Q2/07	Q3/07	Q4/07	Q1/08	Q2/08
Grand Total	2060	1905	2321	2386	2129	1855	2026	1712	1796	1780	2062
<i>Paid hours</i>	2060	1905	2321	2026	1950	1675	1846	1712	1796	1780	2062
<i>Donated hours</i>	---	---	---	360	179	180	180	---	---	---	---
Judge FTE Equivalent ⁽³⁾	4.6	4.2	5.2	5.3	4.7	4.1	4.5	3.8	4.0	4.0	4.6
By Work Type											
On Trial/Hearings	1810	1766	2209	1839	1661	1639	1876	1520	1568	1623	1910
On Preparation	210	119	101	188	366	166	145	192	220	157	153
Other or Unspecified Activity	41	19	11	0	101	50	4	1	9	0	0
By Case Type											
Criminal	526	570	560	541	311	458	321	171	120	145	126
Civil	381	504	532	394	564	448	542	534	792	892	916
Domestic	532	299	445	37	552	317	594	570	278	334	486
Probate	0	0	0	0	0	0	0	0	0	0	0
Guardianship	0	0	0	0	0	0	0	0	0	0	0
Adoption	0	0	0	0	0	0	0	0	0	0	0
Paternity	0	0	0	0	0	0	0	0	0	0	0
Mental Illness	0	0	0	0	0	0	0	0	0	0	0
Juvenile Dependency	83	18	105	29	25	6	14	0	4	0	0
Juvenile Truancy	71	36	88	79	0	37	86	17	164	10	94
Juvenile Offender	468	479	592	628	677	589	470	421	439	399	441
Other or Unspecified	0	0	0	0	0	0	0	0	0	0	0
By Calendar Type											
Criminal Plea	478	555	526	525	280	417	291	94	66	67	4
Criminal Trial	0	0	0	0	201	0	0	24	0	25	47
Civil Trial	199	328	186	139	0	168	188	108	84	68	1
Individual Calendar	0	0	0	0	0	0	0	0	0	0	0
Family Law	532	299	302	115	553	308	452	420	415	278	379
Ex Parte	150	153	317	220	234	172	267	246	352	632	572
Mental Illness	32	20	110	183	51	100	84	80	90	80	145
Juvenile Dependency	89	18	167	119	79	23	156	150	132	165	143
Juvenile CHINS/ARY	0	0	0	0	0	0	0	0	0	0	0
Juvenile Truancy	71	36	88	79	0	37	86	17	164	10	94
Juvenile Offender	462	479	592	628	674	589	470	420	439	399	441
Other or Unspecified	48	19	34	20	60	41	33	53	54	57	239
By Reason											
Congestion	1351	1406	1040	1018	1106	1039	947	511	554	702	892
Medical Coverage	121	154	117	121	331	112	121	338	299	164	69
Vacation	557	332	990	857	623	433	600	651	773	477	573
Training	16	13	175	31	69	265	358	212	221	437	529
Judicial Conference	15	0	0	0	0	6	0	0	0	0	0
Others	0	0	0	0	0	0	0	0	0	0	0

- (1) This table is based on the time sheet for compensation. Statistics prior to the second quarter of 1998 did not include special master and unpaid volunteer/visiting judges/commissioners.
- (2) Statistics since the second quarter of 1998 include hours of special master, all Pro Tem judges and commissioners (both paid position or volunteers), and unpaid help from district court judge(s) if applicable.
- (3) Judge FTE Equivalent = # of hours / [7.5 hours/day * 20 days/month * 3 months] = # of hours/450.
- (4) The large Pro Tem hours in the 2nd and 3rd quarters of 1998 reflected the vacant commissioner positions (both family law and Ex Parte).

* Include 80 hours of district judge's time (estimated retrospectively by RJC Superior Court Operations).

The statistics on Pro Tem judge/commissioner use provide information on the external help the court has obtained in order to handle the workload. The data are collected on the time sheet for compensation (therefore it does not include unpaid volunteering or visiting judges/commissioners). The database on Pro Tem judges/commissioners is managed by the Administrative Services Department (ASD) of King County Superior Court. The Pro Tem total hours presented in this section are provided quarterly by ASD.

Table 8. Family Law Activity

	3RD QTR, 2006		4TH QTR, 2006		1ST QTR, 2007		2ND QTR, 2007		3RD QTR, 2007		4TH QTR, 2007		1ST QTR, 2008		2ND QTR, 2008	
	HRGS	ORDS	HRGS	ORDS	HRGS	ORDS	HRGS	ORDS	HRGS	ORDS	HRGS	ORDS	HRGS	ORDS	HRGS	ORDS
SEATTLE																
FAM.LAW	901	2880	737	2802	686	2700	779	2891	818	2801	820	2772	692	2550	803	2367
DAILY AVG.	15	47	12	46	11	44	13	47	13	46	13	45	11	42	13	39
PATERNITY	957	3303	690	2878	642	2849	818	3361	874	3364	803	3301	629	2794	716	2830
DAILY AVG.	16	54	11	47	11	47	13	55	14	55	13	54	10	46	12	46
DOM. VIOL.	272	451	204	425	230	450	256	480	250	455	232	426	233	451	256	481
DAILY AVG.	4	7	3	7	4	7	4	8	4	7	4	7	4	7	4	8
KENT																
FAM.LAW	867	1489	733	1407	827	1663	649	1581	603	1614	607	1682	574	1632	643	1639
DAILY AVG.	14	24	12	23	14	27	11	26	10	26	10	28	9	27	11	27
PATERNITY	745	1429	523	1114	708	1436	545	1339	496	1358	489	1328	510	1421	446	1315
DAILY AVG.	12	23	9	18	12	24	9	22	8	22	8	22	8	23	7	22
DOM. VIOL.	276	417	246	422	232	404	272	435	262	381	251	427	227	399	216	421
DAILY AVG.	5	7	4	7	4	7	4	7	4	6	4	7	4	7	4	7
GRAND																
TOTAL	4018	9969	3133	9048	3325	9502	3319	10087	3303	9973	3202	9936	2865	9247	3080	9053
OVERALL																
DAILY AVG.	66	163	51	148	55	156	54	165	54	163	52	163	47	152	50	148

The statistics on family law and Ex Parte activity are obtained directly from SCOMIS using the appropriate docket codes.

Table 9. Ex Parte Activity

SEATTLE	3RD QTR, 2006		4TH QTR, 2006		1ST QTR, 2007		2ND QTR, 2007		3RD QTR, 2007		4TH QTR, 2007		1ST QTR, 2007		2ND QTR, 2007	
	HRGS	ORDS	HRGS	ORDS	HRGS	ORDS	HRGS	ORDS	HRGS	ORDS	HRGS	ORDS	HRGS	ORDS	HRGS	ORDS
ADOP/PAT	142	602	130	573	100	556	150	612	143	558	121	655	103	486	145	598
DOM. VIOL.	6	359	8	308	9	333	2	356	9	339	3	296	2	301	2	322
OTH. CIVIL	478	3966	441	3629	372	4485	386	3917	410	3759	320	3921	301	3944	328	4189
DOMESTIC	953	3091	953	2914	911	3002	936	3050	893	2846	826	3066	790	2594	839	2961
PROB/GDN	1477	3779	1394	3537	1623	4005	1672	3965	1616	3676	1497	3488	1122	3446	1040	3382
SUBTOTAL	3056	11797	2926	10961	3015	12381	3146	11900	3071	11178	2767	11426	2318	10771	2354	11452
DAILY AVG.	50	193	48	180	49	203	52	195	50	183	45	187	38	177	39	188

SEATTLE	3RD QTR, 2006		4TH QTR, 2006		1ST QTR, 2007		2ND QTR, 2007		3RD QTR, 2007		4TH QTR, 2007		1ST QTR, 2007		2ND QTR, 2007	
	HRGS	ORDS	HRGS	ORDS	HRGS	ORDS	HRGS	ORDS	HRGS	ORDS	HRGS	ORDS	HRGS	ORDS	HRGS	ORDS
ADOP/PAT	---	6	---	10	---	0	---	0	---	3	---	7	---	3	---	8
DOM. VIOL.	---	0	---	0	---	0	---	0	---	3	---	0	---	0	---	0
OTH. CIVIL	---	1317	---	1157	---	1236	---	1469	---	1451	---	1210	---	1339	---	1161
DOMESTIC	---	31	---	25	---	20	---	18	---	22	---	28	---	29	---	24
PROB/GDN	---	148	---	110	---	129	---	103	---	118	---	131	---	154	---	104
SUBTOTAL	---	1502	---	1302	---	1385	---	1590	---	1597	---	1376	---	1525	---	1297
DAILY AVG.	---	25	---	21	---	23	---	26	---	26	---	23	---	25	---	21

KENT	3RD QTR, 2006		4TH QTR, 2006		1ST QTR, 2007		2ND QTR, 2007		3RD QTR, 2007		4TH QTR, 2007		1ST QTR, 2007		2ND QTR, 2007	
	HRGS	ORDS	HRGS	ORDS	HRGS	ORDS	HRGS	ORDS	HRGS	ORDS	HRGS	ORDS	HRGS	ORDS	HRGS	ORDS
ADOP/PAT	57	277	38	233	43	237	36	184	29	198	36	209	34	190	38	204
DOM. VIOL.	2	403	0	325	1	344	2	388	1	361	1	315	1	301	3	338
OTH. CIVIL	298	1830	248	1831	252	1789	219	1916	204	1845	268	1801	293	2100	279	2041
DOMESTIC	339	1752	329	1694	377	1805	366	1628	343	1682	408	1642	419	1561	401	1771
PROB/GDN	305	1013	325	935	371	995	379	968	256	874	479	944	523	1139	511	1030
SUBTOTAL	1001	5275	940	5018	1044	5170	1002	5084	833	4960	1192	4911	1270	5291	1232	5384
DAILY AVG.	16	86	15	82	17	85	16	83	14	81	20	81	21	87	20	88

KENT	3RD QTR, 2006		4TH QTR, 2006		1ST QTR, 2007		2ND QTR, 2007		3RD QTR, 2007		4TH QTR, 2007		1ST QTR, 2007		2ND QTR, 2007	
	HRGS	ORDS	HRGS	ORDS	HRGS	ORDS	HRGS	ORDS	HRGS	ORDS	HRGS	ORDS	HRGS	ORDS	HRGS	ORDS
ADOP/PAT	---	7	---	2	---	6	---	3	---	1	---	2	---	2	---	4
DOM. VIOL.	---	0	---	0	---	1	---	0	---	0	---	1	---	0	---	0
OTH. CIVIL	---	592	---	622	---	512	---	774	---	707	---	688	---	772	---	711
DOMESTIC	---	15	---	13	---	18	---	9	---	0	---	9	---	18	---	16
PROB/GDN	---	45	---	42	---	48	---	49	---	34	---	32	---	56	---	39
SUBTOTAL	---	659	---	679	---	585	---	835	---	742	---	732	---	848	---	770
DAILY AVG.	---	11	---	11	---	10	---	14	---	12	---	12	---	14	---	13

EASTSIDE	3RD QTR, 2006		4TH QTR, 2006		1ST QTR, 2007		2ND QTR, 2007		3RD QTR, 2007		4TH QTR, 2007		1ST QTR, 2007		2ND QTR, 2007	
	HRGS	ORDS	HRGS	ORDS	HRGS	ORDS	HRGS	ORDS	HRGS	ORDS	HRGS	ORDS	HRGS	ORDS	HRGS	ORDS
ADOP/PAT	0	19	0	10	0	14	0	10	0	3	0	4	0	4	0	4
DOM. VIOL.	0	0	0	1	0	1	0	1	0	0	0	0	0	0	0	0
OTH. CIVIL	0	70	0	37	0	56	0	669	0	803	0	509	0	509	0	802
DOMESTIC	80	243	72	221	79	256	59	177	63	172	62	191	62	191	52	205
PROB/GDN	20	50	15	26	18	27	16	29	31	35	26	36	26	36	11	17
SUBTOTAL	100	382	87	295	97	354	75	886	94	1013	88	740	88	740	63	1028
DAILY AVG.	8	29	7	23	7	27	6	68	7	78	7	57	7	57	5	79

OVERALL	3RD QTR, 2006		4TH QTR, 2006		1ST QTR, 2007		2ND QTR, 2007		3RD QTR, 2007		4TH QTR, 2007		1ST QTR, 2007		2ND QTR, 2007	
	HRGS	ORDS	HRGS	ORDS	HRGS	ORDS	HRGS	ORDS	HRGS	ORDS	HRGS	ORDS	HRGS	ORDS	HRGS	ORDS
GRAND TOTAL	4157	19615	3953	18255	4156	19875	4223	20295	3998	19490	4047	19185	3676	19175	3649	19931
DAILY AVG.	68.1	321.6	64.8	299.3	68.1	325.8	69.2	332.7	65.5	319.5	66.3	314.5	60.3	314.3	59.8	326.7

Appendix Glossary and Definition

General Definition

Active Status

A case is active if it is not on suspense status (see Suspense Status).

Case

A case is defined as a filing with an assigned case number (or a case number plus a defendant connection code in pre-1990 criminal filings).

Completion

A case is completed when dispositive document is filed with the court following resolution.

Jury Trial

A hearing is reported as a jury trial if the jury is impaneled.

New Case

A new case is an original filing with new case number assigned.

Non-Jury Trial

A hearing is reported as a non-jury trial if an opening statement is made, waived, or reserved. A juvenile fact finding hearings is reported as a non-jury trial.

Pending Case

A case is defined as pending if it is unresolved and active (not in suspense).

Reactivated Case

A case returns to active status from suspense status during the reporting period.

Re-opened Cases

A case is re-opened if it has been previously completed but returns to the court for supplement or change of the original case resolution. A re-opened case does not have a new case number. Only resolved cases can be "re-opened". (Note: measurement not available as of July 1996. SCOMIS capacity may exist after conversion to DB2 in the future).

Resolution

A case is resolved if all issues in the complaint are fully adjudicated.

Suspended Case

A case is placed in suspense status from active status during the reporting period.

Suspense Status

A case is on suspense status if it is on warrant, appeal, stay, mediation, arbitration ("Deferred Prosecution" is not a suspense status, but is treated as a resolution).

Trial

A hearing set before a judge or jury in which all the issues in the case are meant to be resolved. A trial normally includes opening statements to the court or jury stating what the evidence will show, introduction of witnesses and exhibits for direct and cross examination, final arguments to the court or jury in which counsel argue both the evidence and the law, and judgment by the court or jury stating what the facts of the case are and what law applies to the facts. In a jury case, it also includes the selection of the jury. A trial can be held

for one or more cases. A single trial may be held to adjudicate more than one case (as defined above).

Post-resolution Modifications

In this report, we also report the post-resolution modifications for case type 3 (domestic) and 5 (paternity). These numbers are based on the tracks (DMOD and DTBA) opened after the original resolution date (i.e., if the track beginning date is after the resolution date).

Section I. Filing Activity

Additional Filings with Clerk

Filings with clerk without assigning a SCOMIS case number. This reporting category consists of search warrants, wire taps, extradition, oaths and orders pertaining to Pro Tem judge/commissioners/Court

Reporters/Bailiffs, and other "non-case" filings as recorded under 12050 system.

Annual Filings

Total number of new case filings during the calendar year (January 1 to December 31).

Adoption Cases

This reporting category includes the following "cause-of-action" codes within SCOMIS case type 5:

- Relinquishment (REL)
- Termination of Parent/Child Relationship (TER)
- Adoption (ADP)
- Miscellaneous (MSC)
- Name Change - Confidential (CHN)
- Initial Pre-Placement Report Filed with Clerk (PPR)

General Civil Cases

"General Civil" cases include all civil matters other than Domestic, Probate, Guardianship, Adoption, Paternity and appeals from courts of limited jurisdiction and "Matters Filed with Clerk". "General civil" cases include small claims as identified by the "Small Claim Track". This reporting category includes the following "cause-of-action" codes within SCOMIS case type 2:

- Administrative Law Review (ALR)
- Change of Name - Non-Confidential (CHN)
- Collection (COL)
- Commercial (COM)
- Condemnation (CON)
- Domestic Violence Protection (DVP)
- Emancipation of Minor (EOM)
- Foreclosure (FOR)
- Civil Harassment (HAR)
- Injunction (INJ)
- Other Malpractice (MAL)
- Medical Malpractice (MED)
- Meretricious Relationship (MER)
- Malicious Harassment (MHA)
- Miscellaneous (MSC)
- Minor Settlement (MST) - as of 10/1/96, under

Guardianship

- Petition of Civil Commitment- Sexual Predator (PCC)
- Property Fairness (PFA)
- Personal Injury (PIN)
- Property Damage (PRP)
- Quiet Title (QTI)
- Small Claims (LCA/LCI on "Small Claim Track")

- Seizure of Property from the Commission of a Crime (SPC)
- Seizure of Property Resulting from a Crime (SPR)
- Tort Motor Vehicle (TMV)
- Tort Other (TTO)
- Unlawful Detainer (UND)
- Wrongful Death (WDE)
- Writ of Habeas Corpus (WHC)
- Miscellaneous Writ (WMW)
- Writ of Mandamus (WRM)
- Writ of Restitution (WRR)
- Writ of Review (WRV)

Civil RALJ Cases

Civil appeals from courts of limited jurisdiction (excluding small claims as identified by the "Small Claim Track"). Civil RALJ includes the following "cause-of-action" reporting categories:

- Lower Court Appeal - Civil and "Not a Small Claim"
- Lower Court Appeal - Infraction and "Not a Small Claim"

Note: The Civil RALJ cases are determined based on both SCOMIS "cause-of-action" code (LCA and LCI) within SCOMIS case type 2 and the "Small Claim Track".

Criminal Cases (excl. RALJ)

Adult criminal cases, excluding appeals from courts of limited jurisdiction. This reporting category includes the following crime categories within SCOMIS case type 1:

- Homicide
- Sex Crime
- Robbery
- Assault
- Theft/Burglary
- Motor Vehicle Theft
- Controlled Substance
- Other Felony
- Others (Misdemeanor, Non-charge Case)

Criminal RALJ Cases

Criminal appeals from courts of limited jurisdiction. This reporting category includes all SCOMIS case type 1 cases that have an appeal from lower court field of "Yes".

Domestic Cases

This reporting category includes the following "cause-of-action" codes within SCOMIS case type 3:

- Child Custody (CUS)
- Dissolution with Children (DIC)
- Dissolution without Children (DIN)
- Foreign Judgment (FJU)
- Annulment/Invalidity (INV)
- Modification (with a new case number) (MOD)
- Miscellaneous (MSC)
- Mandatory Wage Assignment (MWA)
- Out-of-State Child Custody (OSC)
- Reciprocal, Respondent-in-County (RIC)
- Reciprocal, Respondent-out-of-County (ROC)
- Legal Separation (SEP)

Guardianship Cases

This reporting category includes the following "cause-of-action" codes within SCOMIS case type 4:

- Guardianship/Estate (G/E)
- Guardianship (GND)
- Limited Guardianship (LGD)
- Minor Settlement (MST)

Juvenile ARY/CHINS Cases

Juvenile dependency cases, excluding truancy cases and DEP cause code. This reporting category includes following "cause-of-action" codes within SCOMIS case type 7:

- Alternative Residential Placement (ARP)
- At-Risk Youth (ARY)
- Child in Need of Service (CNS)
- Termination (TER)

Juvenile Dependency Cases

This reporting category includes following "cause-of-action" codes within SCOMIS case type 7:
Dependency (DEP)

Juvenile Offender Cases

This reporting category includes the following crime categories in SCOMIS case type 8:

- Homicide
- Sex Crime
- Robbery
- Assault
- Theft/Burglary
- Motor Vehicle Theft
- Controlled Substance
- Other Felony
- Others (Misdemeanor, Non-charge Case)

Juvenile Truancy Cases

Mandatory truancy filings started on 10/01/1995. This reporting category includes the following "cause-of-action" code within SCOMIS case type 7:
Truancy (TRU)

Matters Filed with Clerk

Filings with clerk (case numbers assigned), but requiring little or no judicial action. This reporting category includes the following "cause-of-action" codes within SCOMIS case type 2:

- Abstract of Judgment (ABJ)
- Foreign Judgment (FJU)
- Tax Warrant (TAX)
- Transcripts of Judgment (TRJ)

Mental Illness Cases

This reporting category includes all "cause-of-action" codes within SCOMIS case type 6:

- Alcoholic Treatment (ALT)
- Mental Illness - Adult (MI)
- Mental Illness - Juvenile (MIJ)

Paternity Cases

This reporting category includes the following "cause-of-action" codes within SCOMIS case type 5:

- Modification (MOD)
- Paternity (PAT)
- Paternity/URESA/UIFSA (PUR)

Probate Cases

This reporting category includes the following "cause-of-action" codes within SCOMIS case type 4:

- Absentee (ABS)
- Disclaimer (DSC)
- Estate (EST)
- Foreign Will (FNW)
- Miscellaneous (MSC)
- Non-Probate Notice to Creditors (NNC)
- Will Only (WLL)

Total Cases

New cases with case numbers assigned, excluding "Matters Filed with Clerk" and "Additional Filings with Clerk".

Year-to-Date Filings

Total number of new filings since the beginning of calendar year (January 1) to the end of reporting period.

Section II. Resolution Category

Adoption - Resolved by Trial

Court Decision after Non-Jury Trial (CDAT)

Adoption - Uncontested

Consolidated Case (CONS)
Uncontested Resolution (UNDS)

Adoption - Settlement/Dismissal

Closed by Court Order after a Hearing (CLCO)
Dismissal without Trial (DSM)
Dismissal after Non-Jury Trial Commencement (DAT)
Settled after Non-Jury Trial Commencement (SAT)
Settled by Parties/Agreed Judgment (STPR)

Adoption - Closure by Clerk

Dismissal/Closure by Clerk (DSCK)

Adoption - Others

Change of Venue/Jurisdiction (CHV)
Other Non-specified Resolutions

Civil - Resolved by Jury Trial

Jury Verdict after Trial (JVAT)

Civil - Resolved by Non-Jury Trial

Court Decision after Non-Jury Trial (CDAT)

Civil - Summary Judgment

Summary Judgment (SMJG)

Civil - Default/Uncontested

Consolidated Case (CONS)
Default Judgment (DFJG)
Uncontested Resolution (UNDS)

Civil - Arbitration

Settle by Arbitration (ARBA)

Civil - Settlement/Dismissal

Closed by Court Order after a Hearing (CLCO)
Dismissal after Non-Jury Trial (DAT)
Dismissal after Jury Trial (DJT)
Dismissal (DSM)
Settled after Non-Jury Trial Commencement (SAT)
Settled after Jury Trial Commencement (SJT)
Settled by Parties/Agreed Judgment (STPR)

Civil - Closure by Clerk

Dismissal/Closure by Clerk (DSCK)

Civil - Others

Transferred to Federal bankruptcy Court (BANK)
Change of Venue/Jurisdiction (CHV)
Other Non-specified Resolutions

Civil RALJ - RALJ Decision

Court Decision to Affirm Appeal/review (CDTA)
Court Decision to Modify Appeal/Review (CDTM)
Court Decision to Reverse Appeal/review (CDTR)

Civil RALJ - Dismissal

Dismissal and Remand of Appeal/Review (DSRM)

Civil RALJ - Others

Other Non-specified Resolutions

Comparison with Court Standard

Percentage of cases actually falling within the Court's standard benchmark.

Court Standard

Benchmarks set by a state advisory committee and adopted by the court indicating percentage of cases to be resolved at certain age (in months, 1 month = 30 days as used in the Advisory Case Processing Time Standard as published in the Court Rule).

Court standard is based on timelines as suggested by State Advisory Committee. For a case type with no time standard, the standard for a similar case type is adopted if appropriate.

Criminal: 90% by 4 months, 98% by 6 months, 100% by 9 months.

Civil: 90% by 12 months, 98% by 18 months, 100% by 24 months.

Domestic: 90% by 8 months, 98% by 10 months, 100% by 14 months.

Probate/Guardianship: 90% by 8 months, 98% by 18 months, 100% by 36 months.

Adoption/Paternity: 90% by 8 months, 98% by 10 months, 100% by 14 months.

Mental Illness/Juvenile Truancy: No standard yet.

Juvenile Dependency: 90% by 8 months, 98% by 10 months, 100% by 14 months.

Juvenile Offender: 90% by 4 months, 98% by 6 months, 100% by 9 months.

Criminal RALJ/Civil RALJ: 90% by 4 months, 98% by 5 months, 100% by 6 months.

Criminal - Resolved by Jury Trial

Acquittal by Jury (AQJV)
Convicted - Jury Verdict after Trial (CVJV)

Criminal - Resolved by Non-Jury Trial

Acquittal by Court (AQCT)
Convicted - Court Decision after Non-Jury Trial (CVCT)

Criminal - Resolved by Guilty Plea

Guilty Plea (GP)
Guilty Plea after Non-Jury Trial Commencement (GPAT)
Guilty Plea after Jury Trial Commencement (GPJT)

Criminal - Dismissal

Dismissal after Non-Jury Trial Commencement (DAT)
Dismissal after Jury Trial Commencement (DJT)
Dismissal (DSM)

Criminal - Others

Change of Venue (CHV)
Consolidated Case (CONS)
Continued Order of Prosecution with Completion (CTOP)*
Deferred Prosecution (DFPD)
Dismissal/Closure by Clerk (DSCK)
Governor's warrant (GW)
Not Guilty by Reason of Insanity (NGRI)
Uncontested Resolution (UNDS)
Waiver of Extradition (WE)
Other Non-specified Resolutions

* Note: For adult criminal cases, "CTOP" does not necessarily constitute resolution. An adult criminal case with a "CTOP" as resolution code is counted as a resolved case only if a completion code exists along with the "CTOP". If the resolution code is CTOP and there is no completion code, then the case is treated as unresolved. The primary reason for combining "CTOP" with a completion code is to determine resolution for drug court cases (CTOP is entered in the SCOMIS resolution field as soon as a defendant enrolls in Drug Court). This rule on "CTOP" applies to adult criminal cases only.

Criminal RALJ - RALJ Decision

Court Decision to Affirm Appeal/review (CDTA)
Court Decision to Modify Appeal/Review (CDTM)
Court Decision to Reverse Appeal/review (CDTR)

Criminal RALJ - Dismissal

Dismissal and Remand of Appeal/Review (DSRM)

Criminal RALJ - Others

Other Non-specified Resolutions

Domestic - Resolved by Trial

Court Decision after Non-Jury Trial (CDAT)

Domestic - Default/Uncontested

Consolidated Case (CONS)
Default Judgment (DFJG)
Uncontested Resolution (UNDS)

Domestic - Settlement/Dismissal

Settled by Arbitration (ARBA)
Closed by Court Order after a Hearing (CLCO)
Dismissal after Non-Jury Trial Commencement (DAT)
Dismissal (DSM)
Settled after Non-Jury Trial Commencement (SAT)
Settled by Parties/Agreed Judgment (STPR)

Domestic - Closure by Clerk

Dismissal/Closure by Clerk (DSCK)

Domestic - Others

Change of Venue/Jurisdiction (CHV)
Summary Judgment (SMJG)
Other Non-specified Resolutions

Guardianship - Guardian Appointed

Guardian Appointed (PRGA)

Guardianship - Dismissal

Closed by Court Order after a Hearing (CLCO)
Dismissal (DSM)

Guardianship - Closure by Clerk

Dismissal/Closure by Clerk (DSCK)

Guardianship - Others

Change of Venue/Jurisdiction (CHV)
Consolidated Case (CONS)
Uncontested Resolution (UNDS)
Other Non-specified Resolutions

Juvenile Dependency - Finding of Dependency

Approved Petition (APP)

Juvenile Dependency - Dismissal

Dismissal (DSM)

Juvenile Dependency - Others

Change of Venue/Jurisdiction (CHV)
Consolidated Case (CONS)
Transfer of Jurisdiction (TRJU)
Other Non-specified Resolutions

Juvenile Offender - Resolved by Trial

Acquittal by Court (AQCT)
Convicted - Court Decision after Adjudictory Hearing (CVCT)

Juvenile Offender - Resolved by Guilty Plea

Guilty Plea before Adjudictory Hearing Commencement (GP)
Guilty Plea after Adjudictory Hearing Commencement (GPAT)

Juvenile Offender - Dismissal

Dismissal after Adjudictory Hearing Commencement (DAT)
Dismissal (DSM)

Juvenile Offender - Others

Change of venue (CHV)
Dismissal/Closure by Clerk (DSCK)
Consolidated Case (CONS)
Continued Prosecution (CTOP)
Decline of Jurisdiction (DECL)
Uncontested Resolution (UNDS)
Other Non-specified Resolutions

Juvenile Truancy - Finding of Truancy

Approved Petition (APP)

Juvenile Truancy - Dismissal

Dismissal (DSM)

Juvenile Truancy - Others

Change of Venue (CHV)
Consolidated Case (CONS)

Transfer of Jurisdiction (TRJU)
Other Non-specified Resolutions

Mental Illness - Court Decision to Commit

Court Decision to Commit (CDTC)

Mental Illness - Closed by Court

Closed by Court (CLCO)

Mental Illness - Dismissal

Dismissal (DSM)

Mental Illness - Others

Change of Venue/Jurisdiction (CHV)
Uncontested Resolution (UNDS)
Other Non-specified Resolutions

Paternity - Resolved by Trial

Court Decision after Non-Jury Trial (CDAT)

Paternity - Summary Judgment

Summary Judgment (SMJG)

Paternity - Default/Uncontested

Consolidated Case (CONS)
Default Judgment (DFJG)
Uncontested Resolution (UNDS)

Paternity - Settlement/Dismissal

Settled by Arbitration (ARBA)
Closed by Court Order after a Hearing (CLCO)
Dismissal after Non-Jury Trial Commencement (DAT)
Dismissal (DSM)
Settled after Non-Jury Trial Commencement (SAT)
Settled by Parties/Agreed Judgment (STPR)

Paternity - Closure by Clerk

Dismissal/Closure by Clerk (DSCK)

Paternity - Others

Change of Venue (CHV)
Other Non-specified Resolutions

Percentile

Percent of cases resolved at a given age. For example, if resolved cases had a 98 percentile of 12 months, it means that 98% of the cases were resolved within the age of 12 months, or conversely 2% of the cases were resolved after 12 months, not counting suspense time.

Probate - Personal Representative Appointed

Non-Intervention Probate (NIP)
Personal Representative Appointed (PRGA)

Probate - Dismissal

Closed by Court Order after a Hearing (CLCO)
Dismissal (DSM)

Probate - Closure by Clerk

Dismissal/Closure by Clerk (DSCK)

Probate - Others

Change of Venue (CHV)
Consolidated Case (CONS)
Uncontested Resolution (UNDS)
Other Non-specified Resolutions

Section III. Pending Caseload

Adjustment

Adjustment made because of vacating of resolutions, or change in suspense status between two reporting period.

End Pending

Total number of pending cases at the end of reporting period.

Previous Pending

Total number of pending cases at the beginning of reporting period.

Resolution Rate

Resolution rate is defined as the ratio of number of resolutions to number of new filings (i.e., number of resolutions divided by number of new filings) during the reporting period. The resolution rate measures the relative pace of resolution in relation to the pace of new filings. A resolution rate of greater than 1 indicates the number of resolutions exceeds the number of new filings.

On-review Status

Cases that have been resolved (post-resolution) but still need court resources for periodic review and other remaining outstanding issues.

Probate (EST), Paternity (PAT) and Dependency (DEP): Resolved and not completed (paternity or dependency established, but outstanding issues remain).

Guardianship (GDN,LGD,G/E): Resolved and on tracks of G1,G2,G3,GE or GD; Minor Settlement (MST): Resolved with a future hearing date.

Section IV. Age of Pending Cases

Case Age

The age of a case is the time (number of days) since the filing date, less any suspense time if applicable.

Median Age

The median age is the time that 50% of the cases are under and 50% are above the given age. For example, if pending cases have a median age of 12 months, it means that 50% of the pending cases are within the age of 12 months, and 50% of pending cases are over 12 months. The median age is more robust to cases with extreme age values than the average age.

Suspense Time

Time (days) that a case is on suspense status before its resolution. If a case has more than one suspense between filing and resolution, the suspense time is the total from all suspenses. Time on suspense status after resolution (e.g., appeals) is not counted.

Backlogged Cases

Active pending cases with an age exceeding the court-adopted time standard for each specific case type (recommended by the State Advisory Committee, see definition for *Court Standard*).

King County Superior Court
2007 Annual Statistical Report

Department of Judicial Administration
Prepared by: Shiquan Liao, Ph.D., Statistician

January 20, 2008

Report #: YR-2007

2007 Highlights

This 2007 annual statistical report presents information on filings, resolutions, pending caseload, and trials in King County Superior Court (KCSC). Statistics for 2007 have been updated at the end of 2007. Because of the year-end adjustment, a slight difference may exist between the statistics in this annual report and the statistics in the quarterly reports. The annual report data will be used as baselines for 2006 reports.

- **Filings** (Table 1). The total number of cases filed in 2007 was almost identical to that in 2006. In 2007, the total filings (including "Matters Filed with Clerk") were 75,841 cases, a 1.6% increase (+1.6%) from 2006. However, the change in filings was non-uniform across filing categories. In 2007, criminal filings were very high. The criminal filings were 10,767 cases in 2007, showing an increase of 1.1% from 2006. General civil filings (case type 2, excluding Clerk's filings and civil RALJ) were 2.2% higher than that in 2007 (+2.2%). Domestic filings were almost identical to the filings in 2006. Significant decrease in filings was observed in adoption, criminal RALJ, and juvenile offender cases in 2007 when compared with 2006. In addition, there were 1,761 post-disposition modifications in the domestic and paternity cases in 2007.
- **Resolutions** (Table 2). The total resolutions (including "Matters Filed with Clerk") in 2007 were 76,972 cases, showing a 3.7% increase (+3.7%) from 2006. The total resolutions exceeded the total filings in 2007. In 2007, the disposition pace of adult criminal cases exceeded the filing pace. The resolution pace in juvenile offender cases was slightly slower than the filing volume in 2007, with filings exceeding resolutions by 255 cases. Resolutions of paternity were also lower than the filing pace. The resolution pace for general civil cases, probate, and dependency slightly exceeded the filing volume in 2007. No significant gap was observed between the filings and resolutions for all other categories in 2007.
- **Pending Caseload** (Table 3). The overall pending caseload at the end of 2007 was 22,566 cases, showing an overall increase of 1.7% from 2006 (+1.7%). The pending criminal cases remained at an extremely high volume at the end of 2007 (4,154 cases), showing no sign of improvement. The juvenile offender caseload showed a significant increase at the end of 2007 when compared to a year ago. The court continued to make significant improvement in reducing the pending general civil caseload (-2.5%) in 2007. However, the court was unable to reduce the pending caseload for criminal, domestic, paternity, mental illness, juvenile dependency/termination, and juvenile offender categories in 2007. The major increase in pending caseload is in the criminal category, the pending caseload increased by 78% between 2002 and 2007 (from 2,326 cases to 4,154 cases).
- **Trials**. Overall, there were 501 jury trials in 2007. There were 599 non-jury trials and 904 juvenile fact-finders in 2007. In addition, there were 301 trials by affidavits in 2007.
- **KNT vs. SEA** (Table 4). Of the total 75,841 cases filed in 2007, 35% were KNT cases. However, no cases in the following categories were assigned to KNT: mental illness, juvenile offender, criminal RALJ and civil RALJ. The KNT resolutions (35%, as a percentage of total resolution in KCSC) in 2007 were comparable with the KNT assignment (35%). At the end of 2007, the KNT pending caseload was 31% of that of the entire court, including all case categories. In 2007, filings at KNT in the three major case categories (criminal, civil and domestic cases) were all about 39% of the total filings in the respective categories.

Table 1. Annual Filings

Category	Annual Filings										2006-2007 Change (%)
	1998	1999	2000	2001	2002	2003	2004	2005	2006	2007	
Criminal	9,589	10,130	10,806	10,526	9,306	10,026	9,962	9,901	10,648	10,767	1.1%
Civil (excluding RALJ and Matters Filed with Clerk)	22,112	21,947	23,072	23,376	24,566	27,304	27,567	26,915	25,469	26,020	2.2%
Civil Matters Filed with Clerk ⁽¹⁾	8,149	7,821	8,768	9,660	10,779	12,781	11,630	12,332	12,536	12,784	2.0%
Domestic	8,931	8,732	8,543	8,151	7,975	7,525	7,507	7,837	7,750	7,720	-0.4%
Probate	4,693	5,054	4,976	5,016	4,808	4,857	5,082	4,876	5,136	5,363	4.4%
Guardianship	902	966	871	859	885	984	832	831	875	885	1.1%
Adoption	883	916	951	809	874	877	884	846	751	717	-4.5%
Paternity	2,416	2,319	2,064	2,016	1,754	1,555	1,508	1,394	1,199	1,421	18.5%
Mental Illness	1,992	1,916	1,920	2,148	2,068	2,189	2,317	2,342	2,225	2,397	7.7%
Juvenile At-Risk Youth and Child-in-Need-of-Service	686	692	848	600	574	526	478	399	413	411	-0.5%
Juvenile Dependency/Termination	970	922	829	1,041	955	975	968	887	945	971	2.8%
Juvenile Truancy ⁽²⁾	3,917	3,652	4,301	3,636	1,796	1,874	1,755	1,803	2,204	2,111	-4.2%
Juvenile Offender	8,650	7,419	6,121	5,142	5,208	5,497	4,788	4,085	4,178	3,954	-5.4%
Criminal RALJ	476	465	476	352	306	308	261	287	247	225	-8.9%
Civil RALJ	216	168	205	153	115	140	112	119	93	95	2.2%
Total	74,582	73,119	74,751	73,485	71,969	77,418	75,651	74,854	74,669	75,841	1.6%
Post-disposition Modifications (domestic/paternity)							1,991	1,838	1,812	1,761	-2.8%

(1) The statistics in this table include "Civil Matters Filed with Clerk", which are reported separately in the quarterly report. "Civil Matters Filed with Clerk" consist of those civil cases that require no or little judicial resources. This category includes the following cause codes of civil actions: Abstract of Judgment, Foreign Judgment, Tax Warrant, and Transcript of Judgment.

(2) Juvenile truancy filing became mandated on 10/1/1995.

Table 2. Annual Resolutions

Category	Annual Resolutions										2006-2007 Change (%)
	1998	1999	2000	2001	2002	2003	2004	2005	2006	2007	
Criminal	8,768	9,627	10,434	9,978	9,928	8,959	9,516	9,478	9,937	11,051	11.2%
Civil (excluding RALJ and Matters Filed with Clerk)	21,664	21,910	22,306	23,242	23,962	27,245	28,035	29,556	26,436	26,792	1.3%
Civil Matters Filed with Clerk ⁽¹⁾	8,146	7,823	8,766	9,663	10,775	12,772	11,619	12,334	12,536	12,784	2.0%
Domestic	8,796	8,757	8,509	8,161	8,340	7,749	7,659	7,689	7,825	7,705	-1.5%
Probate	4,652	4,972	4,712	4,902	4,733	4,735	4,984	4,688	4,864	5,438	11.8%
Guardianship	902	912	884	802	856	839	821	743	793	971	22.4%
Adoption	884	944	943	808	848	913	834	830	781	800	2.4%
Paternity	2,457	2,508	2,118	1,973	2,061	1,511	1,791	1,344	1,429	1,344	-5.9%
Mental Illness	1,969	1,877	1,893	2,096	2,127	2,133	2,336	2,372	2,165	2,329	7.6%
Juvenile At-Risk Youth and Child-in-Need-of-Service	734	706	677	621	540	488	526	423	426	404	-5.2%
Juvenile Dependency/Termination	1,137	940	691	844	881	1,549	1,297	766	849	1,035	21.9%
Juvenile Truancy ⁽²⁾	5,760	3,145	3,280	4,482	1,734	2,407	2,149	1,412	1,856	2,293	23.5%
Juvenile Offender	8,781	7,631	6,477	5,643	4,932	5,073	4,662	3,766	3,958	3,699	-6.5%
Criminal RALJ	478	494	559	482	377	349	304	260	268	238	-11.2%
Civil RALJ	223	207	175	207	151	108	137	104	112	89	-20.5%
Total	75,351	72,453	72,424	73,904	72,245	76,830	76,670	75,765	74,235	76,972	3.7%

(1) The statistics in this table include "Civil Matters Filed with Clerk", which are reported separately in the quarterly report. "Civil Matters Filed with Clerk" consist of those civil cases that require no or little judicial resources. This category includes the following cause codes of civil actions: Abstract of Judgment, Foreign Judgment, Tax Warrant, and Transcript of Judgment.

(2) Juvenile truancy filing became mandated on 10/1/1995.

Table 3. Year-end Pending Caseload

Category	Year-end Pending Caseload ⁽²⁾										2006-2007 ⁽³⁾
	1998	1999	2000	2001	2002	2003	2004	2005	2006	2007	Change (%)
Criminal	2,334	2,420	2,763	3,451	2,326	2,884	3,377	3,227	3,828	4,154	8.5%
Civil (excluding RALJ and Matters Filed with Clerk)	9,725	10,161	11,462	11,599	11,598	11,902	11,838	9,625	8,941	8,719	-2.5%
Civil Matters Filed with Clerk ⁽¹⁾	10	25	38	9	0	10	2	0	0	0	N/A
Domestic	4,584	4,522	4,435	4,637	3,929	3,690	3,695	3,698	3,641	3,773	3.6%
Probate	291	407	755	770	784	859	821	915	1,082	994	-8.1%
Guardianship	385	408	400	364	379	519	525	552	617	512	-17.0%
Adoption	371	356	357	338	357	331	374	394	365	288	-21.1%
Paternity	1,285	1,176	1,059	1,110	816	901	624	689	468	558	19.2%
Mental Illness	253	84	112	195	101	158	123	92	136	209	53.7%
Juvenile At-Risk Youth and Child-in-Need-of-Service	113	102	238	463	206	247	98	83	69	100	44.9%
Juvenile Dependency/Termination	740	731	764	747	1,094	550	330	457	557	620	11.3%
Juvenile Truancy	1,118	1,691	2,174	2,032	1,872	1,518	938	1,224	1,339	1,327	-0.9%
Juvenile Offender	1,018	1,114	943	962	922	1,071	1,045	1,116	889	1,059	19.1%
Criminal RALJ	602	596	507	338	276	246	204	230	207	195	-5.8%
Civil RALJ	139	103	137	81	48	81	56	71	49	58	18.4%
Total	22,968	23,896	26,144	27,096	24,708	24,967	24,050	22,373	22,188	22,566	1.7%

(1) The statistics in this table include "Civil Matters Filed with Clerk", which are reported separately in the quarterly report. "Civil Matters Filed with Clerk" consist of those civil cases that require no or little judicial resources. This category includes the following cause codes of civil actions: Abstract of Judgment, Foreign Judgment, Tax Warrant, and Transcript of Judgment.

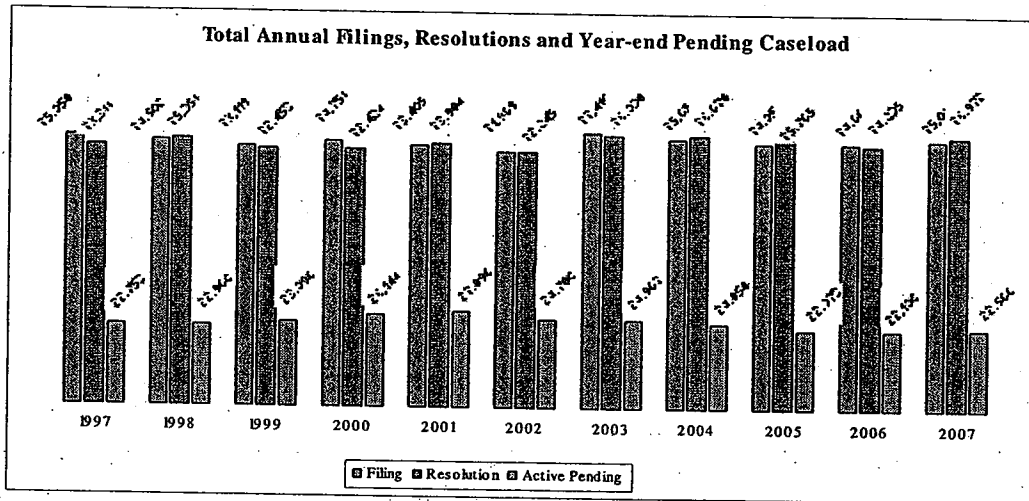
(2) Pending caseload does not include cases on suspense status.

(3) The percentage should be interpreted along with the number of cases. For those categories with small numbers, a large percentage does not necessarily indicate potential problem.

Table 4: Statistics by Location (SEA vs. KNT)

Category	2007 Filings			2007 Resolutions			2007 Year-end Pending Caseload		
	KNT (%)	SEA (%)	Total (n)	KNT (%)	SEA (%)	Total (n)	KNT (%)	SEA (%)	Total (n)
Criminal	34%	66%	10767	35%	65%	11051	37%	63%	4154
Civil (excluding RALJ and Matters Filed with Clerk)	41%	59%	26020	41%	59%	26792	27%	73%	8719
Civil Matters Filed with Clerk ⁽¹⁾	37%	63%	12784	37%	63%	12793	NA	NA	0
Domestic	39%	61%	7720	39%	61%	7705	39%	61%	3773
Probate	22%	78%	5363	23%	77%	5438	15%	85%	994
Guardianship	41%	59%	885	40%	60%	971	29%	71%	512
Adoption	24%	76%	717	24%	76%	800	45%	55%	288
Paternity	48%	52%	1421	47%	53%	1344	44%	56%	558
Mental Illness	0%	100%	2397	0%	100%	2328	0%	100%	209
Juvenile At-Risk Youth and Child-in-Need-of-Service	52%	48%	411	54%	46%	404	22%	78%	100
Juvenile Dependency/Termination	45%	55%	971	47%	53%	1035	23%	77%	619
Juvenile Truancy ⁽²⁾	64%	36%	2111	57%	43%	2293	55%	45%	127
Juvenile Offender	0%	100%	3954	0%	100%	3699	0%	100%	1056
Criminal RALJ	0%	100%	225	0%	100%	238	0%	100%	195
Civil RALJ	0%	100%	95	0%	100%	89	0%	100%	58
Total	35%	65%	75841	35%	65%	12793	31%	69%	22545

(1) The statistics in this table include "Civil Matters Filed with Clerk", which are reported separately in the quarterly report. "Civil Matters Filed with Clerk" consists of those civil cases that require little or no judicial resources. This category includes the following cause codes of civil actions: Abstract of Judgment, Foreign Judgment, Tax Warrant, and Transcript of Judgment.



Appendix Definition

Active Status

A case is active if it is not on suspense status (see Suspense Status).

Adoption Cases

This reporting category includes the following "cause-of-action" codes within SCOMIS case type 5:

- Relinquishment (REL)
- Termination of Parent/Child Relationship (TER)
- Adoption (ADP)
- Miscellaneous (MSC)
- Name Change - Confidential (CHN)
- Initial Pre-Placement Report Filed with Clerk (PPR)

Annual Filings

Total number of new case filings during the calendar year (January 1 to December 31).

ANTRIAL

An "Assigned - No Trial" is a trial that has pre-trial motion time (PTM) and possibly voir dire time (VDT), but the trial was ended by plea, settlement or other dispositions before the opening statement or the impanel of a jury.

Case

A case is defined as a filing with an assigned case number (or a case number plus a defendant connection code in pre-1990 criminal filings).

Civil Cases (excl. RALJ and Matters Filed with Clerk)

Civil cases, excluding appeals from courts of limited jurisdiction and "Matters Filed with Clerk". Civil cases include small claims as identified by the "Small Claim Track". This reporting category includes the following "cause-of-action" codes within SCOMIS case type 2:

- Administrative Law Review (ALR)
- Change of Name - Non-Confidential (CHN)
- Collection (COL)
- Commercial (COM)
- Condemnation (CON)
- Appeals of Department of Licensing Revocation (DOC)
- Domestic Violence Protection (DVP)
- Emancipation of Minor (EOM)
- Foreclosure (FOR)
- Civil Harassment (HAR)
- Injunction (INJ)
- Other Malpractice (MAL)
- Medical Malpractice (MED)
- Meretricious Relationship (MER)
- Malicious Harassment (MHA)
- Miscellaneous (MSC)
- Minor Settlement (MST) - as of 10/1/96, under Guardianship
- Petition of Civil Commitment- Sexual Predator (PCC)
- Property Fairness (PFA)
- Personal Injury (PIN)
- Property Damage (PRP)
- Quiet Title (QTI)
- Small Claims (LCA/LCI on "Small Claim Track")
- Seizure of Property from the Commission of a Crime (SPC)
- Seizure of Property Resulting from a Crime (SPR)
- Tort Motor Vehicle (TMV)
- Tort Other (TTO)
- Unlawful Detainer (UND)
- Wrongful Death (WDE)
- Writ of Habeas Corpus (WHC)
- Miscellaneous Writ (WMW)
- Writ of Mandamus (WRM)

Writ of Restitution (WRR)

Writ of Review (WRV)

Civil Matters Filed with Clerk

Filings with clerk (case numbers assigned), but requiring little or no judicial action. This reporting category includes the following "cause-of-action" codes within SCOMIS case type 2:

- Abstract of Judgment (ABJ)
- Foreign Judgment (FJU)
- Tax Warrant (TAX)
- Transcripts of Judgment (TRJ)

Civil RALJ Cases

Civil appeals from courts of limited jurisdiction (excluding small claims as identified by the "Small Claim Track"). Civil RALJ includes the following "cause-of-action" reporting categories:

- Lower Court Appeal - Civil and "Not a Small Claim"
- Lower Court Appeal - Infraction and "Not a Small Claim"

Note: The Civil RALJ cases are determined based on both SCOMIS "cause-of-action" code (LCA and LCI) within SCOMIS case type 2 and the "Small Claim Track".

Completion

A case is completed when dispositive document is filed with the court following resolution.

Criminal Cases (excl. RALJ)

Adult criminal cases, excluding appeals from courts of limited jurisdiction. This reporting category includes the following crime categories within SCOMIS case type 1:

- Homicide
- Sex Crime
- Robbery
- Assault
- Theft/Burglary
- Motor Vehicle Theft
- Controlled Substance
- Other Felony
- Others (Misdemeanor, Non-charge Case)

Criminal RALJ Cases

Criminal appeals from courts of limited jurisdiction. This reporting category includes all SCOMIS case type 1 cases that have an appeal from lower court field of "Yes".

Domestic Cases

This reporting category includes the following "cause-of-action" codes within SCOMIS case type 3:

- Child Custody (CUS)
- Dissolution with Children (DIC)
- Dissolution without Children (DIN)
- Foreign Judgment (FJU)
- Annulment/Invalidity (INV)
- Modification (with a new case number) (MOD)
- Miscellaneous (MSC)
- Mandatory Wage Assignment (MWA)
- Out-of-State Child Custody (OSC)
- Reciprocal, Respondent-in-County (RIC)
- Reciprocal, Respondent-out-of-County (ROC)
- Legal Separation (SEP)

Guardianship Cases

This reporting category includes the following "cause-of-action" codes within SCOMIS case type 4:

- Guardianship/Estate (G/E)
- Guardianship (GND)
- Limited Guardianship (LGD)
- Minor Settlement (MST)

Jury Trial

A hearing is reported as a jury trial if the jury is impaneled.

Juvenile At-risk Youth/Child-in-Need of Service Cases

Juvenile dependency cases, excluding truancy cases. This reporting category includes following "cause-of-action" codes within SCOMIS case type 7:

- Alternative Residential Placement (ARP)
- At-Risk Youth (ARY)
- Child in Need of Service (CNS)

Juvenile Dependency Cases

Juvenile dependency cases, excluding truancy cases. This reporting category includes following "cause-of-action" codes within SCOMIS case type 7:

- Dependency (DEP)
- Termination (TER)

Juvenile Offender Cases

This reporting category includes the following crime categories in SCOMIS case type 8:

- Homicide
- Sex Crime
- Robbery
- Assault
- Theft/Burglary
- Motor Vehicle Theft
- Controlled Substance
- Other Felony
- Others (Misdemeanor, Non-charge Case)

Juvenile Truancy Cases

Mandatory truancy filings started on 10/01/1995. This reporting category includes the following "cause-of-action" code within SCOMIS case type 7:

- Truancy (TRU)

Mental Illness Cases

This reporting category includes all "cause-of-action" codes within SCOMIS case type 6:

- Alcoholic Treatment (ALT)
- Mental Illness - Adult (MI)
- Mental Illness - Juvenile (MIJ)

Non-Jury Trial

A hearing is reported as a non-jury trial if an opening statement is made, waived, or reserved.

Number of Trials

Occurrences of trials. If a case has multiple trials, all trials are reported. If multiple cases are tried together, it is reported as one trial where possible (see "Number of Cases Tried" for difference). The number of trials refer to number of jury and non-jury trials (including juvenile fact-findings).

Paternity Cases

This reporting category includes the following "cause-of-action" codes within SCOMIS case type 5:

- Modification (MOD)
- Paternity (PAT)
- Paternity/URES/UFSA (PUR)

Pending Case

A case is defined as pending if it is unresolved and active (not in suspense).

Post-disposition Modifications

Petitions to modify parenting plan and/or support after the resolution of the original cases, based on the modification tracks opened during the reporting period.

Probate Cases

This reporting category includes the following "cause-of-action" codes within SCOMIS case type 4:

- Absentee (ABS)
- Disclaimer (DSC)
- Estate (EST)
- Foreign Will (FNW)
- Miscellaneous (MSC)
- Non-Probate Notice to Creditors (NNC)
- Will Only (WLL)

Resolution

A case is resolved if all issues in the complaint are fully adjudicated.

Suspended Case

A case is placed in suspense status from active status during the reporting period.

Suspense Status

A case is on suspense status if it is on warrant, appeal, stay, mediation, arbitration ("Deferred Prosecution" is not a suspense status, but is treated as a resolution).

Trial

A hearing set before a judge or jury in which all the issues in the case are meant to be resolved. A trial normally includes opening statements to the court or jury stating what evidence will show, introduction of witnesses and exhibits for direct and cross examination, final arguments to the court or jury in which counsel argue both the evidence and the law, and judgment by the court or jury stating what the facts of the case are and what law applies to the facts. In a jury case, it also includes the selection of the jury. A trial can be held for one or more cases. A single trial may be held to adjudicate more than one case (as defined above).