

KING COUNTY EQUITABLE DEVELOPMENT INITIATIVE

Implementation Plan Phase 2

Aaron Garcia, he/him, White Center CDA

Debbie Lacy, she/her, Eastside For All

Yordanos Teferi, she/her, Multicultural Community Coalition

DISPLACEMENT IS A COUNTYWIDE ISSUE

Opinion

The Seattle Times

We failed the Central District, but we must do right by Skyway

Feb. 17, 2020 at 12:01 pm



Skyway residents gather for the Skyway Outdoor Cinema in August 2018. (Dean Rutz / The Seattle Times)

By Girmay Zahilay

Special to The Times

Development near SeaTac light rail threatens to oust mobile home park

Posted on Dec 22, 2016 by Mike Simpson



The Firs homeowner Irene Cruz is concerned about eviction, as the property owner of the mobile home park makes plans for a hotel. (Photo by Mike Simpson)

Local News

The Seattle Times

The splitting of Seattle — and the Eastside, too — is accelerating

Sep. 16, 2023 at 6:33 am

DISPLACEMENT IS NOT JUST HOUSING SUPPLY

Cultural Anchors & Celebration Spaces



Small, Culturally Serving Businesses



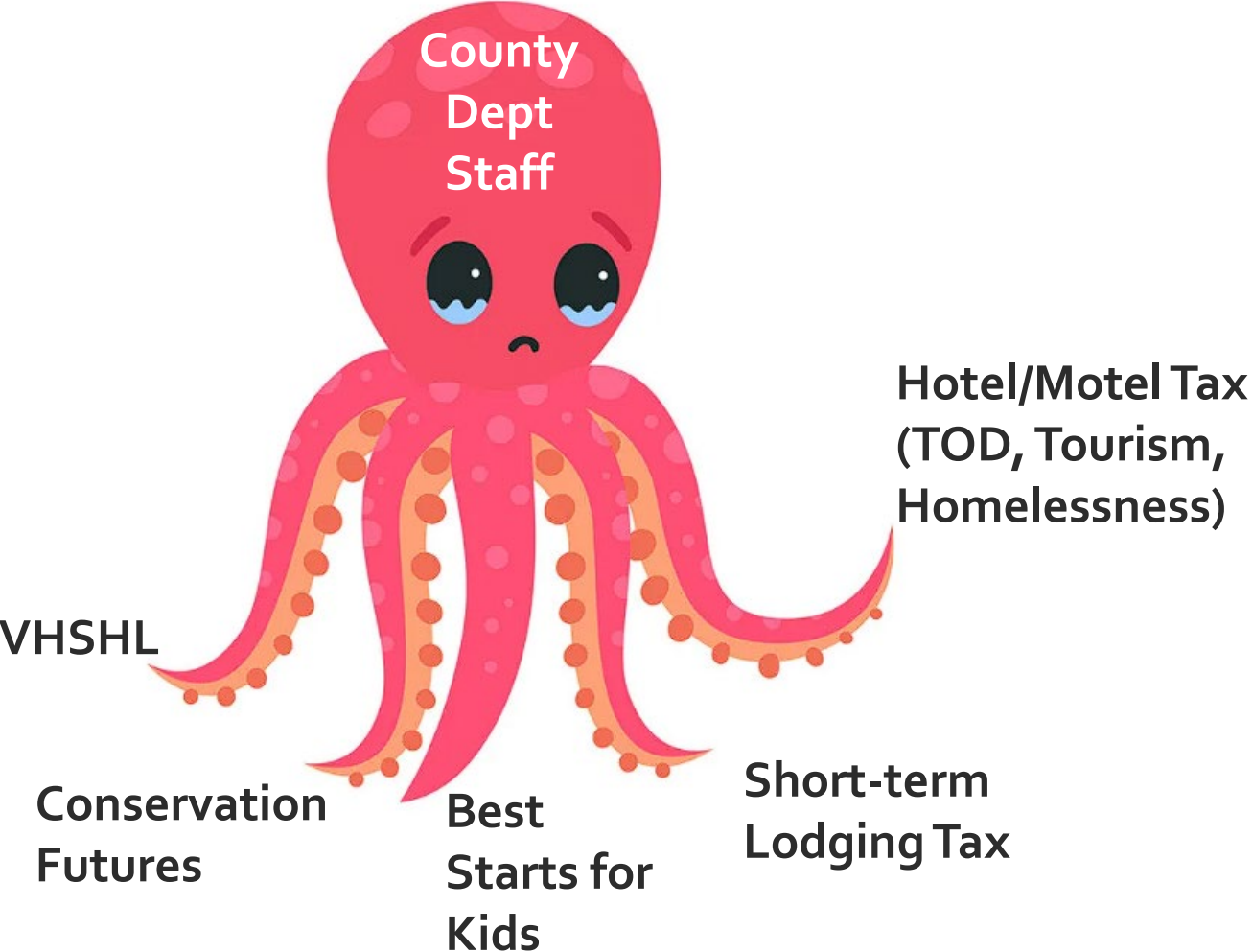
Farms & Ecological Spaces

With Real Investment, BIPOC Communities Can Slow Displacement & Address our Housing Crisis



WHITE CENTER HUB PROJECT

COMMUNITIES STRUGGLE TO NAVIGATE COUNTY PROGRAMMING & FUNDING



... the right tentacle doesn't always talk to the left.

PROGRESS OF KING COUNTY EDI

COO and King County Fund
Community Real Estate
Stewardship Learning Circle

Community Planning Workgroup
transmits Implementation Plan
Phase 1

Community Planning Workgroup
transmits Implementation Plan
Phase 2

March 2022

December 2023

2018-2021

January 2023

July 2024

Motion 16062 establishes the
Community Planning Workgroup

\$1 million in Short Term Lodging
Revenue Appropriated

EDI: LET A THOUSAND FLOWERS BLOOM

Thriving in Place

VISIONS FOR
Community Stewardship
Across King County

STORIES FEATURING

Congolose Integration Network

Friendly Hmong Farms

Na'ah Illahee Fund

The PNW BIPOC Farmland Trust

slepilēbex*



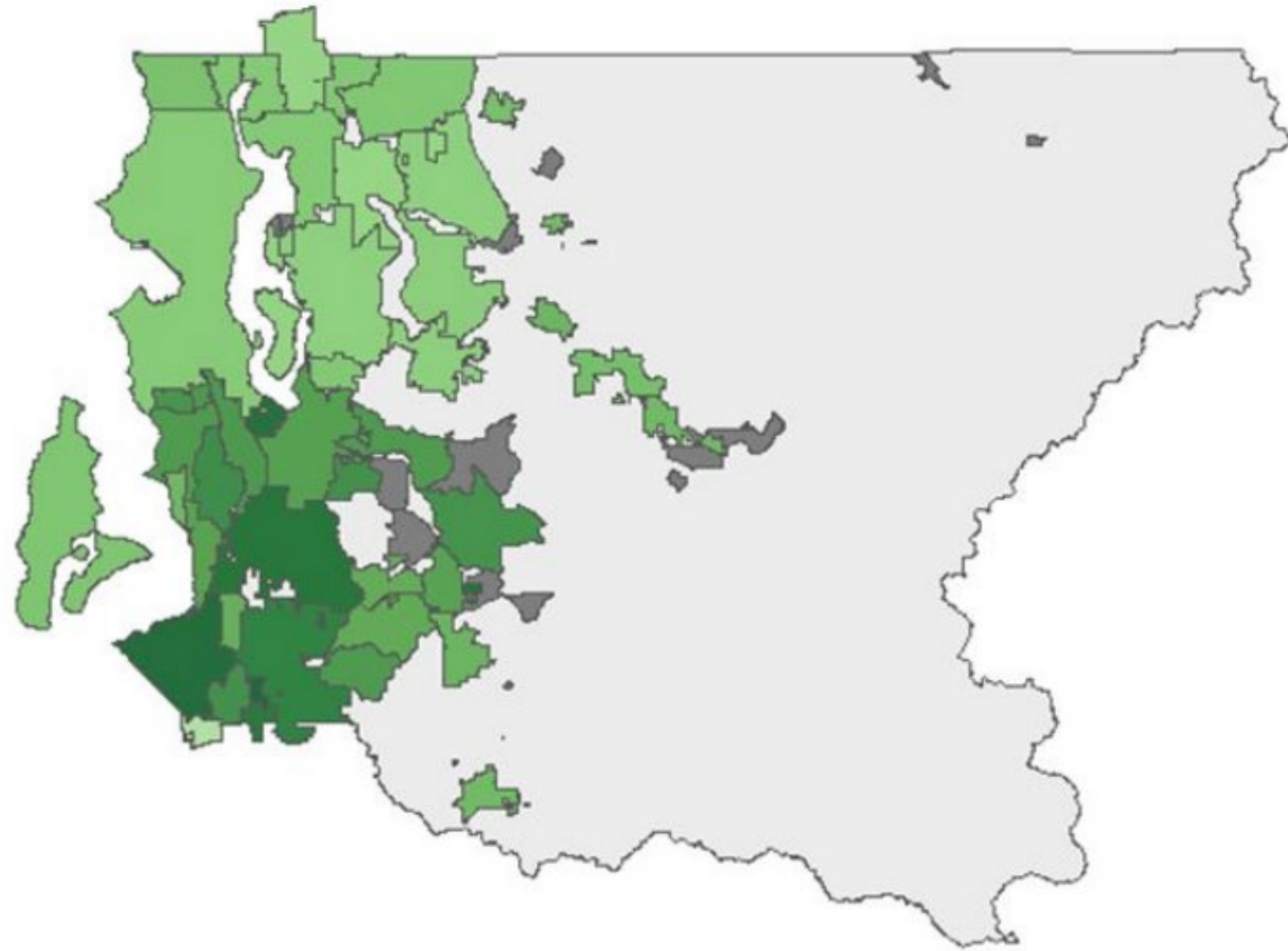
District	Potential Project
1	Lake City Collective
2	Skyway Coalition (Resource Center and Brooks Village Project)
3	PNW BIPOC Farmland Trust
4	Na'ah Illahee Fund - Native Neighborhoods
5	African Community Housing & Development, Congolese Integration Network, & Wakulima
6	Eastside for All
7	Federal Way, Kent, and Auburn-based community organizations facing displacement pressures
8	White Center CDA, Comunidad Latina Vashon, Khmer Community of King County
9	Renton and unincorporated-based communities facing displacement pressures

CPW PRIORITIES:

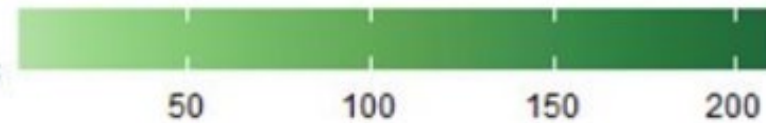
1. Make new investments in community-led equitable development projects
2. Collaborate across KC departments to promote equitable development as a county-wide goal
3. Build partnerships and leverage expertise, ideas and resources beyond KC government
4. Integrate learning, monitoring, and evaluation objectives and practices



Eviction Filings Per Capita 2015 - March 2023



Number of Eviction Filings per 1000 Renters



GEOGRAPHIC PRIORITIES

Geography should be a factor, but not the sole factor

- *1st preference*: Unincorporated King County
- *2nd preference*: Jurisdictions outside of Seattle where King County EDI has no investments
- *3rd preference*: Incorporated areas outside of Seattle
- *4th preference*: Seattle

IMPLEMENTATION HIGHLIGHTS

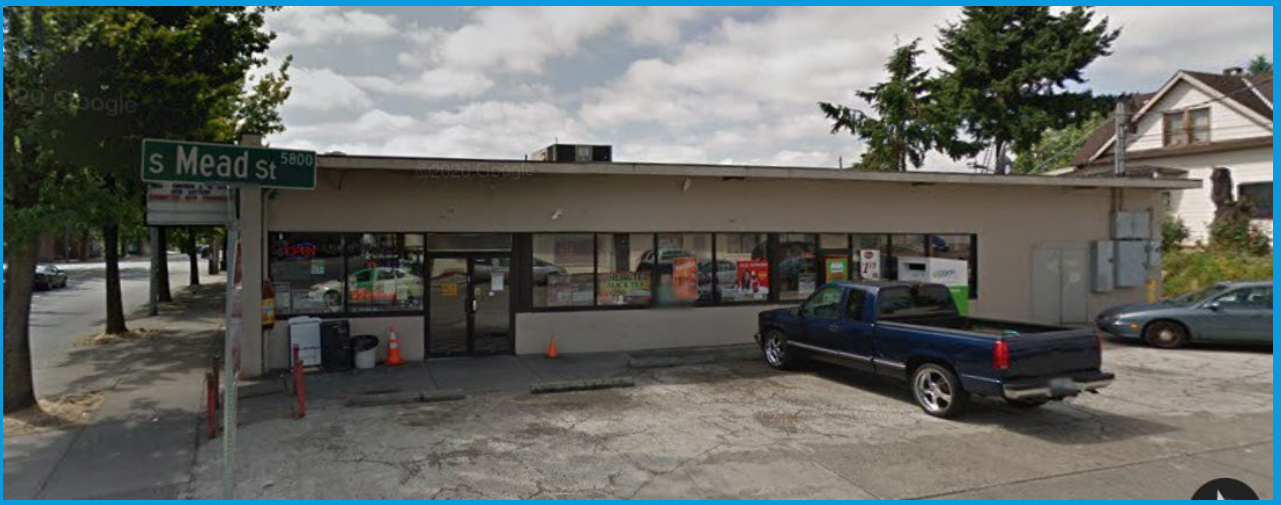
- \$1 million for affordable housing and capacity building grants
- Creation of a new, Interim Advisory Board
- Cross-department coordination on anti-displacement efforts

INTERDEPARTMENTAL COORDINATING COMMITTEE

Octopi are
smart!



...when the
left and right
tentacles work
together.



INTERIM ADVISORY BOARD



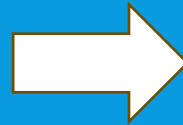
The CPW calls for the role of the Interim Advisory Board to include:

- Provide guidance to King County EDI staff on implementation
- Support inter-departmental coordination efforts
- Make recommendations to the County on policy related to EDI

ALLOCATION OF INITIAL \$1 MILLION

- CPW advises that:
 - all the \$1million should go to community-led projects
 - Staff should be supported through other DCCHS funds
- But Executive has shifted 25% to staffing costs

PRIORITIZE CAPITAL ACROSS DEPTS FOR COMMUNITY-LED PROJECTS



EXECUTIVE RESPONSE

“If the Council does not allocate additional revenue, **the Executive will sunset the King County EDI** soon after the final grant payments from the \$1 million in Short-term Lodging Tax, which is estimated to be approximately 18 months from the start of the King County EDI.”

“At the time of the writing of this report, the Executive has not identified a viable funding option that could sustain a King County EDI and achieve the significant level of change and resources the CPW envisions.”

“However, the only County funding available for the Initiative is the one-time appropriation in 2023 of \$1 million in Short-term Lodging Tax funds. Thus, due to the lack of an available and sustainable funding source, the Executive recognizes **the infeasibility of fulfilling the CPW’s recommended funding actions in the next one to three years.**”

GETTING CREATIVE WITH EXISTING REVENUE

- Existing DCHS fund sources from the Housing and Community Development (HCD) Fund budget:
 - Short-term Lodging Tax
 - Transit-Oriented Development (TOD) Funds
 - Interim Loan Program
- Existing fund sources outside of DCHS' budget:
 - Hotel/Motel Taxes for Tourism
 - State funding