

Donley, Kate

From: Lockmiller, Anne
Sent: Friday, August 15, 2008 11:43 AM
To: Constantine, Dow; Dunn, Reagan; Ferguson, Bob; Gossett, Larry; Hague, Jane; Lambert, Kathy; Patterson, Julia; Phillips, Larry; von Reichbauer, Pete; Buck, Jim; Cowan, Bob; Holtgeerts, Reed; Jennings, Theresa; Linde, Barbara; MacLean, Jackie; Miner, Barbara; Northcroft, George; Rahr, Susan; Taniguchi, Harold; Teeter, Dorothy; Warden, Stephanie; Bleifuhs, Steve; Blumen, Connie; Brown, Kathy; Brown, Kevin; Burke, Robert; Burns, Bob; Campbell, Darwin; Crawford, Curt; Desmond, Kevin; Donley, Kate; Dougherty, Linda; Eckel, Bill; Elardo, Pam; Elmer, Tami; Evans, Glenn; Fleming, David; Gammell, Norm; Holecek, Linda; Huff, Sherril; Isaacson, Mark; Jackson, Gerrie; Kiernan, Kevin; Krank, Ken; Leifer, Ben; Lockmiller, Anne; Markham, Cheryl; Mathews-Hellman, Marjory; Olson, Tom; Peterson, Linda; Richardson, Wayne; Riley, Judy; Stewart, Susan; Thompson, Bernie; Thompson, Bob; True, Christie; Zandberg, Mark
Cc: Lockmiller, Anne
Subject: SURPLUSSING NOTICE CORRECTION
Attachments: KIT'S CORNER PARCELS - CORRECTED SURPLUSSING INFO SHEET.doc; KIT'S CORNER PARCELS - VICINITY MAP.pdf; KIT'S CORNER PARCELS - MAP OF PARCEL 219160-0870.pdf

Dear Council Members, Department Directors, Division Directors and Their Appointees:

The attached are brief updates on a surplussing of Solid Waste's Kit's Corner Parcels, in which affordable housing has expressed an interest. Their review shouldn't take too much of your time.

Thank you, and have a lovely weekend.



KIT'S CORNER
ARCELS - CORRECT.



KIT'S CORNER
ARCELS - VICINIT..



KIT'S CORNER
ARCELS - MAP OF ..

AL

**ANNE LOCKMILLER
REAL PROPERTIES SURPLUSSING AGENT
KING COUNTY REAL ESTATE SERVICES
(206) 205-5638**

Property Name	Tax Numbers	Size	Jurisdiction	Zoning	Owner	Appraised Value
KIT'S CORNER PARCELS	#219160-0870 #219160-2090 #219160-2050 #219160-2135 #219160-2150	TOTAL APPROX ACRES: 8.46	King County	R-4	SOLID WASTE DIVISION	None Yet

**CORRECTED NOTICE TO SURPLUS
FOR KIT'S CORNER PARCELS**

On Monday, July 28, 2008, Real Estate Services Section distributed a notice to surplus five unimproved parcels, custodiansed by Solid Waste. We refer to this surplusung as the Kit's Corner Parcels. These R-4 parcels are proximate to the city of Federal Way at the southeast quadrant of Interstate 5 and Highway 18. They are north and northeast of the Puyallup Landfill.

The purpose of this surplusung is that County's Department of Community and Human Services has expressed an interest in possible development for affordable housing.

We wish to redistribute a map that will properly display the layout of one particular parcel, APN #219160-0870. Parcel -0870 is 7.97 acres and has stream, wetland and associated buffers.

The original distribution map incorrectly indicated that this parcel involves only one single lot. In actuality, APN #219160-0870 is made of up many different small lots, all of which are assigned the same parcel number in the Assessor's Database.

The attached map, provided by Department of Development and Environmental Services, is a much clearer representation, highlighting in yellow parcel #219160-0870.

Should you have any further questions, please contact Anne Lockmiller, Real Properties Surplussing Agent, *as August 25, 2008 remains the due date* for all notices of interest or concern.

PLEASE SEE ATTACHED VICINITY MAP AND NEW VIEW OF APN #219160-0870 PARCELS.

Thank you!

KIT'S CORNER PARCELS - VICINITY MAP

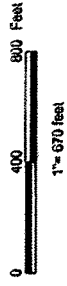
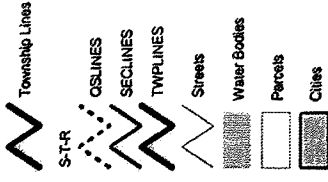


COMMENTS: Assessor Parcel Numbers 219160-0870, 219160-2090, 219160-2050, 219160-2135, and 219160-2150

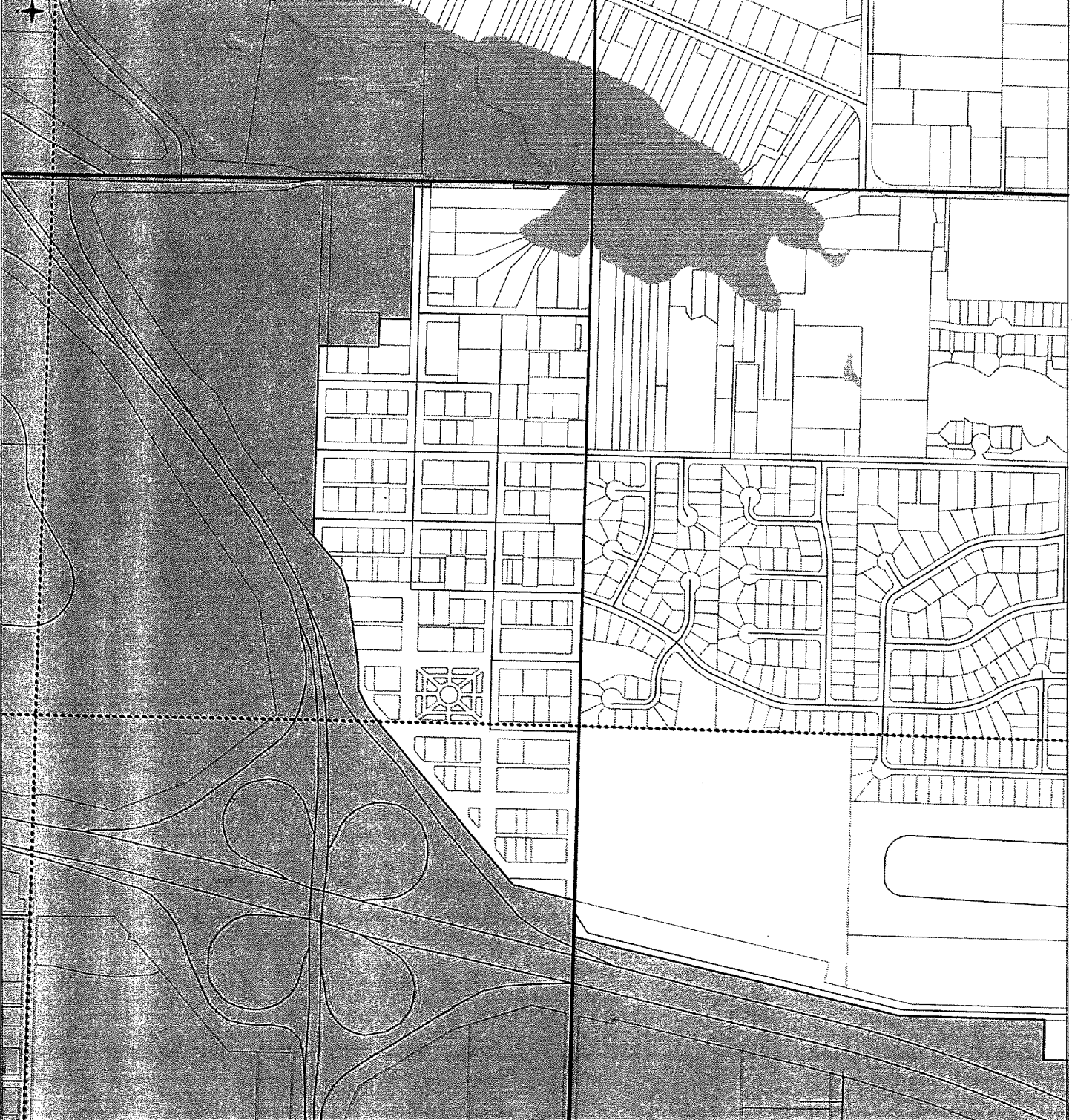
The information included on this map has been compiled by King County staff from a variety of sources and is subject to change without notice. King County makes no representations or warranties, express or implied, as to accuracy, completeness, timeliness, or rights to the use of such information. This document is not intended for use as a survey product. King County shall not be liable for any general, special, indirect, incidental, or consequential damages including, but not limited to, lost revenues or lost profits resulting from the use or misuse of the information contained on this map. Any sale of this map or information on this map is prohibited except by written permission of King County.



Kit's Corner 2191600870



The information included on this map has been compiled by King County staff from a variety of sources and is subject to change without notice. King County makes no warranty, express or implied, as to the accuracy, completeness, timeliness, or utility of the information. King County shall not be liable for any general, special, indirect, incidental, or consequential damages including, but not limited to, lost revenues or lost profits, arising out of the use of the information contained on this map. Any use of this map or information on this map is prohibited except by written permission of King County.



Donley, Kate

Subject: FW: SURPLUSSING NOTICE - KIT'S CORNER PARCELS

Attachments: KIT'S CORNER PARCELS - SURPLUSSING INFO SHEET.doc; KIT'S CORNER PARCELS - SURPLUSSING INFO SHEET.pdf; KIT'S CORNER PARCELS - PARCELS VIEW.pdf; KIT'S CORNER PARCELS - VICINITY MAP.pdf; KIT'S CORNER PARCELS - SURPLUSSING COVER LETTER.pdf; KIT'S CORNER PARCELS - NOTICE OF INTEREST.doc

From: Lockmiller, Anne
Sent: Tuesday, July 29, 2008 3:35 PM
To: Constantine, Dow; Dunn, Reagan; Ferguson, Bob; Gossett, Larry; Hague, Jane; Lambert, Kathy; Patterson, Julia; Phillips, Larry; von Reichbauer, Pete; Buck, Jim; Cowan, Bob; Holtgeerts, Reed; Jennings, Theresa; Linde, Barbara; MacLean, Jackie; Miner, Barbara; Northcroft, George; Rahr, Susan; Taniguchi, Harold; Teeter, Dorothy; Warden, Stephanie; Bleifuhs, Steve; Blumen, Connie; Brown, Kathy; Brown, Kevin; Burke, Robert; Burns, Bob; Campbell, Darwin; Crawford, Curt; Desmond, Kevin; Donley, Kate; Dougherty, Linda; Eckel, Bill; Elardo, Pam; Elmer, Tami; Evans, Glenn; Fleming, David; Gammell, Norm; Holecek, Linda; Huff, Sherril; Isaacson, Mark; Jackson, Gerrie; Kiernan, Kevin; Krank, Ken; Leifer, Ben; Lockmiller, Anne; Markham, Cheryl; Mathews-Hellman, Marjory; Olson, Tom; Peterson, Linda; Richardson, Wayne; Riley, Judy; Stewart, Susan; Thompson, Bernie; Thompson, Bob; True, Christie; Zandberg, Mark
Subject: SURPLUSSING NOTICE - KIT'S CORNER PARCELS

Dear Council Members, Department and Division Directors, and their Appointees...

Good day to you all.

Attached is information regarding the surplussing by Solid Waste Division of five residential parcels within Unincorporated King County, proximate to the city of Federal Way.

Though they are being surplussed as a group and relatively close together, the individual subject sites are interspersed among other unrelated parcels. And it is difficult to ascertain from the included GIS depictions which are the actual five sites. So within the indicated attachment below, please humor my hand-drawn bolded boundaries around the surplussed parcels which should offer a clearer idea of their layout .

Please take time to review.

Should you have comments, concerns, or interest in any of these parcels, please state such on the attached Notice of Interest Form and return to me no later than Monday, August 25th.

Thank you.

From Parcel Viewer



KIT'S CORNER
ARCELS - SURPLUS.

Hand drawn bolded lines clarifying actual sites surplussed



KIT'S CORNER
ARCELS - SURPLUS.



KIT'S CORNER
ARCELS - PARCELS.



KIT'S CORNER
ARCELS - VICINIT..



**KIT'S CORNER
ARCELS - SURPLUS.**



**KIT'S CORNER
ARCELS - NOTICE ..**

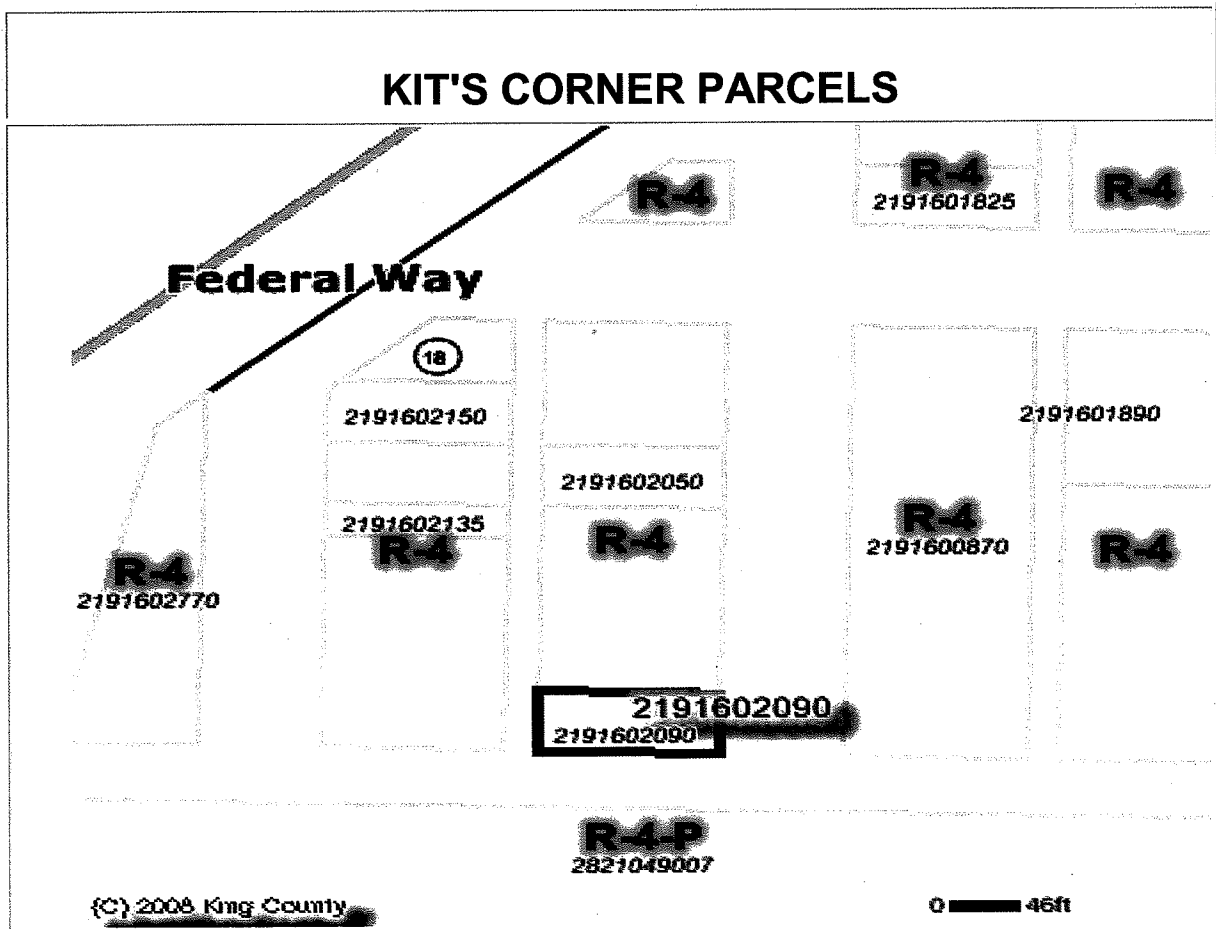
AL

**ANNE LOCKMILLER
REAL PROPERTIES SURPLUSSING AGENT
KING COUNTY REAL ESTATE SERVICES
(206) 205-5638**

Property Name	Tax Numbers	Size	Jurisdiction	Zoning	Owner	Appraised Value
KIT'S CORNER PARCELS	#219160-0870 #219160-2090 #219160-2050 #219160-2135 #219160-2150	TOTAL APPROX ACRES: 8.60	King County	R-4	SOLID WASTE DIVISION	None Yet

King County's Solid Waste Division wishes to surplus five unimproved parcels in Unincorporated King County. These R-4 parcels are proximate to the city of Federal Way at the southeast quadrant of Interstate 5 and Highway 18. They are north and northeast of the Puyallup Landfill. Parcel -0870 is almost 8 acres and has stream, wetland and associated buffers. The other parcels are of relatively small size.

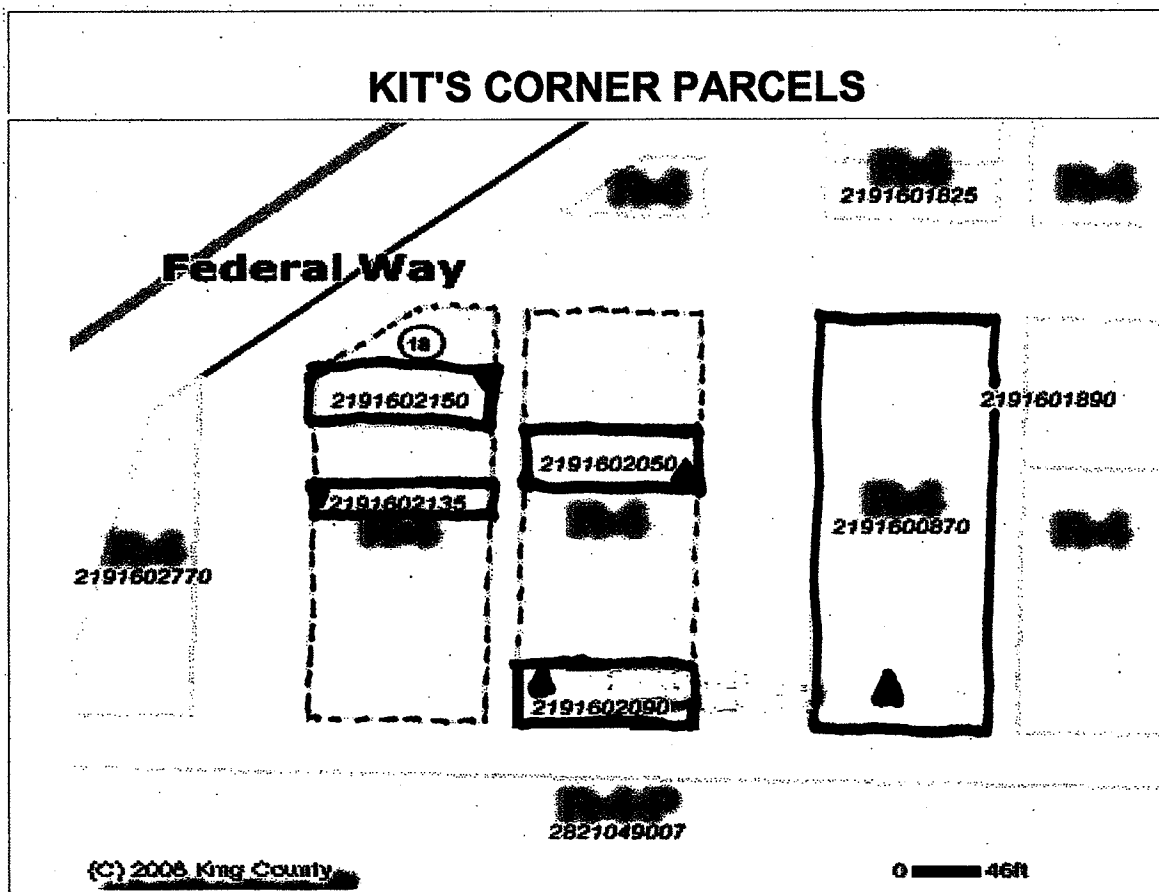
The County's Department of Community and Health Services has expressed an interest in possible development for affordable housing.



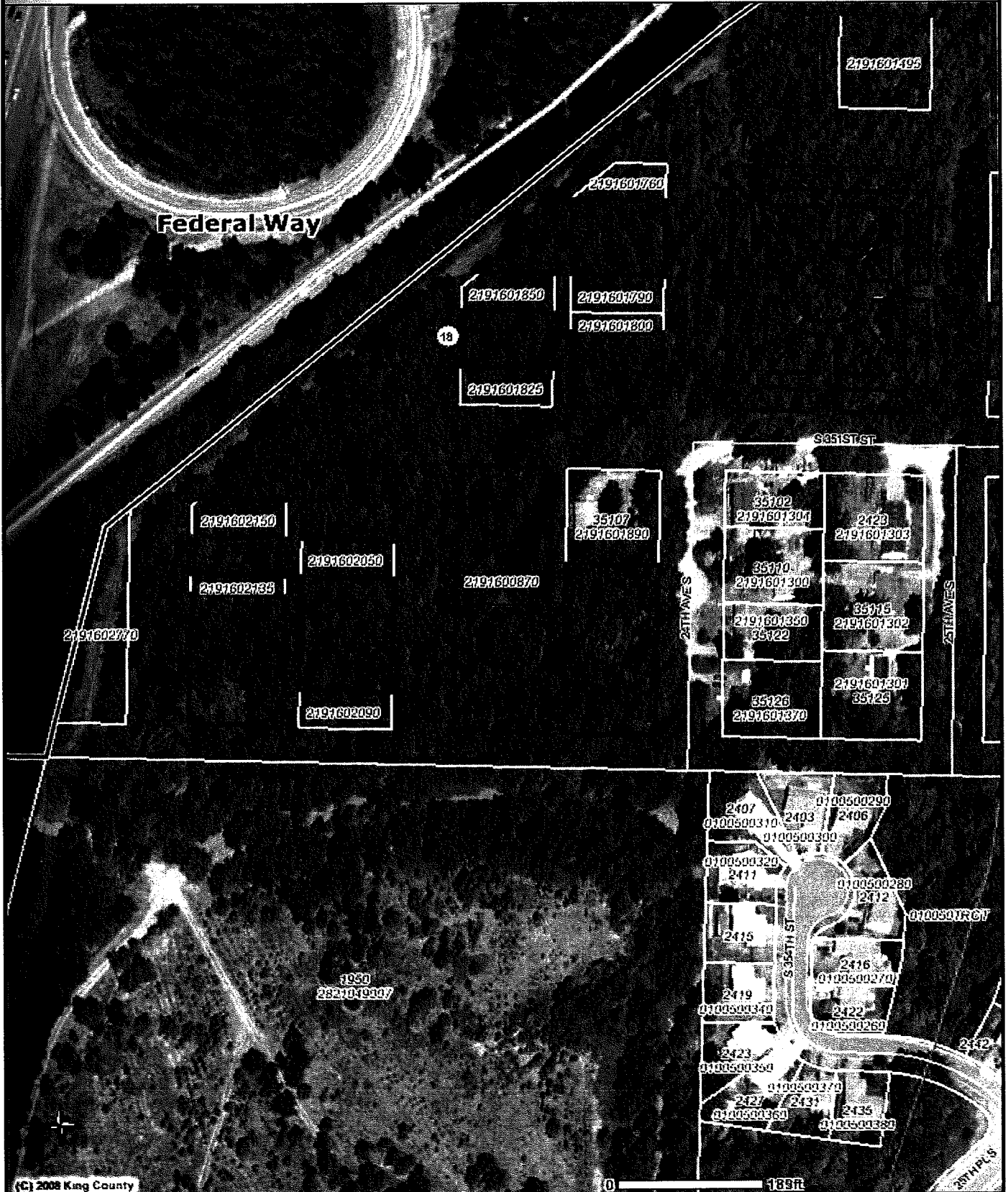
Property Name	Tax Numbers	Size	Jurisdiction	Zoning	Owner	Appraised Value
KIT'S CORNER PARCELS	#219160-0870 #219160-2090 #219160-2050 #219160-2135 #219160-2150	TOTAL APPROX ACRES: 8.60	King County	R-4	SOLID WASTE DIVISION	None Yet

King County's Solid Waste Division wishes to surplus five unimproved parcels in Unincorporated King County. These R-4 parcels are proximate to the city of Federal Way at the southeast quadrant of Interstate 5 and Highway 18. They are north and northeast of the Puyallup Landfill. Parcel -0870 is almost 8 acres and has stream, wetland and associated buffers. The other parcels are of relatively small size.

The County's Department of Community and Health Services has expressed an interest in possible development for affordable housing.



KIT'S CORNER PARCELS - PARCELS VIEW



(C) 2008 King County

COMMENTS: Assessor Parcel Numbers 219160-0870, 219160-2090, 219160-2050, 219160-2135, and 219160-2150

The information included on this map has been compiled by King County staff from a variety of sources and is subject to change without notice. King County makes no representations or warranties, express or implied, as to accuracy, completeness, timeliness, or rights to the use of such information. This document is not intended for use as a survey product. King County shall not be liable for any general, special, indirect, incidental, or consequential damages including, but not limited to, lost revenues or lost profits resulting from the use or misuse of the information contained on this map. Any sale of this map or information on this map is prohibited except by written permission of King County.

Date: 7/25/2008

Source: King County iMAP - Property Information (<http://www.metrokc.gov/GIS/IMAP>)



KIT'S CORNER PARCELS - VICINITY MAP



© 2008 King County

COMMENTS: Assessor Parcel Numbers 219160-0870, 219160-2090, 219160-2050, 219160-2135, and 219160-2150

The information included on this map has been compiled by King County staff from a variety of sources and is subject to change without notice. King County makes no representations or warranties, express or implied, as to accuracy, completeness, timeliness, or rights to the use of such information. This document is not intended for use as a survey product. King County shall not be liable for any general, special, indirect, incidental, or consequential damages including, but not limited to, lost revenues or lost profits resulting from the use or misuse of the information contained on this map. Any sale of this map or information on this map is prohibited except by written permission of King County.

Date: 7/25/2008

Source: King County iMAP - Property Information (<http://www.metrokc.gov/GIS/iMAP>)

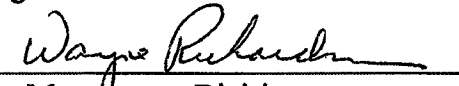




King County

Monday, July 28, 2008

TO: King County Councilmembers
King County Department Directors
King County Division Directors/Managers

FM: Wayne Richardson, Manager 
Real Estate Services Section, Facilities Management Division

RE: **Surplus Property Notice:** **KENT MERIDIAN NORTH**
Responses Due by Monday, August 25th, 2008

King County's Solid Waste Division wishes to surplus five unimproved parcels in Unincorporated King County. These R-4 parcels are proximate to the city of Federal Way at the southeast quadrant of Interstate 5 and Highway 18. They are north and northeast of the Puyallup Landfill. Parcel -0870 is almost 8 acres and has stream, wetland and associated buffers. The other parcels are of relatively small size.

The County's Department of Community and Health Services has expressed an interest in possible development for affordable housing.

Pursuant to King County Code 4.56.100, prior to the transfer, sale or trade of surplus property, the Facilities Management Division must first determine whether any other County department has a need for the property for government services. Priority is given to uses related to the provision of essential government services. Essential government services is defined as services for public health, public safety, or services related to transportation, water quality, surface water or other utilities.

However, it has been determined that these parcels do qualify for affordable housing. Absent a need by other custodians, Department of Community and Housing Services has requested they be declared surplus, as Solid Waste has determined no further need to their division.

Please circulate this notice within your department or division to determine if the property is needed for government services or if there are any comments or concerns regarding the surplussing of this property. If you have any questions, please call Anne Lockmiller, Real Properties Surplussing Agent, Real Estate Services Section, at 206.205.5638.

Please return responses of interest to Real Estate Services by Monday, August 25th, 2008.

NOTICE OF INTEREST

NECESSARY ONLY IF YOUR DEPARTMENT / DIVISION HAS INTEREST OR COMMENT !!

DATE: _____

TO: Wayne Richardson, Manager
Real Estate Services Section, Facilities Management Division
Mail Stop – ADM-ES-0500

RE: SURPLUS PROPERTY NOTICE – KIT'S CORNER PARCELS

THIS DEPARTMENT/ DIVISION HAS THE FOLLOWING INTEREST / COMMENTS /
CONCERNS:

INTEREST / INTENDED USE: _____

COMMENTS / CONCERNS: _____

DEPARTMENT / DIVISION: _____

BY _____

TITLE _____

DATE _____