



May 17, 2024

King County Search & Rescue Association (KCSARA) was granted \$100,000 from King County to conduct research of possible locations for the KCSARA headquarters.

To complete this scope of work, KCSARA hired a third party consultant, Westby Associates, Inc., to facilitate this research. A committee was then developed to participate and provide critical feedback about what to consider in choosing a site. The committee represented leaders from five search and rescue teams, who would be using the headquarters:

KCSARA Leadership	Organization	Role
Jennifer Brenes	KCSARA	President/HQ Steering Committee
Nathan Lorance	KCSARA	Vice President
Michael Peters	KCSARA/ESAR	HQ Steering Committee
Drew Fletcher	KCSARA/SMR	HQ Steering Committee
Glenn Wallace	KCSARA/4x4	HQ Steering Committee
Joanne Hume	KCSARA	Development Director
Nora Hightower	KCSARA	HQ Development Director
Jeff Fischer	KCSARA	Headquarters Operations Director
SAR Unit Representatives		
Doug McCall	Seattle Mountain Rescue	Chairperson
Doug Caley	Seattle Mountain Rescue	Unit Representative
Valon Miller	Explorer SAR	Unit President
KCSARA Advisory Board		
Michael Woodsum	Advisory Board	
KCSARA Partners		
Chief Jeff Flohr	King County Sheriff's Office	Special Operations Division
Captain Koby Hamill	King County Sheriff's Office	Special Operations Division
Sgt. Jason Stanley	King County Sheriff's Office	
Alysha Kaplan	King County Office of Emergency Management	Deputy Director
Nicole Johnson	King County Office of Emergency Management	Senior EM Program Manager - Risk Reduction & Operations
Michael Padilla Ocampo	King County Executive's Office	External Relations

KCSARA Partners	Organization	Role
Chief Ben Lane	Eastside Fire & Rescue	Fire Chief
Deputy Will Aho	Eastside Fire & Rescue	Deputy Chief of Operations
Amy Brockhaus	Mountains to Sound Greenway	Deputy Director
Doug McClelland	Mountains to Sound Greenway	Immediate Past President/Ex-Officio

Key Staff

Chris Parker	Board & Vellum Architects	Senior Associate, Architect
Yi-Chun	Board & Vellum Architects	Director, Integrated Practices
Mike Westby	Westby Associates	President & CEO
Beth Ernst	Westby Associates	Associate

The committee created a list of the most important aspects to consider in choosing an appropriate location for the site.

The attached addendum summarizes the committee’s findings through a weighted analysis representing the components considered and their ranking:

- Addendum 1 – Weighted analysis of eight sites
- Addendum 2 – Estimated cost of buildout
- Addendum 3 – Map of site locations
- Addendum 4 – Master Plan Program Document

Conclusions

- The analysis was valuable in understanding the organizational needs related to location.
- Five of the eight properties were considered to be viable options with one clear favorite.
- Other viable options will stay “on the table” until property acquisition is finalized.

Next Steps

1. The weighted analysis identified five viable sites.
2. We are presently in negotiations for purchase or long-term lease of option 1.
3. Concurrently, we are conducting our due diligence on the other four options in the event our negotiations for Option 1 are not optimal.
4. Based on the outcomes of steps 1-3, we will look to pursue the best available site.
5. Based on site preference, we will conduct appropriate due diligence to execute sale or long-term lease.

**KCSARA Weighted Analysis of Property Options
Addendum 1**

COMPONENTS	RANK	Site #1	Site #2	Site #3	Site #4	Site #5	Site #6	Site #7	Site #8	
LOCATION SPECIFIC										
Out of Emergency Zone	10	9.33	9.50	9.16	9.5	8.50	9.67	7.83	3.67	
Proximity to I-90	10	9.83	9.50	9.5	9.33	9.67	10.00	4.17	6.33	
Proximity to Mission Footprint	10	9.17	8.66	8.33	8.5	9.17	9.33	4.00	7.33	
Viability of Infrastructure	8	7.17	7.00	7.5	7.16	7.17	5.83	4.67	4.67	
Proximity to Volunteers	7	5.67	4.33	4.33	3.66	5.67	5.50	2.33	5.00	
Primary Snow Route	4	4.00	3.00	3.16	3	2.83	3.67	2.00	2.83	
Appropriate Setting	2	2.00	1.50	1.5	1.66	2.00	1.83	1.50	1.33	
SUB-TOTAL	51	47.17	43.49	43.48	42.81	45.00	45.83	26.50	31.17	
PARCEL SPECIFIC										
Access to Utilities	10	8.17	8.33	9.33	8.3	7.50	5.83	6.33	5.50	
Minimum 5 Acres	10	9.33	9.50	9.66	9.66	9.17	5.83	7.83	5.67	
Willing Seller / Fair Price	10	7.50	7.00	8.33	7.83	5.67	5.50	5.83	5.50	
Communications	9	8.17	7.67	8.16	8	7.83	7.50	6.83	4.33	
Co-Location	8	7.50	7.00	6.5	5.66	6.83	4.50	4.67	3.50	
Growth Potential	6	5.17	5.00	4.5	3.83	4.83	2.67	4.00	2.33	
Multiple Ingress/Egress	6	4.67	5.50	4.5	3.66	2.33	3.50	2.67	2.33	
Helicopter Landing Zone	5	4.33	4.83	3	4.16	3.33	2.50	3.33	1.17	
Sustainability	2	1.83	1.67	1.66	1.83	1.83	1.33	1.50	1.00	
SUB-TOTAL	66	56.67	56.50	55.64	52.93	49.33	39.17	43.00	31.33	
TOTAL SCORE	117	103.83	99.99	99.12	95.74	94.33	85.00	69.50	62.50	

KCSARA Property Location and Costs
Addendum 2

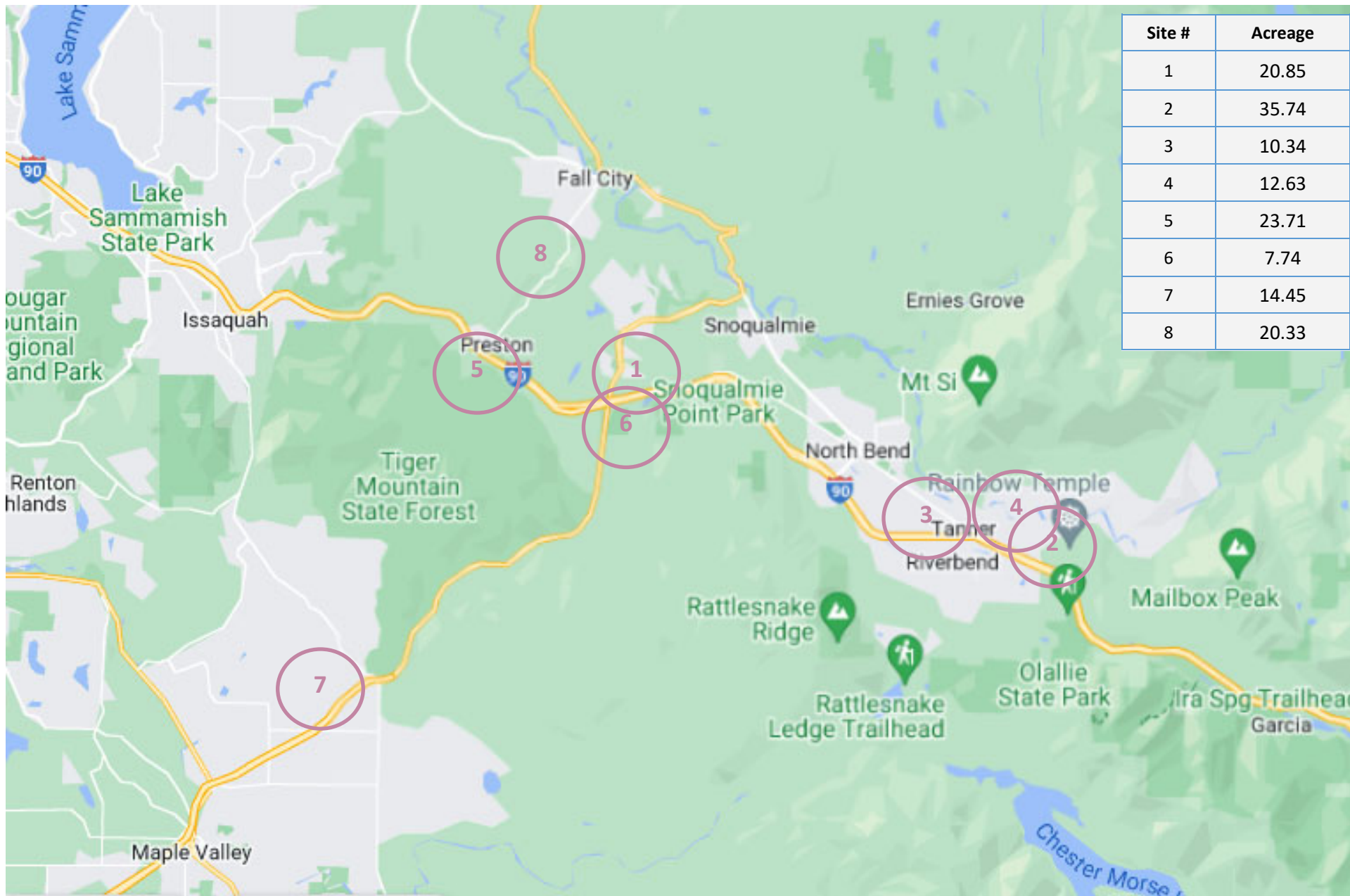
COMPONENTS	Site #1	Site #2	Site #3	Site #4	Site #5	Site #6	Site #7	Site #8
Geographical Location (see Addendum 3)								
Total Acres	20.85	35.74	10.34	12.63	23.71	7.74	14.45	20.33
Assessed Value (see **Disclaimer** below)	\$ 1,600,000	\$ 3,880,000	\$ 2,438,000	\$ 526,000	\$ 1,870,000	\$ 220,000	\$ 800,000	\$ 450,000
Estimated Cost of Building	\$ 6,162,374	\$ 6,162,374	\$ 6,162,374	\$ 6,162,374	\$ 6,162,374	\$ 3,648,450	\$ 3,648,450	\$ 3,648,450
Estimated Cost of Outbuilding	\$ 3,648,450	\$ 3,648,450	\$ 3,648,450	\$ 3,648,450	\$ 3,648,450	\$ 3,648,450	\$ 3,648,450	\$ 3,648,450
Total Estimated Cost of Buildout	\$ 11,410,824	\$ 13,690,824	\$ 12,248,824	\$ 10,336,824	\$ 11,680,824	\$ 7,516,900	\$ 8,096,900	\$ 7,746,900

SF of Proposed Building	14,200
Estimated Price per SF	\$433.97
Estimated Cost of Building	\$6,162,374.00
SF of Outbuilding	18,710
Estimated Price per SF	\$195.00
Estimated Cost of Outbuilding	\$3,648,450.00

****Disclaimer**** Land acquisition values, quoted as Assessed Value via King County iMap, do not indicate market value. Total acreage also does not indicate total buildable acres nor does it include the number of acres KCSARA will purchase when and if the property becomes available; therefore, the **Total Estimated Cost of Buildout** is just an estimate.

King County Search and Rescue Association - Site Options

Addendum 3





PROGRAM DOCUMENT
FOR

**KING COUNTY
SEARCH &
RESCUE
HEADQUARTERS**



August 3, 2020



King County Explorer Search & Rescue (ESAR)



King County Incident Support Team (IST)



King County 4x4 Search & Rescue (4x4)



Northwest Horseback Search & Rescue (NWHSAR)



Seattle Mountain Rescue (SMR)



Pacific Northwest Trackers Association (PNWTA)



Regional Special Vehicle Unit (RSVU)



King County Search Dogs (KCSD)



Ski Patrol Rescue Team (SPART)

TABLE OF CONTENTS

<u>SECTION</u>	<u>PAGE #</u>
Introduction	01
KCSARA Unit Structure	02
Program List	03-11
Program Plan Diagrams	
Overview	12
Auditorium	13-19
Kitchen	20
Lobby & Salesroom	21
KCSARA Boardroom	22
Classrooms	23-24
Offices & Storage	25
Mudroom & Laundry	26
Restrooms	27
Gear & Vehicle Cleaning Area	28
Vehicle Bays	29-36
Drop Testing & Rigging Training	37-39
Covered Outdoor Training	40
Outdoor Amphitheater	41
Meeting Notes	42-54
Unit Contacts	55

INTRODUCTION

Program Purpose

This program document has been assembled as the first building planning step in **King County Search & Rescue Association's (KCSARA)** goal of building a headquarter's facility. Since KCSARA's inception it has used temporary facilities to store unit equipment, host training sessions, and host meetings. In most cases Unit equipment is stored in members' personal homes or storage facilities. At the date of this document, KCSARA has a temporary storage and training facility located in Snoqualmie at the intersection of I-90 and highway 18 that is leased from Snoqualmie Valley Hospital. This facility is substandard for accommodating all KCSARA's goals. KCSARA has been exploring potential site locations for a Headquarters along the I-90 corridor. Although program discussions during the development of this document may have included references to specific sites under consideration, the purpose of this document is to establish a program that can be applied to any site that KCSARA engages.

Primary Program Goals

- New permanent headquarters facility
- Facility located not more than a 5-minute drive from I-90
- Provide secure and locked facilities for storage of Unit vehicles and equipment
- Provide space for public outreach, SAR training, meetings and fundraising events
- Facility located on a site with natural areas for field training

Secondary Program Goals

- Ability to host an Emergency Operations Center in coordination with King County
- Ability to host space as a satellite office for the King County Sheriff's office
- Ability to host space for other public emergency responders
- Facility to operate off-the-grid during emergency disaster events
- Facility to employ resilient and sustainable design strategies
- Facility to serve as a symbol of KCSAR's strength & capabilities

Program Document Development & Organization

KCSARA assembled a 'Wish List' compiled from each Unit's program needs and requirements. KCSARA's goals of accommodating an Emergency Operations Center, a vehicle space for the King County Sheriff's office as well as a potential association with public emergency responders also informed the program development. Simple plan diagrams were generated from the Wish List showing the spatial requirements for each room. Meetings were conducted with each Unit separately to obtain input on these diagrams. An all-Units meeting was conducted to discuss cross over program elements, shared use spaces and ultimately efficiency opportunities.

The document is organized into the following sections: program list (written), program plan diagrams, meeting notes, and Unit contacts. The program list has been refined and augmented from the initial Unit's 'Wish List.' Building support spaces (mechanical room, electrical room, generator space, etc.) were simply listed and allocated an estimated square footage based on historical ratios. Site related program elements for outdoor training areas are also listed. The program diagrams represent the result of multiple Unit reviews and revisions. The meeting notes represent Unit comments at the time and do not necessarily represent the final program elements. The final section lists the Unit contacts that were engaged for program review and input.

KCSARA UNIT STRUCTURE

KCSARA is a confederation of nine search and rescue non-profit organizations (Units). Each Unit is established as a non-profit with their own administrative personnel: president, treasurer, etc. The KCSARA Board is made up of the designated representatives from each Unit. The following lists the Units and their purpose:

King County Explorer Search & Rescue (ESAR) is a youth-based organization that is the county's primary ground search and non-technical rescue unit. It responds to more than 150 missions each year in King County and around the state of Washington. In addition to providing a team for basic ground search and rescue, King County ESAR also maintains an advanced technical rescue team, a mountain bike search team, and a group of county- and state-certified emergency medical technicians.

King County 4x4 Search & Rescue (4x4) primary mission is to provide transportation to other search and rescue organizations by using all-wheel drive vehicles to negotiate terrain that conventional vehicles cannot. This unit is also equipped to conduct night road searches, traffic control, radio relay and other logistical support functions.

King County Search Dogs (KCSA) provides canine search services within King County. All handlers are volunteers who provide their own dogs and outdoor equipment. Each team trains in either air scent search (to locate any human within the team's search area) or tracking/trailing (following a specific person's scent path). Teams also train in specialty search areas, such as evidence, water, disaster, and avalanche searches.

Seattle Mountain Rescue (SMR) is a volunteer organization of more than 100 mountain climbers dedicated to saving lives through back-country search and rescue and mountain safety education. The organization is a primary first responder for all-season search, rescue, and recovery operations in mountainous and hazardous terrain throughout the State of Washington. SMR specializes in "high angle" and "high hazard" operations but, also have a wealth of experience in all phases of low country search and rescue.

Ski Patrol Rescue Team (SPART) provides emergency medical/trauma care in wilderness environments year round to the citizens of King County. This work includes getting to people in need in mountain areas and in avalanches, and administering medical care. SPART supports King County Search and Rescue by maintaining two equipment caches stocked with safety and rescue gear.

Northwest Horseback Search & Rescue (NWSAR) members are qualified horse owners who volunteer their time as a horse-and-rider team to aid in the search for lost, injured, or missing people. Teams also assist in transporting equipment, such as medical supplies, litters, and radios. Volunteers are equipped to transport people to safety either by litter or on horseback.

Pacific Northwest Trackers Association (PNWTA) is dedicated to using tracking skills for search and rescue. PNWTA participates in "lost person" and evidence searches, and we have developed a training program to teach tracking skills to other interested groups.

King County Incident Support Team (IST) provides incident command system expertise for incident management, planning, logistics, administration, and communications at search and rescue missions and large scale special events in King County, Washington. IST training is of an all-hazards nature, we maintain capability to support other types of incidents if deployed.

Regional Special Vehicle Unit (RSVU) provides special search vehicles for diverse weather and terrain conditions such as snowmobiles, ATVs, UTV, and a snowcat.

PROGRAM LIST

GENERAL NOTES

50-Year Projected Needs

Member Proximity: No more than a 25 minute drive from the intersection of I-90 and I-5

Headquarters Location: In the I-90 corridor between Issaquah and North Bend

Headquarters Proximity: No more than 5 minutes from I-90

Program room square feet: See Plan Diagram section.

KCSARA Core Competency Training Needs

Search Techniques, Clue Awareness, Crime Scene, GPS Operation, Helicopter Safety, Land Navigation, Legal Issues, Radio Communications, Rescue Techniques, Searcher Safety, Search Organization, Survival Skills & Equipment, Emergency Medical Training (CPR, EMS, Searcher First Aid, Wilderness First Aid, EMT)

MAIN CAMPUS BUILDING

Auditorium

Elements

- Table and chair storage direct access
 - Acts as central table & stair storage for facility, access from corridor also
- Medical training equipment storage direct access
- Motorized, segmented & acoustical wall partition
- Audio / Visual & server room adjacent
- High ceilings
 - Emergency Operations Center requires approx. 12 – 14 ft., min. 10 ft.
 - Potential use of structure for rigging anchors & indoor training (similar to Seattle Mountaineers' facility)
- 2 Drop down screens positioned for use on each side of auditorium when wall partition engaged
- Power receptacles in floor
- Dry erase boards on perimeter walls; 2 at 15 ft. & 1 at 30 ft.

Large Seating Events

- 200 – 300 person seating capacity
- Presentation / Lecture space
- ESAR Graduation – annual event

Large Dining Events

- 100 – 120 person seating capacity
- Round table dining format
- Presentation / Lecture space
- Serving buffet table space
- Roll up door for service from kitchen
- Fundraising & public outreach events

PROGRAM LIST

Large Training Events

- 100 – 140 person seating capacity
- Rectangular table format
- Presentation / Lecture space

Unit General Membership Meetings

- 60 - 80 person seating capacity
- Teleconferencing & A/V equipment

Emergency Operations Center

- Potential use in collaboration with King County EOC
 - Training and actual emergency events
- 10 - 15 seating capacity initial King County EOC requirement
 - Can accommodate up to 30-35 seating capacity
- Radio and satellite communications (IST)
 - Doubles as training center
 - 4 stations
 - Acoustic separation from other spaces
 - Radio grounding requirements high frequency, higher voltage power supply required
 - Secure storage compartment for sensitive documents
 - Transmission tower approx. 100 ft. tall
 - Could be added to privately owned cell tower

Training Events – Wall partition engaged

- Presentation / Lecture space
- Digital display on presentation wall
- 60 – 70 seating capacity with tables
- 140 – 150 seating capacity with only chairs

Required Room Adjacencies:

- 2 classrooms need to attach to main auditorium per King Co EOC request
 - EOC conference / meeting rooms
- Chair and table storage
- Medical training equipment storage
- Radio & satellite communications
- Kitchen
- Lobby
- A/V & server

Lobby

- Hearth / fireplace
- Welcome desk
- Wifi & USB charging stations
- 20 – 25 seating capacity couches and tables
- Award cases
- Sales room with roll up door and display & storage for logo gear, apparel, etc.

PROGRAM LIST

Classrooms

- 4 classrooms
- 40 – 45 seating capacity with chairs only
- 20 – 25 seating capacity with tables
- 12 – 15 cots for indoor overnight accommodations for trainers
- Consider motorized, moveable & acoustic wall partitions
- Boardroom meetings – 2 classrooms with wall partition open
- EOC meeting rooms – 2 classrooms with wall partition closed
- Dry erase boards
- Drop-down screens
- 2 classrooms adjacent to Auditorium per King Co EOC request

Boardroom

- 30 – 40 person seating capacity – used once a month
- 30 chairs at table & 10 chairs at room perimeter
- AV and teleconferencing equipment
- Prefer U-shaped table layout
- Dry erase boards
- Drop down screen
- Consider boardroom doubles as 2 classrooms with moveable wall partition

Administration Offices & Workspace

- 1 executive office - KCSARA
- 1 facility manager office – full time staff
- 2 standard offices shared use
 - CARE Team use
 - Comfort room with extra chair for 1 on 1
 - Teleconference capabilities
- Unit workspace
 - Informal meeting with work table
 - 2 – 3 flex work stations
 - Power & data connections for laptops & battery charging
 - Laser printer
 - Office supply storage
 - Dry erase board
- Unit storage closets
 - Secure & locked
 - Storage of unit paperwork (1 file cabinet), outreach materials, etc.

Commercial Kitchen & Food Storage

- Roll up metal door for serving to auditorium
- Commercial 48” fridge and 48” freezer
- 2 commercial ranges
- 3 compartment sink
- 1 regular kitchen sink
- Commercial dish washer
- Lots of countertop surface & cabinet storage
- Large dry food storage/emergency supplies
 - Direct access to unloading vehicle stall – no raised dock
- Required adjacency to Auditorium

PROGRAM LIST

Mud Room

- Auxiliary entrance
- Area to hang wet packs, coats & dirty boots
 - 6 – 8 people
- Temporary hanging & floor storage
- Bench
- Potentially locate in more secure area, maybe provides access to secure part of building

Required Room Adjacencies:

- Laundry
- Outdoor covered area
- Restrooms & showers
- Classrooms

Laundry

- Commercial washer/dryer 1 each
- Janitorial storage
- Mop sink
- Laundry sink
- Cabinets & countertops

Indoor Bathrooms

- Number of fixtures based on code occupant loads
- Men's – see plan diagrams (will change based on future design work)
- Women's – see plan diagrams (will change based on future design work)

Locker & Shower Room

- Men's – 3 showers, 6 cubbies & hangers
- Women's – 3 showers, 6 cubbies & hangers

Support spaces

- Corridors, mechanical, closets / storage, stairs, elevators
- Generator space
 - 400 – 600 amp, 3 phase generator, 100 – 200 KW output, diesel
 - Unit size approximately 5 ft. x 7 ft., provide 5 ft. clear space all around
 - Permanent mount

VEHICLE GARAGE, EQUIPMENT STORAGE & TRAINING

General

- Security measures to protect training equipment and vehicles from non-member visitors
- Garage can be one large space, all bays open to each other
- Garage to be a conditioned space
- Potential to be used as large auditorium space for events
- Levels of security:
 - General membership – no access to vehicle bays / Unit storage
 - Van drivers & Training staff – access to vehicle bays / Unit storage
 - Senior leadership & equipment manager – access to all above including locked cabinets in the Unit storage for expensive & supplemental equipment

PROGRAM LIST

Vehicle Storage

- All bays standard elements
 - Bay size - width 15 ft. x depth 55 ft.
 - Bay door 12 ft. width x 14 ft. height OCO
 - Height 18 ft. (16 ft. minimum clearance from anything mounted to ceiling)
 - AC power recharging for vehicles
 - Bay back, front & ceiling drops at mid bay
- 13 Vehicle bays
 - 1 KCSARA bay
 - 2 Ford F350 stacked parking
 - 2 ESAR bays
 - Adjacent to rigging training & drop testing area
 - Command van
 - Rescue truck Ford F350
 - Gear & rope drying enclosure each bay
 - 20 ft. depth x 15 ft. width
 - locked chain link enclosure
 - 2 4x4 bays
 - Adjacent to vehicle tool storage space
 - Command van
 - Rescue truck Ford F350
 - Mitsubishi Montero – stacked parking behind
 - Not as critical in quick response
 - Space for temporary drying of equipment
 - 2 SMR bays
 - Adjacent to rigging training & drop testing bay
 - 2 Trucks Ford F350
 - Gear & rope drying enclosure each bay
 - 20 ft. depth x 15 ft. width
 - locked chain link enclosure
 - 1 KCSD bay
 - 1 Truck Ford F250 with boat & trailer - 46 ft. total
 - Always hooked up for quick response
 - 2 RSVU bays
 - 1 Truck Ford F350 with UTV trailer (6 seat UTV)
 - Always hooked up for quick response
 - 2 ATV trailer
 - Snowtrack trailer (7 person)
 - Enclosed trailer to go in outside covered area
 - 4" diameter bollard outside garage for winch winding
 - Requested drive through bay capability, doors at either end
 - 1 King County Sheriff Office bay
 - 2 vehicles stacked parking
 - 2 spare bays

PROGRAM LIST

Vehicle Maintenance

- Maintenance on automobiles done at a certified shop, SAR members do not work on autos
- Majority of maintenance by members is on equipment – communication equipment, emergency lighting, etc.
- Provide a tool storage & work bench area
 - Rolling tool cabinets for all units to share
 - End of garage structure or centrally located for ease of access
- RSVU members work on ATVs, UTV, & snowtrack
 - RSVU dedicated tools located in RSVU locked storage
 - ATV hoist - <https://www.discounttramps.com/powersport/atv/lift/p/UF-2200EH-X/> or similar

Vehicle & Gear Cleaning

- Vehicle Cleaning bay open air & covered
 - 15 ft. width x 30 ft. depth
 - 2 hose bibs with high pressure hoses
 - Concrete floor with drains to effluent interceptor tank – water pollution control
- Gear cleaning open air & covered
 - Space for training events of 30 – 35 people
 - Provide electrical connections around perimeter
 - 1 unisex bathroom
 - 1 water closet, 1 lavatory
 - 1 laundry room
 - 1 washer & 1 dryer
 - 'Extractor' type - <https://unimac.com/> or similar (clean blood & biohazard materials)
 - 2 water fountains
 - Benches around perimeter
 - 4 compartment sink
 - Equipment table & counters
 - Covered, open air & secure gear drying enclosure
 - Dog wash station
 - 3 ft. x 5 ft.
 - Warm water hook up
 - Concrete floor with drains to effluent interceptor tank at locations where soap & other detergents are used – water pollution control

Equipment Storage

- Recommend equipment storage at end of each bay for unit storage
- 12 ft. depth x 15 ft. width
- 10 ft. height; open storage mezzanine above (ladder or forklift access)
- Roll up garage door 8 ft. x 8 ft.
- Storage locked and secure
- Provide locked cabinets inside storage space for expensive & sensitive equipment
- No rope or gear drying in this storage space
- Conditioned
- Units to customize shelves, hangers, cabinets in their respective storage

PROGRAM LIST

Equipment Storage

- Units with unique requirements
 - KCSD
 - Dry storage
 - 9 ft. width x 12 ft. depth
 - Roll up garage door 4 ft. x 8 ft.
 - Human Remains Detection (HRD) storage locked
 - 6 ft. width x 12 ft. depth
 - 9 – 10 cu. ft. freezer
 - 6 ft. work table with drawers below for cutting boards, knives, etc.
 - Must maintain air separation between HRD & Dry storage so as not to pass odors to Dry storage items
 - RSVU
 - Secure vehicle tool storage
 - Open 2 typical storage areas into 1 large area
 - Maintain 2 garage doors
 - Trackers, UAS & 2 extra storage areas
 - Secure locked storage
 - 8 ft. width x 8 ft. depth
 - Roll up garage door 4 ft. x 8 ft.
 - SPART
 - Does not need storage at headquarters, all storage needs are at Snoqualmie ski areas, shared storage with resort ski patrol
 - SAR Horses
 - Does not need storage at headquarters, all storage needs are located at member's personal residences
 - Maybe storage of 1 horse trailer at headquarters open air
 - KCSARA shared resources (rescue mannequins, etc.)

Indoor Rigging Training & Drop Testing (SMR & ESAR)

- Ceiling height minimum 40 ft, prefer 50 ft.
- Climbing wall height minimum 30 ft., prefer 40 ft.
- Landing at top of climbing wall
 - Minimum 10 ft. deep, protocol 3 meters between edge & anchor, prefer 5 meters
 - Width to handle up to 30 people
 - Access by internal stair
- Rigging anchors rated to minimum 4,400 lbs.
 - 8 rigging anchors on wall at back of landing
 - 4 rigging anchors on ceiling above climbing wall edge
- Potential outdoor training on roof & outside wall
- If located in vehicle garage, prefer to locate at one end
- Drop testing, preferably indoors
 - 450 lb. load for testing
 - 2 anchor points in roof structure
 - 1 power winch each anchor point or 1 adjustable winch for both anchor points
 - Anchor drop point to wall horizontal separation 2 ft minimum
 - Anchor drop points to handle minimum shock load of 6,000 lbs potentially more
 - Catwalk opposite side of drop anchor from wall
 - catwalk edge 1 ft horizontal from anchor
 - Camera located 30 ft away from anchor point
 - Position 20 ft. above finished floor
 - Catwalk access to camera
 - Protect finish floor under drop points from impact damage either:
 - Provide moveable impact matt, or
 - Insert impact resistant floor system flush with surrounding floor surfaces

PROGRAM LIST

SITE PROGRAM

Outdoor amphitheater

- 200 person seating capacity, benches
- Central fire pit
- 2 tables
- Covered stage?
- Wired with electricity?

1 covered, open air training area

- 20 ft. height for basic rigging training
- 2 rigging anchor points at peak, 1-2 people ascending
- 25 – 35 person seating capacity

1 covered, open air eating area

- Adjacent to kitchen
- 30 person seating capacity, picnic tables

8 covered trailer bays

- 1 RSVU enclosed trailer
- 5 4x4 – 2 cargo & 3 future

Outdoor Restrooms

- Used during training events of 30 – 40 people, 10 – 20 staff members
- Propose connect to main building, but no direct access into building
 - Final site selection will determine if separate structure is beneficial
- Adjacent to gear cleaning, mud room, laundry room
- Men's – see plan diagrams (will change based on future design work)
- Women's - see plan diagrams (will change based on future design work)
- 2 water fountains outside
- 1 exterior sink

5 Storage Containers – Connex

Number of parking stalls governed by jurisdictional code

- KCSARA Wish List estimation – 50 full time & 70 overflow
- SAR Horse will not store horse trailers at headquarters except maybe 1 trailer
- KCSD would like shaded parking to leave dogs in cars temporarily
- Parking for 20 special vehicle trailers(4X4)

PROGRAM LIST

SITE PROGRAM

Site Training Preferences

- Walking access to land navigation course
 - 5 acre compass wheel
 - 500 acre compass runs and location problems area
- Mock search course 500 acres, could double with land navigation
- Bivouac sites (ESAR) for 40 people covering approximately 3 acres
- Outdoor litter handling course (ESAR)
- Overnight Training (Survival Skills, Land Navigation, Search)
- 4x4 driving course 1/4 mile (4X4 & RSVU)
 - Most training out on forest service roads, not at headquarters
 - 2 – 3 training events per year
 - Training in snow necessary
- Winch/tow training area (4X4)
- Helicopter ground team training area (4X4)
 - Most training done in native forest areas off of forest service roads, not at headquarters
 - If headquarters allows – 90 ft. x 90 ft. up to 150 ft. x 150 ft. training area
 - Allow for an Army Huey type helicopter landing
- River or lake shore access for searcher safety training (ESAR)
 - If available, training occurs on natural shoreline, no built structures or cleared pads
- **Drone (UAV) Additional Training Needs**
 - Drone LZ training area (not in trainee parking area)
 - Riverbank search training area
 - Steep slope search training area
 - 60ft at 60 degrees and 90 degrees
- **CERT (disaster) (Community Emergency Response Team) Additional Training Needs**
 - Light urban Search & Rescue training area
 - Light extrication and cribbing training area
 - Fire suppression training area

PLAN DIAGRAM OVERVIEW

APPROXIMATE SQUARE FEET

HEADQUARTERS BUILDING

PROGRAM SPACES: 11,300 SQ. FT.

SUPPORT SPACES: 2,825 SQ. FT.

25% OF PROGRAM SPACES

TOTAL: APPROX. 14,200 SQ. FT.

VEHICLE GARAGE

VEHICLE BAYS: 10,965 SQ. FT.

EQUIPMENT STORAGE: 2,596 SQ. FT.

CLEANING & WASHING: 1,485 SQ. FT.

RIGGING & DROP TESTING: 930 SQ. FT.

TOTAL: APPROX. 16,000 SQ. FT.

OUTDOOR STRUCTURES

AMPHITHEATER: 1,480 SQ. FT.

2 COVERED SPACES: 1,230 SQ. FT.

POTENTIAL CONSTRUCTION TYPES

TYPE II B - SPRINKLERS

TYPE IV - NO SPRINKLERS FOR CLASS B

TYPE IV - SPRINKLERS FOR CLASS A-3

TYPE V A - SPRINKLERS

OCCUPANCY CLASSIFICATION

PRIMARY USE: BUSINESS GROUP B

SUBORDINATE USE: ASSEMBLY GROUP A-3

AUDITORIUM USED FOR LARGE EVENTS

RECEPTION USED FOR LARGE EVENTS

OCCUPANT LOADS

ASSEMBLY CLASS:

AUDITORIUM: 7 NET - 428

STORAGE: 300 GROSS - 2

KITCHEN: 200 GROSS - 4

A/V: 300 GROSS - 1

RECEPTION: 7 NET - 186

SALES: 60 GROSS (STORAGE 300) - 3

BUSINESS CLASS:

CLASSROOMS: 20 NET - 118

BOARD ROOM: if used also as classrms 0

OFFICES: 150 GROSS - 7

UNIT CLOSETS: 300 GROSS - 2

MUD ROOM: 300 GROSS - 1

LAUNDRY: 300 GROSS - 1

SUPPORT SPACES: 18

TOTAL OCCUPANT LOAD: 775

AUDITORIUM - LAYOUTS

AUDITORIUM USES & ROOM LAYOUTS

1 AUDITORIUM - LARGE EVENTS

ITEMS

AUDITORIUM: 3,000 SQ. FT.
STORAGE: 320 SQ. FT.
MEDICAL STORAGE: 180 SQ. FT.
A/V SERVER ROOM: 64 SQ. FT.
PARTITION STORAGE: 40 SQ. FT.
308 SEATS: SEAT SIZE - 21" X 22"
2 DROP DOWN SCREENS
2 DRY ERASE 15 FT & 1 DRY ERASE 30 FT.
6 STORAGE DOLLIES: 21" X 35"
35-40 CHAIRS PER DOLLY
ACOUSTIC FOLDING PARTITION

CODE REQUIREMENTS

OCCUPANCY: ASSEMBLY
2 EXITS REQUIRED
OCCUPANT LOAD: 432
AISLE: 48" MIN.
AISLE ACCESSWAY: 12" MIN.

REQUIRED ROOM ADJACENCIES

KITCHEN
2 CLASSROOMS

2 AUDITORIUM - DINING EVENTS

ITEMS

120 SEATS: 6 SEATS PER TABLE
20 TABLES: 5 FT. DIA.

3 AUDITORIUM - LARGE TRAINING EVENTS

ITEMS

144 SEATS: 2 SEATS PER TABLE
72 TABLES: 2 FT. X 5 FT.

4 AUDITORIUM - TRAINING EVENTS

ITEMS

CLASSROOM: 1,512 SQ. FT.
72 SEATS
36 TABLES: 2 FT. X 5 FT.

CODE REQUIREMENTS

OCCUPANCY: ASSEMBLY
2 EXITS REQUIRED
OCCUPANT LOAD: 101
AISLE: 48" MIN.
AISLE ACCESSWAY: 12" MIN.

5 AUDITORIUM - TRAINING EVENTS SEATS

ITEMS

SEMINAR: 1,512 SQ. FT.
154 SEATS

CODE REQUIREMENTS

OCCUPANCY: ASSEMBLY
2 EXITS REQUIRED
OCCUPANT LOAD: 216
AISLE: 48" MIN.
AISLE ACCESSWAY: 12" MIN.

6 EMERGENCY OPERATION CENTER OPERATIONS SUITE

ITEMS

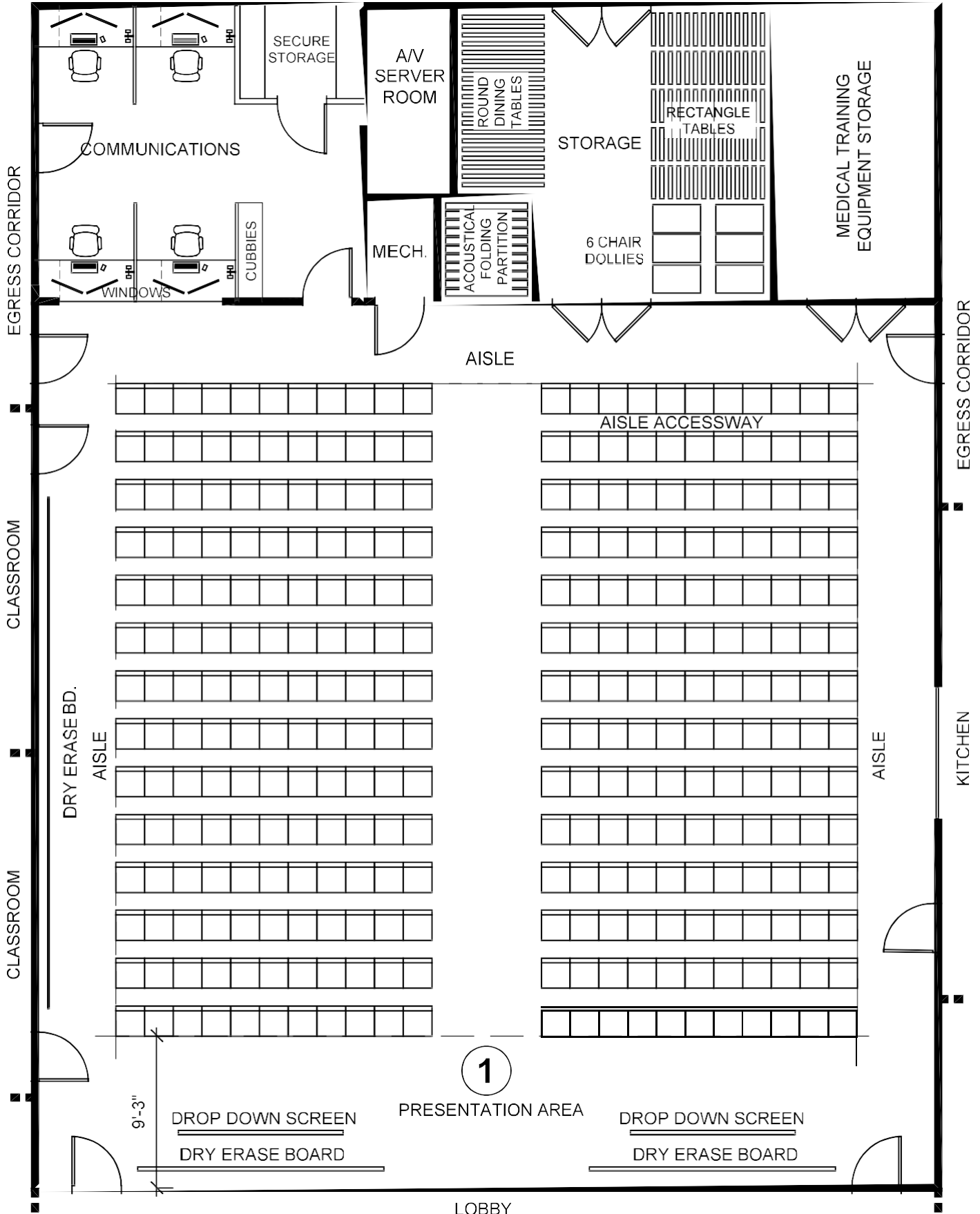
ROOM HEIGHT: 10 FT. MIN. 12 - 14 FT.
2 DROP SCREENS 10 FT. LONG
1 DRY ERASE BOARDS 30 FT.
30 STATIONS - 40 SQ. FT. PER STATION
3 EXECUTIVE STATIONS

7 RADIO / SATELLITE COMMUNICATIONS

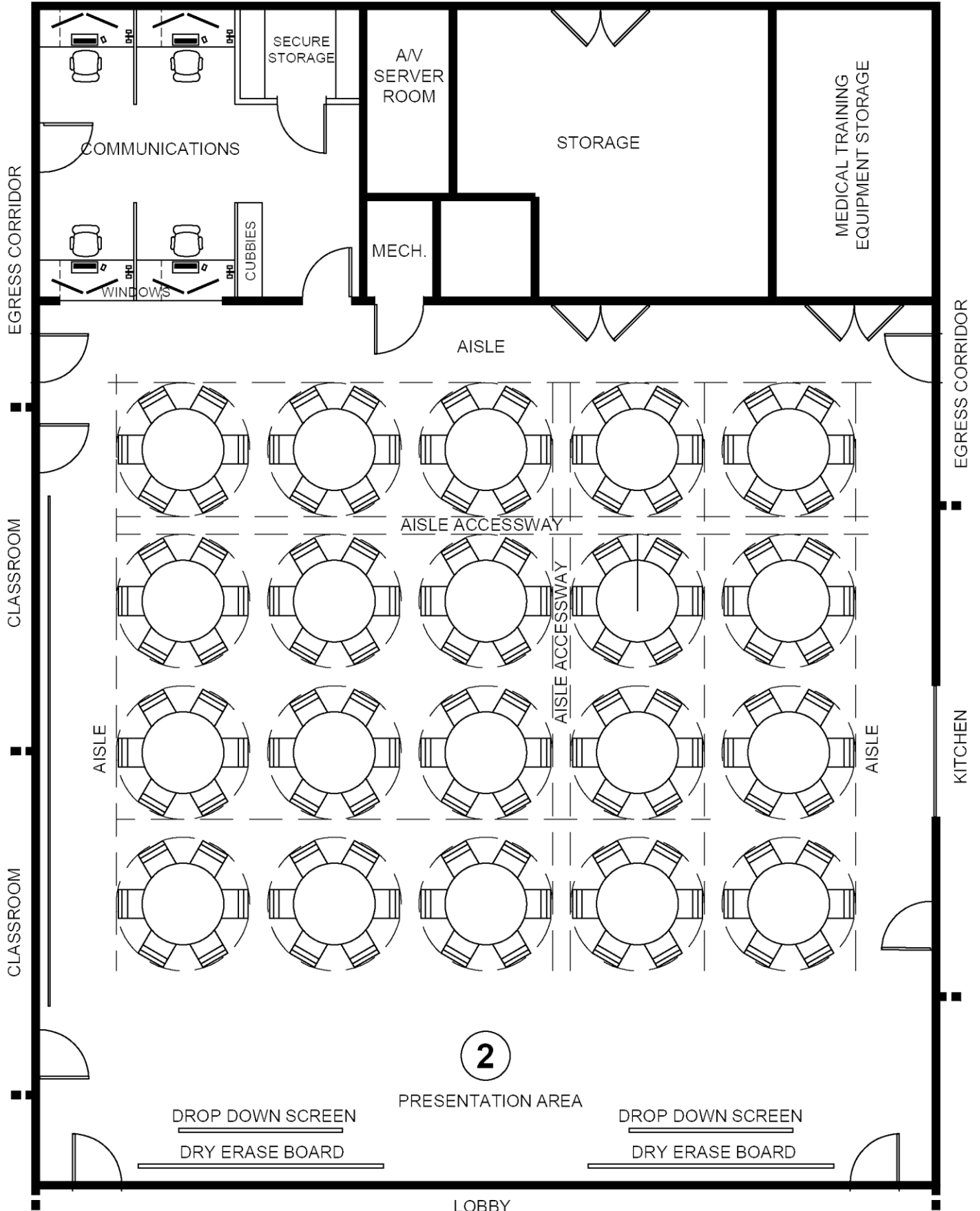
ITEMS

ROOM: 360 SQ. FT. (150 SF MIN. + 100 SF/SEAT)
EACH DESK: 6 FT. X 2.5 FT., 1.5 FT. DRAWERS
COMPUTER: 2 MONITORS 24", KEYBOARD, MOUSE
RADIO HEADSET
WINDOWS REQUIRED TO EOC -
OPERABLE & LOCKABLE W/ BLINDS
ACOUSTIC SEPARATION FROM OTHER SPACES
SECURE STORAGE COMPARTMENT

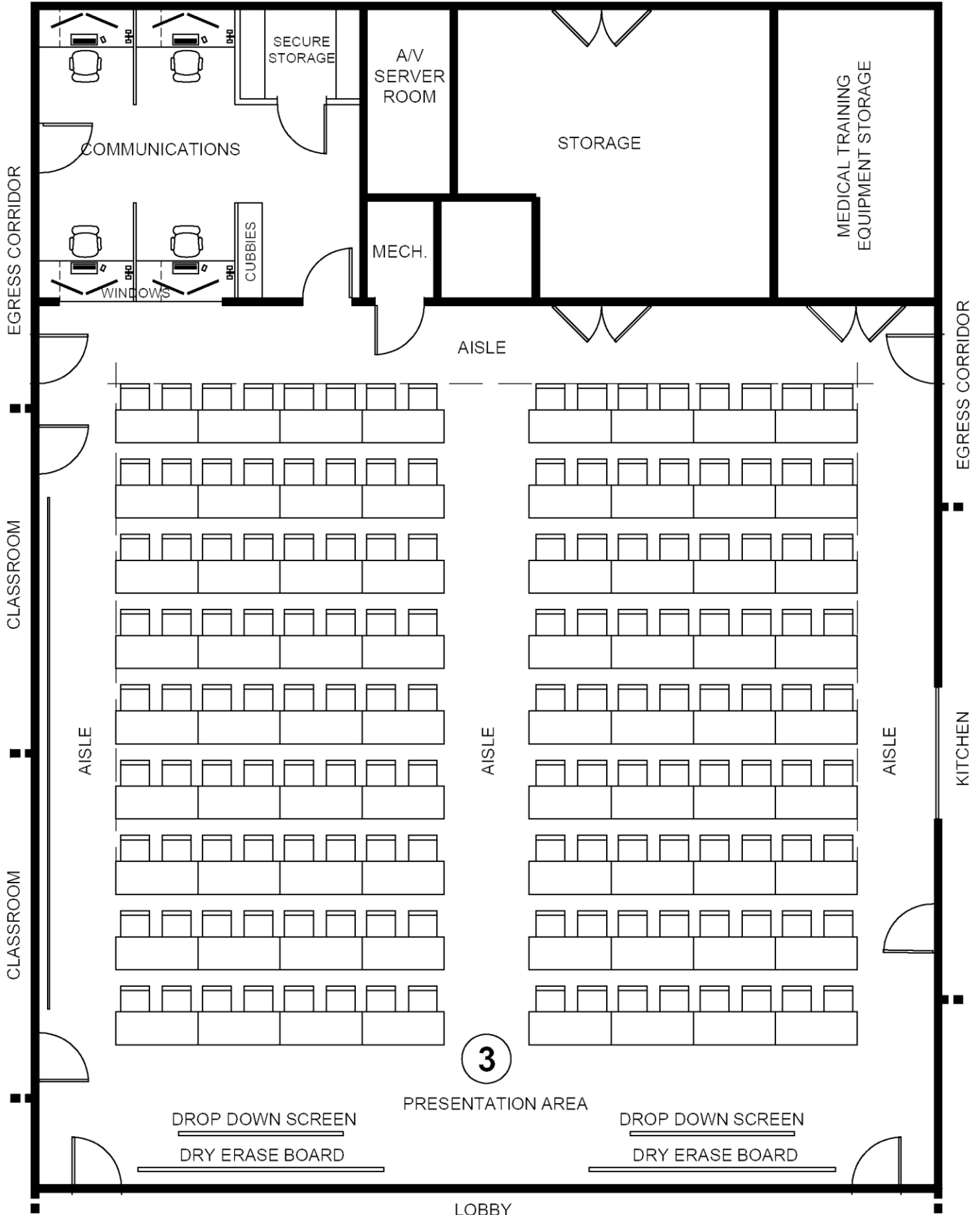
AUDITORIUM - LECTURE



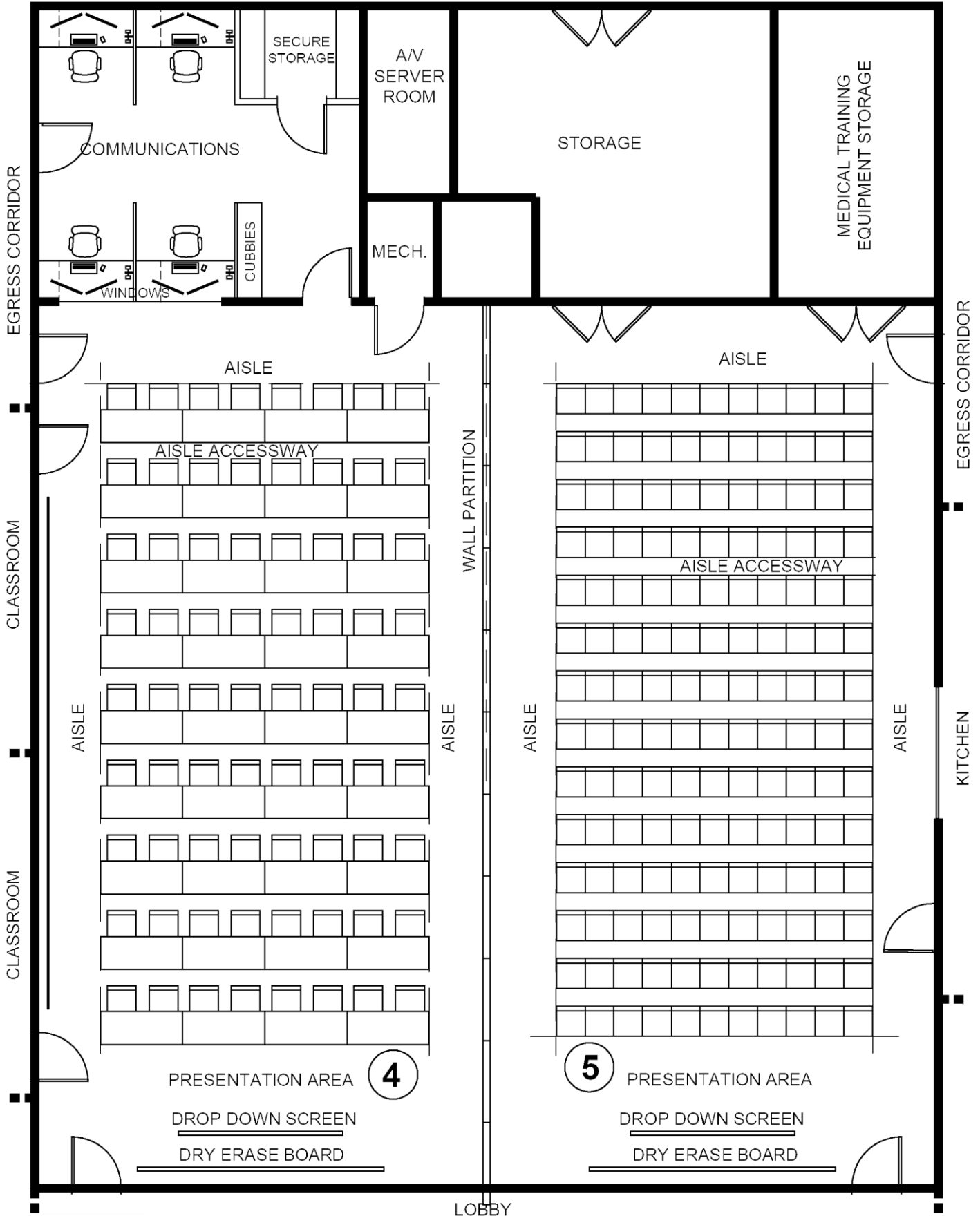
AUDITORIUM - DINING



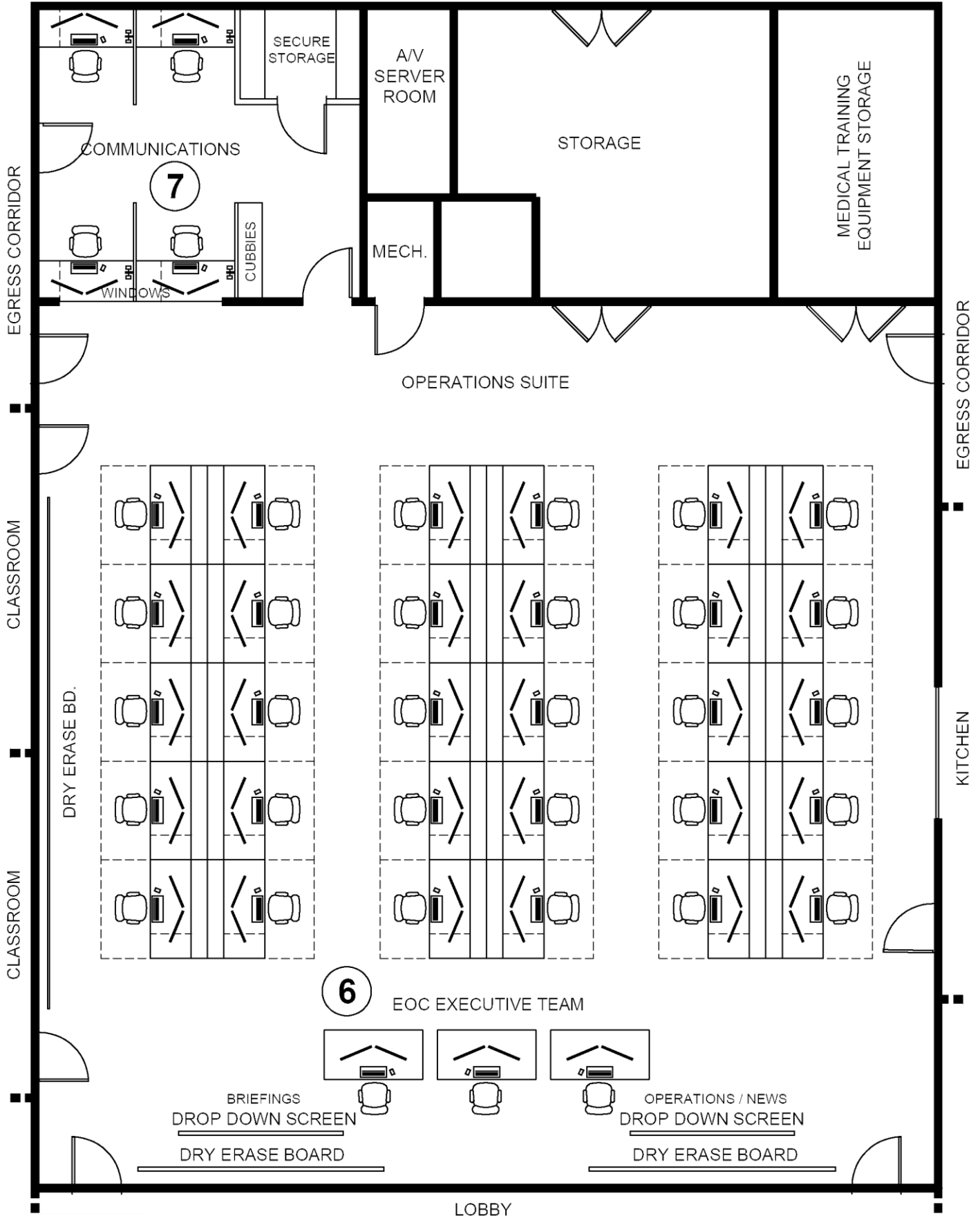
AUDITORIUM - LARGE TRAINING



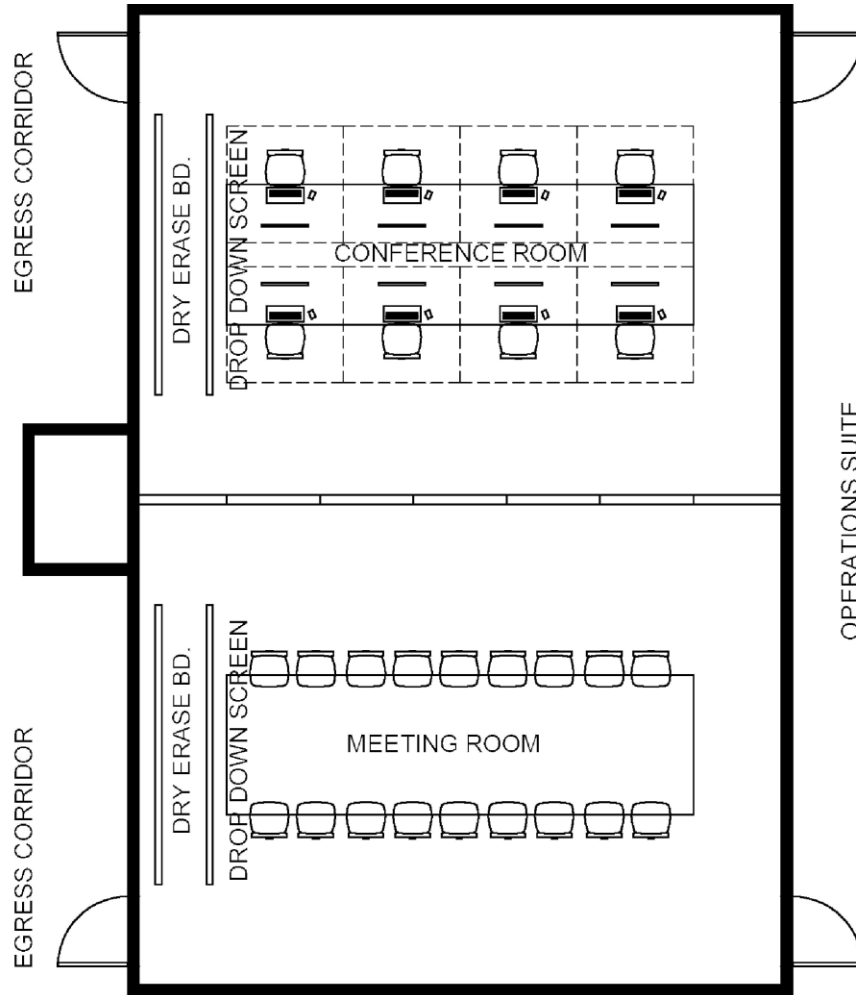
AUDITORIUM - TRAINING



AUDITORIUM - EOC



EOC MEETING ROOMS



COMMAND CONFERENCE ROOM - USE CLASSROOMS

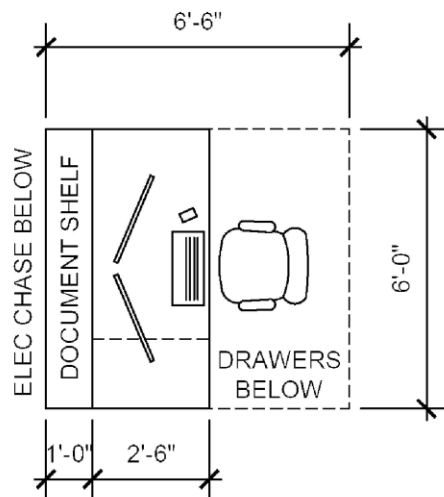
ITEMS

- ROOM: 588 SQ. FT.
- EACH CHAIR: 5 FT. X 5 FT. SPACE
- COMPUTER: 1 MONITOR 24", KEYBOARD, MOUSE
- WINDOWS REQUIRED TO EOC & COMMUNICATIONS - OPERABLE & LOCKABLE W/ BLINDS
- ACOUSTIC SEPARATION FROM OTHER SPACES
- DRY ERASE BOARD 12 FT.
- DROP DOWN SCREEN 8 FT.

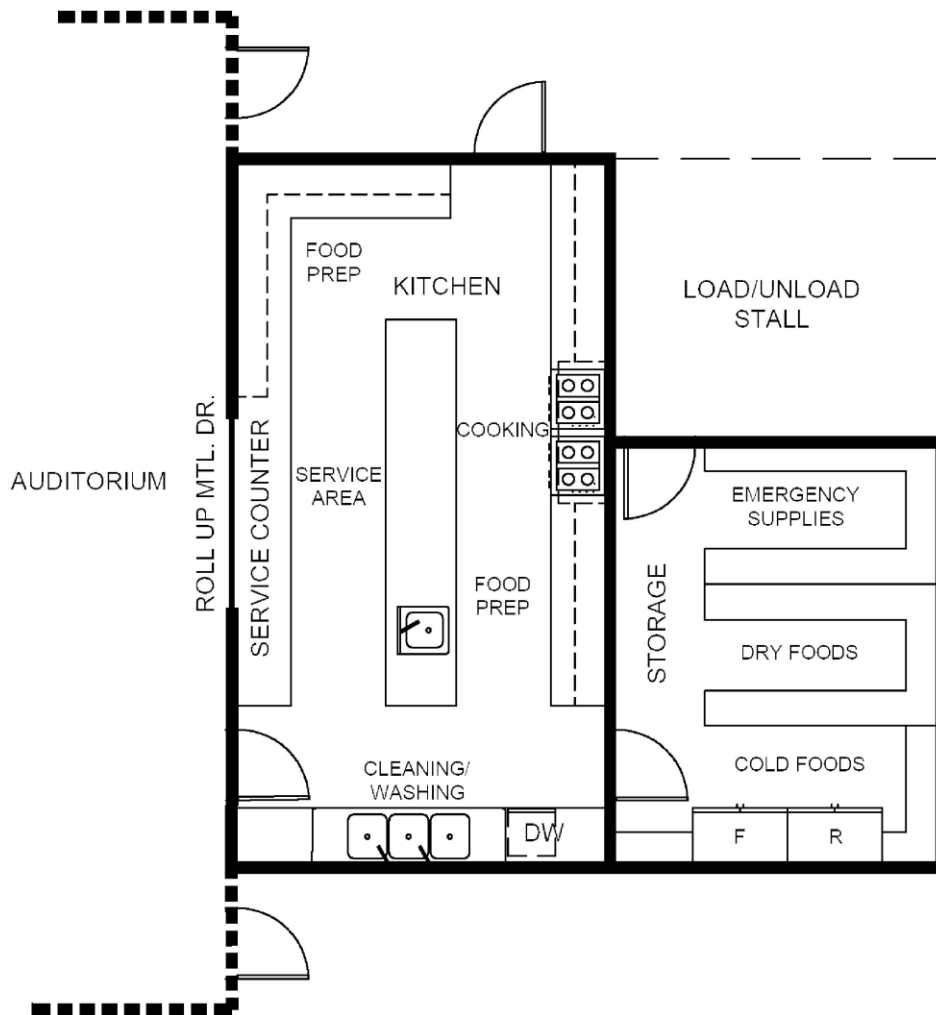
TYPICAL OPERATION SUITE STATION

ITEMS

- STATION AREA - 40 SQ. FT.
- DESK: 6 FT. X 2.5 FT., 1.5 FT. WIDE DRAWERS
- COMPUTER: 2 MONITORS 24", KEYBOARD, MOUSE
- DOCUMENT SHELF AT DESK HEIGHT
- EQUIPMENT & CABLING CHASE BELOW DOCUMENT SHELF



KITCHEN



COMMERCIAL KITCHEN

ITEMS

KITCHEN: 480 SQ. FT.
 8 FT. ROLL UP METAL DOOR
 1 DISH WASHER
 2 30" COMMERCIAL RANGES
 1 (3) COMPARTMENT SINK
 1 HANDWASH/FOOD PREP SINK
 COUNTERTOP: 70 LINEAR FT.
 UPPER CABINETS: 35 LINEAR FT.

FOOD STORAGE

ITEMS

STORAGE: 250 SQ. FT.
 COLD FOOD: 12 LF X NO. SHLVS.
 DRY FOOD: 20 LF X NO. SHLVS.
 EMERGENCY: 20 LF X NO. SHLVS.
 1 48" COMMERCIAL REFRIGERATOR
 1 48" COMMERCIAL FREEZER

LOBBY & SALES ROOM

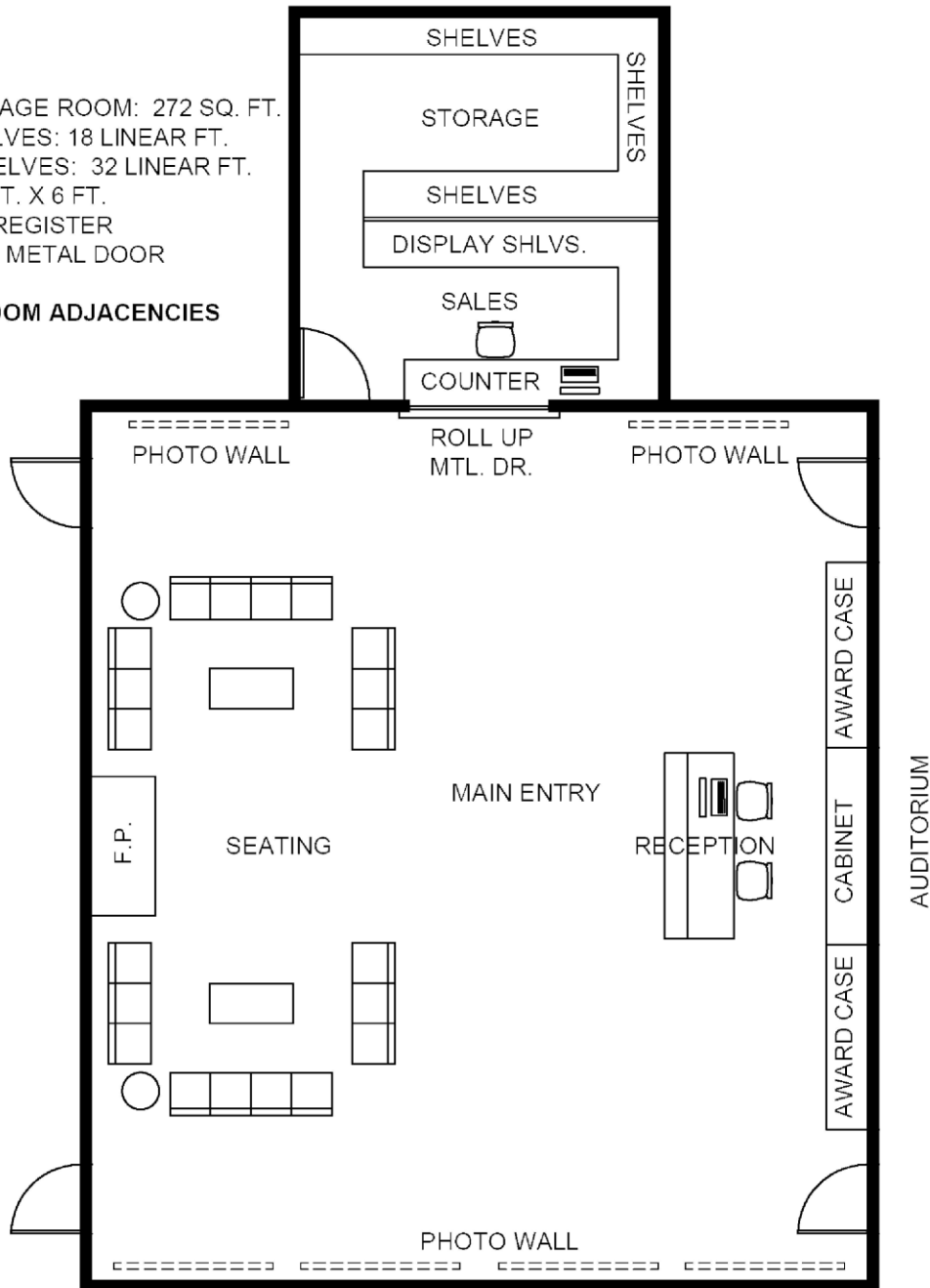
SALES ROOM

ITEMS

SALES / STORAGE ROOM: 272 SQ. FT.
 DISPLAY SHELVES: 18 LINEAR FT.
 STORAGE SHELVES: 32 LINEAR FT.
 COUNTER: 2 FT. X 6 FT.
 COMPUTER / REGISTER
 6 FT. ROLL UP METAL DOOR

REQUIRED ROOM ADJACENCIES

MAIN ENTRY

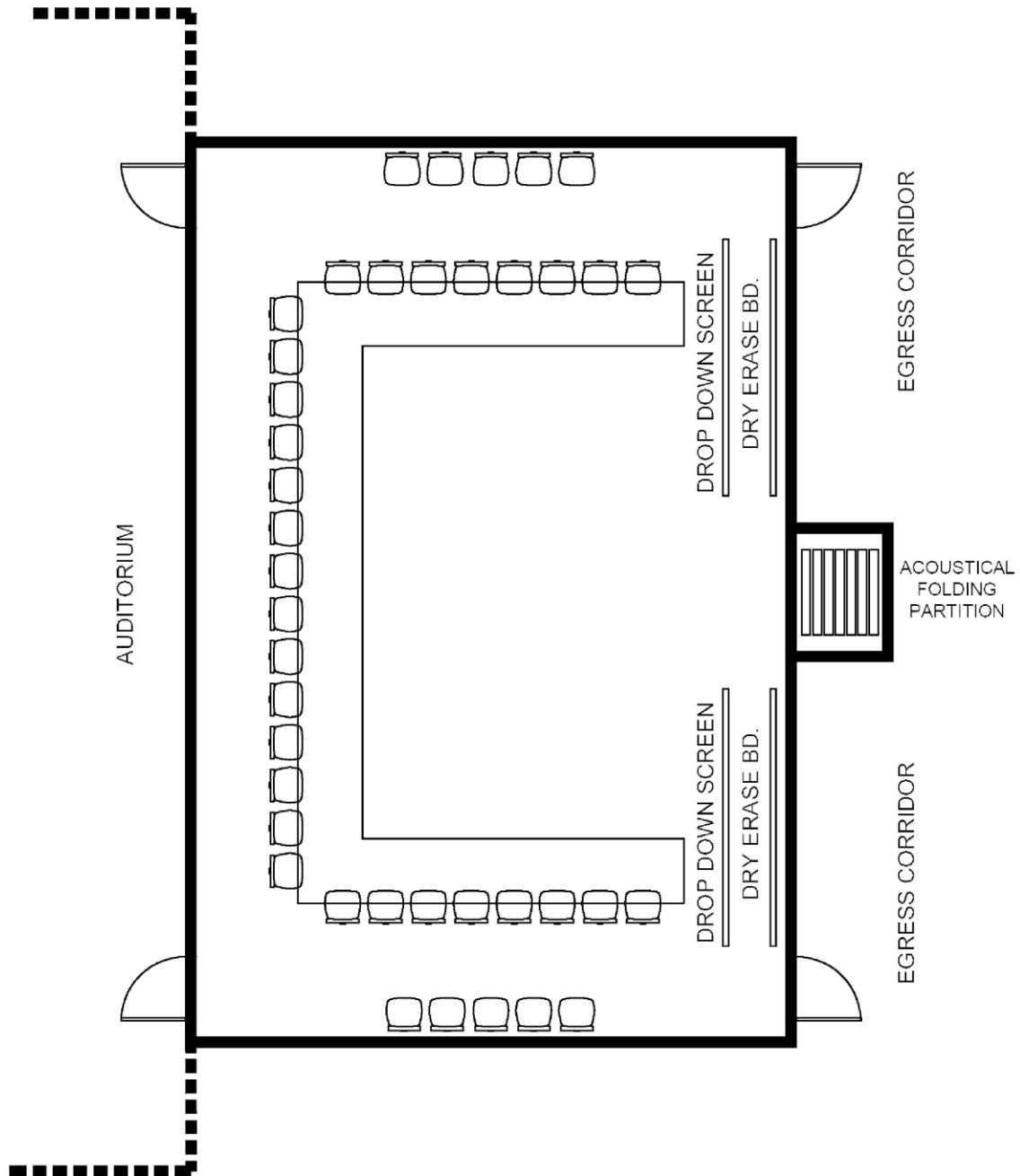


LOBBY

ITEMS

RECEPTION: 1,300 SQ. FT.
 20 SEATS
 1 COMPUTER
 RECEPTION DESK: 8 LINEAR FT.
 FIREPLACE
 2 AWARD CASES: 8 FT. EACH
 1 CABINET: 8 FT.
 USB CHARGING STATIONS

KCSARA BOARDROOM



BOARD ROOM - USE 2 CLASSROOMS

ITEMS

BOARD ROOM: 1,176 SQ. FT.

TABLE: 59 FT. X 3 FT.

30 SEATS - ADD'TNL 10

2 DROP DOWN SCREEN: 8 FT.

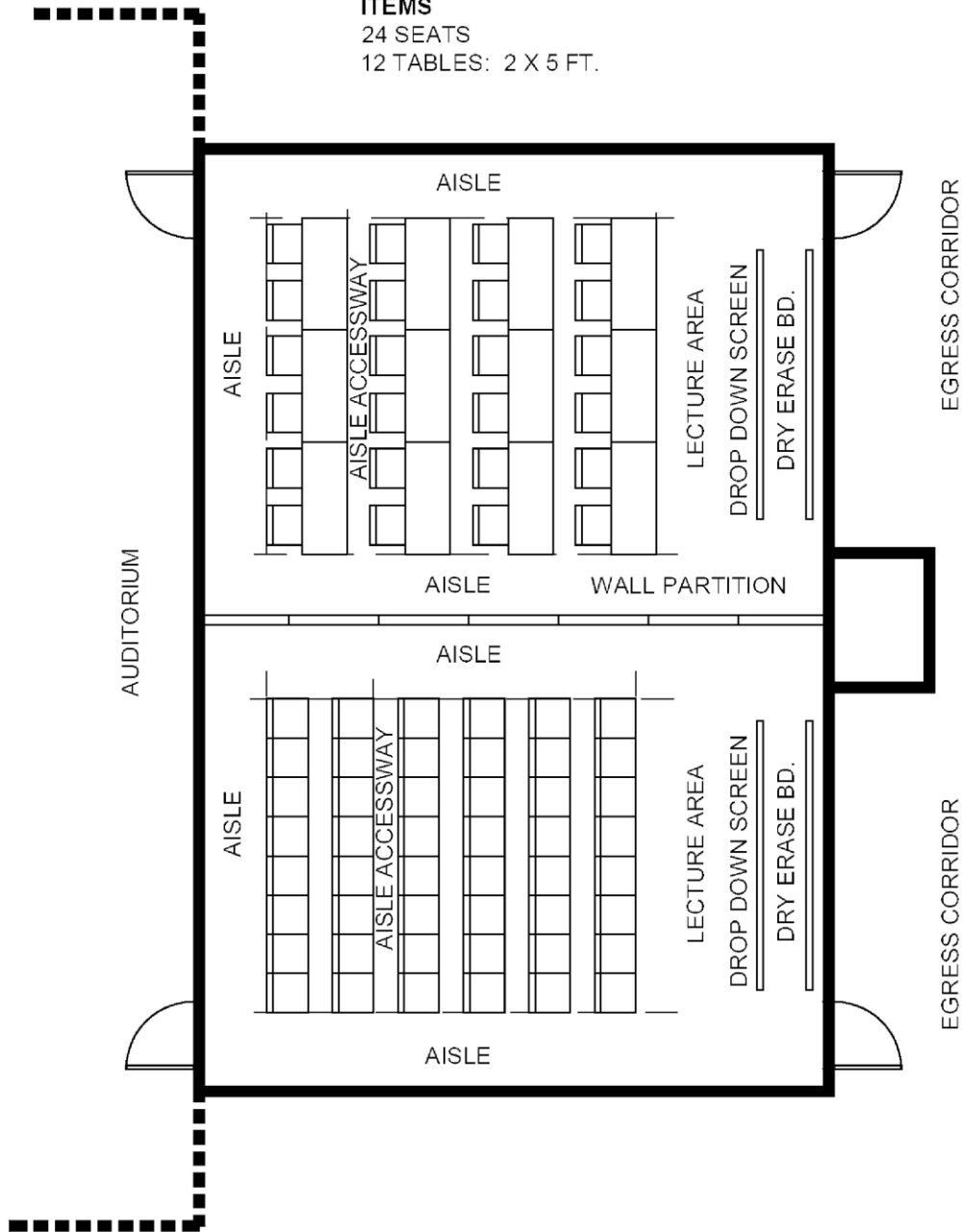
2 DRY ERASE BOARD: 12 FT.

CLASSROOMS

CLASSROOM - TABLES

ITEMS

24 SEATS
12 TABLES: 2 X 5 FT.



CLASSROOM - CHAIRS

ITEMS

4 CLASSROOMS: 588 SQ. FT. EACH
48 SEATS

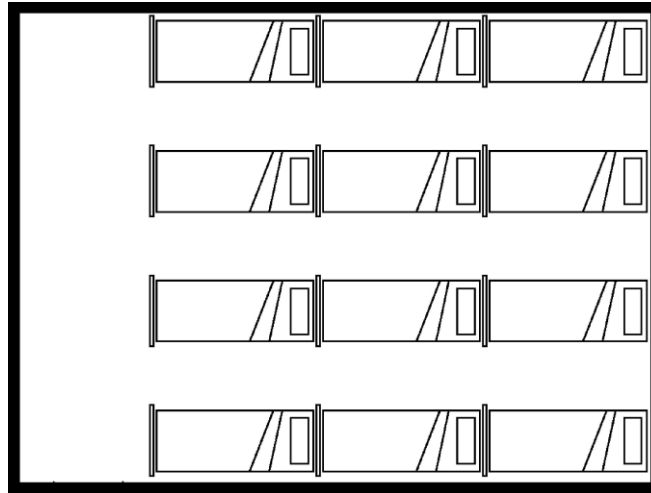
REQUIRED ROOM ADJACENCIES

AUDITORIUM (2 CLASS ROOMS)

CODE REQUIREMENTS

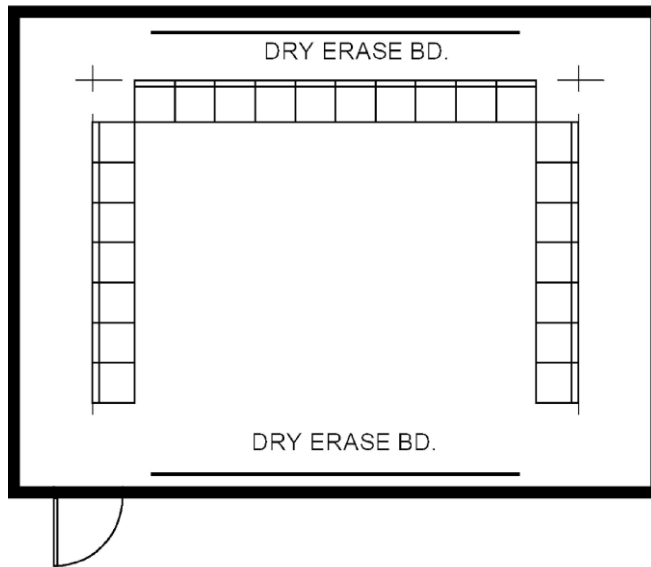
OCCUPANCY: EDUCATION
1 EXIT REQUIRED TO EGRESS CORRIDOR
OCCUPANT LOAD: 30 (20 NET)
AISLE: 36" MIN.
AISLE ACCESSWAY: 12" MIN.

CLASSROOMS



CLASSROOM - BUNK ROOM

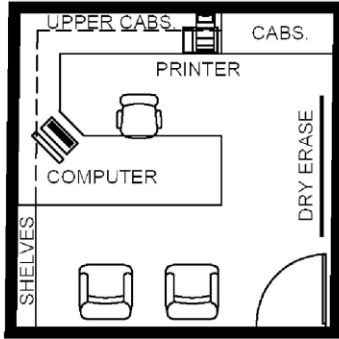
ITEMS
12 COTS



CLASSROOM - DEMONSTRATIONS

ITEMS
24 SEATS
2 DRY ERASE BOARDS - 16 FT.

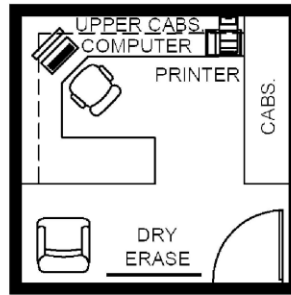
OFFICES & STORAGE



**EXECUTIVE OFFICE
PRESIDENT**

ITEMS

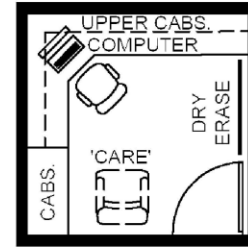
ROOM: 196 SQ. FT.
 WORK CHAIR
 2 SIDE CHAIRS
 DESK: 20 LINEAR FT.
 UPPER CABINETS: 16 L. FT.
 SHELVES BOOK / DISPLAY: 6 LF
 COMPUTER & PRINTER
 TELEPHONE / CELL
 FILE CABINET: 5 LINEAR FT.
 DRY ERASE BOARD: 6 FT.



**FACILITY MANAGER
FULL TIME**

ITEMS

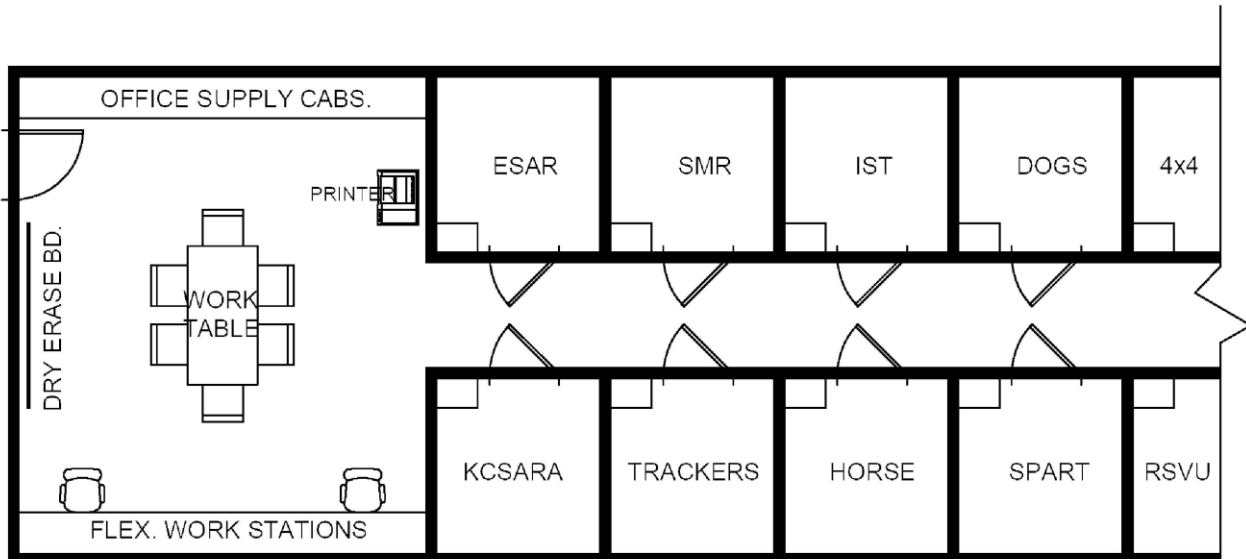
ROOM: 144 SQ. FT.
 WORK CHAIR
 1 SIDE CHAIR
 COMPUTER & PRINTER
 TELEPHONE / CELL
 CORNER DESK: 18 LINEAR FT.
 UPPER CABINETS: 17 LINEAR FT.
 FILE CABINET: 7 LINEAR FT.
 DRY ERASE BOARD: 4 FT.



SHARED USE OFFICE (2)

ITEMS

ROOM: 100 SQ. FT.
 WORK CHAIR
 1 SIDE CHAIR 'CARE' ROOM
 COMPUTER
 CORNER DESK: 14 LF
 UPPER CABINETS: 15 LF
 FILE CABINET: 4 LINEAR FT.
 DRY ERASE BOARD: 4 FT.
 TELECONFERENCE



UNIT WORKSPACES, OFFICE SUPPLY, MEETING

ITEMS

ROOM: 380 SQ. FT.
 WORK TABLE: 6 FT. X 3 FT.
 CABINET: 18 LINEAR FT.
 LAZER PRINTER / COPIER
 FLEXIBLE WORK STATIONS 2 - 3
 LAPTOP POWER / DATA CONNECTIONS
 1 DRY ERASE BOARD 8 FT.

UNIT CLOSETS - SECURE STORAGE

ITEMS

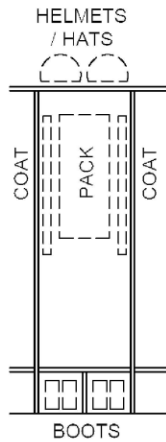
STORAGE AREA: 840 SQ. FT.
 EACH CLOSET: 64 SQ. FT. (8 FT X 8 FT)
 1 LOCKABLE FILE CABINET EACH
 CABS & SHELVES
 LOCKABLE DOORS

MUD ROOM & LAUNDRY

LAUNDRY

ITEMS

ROOM: 165 SQ. FT.
 WASHER & DRYER - STANDARD COMMERCIAL
 1 LAUNDRY SINK
 MOP SINK: 3 FT. X 3 FT.
 COUNTERS: 14 LINEAR FT.
 UPPER CABINETS: 21 LINEAR FT.
 FULL HEIGHT CABS.: 11 LINEAR FT.
 JANITOR STORAGE: 6 FT.



STORAGE BAY ELEVATION

ITEMS

1 70 LITER BACKPACKS
 2 COAT HANGERS
 2 BOOT CUBBIES
 2 HELMENT / HATS



MUD ROOM

ITEMS

ROOM: 256 SQ. FT.
 8 STORAGE BAYS: 2 FT. X 2 FT.
 EACH BAY: 2 PACKS/COATS/BOOTS
 1 BENCH: 8 FT. X 1.5 FT.
 TEMPORARY STORAGE: 20 LINEAR FT.
 GENERAL EQUIPMENT HANGERS

RESTROOMS

RESTROOMS - OUTBUILDING

ITEMS

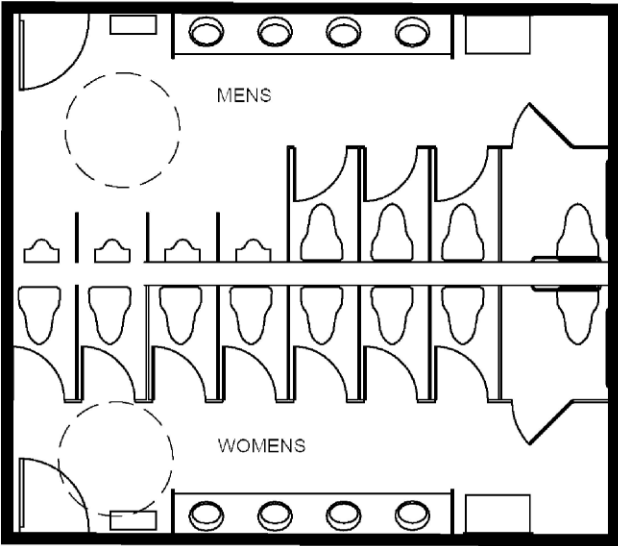
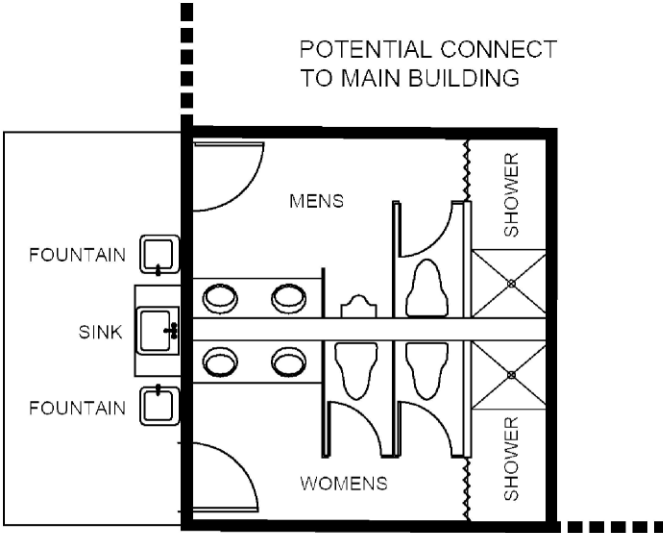
RESTROOMS: 270 SQ. FT.

MENS:

- 2 SINKS
- 1 URINAL
- 1 WATER CLOSET
- 1 SHOWER

WOMENS:

- 2 SINKS
- 2 WATER CLOSETS
- 1 SHOWER



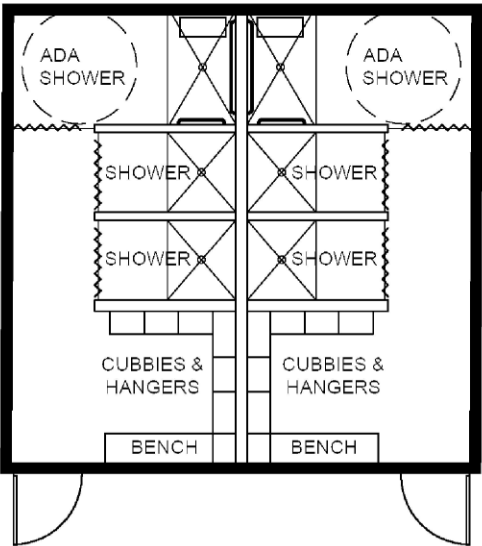
RESTROOMS - HEADQUARTERS

ITEMS

RESTROOMS: 614 SQ. FT.

CODE REQUIREMENTS

- BASED ON SQ. FT. OF PROGRAM SPACES:
- ASSEMBLY SPACES: 625 O.L.
- BUSINESS SPACES: 150 O.L.
- WATER CLOSETS: M - 6, W - 8
- LAVATORIES: M - 4, W - 4



LOCKER ROOM - HEADQUARTERS

ITEMS

- WOMENS: 205 SQ. FT.
- MENS: 205 SQ. FT.
- 6 MEN'S CUBBIES: 18" W X 12" D
- 6 WOMEN'S CUBBIES: 18" W X 12" D
- 3 WOMEN'S SHOWERS
- 3 MEN'S SHOWERS

GEAR & VEHICLE CLEANING

OUTDOOR GEAR CLEANING

ITEMS

- CLEANING: 690 SQ. FT. DRYING: 275 SQ. FT.
- 1 WORK TABLE: 6 FT. X 10FT.
- 3 BENCHES: 13 FT. X 1.5 FT.
- 2 DRINKING FOUNTAINS
- 4 COMPARTMENT STAINLESS STEEL SINK
- 1 UNISEX RESTROOM 64 SQ. FT.
- 1 LAUNDRY ROOM 64 SQ. FT.
- 1 DOG WASH: 3 FT. X 5 FT.

UNIT STORAGE

ITEMS

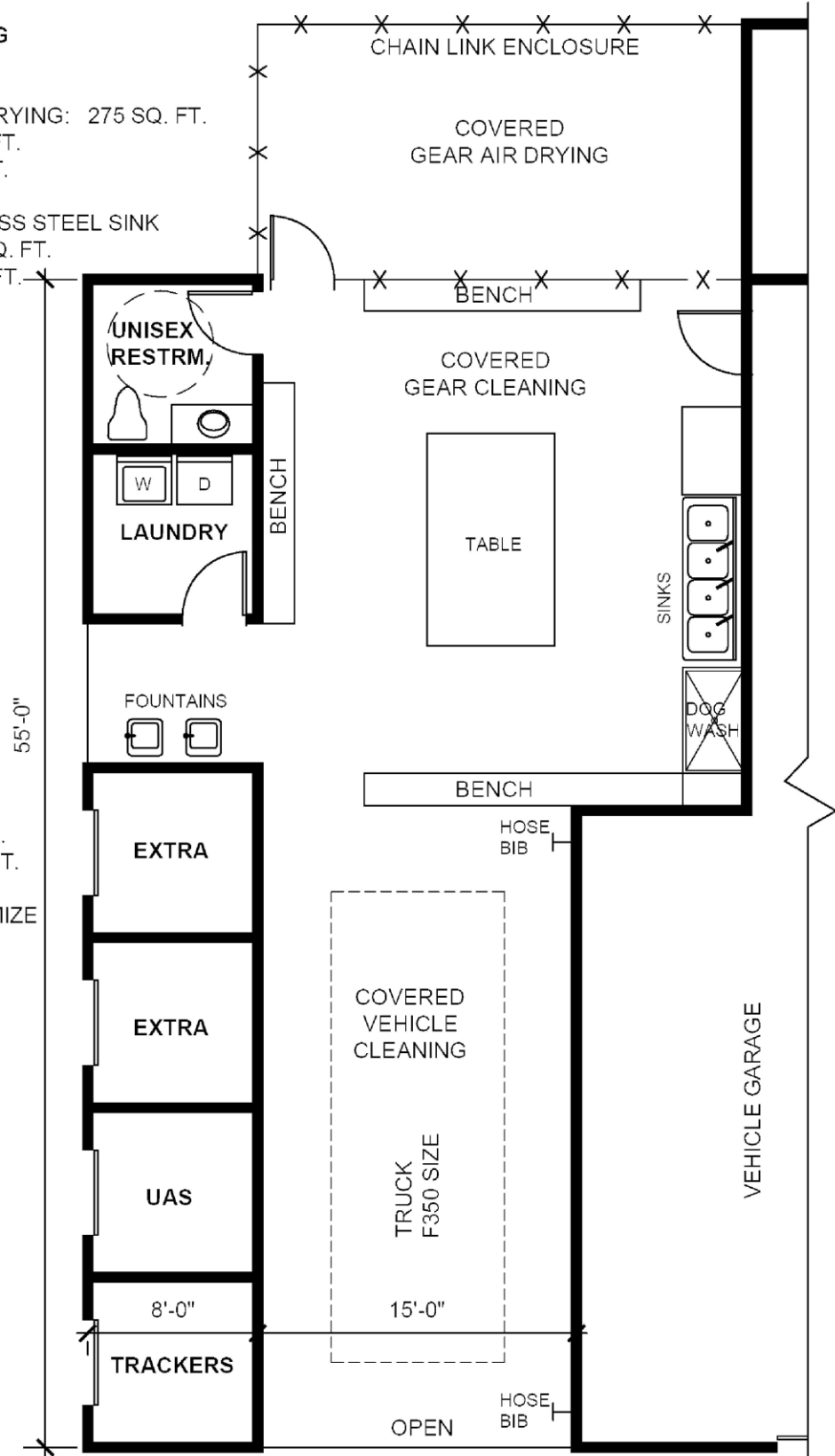
- EACH STORAGE: 64 SQ. FT.
- GARAGE DOOR: 4 FT. X 8 FT.
- SHELVES & LOCKED STORAGE: UNIT'S CUSTOMIZE HEATED

LOAD & UNLOAD AREA

VEHICLE CLEANING

ITEMS

- AREA: 450 SQ. FT.
- 2 HOSE BIBS

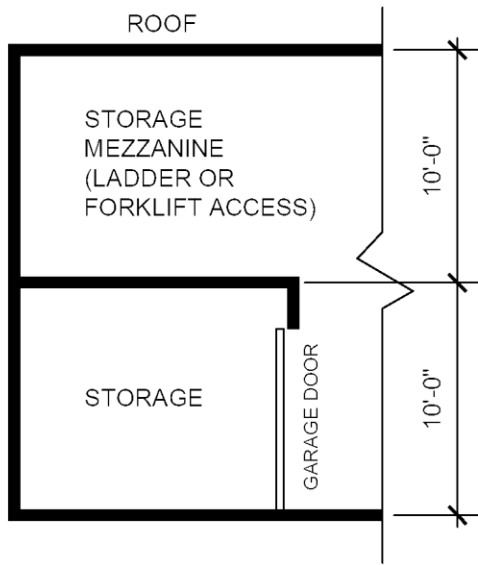


KCSARA VEHICLE BAY

TYPICAL LARGE STORAGE

ITEMS

STORAGE: 180 SQ. FT. (12 FT. X 15 FT.)
 GARAGE DOOR: 8 FT. X 8 FT. LOCK
 SHELVES & LOCKED STOR:
 UNITS CUSTOMIZE
 HEIGHT: 10 FT.
 STORAGE MEZZANINE ABOVE
 CONDITIONED

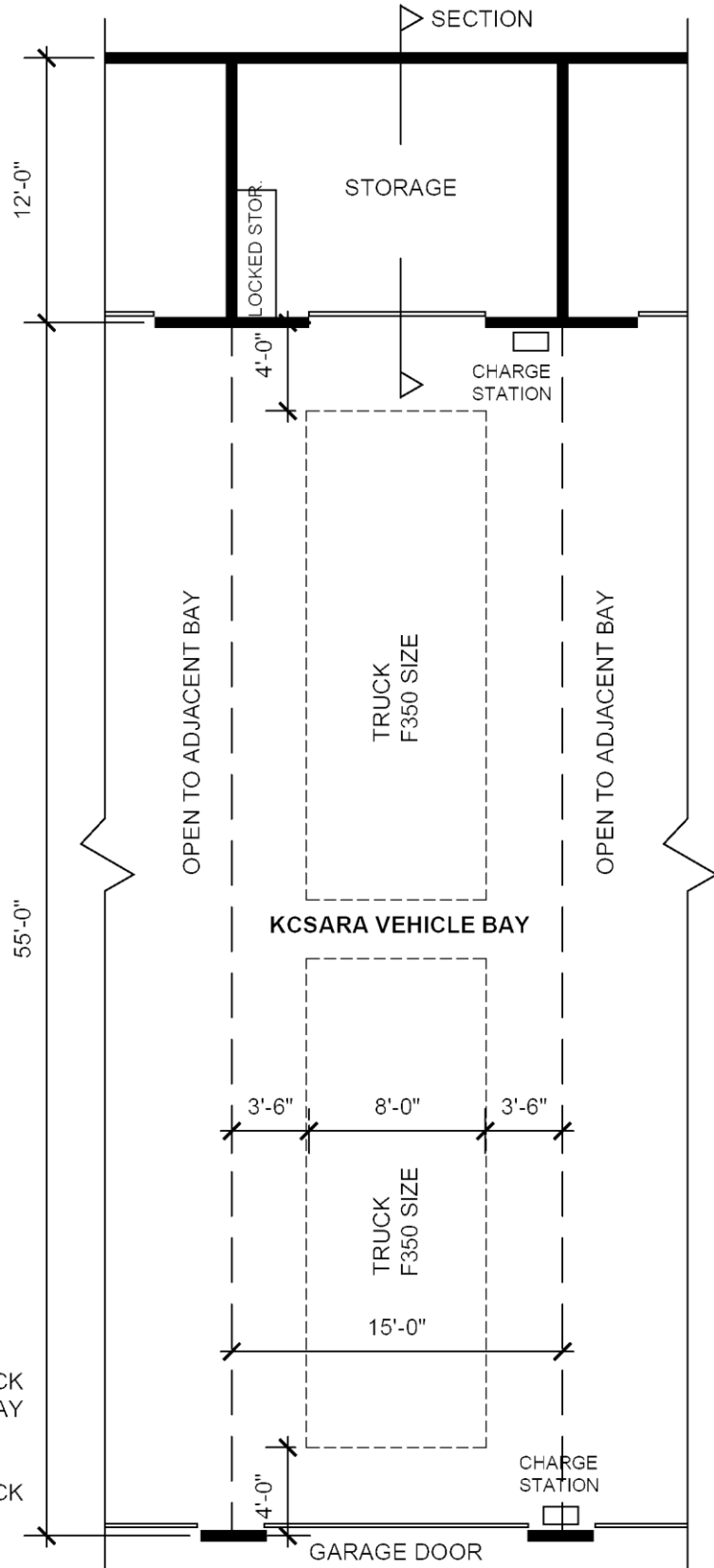


STORAGE SECTION

TYPICAL VEHICLE BAY

ITEMS

BAY: 825 SQ. FT. (15 FT. X 50 FT.)
 GARAGE DOOR: 12 FT. W X 14 FT. H LOCK
 UNIT STORAGE: END OF EACH UNIT'S BAY
 HEIGHT: 18 FT. (16 FT. MIN. CLEAR)
 CONDITIONED
 CHARGING STATIONS: BAY FRONT & BACK
 CHARGING DROPS MID BAY



ESAR VEHICLE BAYS

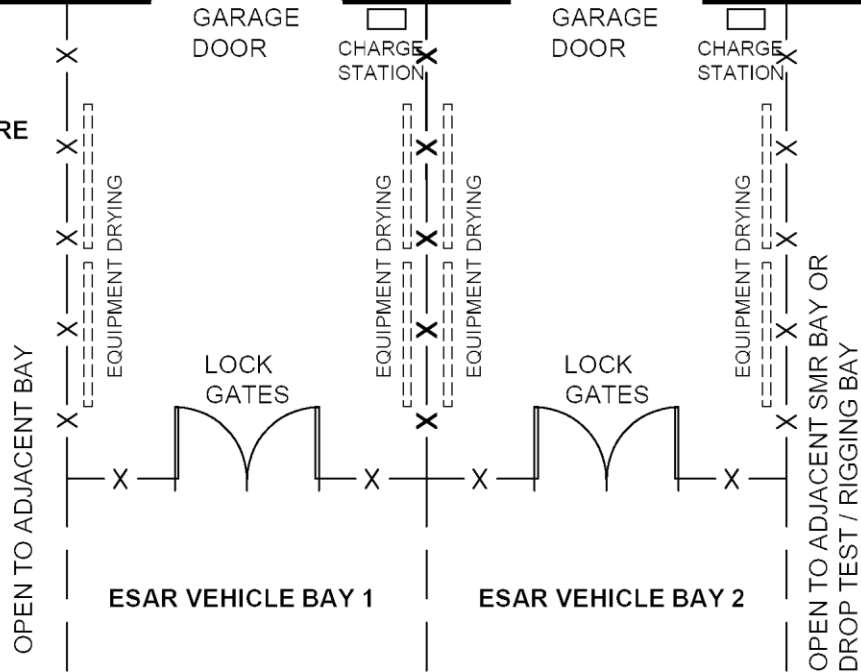
TYPICAL LARGE STORAGE

ITEMS
SEE KCSARA BAY SHEET



TYPICAL DRYING ENCLOSURE

ITEMS
FULL HEIGHT FENCING
LOCKABLE GATES
HANG SPACE 20 LINEAR FT.

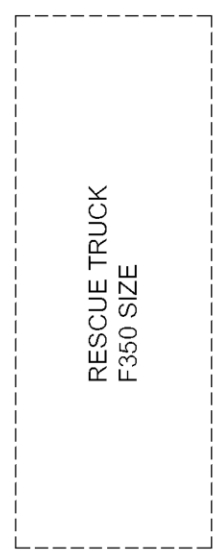


OPEN TO ADJACENT BAY

OPEN TO ADJACENT SMR BAY OR
DROP TEST / RIGGING BAY

ESAR VEHICLE BAY 1

ESAR VEHICLE BAY 2



TYPICAL VEHICLE BAY

ITEMS
SEE KCSARA BAY SHEET



4X4 VEHICLE BAYS

TYPICAL LARGE STORAGE

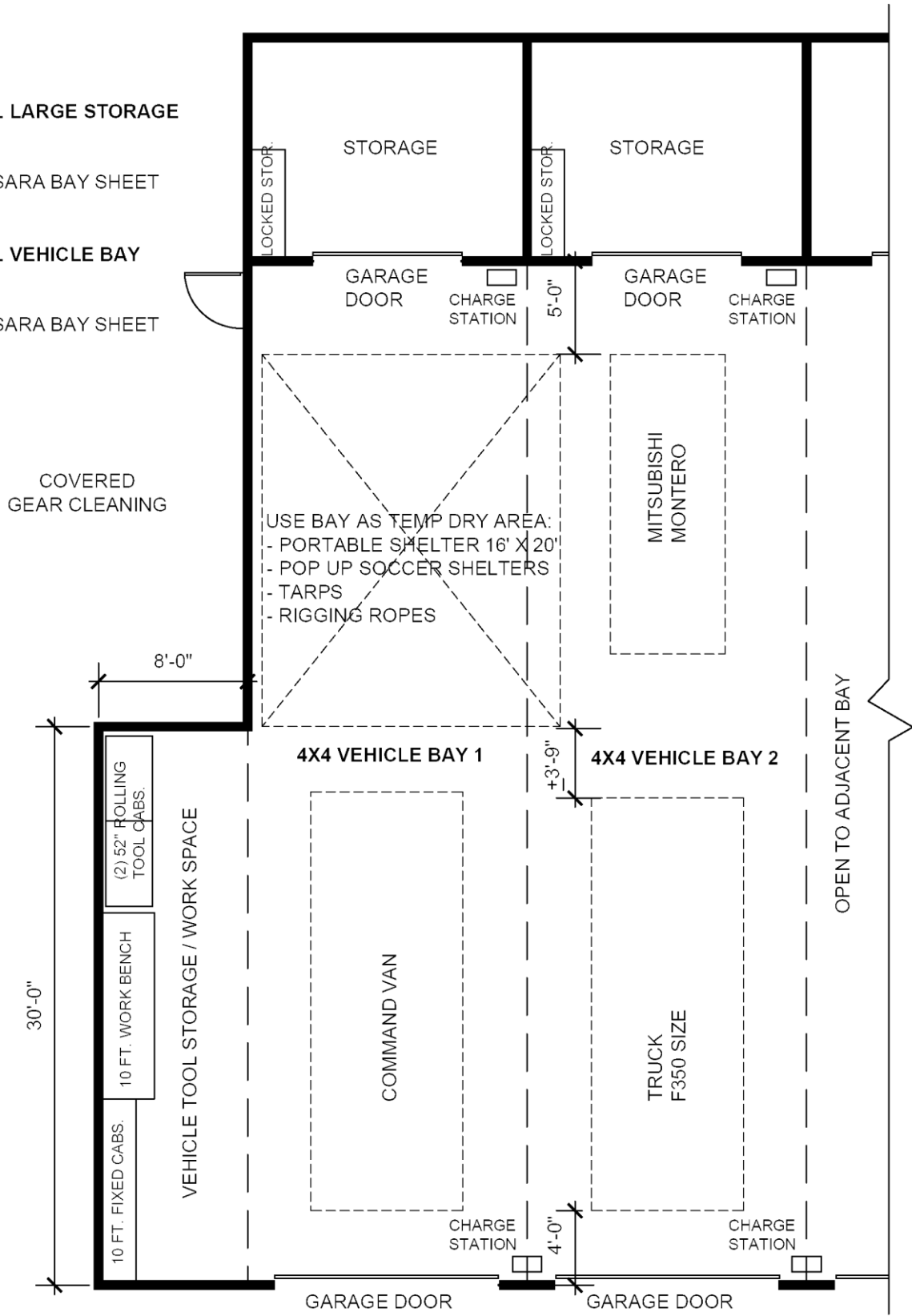
ITEMS

SEE KCSARA BAY SHEET

TYPICAL VEHICLE BAY

ITEMS

SEE KCSARA BAY SHEET



SMR VEHICLE BAYS

TYPICAL LARGE STORAGE

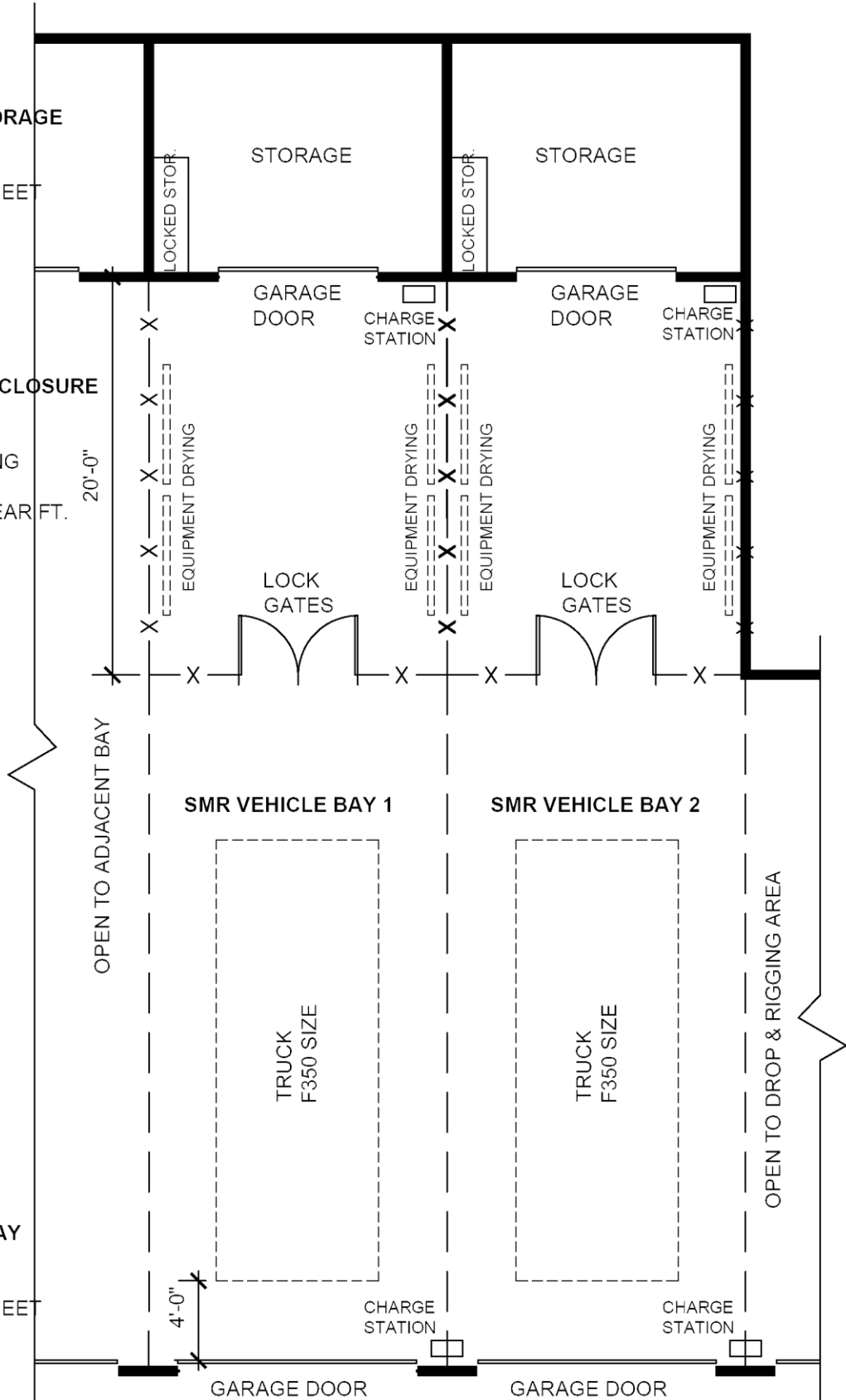
ITEMS
SEE KCSARA BAY SHEET

TYPICAL DRYING ENCLOSURE

ITEMS
FULL HEIGHT FENCING
LOCKABLE GATES
HANG SPACE 20 LINEAR FT.

TYPICAL VEHICLE BAY

ITEMS
SEE KCSARA BAY SHEET

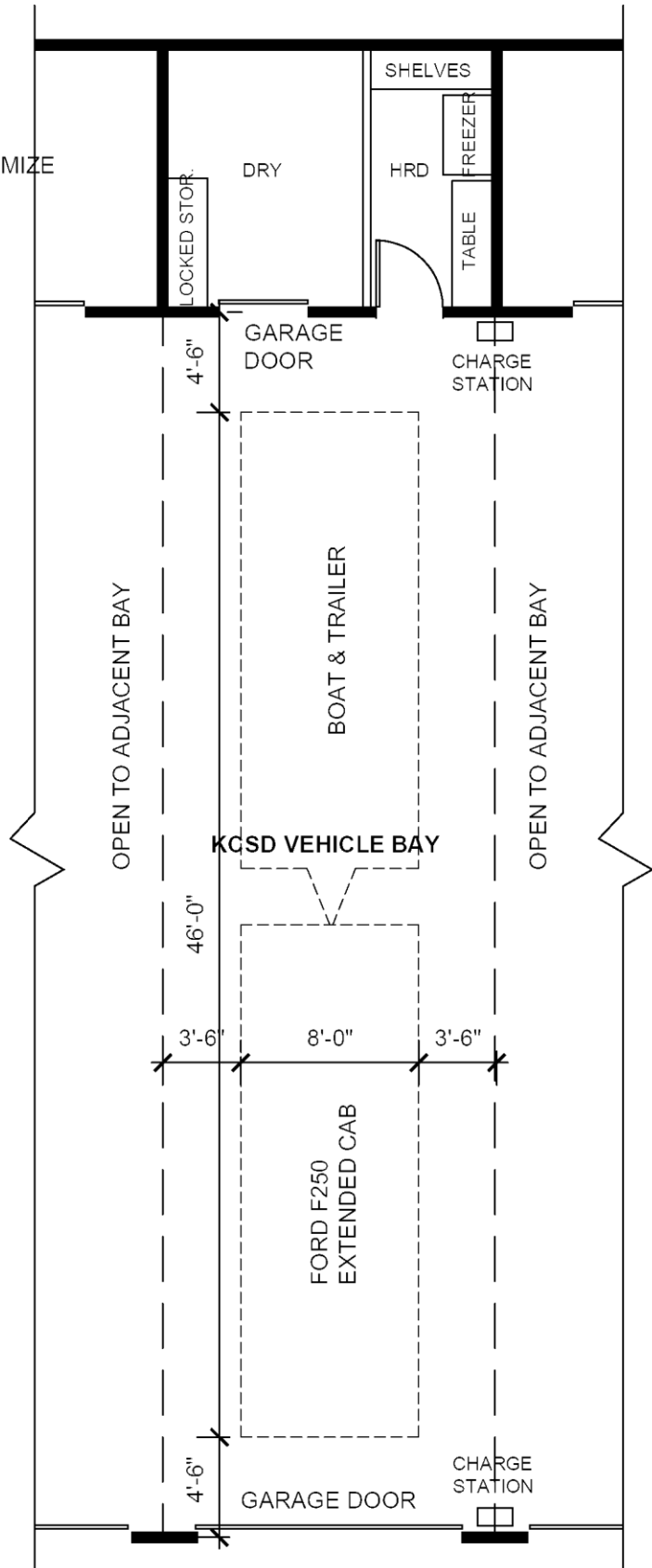


KCSD VEHICLE BAY

KCSD DOGS STORAGE

ITEMS

DRY STORAGE: 110 SQ. FT.
 SHELVES & LOCKED STORAGE: UNIT'S CUSTOMIZE
 GARAGE DOOR: 4 FT. X 8 FT.
 HRD STORAGE: 70 SQ. FT.
 MEAT FREEZER CHEST: 4 FT. X 2.5 FT. (9 C.F.)
 SHELVES: 6 LINEAR FT.
 WORK TABLE: 6 FT. X 2 FT.



TYPICAL VEHICLE BAY

ITEMS

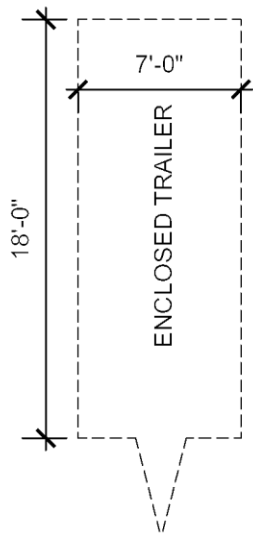
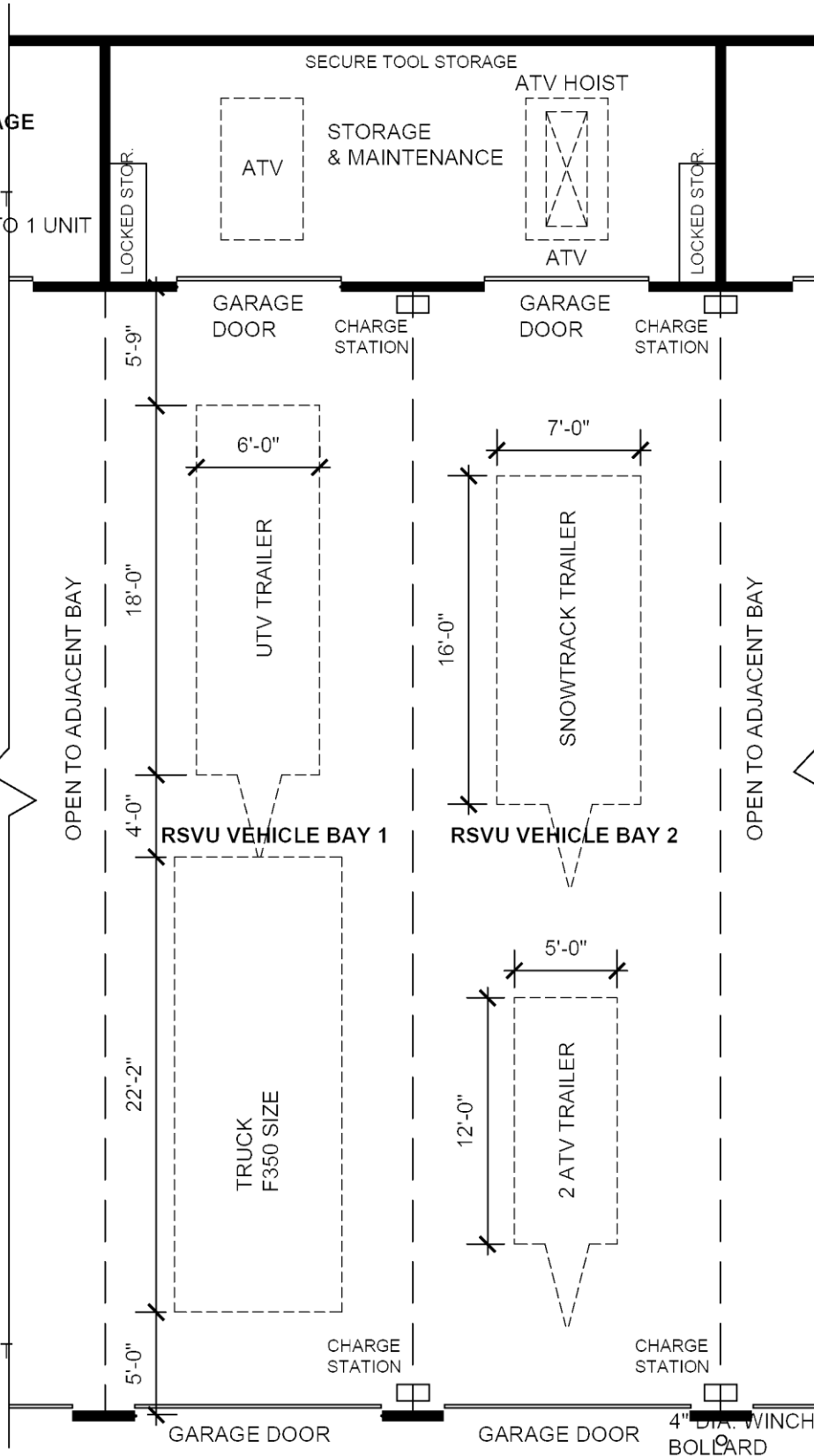
SEE KCSARA BAY SHEET

RSVU VEHICLE BAYS

TYPICAL LARGE STORAGE

ITEMS

SEE KCSARA BAY SHEET
COMBINE STORAGE INTO 1 UNIT



ENCLOSED TRAILER
STORE IN COVERED
OUTDOOR SPACE

TYPICAL VEHICLE BAY

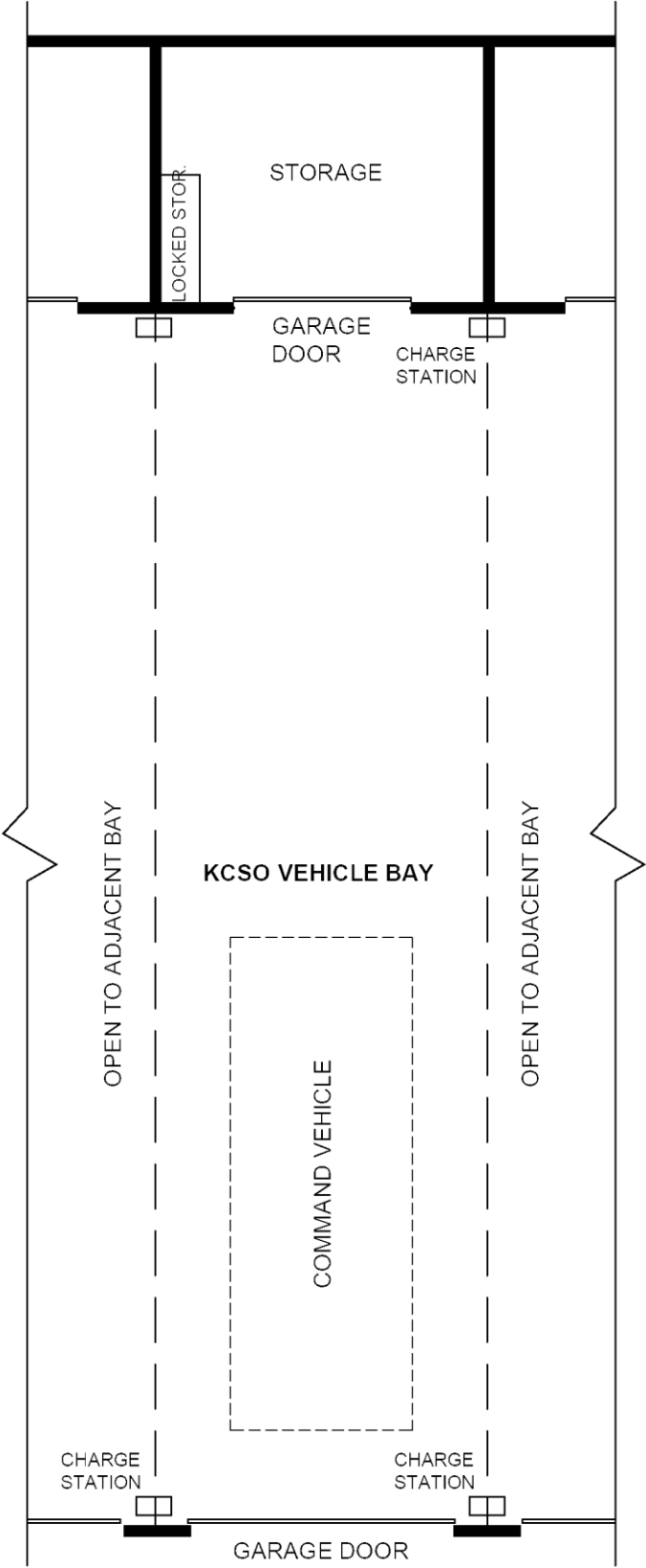
ITEMS

SEE KCSARA BAY SHEET

KC SHERIFF VEHICLE BAY

TYPICAL LARGE STORAGE

ITEMS
SEE KCSARA BAY SHEET



TYPICAL VEHICLE BAY

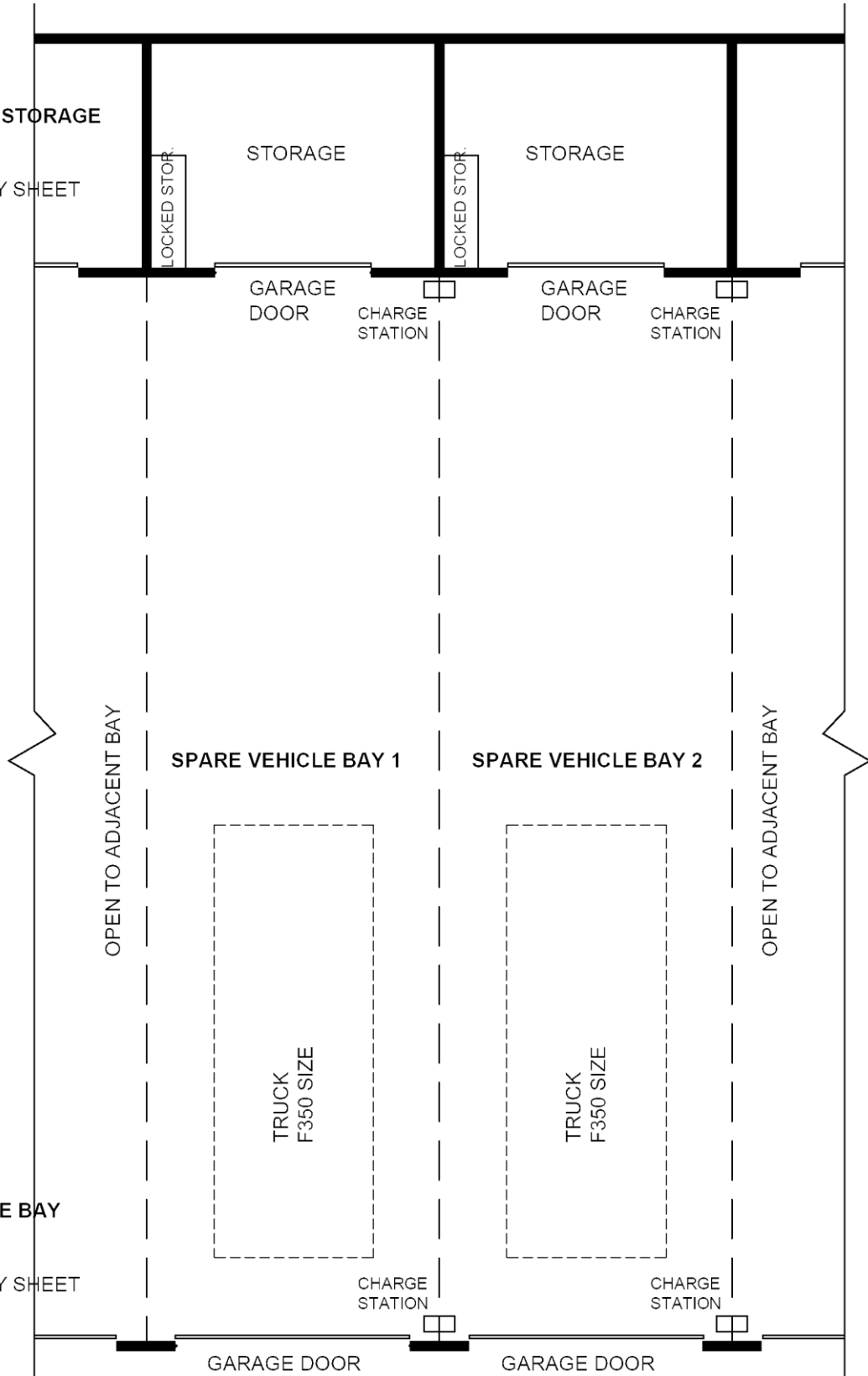
ITEMS
SEE KCSARA BAY SHEET



SPARE VEHICLE BAYS

TYPICAL LARGE STORAGE

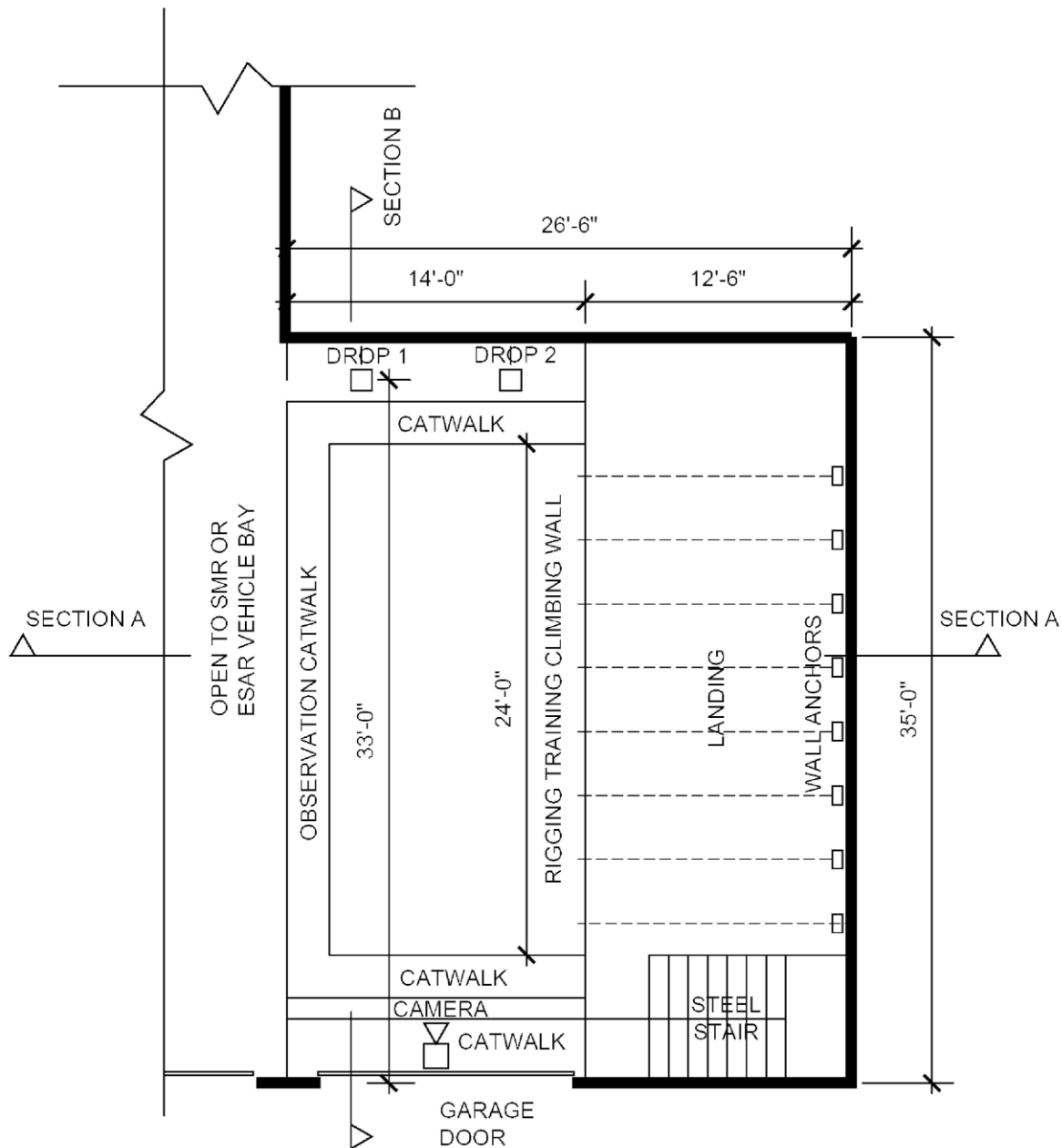
ITEMS
SEE KCSARA BAY SHEET



TYPICAL VEHICLE BAY

ITEMS
SEE KCSARA BAY SHEET

DROP TEST & RIGGING TRAINING

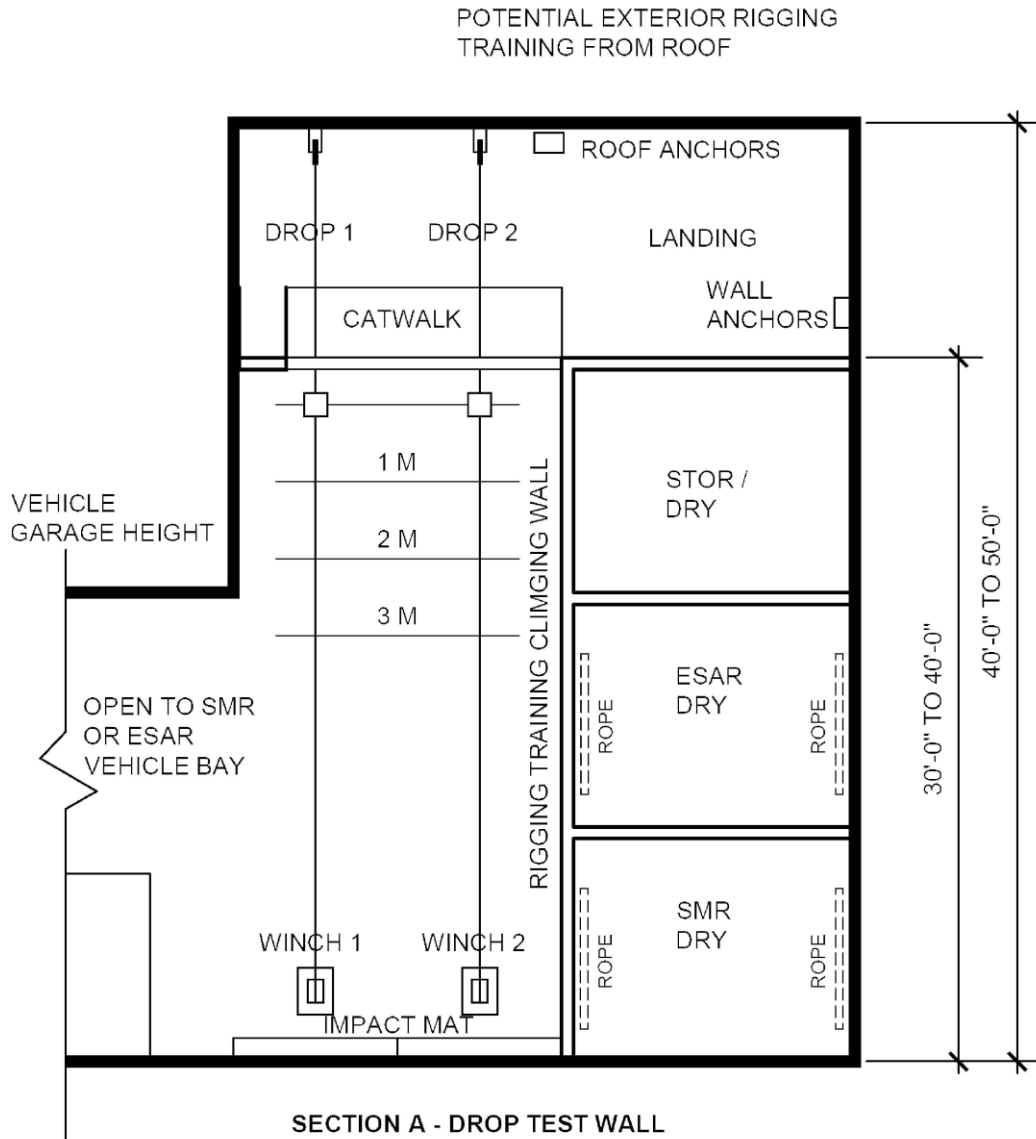


DROP TESTING & RIGGING TRAINING PLAN

ITEMS

- PLAN AREA: 930 SQ. FT.
- ROPE DRY AREA: 360 SQ. FT. EACH LEVEL
- ROPE DRY WALL AREA: 600 SQ. FT. EACH LEVEL
- STEEL CATWALKS & STAIR
- DROP TEST CAMERA
- RIGGING TRAINING CLIMBING WALL
- 2 DROP TEST STATIONS
- 2 POWER WINCHES OR 1 POWER MOVABLE WINCH
- MOVABLE IMPACT MATS UNDER DROP TESTING

DROP TEST & RIGGING SECTION A

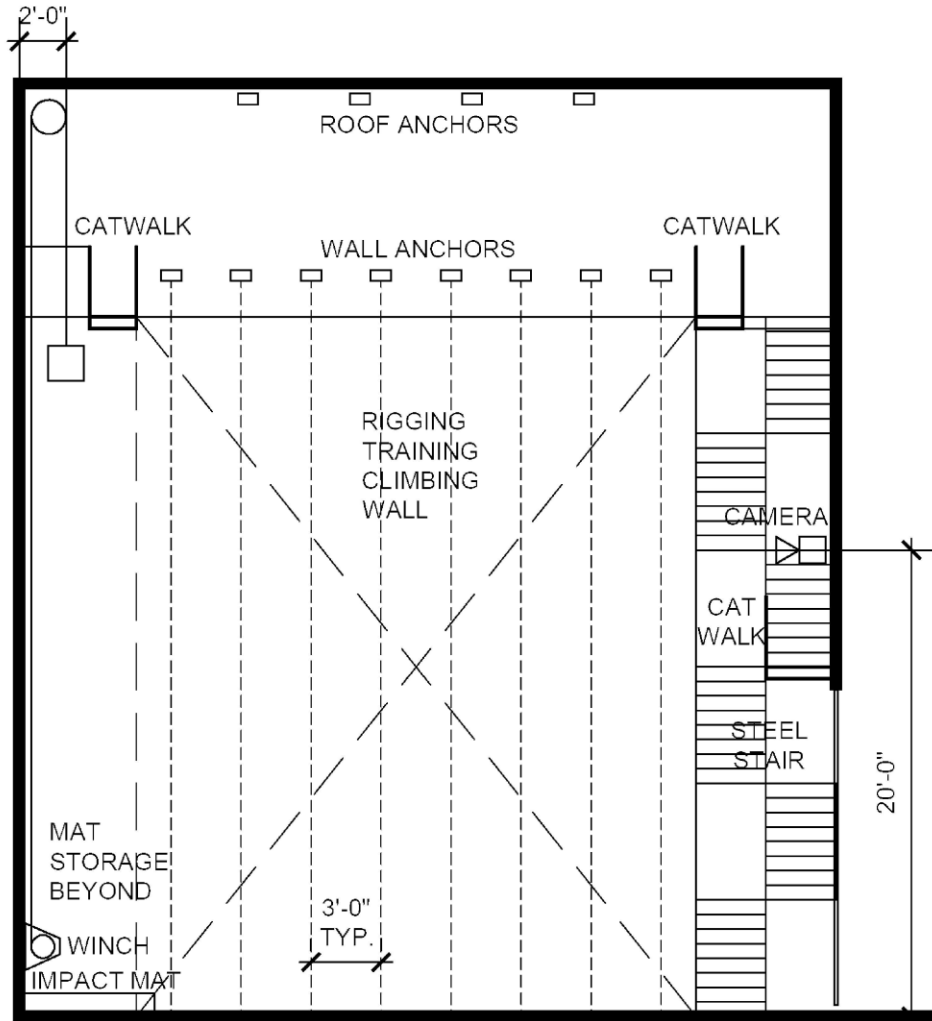


DROP TESTING & RIGGING TRAINING

ITEMS

SEE PLAN VIEW SHEET

DROP TEST & RIGGING SECTION B



SECTION B - RIGGING TRAINING WALL

DROP TESTING & RIGGING TRAINING

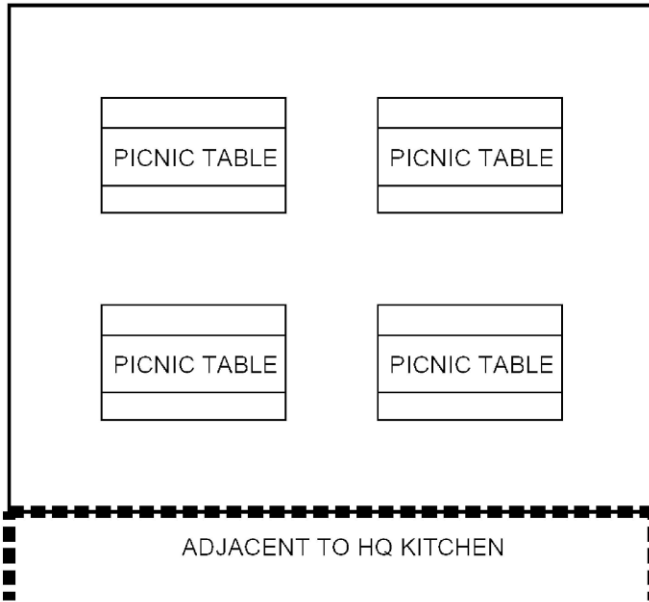
ITEMS

SEE PLAN VIEW SHEET

8 WALL ANCHORS

4 ROOF ANCHORS

COVERED OUTDOOR TRAINING



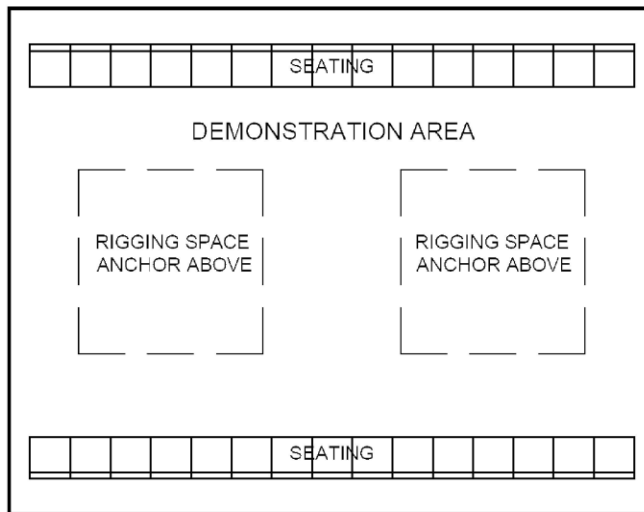
COVERED OUTDOOR EATING

ITEMS

AREA: 616 SQ. FT.

4 PICNIC TABLES: 8 FT. LONG

SEATING: 32 PEOPLE



COVERED OUTDOOR TRAINING

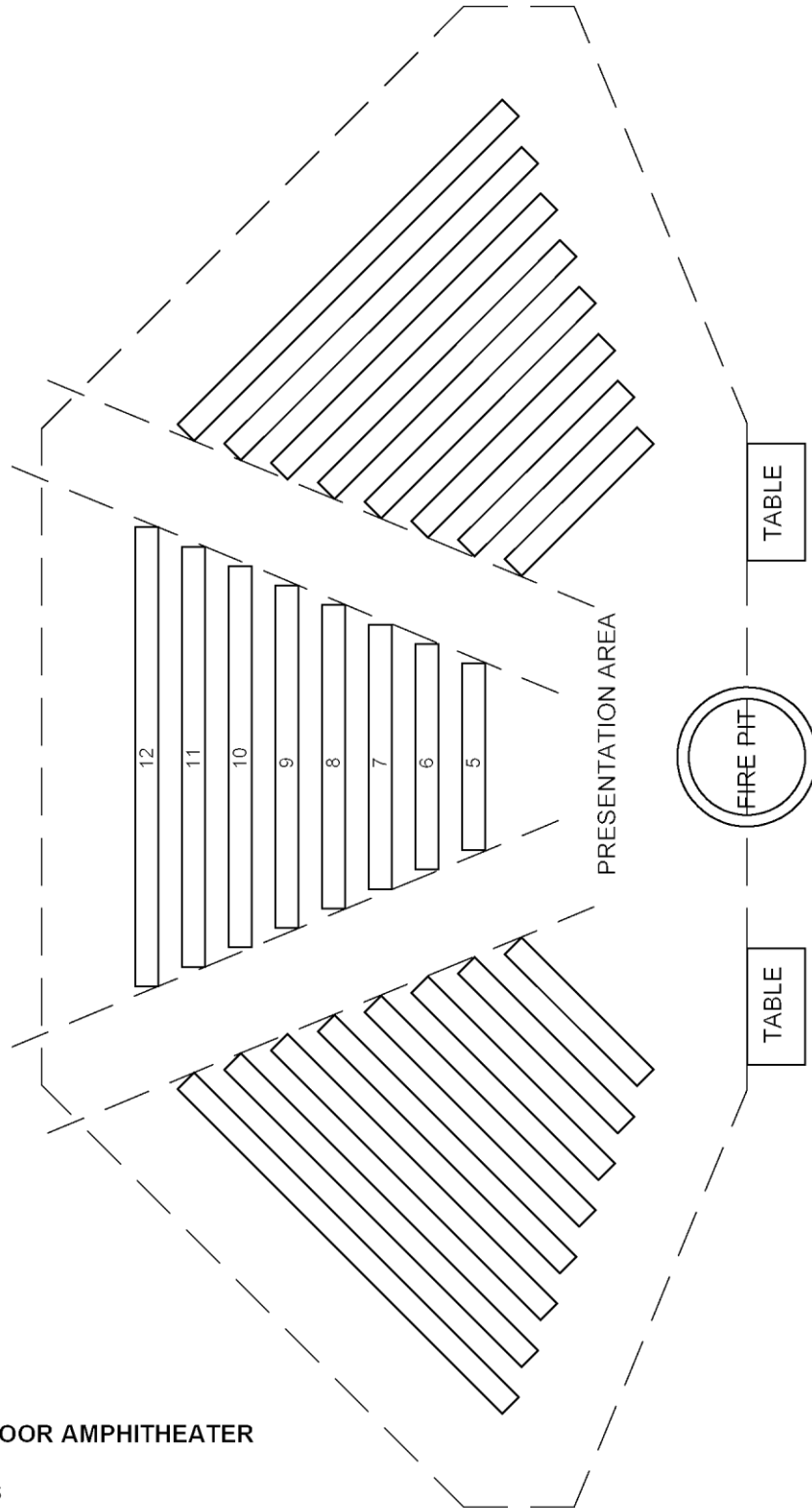
ITEMS

AREA: 616 SQ. FT.

30 SEATS: 25 - 35 PEOPLE

20 FT. TALL ROOF PEAK

RIGGING TRAINING 1 - 2 PEOPLE, 2 ANCHORS



OUTDOOR AMPHITHEATER

ITEMS

AMPHITHEATER: 1,480 SQ. FT.

BENCH SEATS: 204 PEOPLE

PRESENTATION AREA

FIRE PIT

2 TABLES: 2.5 FT. X 5 FT.

LIGHTING / POWER

MEETING NOTES - ESAR

Unit representative: Valon Miller

Purpose: Discuss Unit specific program elements

Date: 6/4/2020

Meeting Notes:

1. Outdoor covered training: (Most training occurs in the field)
 - a. Initial gathering space or after training debrief for 25-35 people
 - b. Flat ground training
 - c. 20' tall at peak & rigging anchors in roof structure for 1-2 people ascending, hauling up others
2. Amphitheater (similar to typical boy scout gathering spaces with fire pit):
 - a. Wood benches for up to 200 people
 - b. Stage – flat, gravel area with fire pit & table
 - c. No need for permanent cover over stage, maybe temporary for certain events
 - d. Larger classes held also during winter
3. River training (river rescue not currently part of SAR activities):
 - a. Training to occur on natural river banks – no cleared areas, no trails in
 - b. Mostly rigging training
4. Restroom facilities
 - a. Large training events (mostly occur in the field): 30-40 trainees, 10-20 staff members
 - b. Restroom facilities required – 2 stalls, 1 shower each restroom
 - c. Prefer connected to main building
 - d. Maybe consolidate Outbuilding & Main building restrooms
 - e. Adjacent to gear cleaning, mud room, & laundry room
5. Mud room:
 - a. Not strictly a pack room – maybe 6-8 pack hanging bays; should accommodate 6-8 people
 - b. Mostly for Unit equipment that remains at Headquarters – litter, ropes, etc. to dry – temporary storage
 - c. Adjacent to Laundry room (mop sink, utility sink, washer/dryer), restrooms, gear cleaning
6. Gear cleaning covered outdoor space:
 - a. Flat, gravel area
 - b. Counter space & (4) compartment stainless steel sink
 - c. Clean ropes, webbing, packaging materials – equipment that stays at Head quarters
7. Unit workspaces:
 - a. Maybe room becomes multi-purpose – 2 work desks, secure file cabinet storage, and other uses as needed.
8. Vehicle bays:
 - a. ESAR does not currently have trailers – will not fully use 50 bay depth
 - b. Does not want to stack vehicles; each in its own bay
 - c. If fixed storage isn't feasible then mobile storage cabinets
 - d. Prefer all Unit's bays open to each for multi-use option of the space
 - i. Rigging training with anchor points into structure
 - ii. Potential as a large auditorium space for events
9. Secure storage – administrative purposes:

MEETING NOTES - ESAR

Unit representative: Valon Miller

Purpose: Discuss Unit specific program elements

Date: 6/4/2020

Meeting Notes Continued:

10. Secure storage – Unit equipment:
 - a. End of Vehicle bay good idea
 - b. Plan diagram square footage is adequate
 - c. No shelves – need more customizable for unique equipment sizes
 - d. No rope drying in this area
11. Levels of security:
 - a. General membership – no access to vehicle bays / Unit storage
 - b. Van drivers & Training staff – access to vehicle bays / Unit storage
 - c. Senior leadership & equipment manager – access to all above including locked cabinets in the Unit storage for expensive & supplemental equipment
12. Drop testing & rigging training:
 - a. End of vehicle garage good
 - b. 5000 lb point load at anchors
 - c. 450 lb. load
 - d. Power winch to lift loads
 - e. Additional training location in auditorium, similar to Mountaineers facility in Seattle

MEETING NOTES - 4X4

Unit representative: Scott Corning

Purpose: Discuss Unit specific program elements

Date: 6/20/2020

Meeting Notes:

1. Driving course & winch / tow training area (2 – 3 events per year)
 - a. Need controlled environment
 - b. Probably done on forest service road or parking lot, i.e. remote from HQ site
 - c. GAR – Green, Amber, Red safety evaluations
 - d. Training in snow also necessary
2. Unit responds to events that are 'stable', no need for immediate response
3. Helicopter ground training
 - a. Probably done in native forest areas off of forest service roads
 - i. Although would be nice to have at HQ
 - b. Setting up landing zones – create clear landing area
 - c. Unit also sets up & monitors clear perimeter during heli event
 - d. Typically 1 person is ground contact for helicopter pilot
 - e. Clear area – 90' x 90' up to 150' x 150'
 - f. Potential largest helicopter - Army Huey type
4. Vehicle Bays
 - a. (3) full sized vehicles: F350 crew cab, Command vehicle (small box van), Mitsubishi Montero (Montero can stack behind other vehicles)
 - b. (5) trailers: 2 cargo trailers, 3 future trailers
 - c. Unused vehicle bay area can be used as temporary drying area for:
 - i. Military grade portable shelter – 16 ft. x 20 ft.
 - ii. Pop up soccer shelters, Tarps, Rigging ropes
 - d. Secure equipment storage
 - i. Locked cabinets to house expensive equipment – VHF unit, radio cache, GPS unit
 - ii. Current storage requirements approximately 1 ½ storage space as shown 12' x 15'
 - e. Maintenance space
 - i. HQ maintenance involves minor repairs – communication equip., lighting, etc.
 - ii. Vehicle repairs done by certified shops (oil changes, tire rotation, repairs, etc.)
 - iii. Good sized work bench & rolling tool cabinets
5. Offices
 - a. Unit workspaces
 - i. one open multi-use space; a unit work & meeting space
 - ii. Most records are digital; maybe need 1 lockable file cabinet
 - iii. A couple of work desks with upper cabinets and lights
 - iv. Center meeting table / work table with power from floor outlets
 - v. Incorporate office supplies into this room
 - b. Dedicated offices – maybe these should be more multi use by units

MEETING NOTES - IST

Unit representative: Gabe Marcus

Purpose: Discuss Unit specific program elements

Date: 6/10/2020

Meeting Notes:

1. Radio & Satellite communications room
 - a. Training occurs within this room
 - b. Needs acoustic separation from other spaces due to noise generated
 - c. Typical station (propose 4):
 - i. Cubicle approximately 6 ft. x 6 ft.
 - ii. Desktop 2.5 ft. x 6 ft.
 - iii. (2) 24" computer monitors
 - iv. Keyboard & mouse
 - v. Radio headset attached to cubicle partition
 - vi. Pull out drawers below desktop 1.5 ft. wide
 - d. Radio grounding requirements high frequency, higher voltage power supply required
2. Radio tower
 - a. SAR discussion that radio equipment could be added to a privately owned cell tower on site
 - b. Approximately 100 ft. tall
 - c. Tower location – at an elevation that allows transmission over surrounding terrain
3. Emergency Operations Center
 - a. Training occurs within this room
 - b. King County EOC example (Jason Sharone contact)
 - i. Approximately 100 ft. x 100 ft. room
 - ii. 10 banquette tables with 4 desk stations each table (2 either side)
 - iii. 3 wall screens each 10 ft. wide, Large wall maps
 - iv. Each station - (2) 24" computer monitors, keyboard & mouse, open file storage
4. Unit workspace & storage
 - a. Likes idea of multi-use space with a couple of desks, meeting table & unit secure storage
 - b. A lockable closet is fine for Unit's needs

MEETING NOTES - KCSARA

Unit representative: Jeff Fischer

Purpose: Discuss Unit specific program elements

Date: 6/26/2020

Meeting Notes:

1. Drones: 4x8 trailer & 5'x5'/ 5'x10' storage climate controlled
2. CARE: will use classrooms or offices as available
3. Offices:
 - a. Anticipate hiring a full time facility manager so office will be dedicated to that individual
 - b. 2 flex use offices
 - c. KCSARA executive office dedicated – president
 - i. Secure storage / computer
4. Unit workspace is good idea – multi use
5. Mudroom:
 - a. Max 6-8 people store temporary items
 - b. Locate in a more secure area
 - c. Maybe it provides open access to some parts of building and locked from others
 - d. Standard commercial washer & dryer is fine; no extractor type
 - e. No dog washing here, instead in the gear cleaning area
6. Locker room:
 - a. Don't need lockers, instead shoe & bag cubbies as well as clothes hangers
 - b. 3 showers each room is good
7. Restroom outbuilding:
 - a. Does not have to be separate from main building
 - b. No access from this to inside main building
8. Gear cleaning area:
 - a. Covered but open air vehicle bay
 - b. Laundry room with 'extractor' type commercial washer and dryer
9. Vehicle bays:
 - a. 55 ft. long bay to accommodate longest truck / trailer in Dogs unit
 - b. Units with unused bay depth can install locked chain linked enclosure for drying equipment
 - c. Provide vehicle charging outlets at front & back of bays, also provide charging from ceiling at mid bay
 - d. KCSARA only needs 1 bay and will stack 2 vehicles
 - e. 2 spare bays
 - f. RSVU only 2 bays & store enclosed trailer outside under cover
 - g. Pull through bay is a challenge, likely not, but will test it based on site allowances
 - h. KCSO – likely 2 vehicles stacked
10. Outdoor covered areas – multipurpose uses
11. Main building generator space
 - a. 1 unit at 5'x7' with 5' of clearance all around
 - b. 400-600 amp 3 phase
 - c. 100-200 KW diesel

MEETING NOTES - KCSARA

Unit representative: Jeff Fischer

Purpose: Discuss Unit specific program elements

Date: 6/26/2020

Meeting Notes Continued:

12. Auditorium:

- a. Increase size over original Wish List – 55'x55'
- b. 2 60 seat classrooms adjacent
- c. A/V – just a storage closet, not open to the auditorium
- d. Medical storage accessible directly to auditorium – 12'x14'
- e. EOC: County indicated initially only 10-15 people would staff it
 - i. Need power in floor for multiuse
 - ii. 2 projection screens min.

13. Kitchen:

- a. Anticipate the need for a service / buffet style table in the auditorium
- b. Food storage – 48" refer & freezer
- c. Loading dock not raised, simply a parking stall to back in

14. Entry lobby maybe 1,000 – 1,500 sq. ft.

15. Sales area – just enough area to sell and display items, units will store merchandise in unit storage closets

16. Boardroom:

- a. Use 2 adjacent classrooms with a folding partition wall
- b. Dry erase board and pull down screen on same side of room
- c. Used once a month

17. Table & chair storage – to be a centralized, locked area serving the entire building

MEETING NOTES - KCSD

Unit representative: Kristen Elliott

Purpose: Discuss Unit specific program elements

Date: 6/3/2020

Meeting Notes:

1. Existing storage 10' x 10' (100 sf); Required 12' x 15' includes both dry & HRD storage
2. HRD (Human Remains Detection) storage
 - a. Separate from dry storage – protect against HRD items transferring smell to dry storage items
 - b. Meat freezer chest: existing 5 cf; required 10 cf
 - c. Secure room with door locks
 - d. Work table, cabinets for cutting boards, knives, etc.
3. Dry storage:
 - a. Typical storage containers: ammo cans & pelican cases
 - b. Soil probes 6' long
 - c. Hooks to hang wet gear
 - d. 6' tall shelves & cabinets are adequate
4. Vehicle bay:
 - a. Truck F250 short cab; trailer 23' long; + winch, total length 46'
 - i. Prefer trailer be hooked up all the time for rapid response
 - b. Need minimum 3 ft. clearance at each end of bay
 - c. Electric hookups for 3 trickle chargers for truck and boat motors
 - i. Likes idea of charging at each end of bay for truck and boat trailer
- d. Water hook ups & vehicle washing likely to occur outside of vehicle garage
5. Secure storage room for Unit records:
 - a. Most records are digital & stored in the cloud
 - b. Physical storage maybe 2-3 pull out legal sized file drawers
 - c. Would like bookshelves for storage in this space
 - d. Likes the idea of 8 ft. x 8 ft. storage closet for each unit
6. Future outdoor parking: parking spots in shade to temporarily leave dogs in vehicles while parked
7. Unit workspaces:
 - a. Ample electric outlets to charge multiple K9 GPS collars
 - b. Need to be able to download collars to computer
 - c. An occasional radio battery would be charged
8. Offices: Unit wonders why we have dedicated offices.
9. Laundry: Use mop sink as a dog washing station.

MEETING NOTES - SMR

Unit representative: Nick Constantine, Gordon Smith, Garth Bruce, David Dunphy, Greg Prothman, Steve Allen, Imran Rahman, Doug McCall

Purpose: Discuss Unit specific program elements

Date: 6/5/2020

Meeting Notes:

1. (2) meeting rooms:
 - a. Accommodate 25 – 30 people
 - b. Maybe sliding wall to divide larger meeting space
 - c. Example from NOLS wilderness medicine campus
2. Secure storage @ vehicle bays:
 - a. Existing storage is a 5 ft. cube
 - b. Ventilation to dry equipment, conditioned space
 - c. (2) sets of equipment – allows vehicles to be ready at all times
 - i. After mission – (1) set to dry; 2nd dry set loaded onto vehicle immediately
 - d. Do not dry equipment in secure storage, instead lockable drying cages secured to walls
 - e. Units to build out to accommodate specific needs
 - f. Flexible space
3. Vehicle bays:
 - a. (2) Ford F350s extended cabs with box on bed
 - b. Recommend all bays to be open to each other
 - c. Provide power supply
 - d. Snowmobile & command trailers
4. Rigging training:
 - a. Instead of dedicated space could be vehicle bay – need to pull vehicles out
 - b. 40-50 feet tall space x 26.5 ft deep x 35 ft.
 - c. Possibly exterior training on the outside of wall also
 - d. Locate at end of vehicle garage, adjacent to unit equipment storage
 - e. Landing 30 – 40 ft above finished floor, stair up to landing
 - i. 10 ft. wide min. – protocol 3m between rope & anchor preferably 5m
 - ii. Wide enough to handle 30 people
 - f. Rigging anchors (rated to minimum of 4,400 lbs)
 - i. 4 anchors from roof above landing edge
 - ii. 8 anchors on back wall
5. Drop testing:
 - a. 450 lb. load, 5,000 lb dynamic design load for structure
 - b. (2) anchor points in roof structure
 - c. (1) power winch each anchor point or (1) adjustable winch for both anchor points
 - d. Anchor drop point to back wall horizontal separation 2 ft minimum
 - e. Anchor drop points to handle minimum shock load of 6,000 lbs potentially more
 - f. Provide catwalk on other side of drop anchor from wall; edge of catwalk 1 ft from anchor
 - g. Camera located 30 ft away from anchor point; position 20 ft. above finished floor
 - h. To protect finish floor under drop points from damage either:
 - i. Provide moveable impact matt or
 - ii. Insert impact resistant floor system at this location

MEETING NOTES - SMR

Unit representative: Nick Constantine, Gordon Smith, Garth Bruce, David Dunphy, Greg Prothman, Steve Allen, Imran Rahman, Doug McCall

Purpose: Discuss Unit specific program elements

Date: 6/5/2020

Meeting Notes Continued:

6. Unit workspace:
 - a. Make this a multi-purpose space with flexibility for many uses
7. Secure storage – Unit paperwork:
 - a. Mostly digital records
 - b. Maybe need 1 -2 file cabinets for paper related records
 - c. Proposed each Unit have an 8 ft. x 8 ft. storage closet – paperwork & outreach materials
 - i. Outreach materials – pop up canopy, banners, brochures
8. Laundry needs sterilization equipment – ‘Extractor’ <https://unimac.com/>
9. Mudroom look to NOLS wilderness medicine campus for example

MEETING NOTES - NWH SAR

Unit representative: Kurt Froelich

Purpose: Discuss Unit specific program elements

Date: 7/7/2020

Meeting Notes:

1. Most members live in Snohomish County – about 20 members
2. All horse training takes place out of Harry Osborne park in Sedro Wolley off of Hwy 20 – north cascades
 - a. Do not anticipate any need for horse training at headquarters
3. Training on foot could happen at headquarters – training similar to ESAR training except smaller scale
 - a. Use classrooms to teach basics
 - b. Use site, if available, to teach on foot skills – land nav course
 - c. Currently train at Lord Hill Park & use Snohomish SAR classrooms
4. No need for vehicle, equipment, or trailer storage at headquarters – all vehicles are personal & stored at home
 - a. Possibly store 1 horse trailer at HQ
5. Unit stores 1 truck & trailer at Snohomish SAR, several KCSARA members belong to Snohomish SAR also
6. Unit typically has an average response time of 3 hours
7. Unit responds to events all over state
8. Potentially use offices when meeting other members
9. Really likes the potential of a new HQ to provide a central place for training events and outreach events to occur.

MEETING NOTES - PNWTA

Unit representative: Raven Alder, John MacDuff, Sooraj Mandampulli

Purpose: Discuss Unit specific program elements

Date: 7/13/2020

Meeting Notes:

1. Unit purpose & skills
 - a. Determine direction of missing person(s) travel & timeline they passed through
 - b. Crime scene investigation ability
 - c. Fundamentally follow human signs in the environment – footfall, handfall
 - d. Currently 4 members
2. Unit does not have a lot of equipment, maybe backpack & tracking instruments
 - a. Does not need equipment storage at HQ,
 - b. All equipment personal & in member homes
3. Unit does not need much, if any, paperwork storage at HQ; although would likely use a space in some way if available
4. Unit training usually occurs along the I-90 corridor on Thursdays
 - a. Important not to use the same courses multiple times due to left over human signs from previous events
 - b. Events may attract 6 trainees, broken into 2-3 groups with trainers
 - c. Trainees have come from all around NW even Canada
 - d. Training course from 100-200 steps long
 - e. Start flag & an end flag
5. Unit will likely use classrooms for training – powerpoint
6. Certification program – usually run by outside organization
 - a. 3 day weekend class
 - b. 20-25 people
 - c. May need bunk room capabilities for all to stay on site for weekend
 - d. Meals typically provided but need dedicated person
 - e. Previously used a church camp
7. Unit has monthly meeting for members
 - a. Currently uses fire station or library meeting rooms
 - b. Sees value in having dedicated HQ classrooms for these meetings, scheduling certainty

MEETING NOTES - RSVU

Unit representative: Alan Labissoniere

Purpose: Discuss Unit specific program elements

Date: 6/16/2020

Meeting Notes:

1. RSVU – Regional Special Vehicles unit: 22 members
 - a. 1 Ford F350
 - b. Personal snowmobiles
 - c. 3 ATVs
 - d. 1 UTV – 6 seater, tracks for snow
 - e. 1 snowcat “snowtrack” – 7 people seats
 - f. 4 trailers
 - i. Snowtrack: 7 ft. x 16 ft.
 - ii. 2 ATVs: 5 ft x 12 ft
 - iii. UTV: 6 ft. x 18 ft. always attached to F350
 - iv. Fully enclosed trailer: 7 ft. x 18 ft.
2. RSVU – the largest unit by equipment footprint
 - a. Require 3 vehicle bays
 - b. 1 bay pull through with garage doors each end for F350 & UTV trailer
 - c. 1 bay with 2 trailers double stacked
 - d. 1 bay for quads and snowcat and 2 training quads
3. Chain link fence at ends of 3 bays for security
4. ATV lifts or hoist for putting on tracks
5. Maintenance: unit will repair its own vehicles (aside from F350) and will have its own separate tools
6. Storage bays
 - a. Good at end of vehicle bays
 - b. Combine multiple storage bays into one large storage
7. Outside vehicle bay next to garage door a min. 4” diameter bollard for winch winding 3 ft. tall
8. 4 jersey barriers for training

MEETING NOTES - SPART

Unit representative: Eric Olsen

Purpose: Discuss Unit specific program elements

Date: 7/15/2020

Meeting Notes:

1. Unit equipment stored at Snoqualmie Pass ski areas within resort ski patrol facilities, has very limited need for storage at headquarters
2. Classrooms for training sessions would be needed
3. Meeting rooms for unit and public outreach would be needed

UNIT CONTACTS

Unit Contacts (as of the date of this document)

King County Search & Rescue Association (KCSARA)

President: Jennifer Brenes
p: (425) 301-0482
e: president@kcsara.org

Prime Contact: Jeff Fischer
p: (425) 466-9286
e: jeff.fischer@kc4x4sar.org

King County Explorer Search & Rescue (ESAR)

President & Unit Contact: Valon Miller
p: (360) 305-0715
e: president@kcesar.org

King County 4x4 Search & Rescue (4x4)

President & Unit Contact: Scott Corning
p: (425) 681-9301
e: president@kc4x4sar.org

King County Search Dogs (KCSD)

President: Jen Skiver-Thompson
p:
e: president@kcsearchdogs.org

Unit Contact: Kristen Elliott
p: (425) 531-1324
e: kristen.elliott@kcsearchdogs.org

Seattle Mountain Rescue (SMR)

President & Unit Contact: Nick Constantine
p: (206) 779-9440
e: chair@seattlemountainrescue.org

Ski Patrol Rescue Team (SPART)

President & Unit Contact: Erik Olsen
p:
e: president@kcspart.org

Northwest Horseback Search & Rescue (NWHSAR)

President & Unit Contact: Kurt Froelich
p:
e: msgfroel1@gmail.com

Pacific Northwest Trackers Association (PNWTA)

President & Unit Contact: John McDuff
p:
e: johntty@gmail.com

King County Incident Support Team (IST)

President & Unit Contact: Gabe Marcus
p: 425-941-4305
e: president@kcist.org

Regional Special Vehicle Unit (RSVU)

President & Unit Contact: Alan Labissoniere
p: (206) 423-7157
e: president@rsvu.org

