

2017

Year in Review



New tabulation system

Elections replaced its decade-old tabulation equipment with a new state-of-the-art system.

In 2017, Elections upgraded to a new tabulation and voting system that better serves the County's growing voter population. The new equipment consists of user-friendly accessible voting units, high-speed scanners and an improved system to correct ballots with physical irregularities.



Prepaid postage pilot

Prepaid postage was provided on ballot return envelopes during two special elections.

Elections successfully piloted prepaid postage during two special elections: The February 2017 election in the City of Maple Valley and the Shoreline School District, and the April 2017 election in Vashon. Objectives for the prepaid postage test included understanding whether or not the process worked administratively and to see if more voters returned their ballots than in previous elections. Overall voter turnout was seven-to-10 points higher than projected.



Voter Education Fund

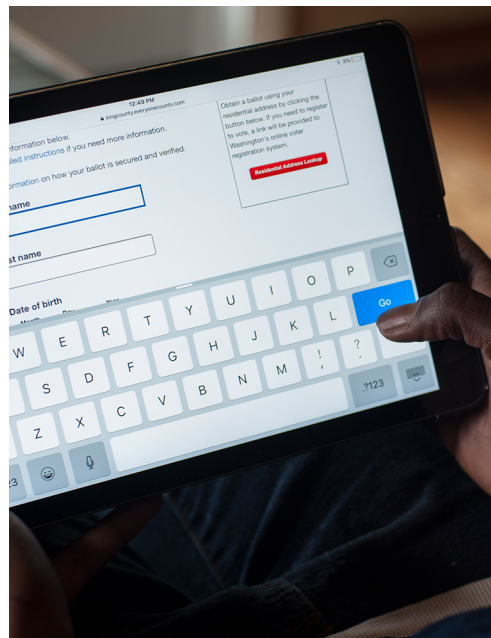
King County Elections and Seattle Foundation provided \$435,000 in funding for voter engagement in historically underrepresented communities.

The Voter Education Fund is a government, philanthropic and community partnership to remove barriers to voting in diverse communities. A total of 30 community-based organizations received funding to offer basic education about voting in King County and technical assistance, such as helping voters complete a voter registration form.

Record-breaking number of candidates

More than 600 candidates filed for office.

There were more than 330 local offices subject to election in 2017. Elections organized and hosted two candidate workshops for those interested in running for office in the County. The workshops were free and open to the public. Candidate filing took place from May 15-19. A total of 634 people filed to run for office, setting a new record.



My Voter Information tool

King County Elections launched a new application that allows voters to view their registration information and track their ballots at four different stages.

The new My Voter Information application allows voters to see their current registration information, the candidates and measures on their ballot, and to be able to track their ballot at four different stages. A voter can see when their ballot was sent, when it was received, when their signature was verified and finally, when their ballot was counted.

kingcounty.gov/elections

Expanded service

The Elections Annex in downtown Seattle expanded service.

In addition to offering voter registration services, the Elections Annex now serves as an Accessible Voting Center beginning 20 days before each election. The annex also accepts signature challenge letters.



New interactive maps

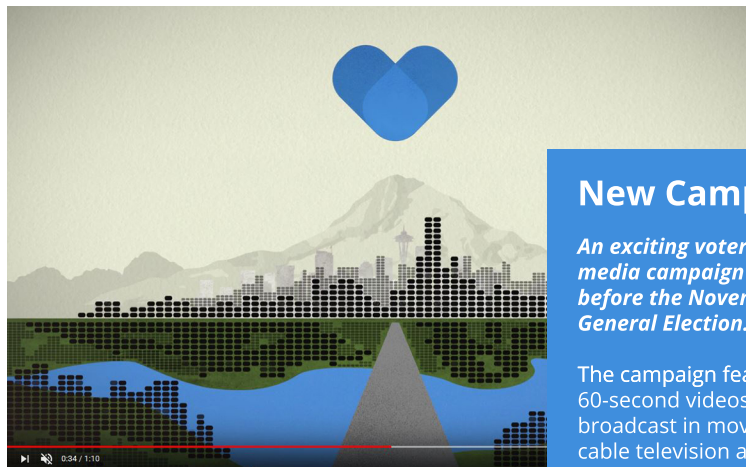
Maps show voter registration and turnout based on demographics.

The Graphic Information System team launched two interactive maps that provide demographic data. The voter turnout map shows the percentage of voter turnout by area or precinct for the 2010-2016 general elections. The map shows turnout by year for all voting precincts. The voter registration map shows the percentage of registered voters by census tract for the 2013-2016 general elections. King County has an overall 80 percent registration rate.

More ballot drop boxes

Elections opened 12 new ballot drop boxes in 2017.

Several communities received a drop box for the first time, including the Central District in Seattle, Fall City, Kenmore, Mercer Island, Newcastle, and Tukwila. King County now has a total of 55 drop boxes. Voters continue to rely on drop boxes as a convenient way to cast their ballots. About 53% of voters returned their ballots to a drop box during the 2017 General Election.



New Campaign

An exciting voter engagement media campaign launched just before the November 2017 General Election.

The campaign featured two, 60-second videos that were broadcast in movie theaters, on cable television and across social media channels for about two weeks leading up to the November 2017 General Election. The campaign was aimed at educating people about the importance of their vote. Collectively, the videos received more than 3 million views.

From the Director...

Dear Friends,

I am excited to share with you King County Election's Year in Review for 2017. I'm very proud of our many accomplishments. We've selected ten that we believe represent our mission to improve voter access and to conduct fair, open and accurate elections.

Most important to me is the work we did to remove barriers to voting. Elections opened 12 new ballot drop boxes throughout King County, for a current total of 55. Many of the new additions were in cities and communities receiving their first drop box. Voters continue to greatly appreciate this option as we saw more than half of all ballots returned to a drop box during the 2017 Primary and General elections.

We successfully piloted prepaid postage during the February and April special elections. As part of their ballot packets, voters received return envelopes with the postage already paid. We were thrilled to see that overall voter turnout for the elections was seven-to-ten points higher than our projections.

Also in 2017, we joined forces with the Seattle Foundation to create the Voter Education Fund, a government and philanthropic partnership to remove barriers to voting in diverse and historically underserved communities. A total of 30 community-based organizations received \$435,000 in grants to increase voter engagement in their communities.

Lastly, we replaced our elections tabulation equipment with a state-of-the-art system that better serves the County's growing voter population. The new system has allowed us to process ballots with increased efficiency and produce faster results on election night.

As we head into 2018, I'm excited about the future. We're hoping to launch prepaid postage countywide and are actively working towards this goal. We're also working with the State Auditor and the US Department of Homeland Security to conduct security audits of our facility and IT systems. I look forward to 2018 being another year of success and continual improvement.

Sincerely,

Julie Wise
Director of Elections

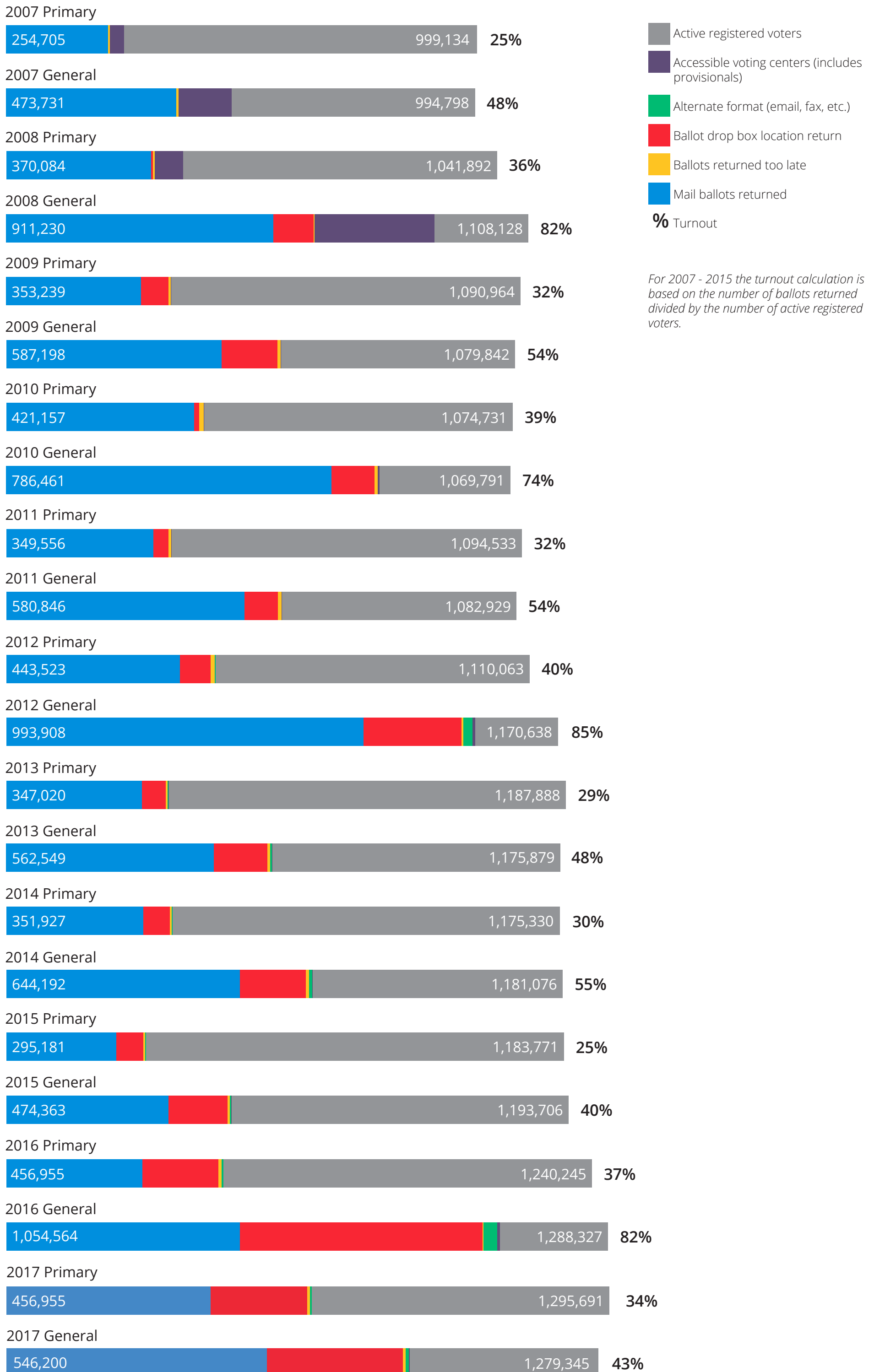
Data-driven voter input

Voters surveyed about drop boxes and prepaid postage.

Elections surveyed a sample of registered voters who were part of the second prepaid postage test. Questions were emailed to voters who cast a ballot during the April special election in Vashon. The purpose of the survey was to understand voters' experiences with using prepaid postage to return their ballots. Another survey was sent to voters who used the ballot drop box at the Ballard Branch Library during the November 2017 General Election. Survey responses helped Elections gauge where to install a future drop box to relieve pressure on the Ballard location.

Voter turnout

(total ballots returned / active registered voters)





King County Elections Historical Turnout Information						Included in Total Ballots Counted		
Election	Active Registered Voters**	Turnout*	Total ballots returned	Total ballots counted	Mail ballots counted on Election Day (first report)	Provisional ballots issued (includes those issued by other counties)	Provisional ballots counted	Ballots cast in Accessible voting units (AVU)
General 2017	1,279,345	43%	554,163	546,200	292,466	18	15	0
Primary 2017	1,295,691	34%	444,479	437,453	242,057	4	1	0
Apr Special 2017	8,725	53%	4,629	4,567	3,978	0	0	0
Feb Special 2017	63,706	40%	25,366	24,902	18,654	0	0	1
General 2016	1,288,327	82%	1,054,564	1,041,613	615,025	761	428	5,027
Primary 2016	1,240,245	37%	456,955	448,263	232,810	30	22	211
May Presidential Primary 2016	1,233,778	33%	406,298	390,743	317,724	49	31	124
Apr Special 2016	375,199	32%	121,287	119,287	98,091	5	0	14
Feb Special 2016	627,083	29%	179,706	176,617	146,101	2	1	28
General 2015	1,193,706	40%	474,363	467,608	246,090	47	34	274
Primary 2015	1,183,771	25%	295,181	289,596	204,938	12	7	98
Apr Special 2015	1,185,271	25%	299,172	293,372	250,437	1	1	24
Feb Special 2015	86,955	37%	31,755	31,090	26,053	1	0	5
General 2014	1,181,076	55%	644,192	631,020	331,228	130	85	760
Primary 2014	1,175,330	30%	351,927	344,583	266,539	12	5	86
Apr Special 2014	1,174,773	39%	454,197	445,190	363,788	0	0	121
Feb Special 2014	630,721	32%	199,192	195,646	160,447	0	0	9
General 2013	1,175,879	48%	562,549	551,665	262,790	41	35	358
Primary 2013	1,187,888	29%	347,020	340,236	244,529	4	4	106
Apr Special 2013	103,028	29%	29,480	28,974	25,642	0	0	0
Feb Special 2013	414,028	33%	136,706	134,116	108,435	0	0	16
Jun Recall 2013	2,947	50%	1,476	1,453	1,242	0	0	0
General 2012	1,170,638	85%	993,908	978,377	556,083	1,114	573	4,465
Primary 2012	1,110,063	40%	443,523	432,049	223,811	37	27	275
Apr Special 2012	235,040	34%	80,443	78,773	68,037	0	0	7
Feb Special 2012	188,407	32%	60,880	59,257	43,866	0	0	6
General 2011	1,082,929	54%	580,846	564,331	279,744	131	64	542
Primary 2011	1,094,533	32%	349,566	338,255	208,833	5	2	192
April Special 2011	44,422	52%	23,195	22,621	19,889	0	0	6
Feb Special 2011	184,469	39%	72,586	70,757	55,608	0	0	10
General 2010	1,069,791	74%	786,461	766,477	373,941	604	376	2,286
Primary 2010	1,074,731	39%	421,157	406,391	243,755	34	29	274
Apr Special 2010	64,567	31%	19,795	18,628	16,061	0	0	0
Feb Special 2010	1,029,039	38%	395,624	387,249	291,305	1	0	114
General 2009	1,079,842	53%	587,198	574,298	254,261	102	57	978
Primary 2009	1,090,964	32%	353,239	344,712	182,036	7	2	353
Mar Special 2009	66,886	38%	25,664	24,880	21,768	0	0	13
Feb Special 2009	1,117,869	23%	254,852	250,394	173,607	1	1	88
VOTE BY MAIL ELECTIONS ↑						Included in poll returns ↓		
General 2008	1,108,128	84%	Data archived	930,038	117,500	32,577	27,466	21,166
Primary 2008	1,041,892	35%	Data archived	363,197	127,341	3,388	3,061	7,127
Presidential Primary 2008	1,008,189	34% ¹	341,640	No data	No data	No data	1,884	14
General 2007	994,798	47%	Data archived	465,999	144,622	4,979	4,579	10,524
Primary 2007	999,134	25%	Data archived	248,964	120,664	1,218	1,115	3,509
General 2006	974,340	65%	Data archived	635,753	119,240	13,483	11,565	14,800
Primary 2006	955,132	36%	Data archived	342,195	45,521	3,024	2,738	7,576
General 2005	1,017,995	54%	Data archived	547,325	149,601	7,170	6,329	
Primary 2005	1,012,559	30%	Data archived	300,569	90,709	2,353	2,153	
General 2004	1,082,406	83%	Data archived	899,199	233,254	32,996	28,010	
Primary 2004	1,006,839	46%	Data archived	466,732	70,299	5,707	5,165	
General 2003	1,035,764	36%	Data archived	369,779	147,759	1,892	1,793	
Primary 2003	1,029,833	30%	Data archived	304,217	140,875	1,582	1,487	
General 2002	1,031,348	53%	Data archived	548,353	75,053	6,885	6,148	
Primary 2002	1,069,573	26%	Data archived	282,987	62,687	1,294	1,224	
General 2000	1,069,139	75%	Data archived	798,942	152,249	17,082	13,307	
Primary 2000	1,037,394	37%	Data archived	380,126	88,597	2,463	2,296	

Voters verified with voting

Election	Poll/provisional ballots counted	Mail voters verified as voting	Total voters verified	Active registered voters	% of voters verified
November 8, 2005	160,254	387,616	547,870	1,017,995	54%
February 7, 2006	23,433	151,797	175,230	554,788	32%
March 14, 2006	2,939	18,297	21,236	65,515	32%
May 16, 2006	5,163	30,918	36,081	103,962	35%
September 19, 2006	69,407	292,900	362,307	955,132	38%
November 7, 2006	192,879	443,943	636,822	974,340	65%
February 6, 2007	21,390	112,076	133,466	433,121	31%
March 13, 2007	2,044	176,380	178,424	396,700	45%
May 15, 2007	2,367	20,670	23,037	77,209	30%
August 21, 2007	30,698	218,338	249,036	999,134	25%
November 6, 2007	111,818	354,549	466,367	994,798	47%
February 19, 2008	35,351	300,358	335,709	1,008,189	33%
March 11, 2008	5,000	49,676	54,676	187,241	29%
May 20, 2008		18,860	18,860	59,998	31%
August 19, 2008	59,057	301,132	360,189	1,041,892	35%
November 4, 2008	282,131	645,572	927,703	1,108,128	84%
February 3, 2009		250,480	250,480	1,117,869	22%
March 10, 2009		24,892	24,892	66,886	37%
August 18, 2009		344,787	344,787	1,090,964	32%
November 3, 2009		574,381	574,381	1,079,842	53%
February 9, 2010		387,287	387,287	1,029,039	38%
April 27, 2010		18,630	18,630	64,567	29%
August 17, 2010		406,428	406,428	1,074,731	38%
November 24, 2010		766,548	766,548	1,069,791	72%
February 8, 2011		70,764	70,764	184,469	38%
April 26, 2011		22,623	22,623	44,422	51%
August 16, 2011		338,278	338,278	1,094,533	31%
November 8, 2011		564,380	564,380	1,082,929	52%
February 14, 2012		59,258	59,258	188,407	31%
April 17, 2012		78,780	78,780	235,040	34%
August 7, 2012		432,061	432,061	1,110,063	39%
November 6, 2012		978,482	978,482	1,170,638	84%
February 12, 2013		134,126	134,126	414,028	32%
April 23, 2013		28,976	28,976	103,028	28%
June 25, 2013		1,453	1,453	3,000	48%
August 6, 2013		340,270	340,270	1,187,888	29%
November 5, 2013		551,712	551,712	1,175,879	47%
February 11, 2014		195,478	195,478	630,721	31%
April 22, 2014		445,224	445,224	1,174,773	38%
August 5, 2014		344,606	344,606	1,175,330	29%
November 4, 2014		631,046	631,046	1,181,076	53%
February 10, 2015		31,091	31,091	86,955	36%
April 28, 2015		293,397	293,397	1,185,271	25%
August 4, 2015		289,620	289,620	1,183,771	24%
November 3, 2015		467,625	467,625	1,193,706	39%
February 9, 2016		176,633	176,633	627,083	28%
April 24, 2016		119,314	119,314	375,199	32%
May 24, 2016		395,389	395,389	1,233,778	32%
August 2, 2016		448,263	448,263	1,240,245	36%
November 8, 2016		1,041,671	1,041,671	1,288,327	81%
February 14, 2017		24,908	24,909	63,706	39%
April 25, 2017		4,567	4,567	8,725	52%
August 1, 2017		437,498	437,499	1,295,691	34%
November 7, 2017		546,219	546,234	1,279,345	43%

*2008 and prior for polls are derived from ballots counted not credited

Signature challenges 2010 - 2017

Election	Challenged and cured	Challenged and not cured	Total challenged	Total ballots returned	% challenged (total challenged / total ballots returned)	% cured (total challenged and cured / total challenged)	% not cured (total challenged and not cured / total challenged)	Total not cured (challenged and not cured / total ballots returned)
February 9, 2010	2162	2741	4903	395624	1.24%	44.10%	55.90%	0.69%
April 27, 2010	258	327	585	19795	2.96%	44.10%	55.90%	1.65%
August 17, 2010	8721	5667	14388	421157	3.42%	60.61%	39.39%	1.35%
November 24, 2010	10461	11192	21653	786461	2.75%	48.31%	51.69%	1.42%
February 8, 2011	1130	858	1988	72586	2.74%	56.84%	43.16%	1.18%
April 26, 2011	245	328	573	23195	2.47%	42.76%	57.24%	1.41%
August 16, 2011	5457	5675	11132	349556	3.18%	49.02%	50.98%	1.62%
November 8, 2011	9506	9180	18686	580846	3.22%	50.87%	49.13%	1.58%
February 14, 2012	1103	897	2000	60880	3.29%	55.15%	44.85%	1.47%
April 17, 2012	1086	765	1851	80443	2.30%	58.67%	41.33%	0.95%
August 7, 2012	4990	2464	7454	443523	1.68%	66.94%	33.06%	0.56%
November 6, 2012	13238	8925	22163	993908	2.23%	59.73%	40.27%	0.90%
February 12, 2013	1590	942	2532	136706	1.85%	62.80%	37.20%	0.69%
April 23, 2013	340	174	514	29480	1.74%	66.15%	33.85%	0.59%
June 25, 2013	21	13	34	1476	2.30%	61.76%	38.24%	0.88%
August 6, 2013	5187	2550	7737	347020	2.23%	67.04%	32.96%	0.73%
November 5, 2013	7619	4682	12301	562549	2.19%	61.94%	38.06%	0.83%
February 11, 2014	2670	1718	4388	199192	2.20%	60.85%	39.15%	0.86%
April 22, 2014	6050	4683	10733	454197	2.36%	56.37%	43.63%	1.03%
August 5, 2014	4806	2934	7740	351927	2.20%	62.09%	37.91%	0.83%
November 4, 2014	7668	6892	14560	644192	2.26%	52.66%	47.34%	1.07%
February 10, 2015	373	307	680	31755	2.14%	54.85%	45.15%	0.97%
April 28, 2015	2457	1401	3858	299172	1.29%	63.69%	36.31%	0.47%
August 4, 2015	1685	1519	3204	295181	1.09%	52.59%	47.41%	0.51%
November 3, 2015	2803	2108	4911	474363	1.04%	57.08%	42.92%	0.44%
February 9, 2016	874	852	1726	179706	0.96%	50.64%	49.36%	0.47%
April 24, 2016	517	477	994	121287	0.82%	52.01%	47.99%	0.39%
August 2, 2016	1592	1280	2872	456955	0.63%	55.43%	44.57%	0.28%
November 8, 2016	5413	8721	14134	1054564	1.34%	38.30%	61.70%	0.83%
February 14, 2017	209	246	455	25366	1.79%	45.93%	54.07%	0.97%
April 25, 2017	29	31	60	4629	1.30%	48.33%	51.67%	0.67%
August 1, 2017	2107	2479	4586	444479	1.03%	45.94%	54.06%	0.56%
November 7, 2017	2450	3712	6162	554163	1.11%	39.76%	60.24%	0.67%

**King County Elections
Historical Election Cost Allocations**

Sum of Total Cost Category	Year	2008	2009	2010	2011	2012	2013	2014	2015	2016	2017
Administration		3,210,380	3,791,394	4,788,937	5,831,644	2,771,388	3,051,229	6,379,953	3,476,526	4,177,756	5,335,486
Advertising		77,180	34,885	30,851	183,169	35,903	348,855	284,523	293,634	164,028	129,098
Central Cost						3,338,669	2,919,686	1,690,888	1,265,295	1,720,616	2,863,684
Election Officials		1,818,580	0	0	0						
Election Support		3,564,588	2,429,002	2,279,573	1,639,377						
Elections Ops./Ballot Processing						1,807,310	744,446	750			
Extra Help		4,337,318	1,750,568	1,745,127	1,106,015						
Misc. Supplies and Services		65,065	15,540	25,301	46,070						
Polling Places		238,558	0	0	0						
Postage		1,074,575	1,545,978	1,408,082	1,073,938	281,310	350,587	527,280	444,008	600,325	409,329
Printing and Binding		2,246,969	2,175,849	1,930,668	1,036,904	2,141,998	2,130,565	2,714,159	1,601,188	2,759,974	2,194,503
Supplies, Repairs & Misc.						158,861	182,568	690,578	1,188,514	1,696,522	131,881
Transportation		71,815	15,034	6,329	6,823	8,407	3,785	13,888	22,481	54,546	32,792
Wages, Temporary Help, Benefits						2,466,275	4,562,024	1,644,397	1,179,404	3,727,119	1,286,906
Capital Cost Recovery						63,309	108,213	83,011	87,089	118,258	93,243
County Support						34,467	43,794	86,437	79,619	698,660	633,535
Overhead		158,126	178,135	338,309	171,474						
Grand Total		16,863,154	11,936,384	12,553,175	11,095,414	13,107,900	14,445,750	14,115,864	9,637,759	15,717,803	13,110,457

Remove building lease payments:	0	(591,000)	(1,430,000)	(2,430,000)	(2,430,000)	(1,430,000)	(2,430,000)	(1,430,000)	(2,430,000)	(1,430,000)	0
Comparative Adjusted Total:	16,863,154	11,345,384	11,123,175	8,665,414	8,665,414	11,677,900	12,015,750	12,685,864	7,207,759	14,287,803	13,110,457

Comments:

From 2008 to 2009 Elections consolidated from three facilities to one, resulting in increase to lease payments and facilities. Polling sites and poll workers eliminated starting 2009.
Spike in temporary election workers in presidential years.
In 2012 the cost categories are revised to more closely reflect State of Wash. BARS Manual requirements.
2016 included a fifth election, the Presidential Primary, which increased total cost.
Effective 2017 building lease payments were absorbed into the department's square footage central cost rates.