

Applications for 2017
Conservation Futures Funds
&
King County Parks Levy Funds

King County
Conservation Futures
Citizens Committee

Conservation Futures Citizens Committee

Summary of Review Process:

Conservation Futures (CFT):

- 57 applications requesting \$21,977,946; \$11,563,394 available

King County Parks Levy (KCPL):

- 27 applications requesting \$10,582,280; \$6,591,000 available

(Overall total of CFT and KCPL requests is \$32,560,226, for \$18,154,394 available)

Review Process:

- Application workshop was held in February 2016
- 57 Overall Applications were submitted by March 9th, 2016
- 6 Field Trips to Applicant Sites in April, 2016
- 4 Meetings to Develop Recommendations
- Committee Recommendation transmittal July, 2016

Cities

Conservation Futures



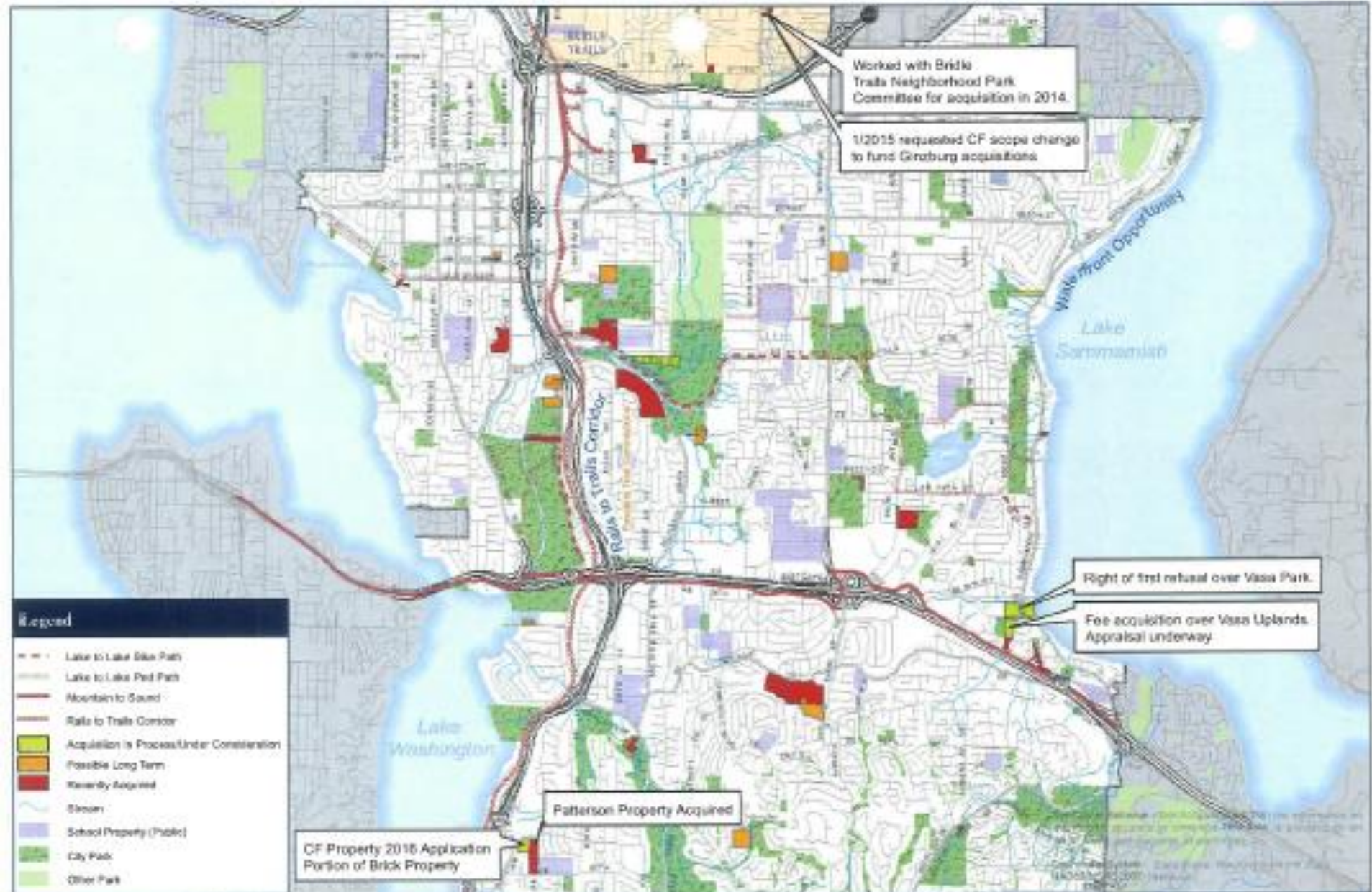
Watts Property - Auburn



Watts Property - Auburn



Watts Property - *Auburn*



Bellevue Parks, Open Space & Greenway System



Source:
City of Bellevue



116TH AVE SE

SE 54TH ST

POTENTIAL PARTNERSHIP WITH BELLEVUE SCHOOL DISTRICT TO EXPAND PUBLIC ACCESS AND STEWARDSHIP OF THEIR OPEN SPACE

SOFT-SURFACE TRAIL

ACCESSIBLE SOFT-PAVED PICNIC ORCHARD PICNIC SHELTER OVERLOOK

CANTILEVER ROOF COVERING PLAY AREA

FREEY KIDZ IDEAL BATTLE PARK WATER SOURCE

GATE

PLAY LAWN

GATE

TYLER PROPERTY OFF-LEASH AREA

PATTERSON PROPERTY OPEN SPACE NATURE/INTERPRETIVE TRAILS

KAYNE BRIDGE & OVERLOOK

KAYNE OVERLOOK

INTERPRETIVE TRAIL @ T.O.S.

STEWARDSHIP DEMONSTRATION AREA

SE 60TH STREET

INDIVIDUAL TO WORK WITH ARLANDER PROPERTY OWNERS TO CREATE A HIGH QUALITY TRAIL CONNECTING TO KING COUNTY PARK & REC. LINK WASHINGTON BLVD AND DS TO LEWIS & CLARK PARK

BRICK PROPERTY OPEN SPACE NATURE/INTERPRETIVE TRAILS

King County Conservation Futures Application Brick Property

Purpose of this rendering is to analyze the potential park & open space benefits of acquiring the "Brick" parcel. A master planning effort with the community would be completed to determine actual Park & Open Space needs. Any potential acquisition is contingent upon review and approval by the Bellevue City Council



Bellevue Greenways and Open Space System



-  Wayne Golf Course Parcel
-  Area Subject to Existing Conservation Easement
-  Parks and Open Spaces



Wayne Golf Course Site Aerial Photo Map

The City of Bothell delivers this data (map) in an AS-IS condition. GIS data (maps) are produced by the City of Bothell for internal purposes. No representation or guarantee is made concerning the accuracy, currency, or completeness of the information provided.

Date: 3/17/2015



2016 CFT/Parks Levy Application
Wayne Golf Course



Wayne Golf Course Front Nine - *Bothell*



Wayne Golf Course - Back Nine - *OneBothell*



Wayne Golf Course - Back Nine - *OneBothell*



Tolt Commons Park - Carnation



Tolt Commons Park - *Carnation*



Tolt Commons Park - *Carnation*



**Tolt River
Additions Site**



-  First Priority
 -  King County Ownership
 -  Incorporated Area
- Photo Year: 2013

King County
Department of Natural Resources and Parks
Water and Land Resources Division

Jan. 29, 2018

Scale: 1:25000
Tolt_Acc_2013.mxd 1:1





Figure 2: Lower Tolt Potential Future Alignments

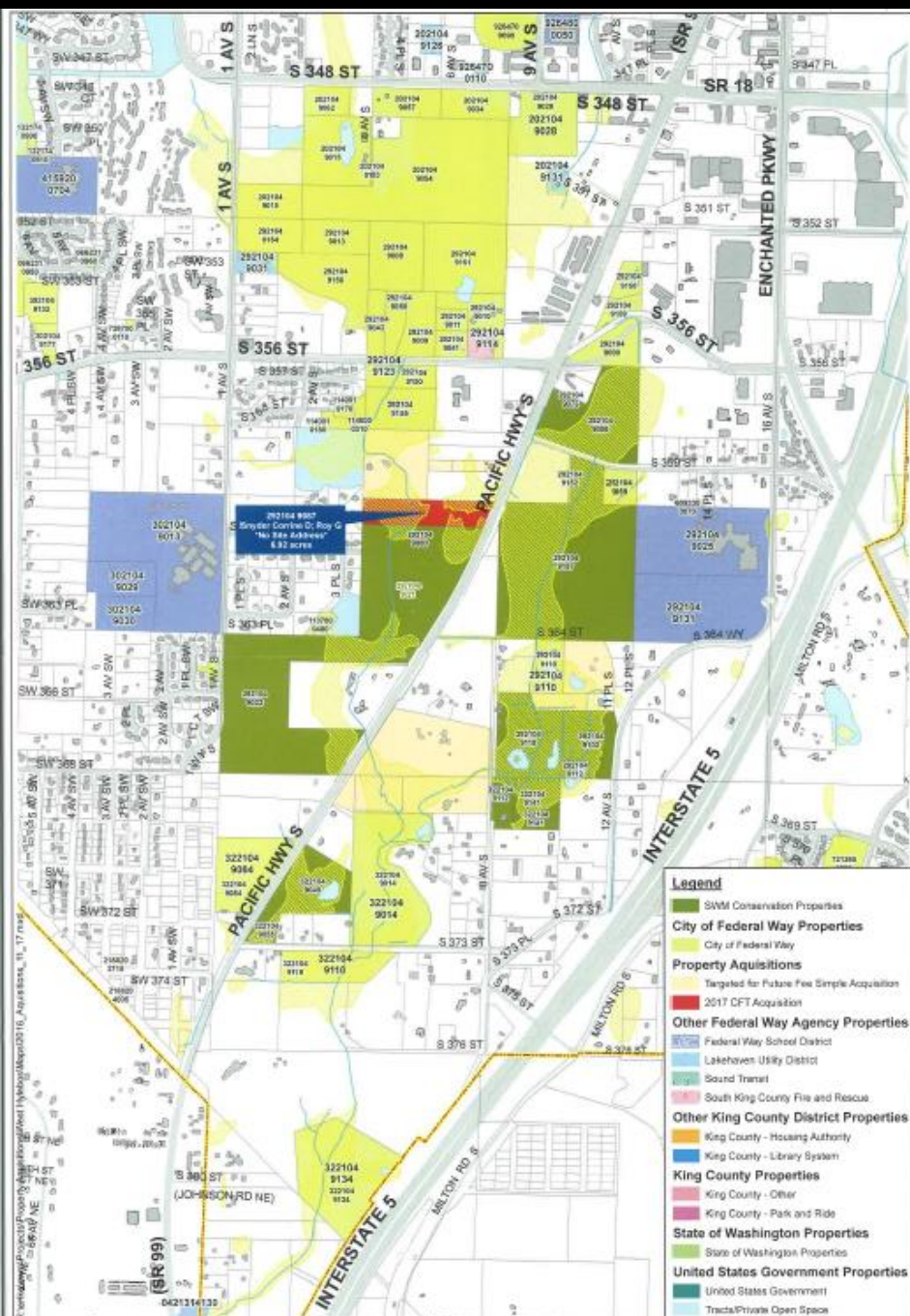
This document is for informational purposes only. It is not intended to be used for any other purpose. The County of King County is not responsible for any errors or omissions in this document. The County of King County is not responsible for any errors or omissions in this document. The County of King County is not responsible for any errors or omissions in this document.

Covington Downtown Plan and Zoning Study





South Covington Park – Jenkins Creek
– *Covington*



- Legend**
- SWM Conservation Properties
 - City of Federal Way Properties
 - City of Federal Way
 - Property Acquisitions**
 - Targeted for Future Fee Simple Acquisition
 - 2017 CFT Acquisition
 - Other Federal Way Agency Properties**
 - Federal Way School District
 - Lakehaven Utility District
 - Sound Transit
 - South King County Fire and Rescue
 - Other King County District Properties**
 - King County - Housing Authority
 - King County - Library System
 - King County Properties**
 - King County - Other
 - King County - Park and Ride
 - State of Washington Properties**
 - State of Washington Properties
 - United States Government Properties**
 - United States Government
 - Tracts/Private Open Space

Scale: 1 inch = 850 feet
 0 425 850
 Feet



This map is intended for use as a graphical representation only.
 The City of Federal Way makes no warranty as to its accuracy.

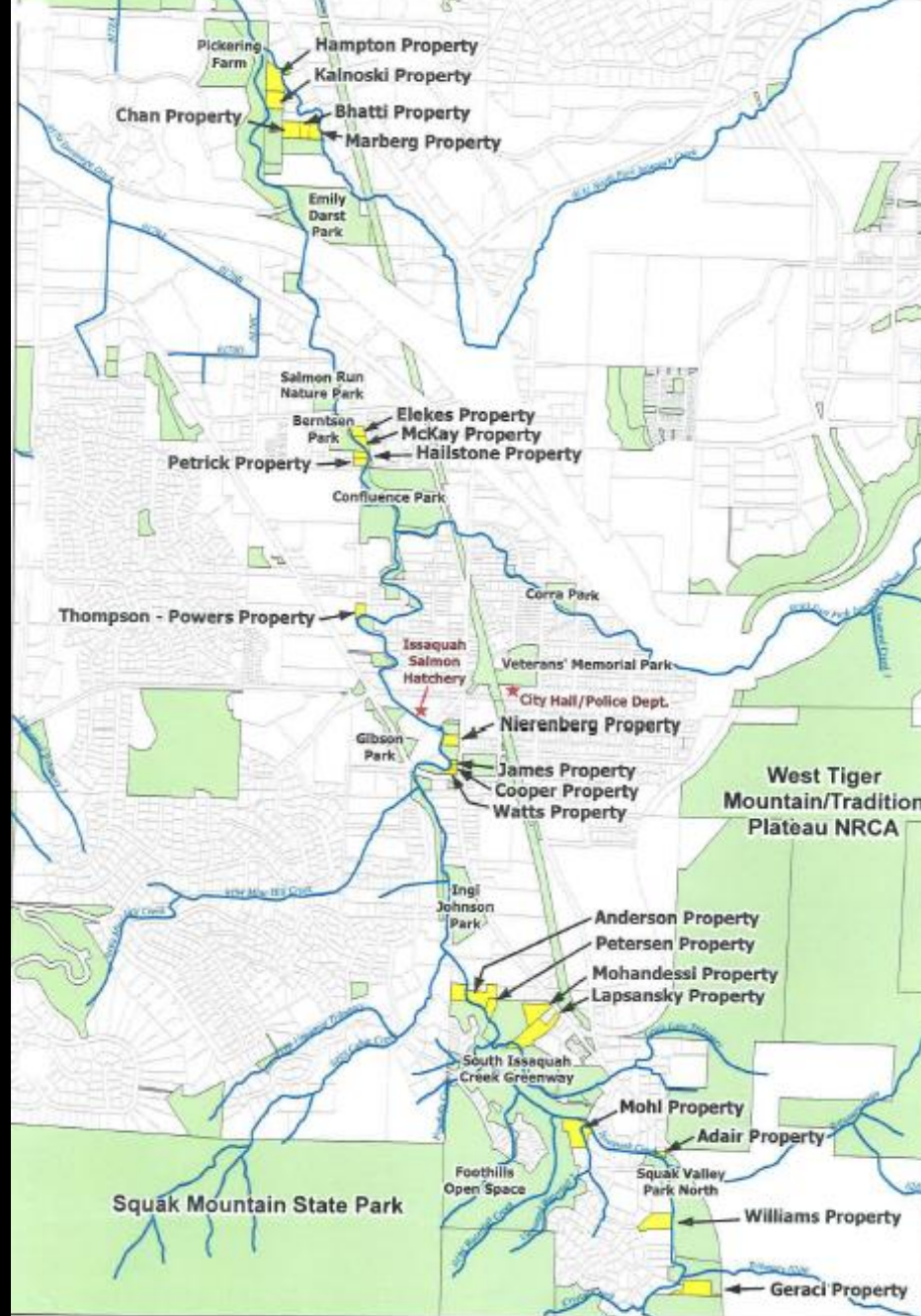




Hylebos Creek – *Federal Way*



Hylebos Creek – *Federal Way*



ISSAQUAH CREEK WATER WAYS PROGRAM



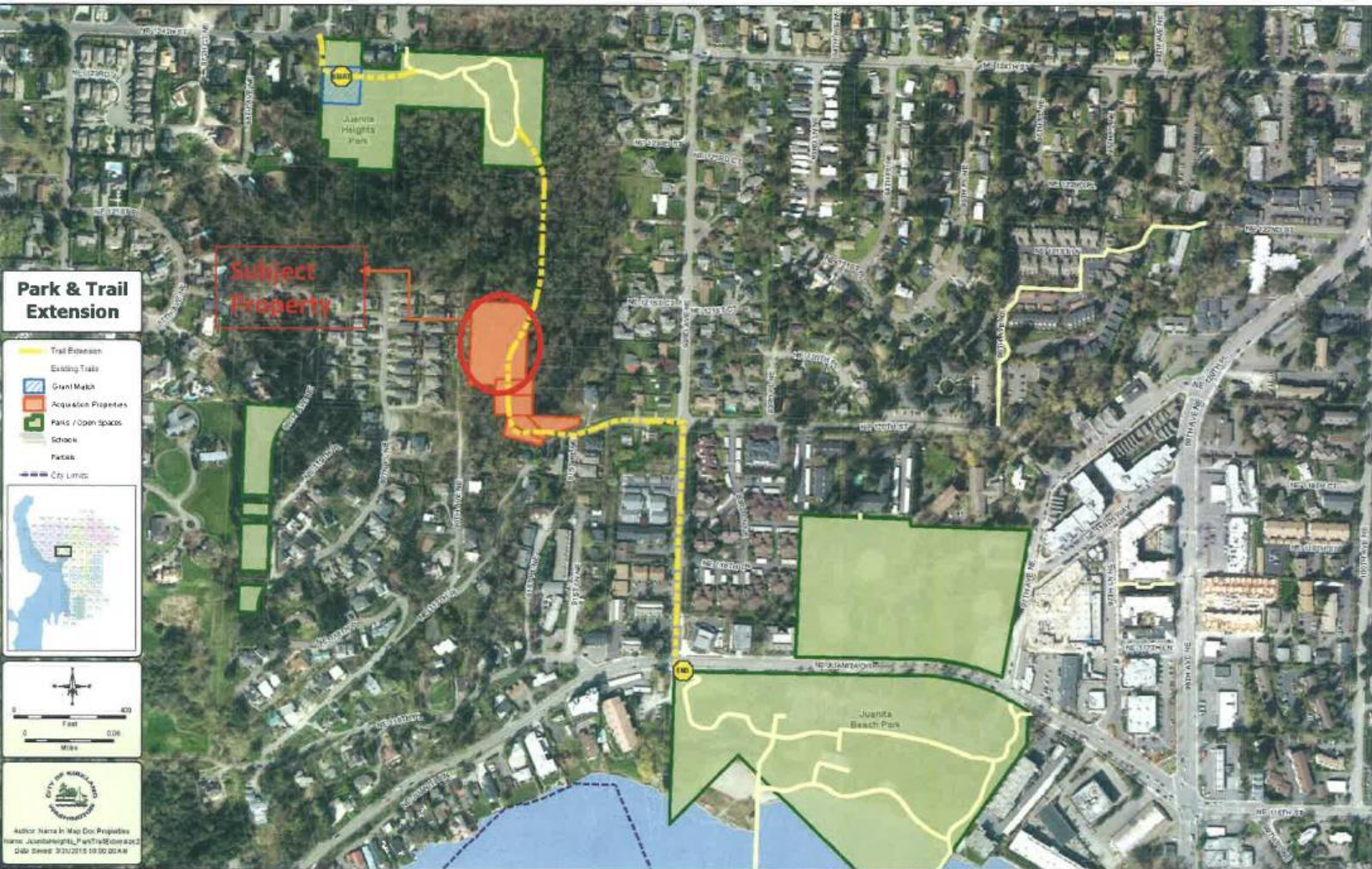
Proposed Acquisitions
 City Owned Parks, Open Space





Issaquah Creek Waterways – *Issaquah*

Juanita Heights Park Expansion and Trail Project – City of Kirkland CFT 2017 Application for Funds



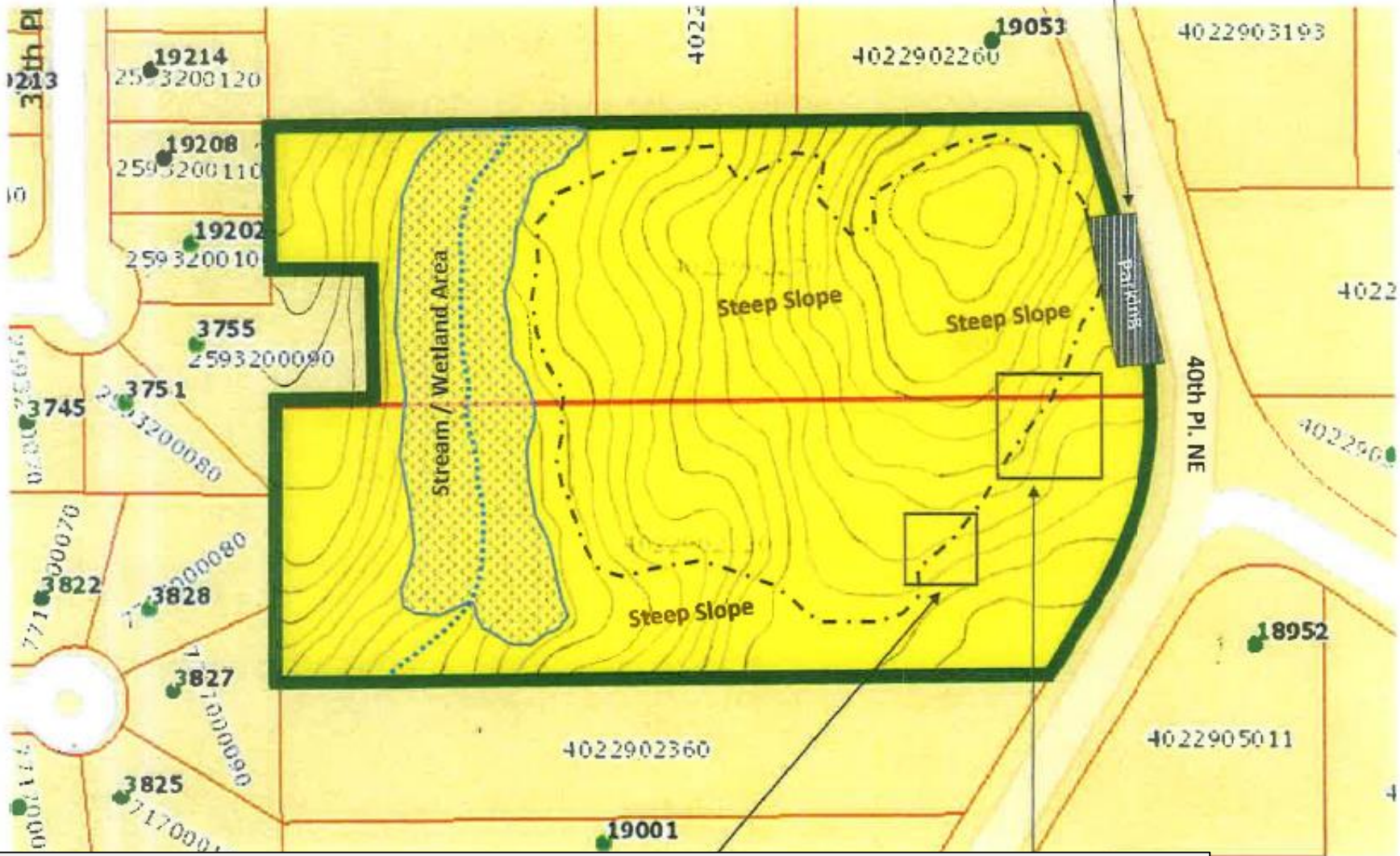


Juanita Heights Park - *Kirkland*

Map 1. Five-Acre Woods Park Plan

Proposed park plan for conceptual purposes; not drawn to scale.

Proposed Small Parking Area
(up to 8 vehicles)



SPU Property - Lake Forest Park



SPU Property – *Lake Forest Park*


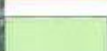


Lake Boren

1

2

Legend

-  Purchased in 2015
-  Purchased in 2016
-  CityProperties



0.2 Miles

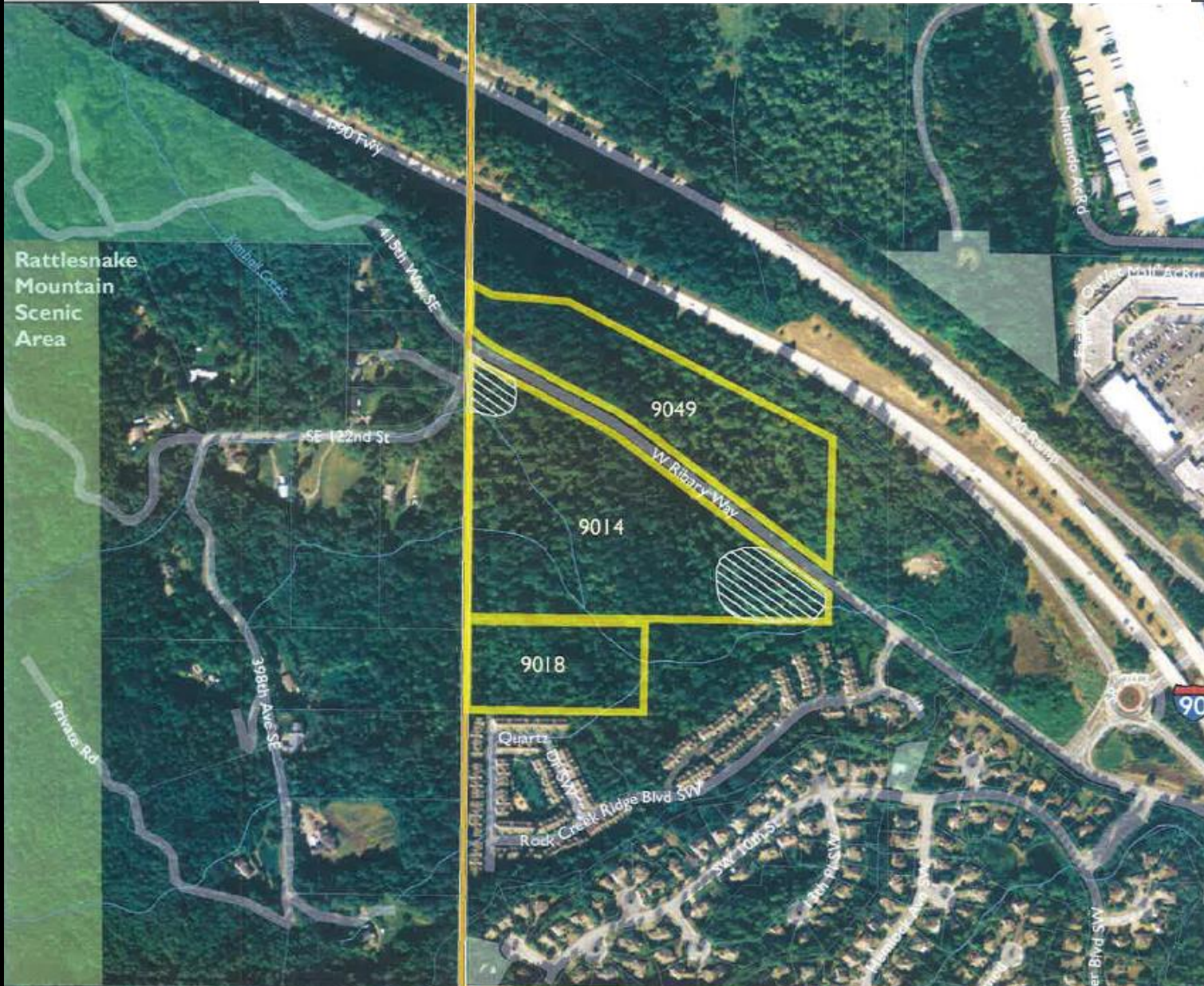


Lake Boren Open Space Acquisition - *Newcastle*



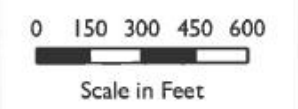
Lake Boren Open Space Acquisition - *Newcastle*

Partnering for a Park / Rattlesnake Mountain Access - North Bend and King County



- Property purchase
- Potential Parking
- Urban Growth Area

- Land Ownership**
- Private
 - WA DNR
 - County Parks
 - Other Public Lands



Map features are approximate and are only intended to provide an indication of focus features. March, 2016



Partnering for a Park – *North Bend,*
with King County

May Creek - Fawcett South Site Map



**MAY CREEK
TRAIL**

CITY OF RENTON

4260 LAKE WASHINGTON BLVD N








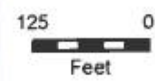
May Creek/Fawcett South - *Renton*

Bitter Lake Playfield Addition



Legend

-  Target
-  Park Boundary
-  Parcel Boundary



1 inch = 200 feet



Bitter Lake Playfield Addition - *Seattle*

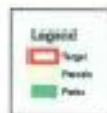


Bitter Lake Playfield Addition - *Seattle*



Lake City Hub Urban Village

©2015, CITY OF SEATTLE
All rights reserved.



50 0 50

Feet

1 inch = 100 feet



No warranties of any sort, including fitness, accuracy, or merchantability accompany this product.

Orthophoto source:
Walker and Assoc., March 2013



Lake City Urban Village Addition- *Seattle*



Lake City Urban Village Addition- *Seattle*



Delridge Open Space



Legend

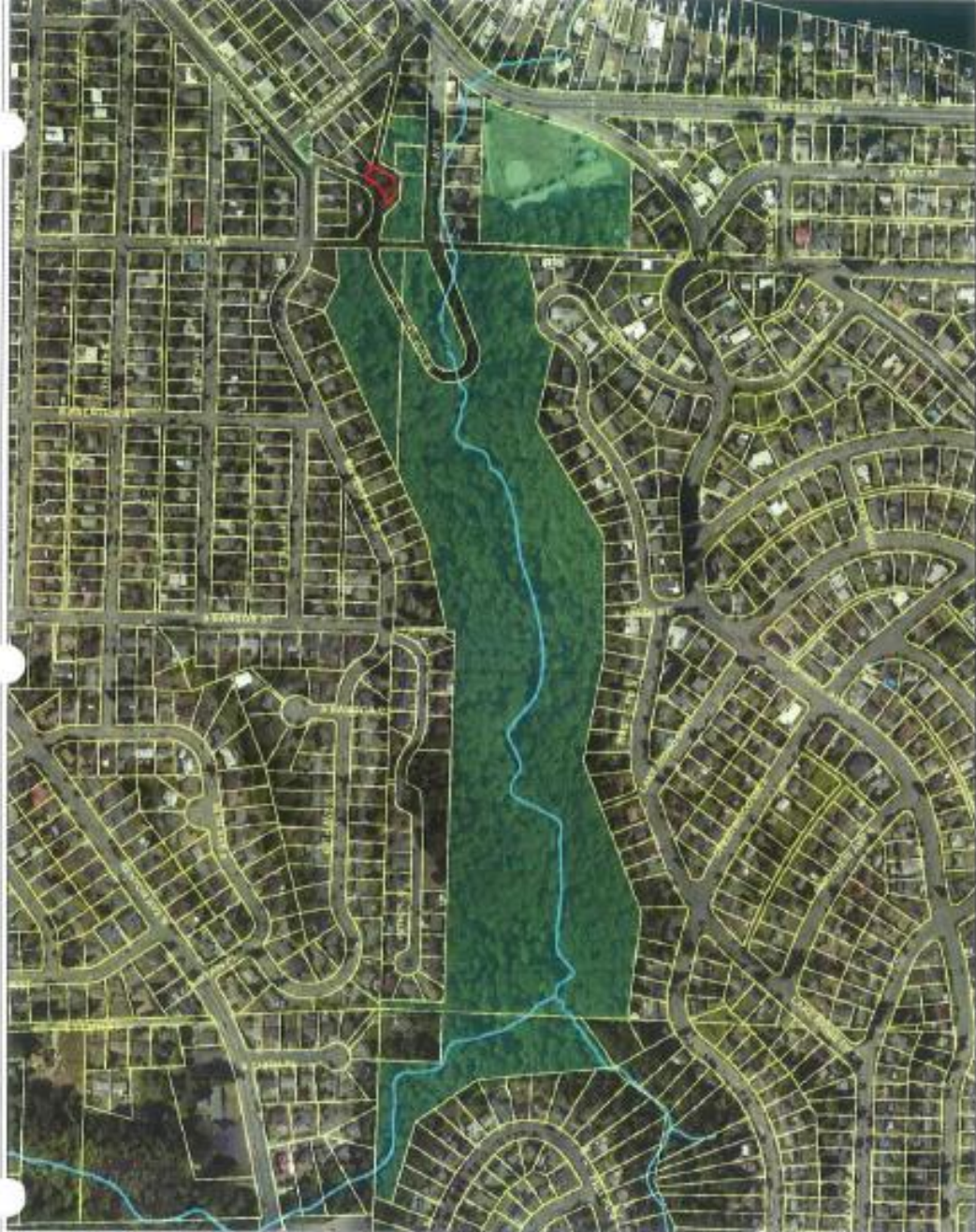
- Target
- Parcel Boundary



©2010, CITY OF SEATTLE
 All rights reserved.
 No warranties of any sort, including
 accuracy, fitness or merchantability
 accompany this product.
 Datafile source:
 Walker and Assoc. 2010
 Map date: March 2, 2010



Delridge Open Space - *Seattle*



Lakeridge Park



Legend

- Legal Property
- Parcels
- Taylor Creek



1 inch = 300 feet

0 75 150 300 450 600

©2003, CITY OF SEATTLE
All Rights Reserved

No warranties of any sort, including accuracy, fitness, or merchantability.

ACQUISITION TO
LAKERIDGE PARK
This area is a public park
and is open to all. No tobacco
products are allowed.
No alcohol is allowed.
No dogs are allowed.
No off-leash dogs are
allowed.
No pets are allowed.
No firearms are allowed.
No weapons are allowed.
No hunting is allowed.
No fishing is allowed.
No camping is allowed.
No overnight stays are
allowed.
No overnight stays are
allowed.



LAKERIDGE PARK
Dead Horse Canyon
Taylor Creek & Trail

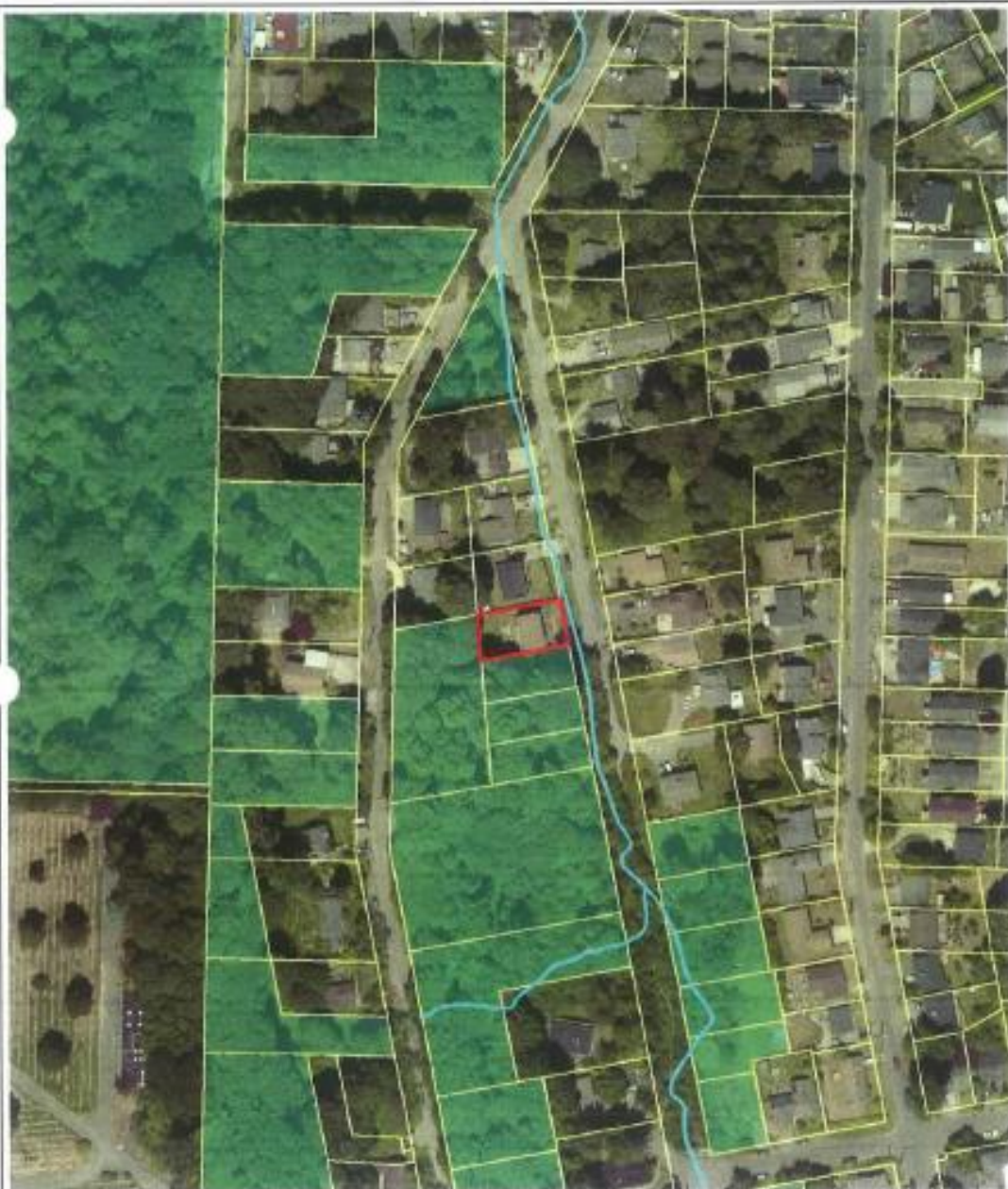
ACQUISITION FUNDED IN PART THROUGH:
• KING COUNTY CONSERVATORY FUTURES FUND

Preserved as Open Space



 **City of Seattle**
Parks and Recreation

Lakeridge Park Addition - *Seattle*



Longfellow Creek



Legend

- Longfellow Creek
- Target Property
- Parcel
- Park



©2015 CITY OF SEATTLE
All rights reserved

No warranties of any sort, including
accuracy, fitness or merchantability
accompany this product

Orthophoto source:
Pictometry
Map date: March 2, 2015



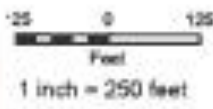
Longfellow Creek Addition - *Seattle*

**Magnolia
Greenbelt**



Legend

-  Targets
-  Park Boundary
-  Parcel Boundary



©2015, CITY OF SEATTLE
All rights reserved.

No warranties of any sort, including accuracy, fitness or merchantability accompany this product.

©Ortho photo source
Floorplan, 2015
File date: February 22, 2015



Magnolia Greenbelt – *Seattle*

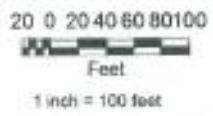


North Beach Natural Area



Legend

- Contour
- Park
- Park Boundary
- Parcel Boundary



©2016 CITY OF SEATTLE
 All rights reserved.

No warranty of any sort, including accuracy, fitness or merchantability, accompanies this product.

Orthoimage taken: 2015/March 200
 Map date: March 2, 2016



Mill Pond/
Borst Lake

Interim King County
Regional Trail Connection

Snoqualmie River

King County
Snoqualmie Valley
Regional Trail

**City of Snoqualmie
Riverfront Reach Acquisitions
2016 CFT Grant Site Map**

March 7th, 2016

- Legend**
- Proposed Riverwalk Trail
 - Trails
 - Streams
 - City Limits
 - Tier 1 Properties
 - Tier 2 Properties
 - Parks/City Owned
 - CFT-acquired project properties to date



Portions of the title that do not appear on this map are hereby acknowledged. The map is intended to provide an overview of the project. Additional information is available in the project report. The City of Snoqualmie is not responsible for any errors or omissions on this map. The City of Snoqualmie is not responsible for any errors or omissions on this map. The City of Snoqualmie is not responsible for any errors or omissions on this map.

RAILROAD AVE SE
MAPLE AVE SE
OLMISTEAD AVE SE
AVE SE
SE RIVER ST
MAPLE
PARK AVE SE
FALLS AVE SE

SE MILL POND RD

MEADOWBROOK WAY SE

SE REINIG RD

SE ALPHA ST

SE WALNUT ST

SE SPRUCE ST

SE PARK ST

SE BETA ST

SE GAMMA ST

SCHLUSMAN AVE SE

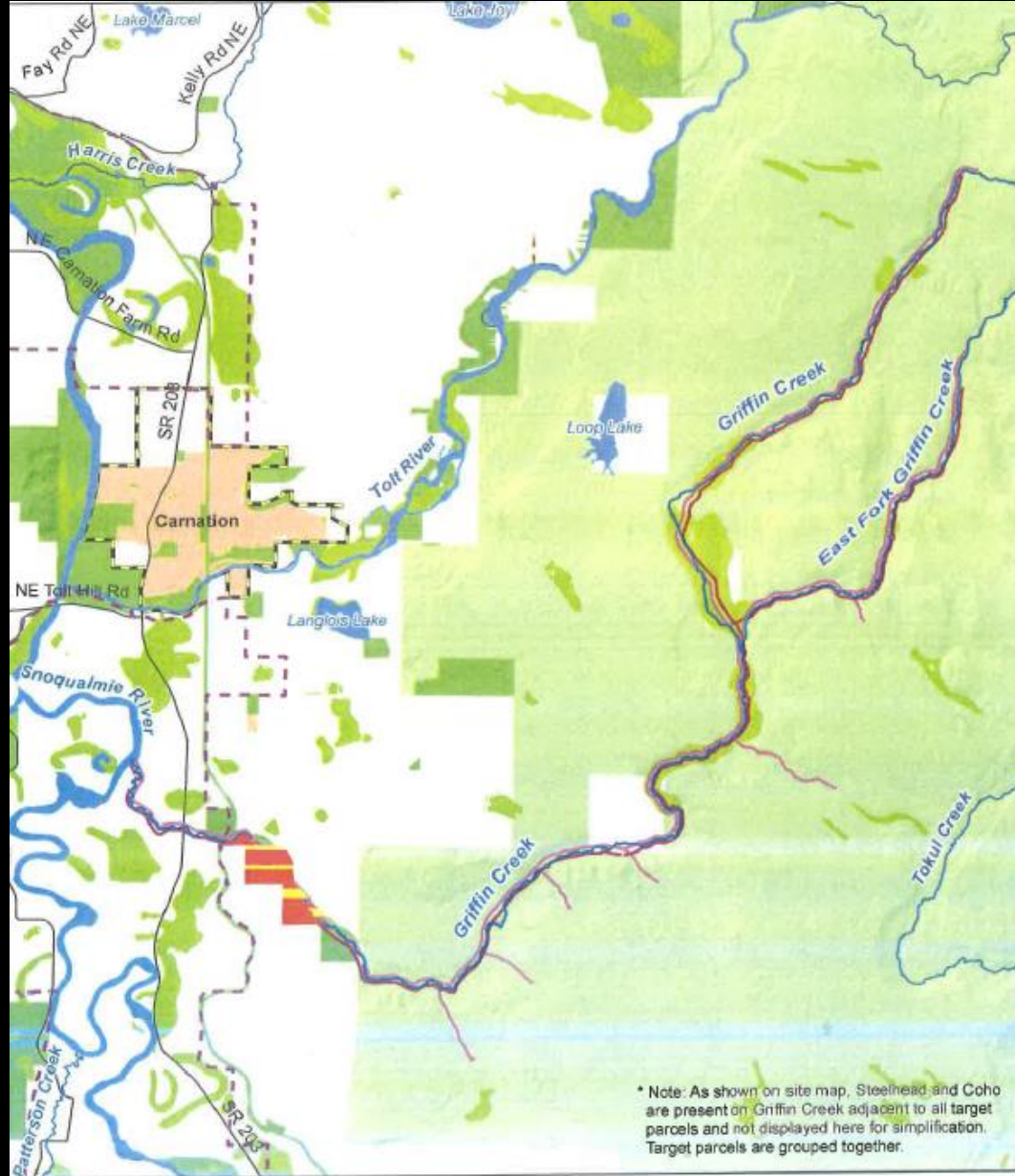
King County Projects:

- Conservation Futures
- King County Parks Levy

Snoqualmie Watershed



Emerald Necklace/Soaring Eagle Park Addn.
- *King County*



* Note: As shown on site map, Steelhead and Coho are present on Griffin Creek adjacent to all target parcels and not displayed here for simplification. Target parcels are grouped together.

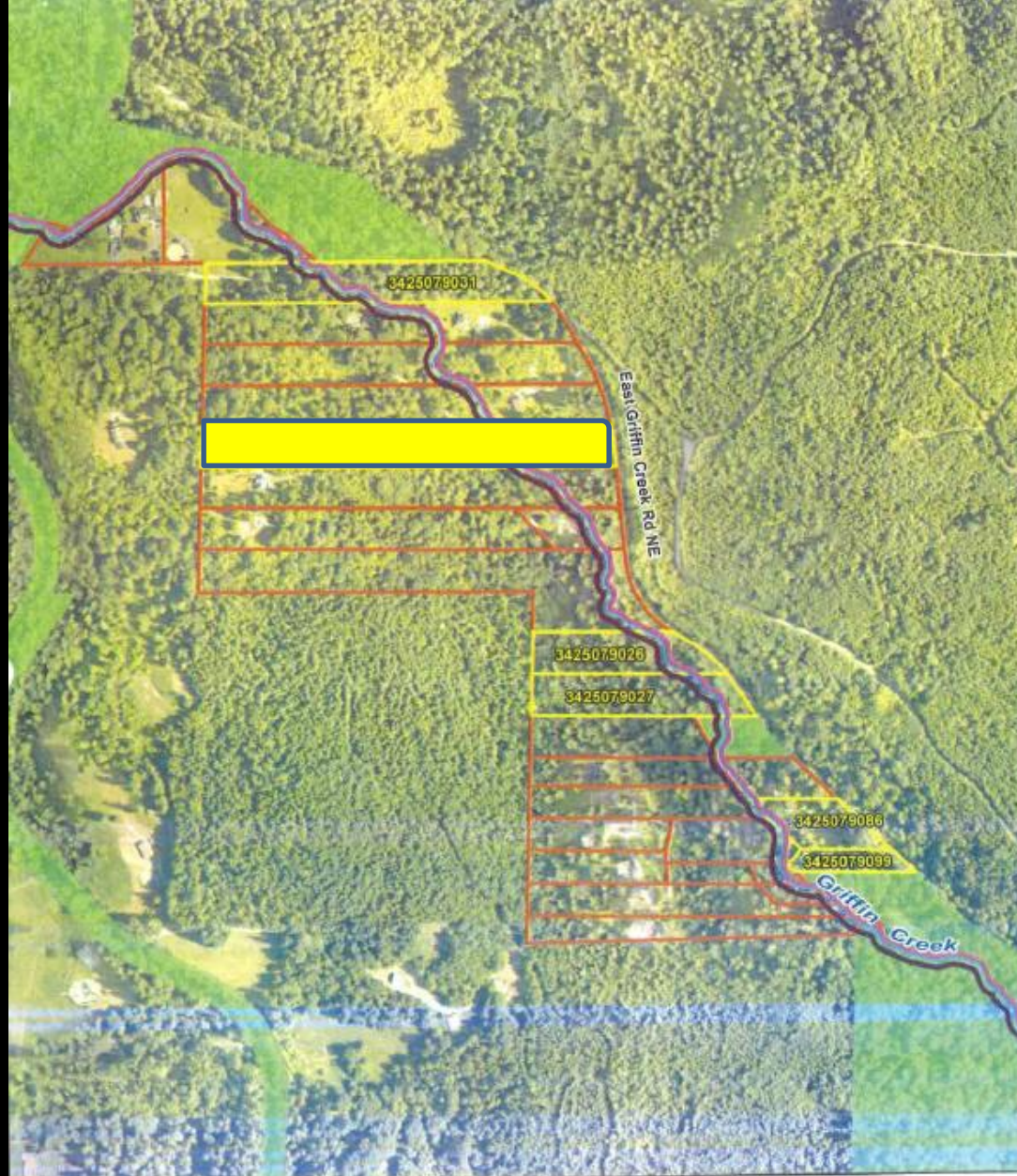
Griffin Creek Natural Area Additions Vicinity

- | | |
|----------------------------------|---|
| First Priority Parcels | Publicly Owned Lands |
| Second Priority Parcels | Incorporated Areas |
| Agricultural Production District | Urban Growth Boundary |
| Wetlands | Steelhead Presence on Griffin and Tribs.* |
| Snoqualmie Forest | Coho Presence on Griffin and Tribs.* |



Jan. 6, 2016

\\dnr\projects\WLR\19001\MapDocs\Griffin_Acquisitions_vicinity.mxd TK



Griffin Creek Natural Area Additions

- First Priority Parcels
- Second Priority Parcels
- Publicly Owned Lands
- Griffin Creek
- Coho Presence
- Steelhead Presence

Jan. 5, 2016

King County
 Department of Natural Resources and Parks
 Water and Land Resources Division

0 200 400 600 800
 Feet

Source: \projects\land\150011_MayDove\Griffin_Acquisitions.mxd, TK



Griffin Creek Natural Area – *King County*



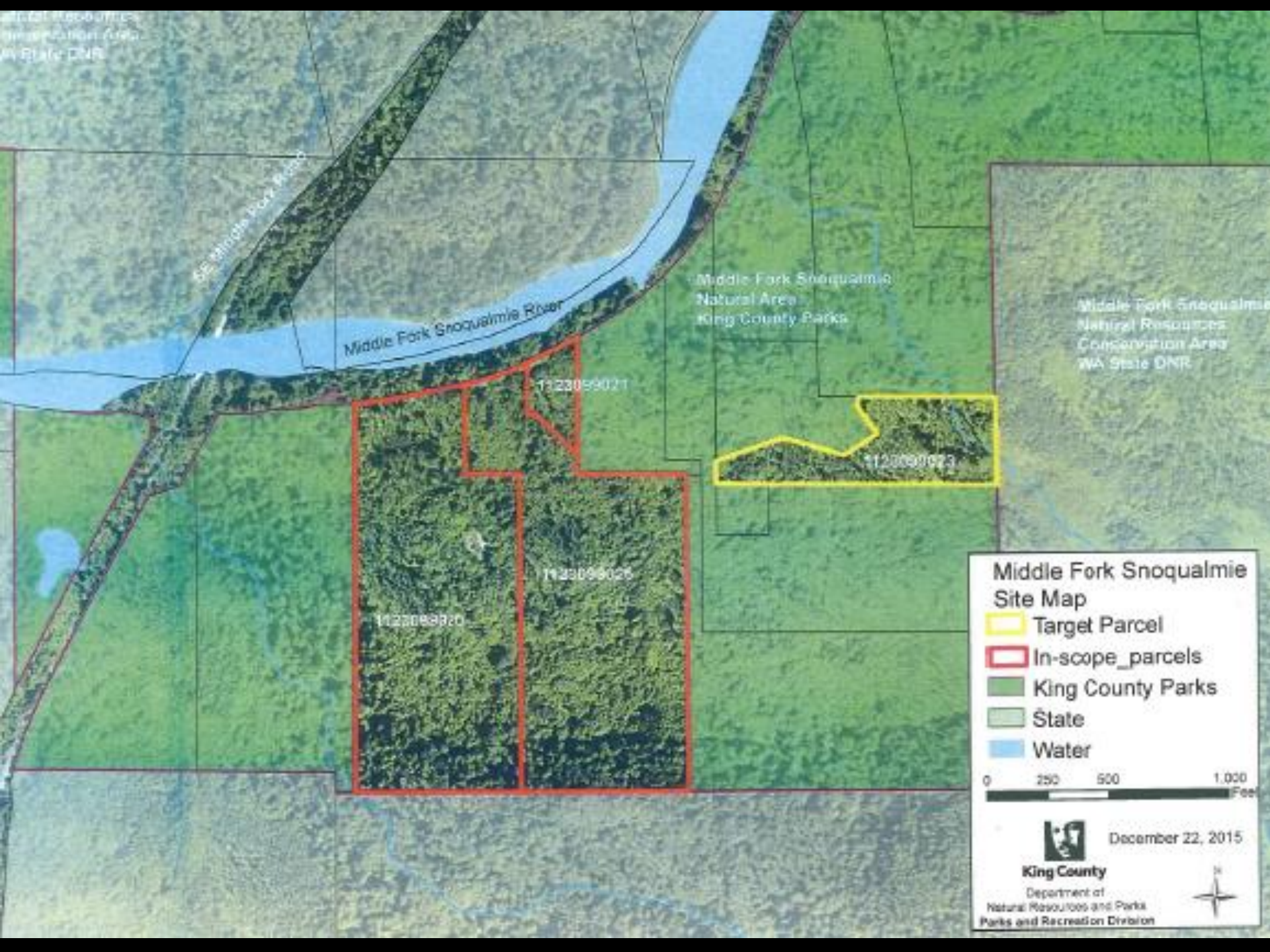
Middle Fork Snoqualmie Vicinity Map

- Publicly Owned Lands
- Parks in King County
 - Federal
 - King County Parks
 - State
- City



March, 2016





Middle Fork Snoqualmie Site Map

- Target Parcel
- In-scope_parcels
- King County Parks
- State
- Water

0 250 500 1,000 Feet

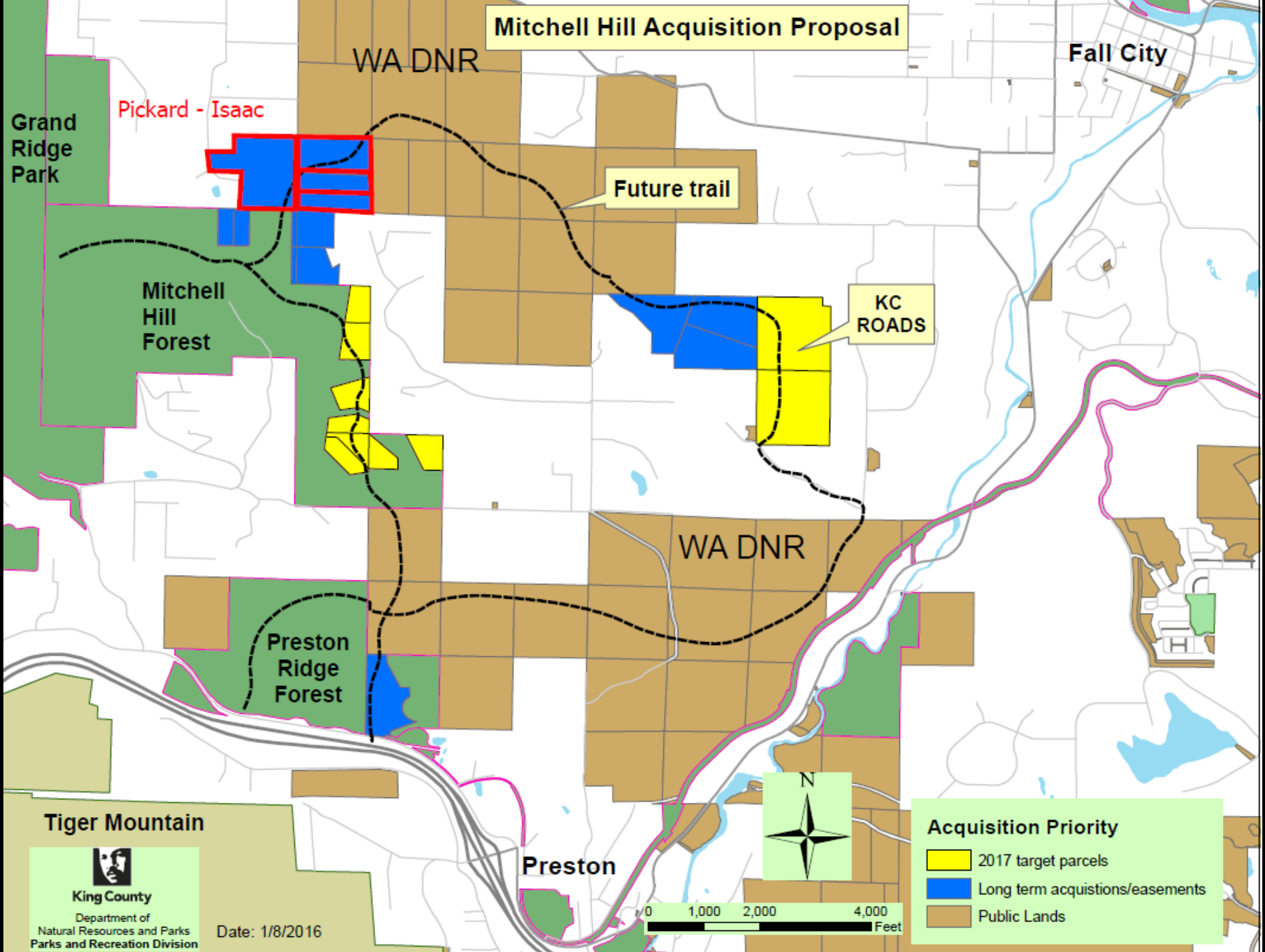
December 22, 2015

King County
Department of
Natural Resources and Parks
Parks and Recreation Division



Middle Fork Snoqualmie NA - *King County*

Mitchell Hill Acquisition Proposal



Grand Ridge Park

Pickard - Isaac

Mitchell Hill Forest

Preston Ridge Forest

WA DNR

WA DNR

Fall City

Future trail

KC ROADS

Preston

Tiger Mountain



King County

Department of Natural Resources and Parks
Parks and Recreation Division

Date: 1/8/2016



0 1,000 2,000 4,000 Feet

Acquisition Priority

- 2017 target parcels
- Long term acquisitions/easements
- Public Lands

A photograph of a forest clearing. In the foreground, there is a grassy area with some dry leaves. A path leads from the clearing into a dense forest. The forest is composed of various trees, including tall evergreens and deciduous trees with bare branches. The sky is overcast with grey clouds.

Mitchell Hill Forest Additions
- *King County*



Snoqualmie at Fall City/Raging River - King County

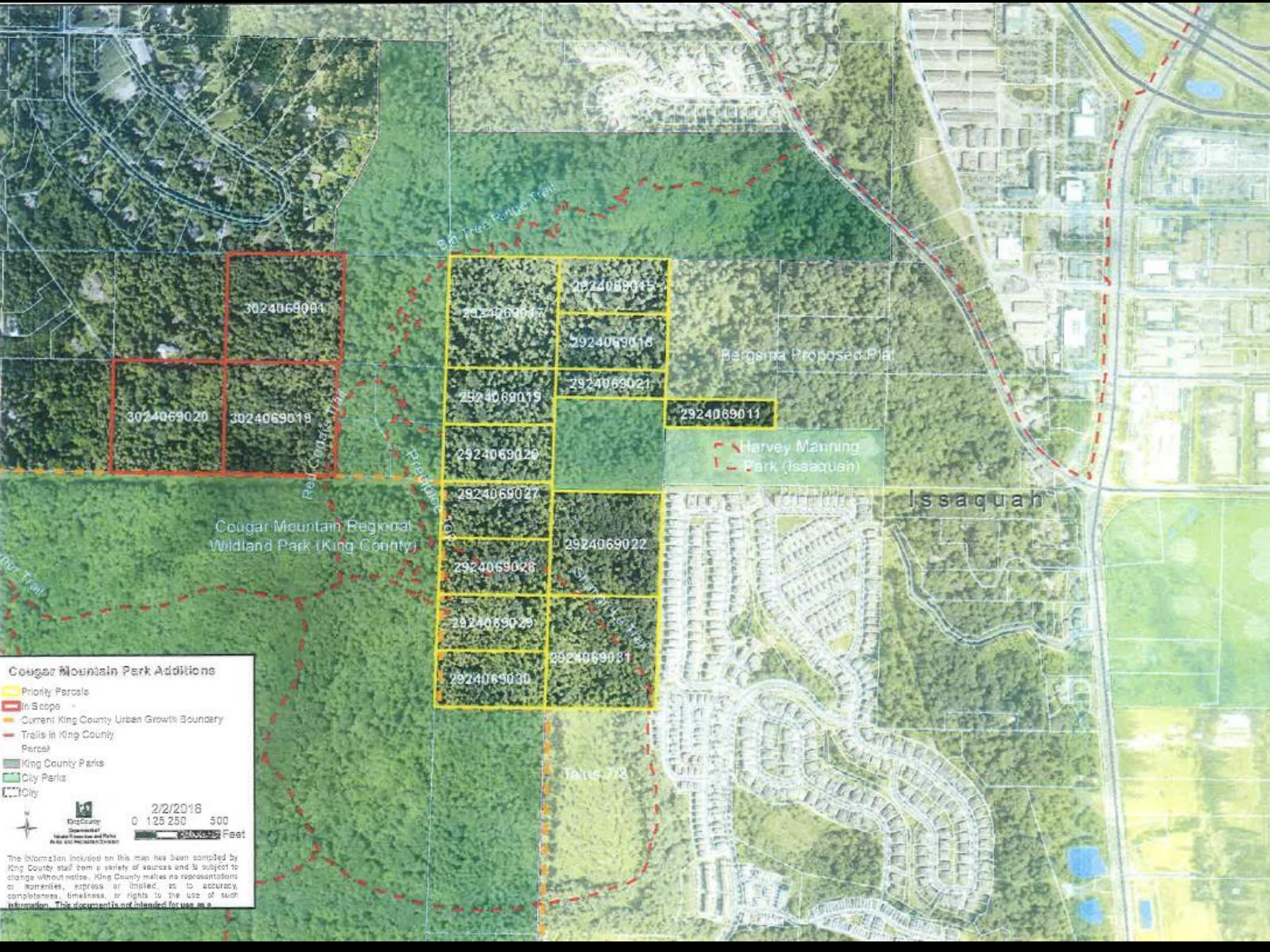


Snoqualmie at Fall City/Raging River - *King County*



Snoqualmie Valley Mill Site / Trail Link
- *King County*

Cedar River /
Lake Washington
Watershed



3024069004

3024069020

3024069018

Cougar Mountain Regional
Wildland Park (King County)

2924069017

2924069019

2924069020

2924069027

2924069028

2924069029

2924069030

2924069015

2924069016

2924069021

2924069022

2924069031

2924069011

Bergina Proposed Plat

Harvey Manning
Park (Issaquah)

Issaquah

Trails 7/8

Cougar Mountain Park Additions

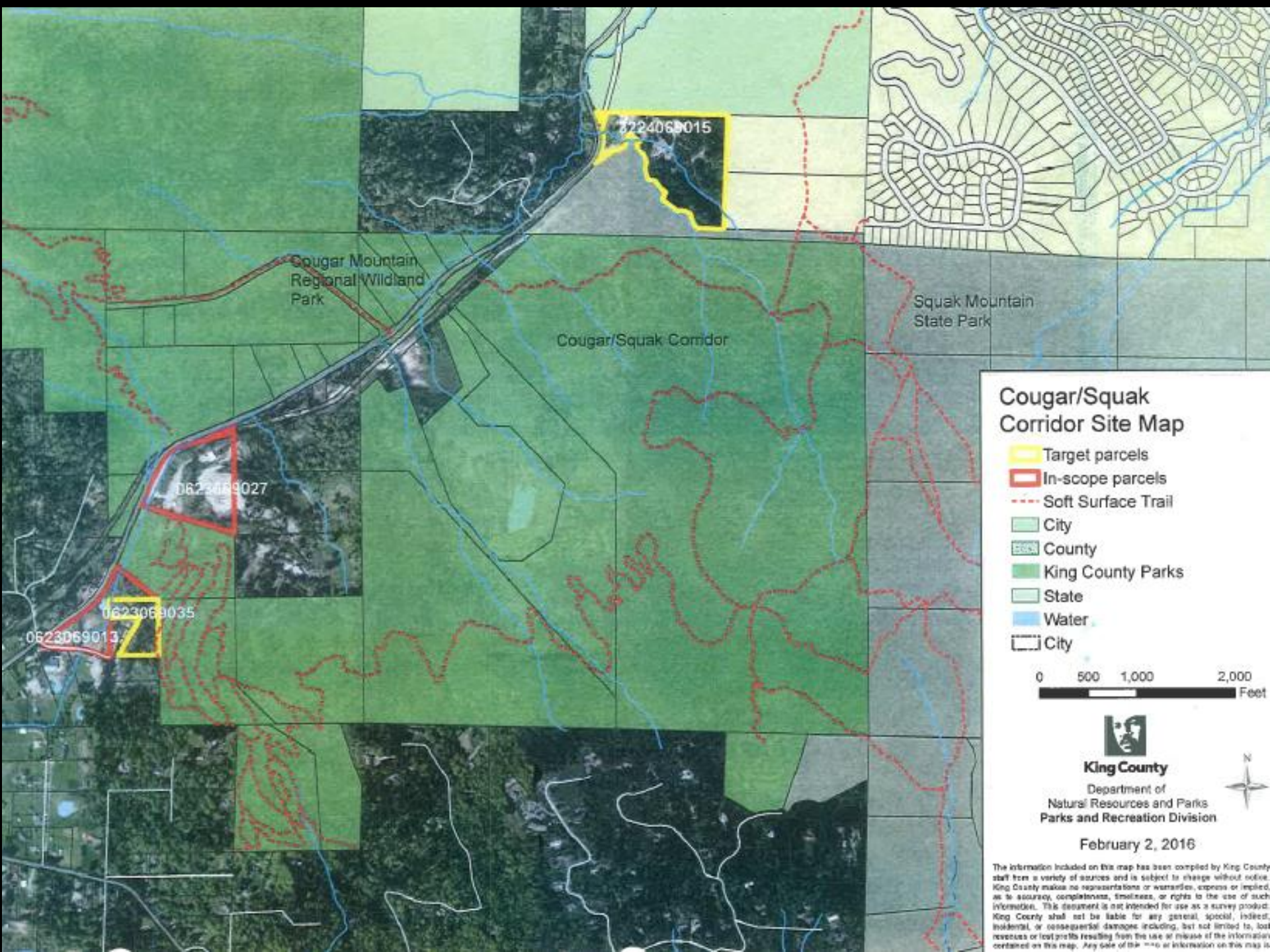
- Priority Parcels
- In Scope
- Current King County Urban Growth Boundary
- Trails in King County Parcels
- King County Parks
- City Parks
- City

2/2/2018
0 125 250 500
Feet

The information included on this map has been compiled by King County staff from a variety of sources and is subject to change without notice. King County makes no representations or warranties, express or implied, as to accuracy, completeness, timeliness, or rights to the use of such information. This document is not intended for use as a...



Cougar Mountain Park Addition – *King County*



06224069015

Cougar Mountain
Regional Wildland
Park

Cougar/Squak Corridor

Squak Mountain
State Park

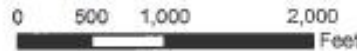
06234489027

0623069035

0623069013

Cougar/Squak Corridor Site Map

-  Target parcels
-  In-scope parcels
-  Soft Surface Trail
-  City
-  County
-  King County Parks
-  State
-  Water
-  City



King County
Department of
Natural Resources and Parks
Parks and Recreation Division



February 2, 2016

The information included on this map has been compiled by King County staff from a variety of sources and is subject to change without notice. King County makes no representations or warranties, express or implied, as to accuracy, completeness, timeliness, or rights to the use of such information. This document is not intended for use as a survey product. King County shall not be liable for any general, special, indirect, incidental, or consequential damages including, but not limited to, lost revenues or lost profits resulting from the use or misuse of the information contained on this map. Any sale of this map or information on this map



Cougar–Squak – *King County*



2016 CFT/Parks Levy Application
Dorre Don Natural Area Additions



Dorre Don Natural Area Additions
- King County

A photograph of a dense forest with a path leading through lush green foliage. The path is narrow and appears to be made of dirt or small stones, winding through the trees. The vegetation is thick and vibrant green, with many leaves and branches visible. The lighting is bright, suggesting a sunny day, with some shadows cast on the path. The overall scene is a natural, wooded area.

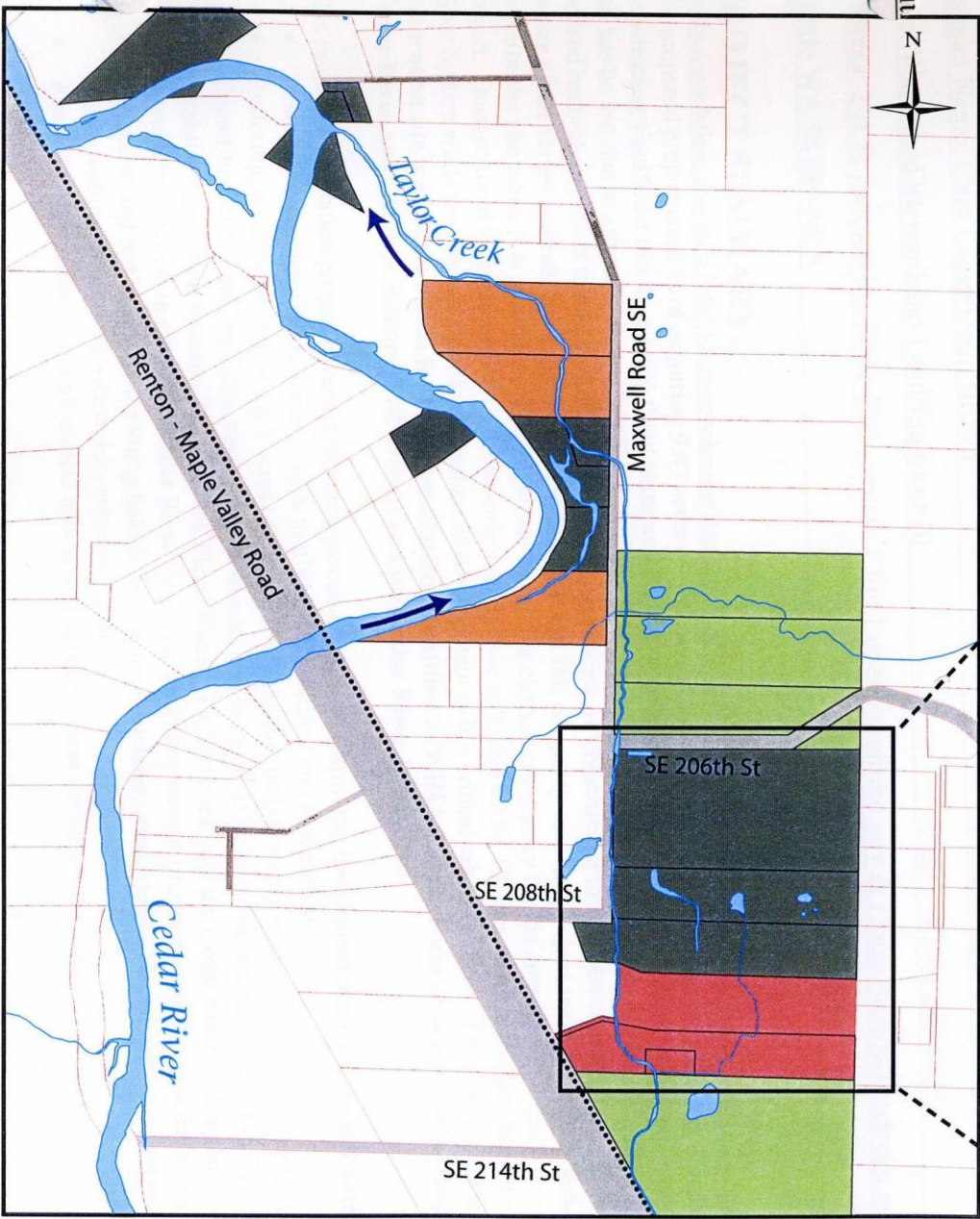
Dorre Don Natural Area Additions
- King County



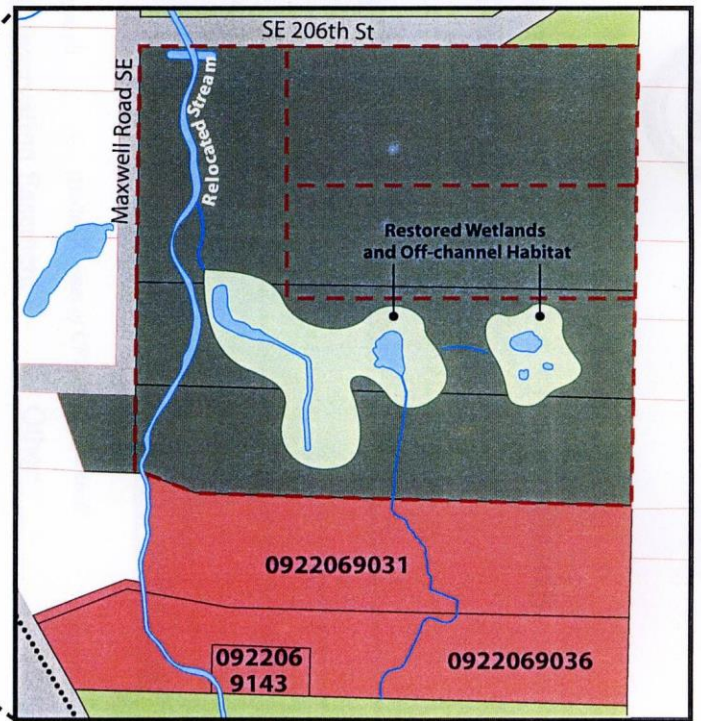
Dorre Don Natural Area Additions
- *King County*

Taylor Creek Acquisition and Restoration

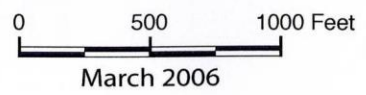
- Target Parcels for CFT Funding
- Target Parcels for Other Funding
- King County-Owned Parcels
- Parcels with Completed or Active Restoration Activities
- Flow Direction of River/Stream
- Cedar River Trail
- Reconfigured Lot Lines



EXPANDED VIEW OF PROJECT AREA



The information included on this map has been compiled from a variety of sources and is subject to change without notice. King County makes no representations or warranties, express or implied, as to accuracy, completeness, timeliness, or rights to the use of such information. King County shall not be liable for any general, special, indirect, incidental, or consequential damages including, but not limited to, lost revenues or lost profits resulting from the use or misuse of the information contained on this map. Any sale of this map or information on this map is prohibited except by written permission of King County.



Map produced by the
King County DNRP GIS Unit and
the Visual Communications & Web Unit
File name: 0603taylorAQUIS.ai wgab



Taylor Creek Restoration (2007) - King County



2016 CFT/Parks Levy Application Bear Creek Natural Area Additions

-  Primary Acquisition Properties
-  Secondary Acquisitions
-  Conservation Easement
-  King County Boundary
-  King County Ownership


Photo Year: 2015

 **King County**
Department of Natural Resources and Parks
Water and Land Resources Division

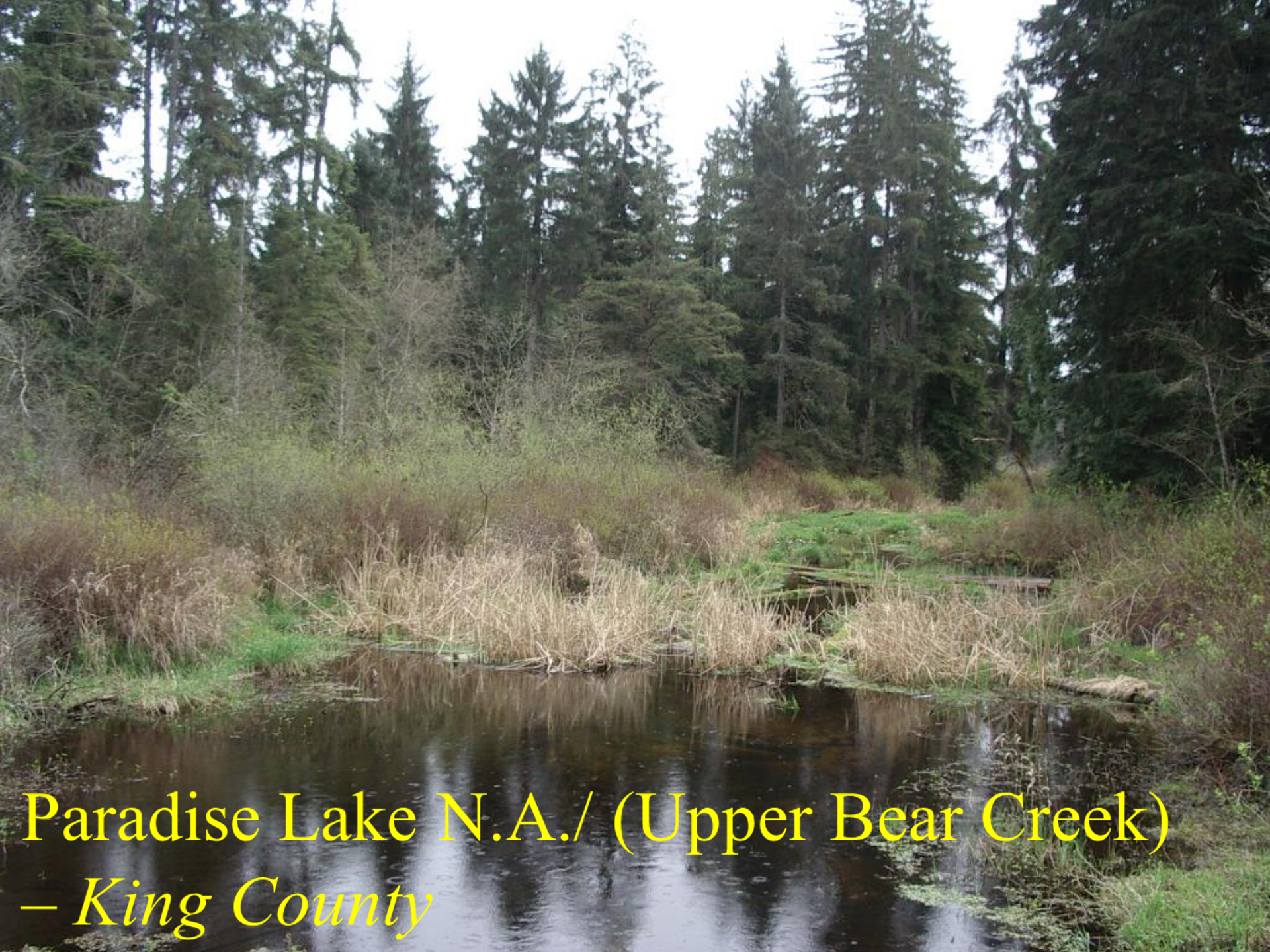
The information included on this map has been compiled by King County staff from a variety of sources and is subject to change without notice. King County makes no representations or warranties, express or implied, as to accuracy, completeness, timeliness, or utility of the use of such information. This document is not intended for use as a survey product. King County shall not be liable for any general, special, indirect, accidental, or consequential damages including, but not limited to, lost revenues or lost profits resulting from the use or misuse of the information contained on this map. Any sale of this map or information on this map is provided except by written permission of King County.



March 3, 2016



Paradise Lake N.A./ (Upper Bear Creek)
– *King County*



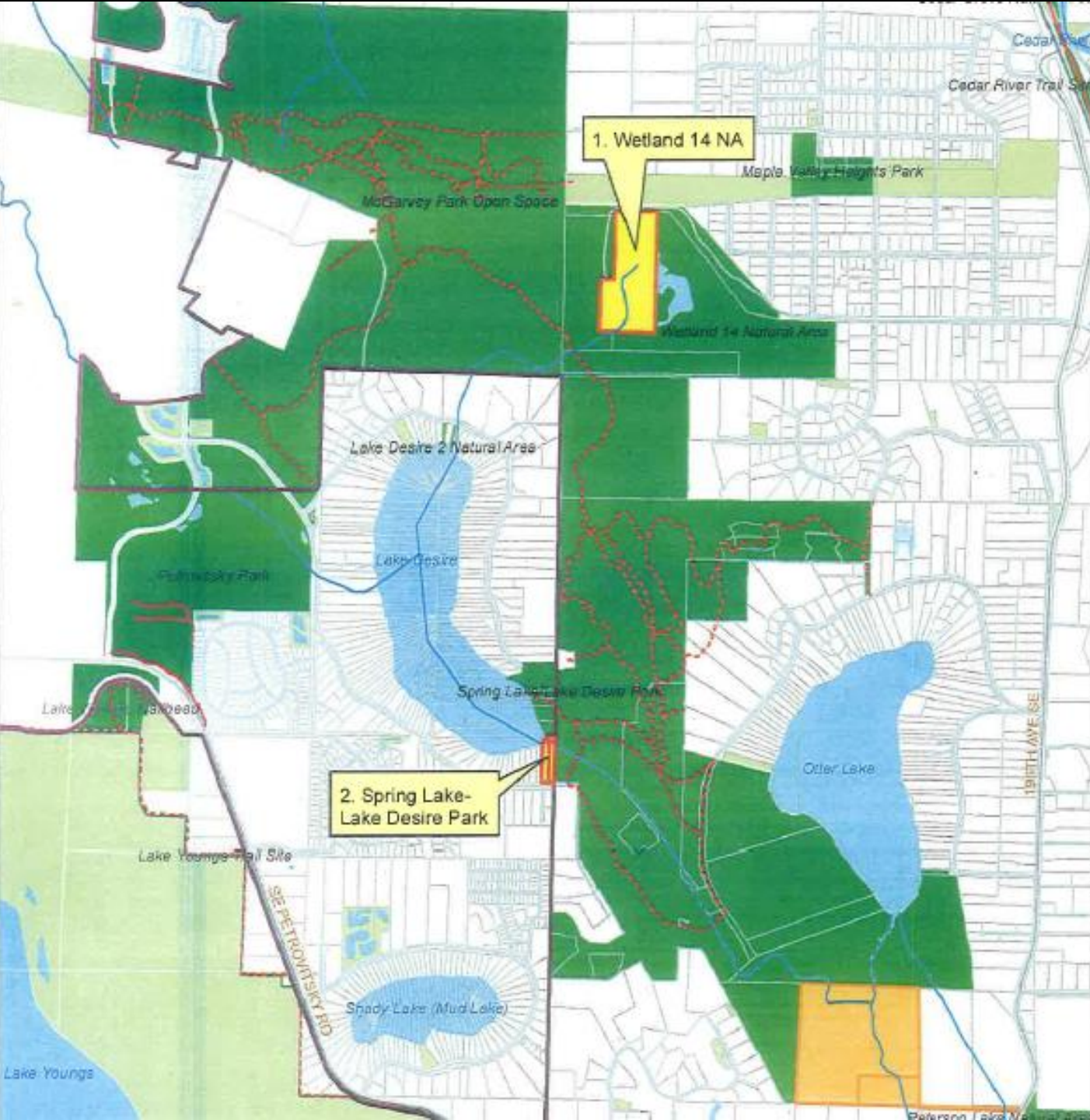
Paradise Lake N.A./ (Upper Bear Creek)
– *King County*

WETLAND 14/SPRING LAKE-LAKE DESIRE ADDITIONS

2017 CFT-PL Application

Vicinity Map

("1. & 2." designations do not reflect priority order)



- Priority Parcels
- Past Priority
- Paved Trail
- Soft Surface Trail
- Parcel
- King County Parks
- City Parks
- Publicly Owned Lands
- Streams and Rivers
- Incorporated City
- Urban Growth Boundary



King County
Department of
Natural Resources and Parks
Parks and Recreation Division

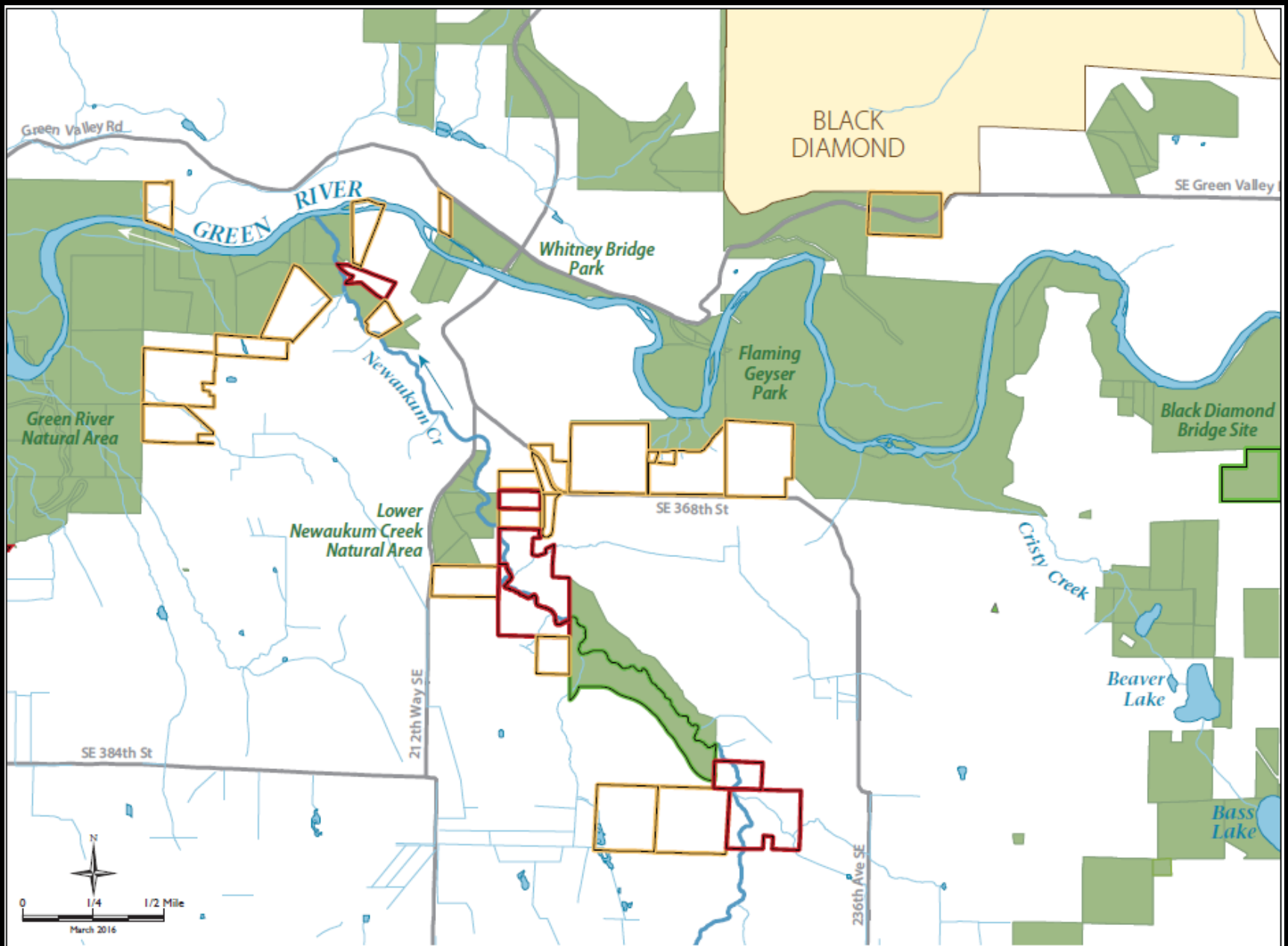
12/28/2015

The information included on this map has been compiled by King County staff from a variety of sources and is subject to change without notice. King County makes no representations or warranties, express or implied, as to accuracy, completeness, timeliness, or title to the use of such information. This document is not intended for use as a survey product. King County shall not be liable for any general, special, indirect, incidental, or consequential damages including, but not limited to, lost revenues or lost profits resulting from the use or misuse of the information contained on this map. Any sale of this map or information on this map is prohibited except by written permission of King County.



Wetland 14/Spring Lake-Lake Desire Add.
- *King County*

Green River Watershed

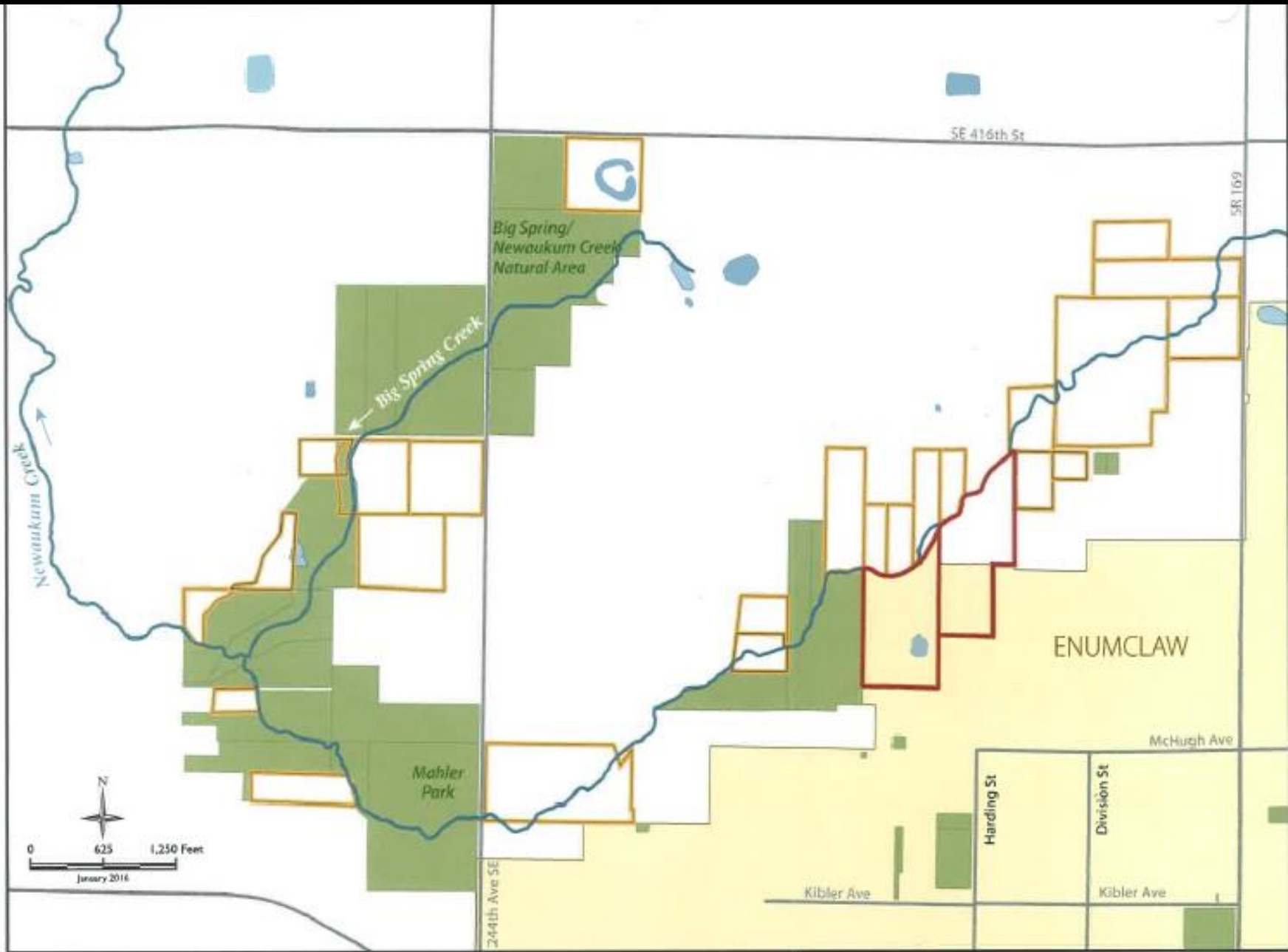


Lower Newaukum Creek Preservation Strategy

- Parcels Targeted for Protection
- Potential Future Acquisition
- Public Land or conservation easement
- Acquisition in Negotiations



Lower Newaukum Creek – *King County*



Middle Newaukum Creek/Big Spring Creek Strategy

- Parcels Targeted for Protection
- Potential Future Acquisition
- Public Land or Conservation Easement.





Middle Newakum Creek / Big Spring Creek
- *King County*

Vashon / Maury Islands

The information indicated on this map has been compiled by King County staff from a variety of sources and is subject to change without notice. King County makes no representations or warranties, express or implied, as to accuracy, completeness, timeliness, or rights to the use of such information. This document is not intended for use as a survey product. King County shall not be liable for any general, special, indirect, incidental, or consequential damages including, but not limited to, lost revenues or lost profits resulting from the use or misuse of the information contained on this map. Any sale of this map or information on this map is prohibited except by written permission of King County.



Big Beach Parcels, Vashon Island Site Map

-  Target Parcel
-  2017 Priority Parcels
-  Publicly Owned Lands



King County
 Map produced by
 King County eGov



Big Beach (Vashon) – King County

Misty Isle Farm

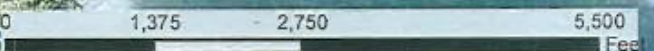
Paradise Ridge Park

Paradise Valley

Christiansen Pond

Parcel 9071

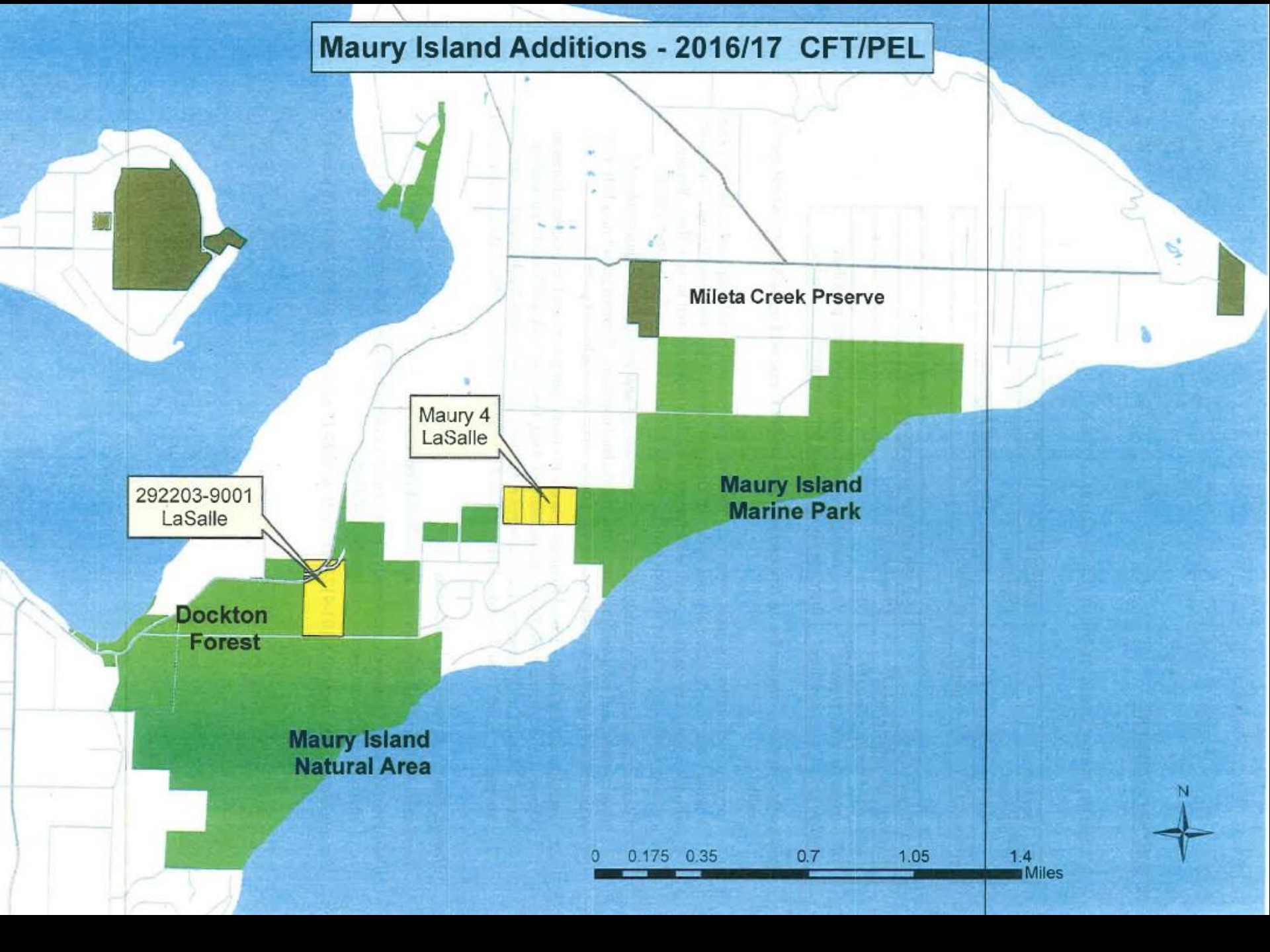
KC Roads
Burton Pit





Burton Pit – *King County*

Maury Island Additions - 2016/17 CFT/PEL





Maury Island Additions – Community Trails
- *King County*



Point Parcels, Maury Island Site Map

 **King County**
 Map produced by
 King County eGov



- Target Parcel
- 2017 Priority Parcels
- Publicly Owned Lands







Spring Beach Parcels, Vashon Island Site Map

-  Target Parcel
-  2017 Priority Parcels
-  Publicly Owned Lands
-  Camp Sealth Conservation Easement

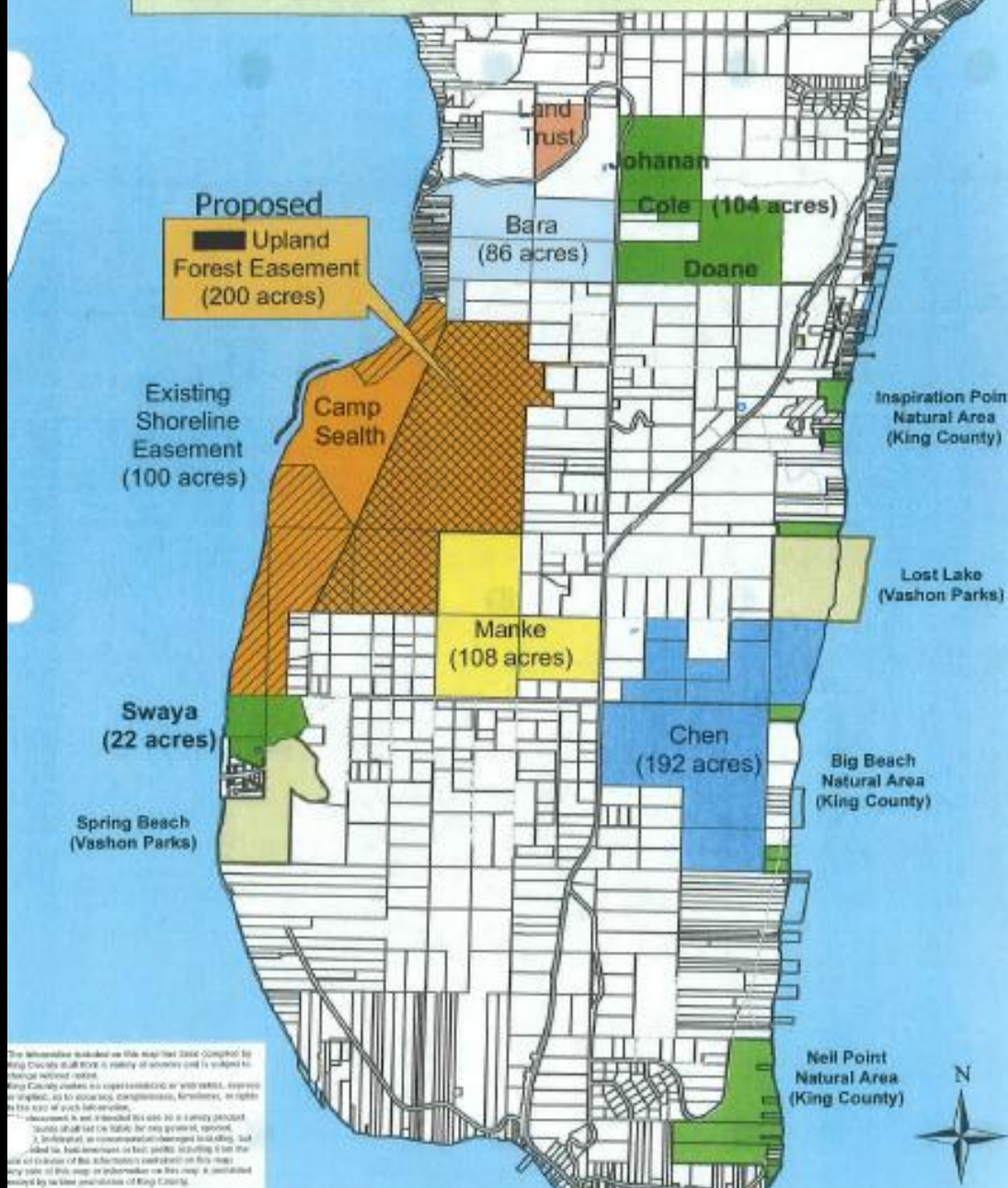
King County
 Map produced by
 King County eGov





Spring Beach – *King County*

Vashon Island - Southern Forest Preserve



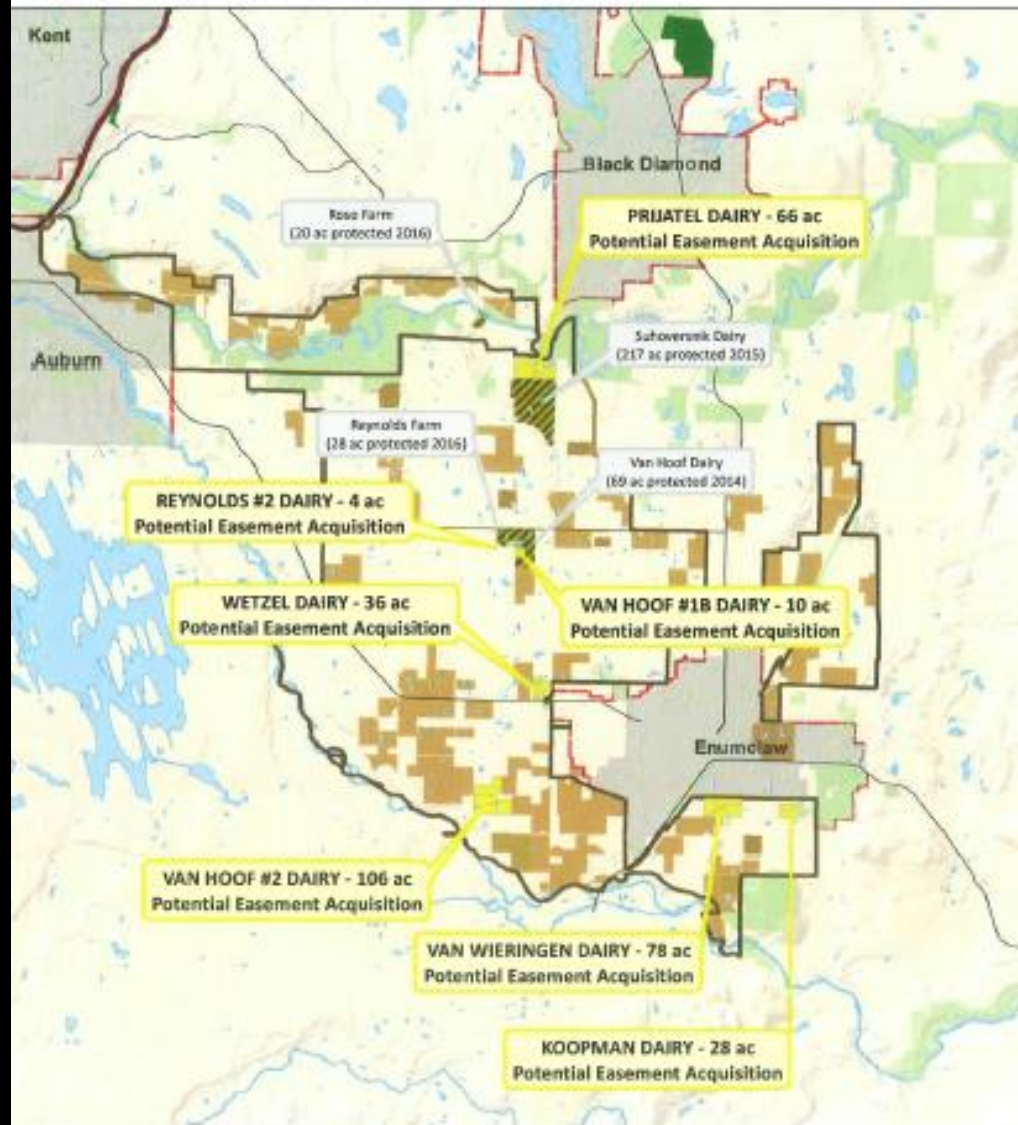
The information included on this map was compiled by King County GIS and is a liability of accuracy and is subject to change without notice. King County makes no representation or warranty, express or implied, as to accuracy, completeness, timeliness, or rights in the data or any information. This information is not intended for use as a survey document. Users should not be liable for any errors, omissions, or damages. A disclaimer is not intended for use as a survey document. Any use of this map or information on this map is prohibited except by the express permission of King County.



Vashon South – Upland Forests - *King County*

King County Farmland/TDR

Protecting King County's Last Remaining Dairies (CFT Application - March 2016)



LEGEND

- Dairies Pending TDR Easements
 - Non-Farm TDR Easements
 - TDR Protected Farms
 - Protected Farmland
 - Public Lands
 - Urban Growth Area Boundary
 - Incorporated Cities
- 

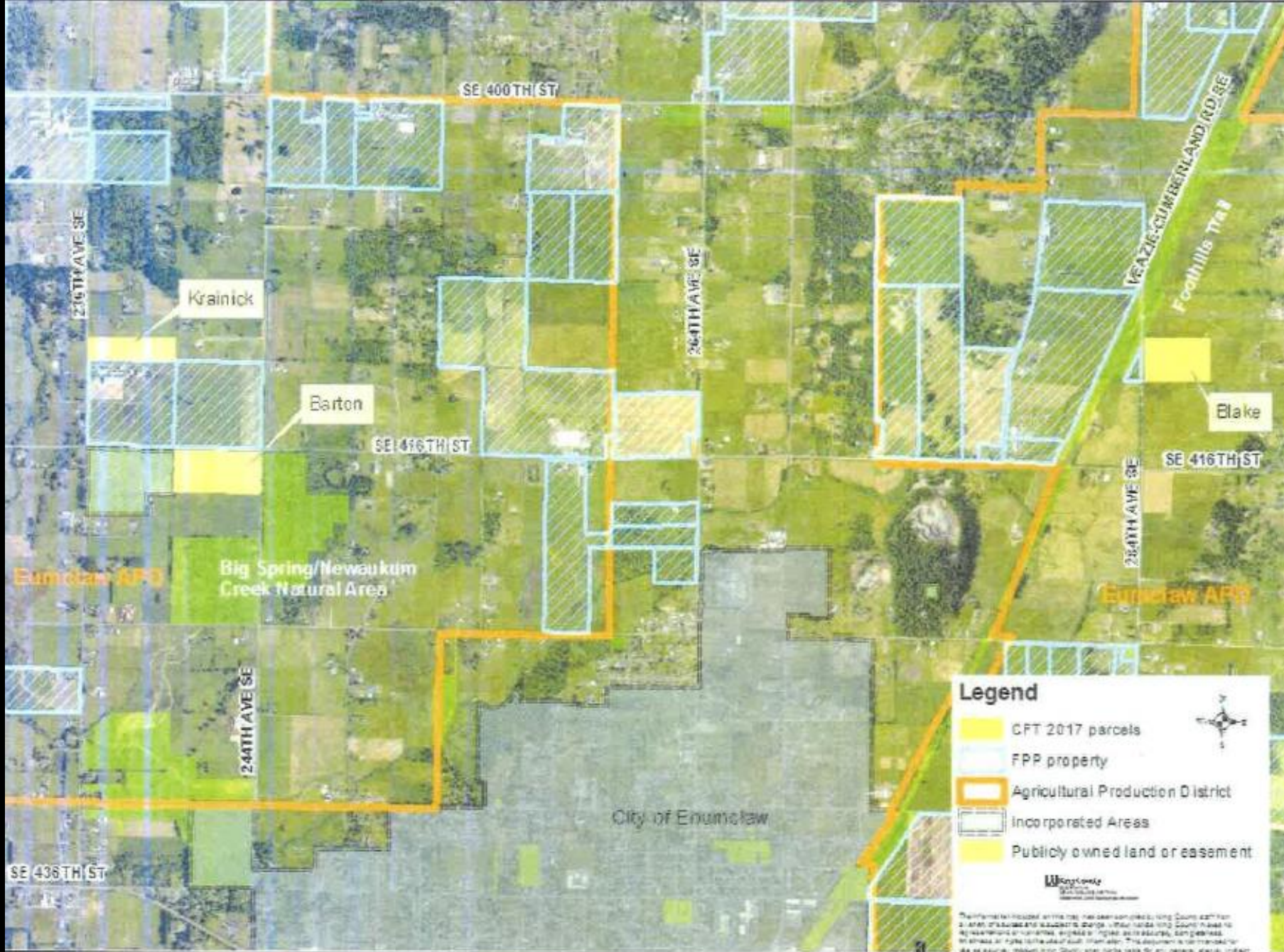




Dairies in King County
– *King County*



Dairies in King County
– *King County*



Legend

- CFT 2017 parcels
- FPP property
- Agricultural Production District
- Incorporated Area
- Publicly owned land or easement



This information is provided as a public service. It is not intended to constitute an offer of insurance or any other financial product. The information is provided for informational purposes only and should not be used as a basis for any investment decision. Please consult your financial advisor for more information. © 2017 Wagon County, WA. All rights reserved.

CFT 2017 - Farmland parcels



Farmland Easements in Enumclaw APD
- *King County*

City of Woodinville

NE 171ST ST

Zante
(102605-9030)

Sunrise Services
(152605-9102)

City of Woodinville

Gold Creek
Park

Sammamish
APD

140TH PLANE

Tolt River Pipeline

WOODINVILLE-REDMOND RD NE

Sammamish Rd

Legend

-  CFT 2017 parcels
-  FPP property
-  Agricultural Production District
-  Incorporated Areas
-  Publicly owned land or easement



The information included on this map has been compiled, King County, Washington, and its agencies and is subject to change. King County and its agencies do not warrant the accuracy or completeness of the information. This document is for informational purposes only and does not constitute any legal advice. Users should consult with a qualified professional for legal advice. King County and its agencies do not assume any liability for any damages, including consequential damages, resulting from the use of this information. This map is provided as a public service. Other names may be used on this map.



CFT 2017 - Sammamish APD parcels



Farmland Easements in Sammamish APD
- *King County*



Farmland Easements in Enumclaw APD –
King County

S 277TH ST

RAMP

68TH AVE S

3522049003

3522049015

3522049052

3522049051

3522049050

WEST VALLEY HWY, S

S 285TH ST

S 287TH ST

Legend

Agricultural Production District

FPP property

Parcel boundaries

This information is based on data that has been compiled by King County from various sources and is subject to change without notice. King County makes no representations or warranties, express or implied, as to accuracy, completeness, timeliness, or utility in the use of such information. This document is not intended to constitute an offer of insurance or any other financial product. King County does not provide insurance or any other financial product. King County does not provide insurance or any other financial product. King County does not provide insurance or any other financial product. King County does not provide insurance or any other financial product.



Department of
Metals, Resources and Parks
Water and Land Resources Division

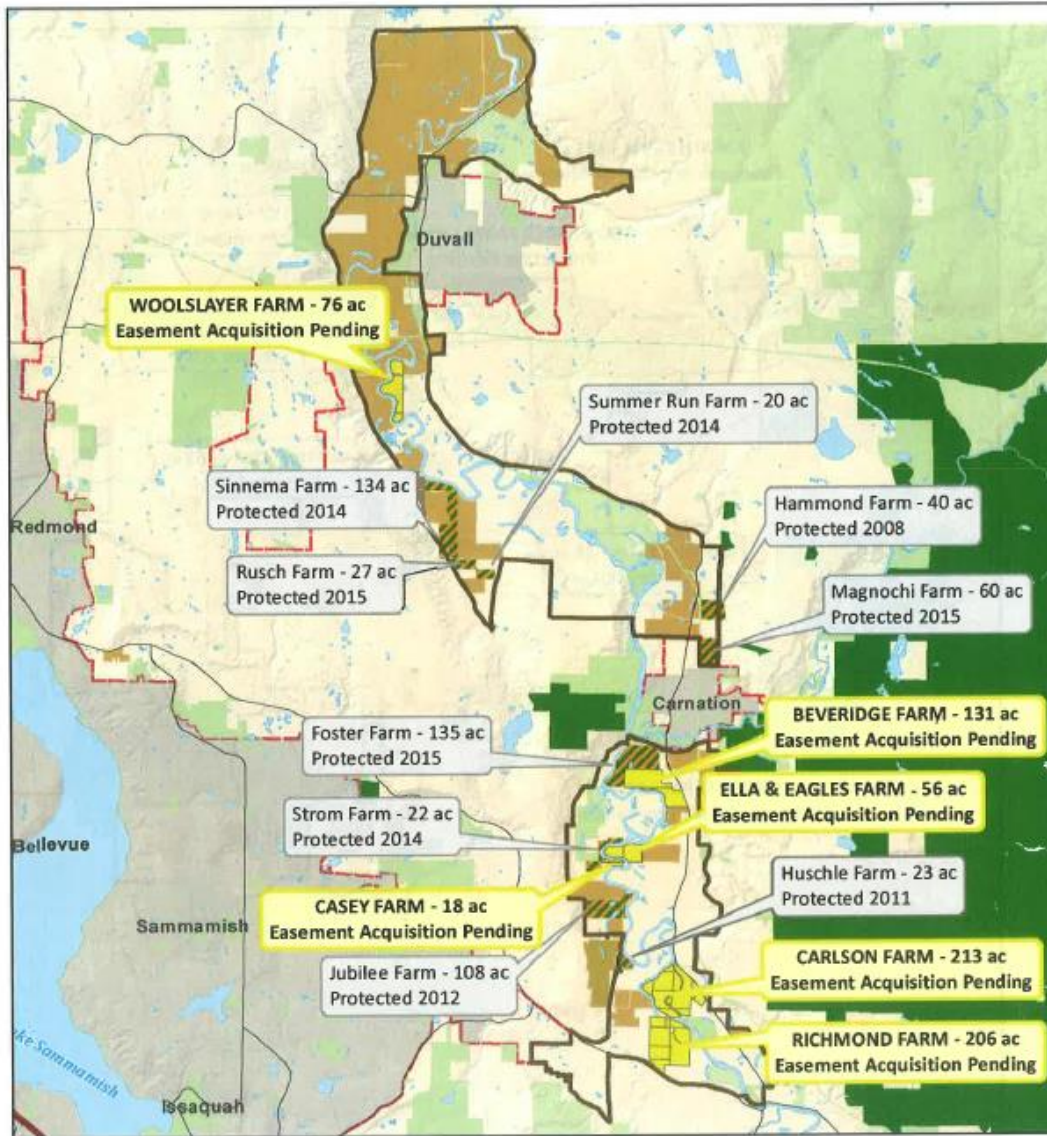


CFT 2017 Application – Lower Green APD parcels



Farmland Acquisition in Lower Green
- *King County*

Protecting Farmlands through Regional TDR (Map 1) (CFT Application - March 2016)



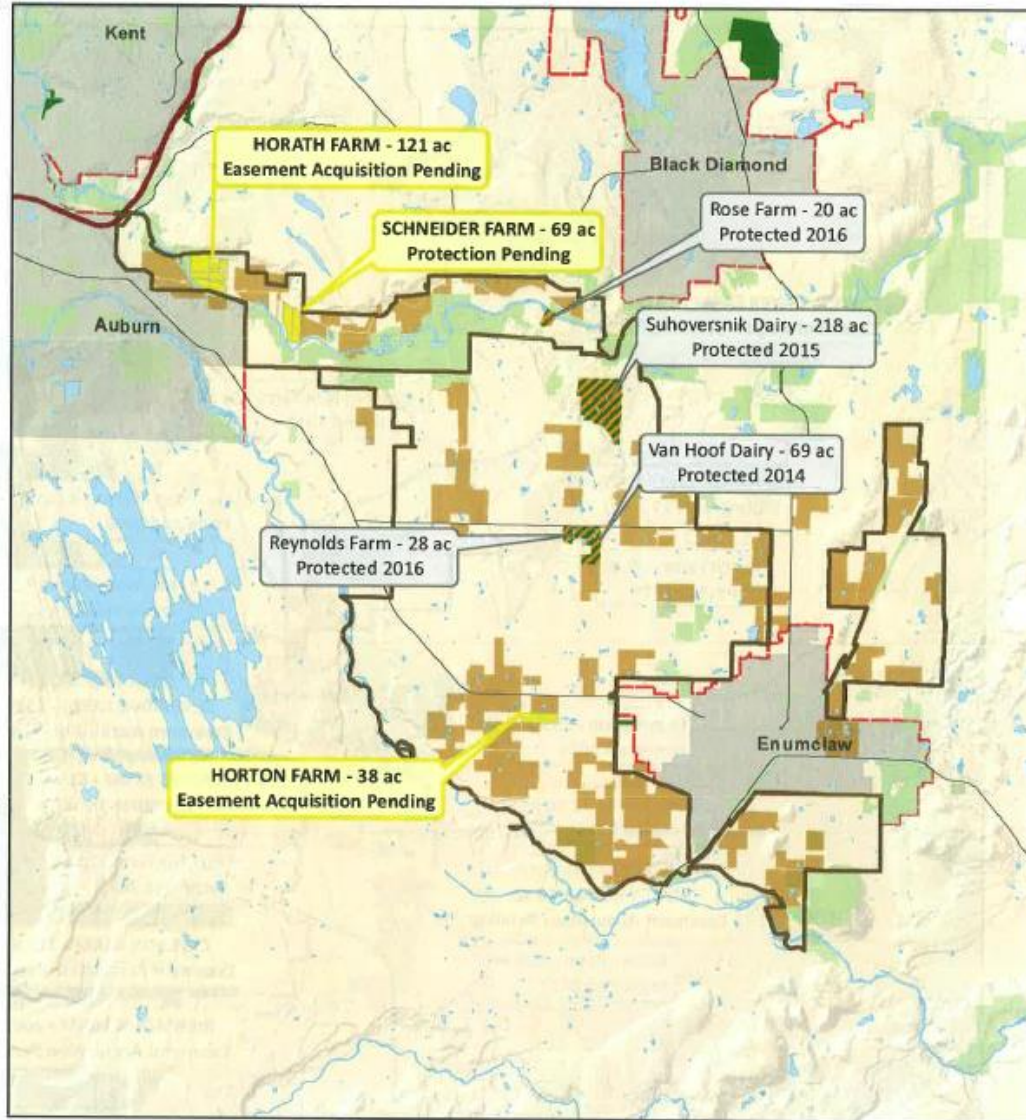
LEGEND

- Farms Pending TDR Protection
- Non-Farm TDR Easements
- TDR-protected Farms
- Urban Growth Area Boundary
- Protected Farmland
- Incorporated Cities



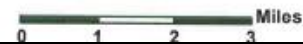
Miles

Protecting Farmlands through Regional TDR (Map 2) (CFT Application - March 2016)



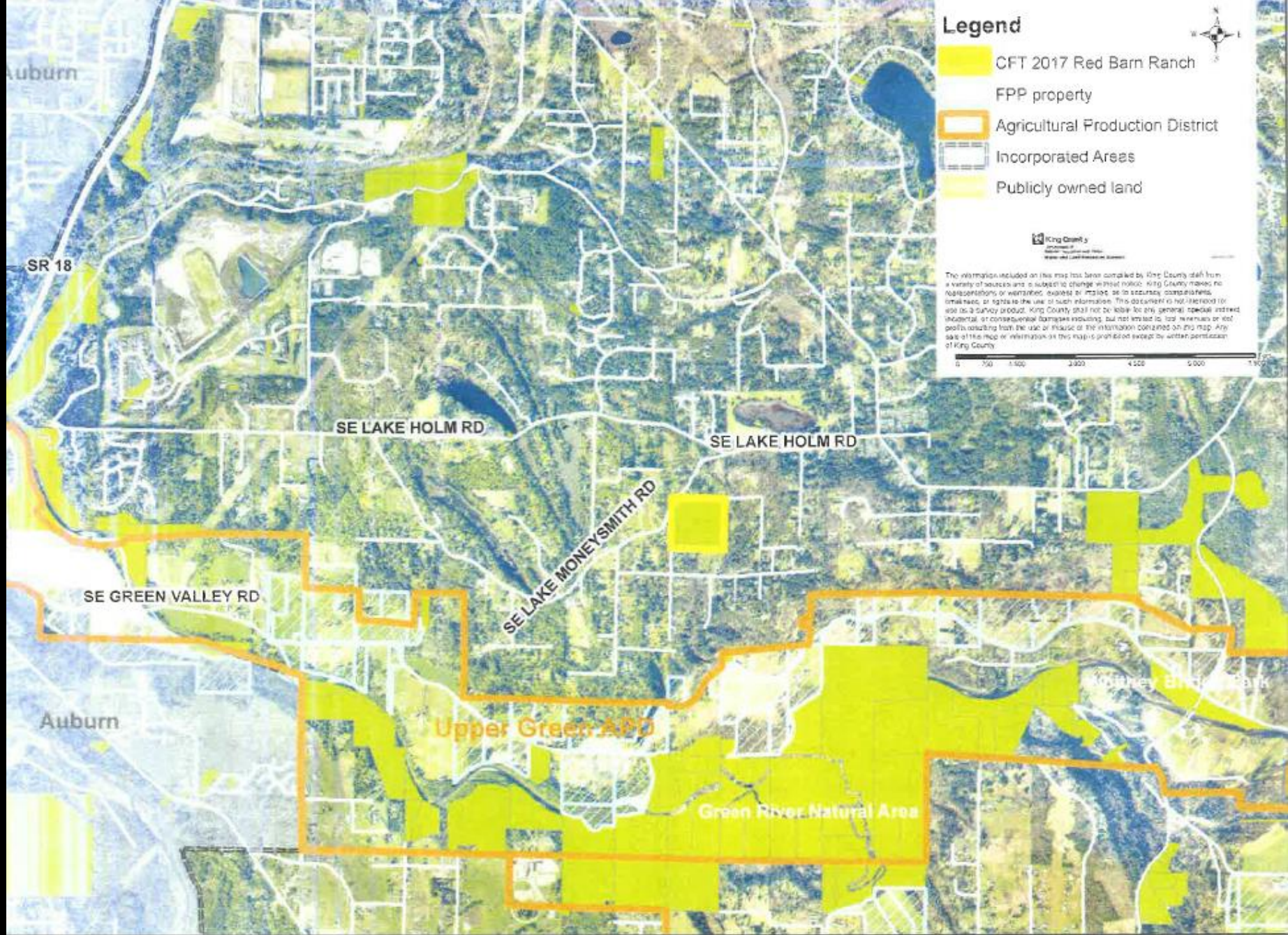
LEGEND

- Farms Pending TDR Protection
- Non-Farm TDR Easements
- TDR-protected Farms
- Protected Farmland
- Urban Growth Area Boundary
- Incorporated Cities
- Public Lands



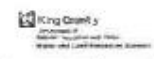


Protecting Farmland with Regional TDR
- *King County*

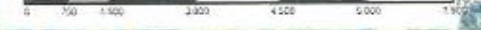


Legend

- CFT 2017 Red Barn Ranch
- FPP property
- Agricultural Production District
- Incorporated Areas
- Publicly owned land



The information included on this map has been compiled by King County staff from a variety of sources and is subject to change without notice. King County makes no representations or warranties, explicit or implied, as to accuracy, completeness, timeliness, or fitness for the use of such information. This document is not intended for use as a survey product. King County shall not be liable for any general, special, indirect, incidental, or consequential damages resulting, but not limited to, lost revenues or lost profits, resulting from the use or misuse of the information contained on this map. Any sale of this map or information on this map is prohibited except by written permission of King County.



CFT 2017 - Red Barn Ranch



Red Barn Ranch – *King County*

The End