

Attachment G

2022 Landfill Monitoring Results

Compliance Gas Monitoring Probes

Interior Gas Probes

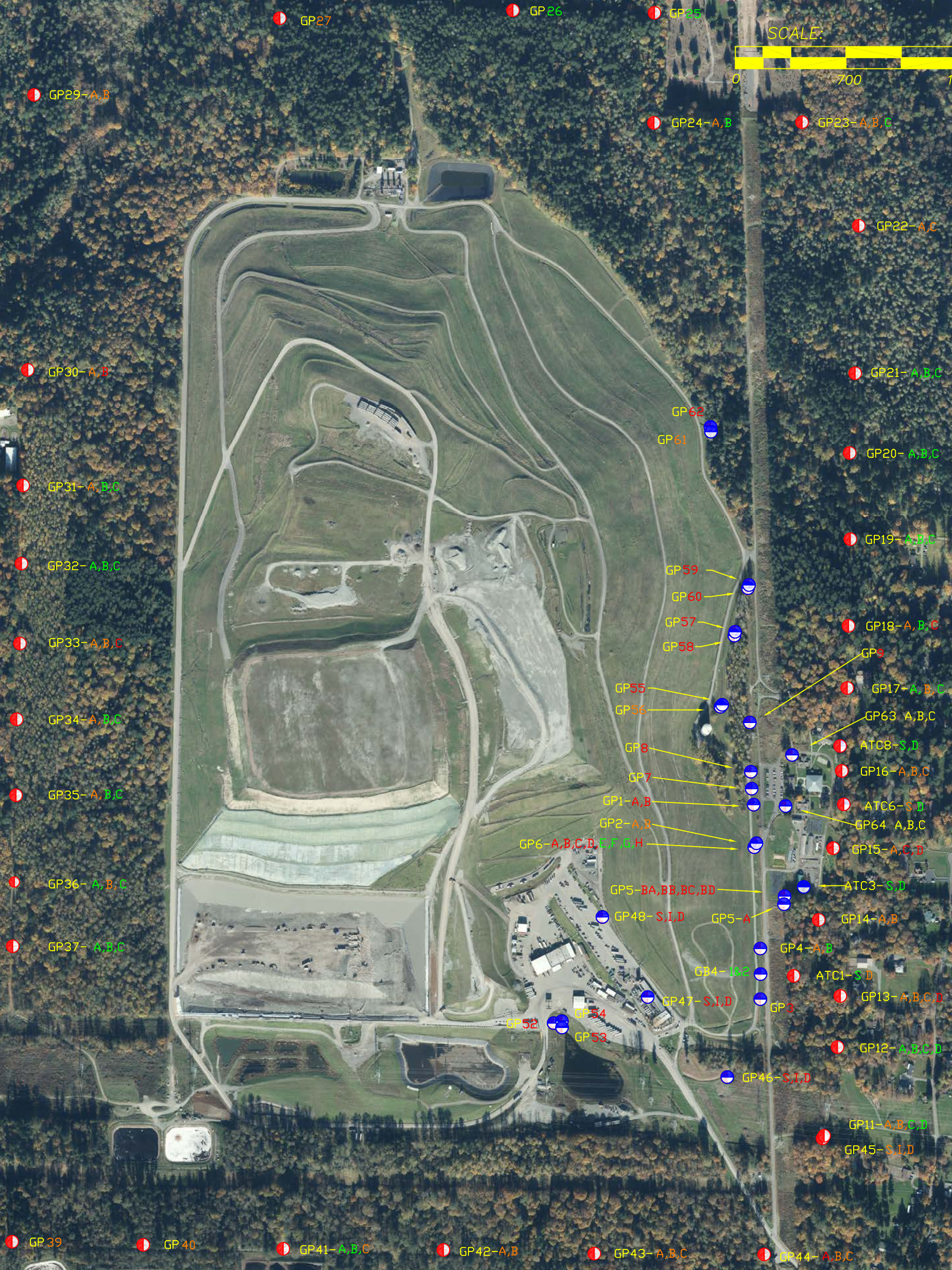
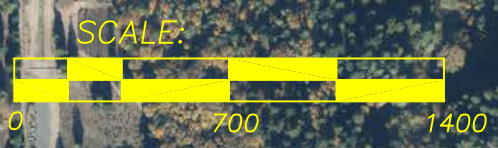
Migration Monitoring Probes

Landfill Structure Monitoring

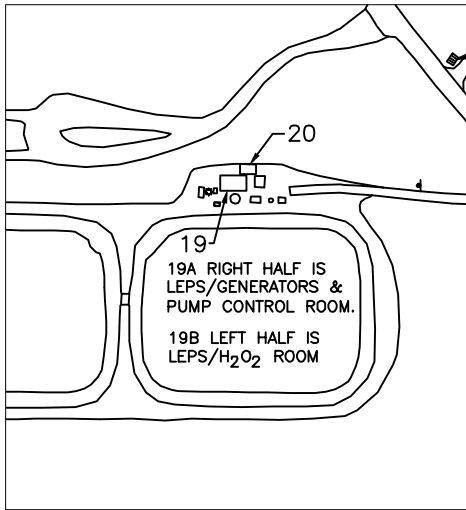
Passage Point Monitoring



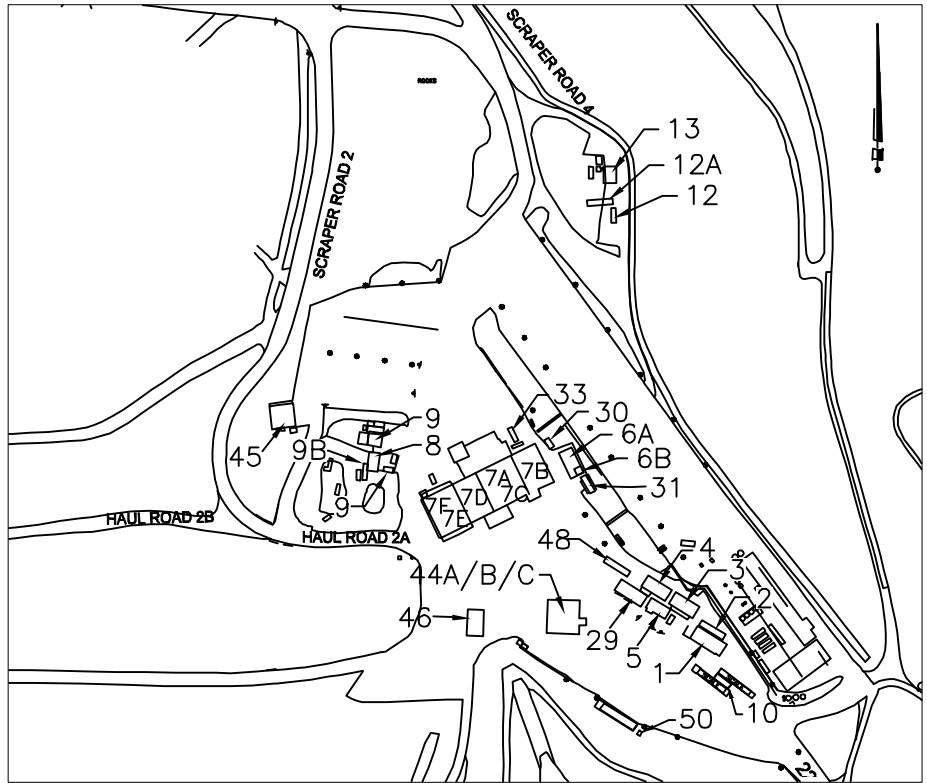
● INTERIOR LFG MONITORING PROBES
● MONITORING PROBES AT PROPERTY BOUNDARY



Aeration Ponds

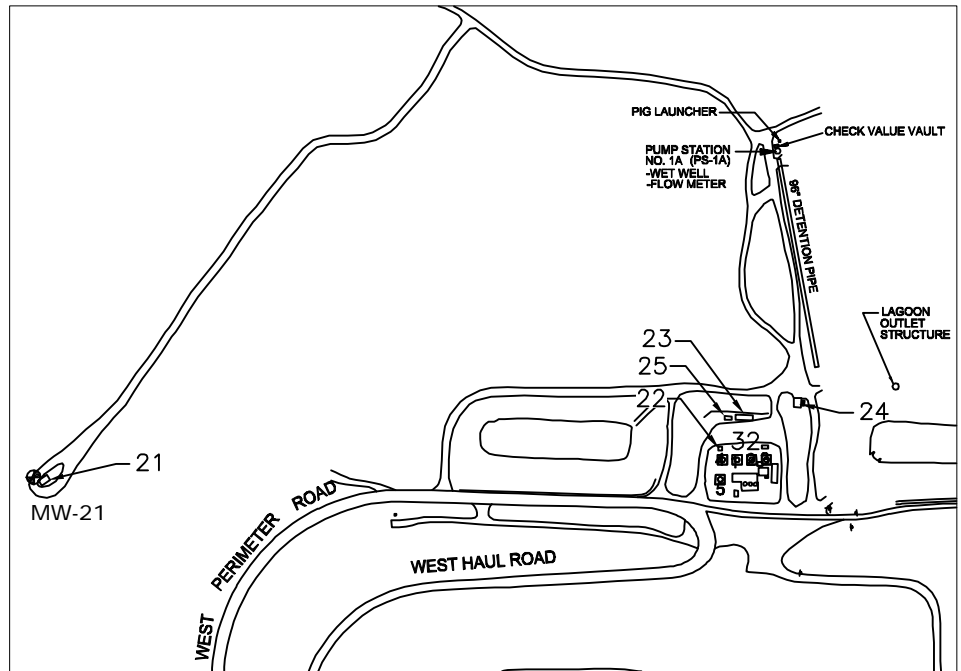


Shop and Office Buildings



BUILDING NO.	EO Description
1	Front Office
2	Conference Room
3	Vacant (Old Payroll Trailer)
4	Engineering Trailer
5	Lunch Room Trailer
6A	Dry Storage
6B	Electrician Office
7	Maintenance Shop
7A	Shop Office
7B	Stores—Shipping/Receiving
7C	Trailer Bay and Pit Area
7D	Tire Shop and Trailer Bay
7E	East Weld Shop
7F	West Weld Shop
8	Carpenter's Shop
9	Wastewater Shed
9B	Carpenter Storage
10	Scale House
11	New Eqpt. Operator's Trailer
12	EQ. Operator's Trailer (Old)
13	WW Compressor
16	Generator (Not Shown)
19	LEPS (P.S. #5)
19A	LEPS Pump Control Room
19B	LEPS/H ₂ O ₂ room
20	LEPS, Elec Panels
21	Storage (Old PS1)
22	Storage/N.Flare
23	LFGAS Office
24	NE Generator Bldg.
25	Storage BLDG. @ N.F.S.
29	OPS Administration Office
30	Women Brk Rm.
31	Landfill Leads/Accts Payable
32	North Flare Station
33	SPOC trailer
44A	Truck Wash West Restroom
44B	Truck Wash East Restroom
44C	Pressure Wash Room
45	Heavy Equipment Canopy
46	Fuel Island
48	Operations Planning
49	CCG Faster (Not Shown)
50	Chlorine Shed

North Flare Station



CEDAR HILLS REGIONAL LANDFILL BUILDING NUMBERS

Source: KCSWD, February 2012



King County

Landfill Gas Structure Monitoring Location

Environmental Monitoring Sampling and Analysis Plan
Cedar Hills Regional Landfill, King County, Washington

DATE:	February 2012
DESIGNED BY:	
DRAWN BY:	
REVISED BY:	

PROJECT NO.

FIGURE NO.

First Quarter 2022

Landfill Gas Monitoring Data

Compliance Probes

CEDAR HILLS REGIONAL LANDFILL

Landfill Gas Compliance Probes

Jan 2022 Monitoring Data

Location ID	Date/Time	CH4 (% Vol)	CO2 % Vol	O2 % Vol	Lower Explosive Limit (% LEL)	Static Pressure (in INWC)	Comments
ATC-1D	1/13/2022 15:42	0.0	0.1	20.5	0.0	0.02	
ATC-1S	--	--	--	--	--	--	
ATC-6D	1/13/2022 16:41	0.0	0.8	3.2	0.0	0.52	
ATC-6S	1/13/2022 16:40	0.0	0.3	19.7	0.0	-3.96	
ATC-8D	--	--	--	--	--	--	
ATC-8S	--	--	--	--	--	--	
GP-11A	1/13/2022 15:31	0.0	0.1	20.7	0	0.07	
GP-11B	1/13/2022 15:32	0.0	0.1	20.8	0	-0.7	
GP-11C	1/13/2022 15:33	0.0	0.1	20.8	0	-0.74	
GP-11D	1/13/2022 15:34	0.0	0.1	20.7	0	-0.08	
GP-12A	1/13/2022 15:53	0.0	0.1	21.0	0	-0.56	
GP-12B	1/13/2022 15:54	0.0	0.1	21.0	0	0.01	
GP-12C	1/13/2022 15:55	0.0	0.1	17.0	0	-18.05	
GP-12D	1/13/2022 15:56	0.0	0.6	6.2	0	-2.53	
GP-13A	1/13/2022 15:46	0.0	0.1	20.8	0	0.38	
GP-13B	1/13/2022 15:47	0.0	0.1	20.7	0	-2.65	
GP-13C	1/13/2022 15:48	0.0	0.1	20.9	0	0.02	
GP-13D	1/13/2022 15:49	0.0	0.1	20.9	0	-1.78	
GP-14A	1/13/2022 16:02	0.0	0.1	20.4	0	-0.58	
GP-14B	1/13/2022 16:03	0.0	0.1	21.0	0	-0.63	
GP-15A	1/13/2022 16:51	0.0	0.2	20.5	0	-1.72	
GP-15C	1/13/2022 16:53	0.0	0.7	17.3	0	-0.01	
GP-15D	1/13/2022 16:54	0.0	0.1	20.5	0	-1.25	
GP-16A	1/13/2022 16:35	0.0	0.1	20.6	0	0.04	
GP-16B	1/13/2022 16:36	0.0	0.1	20.5	0	-0.82	
GP-16C	1/13/2022 16:37	0.0	0.1	20.6	0	-2.17	
GP-17A	1/13/2022 17:11	0.0	0.1	19.2	0	0.01	
GP-17B	1/13/2022 17:13	0.0	0.8	16.4	0	0	
GP-17C	1/13/2022 17:14	0.0	0.1	20.5	0	-2.22	
GP-18A	1/13/2022 17:17	0.0	0.1	20.7	0	0.05	
GP-18B	1/13/2022 17:18	0.0	0.3	14.7	0	0.13	
GP-18C	1/13/2022 17:19	0.0	0.1	19.9	0	-2.34	
GP-19A	1/13/2022 17:21	0.0	0.1	20.5	0	0.41	
GP-19B	1/13/2022 17:22	0.0	0.7	15.8	0	0.67	
GP-19C	1/13/2022 17:23	0.0	0.1	20.6	0	-0.11	
GP-20A	1/13/2022 17:26	0.0	0.1	20.7	0	-0.54	
GP-20B	1/13/2022 17:26	0.0	0.1	20.5	0	-0.01	
GP-20C	1/13/2022 17:27	0.0	0.2	20.0	0	0.38	
GP-21A	1/13/2022 17:29	0.0	0.2	18.2	0	0.02	
GP-21B	1/13/2022 17:30	0.0	0.1	10.2	0	0.04	
GP-21C	1/13/2022 17:31	0.0	1.1	15.7	0	-0.01	
GP-22A	1/13/2022 17:34	0.0	0.5	20.4	0	-2.79	
GP-22C	1/13/2022 17:35	0.0	1.2	4.8	0	-1.9	

CEDAR HILLS REGIONAL LANDFILL

Landfill Gas Compliance Probes

Jan 2022 Monitoring Data

Location ID	Date/Time	CH4 (% Vol)	CO2 % Vol	O2 % Vol	Lower Explosive Limit (% LEL)	Static Pressure (in INWC)	Comments
GP-23A	1/13/2022 17:38	0.0	0.1	20.6	0	-0.02	
GP-23B	1/13/2022 17:39	0.0	0.1	20.8	0	-0.06	
GP-23C	1/13/2022 17:40	0.0	0.1	20.9	0	-0.12	
GP-24A	1/13/2022 17:43	0.0	0.1	20.9	0	-0.04	
GP-24B	1/13/2022 17:44	0.0	4.0	6.7	0	1.6	
GP-25	1/13/2022 17:47	0.0	0.5	19.0	0	1.78	
GP-26	1/13/2022 17:50	0.0	0.9	16.4	0	-0.06	
GP-27	1/13/2022 17:52	0.0	6.8	9.5	0	-0.03	
GP-29A	1/13/2022 17:56	0.0	4.2	12.0	0	0.03	
GP-29B	1/13/2022 17:57	0.0	0.2	20.6	0	-0.21	
GP-30A	1/13/2022 10:33	0.0	0.1	20.7	0	0.15	
GP-30B	1/13/2022 10:36	0.0	0.2	20.8	0	-1.2	
GP-31A	1/13/2022 10:40	0.0	0.8	19.6	0	0.24	
GP-31B	1/13/2022 10:42	0.0	0.4	15.3	0	7.53	
GP-31C	1/13/2022 10:43	0.0	0.1	20.6	0	-1.85	
GP-32A	1/13/2022 10:46	0.0	0.8	19.2	0	0.04	
GP-32B	1/13/2022 10:47	0.0	0.3	20.5	0	-0.15	
GP-32C	1/13/2022 10:48	0.0	0.4	20.5	0	0.01	
GP-33A	1/13/2022 10:50	0.0	0.4	20.5	0	0.05	
GP-33B	1/13/2022 10:51	0.0	0.1	20.9	0	-0.03	
GP-33C	1/13/2022 10:52	0.0	0.1	21.0	0	-1.4	
GP-34A	1/13/2022 10:57	0.0	0.1	21.0	0	4.17	
GP-34B	1/13/2022 10:58	0.0	0.2	20.7	0	-0.15	
GP-34C	1/13/2022 10:58	0.0	0.1	21.1	0	-0.46	
GP-35A	1/13/2022 11:03	0.0	1.8	19.7	0	1.15	
GP-35B	1/13/2022 11:04	0.0	0.4	3.1	0	0.99	
GP-35C	1/13/2022 11:05	0.0	0.1	20.5	0	-0.01	
GP-36A	1/13/2022 11:08	0.0	0.4	2.6	0	0.04	
GP-36B	1/13/2022 11:10	0.0	0.2	17.5	0	1.01	
GP-36C	1/13/2022 11:11	0.0	0.4	19.2	0	-0.41	
GP-37A	1/13/2022 11:15	0.0	0.5	12.3	0	0.09	
GP-37B	1/13/2022 11:16	0.0	0.1	17.9	0	-0.02	
GP-37C	1/13/2022 11:17	0.0	0.5	3.8	0	-0.03	
GP-39	1/13/2022 14:42	0.0	0.6	18.8	0	-0.05	
GP-40	1/13/2022 14:45	0.0	0.1	18.9	0	-0.9	
GP-41A	1/13/2022 14:48	0.0	0.1	19.8	0	0.04	
GP-41B	1/13/2022 14:49	0.0	0.1	19.8	0	0.19	
GP-41C	1/13/2022 14:50	0.0	0.2	19.2	0	0.01	
GP-42A	1/13/2022 14:55	0.0	0.2	20.0	0	0.05	
GP-42B	1/13/2022 14:56	0.0	0.3	19.8	0	-0.95	
GP-43A	1/13/2022 14:59	0.0	0.4	18.6	0	-0.1	
GP-43B	1/13/2022 15:00	0.0	0.3	18.6	0	-5.32	
GP-43C	1/13/2022 15:01	0.0	0.2	19.2	0	-11	

CEDAR HILLS REGIONAL LANDFILL
Landfill Gas Compliance Probes
Jan 2022 Monitoring Data

Location ID	Date/Time	CH4 (% Vol)	CO2 % Vol	O2 % Vol	Lower Explosive Limit (% LEL)	Static Pressure (in INWC)	Comments
GP-44A	1/13/2022 15:06	0.0	0.7	20.1	0	-1.08	
GP-44B	1/13/2022 15:07	0.0	1.0	9.3	0	19.7	
GP-44C	1/13/2022 15:08	0.0	0.1	20.3	0	0.04	
GP-45D	1/13/2022 15:29	0.0	0.1	20.7	0	-1	
GP-45I	1/13/2022 15:28	0.0	0.1	20.7	0	0	
GP-45S	1/13/2022 15:27	0.0	0.1	20.7	0	0.04	

CEDAR HILLS REGIONAL LANDFILL
Landfill Gas Compliance Probes
February 2022 Monitoring Data

Location ID	Date/Time	CH4 (% Vol)	CO2 % Vol	O2 % Vol	Lower Explosive Limit (% LEL)	Static Pressure (in INWC)	Comments
ATC-1D	2/8/2022 10:58	0.0	0.1	20.6	0.0	-0.17	
ATC-1S	2/8/2022 10:57	0.0	0.1	20.5	0.0	-13.18	
ATC-6D	2/8/2022 12:09	0.0	0.8	2.2	0.0	-0.02	
ATC-6S	2/8/2022 12:08	0.0	0.1	20.7	0.0	-8.07	
ATC-8D	2/8/2022 12:00	0.0	1.8	17.0	0.0	-0.01	
ATC-8S	2/8/2022 11:59	0.0	0.3	19.6	0.0	0.01	
GP-11A	2/8/2022 10:41	0.0	0.1	20.2	0.0	0.01	
GP-11B	2/8/2022 10:42	0.0	0.1	20.2	0.0	-0.84	
GP-11C	2/8/2022 10:44	0.0	0.1	20.2	0.0	-0.67	
GP-11D	2/8/2022 10:45	0.0	0.1	20.2	0.0	0.02	
GP-12A	2/8/2022 11:04	0.0	0.1	20.7	0.0	0.36	
GP-12B	2/8/2022 11:06	0.0	0.1	20.8	0.0	-0.19	
GP-12C	2/8/2022 11:07	0.0	0.1	18.3	0.0	-17.16	
GP-12D	2/8/2022 11:08	0.0	0.5	6.0	0.0	-3.64	
GP-13A	2/8/2022 11:12	0.0	0.1	20.7	0.0	0.02	
GP-13B	2/8/2022 11:13	0.0	0.1	20.7	0.0	0.03	
GP-13C	2/8/2022 11:14	0.0	0.1	20.9	0.0	-0.04	
GP-13D	2/8/2022 11:16	0.0	0.1	20.9	0.0	-2.69	
GP-14A	2/8/2022 11:20	0.0	0.1	20.9	0.0	-0.9	
GP-14B	2/8/2022 11:21	0.0	0.1	21.0	0.0	-1.07	
GP-15A	2/8/2022 11:44	0.0	0.1	20.8	0.0	-0.05	
GP-15C	2/8/2022 11:46	0.0	0.7	17.3	0.0	0.12	
GP-15D	2/8/2022 11:47	0.0	0.1	20.8	0.0	-0.43	
GP-16A	2/8/2022 12:02	0.0	0.1	20.6	0.0	0	
GP-16B	2/8/2022 12:04	0.0	0.1	20.7	0.0	-1.32	
GP-16C	2/8/2022 12:05	0.0	0.1	20.7	0.0	-2.66	
GP-17A	2/8/2022 13:34	0.0	0.2	19.6	0.0	-16.89	
GP-17B	2/8/2022 13:35	0.0	0.8	16.0	0.0	-0.02	
GP-17C	2/8/2022 13:36	0.0	0.1	20.1	0.0	-2.24	
GP-18A	2/8/2022 13:40	0.0	0.3	19.9	0.0	-6.52	
GP-18B	2/8/2022 13:42	0.0	0.4	13.5	0.0	0.16	
GP-18C	2/8/2022 13:43	0.0	0.1	20.0	0.0	-2.45	
GP-19A	2/8/2022 13:47	0.0	0.1	20.2	0.0	-1.98	
GP-19B	2/8/2022 13:48	0.0	0.7	15.1	0.0	-0.02	
GP-19C	2/8/2022 13:49	0.0	0.1	20.2	0.0	-0.03	
GP-20A	2/8/2022 13:55	0.0	0.1	20.3	0.0	0	
GP-20B	2/8/2022 13:56	0.0	0.3	19.1	0.0	-0.05	
GP-20C	2/8/2022 13:58	0.0	0.2	5.6	0.0	1.19	
GP-21A	2/8/2022 14:04	0.0	0.1	19.8	0.0	0.02	

CEDAR HILLS REGIONAL LANDFILL
Landfill Gas Compliance Probes
February 2022 Monitoring Data

Location ID	Date/Time	CH4 (% Vol)	CO2 % Vol	O2 % Vol	Lower Explosive Limit (% LEL)	Static Pressure (in INWC)	Comments
GP-21B	2/8/2022 14:05	0.0	0.1	9.7	0.0	0.06	
GP-21C	2/8/2022 14:06	0.0	1.4	12.4	0.0	-9.59	
GP-22A	2/8/2022 14:18	0.0	0.3	20.1	0.0	-12.11	
GP-22C	2/8/2022 14:19	0.0	1.2	3.8	0.0	-3.99	
GP-23A	2/8/2022 14:28	0.0	0.1	19.9	0.0	-0.01	
GP-23B	2/8/2022 14:30	0.0	0.1	20.1	0.0	-0.58	
GP-23C	2/8/2022 14:31	0.0	0.1	20.1	0.0	-0.26	
GP-24A	2/8/2022 14:46	0.0	4.8	9.1	0.0	0.02	
GP-24B	2/8/2022 14:47	0.0	0.8	17.7	0.0	0.08	
GP-25	2/8/2022 14:52	0.0	2.2	12.8	0.0	-8.69	
GP-26	2/8/2022 14:56	0.0	0.9	15.3	0.0	-0.04	
GP-27	2/8/2022 15:05	0.0	6.6	10.0	0.0	0.07	
GP-29A	2/8/2022 15:13	0.0	3.7	12.5	0.0	0.01	
GP-29B	2/8/2022 15:14	0.0	0.6	19.7	0.0	-2.37	
GP-30A	2/8/2022 7:50	0.0	0.3	20.9	0.0	-0.02	
GP-30B	2/8/2022 7:51	0.0	0.3	20.9	0.0	-1.01	
GP-31A	2/8/2022 7:55	0.0	0.3	20.8	0.0	-9.77	
GP-31B	2/8/2022 7:56	0.0	0.4	15.6	0.0	-0.98	
GP-31C	2/8/2022 7:58	0.0	0.2	20.9	0.0	-4.57	
GP-32A	2/8/2022 8:00	0.0	0.2	21.0	0.0	-0.01	
GP-32B	2/8/2022 8:02	0.0	0.2	21.0	0.0	0.02	
GP-32C	2/8/2022 8:03	0.0	0.3	21.0	0.0	0.03	
GP-33A	2/8/2022 8:07	0.0	0.5	20.6	0.0	-13.8	
GP-33B	2/8/2022 8:10	0.0	0.1	21.0	0.0	0.24	
GP-33C	2/8/2022 8:11	0.0	0.1	21.0	0.0	-1.52	
GP-34A	2/8/2022 8:17	0.0	0.0	0.0	0.0	0	
GP-34B	2/8/2022 8:18	0.0	0.1	21.0	0.0	0.02	
GP-34C	2/8/2022 8:20	0.0	0.1	21.0	0.0	-2.39	
GP-35A	2/8/2022 8:24	0.0	0.6	21.0	0.0	-3.14	
GP-35B	2/8/2022 8:25	0.0	0.2	18.8	0.0	1.37	
GP-35C	2/8/2022 8:27	0.0	0.1	21.0	0.0	-0.02	
GP-36A	2/8/2022 8:34	0.0	0.2	20.5	0.0	-0.15	
GP-36B	2/8/2022 8:35	0.0	0.2	20.4	0.0	-5.82	
GP-36C	2/8/2022 8:36	0.0	0.3	18.0	0.0	-1.9	
GP-37A	2/8/2022 9:56	0.0	0.2	20.0	0.0	-7.44	
GP-37B	2/8/2022 9:57	0.0	0.1	20.5	0.0	0.03	
GP-37C	2/8/2022 9:59	0.0	0.6	4.1	0.0	-2.71	
GP-39	2/8/2022 8:52	0.0	1.2	17.1	0.0	0.01	
GP-40	2/8/2022 8:57	0.0	0.1	18.8	0.0	0.41	

CEDAR HILLS REGIONAL LANDFILL
Landfill Gas Compliance Probes
February 2022 Monitoring Data

Location ID	Date/Time	CH4 (% Vol)	CO2 % Vol	O2 % Vol	Lower Explosive Limit (% LEL)	Static Pressure (in INWC)	Comments
GP-41A	2/8/2022 9:04	0.0	0.1	20.5	0.0	0.08	
GP-41B	2/8/2022 9:07	0.0	0.1	20.5	0.0	-0.02	
GP-41C	2/8/2022 9:09	0.0	0.1	20.5	0.0	0	
GP-42A	2/8/2022 9:14	0.0	0.1	20.5	0.0	-8.63	
GP-42B	2/8/2022 9:16	0.0	0.5	18.8	0.0	-1.26	
GP-43A	2/8/2022 9:35	0.0	0.3	19.0	0.0	-2.95	
GP-43B	2/8/2022 9:37	0.0	0.3	19.2	0.0	-6.76	
GP-43C	2/8/2022 9:38	0.0	0.1	20.4	0.0	-21.99	
GP-44A	2/8/2022 9:44	0.0	0.3	20.2	0.0	-8.04	
GP-44B	2/8/2022 9:45	0.0	1.1	8.8	0.0	13.7	
GP-44C	2/8/2022 9:47	0.0	0.1	20.3	0.0	0.04	
GP-45D	2/8/2022 10:50	0.0	0.1	20.4	0.0	-0.93	
GP-45I	2/8/2022 10:49	0.0	0.1	20.3	0.0	-0.03	
GP-45S	2/8/2022 10:47	0.0	0.1	20.3	0.0	0.02	

CEDAR HILLS REGIONAL LANDFILL**Landfill Gas Compliance Probes****March 2022 Monitoring Data**

Location ID	Date/Time	CH4 (% Vol)	CO2 % Vol	O2 % Vol	Lower Explosive Limit (% LEL)	Static Pressure (in INWC)
ATC-1D	3/15/2022 9:55	0.0	0.2	20.8	0.0	-0.3
ATC-1S	3/15/2022 9:54	0.0	0.7	20.6	0.0	-4.55
ATC-6D	3/15/2022 10:55	0.0	1.0	1.7	0.0	5.62
ATC-6S	3/15/2022 10:53	0.0	0.2	20.6	0.0	0.45
ATC-8D	3/15/2022 11:04	0.0	1.1	15.1	0.0	2.99
ATC-8S	3/15/2022 11:03	0.0	0.6	18.1	0.0	-0.76
GP-11A	3/15/2022 9:41	0.0	0.9	19.7	0	0
GP-11B	3/15/2022 9:42	0.0	0.3	20.8	0	-0.43
GP-11C	3/15/2022 9:44	0.0	0.2	18.2	0	-0.48
GP-11D	3/15/2022 9:45	0.0	0.2	20.7	0	-0.11
GP-12A	3/15/2022 10:09	0.0	0.2	20.8	0	-0.11
GP-12B	3/15/2022 10:10	0.0	0.2	20.8	0	-0.15
GP-12C	3/15/2022 10:12	0.0	0.3	17.5	0	-11.57
GP-12D	3/15/2022 10:13	0.0	0.4	16.7	0	-0.16
GP-13A	3/15/2022 10:01	0.0	0.2	20.8	0	-0.12
GP-13B	3/15/2022 10:02	0.0	0.2	20.6	0	-0.1
GP-13C	3/15/2022 10:03	0.0	0.2	20.8	0	-0.19
GP-13D	3/15/2022 10:05	0.0	0.3	19.1	0	-0.03
GP-14A	3/15/2022 10:19	0.0	0.3	16.7	0	-0.06
GP-14B	3/15/2022 10:21	0.0	0.2	20.7	0	-0.18
GP-15A	3/15/2022 10:40	0.0	0.2	20.7	0	-0.14
GP-15C	3/15/2022 10:42	0.0	1.0	16.6	0	-0.07
GP-15D	3/15/2022 10:43	0.0	0.2	20.6	0	-1.53
GP-16A	3/15/2022 10:58	0.0	0.2	20.4	0	0.17
GP-16B	3/15/2022 10:59	0.0	0.4	18.7	0	-0.78
GP-16C	3/15/2022 11:00	0.0	1.2	13.3	0	0.04
GP-17A	3/15/2022 12:58	0.0	0.2	19.3	0	3.97
GP-17B	3/15/2022 13:00	0.0	0.9	15.8	0	-0.06
GP-17C	3/15/2022 13:01	0.0	0.2	19.4	0	-0.26
GP-18A	3/15/2022 13:04	0.0	0.2	19.6	0	-0.6
GP-18B	3/15/2022 13:05	0.0	0.5	12.8	0	0.05
GP-18C	3/15/2022 13:07	0.0	0.3	15.6	0	-0.21
GP-19A	3/15/2022 13:10	0.0	0.2	19.9	0	0.18
GP-19B	3/15/2022 13:11	0.0	0.8	14.9	0	0.02
GP-19C	3/15/2022 13:13	0.0	0.2	20.0	0	0.29
GP-20A	3/15/2022 13:16	0.0	0.2	20.2	0	0.05
GP-20B	3/15/2022 13:17	0.0	0.4	13.0	0	0.03
GP-20C	3/15/2022 13:18	0.0	0.6	14.7	0	0.25

CEDAR HILLS REGIONAL LANDFILL
Landfill Gas Compliance Probes
March 2022 Monitoring Data

Location ID	Date/Time	CH4 (% Vol)	CO2 % Vol	O2 % Vol	Lower Explosive Limit (% LEL)	Static Pressure (in INWC)
GP-21A	3/15/2022 13:21	0.0	0.2	20.3	0	-0.14
GP-21B	3/15/2022 13:22	0.0	0.2	9.4	0	0.29
GP-21C	3/15/2022 13:24	0.0	1.8	14.3	0	-8.92
GP-22A	3/15/2022 13:30	0.0	0.4	20.5	0	-0.81
GP-22C	3/15/2022 13:32	0.0	1.4	3.4	0	-0.27
GP-23A	3/15/2022 13:36	0.0	0.2	20.5	0	0.02
GP-23B	3/15/2022 13:37	0.0	0.2	20.6	0	0.7
GP-23C	3/15/2022 13:39	0.0	0.2	20.7	0	0.61
GP-24A	3/15/2022 13:42	0.0	2.6	14.7	0	0.08
GP-24B	3/15/2022 13:43	0.0	1.1	17.9	0	0.05
GP-25	3/15/2022 13:47	0.0	2.2	13.8	0	-1.74
GP-26	3/15/2022 13:50	0.0	1.1	15.8	0	0.7
GP-27	3/15/2022 13:56	0.0	5.7	10.7	0	0.14
GP-29A	3/15/2022 14:01	0.0	2.4	16.7	0	0.03
GP-29B	3/15/2022 14:02	0.0	0.9	20.5	0	0.22
GP-30A	3/15/2022 7:46	0.0	0.3	20.4	0	0.3
GP-30B	3/15/2022 7:47	0.0	1.0	19.9	0	-0.82
GP-31A	3/15/2022 7:52	0.0	0.5	20.4	0	-8.34
GP-31B	3/15/2022 7:53	0.0	0.5	16.8	0	0.16
GP-31C	3/15/2022 7:54	0.0	0.2	21.1	0	0.04
GP-32A	3/15/2022 7:58	0.0	0.9	18.9	0	0.02
GP-32B	3/15/2022 7:59	0.0	0.5	21.0	0	0.05
GP-32C	3/15/2022 8:00	0.0	0.4	21.0	0	-0.07
GP-33A	3/15/2022 8:05	0.0	0.6	21.0	0	0.02
GP-33B	3/15/2022 8:07	0.0	0.2	21.0	0	0.07
GP-33C	3/15/2022 8:08	0.0	0.2	21.0	0	-0.97
GP-34A	3/15/2022 8:12	0.0	0.2	20.7	0	26.33
GP-34B	3/15/2022 8:14	0.0	0.5	13.5	0	0
GP-34C	3/15/2022 8:15	0.0	0.2	12.1	0	0.59
GP-35A	3/15/2022 8:20	0.0	0.2	20.2	0	5.6
GP-35B	3/15/2022 8:22	0.0	0.2	20.7	0	-0.09
GP-35C	3/15/2022 8:23	0.0	0.2	18.9	0	-0.22
GP-36A	3/15/2022 8:26	0.0	0.5	11.4	0	-0.48
GP-36B	3/15/2022 8:27	0.0	0.3	15.8	0	0.04
GP-36C	3/15/2022 8:28	0.0	0.5	10.8	0	1.14
GP-37A	3/15/2022 8:34	0.0	0.3	15.1	0	-2.47
GP-37B	3/15/2022 8:36	0.0	0.3	20.6	0	0.3
GP-37C	3/15/2022 8:37	0.0	0.9	1.4	0	0.82

CEDAR HILLS REGIONAL LANDFILL
Landfill Gas Compliance Probes
March 2022 Monitoring Data

Location ID	Date/Time	CH4 (% Vol)	CO2 % Vol	O2 % Vol	Lower Explosive Limit (% LEL)	Static Pressure (in INWC)
GP-39	3/15/2022 8:42	0.0	1.5	17.5	0	-0.34
GP-40	3/15/2022 8:45	0.0	0.2	18.2	0	-0.09
GP-41A	3/15/2022 8:48	0.0	0.2	21.0	0	0
GP-41B	3/15/2022 8:50	0.0	0.2	21.0	0	-0.22
GP-41C	3/15/2022 8:51	0.0	0.3	21.0	0	-0.04
GP-42A	3/15/2022 8:55	0.0	0.3	20.9	0	-5.41
GP-42B	3/15/2022 8:56	0.0	1.0	16.2	0	-0.13
GP-43A	3/15/2022 8:59	0.0	0.4	19.3	0	-1.16
GP-43B	3/15/2022 9:01	0.0	0.2	21.0	0	-2.62
GP-43C	3/15/2022 9:02	0.0	0.4	12.1	0	-10.84
GP-44A	3/15/2022 9:06	0.1	0.4	20.5	2	-0.13
GP-44B	3/15/2022 9:07	0.0	1.0	10.5	0	-0.2
GP-44C	3/15/2022 9:08	0.0	0.2	20.9	0	-0.1
GP-45D	3/15/2022 9:39	0.0	0.2	20.9	0	-0.53
GP-45I	3/15/2022 9:38	0.0	0.2	20.7	0	0
GP-45S	3/15/2022 9:36	0.0	0.3	20.8	0	-0.1

Interior Probes

CEDAR HILLS REGIONAL LANDFILL

**Landfill Gas Interior Probes
January 2022 Monitoring Data**

Location ID	Date/Time	CH4 (% Vol)	CO2 (% Vol)	O2 (% Vol)	Lower Explosive Limit (% LEL)	Static Pressure (in INWC)	Comments
ATC-3D	1/13/2022 16:48	0.0	0.1	20.5	0	0.03	
ATC-3S	1/13/2022 16:47	0.0	0.1	20.2	0	-0.04	
GP-1A	1/12/2022 22:13	0.0	0.1	21.0	0	0.05	
GP-1B	1/12/2022 22:15	0.0	0.2	21.0	0	-0.82	
GP-2A	1/12/2022 22:42	0.0	1.6	18.7	0	-0.06	
GP-2B	1/12/2022 22:44	0.0	0.1	20.6	0	0.01	
GP-3	1/12/2022 22:54	0.0	0.1	20.6	0	6.87	
GP-46D	1/12/2022 21:29	0.0	0.1	21.0	0	0.73	
GP-46I	1/12/2022 21:27	0.0	0.1	21.0	0	-0.49	
GP-46S	1/12/2022 21:25	0.0	0.1	19.8	0	0.01	
GP-47D	1/13/2022 17:03	0	0.3	6.8	0	0.84	
GP-47I	1/13/2022 17:02	70.1	23.6	0.1	>>>>	-1.8	
GP-47S	1/13/2022 17:01	0	0.1	20.7	0	-1.52	
GP-48D	1/12/2022 21:21	0.0	0.1	21.0	0	-0.04	
GP-48I	1/12/2022 21:20	0.0	0.3	20.8	0	-0.16	
GP-48S	1/12/2022 21:18	0.0	0.2	20.2	0	-0.05	
GP-4A	1/12/2022 22:47	0.0	0.1	20.6	0	-3.57	
GP-4B	1/12/2022 22:49	0.0	0.4	20.3	0	1.36	
GP-52	1/13/2022 15:20	0.0	0.1	20.5	0	-0.09	
GP-53	1/13/2022 15:21	0.0	1.0	17.6	0	-0.54	
GP-54	1/13/2022 15:22	0.0	0.1	20.5	0	-0.01	
GP-55	1/12/2022 22:04	0.0	0.3	21.0	0	0.08	
GP-56	1/12/2022 22:05	0.0	0.7	21.0	0	0.00	
GP-57	1/12/2022 21:59	29.0	13.9	5.9	>>>>	-3.35	
GP-58	1/12/2022 22:00	0.1	14.6	1.9	2	-13.12	
GP-59	1/12/2022 21:54	0.0	0.2	21.0	0	0.12	
GP-5A	1/13/2022 16:08	0.0	0.2	18.0	0	-2.57	
GP-5BA	1/13/2022 16:10	0.0	0.1	20.6	0	0.05	
GP-5BB	1/13/2022 16:10	0.0	0.1	21.0	0	-2.59	
GP-5BC	1/13/2022 16:11	0.0	0.1	21.0	0	-2.62	
GP-5BD	1/13/2022 16:12	0.0	0.1	21.0	0	-2.35	
GP-60	1/12/2022 21:56	0.0	0.1	21.0	0	-0.03	
GP-61	1/12/2022 21:46	0.0	0.1	21.0	0	0.01	
GP-62	1/12/2022 21:48	0.0	3.8	18.9	0	-0.02	
GP-63A	1/13/2022 16:27	0.0	0.2	20.7	0	0.13	
GP-63B	1/13/2022 16:28	0.0	0.1	20.5	0	0.05	
GP-63C	1/13/2022 16:29	0.0	0.1	20.7	0	-2.1	
GP-64A	1/13/2022 16:21	0.0	0.2	20.5	0	0.39	
GP-64B	1/13/2022 16:22	0.0	0.5	20.5	0	0.14	
GP-64C	1/13/2022 16:23	0.0	0.1	20.7	0	-2.1	

CEDAR HILLS REGIONAL LANDFILL
Landfill Gas Interior Probes
January 2022 Monitoring Data

Location ID	Date/Time	CH4 (% Vol)	CO2 (% Vol)	O2 (% Vol)	Lower Explosive Limit (% LEL)	Static Pressure (in INWC)	Comments
GP-6A	1/12/2022 22:20	0.0	0.1	20.6	0	-0.23	
GP-6B	1/12/2022 22:22	0.0	0.1	20.6	0	0.00	
GP-6C	1/12/2022 22:24	0.0	0.1	20.5	0	0.00	
GP-6D	1/12/2022 22:26	0.0	0.1	20.5	0	-0.01	
GP-6E	1/12/2022 22:27	0.0	0.1	20.5	0	0.11	
GP-6F	1/12/2022 22:29	0.0	0.1	20.5	0	0.04	
GP-6G	1/12/2022 22:31	0.0	0.1	20.5	0	0.16	
GP-6H	1/12/2022 22:33	0.0	0.1	20.6	0	1.21	
GP-7	1/12/2022 21:33	0.0	0.1	21.0	0	0.04	
GP-8	1/12/2022 21:36	0.0	7.5	9.7	0	0.04	
GP-9	1/12/2022 21:40	0.0	0.1	21.0	0	0.24	
GP-B4-1	1/12/2022 22:50	0.0	4.2	14.3	0	-0.01	
GP-B4-2	1/12/2022 22:52	0.0	0.2	20.6	0	0.40	

CEDAR HILLS REGIONAL LANDFILL
Landfill Gas Interior Probes
February 2022 Monitoring Data

Location ID	Date/Time	CH4 (% Vol)	CO2 (% Vol)	O2 (% Vol)	Lower Explosive Limit (% LEL)	Static Pressure (in INWC)	Comments
ATC-3D	2/8/2022 11:41	0.0	0.1	20.9	0	-0.01	
ATC-3S	2/8/2022 11:40	0.0	0.1	20.9	0	-0.02	
GP-1A	2/9/2022 22:36	0.0	0.1	21.0	0.0	-0.02	
GP-1B	2/9/2022 22:39	0.0	0.1	21.0	0.0	-0.02	
GP-2A	2/9/2022 23:02	0.0	4.9	21.0	0.0	-0.18	
GP-2B	2/9/2022 23:04	0.0	0.1	21.0	0.0	-0.19	
GP-3	2/9/2022 23:36	0.0	6.1	10.5	0.0	-0.22	
GP-46D	2/9/2022 23:45	0.0	0.1	21.0	0.0	-0.29	
GP-46I	2/9/2022 23:42	0.0	0.1	21.0	0.0	-1.45	
GP-46S	2/9/2022 23:41	0.0	0.1	21.0	0.0	-0.25	
GP-47D	2/8/2022 13:23	0.3	0.6	18.8	6	-0.03	
GP-47I	2/8/2022 13:22	70.8	23.7	0.2	>>>>	-1.89	
GP-47S	2/8/2022 13:21	0.0	0.1	20.1	0	-1.87	
GP-48D	2/9/2022 23:57	0.0	0.1	21.0	0.0	-0.71	
GP-48I	2/9/2022 23:54	0.0	0.3	21.0	0.0	-0.36	
GP-48S	2/9/2022 23:52	0.0	0.2	20.5	0.0	-0.29	
GP-4A	2/9/2022 23:22	0.0	0.1	21.0	0.0	-0.50	
GP-4B	2/9/2022 23:25	0.0	0.4	21.0	0.0	-3.63	
GP-52	2/8/2022 10:06	0.0	0.2	13.5	0	-0.02	
GP-53	2/8/2022 10:08	0.0	0.3	20.0	0	-0.67	
GP-54	2/8/2022 10:10	0.0	0.1	20.5	0	0.03	
GP-55	2/9/2022 22:22	0.0	0.3	21.0	0.0	-0.13	
GP-56	2/9/2022 22:19	0.1	0.7	21.0	2.0	-0.09	
GP-57	2/9/2022 22:16	58.3	24.9	0.2	>>>>	-6.84	
GP-58	2/9/2022 22:13	0.0	0.2	21.0	0.0	-43.03	
GP-59	2/9/2022 22:08	0.0	0.1	21.0	0.0	-0.04	
GP-5A	2/8/2022 11:28	0.0	0.3	16.7	0	-3.8	
GP-5BA	2/8/2022 11:30	0.0	0.1	20.8	0	0.01	
GP-5BB	2/8/2022 11:32	0.0	0.1	20.9	0	-3.75	
GP-5BC	2/8/2022 11:33	0.0	0.1	21.0	0	-3.68	
GP-5BD	2/8/2022 11:34	0.0	0.1	21.0	0	-3.09	
GP-60	2/9/2022 22:05	0.0	0.2	21.0	0.0	-0.01	
GP-61	2/9/2022 21:53	0.0	0.1	20.6	0.0	-0.52	
GP-62	2/9/2022 21:51	0.0	2.6	18.9	0.0	0.02	
GP-63A	2/8/2022 11:52	0.0	0.2	20.7	0.0	0.30	
GP-63B	2/8/2022 11:53	0.0	0.1	20.7	0.0	-0.01	
GP-63C	2/8/2022 11:55	0.0	0.1	20.8	0.0	-2.39	
GP-64A	2/8/2022 12:12	0.0	0.4	19.9	0.0	0.07	
GP-64B	2/8/2022 12:13	0.0	0.4	20.5	0.0	-0.03	

CEDAR HILLS REGIONAL LANDFILL
Landfill Gas Interior Probes
February 2022 Monitoring Data

Location ID	Date/Time	CH4 (% Vol)	CO2 (% Vol)	O2 (% Vol)	Lower Explosive Limit (% LEL)	Static Pressure (in INWC)	Comments
GP-64C	2/8/2022 12:15	0	0.1	20.8	0	-2.61	
GP-6A	2/9/2022 22:43	0.0	0.1	21.0	0.0	-1.22	
GP-6B	2/9/2022 22:45	0.0	0.1	21.0	0.0	-0.99	
GP-6C	2/9/2022 22:48	0.0	0.1	21.0	0.0	-0.83	
GP-6D	2/9/2022 22:50	0.0	0.1	21.0	0.0	-1.31	
GP-6E	2/9/2022 22:51	0.0	0.1	21.0	0.0	-0.93	
GP-6F	2/9/2022 22:53	0.0	0.1	21.0	0.0	-0.96	
GP-6G	2/9/2022 22:56	0.0	0.1	21.0	0.0	-0.93	
GP-6H	2/9/2022 22:58	0.0	0.1	21.0	0.0	-1.28	
GP-7	2/9/2022 22:32	0.0	0.1	21	0	-0.73	
GP-8	2/9/2022 22:27	0.0	0.3	21	0	-0.78	
GP-9	2/9/2022 22:00	0.0	0.1	20.8	0	-0.75	
GP-B4-1	2/9/2022 23:30	0.0	5.7	11	0	-1.32	
GP-B4-2	2/9/2022 23:32	0.0	0.1	21	0	-0.69	

CEDAR HILLS REGIONAL LANDFILL
Landfill Gas Interior Probes
March 2022 Monitoring Data

Location ID	Date/Time	CH4 (% Vol)	CO2 (% Vol)	O2 (% Vol)	Lower Explosive Limit (% LEL)	Static Pressure (in INWC)	Comments
ATC-3D	3/15/2022 10:37	0	0.2	20.7	0	-0.14	
ATC-3S	3/15/2022 10:36	0	0.2	20.7	0	-0.13	
GP-1A	3/10/2022 22:20	0.0	0.1	21.0	0	-0.03	
GP-1B	3/10/2022 22:22	0.0	1.0	19.0	0	-3.27	
GP-2A	3/10/2022 22:43	0.0	4.0	15.6	0	-0.06	
GP-2B	3/10/2022 22:45	0.0	0.1	21.0	0	-0.09	
GP-3	3/10/2022 23:00	0.0	6.2	11.3	0	-0.13	
GP-46D	3/10/2022 23:08	0.0	0.1	21.0	0	-0.74	
GP-46I	3/10/2022 23:06	0.0	0.1	21.0	0	-0.59	
GP-46S	3/10/2022 23:04	0.0	0.2	19.5	0	-0.07	
GP-47D	3/15/2022 9:30	0	1.6	5.5	0	1.49	
GP-47I	3/15/2022 9:28	72.4	23.3	0	>>>>	0.66	
GP-47S	3/15/2022 9:27	76.7	21.4	0	>>>>	0.87	
GP-48D	3/10/2022 23:20	0.0	0.1	21.0	0	-0.86	
GP-48I	3/10/2022 23:18	0.1	0.3	21.0	2	-0.15	
GP-48S	3/10/2022 23:16	0.1	0.4	20.0	2	-0.03	
GP-4A	3/10/2022 22:49	0.0	0.1	21.0	0	0	
GP-4B	3/10/2022 22:51	0.0	0.4	21.0	0	0	
GP-52	3/15/2022 9:19	0	0.2	21	0	0.16	
GP-53	3/15/2022 9:21	0	0.6	19.4	0	-0.23	
GP-54	3/15/2022 9:22	0	0.2	21	0	-0.31	
GP-55	3/10/2022 22:08	0.0	0.3	21.0	0	-0.12	
GP-56	3/10/2022 22:09	0.0	0.3	21.0	0	-0.1	
GP-57	3/10/2022 22:02	57.7	25.2	0.1	>>>>	-3.78	
GP-58	3/10/2022 22:05	0.2	4.8	18.8	4	-17.66	
GP-59	3/10/2022 21:56	0.0	0.1	21.0	0	-0.15	
GP-5A	3/15/2022 10:26	0	0.8	13	0	0.71	
GP-5BA	3/15/2022 10:28	0	0.3	19.8	0	0.17	
GP-5BB	3/15/2022 10:30	0	1.8	9	0	0.83	
GP-5BC	3/15/2022 10:31	0	1.4	7.5	0	0.85	
GP-5BD	3/15/2022 10:32	0	1.2	9.6	0	0.08	
GP-60	3/10/2022 21:59	0.0	0.1	21.0	0	-0.03	
GP-61	3/10/2022 21:43	0.0	0.1	20.9	0	-0.56	
GP-62	3/10/2022 21:45	0.0	2.4	19.2	0	-0.01	
GP-63A	3/15/2022 11:07	0	0.4	20.4	0	-0.15	
GP-63B	3/15/2022 11:08	0	0.2	20.5	0	-0.15	
GP-63C	3/15/2022 11:10	0	0.5	17.8	0	0.07	
GP-64A	3/15/2022 10:47	0	0.5	20.6	0	-0.2	
GP-64B	3/15/2022 10:49	0	0.2	20.7	0	-0.22	

CEDAR HILLS REGIONAL LANDFILL
Landfill Gas Interior Probes
March 2022 Monitoring Data

Location ID	Date/Time	CH4 (% Vol)	CO2 (% Vol)	O2 (% Vol)	Lower Explosive Limit (% LEL)	Static Pressure (in INWC)	Comments
GP-64C	3/15/2022 10:50	0.1	1.1	9.6	2	-0.1	
GP-6A	3/10/2022 22:25	0.0	0.1	21.0	0	-1.33	
GP-6B	3/10/2022 22:27	0.0	0.1	21.0	0	-1.06	
GP-6C	3/10/2022 22:29	0.0	0.1	21.0	0	-1.12	
GP-6D	3/10/2022 22:31	0.0	0.1	21.0	0	-1.27	
GP-6E	3/10/2022 22:33	0.0	0.1	21.0	0	-1.07	
GP-6F	3/10/2022 22:35	0.0	0.1	21.0	0	-1.13	
GP-6G	3/10/2022 22:37	0.0	0.1	21.0	0	-1.06	
GP-6H	3/10/2022 22:39	0.0	0.1	21.0	0	-1.3	
GP-7	3/10/2022 22:16	0.0	0.1	21.0	0	-1.09	
GP-8	3/10/2022 22:13	0.0	0.1	21.0	0	-1	
GP-9	3/10/2022 21:50	0.0	0.1	21.0	0	-0.99	
GP-B4-1	3/10/2022 22:54	0.0	6.3	11.3	0	-1.29	
GP-B4-2	3/10/2022 22:56	0.0	0.1	21.0	0	-0.85	

Migration Probes

CEDAR HILLS REGIONAL LANDFILL
West Perimeter Landfill Gas Migration Control Probes
First Quarter 2022 Monitoring Data

Probe ID	Date	Time	Barometric			Static		Comments
			Pressure in Hg	CH4 %vol	CO2 %vol	O2 %vol	Pressure in INWC	
MGPW 1700	1/3/2022	2:10pm	29.51	0	0.5	19.5	0.3	
MGPW 1700	1/31/2022	10:21am	30.1	0	0	20.6	0	
MGPW 1700	2/5/2022	10:00am	30.37	0	0.2	21	-0.05	
MGPW 1700	2/19/2022	10:22am	30.04	0.3	0.6	20.6	-0.03	
MGPW 1700	3/15/2022	3:28pm	30.04	0	0.2	20.7	-0.03	
MGPW 1700	3/28/2022	8:47am	29.69	0.1	0.2	21	-0.17	
MGPW 1708	1/3/2022	2:08pm	29.51	1.9	9.2	4.3	-0.7	
MGPW 1708	1/31/2022	10:36am	30.1	0	0	20.3	-1.86	
MGPW 1708	2/5/2022	10:01am	30.37	0	0.2	20.3	-2.48	
MGPW 1708	2/19/2022	10:31am	30.04	7.4	12.9	0	0.62	
MGPW 1708	3/15/2022	3:38pm	30.04	0	0.3	20.5	-1.76	
MGPW 1708	3/28/2022	8:59am	29.69	0.1	0.3	21	-0.94	
MGPW 1710S	1/3/2022	2:04pm	29.51	0	0	20.6	-0.60	
MGPW 1710S	1/31/2022	10:34am	30.1	0	0	20.1	-1.62	
MGPW 1710S	2/5/2022	10:02am	30.37	0	0.2	20.1	-2.37	
MGPW 1710S	2/19/2022	10:36am	30.04	0.2	6.4	12.4	0.60	
MGPW 1710S	3/15/2022	3:52pm	30.04	0	0.2	20.5	-1.82	
MGPW 1710S	3/28/2022	9:07am	29.69	0	0.1	21	-1.03	
MGPW 1710D	1/3/2022	2:06pm	29.51	0	0	20.7	-0.7	
MGPW 1710D	1/31/2022	10:35am	30.1	0	0	20.2	-1.82	
MGPW 1710D	2/5/2022	10:03am	30.37	0	0.2	21	-2.39	
MGPW 1710D	2/19/2022	10:37am	30.04	0.1	0.3	20.8	0.75	
MGPW 1710D	3/15/2022	4:00pm	30.04	0	0.1	20.8	-1.75	
MGPW 1710D	3/28/2022	9:05am	29.69	0	0.2	21	-1.07	
MGPW 1714	1/3/2022	2:01pm	29.51	0	0	20.4	-0.8	
MGPW 1714	1/31/2022	10:32am	30.1	0	0	20.1	-1.71	
MGPW 1714	2/5/2022	10:04am	30.37	0	0.2	20	-2.28	
MGPW 1715	2/19/2022	10:41am	30.04	0.5	8.3	8.3	0.73	
MGPW 1716	3/15/2022	4:12pm	30.04	0	0.2	20.7	-1.77	
MGPW 1714	3/28/2022	9:14am	29.69	0.1	0.4	21	-1.06	

On-Site Building Monitoring

**FIRST QUARTER
BUILDING MONITORING**



King County

INSTRUMENT: Place check by instrument used :

WEATHER:

DATE: 02/05/22

Foxboro TVA 2020

Sunny

TECH: LD,SB

SEM 500 ×

ENVIS ID	BLDG #	DESCRIPTION	CH ₄ (ppm)	REMARKS	BAR PRESS (in. Hg)	TIME
GOC- 02/05/22	1	FRONT OFFICE			30.36	9:30PM
GCR- 02/05/22	2	CONF ROOM				
GAO- 02/05/22	3	PAYROLL OFFICE				
GEO- 02/05/22	4	ENGR. OFFICE				
GLRC- 02/05/22	5	LUNCHROOM				
GSPC 02/05/22		SPOC				
GELO- 02/05/22	A 6A	DRY STORAGE				
GELO- 02/05/22	B 6B	ELECTRICIAN OFFICE				
GAP- 02/05/22		ACCOUNT PAYABLE				
GSO- 02/05/22	A 7A	SHOP OFFICE				
GPR- 02/05/22	B 7B	PARTS ROOM				
GMS- 02/05/22	C 7C	SHOP PIT AREA/BAY				
GTB- 02/05/22	D 7D	SHOP TIRE BAY				
GEW- 02/05/22	E 7E	EAST WELD SHOP				
GWW- 02/05/22	F 7F	WEST WELD SHOP				
GCS- 02/05/22	8	CARPENTER'S				
GSS- 02/05/22	9	WASTEWATER				
GSS- 02/05/22	B 9B	CARPENTER/STORAGE	NA	REMOVED		
GSH- 02/05/22	10	SCALEHOUSE				
GB13- 02/05/22	13	WW COMPRESSOR				
GB16- 02/05/22	16	GENERATOR				
GB19- 02/05/22	19	LEPS (P.S.# 5)				
GB19- 02/05/22	B 19B	LEPS/H2O2 ROOM				
GB20- 02/05/22	20	LEPS ELEC PANALS				
GB21- 02/05/22	21	STORAGE(OLD PS 1)				
GB22- 02/05/22	22	STORAGE/N FLARE				
GB23- 02/05/22	23	LFGAS				
GB24- 02/05/22	24	NE GENERATOR BLDG				
GBWW- 02/05/22	30	WOMEN BRK RM				
GPWT- 02/05/22	PW	PRESSURE WASH RM				
GBRR- 02/05/22	RR	TRUCKWASH RR W				
GBSS- 02/05/22	SS	TRUCKWASH RR E				
GBZZ- 02/05/22	29	MANAGERS TRAILER				
GBPT- 02/05/22		CCG FASTER				
GCLS- 02/05/22		CHLORINE SHED				

Second Quarter 2022

Landfill Gas Monitoring Data

Compliance Probes

CEDAR HILLS REGIONAL LANDFILL
Landfill Gas Compliance Probes
April 2022 Monitoring Data

Location ID	Date/Time	CH4 (% Vol)	CO2 % Vol	O2 % Vol	Lower Explosive Limit (% LEL)	Static Pressure (in INWC)	Comments
ATC-1D	4/7/2022 8:52	0.0	0.2	19.5	0.0	0.26	
ATC-1S	4/7/2022 8:51	0.0	0.1	20.5	0.0	-0.17	
ATC-6D	4/7/2022 10:33	0.0	0.8	2.2	0.0	0.55	
ATC-6S	4/7/2022 10:32	0.0	0.1	19.9	0.0	-4.02	
ATC-8D	4/7/2022 10:24	0.0	0.3	19.6	0.0	0.12	
ATC-8S	4/7/2022 10:22	0.0	0.3	15.4	0.0	-4.02	
GP-11A	4/7/2022 8:40	0.0	0.1	20.5	0.0	0.11	
GP-11B	4/7/2022 8:41	0.0	0.1	20.5	0.0	0.07	
GP-11C	4/7/2022 8:42	0.0	0.1	20.5	0.0	0.01	
GP-11D	4/7/2022 8:44	0.0	0.1	20.5	0.0	0.18	
GP-12A	4/7/2022 9:06	0.0	0.1	20.7	0	0.09	
GP-12B	4/7/2022 9:07	0.0	0.1	20.8	0	0.06	
GP-12C	4/7/2022 9:08	0.0	0.2	17.9	0	-14.98	
GP-12D	4/7/2022 9:10	0.0	0.1	20.8	0	0.12	
GP-13A	4/7/2022 8:57	0.0	0.1	20.6	0	0.14	
GP-13B	4/7/2022 8:59	0.0	0.1	20.6	0	0.1	
GP-13C	4/7/2022 9:00	0.0	0.1	20.6	0	0.08	
GP-13D	4/7/2022 9:01	0.0	0.1	20.7	0	-1.22	
GP-14A	4/7/2022 9:42	0.0	0.1	20.6	0	0.09	
GP-14B	4/7/2022 9:43	0.0	0.1	20.7	0	-0.46	
GP-15A	4/7/2022 10:06	0.0	0.1	20.2	0	0.06	
GP-15C	4/7/2022 10:07	0.0	0.6	17.5	0	0.29	
GP-15D	4/7/2022 10:08	0.0	0.1	20.1	0	-1.09	
GP-16A	4/7/2022 10:26	0.0	0.1	19.9	0	0.11	
GP-16B	4/7/2022 10:27	0.0	0.1	20.0	0	0.61	
GP-16C	4/7/2022 10:28	0.0	0.1	20.0	0	-1.18	
GP-17A	4/7/2022 11:13	0.0	0.1	19.9	0	-0.19	
GP-17B	4/7/2022 11:14	0.0	0.8	16.6	0	0.01	
GP-17C	4/7/2022 11:15	0.0	0.1	19.8	0	-0.82	
GP-18A	4/7/2022 11:17	0.0	0.1	19.7	0	0.03	
GP-18B	4/7/2022 11:18	0.0	0.1	19.3	0	0.31	
GP-18C	4/7/2022 11:19	0.0	0.1	19.8	0	-1.01	
GP-19A	4/7/2022 11:22	0.0	0.1	19.9	0	0.08	
GP-19B	4/7/2022 11:23	0.0	0.6	15.4	0	-0.05	
GP-19C	4/7/2022 11:24	0.0	0.1	19.8	0	-0.03	
GP-20A	4/7/2022 11:26	0.0	0.1	19.9	0	0.02	
GP-20B	4/7/2022 11:27	0.0	0.2	17.6	0	0.11	
GP-20C	4/7/2022 11:28	0.0	0.1	19.8	0	0.15	
GP-21A	4/7/2022 11:31	0.0	0.1	19.9	0	0.03	
GP-21B	4/7/2022 11:32	0.0	0.1	10.0	0	0.07	
GP-21C	4/7/2022 11:33	0.0	0.1	19.6	0	-0.11	
GP-22A	4/7/2022 11:36	0.0	0.2	19.8	0	-3.21	
GP-22C	4/7/2022 11:37	0.0	1.2	3.3	0	-2.42	

CEDAR HILLS REGIONAL LANDFILL
Landfill Gas Compliance Probes
April 2022 Monitoring Data

Location ID	Date/Time	CH4 (% Vol)	CO2 % Vol	O2 % Vol	Lower Explosive Limit (% LEL)	Static Pressure (in INWC)	Comments
GP-23A	4/7/2022 11:42	0.0	0.1	19.5	0	-0.03	
GP-23B	4/7/2022 11:43	0.0	0.1	19.8	0	0.03	
GP-23C	4/7/2022 11:44	0.0	0.1	19.8	0	0.05	
GP-24A	4/7/2022 11:47	0.0	5.2	8.2	0	0.08	
GP-24B	4/7/2022 11:48	0.0	1.7	13.0	0	0.05	
GP-25	4/7/2022 11:51	0.0	2.3	13.8	0	-6.21	
GP-26	4/7/2022 11:55	0.0	0.9	15.2	0	-1.44	
GP-27	4/7/2022 11:58	0.0	6.9	8.4	0	0.07	
GP-29A	4/7/2022 12:03	0.0	2.2	15.8	0	0.01	
GP-29B	4/7/2022 12:04	0.0	0.6	19.5	0	-0.1	
GP-30A	4/7/2022 7:19	0.0	1.5	19.2	0	0.05	
GP-30B	4/7/2022 7:20	0.0	0.3	20.9	0	-0.03	
GP-31A	4/7/2022 7:24	0.0	0.0	0.0	0	0	
GP-31B	4/7/2022 7:25	0.0	0.2	20.0	0	0.86	
GP-31C	4/7/2022 7:26	0.0	0.1	21.0	0	0.01	
GP-32A	4/7/2022 7:29	0.0	0.9	18.5	0	0.02	
GP-32B	4/7/2022 7:30	0.0	0.2	20.9	0	-0.02	
GP-32C	4/7/2022 7:31	0.0	0.3	20.9	0	-0.02	
GP-33A	4/7/2022 7:33	0.0	0.2	21.0	0	0.02	
GP-33B	4/7/2022 7:37	0.0	0.1	20.7	0	0.08	
GP-33C	4/7/2022 7:38	0.0	0.1	20.7	0	0.1	
GP-34A	4/7/2022 7:40	0.0	0.0	0.0	0	0	
GP-34B	4/7/2022 7:41	0.0	0.1	20.7	0	0.04	
GP-34C	4/7/2022 7:42	0.0	0.1	20.8	0	-1.12	
GP-35A	4/7/2022 7:45	0.0	0.1	20.7	0	0.1	
GP-35B	4/7/2022 7:46	0.0	0.1	20.6	0	-0.03	
GP-35C	4/7/2022 7:47	0.0	0.1	20.8	0	0.06	
GP-36A	4/7/2022 7:49	0.0	0.3	9.2	0	0.52	
GP-36B	4/7/2022 7:51	0.0	0.0	0.0	0	0	
GP-36C	4/7/2022 7:52	0.0	0.2	20.5	0	-1.09	
GP-37A	4/7/2022 7:58	0.0	0.0	0.0	0	0	
GP-37B	4/7/2022 7:59	0.0	0.2	20.6	0	0.04	
GP-37C	4/7/2022 8:00	0.0	0.1	20.6	0	0.08	
GP-39	4/7/2022 8:04	0.0	0.7	18.7	0	0.07	
GP-40	4/7/2022 8:07	0.0	0.1	17.5	0	0.02	
GP-41A	4/7/2022 8:10	0.0	0.1	20.6	0	0.11	
GP-41B	4/7/2022 8:11	0.0	0.2	20.2	0	-0.06	
GP-41C	4/7/2022 8:12	0.0	0.1	20.7	0	-0.03	
GP-42A	4/7/2022 8:15	0.0	0.0	0.0	0	0	
GP-42B	4/7/2022 8:16	0.0	0.4	19.0	0	-0.05	
GP-43A	4/7/2022 8:20	0.0	0.1	20.6	0	0.04	
GP-43B	4/7/2022 8:22	0.0	0.1	20.6	0	0.1	
GP-43C	4/7/2022 8:23	0.0	0.1	20.6	0	0.02	
GP-44A	4/7/2022 8:26	0.0	0.1	20.5	0	0.08	
GP-44B	4/7/2022 8:27	0.0	0.1	20.5	0	0.6	
GP-44C	4/7/2022 8:28	0.0	0.1	20.6	0	-0.06	
GP-45D	4/7/2022 8:38	0.0	0.1	20.5	0	-0.16	
GP-45I	4/7/2022 8:37	0.0	0.1	20.5	0	0.1	
GP-45S	4/7/2022 8:36	0.0	0.1	20.5	0	0.08	

CEDAR HILLS REGIONAL LANDFILL
Landfill Gas Compliance Probes
May 2022 Monitoring Data

Location ID	Date/Time	CH4 (% Vol)	CO2 % Vol	O2 % Vol	Lower Explosive Limit (% LEL)	Static Pressure (in INWC)	Comments
ATC-1D	5/10/2022 9:36	0.0	0.7	15.4	0.0	-8.08	
ATC-1S	5/10/2022 9:34	0.0	0.2	19.9	0.0	0.01	
ATC-6D	5/10/2022 12:43	0.0	0.8	5.7	0.0	0.63	
ATC-6S	5/10/2022 12:41	0.0	0.2	20.5	0.0	1.68	
ATC-8D	5/10/2022 12:30	0.0	0.4	17.5	0.0	-1.22	
ATC-8S	5/10/2022 12:29	0.0	1.8	15.1	0.0	0	
GP-11A	5/10/2022 9:22	0.0	0.6	17.9	0.0	0.04	
GP-11B	5/10/2022 9:24	0.0	0.2	19.7	0.0	-1.41	
GP-11C	5/10/2022 9:25	0.0	0.2	19.8	0.0	-1.3	
GP-11D	5/10/2022 9:27	0.0	0.2	19.7	0.0	0.03	
GP-12A	5/10/2022 10:13	0.0	0.2	20.9	0.0	-0.07	
GP-12B	5/10/2022 10:15	0.0	0.2	21.0	0.0	-0.04	
GP-12C	5/10/2022 10:16	0.0	0.3	18.3	0.0	-16.61	
GP-12D	5/10/2022 10:17	0.0	0.2	21.0	0.0	-1.82	
GP-13A	5/10/2022 10:00	0.0	0.2	20.5	0.0	-0.11	
GP-13B	5/10/2022 10:01	0.0	0.2	20.4	0.0	-0.11	
GP-13C	5/10/2022 10:03	0.0	0.2	20.7	0.0	-0.06	
GP-13D	5/10/2022 10:04	0.0	0.2	20.8	0.0	-3.8	
GP-14A	5/10/2022 10:24	0.0	0.2	21.0	0.0	-1.45	
GP-14B	5/10/2022 10:26	0.0	0.2	21.0	0.0	-1.56	
GP-15A	5/10/2022 12:10	0.0	0.2	20.0	0.0	0.05	
GP-15C	5/10/2022 12:15	0.0	0.4	18.7	0.0	0.02	
GP-15D	5/10/2022 12:16	0.0	0.2	19.8	0.0	-0.73	
GP-16A	5/10/2022 12:35	0.0	0.2	20.3	0.0	0.02	
GP-16B	5/10/2022 12:37	0.0	0.3	19.0	0.0	-1.42	
GP-16C	5/10/2022 12:38	0.0	0.2	20.4	0.0	-4.23	
GP-17A	5/10/2022 14:07	0.0	0.7	19.3	0.0	-1.38	
GP-17B	5/10/2022 14:10	0.0	0.8	17.6	0.0	-0.01	
GP-17C	5/10/2022 14:11	0.0	0.2	19.9	0.0	-3.41	
GP-18A	5/10/2022 14:15	0.0	0.2	19.8	0.0	-1.95	
GP-18B	5/10/2022 14:17	0.0	0.4	15.7	0.0	0.02	
GP-18C	5/10/2022 14:18	0.0	0.2	19.9	0.0	-3.21	
GP-19A	5/10/2022 14:22	0.0	0.2	20.0	0.0	0.01	
GP-19B	5/10/2022 14:24	0.0	0.7	16.2	0.0	0.04	
GP-19C	5/10/2022 14:25	0.0	0.2	20.1	0.0	-0.01	
GP-20A	5/10/2022 14:34	0.0	0.2	20.2	0.0	-0.01	
GP-20B	5/10/2022 14:36	0.0	0.4	14.6	0.0	0.09	
GP-20C	5/10/2022 14:37	0.0	0.3	19.1	0.0	0.02	
GP-21A	5/10/2022 14:40	0.0	0.4	19.9	0.0	0.03	
GP-21B	5/10/2022 14:42	0.0	0.2	11.5	0.0	0.03	
GP-21C	5/10/2022 14:43	0.0	0.2	20.2	0.0	-5.54	
GP-22A	5/10/2022 14:48	0.0	0.3	20.0	0.0	1.64	

CEDAR HILLS REGIONAL LANDFILL
Landfill Gas Compliance Probes
May 2022 Monitoring Data

Location ID	Date/Time	CH4 (% Vol)	CO2 % Vol	O2 % Vol	Lower Explosive Limit (% LEL)	Static Pressure (in INWC)	Comments
GP-22C	5/10/2022 14:50	0.0	1.1	8.4	0.0	-3.65	
GP-23A	5/10/2022 14:57	0.0	0.2	19.6	0.0	0.05	
GP-23B	5/10/2022 14:58	0.0	0.2	19.7	0.0	0.02	
GP-23C	5/10/2022 15:00	0.0	0.2	19.8	0.0	-0.51	
GP-24A	5/10/2022 15:05	0.0	0.6	18.9	0.0	0.12	
GP-24B	5/10/2022 15:07	0.0	2.0	14.2	0.0	0.08	
GP-25	5/10/2022 15:11	0.0	3.2	12.8	0.0	-2.88	
GP-26	5/10/2022 15:16	0.0	0.8	18.4	0.0	0.08	
GP-27	5/10/2022 15:20	0.0	7.4	8.2	0.0	0.05	
GP-29A	5/10/2022 15:25	0.0	2.2	16.1	0.0	0.1	
GP-29B	5/10/2022 15:26	0.0	0.9	19.6	0.0	0.11	
GP-30A	5/10/2022 7:15	0.0	3.0	15.6	0.0	-6.46	
GP-30B	5/10/2022 7:17	0.0	1.5	18.8	0.0	-1.74	
GP-31A	5/10/2022 7:21	0.0	1.0	19.1	0.0	-11.65	
GP-31B	5/10/2022 7:23	0.0	0.3	20.2	0.0	-1.35	
GP-31C	5/10/2022 7:24	0.0	0.2	20.8	0.0	0.18	
GP-32A	5/10/2022 7:28	0.0	1.3	18.6	0.0	0.01	
GP-32B	5/10/2022 7:29	0.0	0.4	20.7	0.0	-0.05	
GP-32C	5/10/2022 7:31	0.0	0.5	20.7	0.0	-0.1	
GP-33A	5/10/2022 7:34	0.0	0.4	20.9	0.0	0.01	
GP-33B	5/10/2022 7:36	0.0	0.2	21.0	0.0	0.3	
GP-33C	5/10/2022 7:37	0.0	0.2	21.0	0.0	-2.3	
GP-34A	5/10/2022 7:40	0.0	0.2	21.0	0.0	15.3	
GP-34B	5/10/2022 7:42	0.0	0.2	21.0	0.0	0.01	
GP-34C	5/10/2022 7:43	0.0	0.2	21.0	0.0	-3.09	
GP-35A	5/10/2022 7:48	0.0	0.2	21.0	0.0	-0.43	
GP-35B	5/10/2022 7:49	0.0	0.2	21.0	0.0	0.06	
GP-35C	5/10/2022 7:51	0.0	0.2	21.5	0.0	-0.84	
GP-36A	5/10/2022 7:57	0.0	0.2	20.7	0.0	-0.02	
GP-36B	5/10/2022 8:05	0.0	0.3	20.7	0.0	0.01	
GP-36C	5/10/2022 8:06	0.0	0.4	17.0	0.0	-1.86	
GP-37A	5/10/2022 8:09	0.0	0.3	14.3	0.0	-0.19	
GP-37B	5/10/2022 8:12	0.0	0.2	20.6	0.0	-0.7	
GP-37C	5/10/2022 8:13	0.0	0.8	3.7	0.0	-3.82	
GP-39	5/10/2022 8:26	0.0	1.7	16.9	0.0	-0.02	
GP-40	5/10/2022 8:33	0.0	0.2	16.2	0.0	0.07	
GP-41A	5/10/2022 8:37	0.0	0.2	20.2	0.0	0.06	
GP-41B	5/10/2022 8:39	0.0	0.2	20.2	0.0	-0.05	
GP-41C	5/10/2022 8:40	0.0	0.2	20.3	0.0	0.09	
GP-42A	5/10/2022 8:44	0.0	0.2	20.4	0.0	-7.36	
GP-42B	5/10/2022 8:46	0.0	1.0	16.2	0.0	-3.24	
GP-43A	5/10/2022 8:53	0.0	0.6	18.6	0.0	-0.25	
GP-43B	5/10/2022 8:54	0.0	0.4	20.0	0.0	-0.17	
GP-43C	5/10/2022 8:56	0.0	0.2	20.1	0.0	-9.53	
GP-44A	5/10/2022 9:01	0.0	0.4	20.1	0.0	0.06	
GP-44B	5/10/2022 9:03	0.0	0.4	18.2	0.0	-0.59	
GP-44C	5/10/2022 9:04	0.0	0.2	20.1	0.0	-0.16	
GP-45D	5/10/2022 9:18	0.0	0.2	19.7	0.0	-1.61	
GP-45I	5/10/2022 9:16	0.0	0.2	19.8	0.0	0	
GP-45S	5/10/2022 9:12	0.0	0.2	20.0	0.0	-1.21	

CEDAR HILLS REGIONAL LANDFILL
Landfill Gas Compliance Probes
June 2022 Monitoring Data

Location ID	Date/Time	CH4 (% Vol)	CO2 % Vol	O2 % Vol	Lower Explosive Limit (% LEL)	Static Pressure (in INWC)	Comments
ATC-1D	6/24/2022 10:38	0.0	0.0	20.9	0.0	0.01	
ATC-1S	6/24/2022 10:37	0.0	0.0	20.9	0.0	-0.01	
ATC-6D	6/24/2022 12:32	0.0	0.8	7.9	0.0	0.08	
ATC-6S	6/24/2022 12:31	0.0	0.3	20.3	0.0	0.15	
ATC-8D	6/24/2022 12:25	0.0	4.7	14.5	0.0	0.05	
ATC-8S	6/24/2022 12:24	0.0	0.5	19.6	0.0	0.08	
GP-11A	6/24/2022 10:25	0.0	0.0	20.6	0	0.02	
GP-11B	6/24/2022 10:26	0.0	0.0	20.6	0	-0.08	
GP-11C	6/24/2022 10:27	0.0	0.0	20.6	0	-0.08	
GP-11D	6/24/2022 10:28	0.0	0.0	20.7	0	0.05	
GP-12A	6/24/2022 10:45	0.0	0.1	21.0	0	-0.02	
GP-12B	6/24/2022 10:45	0.0	0.0	21.0	0	-0.03	
GP-12C	6/24/2022 11:18	0.0	0.0	21.0	0	-0.12	
GP-12D	6/24/2022 11:54	0.0	0.6	9.7	0	-1.57	
GP-13A	6/24/2022 11:57	0.0	0.2	19.9	0	0.04	
GP-13B	6/24/2022 11:58	0.0	0.2	20.1	0	0.01	
GP-13C	6/24/2022 11:59	0.0	0.2	20.1	0	-0.03	
GP-13D	6/24/2022 12:00	0.0	0.2	20.2	0	-0.96	
GP-14A	6/24/2022 12:03	0.0	0.2	20.3	0	-0.01	
GP-14B	6/24/2022 12:04	0.0	0.2	20.3	0	-0.36	
GP-15A	6/30/2022 10:48	0.0	0.1	20.6	0	0.03	
GP-15C	6/30/2022 10:50	0.0	0.6	17.7	0	0.07	
GP-15D	6/30/2022 10:51	0.0	0.1	20.5	0	-0.77	
GP-16A	6/24/2022 12:27	0.0	0.3	20.3	0	0.12	
GP-16B	6/24/2022 12:27	0.0	0.3	20.4	0	-0.96	
GP-16C	6/24/2022 12:28	0.0	0.2	20.4	0	-1.05	
GP-17A	6/24/2022 14:10	0.0	0.0	0.0	0	0	
GP-17B	6/24/2022 14:11	0.0	0.7	18.5	0	0.12	
GP-17C	6/24/2022 14:12	0.0	0.2	20.5	0	-0.71	
GP-18A	6/24/2022 14:15	0.0	0.2	20.4	0	0.21	
GP-18B	6/24/2022 14:16	0.0	0.3	18.7	0	0.14	
GP-18C	6/24/2022 14:17	0.0	0.2	20.2	0	-0.43	
GP-19A	6/24/2022 14:20	0.0	0.2	20.3	0	0.19	
GP-19B	6/24/2022 14:21	0.0	0.6	16.4	0	0.22	
GP-19C	6/24/2022 14:21	0.0	0.2	20.2	0	0.18	
GP-20A	6/24/2022 14:23	0.0	0.2	20.2	0	0.21	
GP-20B	6/24/2022 14:24	0.0	0.4	18.6	0	0.2	
GP-20C	6/24/2022 14:26	0.0	0.6	14.8	0	0.1	
GP-21A	6/24/2022 14:28	0.0	0.2	20.1	0	0.22	
GP-21B	6/24/2022 14:29	0.0	0.2	11.0	0	0.17	
GP-21C	6/24/2022 14:30	0.0	0.3	20.0	0	0.14	
GP-22A	6/24/2022 14:33	0.0	0.5	20.0	0	-6.1	
GP-22C	6/24/2022 14:34	0.0	1.0	4.6	0	0.22	
GP-23A	6/24/2022 14:37	0.0	0.2	20.3	0	0.89	

CEDAR HILLS REGIONAL LANDFILL
Landfill Gas Compliance Probes
June 2022 Monitoring Data

Location ID	Date/Time	CH4 (% Vol)	CO2 % Vol	O2 % Vol	Lower Explosive Limit (% LEL)	Static Pressure (in INWC)	Comments
GP-23B	6/24/2022 14:38	0.0	0.2	20.4	0	0.2	
GP-23C	6/24/2022 14:39	0.0	0.2	20.4	0	-0.05	
GP-24A	6/24/2022 14:42	0.0	6.1	5.3	0	0.23	
GP-24B	6/24/2022 14:44	0.0	0.7	19.8	0	0.24	
GP-25	6/24/2022 14:46	0.0	4.7	11.0	0	0.23	
GP-26	6/24/2022 14:48	0.0	0.6	19.5	0	0.23	
GP-27	6/24/2022 14:51	0.0	9.3	6.4	0	0.23	
GP-29A	6/24/2022 14:55	0.0	3.8	13.0	0	0.23	
GP-29B	6/24/2022 14:56	0.0	0.9	20.0	0	0.13	
GP-30A	6/24/2022 7:32	0.0	2.6	16.6	0	-0.01	
GP-30B	6/24/2022 7:34	0.0	0.4	20.2	0	-0.76	
GP-31A	6/24/2022 7:37	0.0	0.1	20.6	0	-0.27	
GP-31B	6/24/2022 7:38	0.0	0.1	20.5	0	-0.48	
GP-31C	6/24/2022 7:39	0.0	0.1	20.7	0	-0.01	
GP-32A	6/24/2022 7:41	0.0	0.1	20.8	0	0.02	
GP-32B	6/24/2022 7:44	0.0	0.2	20.7	0	0	
GP-32C	6/24/2022 7:45	0.0	0.1	20.8	0	-0.02	
GP-33A	6/24/2022 9:14	0.0	2.3	16.3	0	0.03	
GP-33B	6/24/2022 9:15	0.0	0.1	21.0	0	0.04	
GP-33C	6/24/2022 9:16	0.0	0.1	21.0	0	-0.91	
GP-34A	6/24/2022 9:18	0.0	0.0	0.0	0	0	
GP-34B	6/24/2022 9:20	0.0	0.1	20.9	0	0.05	
GP-34C	6/24/2022 9:20	0.0	0.1	20.9	0	-0.76	
GP-35A	6/24/2022 9:22	0.0	0.3	20.7	0	0.07	
GP-35B	6/24/2022 9:23	0.0	0.1	20.9	0	0.07	
GP-35C	6/24/2022 9:24	0.0	0.1	20.8	0	0.05	
GP-36A	6/24/2022 9:26	0.0	0.2	20.3	0	0.07	
GP-36B	6/24/2022 9:28	0.0	0.0	0.0	0	0	
GP-36C	6/24/2022 9:29	0.0	0.2	20.6	0	-0.02	
GP-37A	6/24/2022 9:34	0.0	0.0	0.0	0	0	
GP-37B	6/24/2022 9:35	0.0	0.1	20.8	0	0.08	
GP-37C	6/24/2022 9:39	0.0	0.1	20.2	0	-0.59	
GP-39	6/24/2022 9:45	0.0	1.1	18.5	0	0.09	
GP-40	6/24/2022 9:48	0.0	0.1	16.1	0	0.1	
GP-41A	6/24/2022 9:52	0.0	0.1	20.8	0	0.12	
GP-41B	6/24/2022 9:53	0.0	0.1	20.5	0	0.13	
GP-41C	6/24/2022 9:54	0.0	0.1	20.8	0	0.14	
GP-42A	6/24/2022 9:57	0.0	0.0	0.0	0	0	
GP-42B	6/24/2022 10:02	0.0	0.6	18.9	0	-0.26	
GP-43A	6/24/2022 10:05	0.0	0.0	0.0	0	0	
GP-43B	6/24/2022 10:07	0.0	0.0	20.3	0	-0.01	
GP-43C	6/24/2022 10:08	0.0	0.1	20.2	0	-2.19	
GP-44A	6/24/2022 10:14	0.0	0.0	20.2	0	0.01	
GP-44B	6/24/2022 10:15	0.0	0.2	18.4	0	-0.5	
GP-44C	6/24/2022 10:16	0.0	0.0	20.2	0	0.04	
GP-45D	6/24/2022 10:24	0.0	0.0	20.6	0	-0.36	
GP-45I	6/24/2022 10:23	0.0	0.0	20.5	0	-0.01	
GP-45S	6/24/2022 10:22	0.0	0.0	20.4	0	0	

Interior Probes

CEDAR HILLS REGIONAL LANDFILL
Landfill Gas Interior Probes
April 2022 Monitoring Data

Location ID	Date/Time	CH4 (% Vol)	CO2 (% Vol)	O2 (% Vol)	Lower Explosive Limit (% LEL)	Static Pressure (in INWC)	Comments
ATC-3D	4/7/2022 10:02	0.0	0.1	20.2	0	0.01	
ATC-3S	4/7/2022 10:01	0.0	0.1	20.2	0	0.06	
GP-1A	4/6/2022 20:56	0.0	0.1	21.0	0	0.00	
GP-1B	4/6/2022 20:58	0.0	0.1	21.0	0	0.00	
GP-2A	4/6/2022 21:20	0.0	6.4	9.0	0	-0.04	
GP-2B	4/6/2022 21:22	0.0	0.1	21.0	0	-0.08	
GP-3	4/6/2022 21:42	0.0	1.0	20.4	0	0.12	
GP-46D	4/6/2022 21:53	0.0	0.1	21.0	0	-1.43	
GP-46I	4/6/2022 21:51	0.0	0.1	21.0	0	-1.35	
GP-46S	4/6/2022 21:49	0.0	0.1	21.0	0	-0.14	
GP-47D	4/7/2022 11:02	0	0.2	19.3	0	0.36	
GP-47I	4/7/2022 11:01	55.9	21.5	1.1	>>>>	-0.12	
GP-47S	4/7/2022 11:00	0	0.1	19.8	0	-0.2	
GP-48D	4/6/2022 22:05	0.0	0.1	21.0	0	-2.86	
GP-48I	4/6/2022 22:03	0.0	0.2	20.9	0	-0.11	
GP-48S	4/6/2022 22:01	0.0	0.1	20.6	0	-0.04	
GP-4A	4/6/2022 21:30	0.0	0.1	21.0	0	-0.09	
GP-4B	4/6/2022 21:32	0.0	0.1	21.0	0	-0.06	
GP-52	4/7/2022 10:51	0.0	0.1	20.0	0	-0.05	
GP-53	4/7/2022 10:52	0.0	0.2	19.5	0	0.03	
GP-54	4/7/2022 10:53	0.0	0.1	19.9	0	0.04	
GP-55	4/6/2022 20:43	0.0	0.4	20.8	0	-0.13	
GP-56	4/6/2022 20:41	0.0	0.3	20.6	0	-0.07	
GP-57	4/6/2022 20:36	56.5	24.3	0.4	>>>>	-8.90	
GP-58	4/6/2022 20:35	0.0	12.8	16.7	0	-17.35	
GP-59	4/6/2022 20:31	0.0	0.1	20.8	0	-0.63	
GP-5A	4/7/2022 9:51	0.0	0.1	20.4	0	-2.75	
GP-5BA	4/7/2022 9:54	0.0	0.2	20.1	0	0.2	

CEDAR HILLS REGIONAL LANDFILL
Landfill Gas Interior Probes
April 2022 Monitoring Data

Location ID	Date/Time	CH4 (% Vol)	CO2 (% Vol)	O2 (% Vol)	Lower Explosive Limit (% LEL)	Static Pressure (in INWC)	Comments
GP-5BB	4/7/2022 9:55	0.0	0.1	20.4	0	-2.75	
GP-5BC	4/7/2022 9:56	0.0	0.1	20.4	0	-2.77	
GP-5BD	4/7/2022 9:57	0.0	0.1	20.4	0	-2.05	
GP-60	4/6/2022 20:29	0.0	0.1	20.9	0	-0.21	
GP-61	4/6/2022 20:17	0.0	0.1	20.7	0	-1.10	
GP-62	4/6/2022 20:15	0.0	2.6	17.1	0	-0.02	
GP-63A	4/7/2022 10:15	0.0	0.2	20.0	0	0.11	
GP-63B	4/7/2022 10:16	0.0	0.1	19.6	0	0.13	
GP-63C	4/7/2022 10:17	0.0	0.1	20.1	0	-0.96	
GP-64A	4/7/2022 10:37	0.0	0.4	19.4	0	0.3	
GP-64B	4/7/2022 10:38	0.0	0.4	19.7	0	0.06	
GP-64C	4/7/2022 10:39	0.0	0.1	20.0	0	-1.69	
GP-6A	4/6/2022 21:03	0.0	0.1	21.0	0	-4.13	
GP-6B	4/6/2022 21:04	0.0	0.1	21.0	0	-3.23	
GP-6C	4/6/2022 21:06	0.0	0.1	21.0	0	-3.12	
GP-6D	4/6/2022 21:08	0.0	0.1	21.0	0	-3.75	
GP-6E	4/6/2022 21:09	0.0	0.1	21.0	0	-3.24	
GP-6F	4/6/2022 21:11	0.0	0.1	21.0	0	-3.22	
GP-6G	4/6/2022 21:13	0.0	0.1	21.0	0	-3.20	
GP-6H	4/6/2022 21:14	0.0	0.1	21.0	0	-3.78	
GP-7	4/6/2022 20:53	0.0	0.1	21.0	0	-2.95	
GP-8	4/6/2022 20:47	0.0	0.6	20.3	0	-2.97	
GP-9	4/6/2022 20:23	0.0	0.1	20.7	0	-2.97	
GP-B4-1	4/6/2022 21:36	0.0	6.2	11.4	0	-3.38	
GP-B4-2	4/6/2022 21:38	0.0	0.1	21.0	0	-2.40	

CEDAR HILLS REGIONAL LANDFILL

Landfill Gas Interior Probes

May 2022 Monitoring Data

Location ID	Date/Time	CH4 (% Vol)	CO2 (% Vol)	O2 (% Vol)	Lower Explosive Limit (% LEL)	Static Pressure (in INWC)	Comments
ATC-3D	5/10/2022 12:06	0.0	0.2	20.1	0	-0.09	
ATC-3S	5/10/2022 12:05	0.0	0.2	20.0	0	-0.01	
GP-1A	5/11/2022 23:34	0.0	0.1	21.0	0.0	-0.09	
GP-1B	5/11/2022 23:36	0.0	0.1	21.0	0.0	-0.10	
GP-2A	5/11/2022 23:57	0.0	6.9	15.3	0.0	-0.19	
GP-2B	5/11/2022 23:59	0.0	0.2	21.0	0.0	-0.20	
GP-3	5/12/2022 0:31	0.0	1.9	20.3	0.0	-0.52	
GP-46D	5/12/2022 0:23	0.0	0.1	21.0	0.0	-0.83	
GP-46I	5/12/2022 0:21	0.0	0.1	21.0	0.0	-0.67	
GP-46S	5/12/2022 0:20	0.0	0.1	21.0	0.0	-0.15	
GP-47D	5/10/2022 13:12	0.0	0.6	20.1	0	0.22	
GP-47I	5/10/2022 13:11	56.6	20.8	0.3	>>>>	-3.67	
GP-47S	5/10/2022 13:09	0.0	0.2	21.1	0	-3.7	
GP-48D	5/12/2022 0:40	0.0	0.1	21.0	0.0	-1.74	
GP-48I	5/12/2022 0:38	0.0	0.3	21.0	0.0	-0.08	
GP-48S	5/12/2022 0:36	0.0	0.5	19.2	0.0	-0.14	
GP-4A	5/12/2022 0:04	0.0	0.1	21.0	0.0	-0.17	
GP-4B	5/12/2022 0:06	0.0	0.1	21.0	0.0	-0.01	
GP-52	5/10/2022 13:19	0.0	0.2	21.0	0	-0.09	
GP-53	5/10/2022 13:20	0.0	0.4	20.0	0	-1.14	
GP-54	5/10/2022 13:18	0.0	0.2	21.0	0	-0.04	
GP-55	5/11/2022 23:19	0.0	0.5	21.0	0.0	-0.16	
GP-56	5/11/2022 23:22	0.0	0.2	21.0	0.0	-0.05	
GP-57	5/11/2022 23:11	59.5	25.3	0.3	>>>>	-8.99	
GP-58	5/11/2022 23:13	0.0	12.0	17.5	0.0	-14.72	

CEDAR HILLS REGIONAL LANDFILL
Landfill Gas Interior Probes
May 2022 Monitoring Data

Location ID	Date/Time	CH4 (% Vol)	CO2 (% Vol)	O2 (% Vol)	Lower Explosive Limit (% LEL)	Static Pressure (in INWC)	Comments
GP-59	5/11/2022 23:03	0.0	0.1	21.0	0.0	-0.29	
GP-5A	5/10/2022 11:57	0.0	0.2	20.1	0	-4.51	
GP-5BA	5/10/2022 10:34	0.0	0.4	20.3	0	-0.08	
GP-5BB	5/10/2022 11:53	0.0	0.2	20.0	0	-4.54	
GP-5BC	5/10/2022 11:54	0.0	0.2	20.0	0	-4.52	
GP-5BD	5/10/2022 11:55	0.0	0.2	20.1	0	-4.53	
GP-60	5/11/2022 23:06	0.0	0.2	21.0	0.0	-0.01	
GP-61	5/11/2022 22:46	0.0	0.1	20.8	0.0	-1.28	
GP-62	5/11/2022 22:50	0.0	2.3	19.2	0.0	-0.05	
GP-63A	5/10/2022 12:22	0.0	0.3	19.4	0.0	0.07	
GP-63B	5/10/2022 12:23	0.0	0.2	19.4	0.0	0.07	
GP-63C	5/10/2022 12:25	0.0	0.2	19.6	0.0	-4.14	
GP-64A	5/10/2022 12:46	0.0	0.7	19.8	0.0	-0.02	
GP-64B	5/10/2022 12:48	0.0	0.2	20.8	0.0	-4.09	
GP-64C	5/10/2022 12:49	0	0.2	20.8	0	-0.06	
GP-6A	5/11/2022 23:41	0.0	0.1	21.0	0.0	-3.05	
GP-6B	5/11/2022 23:43	0.0	0.1	21.0	0.0	-2.22	
GP-6C	5/11/2022 23:44	0.0	0.1	21.0	0.0	-2.10	
GP-6D	5/11/2022 23:46	0.0	0.1	21.0	0.0	-2.72	
GP-6E	5/11/2022 23:48	0.0	0.1	21.0	0.0	-2.21	
GP-6F	5/11/2022 23:49	0.0	0.1	21.0	0.0	-2.14	
GP-6G	5/11/2022 23:51	0.0	0.1	21.0	0.0	-2.20	
GP-6H	5/11/2022 23:53	0.0	0.1	21.0	0.0	-2.76	
GP-7	5/11/2022 23:31	0.0	0.1	21	0	-1.96	
GP-8	5/11/2022 23:27	0.0	0.1	21	0	-1.96	
GP-9	5/11/2022 22:56	0.0	0.1	21	0	-1.98	
GP-B4-1	5/12/2022 0:11	0.0	2.3	19.3	0	-2	
GP-B4-2	5/12/2022 0:13	0.0	0.1	21	0	-1.65	

CEDAR HILLS REGIONAL LANDFILL

Landfill Gas Interior Probes

June 2022 Monitoring Data

Location ID	Date/Time	CH4 (% Vol)	CO2 (% Vol)	O2 (% Vol)	Lower Explosive Limit (% LEL)	Static Pressure (in INWC)	Comments
ATC-3D	6/30/2022 10:45	0	0.3	20.1	0	-0.02	
ATC-3S	6/30/2022 10:43	0	0.6	20	0	0.01	
GP-1A	6/5/2022 22:11	0.0	0.1	21.0	0	0.02	
GP-1B	6/5/2022 22:13	0.0	0.1	21.0	0	0	
GP-2A	6/5/2022 22:35	0.0	10.9	3.5	0	0.06	
GP-2B	6/5/2022 22:37	0.0	0.1	21.0	0	-0.08	
GP-3	6/5/2022 22:54	0.0	4.4	15.8	0	-0.04	
GP-46D	6/5/2022 23:01	0.0	0.1	21.0	0	-2.07	
GP-46I	6/5/2022 22:59	18.4	1.2	0.2	>>>>	0.03	
GP-46S	6/5/2022 22:58	0.0	0.1	19.9	0	-0.22	
GP-47D	6/24/2022 12:52	0	1	17.7	0	0.12	
GP-47I	6/24/2022 12:51	39.3	19.2	1.7	>>>>	-0.48	
GP-47S	6/24/2022 12:50	0	0.2	20.4	0	-0.3	
GP-48D	6/5/2022 23:11	0.0	0.1	21.0	0	-1.12	
GP-48I	6/5/2022 23:10	0.5	0.4	21.0	10	-0.15	
GP-48S	6/5/2022 23:08	0.0	0.8	16.1	0	-0.14	
GP-4A	6/5/2022 22:43	0.0	0.1	21.0	0	0.03	
GP-4B	6/5/2022 22:45	0.0	0.1	21.0	0	-0.02	
GP-52	6/24/2022 12:44	0	0.2	20.4	0	0.18	
GP-53	6/24/2022 12:45	0	0.4	19.7	0	0.09	
GP-54	6/24/2022 12:46	0	0.2	20.3	0	0.15	
GP-55	6/5/2022 21:56	21.4	12.9	4.7	>>>>	-0.08	
GP-56	6/5/2022 21:54	0.0	0.4	20.7	0	0	
GP-57	6/5/2022 21:50	45.7	23.6	0.5	>>>>	-9.98	
GP-58	6/5/2022 21:48	0.0	0.0	0.0	0	-11.26	
GP-59	6/5/2022 21:44	0.0	0.4	20.8	0	-0.57	
GP-5A	6/24/2022 12:08	0	0.2	20.4	0	-1.84	
GP-5BA	6/24/2022 12:10	0	0.4	20.2	0	0.1	
GP-5BB	6/24/2022 12:11	0	0.2	20.4	0	-1.84	

CEDAR HILLS REGIONAL LANDFILL
Landfill Gas Interior Probes
June 2022 Monitoring Data

Location ID	Date/Time	CH4 (% Vol)	CO2 (% Vol)	O2 (% Vol)	Lower Explosive Limit (% LEL)	Static Pressure (in INWC)	Comments
GP-5BC	6/24/2022 12:12	0	0.2	20.5	0	-1.81	
GP-5BD	6/24/2022 12:13	0	0.2	20.5	0	-1.51	
GP-60	6/5/2022 21:42	0.0	0.1	20.9	0	0.01	
GP-61	6/5/2022 21:32	0.0	0.1	20.7	0	-0.48	
GP-62	6/5/2022 21:30	0.0	2.2	18.4	0	-0.01	
GP-63A	6/24/2022 12:18	0	0.4	20.4	0	0.12	
GP-63B	6/24/2022 12:19	0	0.3	19.7	0	0.11	
GP-63C	6/24/2022 12:20	0	0.2	20.5	0	-0.93	
GP-64A	6/24/2022 12:36	0	0.4	20.2	0	0.17	
GP-64B	6/24/2022 12:38	0	0.7	19.7	0	0.15	
GP-64C	6/24/2022 12:39	0	0.2	20.3	0	-1.17	
GP-6A	6/5/2022 22:17	0.0	1.6	9.8	0	-1.28	
GP-6B	6/5/2022 22:18	0.0	2.1	11.1	0	-1.3	
GP-6C	6/5/2022 22:20	0.0	0.7	17.3	0	-1.18	
GP-6D	6/5/2022 22:22	0.0	0.1	21.0	0	-1.97	
GP-6E	6/5/2022 22:24	0.0	0.3	20.5	0	-1.44	
GP-6F	6/5/2022 22:26	0.0	1.7	9.3	0	-1.32	
GP-6G	6/5/2022 22:28	0.0	0.1	21.0	0	-1.41	
GP-6H	6/5/2022 22:30	0.0	0.1	21.0	0	-2.01	
GP-7	6/5/2022 22:07	0.0	1.5	17.0	0	-1.76	
GP-8	6/5/2022 22:01	0.0	0.2	21.0	0	-1.78	
GP-9	6/5/2022 21:37	0.0	2.7	11.2	0	-1.7	
GP-B4-1	6/5/2022 22:49	0.0	4.1	17.3	0	-2.83	
GP-B4-2	6/5/2022 22:51	0.0	0.1	21.0	0	-1.71	

Migration Probes

CEDAR HILLS REGIONAL LANDFILL

West Perimeter Landfill Gas Migration Control Probes

Second Quarter 2022 Monitoring Data

Probe ID	Date	Time	Barometric			Static		Comments
			Pressure in Hg	CH4 %vol	CO2 %vol	O2 %vol	Pressure in INWC	
MGPW 1700	4/10/2022	10:15am	29.91	0.1	0.2	20.6	-0.05	
MGPW 1700	4/25/2022	1:59pm	29.96	0.2	0.2	19.4	-0.12	
MGPW 1700	5/11/2022	12:30pm	30.07	0	0.1	19.7	-0.32	
MGPW 1700	5/17/2022	5:59pm	30.15	0	0.2	20.9	0.01	
MGPW 1700	6/4/2022	1:43PM	29.69	0.2	0.3	19.9	0.08	
MGPW 1700	6/24/2022	3:47PM	30.08	0	0.3	19.5	0.03	
MGPW 1708	4/10/2022	10:24am	29.91	0.4	0.7	19.8	0.04	
MGPW 1708	4/25/2022	2:16pm	29.96	0	0.3	19.6	-1.03	
MGPW 1708	5/11/2022	12:32pm	30.07	0	0	19.7	-1.23	
MGPW 1708	5/17/2022	5:49pm	30.15	0	0.1	20.9	-0.96	
MGPW 1708	6/4/2022	1:55PM	29.69	0	0.4	18.7	0.033	
MGPW 1708	6/24/2022	3:38PM	30.08	0	0.2	19.7	-0.74	
MGPW 1710S	4/10/2022	10:40am	29.91	0	2.8	16.4	-0.32	
MGPW 1710S	4/25/2022	2:29pm	29.96	0	0.1	21	-0.94	
MGPW 1710S	5/11/2022	12:34pm	30.07	0	0	19.9	-1.11	
MGPW 1710S	5/17/2022	5:45pm	30.15	0	0.1	20.9	-0.95	
MGPW 1710S	6/4/2022	2:08PM	29.69	0	0.1	20	0.02	
MGPW 1710S	6/24/2022	3:30PM	30.08	0	0.2	19.7	-0.68	
MGPW 1710D	4/10/2022	10:38am	29.91	0	0.2	20.9	-0.03	
MGPW 1710D	4/25/2022	2:27pm	29.96	0	0.2	20.2	-0.92	
MGPW 1710D	5/11/2022	12:36pm	30.07	0	0	19.8	-1.2	
MGPW 1710D	5/17/2022	5:43pm	30.15	0	0.2	20.8	-0.95	
MGPW 1710D	6/4/2022	2:21PM	29.69	0	0.2	20	0.26	
MGPW 1710D	6/24/2022	3:30PM	30.08	0	0.1	19.9	-0.86	
MGPW 1714	4/10/2022	10:45am	29.91	0	3.9	13.4	-0.26	
MGPW 1714	4/25/2022	2:35pm	29.96	0	0.3	20.2	-0.93	
MGPW 1714	5/11/2022	12:38pm	30.07	0	0	20.1	-1.12	
MGPW 1714	5/17/2022	5:39pm	30.15	0	0.2	20.7	-0.92	
MGPW 1714	6/4/2022	2:26PM	29.69	0	0.3	19.6	0.21	
MGPW 1714	6/24/2022	3:26PM	30.08	0	0.2	19.9	-0.69	

On-Site Building Monitoring

**SECOND QUARTER
BUILDING MONITORING**



King County

INSTRUMENT: Place check by instrument used :

WEATHER:

DATE: 05/31/22

Foxboro TVA 2020

Sunny

TECH: DNS

SEM 5000 ×

ENVIS ID	BLDG #	DESCRIPTION	CH ₄ (ppm)	REMARKS	BAR PRESS (in. Hg)	TIME
GOC- 05/31/22	1	FRONT OFFICE				
GCR- 05/31/22	2	CONF ROOM			30	8:56 PM
GAO- 05/31/22	3	PAYROLL OFFICE				
GEO- 05/31/22	4	ENGR. OFFICE				
GLRC- 05/31/22	5	LUNCHROOM				
GSPC 05/31/22		SPOC				
GELO- 05/31/22	A 6A	DRY STORAGE		PARTIALLY BLOCKED		
GELO- 05/31/22	B 6B	ELECTRICIAN OFFICE				
GAP- 05/31/22		ACCOUNT PAYABLE				
GSO- 05/31/22	A 7A	SHOP OFFICE		PARTIALLY BLOCKED		
GPR- 05/31/22	B 7B	PARTS ROOM				
GMS- 05/31/22	C 7C	SHOP PIT AREA/BAY				
GTB- 05/31/22	D 7D	SHOP TIRE BAY				
GEW- 05/31/22	E 7E	EAST WELD SHOP				
GWW- 05/31/22	F 7F	WEST WELD SHOP				
GCS- 05/31/22	8	CARPENTER'S		PARTIALLY BLOCKED		
GSS- 05/31/22	9	WASTEWATER		PARTIALLY BLOCKED		
GSS- 05/31/22	B 9B	CARPENTER/STORAGE	N/A	BUILDING REMOVED		
GSH- 05/31/22	10	SCALEHOUSE				
GB13- 05/31/22	13	WW COMPRESSOR				
GB16- 05/31/22	16	GENERATOR				
GB19- 05/31/22	19	LEPS (P.S.# 5)				
GB19- 05/31/22	B 19B	LEPS/H2O2 ROOM	N/A	BUILDING REMOVED		
GB20- 05/31/22	20	LEPS ELEC PANALS				
GB21- 05/31/22	21	STORAGE(OLD PS 1)	N/A	BUFFERED AREA		
GB22- 05/31/22	22	STORAGE/N FLARE				
GB23- 05/31/22	23	LFGAS				
GB24- 05/31/22	24	NE GENERATOR BLDG				
GBWW- 05/31/22	30	WOMEN BRK RM		PARTIALLY BLOCKED		
GPWT- 05/31/22	PW	PRESSURE WASH RM				
GBRR- 05/31/22	RR	TRUCKWASH RR W				
GBSS- 05/31/22	SS	TRUCKWASH RR E				
GBZZ- 05/31/22	29	MANAGERS TRAILER				
GBPT- 05/31/22		CCG FASTER				
GCLS- 05/31/22		CHLORINE SHED				

Third Quarter 2022

Landfill Gas Monitoring Data

Compliance Probes

CEDAR HILLS REGIONAL LANDFILL

Landfill Gas Compliance Probes

July 2022 Monitoring Data

Location ID	Date/Time	CH4 (% Vol)	CO2 (% Vol)	O2 (% Vol)	Lower Explosive Limit (% LEL)	Static Pressure (in INWC)	Comments
ATC-1D	7/11/2022 10:37	0.0	0.0	20.7	0.0	0.03	
ATC-1S	7/11/2022 10:35	0.0	0.6	19.3	0.0	0.02	
ATC-6D	7/11/2022 9:41	0.0	0.2	18.9	0.0	-0.01	
ATC-6S	7/11/2022 9:40	0.0	1.9	17.3	0.0	-0.05	
ATC-8D	7/11/2022 9:36	0.0	3.5	15.8	0.0	-0.02	
ATC-8S	7/11/2022 9:34	0.0	0.2	19.4	0.0	0.02	
GP-11A	7/11/2022 11:10	0.0	0.2	20.7	0	0.06	
GP-11B	7/11/2022 11:12	0.0	0.0	21.0	0	0.01	
GP-11C	7/11/2022 11:13	0.0	0.0	21.0	0	0.85	
GP-11D	7/11/2022 11:14	0.0	0.1	20.9	0	0.36	
GP-12A	7/11/2022 10:53	0.0	0.0	20.9	0	0.5	
GP-12B	7/11/2022 10:54	0.0	0.0	20.9	0	0	
GP-12C	7/11/2022 10:56	0.0	0.1	18.9	0	-11.56	
GP-12D	7/11/2022 10:57	0.0	0.1	20.8	0	0.02	
GP-13A	7/11/2022 10:42	0.0	2.6	15.6	0	0.03	
GP-13B	7/11/2022 10:44	0.0	0.0	0.0	0	0	NR Pressure
GP-13C	7/11/2022 10:46	0.0	0.0	20.9	0	-0.01	
GP-13D	7/11/2022 10:49	0.0	0.0	21.0	0	-0.33	
GP-14A	7/11/2022 11:03	0.0	0.0	21.0	0	-0.12	
GP-14B	7/11/2022 11:04	0.0	0.0	21.0	0	-0.26	
GP-15A	7/11/2022 10:03	0.0	0.0	20.5	0	-0.01	
GP-15C	7/11/2022 10:05	0.0	0.6	16.7	0	0.12	
GP-15D	7/11/2022 10:07	0.0	0.0	20.5	0	-0.11	
GP-16A	7/11/2022 9:28	0.0	4.4	7.2	0	0.02	
GP-16B	7/11/2022 9:29	0.0	0.1	20.0	0	0.02	
GP-16C	7/11/2022 9:31	0.0	0.1	20.1	0	-1	
GP-17A	7/11/2022 14:04	0.0	0.0	0.0	0	0	NR H2O
GP-17B	7/11/2022 14:05	0.0	0.6	17.4	0	0.02	
GP-17C	7/11/2022 14:07	0.0	0.0	20.1	0	0.73	
GP-18A	7/11/2022 14:13	0.0	1.7	11.6	0	0.01	
GP-18B	7/11/2022 14:15	0.0	0.2	13.7	0	0.37	
GP-18C	7/11/2022 14:16	0.0	0.0	20.1	0	0.52	
GP-19A	7/11/2022 14:21	0.0	0.0	20.3	0	-0.02	
GP-19B	7/11/2022 14:22	0.0	0.5	15.5	0	0.47	
GP-19C	7/11/2022 14:23	0.0	0.0	20.4	0	0.11	
GP-20A	7/11/2022 14:27	0.0	0.0	20.4	0	-0.03	
GP-20B	7/11/2022 14:29	0.0	0.2	18.2	0	0.02	
GP-20C	7/11/2022 14:30	0.0	0.1	6.0	0	0.17	
GP-21A	7/11/2022 14:33	0.0	0.1	20.0	0	0.03	
GP-21B	7/11/2022 14:35	0.0	0.1	9.3	0	0	
GP-21C	7/11/2022 14:36	0.0	0.0	0.0	0	0	NR Pressure

CEDAR HILLS REGIONAL LANDFILL
Landfill Gas Compliance Probes
July 2022 Monitoring Data

Location ID	Date/Time	CH4 (% Vol)	CO2 (% Vol)	O2 (% Vol)	Lower Explosive Limit (% LEL)	Static Pressure (in INWC)	Comments
GP-22A	7/11/2022 14:39	0.0	2.3	11.1	0	0	
GP-22C	7/11/2022 14:41	0.0	1.0	2.7	0	0.69	
GP-23A	7/11/2022 13:06	0.0	0.0	20.2	0	0	
GP-23B	7/11/2022 13:08	0.0	0.0	20.2	0	0.05	
GP-23C	7/11/2022 13:10	0.0	0.0	20.2	0	0.01	
GP-24A	7/11/2022 13:14	0.0	6.8	8.7	0	0.03	
GP-24B	7/11/2022 13:15	0.0	1.7	13.6	0	-0.03	
GP-25	7/11/2022 13:01	0.0	4.1	12.2	0	0	
GP-26	7/11/2022 12:58	0.0	0.4	19.4	0	0.12	
GP-27	7/11/2022 12:44	0.0	9.4	6.1	0	0.9	
GP-29A	7/11/2022 12:49	0.0	2.1	16.2	0	0	
GP-29B	7/11/2022 12:51	0.0	0.6	19.7	0	0.01	
GP-30A	7/11/2022 7:02	0.0	1.9	17.2	0	0.01	
GP-30B	7/11/2022 7:04	0.0	0.2	20.0	0	0.02	
GP-31A	7/11/2022 6:52	0.0	0.0	0.0	0	0	NR H2O
GP-31B	7/11/2022 6:54	0.0	0.3	18.0	0	0.09	
GP-31C	7/11/2022 6:55	0.0	0.1	20.5	0	0.04	
GP-32A	7/11/2022 7:10	0.0	0.3	20.4	0	0.01	
GP-32B	7/11/2022 7:11	0.0	0.1	20.5	0	0.01	
GP-32C	7/11/2022 7:13	0.0	0.2	20.4	0	0.01	
GP-33A	7/11/2022 7:22	0.0	3.0	15.6	0	0.03	
GP-33B	7/11/2022 7:24	0.0	0.1	20.6	0	-0.01	
GP-33C	7/11/2022 7:25	0.0	0.1	20.6	0	-0.02	
GP-34A	7/11/2022 7:29	0.0	0.0	0.0	0	0	NR H2O
GP-34B	7/11/2022 7:31	0.0	0.1	20.6	0	0.04	
GP-34C	7/11/2022 7:33	0.0	0.1	20.7	0	-1.01	
GP-35A	7/11/2022 7:37	0.0	0.5	20.4	0	0	
GP-35B	7/11/2022 7:39	0.0	0.1	20.7	0	0	
GP-35C	7/11/2022 7:40	0.0	0.1	20.7	0	0	
GP-36A	7/11/2022 7:44	0.0	0.3	5.5	0	0.47	
GP-36B	7/11/2022 7:45	0.0	0.0	0.0	0	0	NR H2O
GP-36C	7/11/2022 7:46	0.0	0.2	13.0	0	-0.01	
GP-37A	7/11/2022 7:52	0.0	0.0	0.0	0	0	NR H2O
GP-37B	7/11/2022 7:53	0.0	0.0	0.0	0	0	NR Pressure
GP-37C	7/11/2022 7:54	0.0	0.5	3.2	0	-1.01	
GP-39	7/11/2022 8:01	0.0	1.9	16.7	0	0	
GP-40	7/11/2022 8:05	0.0	0.1	15.4	0	-0.01	
GP-41A	7/11/2022 8:21	0.0	0.1	20.5	0	-0.03	
GP-41B	7/11/2022 8:23	0.0	0.1	20.4	0	0	
GP-41C	7/11/2022 8:25	0.0	0.1	20.5	0	-0.02	
GP-42A	7/11/2022 8:28	0.0	0.0	0.0	0	0	NR Pressure

CEDAR HILLS REGIONAL LANDFILL
Landfill Gas Compliance Probes
July 2022 Monitoring Data

Location ID	Date/Time	CH4 (% Vol)	CO2 (% Vol)	O2 (% Vol)	Lower Explosive Limit (% LEL)	Static Pressure (in INWC)	Comments
GP-42B	7/11/2022 8:29	0.0	1.0	16.2	0	0.01	
GP-43A	7/11/2022 8:41	0.0	0.3	18.5	0	-0.01	
GP-43B	7/11/2022 8:42	0.0	0.1	20.3	0	-0.01	
GP-43C	7/11/2022 8:44	0.0	0.1	20.4	0	-0.73	
GP-44A	7/11/2022 8:49	0.0	0.1	20.3	0	-0.07	
GP-44B	7/11/2022 8:51	0.0	0.2	20.2	0	0.6	
GP-44C	7/11/2022 8:53	0.0	0.0	20.3	0	0.02	
GP-45D	7/11/2022 11:20	0.0	0.0	21.0	0	0.47	
GP-45I	7/11/2022 11:18	0.0	0.0	21.0	0	0.01	
GP-45S	7/11/2022 11:16	0.0	0.0	21.0	0	0.77	

CEDAR HILLS REGIONAL LANDFILL
Landfill Gas Compliance Probes
August 2022 Monitoring Data

Location ID	Date/Time	CH4 (% Vol)	CO2 (% Vol)	O2 (% Vol)	Lower Explosive Limit (% LEL)	Static Pressure (in INWC)	Comments
ATC-1D	8/17/2022 13:00	0.0	0.0	20.4	0.0	-0.13	
ATC-1S	8/17/2022 12:59	0.0	2.1	18.8	0.0	-0.11	
ATC-6D	8/17/2022 14:15	0.0	0.2	19.4	0.0	-0.06	
ATC-6S	8/17/2022 14:14	0.0	1.5	19.0	0.0	-0.12	
ATC-8D	8/17/2022 14:25	0.0	1.8	18.7	0.0	-0.01	
ATC-8S	8/17/2022 14:23	0.0	0.1	18.5	0.0	0.06	
GP-11A	8/17/2022 12:46	0.0	1.5	18.6	0.0	-0.04	
GP-11B	8/17/2022 12:47	0.0	0.1	20.5	0.0	0	
GP-11C	8/17/2022 12:48	0.0	0.1	20.5	0.0	0.53	
GP-11D	8/17/2022 12:50	0.0	0.1	20.5	0.0	-0.06	
GP-12A	8/17/2022 13:18	0.0	0.2	19.8	0.0	-0.09	
GP-12B	8/17/2022 13:20	0.0	0.0	20.2	0.0	-0.12	
GP-12C	8/17/2022 13:22	0.0	0.1	18.1	0.0	-7.21	
GP-12D	8/17/2022 13:24	0.0	0.1	19.9	0.0	0.24	
GP-13A	8/17/2022 13:07	0.0	1.8	19.0	0.0	-0.08	
GP-13B	8/17/2022 13:08	0.0	0.0	20.4	0.0	-0.11	
GP-13C	8/17/2022 13:10	0.0	0.0	20.4	0.0	0	
GP-13D	8/17/2022 13:11	0.0	0.1	20.3	0.0	0.71	
GP-14A	8/17/2022 13:30	0.0	0.0	19.7	0.0	0.29	
GP-14B	8/17/2022 13:32	0.0	0.0	20.2	0.0	0.09	
GP-15A	8/17/2022 13:58	0.0	0.1	19.8	0.0	-0.05	
GP-15C	8/17/2022 13:59	0.0	0.5	15.5	0.0	0.15	
GP-15D	8/17/2022 14:01	0.0	0.0	20.0	0.0	-1.24	
GP-16A	8/17/2022 14:18	0.0	2.9	18.0	0.0	-0.06	
GP-16B	8/17/2022 14:19	0.0	0.0	20.0	0.0	0.11	
GP-16C	8/17/2022 14:21	0.0	0.0	20.1	0.0	0.91	
GP-17A	8/17/2022 7:42	0.0	3.5	12.7	0.0	0.01	
GP-17B	8/17/2022 7:44	0.0	0.7	18.1	0.0	0.03	
GP-17C	8/17/2022 7:45	0.0	0.1	20.9	0.0	0.07	
GP-18A	8/17/2022 7:49	0.0	2.9	17.0	0.0	-0.01	
GP-18B	8/17/2022 7:51	0.0	0.3	14.6	0.0	0.04	
GP-18C	8/17/2022 7:52	0.0	0.1	19.1	0.0	-0.01	
GP-19A	8/17/2022 7:58	0.0	1.2	18.9	0.0	0	
GP-19B	8/17/2022 8:00	0.0	0.6	16.3	0.0	-0.06	
GP-19C	8/17/2022 8:01	0.0	0.1	20.9	0.0	0.03	
GP-20A	8/17/2022 8:10	0.0	1.9	18.9	0.0	-0.07	
GP-20B	8/17/2022 8:12	0.0	0.3	18.4	0.0	-0.15	
GP-20C	8/17/2022 8:13	0.0	0.2	7.4	0.0	-0.03	

CEDAR HILLS REGIONAL LANDFILL
Landfill Gas Compliance Probes
August 2022 Monitoring Data

Location ID	Date/Time	CH4 (% Vol)	CO2 (% Vol)	O2 (% Vol)	Lower Explosive Limit (% LEL)	Static Pressure (in INWC)	Comments
GP-21A	8/17/2022 8:23	0.0	0.1	20.7	0.0	-0.06	
GP-21B	8/17/2022 8:24	0.0	0.1	10.1	0.0	-0.07	
GP-21C	8/17/2022 8:25	0.0	1.1	14.2	0.0	-4.18	Pump Fail
GP-22A	8/17/2022 8:29	0.0	2.6	15.7	0.0	-0.06	
GP-22C	8/17/2022 8:31	0.0	0.9	3.5	0.0	0.04	
GP-23A	8/17/2022 8:38	0.0	0.1	20.9	0.0	-0.06	
GP-23B	8/17/2022 8:39	0.0	0.1	21.0	0.0	-0.12	
GP-23C	8/17/2022 8:40	0.0	0.1	21.0	0.0	-0.12	
GP-24A	8/17/2022 8:46	0.0	6.3	13.4	0.0	-0.05	
GP-24B	8/17/2022 8:47	0.0	0.1	21.0	0.0	-0.25	
GP-25	8/17/2022 8:51	0.0	3.9	17.8	0.0	-0.1	
GP-26	8/17/2022 8:54	0.0	0.4	20.8	0.0	-0.19	
GP-27	8/17/2022 8:59	0.0	9.7	11.6	0.0	-0.09	
GP-29A	8/17/2022 9:14	0.0	1.4	19.3	0.0	-0.08	
GP-29B	8/17/2022 9:16	0.0	0.6	20.6	0.0	-0.08	
GP-30A	8/17/2022 9:32	0.0	0.6	20.7	0.0	-0.11	
GP-30B	8/17/2022 9:33	0.0	0.2	20.9	0.0	-0.37	
GP-31A	8/17/2022 9:40	0.7	12.5	0.5	14.0	-0.25	
GP-31B	8/17/2022 9:41	0.0	0.3	17.2	0.0	-0.34	
GP-31C	8/17/2022 9:42	0.0	0.1	20.9	0.0	-0.13	
GP-32A	8/17/2022 9:45	0.0	0.3	20.8	0.0	-0.13	
GP-32B	8/17/2022 9:47	0.0	0.2	20.8	0.0	-0.15	
GP-32C	8/17/2022 9:48	0.0	0.3	20.7	0.0	-0.18	
GP-33A	8/17/2022 9:52	0.0	3.0	18.0	0.0	-0.14	
GP-33B	8/17/2022 9:53	0.0	0.5	19.0	0.0	-0.2	
GP-33C	8/17/2022 9:56	0.0	0.1	20.9	0.0	-0.14	
GP-34A	8/17/2022 10:09	0.2	0.5	10.5	4.0	0.2	
GP-34B	8/17/2022 10:10	0.0	0.2	20.7	0.0	0	
GP-34C	8/17/2022 10:12	0.0	0.1	20.2	0.0	0.16	
GP-35A	8/17/2022 10:16	0.0	11.8	1.9	0.0	0.12	
GP-35B	8/17/2022 10:18	0.0	0.1	20.8	0.0	-0.07	
GP-35C	8/17/2022 10:19	0.0	0.1	20.8	0.0	-0.16	
GP-36A	8/17/2022 10:23	0.0	1.0	20.1	0.0	-0.1	
GP-36B	8/17/2022 10:24	0.0	3.9	15.0	0.0	0.08	
GP-36C	8/17/2022 10:26	0.0	0.3	8.7	0.0	0.13	
GP-37A	8/17/2022 10:31	0.0	0.4	9.2	0.0	-0.08	Pump Fail
GP-37B	8/17/2022 10:32	0.0	0.4	16.9	0.0	0.46	Pump Fail
GP-37C	8/17/2022 10:34	0.0	0.5	0.7	0.0	0.69	

CEDAR HILLS REGIONAL LANDFILL
Landfill Gas Compliance Probes
August 2022 Monitoring Data

Location ID	Date/Time	CH4 (% Vol)	CO2 % Vol	O2 % Vol	Lower Explosive Limit (% LEL)	Static Pressure (in INWC)	Comments
GP-39	8/17/2022 10:41	0.0	2.1	18.4	0.0	0.03	
GP-40	8/17/2022 10:46	0.0	0.0	14.7	0.0	0.05	
GP-41A	8/17/2022 10:56	0.0	4.1	14.8	0.0	0.02	
GP-41B	8/17/2022 10:58	0.0	0.9	5.1	0.0	0.08	
GP-41C	8/17/2022 10:59	0.0	0.1	20.4	0.0	-0.08	
GP-42A	8/17/2022 11:04	0.0	4.0	14.2	0.0	-0.52	
GP-42B	8/17/2022 11:06	0.0	1.0	16.5	0.0	0.33	
GP-43A	8/17/2022 11:16	0.0	0.5	18.2	0.0	0.19	Pump Fail
GP-43B	8/17/2022 11:17	0.0	0.1	20.5	0.0	0.05	Pump Fail
GP-43C	8/17/2022 11:19	0.0	0.1	20.3	0.0	0.1	
GP-44A	8/17/2022 11:27	0.0	10.8	0.8	0.0	-0.04	
GP-44B	8/17/2022 11:28	0.0	0.2	20.2	0.0	0.14	
GP-44C	8/17/2022 11:30	0.0	0.0	20.9	0.0	-0.11	
GP-45D	8/17/2022 12:39	0.0	0.0	21.2	0.0	0.48	
GP-45I	8/17/2022 12:37	0.0	0.0	21.2	0.0	0.05	
GP-45S	8/17/2022 12:36	0.0	0.1	21.2	0.0	0	

CEDAR HILLS REGIONAL LANDFILL
Landfill Gas Compliance Probes
September 2022 Monitoring Data

Location ID	Date/Time	CH4 (% Vol)	CO2 (% Vol)	O2 (% Vol)	Lower Explosive Limit (% LEL)	Static Pressure (in INWC)	Comments
ATC-1D	9/15/2022 9:11	0.0	0.0	21.0	0.0	-0.06	
ATC-1S	9/15/2022 9:10	0.0	0.8	20.6	0.0	-0.04	
ATC-6D	9/15/2022 10:32	0.0	0.2	20.4	0.0	0.01	
ATC-6S	9/15/2022 10:31	0.0	0.7	20.3	0.0	-0.02	
ATC-8D	9/15/2022 10:22	0.0	0.9	20.0	0.0	-0.01	
ATC-8S	9/15/2022 10:21	0.0	0.1	20.6	0.0	-0.14	
GP-11A	9/15/2022 8:59	0.0	0.9	20.4	0	0.04	
GP-11B	9/15/2022 9:01	0.0	0.1	21.0	0	-0.62	
GP-11C	9/15/2022 9:02	0.0	0.0	21.0	0	-0.78	
GP-11D	9/15/2022 9:04	0.0	0.1	20.9	0	0.02	
GP-12A	9/15/2022 9:26	0.0	0.1	20.6	0	0	
GP-12B	9/15/2022 9:27	0.0	0.0	20.7	0	-0.03	
GP-12C	9/15/2022 9:29	0.0	0.1	20.3	0	0.01	
GP-12D	9/15/2022 9:30	0.0	0.0	20.7	0	-0.1	
GP-13A	9/15/2022 9:16	0.0	1.5	19.6	0	-0.04	
GP-13B	9/15/2022 9:18	0.0	0.1	20.6	0	-0.09	
GP-13C	9/15/2022 9:20	0.0	0.0	20.7	0	0.02	
GP-13D	9/15/2022 9:22	0.0	0.0	20.7	0	-1.5	
GP-14A	9/15/2022 9:36	0.0	0.0	20.6	0	-0.46	
GP-14B	9/15/2022 9:38	0.0	0.0	20.7	0	-0.53	
GP-15A	9/15/2022 9:58	0.0	3.1	11.9	0	-0.01	
GP-15C	9/15/2022 10:00	0.0	0.3	18.8	0	-0.41	
GP-15D	9/15/2022 10:01	0.0	0.1	20.5	0	-1.34	
GP-16A	9/15/2022 10:25	0.0	1.4	19.7	0	-0.02	
GP-16B	9/15/2022 10:27	0.0	0.1	20.6	0	-1.95	
GP-16C	9/15/2022 10:28	0.0	0.1	20.7	0	-1.59	
GP-17A	9/15/2022 10:54	0.0	3.1	16.9	0	0	
GP-17B	9/15/2022 10:55	0.0	0.5	18.1	0	-0.07	
GP-17C	9/15/2022 10:56	0.0	0.1	20.5	0	-1.5	
GP-18A	9/15/2022 10:59	0.0	2.6	18.1	0	0.44	
GP-18B	9/15/2022 11:00	0.0	0.2	17.2	0	0.01	
GP-18C	9/15/2022 11:03	0.0	0.1	20.0	0	-1.62	
GP-19A	9/15/2022 11:05	0.0	1.2	18.2	0	0.05	
GP-19B	9/15/2022 11:06	0.0	0.5	16.3	0	-0.01	
GP-19C	9/15/2022 11:07	0.0	0.0	20.5	0	0.81	
GP-20A	9/15/2022 11:10	0.0	0.1	20.5	0	0.01	
GP-20B	9/15/2022 11:11	0.0	0.2	17.7	0	0.02	
GP-20C	9/15/2022 11:13	0.0	0.2	12.5	0	0.01	
GP-21A	9/15/2022 11:15	0.0	0.3	20.1	0	0.02	

CEDAR HILLS REGIONAL LANDFILL
Landfill Gas Compliance Probes
September 2022 Monitoring Data

Location ID	Date/Time	CH4 (% Vol)	CO2 (% Vol)	O2 (% Vol)	Lower Explosive Limit (% LEL)	Static Pressure (in INWC)	Comments
GP-21B	9/15/2022 11:17	0.0	0.1	10.2	0	0.04	
GP-21C	9/15/2022 11:18	0.0	0.6	16.5	0	-0.22	
GP-22A	9/15/2022 11:22	0.0	2.1	18.5	0	0.01	
GP-22C	9/15/2022 11:23	0.0	0.3	6.5	0	-1.5	
GP-23A	9/15/2022 11:28	0.0	0.1	20.2	0	-0.07	
GP-23B	9/15/2022 11:29	0.0	0.0	20.4	0	0.27	
GP-23C	9/15/2022 11:30	0.0	0.0	20.4	0	0.03	
GP-24A	9/15/2022 11:33	0.0	4.9	15.4	0	-0.02	
GP-24B	9/15/2022 11:35	0.0	0.1	20.3	0	-0.45	
GP-25	9/15/2022 11:37	0.0	2.8	18.5	0	-0.15	
GP-26	9/15/2022 11:40	0.0	0.2	20.1	0	-0.9	
GP-27	9/15/2022 11:43	0.0	7.0	14.7	0	-0.01	
GP-29A	9/15/2022 11:48	0.0	1.6	19.0	0	-0.03	
GP-29B	9/15/2022 11:51	0.0	0.4	19.7	0	-0.03	
GP-30A	9/15/2022 7:19	0.0	0.3	20.3	0	0.08	
GP-30B	9/15/2022 7:21	0.0	1.0	19.4	0	-0.74	
GP-31A	9/15/2022 7:25	0.0	8.4	10.3	0	-0.68	
GP-31B	9/15/2022 7:27	0.0	0.2	19.2	0	-0.91	
GP-31C	9/15/2022 7:28	0.0	0.1	20.7	0	-0.03	
GP-32A	9/15/2022 7:31	0.0	0.1	20.8	0	-0.02	
GP-32B	9/15/2022 7:33	0.0	0.2	20.7	0	0	
GP-32C	9/15/2022 7:35	0.0	0.2	20.7	0	-0.06	
GP-33A	9/15/2022 7:38	0.0	2.0	19.1	0	-0.03	
GP-33B	9/15/2022 7:40	0.0	0.4	20.2	0	-0.08	
GP-33C	9/15/2022 7:42	0.0	0.1	20.9	0	-1.3	
GP-34A	9/15/2022 7:49	0.0	12.2	3.9	0	-0.11	
GP-34B	9/15/2022 7:51	0.0	0.1	20.8	0	-0.03	
GP-34C	9/15/2022 7:52	0.0	0.1	21.0	0	-1.21	
GP-35A	9/15/2022 7:57	0.0	7.3	11.4	0	-0.05	
GP-35B	9/15/2022 7:58	0.0	0.1	20.7	0	-0.08	
GP-35C	9/15/2022 8:00	0.0	0.1	20.8	0	-0.08	
GP-36A	9/15/2022 8:02	0.0	0.1	20.8	0	-1	
GP-36B	9/15/2022 8:04	0.0	3.5	18.1	0	-0.04	
GP-36C	9/15/2022 8:06	0.0	0.2	15.7	0	-0.71	
GP-37A	9/15/2022 8:09	0.0	1.7	17.8	0	-0.17	
GP-37B	9/15/2022 8:11	0.0	0.2	20.1	0	-0.1	
GP-37C	9/15/2022 8:14	0.0	0.4	5.2	0	-1.39	
GP-39	9/15/2022 8:19	0.0	0.9	19.1	0	0	
GP-40	9/15/2022 8:23	0.0	0.0	14.9	0	0.01	

CEDAR HILLS REGIONAL LANDFILL
Landfill Gas Compliance Probes
September 2022 Monitoring Data

Location ID	Date/Time	CH4 (% Vol)	CO2 (% Vol)	O2 (% Vol)	Lower Explosive Limit (% LEL)	Static Pressure (in INWC)	Comments
GP-41A	9/15/2022 8:27	0.0	4.0	15.7	0	0.01	
GP-41B	9/15/2022 8:29	0.0	0.9	5.9	0	-0.09	
GP-41C	9/15/2022 8:30	0.0	0.1	20.7	0	-0.03	
GP-42A	9/15/2022 8:34	0.0	3.8	15.5	0	-0.03	
GP-42B	9/15/2022 8:36	0.0	0.3	20.6	0	-0.86	
GP-43A	9/15/2022 8:40	0.0	0.1	20.8	0	0.01	
GP-43B	9/15/2022 8:41	0.0	0.0	20.8	0	-0.09	
GP-43C	9/15/2022 8:43	0.0	0.1	20.6	0	-0.08	
GP-44A	9/15/2022 8:46	0.0	8.2	10.5	0	-0.06	
GP-44B	9/15/2022 8:48	0.0	0.3	19.7	0	-0.3	
GP-44C	9/15/2022 8:49	0.0	0.1	20.8	0	-0.07	
GP-45D	9/15/2022 8:56	0.0	0.0	20.9	0	-0.74	
GP-45I	9/15/2022 8:55	0.0	0.0	20.9	0	-0.1	
GP-45S	9/15/2022 8:53	0.0	0.1	20.9	0	0	

Interior Probes

CEDAR HILLS REGIONAL LANDFILL
Landfill Gas Interior Probes
July 2022 Monitoring Data

Location ID	Date/Time	CH4 (% Vol)	CO2 (% Vol)	O2 (% Vol)	Lower Explosive Limit (% LEL)	Static Pressure (in INWC)	Comments
ATC-3D	7/11/2022 9:56	0.0	0.1	20.6	0	-1.72	
ATC-3S	7/11/2022 9:53	0.0	0.3	20.3	0	-0.04	
GP-1A	7/14/2022 23:52	0.0	0.5	20.6	0	-0.02	
GP-1B	7/14/2022 23:54	0.0	0.1	21.0	0	-0.09	
GP-2A	7/15/2022 0:19	0.0	8.8	11.5	0	-0.05	
GP-2B	7/15/2022 0:21	0.0	0.2	21.0	0	-0.17	
GP-3	7/15/2022 0:40	0.0	14.0	9.7	0	-0.06	
GP-46D	7/15/2022 0:51	0.0	0.1	21.0	0	-0.16	
GP-46I	7/15/2022 0:49	16.2	1.0	2.5 >>>>		-0.98	
GP-46S	7/15/2022 0:44	0.0	0.1	20.2	0	-0.08	
GP-47D	7/11/2022 11:31	0	0.8	17.2	0	-0.01	
GP-47I	7/11/2022 11:29	0	0.2	20.7	0	0.05	
GP-47S	7/11/2022 11:27	0	0	21	0	0	
GP-48D	7/15/2022 1:01	12.6	8.8	1.4 >>>>		0.25	
GP-48I	7/15/2022 0:59	0.0	0.5	16.8	0	-0.03	
GP-48S	7/15/2022 0:57	0.0	0.2	21.0	0	0.03	0
GP-4A	7/15/2022 0:26	0.0	0.1	21.0	0	-0.15	
GP-4B	7/15/2022 0:28	0.0	0.1	21.0	0	-0.06	
GP-52	7/11/2022 12:19	0.0	0.1	20.6	0	0.58	
GP-53	7/11/2022 12:21	0.0	0.3	19.3	0	0.8	
GP-54	7/11/2022 12:23	0.0	0.0	20.6	0	0.07	
GP-55	7/14/2022 23:36	0.0	0.2	20.8	0	0.00	
GP-56	7/14/2022 23:39	0.0	1.1	18.2	0	-0.26	
GP-57	7/14/2022 23:27	50.1	24.8	0.3 >>>>		-7.54	
GP-58	7/14/2022 23:30	0.0	0.0	0.0	0	0.00	
GP-59	7/14/2022 23:19	0.0	0.8	19.9	0	-0.04	
GP-5A	7/11/2022 10:28	0.0	0.0	20.6	0	-2.26	0
GP-5BA	7/11/2022 10:20	0.0	0.2	20.0	0	-0.01	
GP-5BB	7/11/2022 10:22	0.0	0.1	20.4	0	-2.23	
GP-5BC	7/11/2022 10:24	0.0	0.0	20.5	0	-2.25	
GP-5BD	7/11/2022 10:25	0.0	0.0	20.5	0	-1.52	
GP-60	7/14/2022 23:22	0.0	0.1	20.8	0	-0.13	
GP-61	7/14/2022 23:03	0.0	1.8	18.9	0	0.13	
GP-62	7/14/2022 23:06	0.0	2.1	18.7	0	-0.06	
GP-63A	7/11/2022 9:20	0.0	0.2	19.8	0	-0.01	
GP-63B	7/11/2022 9:22	0.0	0.1	19.9	0	0.01	
GP-63C	7/11/2022 9:24	0.0	0.0	20.1	0	0.01	
GP-64A	7/11/2022 9:45	0.0	0.3	20.3	0	0.03	
GP-64B	7/11/2022 9:47	0.0	0.3	19.7	0	0.08	
GP-64C	7/11/2022 9:49	0.0	0.1	20.6	0	-1.29	

CEDAR HILLS REGIONAL LANDFILL
Landfill Gas Interior Probes
July 2022 Monitoring Data

Location ID	Date/Time	CH4 (% Vol)	CO2 (% Vol)	O2 (% Vol)	Lower Explosive Limit (% LEL)	Static Pressure (in INWC)	Comments
GP-6A	7/14/2022 23:59	0.0	0.1	21.0	0	-0.48	0
GP-6B	7/15/2022 0:02	0.0	1.6	10.8	0	0.10	
GP-6C	7/15/2022 0:03	0.0	1.6	17.2	0	0.06	
GP-6D	7/15/2022 0:05	0.0	0.1	21.0	0	-0.45	
GP-6E	7/15/2022 0:07	0.0	0.1	21.0	0	0.02	
GP-6F	7/15/2022 0:09	0.0	0.1	21.0	0	-0.02	
GP-6G	7/15/2022 0:10	0.0	1.1	14.0	0	-0.13	
GP-6H	7/15/2022 0:12	0.0	0.1	21.0	0	-0.41	
GP-7	7/14/2022 23:48	0.0	0.1	21.0	0	-0.10	
GP-8	7/14/2022 23:43	0.0	0.3	18.5	0	-0.14	
GP-9	7/14/2022 23:13	0.0	0.2	20.5	0	-0.01	
GP-B4-1	7/15/2022 0:34	0.8	6.6	7.9	16	-0.70	
GP-B4-2	7/15/2022 0:36	0.0	0.2	21.0	0	-0.10	

CEDAR HILLS REGIONAL LANDFILL
Landfill Gas Interior Probes
August 2022 Monitoring Data

Location ID	Date/Time	CH4 (% Vol)	CO2 (% Vol)	O2 (% Vol)	Lower Explosive Limit (% LEL)	Static Pressure (in INWC)	Comments
ATC-3D	8/17/2022 13:53	0.0	0.6	18.1	0	0.29	
ATC-3S	8/17/2022 13:52	0.0	11.4	3.7	0	0.15	
GP-1A	8/17/2022 22:19	0.0	1.9	19.6	0.0	0.15	
GP-1B	8/17/2022 22:21	0.0	0.1	20.8	0.0	0.12	
GP-2A	8/17/2022 22:50	0.0	8.0	11.8	0.0	0.12	
GP-2B	8/17/2022 22:52	0.0	0.1	20.8	0.0	0.09	
GP-3	8/17/2022 23:11	0.0	12.1	12.1	0.0	0.11	
GP-46D	8/17/2022 23:22	0.0	0.1	21.0	0.0	1.02	
GP-46I	8/17/2022 23:20	3.2	0.2	18.4	64.0	1.15	
GP-46S	8/17/2022 23:18	0.0	0.1	20.2	0.0	0.14	
GP-47D	8/17/2022 14:41	0.0	1.1	15.7	0	-0.06	
GP-47I	8/17/2022 14:40	12.5	11.1	5.0	>>>>	1.73	
GP-47S	8/17/2022 14:39	44.4	17.3	0.1	>>>>	1.69	
GP-48D	8/17/2022 23:33	11.5	9.3	0.3	>>>>	0.66	
GP-48I	8/17/2022 23:31	0.0	0.2	20.8	0.0	0.03	
GP-48S	8/17/2022 23:35	0.0	0.3	18.4	0.0	0.05	
GP-4A	8/17/2022 22:59	0.0	6.9	16.1	0.0	0.12	
GP-4B	8/17/2022 23:01	0.0	0.1	20.9	0.0	0.12	
GP-52	8/17/2022 14:47	0.0	4.5	9.3	0	0.02	
GP-53	8/17/2022 14:49	0.0	0.2	19.3	0	0.29	
GP-54	8/17/2022 14:50	0.0	0.0	20.1	0	-0.08	
GP-55	8/17/2022 22:04	0.0	0.2	20.5	0.0	0.12	
GP-56	8/17/2022 22:02	0.0	1.9	17.0	0.0	0.05	
GP-57	8/17/2022 21:57	48.9	25.1	0.1	>>>>	-2.84	
GP-58	8/17/2022 21:54	1.2	28.7	0.0	24.0	0.05	
GP-59	8/17/2022 21:50	20.1	7.7	0.3	>>>>	0.62	
GP-5A	8/17/2022 13:40	0.0	0.0	20.3	0	0.67	
GP-5BA	8/17/2022 13:42	0.0	4.4	11.2	0	0.06	
GP-5BB	8/17/2022 13:44	0.0	0.1	20.3	0	0.59	
GP-5BC	8/17/2022 13:45	0.0	0.1	20.3	0	0.78	
GP-5BD	8/17/2022 13:47	0.0	0.9	9.4	0	0.81	
GP-60	8/17/2022 21:48	0.0	0.1	20.7	0.0	0.07	
GP-61	8/17/2022 21:36	0.0	1.7	19.8	0.0	0.61	
GP-62	8/17/2022 21:34	0.0	1.9	19.0	0.0	0.05	
GP-63A	8/17/2022 14:29	0.0	7.6	14.8	0.0	0.02	
GP-63B	8/17/2022 14:30	0.0	0.1	19.8	0.0	-0.01	
GP-63C	8/17/2022 14:32	0.0	0.0	20.0	0.0	0.30	
GP-64A	8/17/2022 14:06	0.0	0.3	19.7	0.0	0.17	

CEDAR HILLS REGIONAL LANDFILL
Landfill Gas Interior Probes
August 2022 Monitoring Data

Location ID	Date/Time	CH4 (% Vol)	CO2 (% Vol)	O2 (% Vol)	Lower Explosive Limit (% LEL)	Static Pressure (in INWC)	Comments
GP-64B	8/17/2022 14:08	0.0	1.9	14.5	0.0	-0.03	
GP-64C	8/17/2022 14:10	0	0.1	19.9	0	0.72	
GP-6A	8/17/2022 22:32	0.0	0.1	20.9	0.0	1.07	0
GP-6B	8/17/2022 22:34	0.0	0.1	20.9	0.0	1.54	
GP-6C	8/17/2022 22:36	0.0	0.8	16.9	0.0	1.46	
GP-6D	8/17/2022 22:37	0.0	0.2	20.2	0.0	0.97	
GP-6E	8/17/2022 22:39	0.0	0.1	20.9	0.0	1.24	
GP-6F	8/17/2022 22:41	0.0	0.1	21.0	0.0	1.49	
GP-6G	8/17/2022 22:43	0.0	1.1	13.9	0.0	1.52	
GP-6H	8/17/2022 22:45	0.0	0.1	21.0	0.0	1.35	
GP-7	8/17/2022 22:15	0.0	0.1	20.7	0	0.96	
GP-8	8/17/2022 22:10	0.0	0.5	17.1	0	1.04	
GP-9							
GP-B4-1	8/17/2022 23:06	5.5	12.1	0.1	>>>>	1.26	
GP-B4-2	8/17/2022 23:08	0.0	2.8	19.2	0	1.25	

CEDAR HILLS REGIONAL LANDFILL
Landfill Gas Interior Probes
September 2022 Monitoring Data

Location ID	Date/Time	CH4 (% Vol)	CO2 (% Vol)	O2 (% Vol)	Lower Explosive Limit (% LEL)	Static Pressure (in INWC)	Comments
ATC-3D	9/15/2022 9:55	0	1.2	17.4	0	-1.21	
ATC-3S	9/15/2022 9:53	0	13.2	5.1	0	0.01	
GP-1A	9/14/2022 23:38	0.0	1.4	20.1	0	0.02	
GP-1B	9/14/2022 23:39	0.0	0.1	21.0	0	-0.11	
GP-2A	9/15/2022 0:02	0.0	6.5	14.1	0	-0.18	
GP-2B	9/15/2022 0:04	0.0	0.1	21.0	0	-0.61	
GP-3	9/15/2022 0:23	0.0	14.0	9.3	0	-0.56	
GP-46D	9/15/2022 0:31	0.0	0.1	21.0	0	0	
GP-46I	9/15/2022 0:29	1.2	0.2	19.9	24	-0.44	
GP-46S	9/15/2022 0:27	0.0	0.1	20.8	0	-0.75	
GP-47D	9/15/2022 10:46	0	0.8	18.9	0	-0.05	
GP-47I	9/15/2022 10:45	22.2	10.1	10.7	>>>>	-0.9	
GP-47S	9/15/2022 10:43	0	0.1	20.7	0	0	
GP-48D	9/15/2022 0:40	7.5	2.1	15.8	>>>>	-0.02	
GP-48I	9/15/2022 0:38	0.0	0.2	21.0	0	-0.03	
GP-48S	9/15/2022 0:37	0.0	0.3	19.6	0	-0.08	
GP-4A	9/15/2022 0:09	0.0	5.6	16.0	0	-0.61	
GP-4B	9/15/2022 0:11	0.0	0.1	21.0	0	-0.01	
GP-52	9/15/2022 12:42	0	0.5	19.3	0	-0.06	
GP-53	9/15/2022 12:43	0	0.2	19.1	0	-0.2	
GP-54	9/15/2022 12:44	0	0.1	20.1	0	-0.04	
GP-55	9/14/2022 23:24	3.9	3.0	16.1	78	-0.02	
GP-56	9/14/2022 23:26	0.0	2.1	17.8	0	-0.77	
GP-57	9/14/2022 23:16	52.7	25.0	0.1	>>>>	-0.49	
GP-58	9/14/2022 23:18	0.0	17.1	4.6	0	-0.47	
GP-59	9/14/2022 23:09	6.2	3.3	16.5	>>>>	-0.63	
GP-5A	9/15/2022 9:42	0	0	20.7	0	-1.64	
GP-5BA	9/15/2022 9:44	0	2.6	17	0	0.02	
GP-5BB	9/15/2022 9:45	0	0.1	20.7	0	-1.65	
GP-5BC	9/15/2022 9:46	0	0.1	20.7	0	-1.72	
GP-5BD	9/15/2022 9:48	0	0	20.7	0	-1.69	
GP-60	9/14/2022 23:11	0.0	0.2	20.6	0	-0.49	
GP-61	9/14/2022 22:46	0.0	0.4	20.1	0	-0.48	
GP-62	9/14/2022 22:48	0.0	2.0	18.5	0	-0.46	
GP-63A	9/15/2022 10:13	0	4	17.9	0	-0.04	
GP-63B	9/15/2022 10:15	0	0.2	20.5	0	-0.03	
GP-63C	9/15/2022 10:17	0	0.1	20.6	0	-0.57	
GP-64A	9/15/2022 10:07	0	3.5	14.5	0	0.01	
GP-64B	9/15/2022 10:09	0	0.1	20.4	0	-0.08	

CEDAR HILLS REGIONAL LANDFILL
Landfill Gas Interior Probes
September 2022 Monitoring Data

Location ID	Date/Time	CH4 (% Vol)	CO2 (% Vol)	O2 (% Vol)	Lower Explosive Limit (% LEL)	Static Pressure (in INWC)	Comments
GP-64C	9/15/2022 10:10	0	0.1	20.6	0	-1.57	
GP-6A	9/14/2022 23:44	0.0	0.9	15.3	0	-0.62	
GP-6B	9/14/2022 23:46	0.0	2.3	7.0	0	-0.01	
GP-6C	9/14/2022 23:48	0.0	3.8	17.5	0	-0.01	
GP-6D	9/14/2022 23:50	0.0	2.0	10.1	0	-0.07	
GP-6E	9/14/2022 23:52	0.0	0.1	21.0	0	-0.02	
GP-6F	9/14/2022 23:54	0.0	0.6	15.6	0	-0.92	
GP-6G	9/14/2022 23:55	0.0	0.1	21.0	0	-0.57	
GP-6H	9/14/2022 23:57	0.0	3.1	2.8	0	-0.01	
GP-7	9/14/2022 23:34	0.0	2.1	11.6	0	-0.16	
GP-8	9/14/2022 23:31	0.0	0.1	21.0	0	-0.06	
GP-9	9/14/2022 22:54	0.0	0.5	18.9	0	-2.91	
GP-B4-1	9/15/2022 0:16	3.7	11.4	0.2	74	-0.08	
GP-B4-2	9/15/2022 0:18	0.0	1.1	20.9	0	-0.06	

Migration Probes

CEDAR HILLS REGIONAL LANDFILL
West Perimeter Landfill Gas Migration Control Probes
Third Quarter 2022 Monitoring Data

Probe ID	Date	Time	Barometric			Static	
			Pressure in Hg	CH4 %vol	CO2 %vol	O2 %vol	Pressure in INWC
MGPW 1700	7/6/2022	1p	29.89	0	0.3	20.1	0.15
MGPW 1700	7/18/2022	11:20AM	30.1	0	0.4	19.6	0.06
MGPW 1700	8/2/2022	2:12PM	29.98	0	0.1	19.8	0.04
MGPW 1708	7/6/2022	1:38PM	29.89	0	0.2	20.6	-0.88
MGPW 1708	7/18/2022	11:04AM	30.1	0	0.2	20.4	-1.97
MGPW 1708	8/2/2022	2:21pm	29.98	0	0.1	19.5	-0.9
MGPW 1710S	7/6/2022	1:23PM	29.89	0	0.3	20.3	-0.68
MGPW 1710S	7/18/2022	10:44AM	30.1	0	0.3	20.1	-1.90
MGPW 1710S	8/2/2022	2:31pm	29.98	0	0	19.4	-0.50
MGPW 1710D	7/6/2022	1:26pm	29.89	0	0.2	20.6	-0.89
MGPW 1710D	7/18/2022	10:48AM	30.1	0	0.2	20.4	-1.99
MGPW 1710D	8/2/2022	2:33pm	29.98	0	0	19.6	-0.8
MGPW 1714	7/6/2022	1:14pm	29.89	0	0.1	20.7	-0.92
MGPW 1714	7/18/2022	10:34AM	30.1	0	0.3	19.9	-1.97
MGPW 1714	8/2/2022	2:38pm	29.98	0	0.1	19.5	-0.7

On-Site Building Monitoring

**THIRD QUARTER
BUILDING MONITORING**



King County

INSTRUMENT: Place check by instrument used :

WEATHER:

DATE: 07/20/22

Foxboro TVA 2020

Sunny

TECH: SB

SEM 500 ×

ENVIS ID	BLDG #	DESCRIPTION	CH ₄ (ppm)	REMARKS	BAR PRESS (in. Hg)	TIME
GOC- 07/20/22	1	FRONT OFFICE				
GCR- 07/20/22	2	CONF ROOM			29.94	10:32PM
GAO- 07/20/22	3	PAYROLL OFFICE				
GEO- 07/20/22	4	ENGR. OFFICE				
GLRC- 07/20/22	5	LUNCHROOM				
GSPC 07/20/22		SPOC				
GELO- 07/20/22	A 6A	DRY STORAGE				
GELO- 07/20/22	B 6B	ELECTRICIAN OFFICE				
GAP- 07/20/22		ACCOUNT PAYABLE				
GSO- 07/20/22	A 7A	SHOP OFFICE				
GPR- 07/20/22	B 7B	PARTS ROOM				
GMS- 07/20/22	C 7C	SHOP PIT AREA/BAY				
GTB- 07/20/22	D 7D	SHOP TIRE BAY				
GEW- 07/20/22	E 7E	EAST WELD SHOP				
GWV- 07/20/22	F 7F	WEST WELD SHOP				
GCS- 07/20/22	8	CARPENTER'S				
GSS- 07/20/22	9	WASTEWATER				
GSS- 07/20/22	B 9B	CARPENTER/STORAGE	NA	REMOVED		
GSH- 07/20/22	10	SCALEHOUSE				
GB13- 07/20/22	13	WW COMPRESSOR				
GB16- 07/20/22	16	GENERATOR				
GB19- 07/20/22	19	LEPS (P.S.# 5)				
GB19- 07/20/22	B 19B	LEPS/H2O2 ROOM				
GB20- 07/20/22	20	LEPS ELEC PANALS				
GB21- 07/20/22	21	STORAGE(OLD PS 1)				
GB22- 07/20/22	22	STORAGE/N FLARE				
GB23- 07/20/22	23	LFGAS				
GB24- 07/20/22	24	NE GENERATOR BLDG				
GBWW-07/20/22	30	WOMEN BRK RM				
GPWT- 07/20/22	PW	PRESSURE WASH RM				
GBRR- 07/20/22	RR	TRUCKWASH RR W				
GBSS- 07/20/22	SS	TRUCKWASH RR E				
GBZZ- 07/20/22	29	MANAGERS TRAILER				
GBPT- 07/20/22		CCG FASTER				
GCLS- 07/20/22		CHLORINE SHED				

Fourth Quarter 2022

Landfill Gas Monitoring Data

Compliance Probes

CEDAR HILLS REGIONAL LANDFILL
Landfill Gas Compliance Probes
October 2022 Monitoring Data

Location ID	Date/Time	CH4 (% Vol)	CO2 (% Vol)	O2 (% Vol)	Lower Explosive Limit (% LEL)	Static Pressure (in INWC)	Comments
ATC-1D	10/9/2022 12:17	0.0	0.1	20.7	0.0	0.02	
ATC-1S	10/9/2022 12:16	0.0	1.1	20.2	0.0	0	
ATC-6D	10/11/2022 15:00	0.0	0.3	19.9	0.0	-0.12	
ATC-6S	10/11/2022 14:57	0.0	0.8	19.6	0.0	0.07	
ATC-8D	10/11/2022 14:45	0.0	1.1	19.5	0.0	0.08	
ATC-8S	10/11/2022 14:42	0.0	0.2	20.2	0.0	0.01	
GP-11A	10/9/2022 11:08	0.0	1.1	20.3	0.0	-0.01	
GP-11B	10/9/2022 11:10	0.0	0.1	20.9	0.0	-0.1	
GP-11C	10/9/2022 11:11	0.0	0.1	20.9	0.0	-0.18	
GP-11D	10/9/2022 11:12	0.0	0.1	20.8	0.0	0.09	
GP-12A	10/9/2022 12:23	0.0	1.0	20.0	0	0.1	
GP-12B	10/9/2022 12:24	0.0	0.1	20.7	0	1.15	
GP-12C	10/9/2022 12:26	0.0	0.2	20.0	0	0.1	
GP-12D	10/9/2022 12:28	0.0	0.1	20.8	0	-0.02	
GP-13A	10/9/2022 12:32	0.0	1.4	19.9	0	0.04	
GP-13B	10/9/2022 12:33	0.0	0.1	20.8	0	0.08	
GP-13C	10/9/2022 12:35	0.0	0.1	21.0	0	0.09	
GP-13D	10/9/2022 12:36	0.0	0.1	21.0	0	-0.57	
GP-14A	10/9/2022 12:44	0.0	0.1	21.0	0	-0.05	
GP-14B	10/9/2022 12:46	0.0	0.1	21.0	0	-0.11	
GP-15A	10/11/2022 14:15	0.0	5.3	8.6	0	0.05	
GP-15C	10/11/2022 14:17	0.0	0.6	17.8	0	0.05	
GP-15D	10/11/2022 14:19	0.0	0.2	20.2	0	-0.51	
GP-16A	10/11/2022 14:47	0.0	1.8	19.2	0	0.03	
GP-16B	10/11/2022 14:49	0.0	0.1	20.1	0	-2.94	
GP-16C	10/11/2022 14:51	0.0	0.1	20.1	0	-1	
GP-17A	10/9/2022 14:36	0.0	3.0	18.3	0	0.04	
GP-17B	10/9/2022 14:38	0.0	0.8	17.7	0	0.11	
GP-17C	10/9/2022 14:39	0.0	0.1	20.6	0	-0.02	
GP-18A	10/9/2022 14:43	0.0	2.5	18.5	0	0.06	
GP-18B	10/9/2022 14:44	0.0	0.3	18.0	0	0.39	
GP-18C	10/9/2022 14:45	0.0	0.2	20.3	0	0	
GP-19A	10/9/2022 14:49	0.0	1.4	18.8	0	0.1	
GP-19B	10/9/2022 14:51	0.0	0.7	16.2	0	0.03	
GP-19C	10/9/2022 14:52	0.0	0.1	20.7	0	0.08	
GP-20A	10/9/2022 14:57	0.0	1.0	20.1	0	0.03	
GP-20B	10/9/2022 14:58	0.0	0.2	20.6	0	0.13	
GP-20C	10/9/2022 15:00	0.0	0.3	11.6	0	0.19	
GP-21A	10/9/2022 15:03	0.0	0.8	19.8	0	0.06	
GP-21B	10/9/2022 15:04	0.0	0.2	10.6	0	0.02	
GP-21C	10/9/2022 15:05	0.0	0.2	15.0	0	0.46	
GP-22A	10/9/2022 15:11	0.0	2.8	18.8	0	0.08	
GP-22C	10/9/2022 15:12	0.0	0.3	7.7	0	0.2	

CEDAR HILLS REGIONAL LANDFILL
Landfill Gas Compliance Probes
October 2022 Monitoring Data

Location ID	Date/Time	CH4 (% Vol)	CO2 (% Vol)	O2 (% Vol)	Lower Explosive Limit (% LEL)	Static Pressure (in INWC)	Comments
GP-23A	10/9/2022 15:20	0.0	0.1	20.7	0	0.1	
GP-23B	10/9/2022 15:21	0.0	0.1	20.8	0	0	
GP-23C	10/9/2022 15:22	0.0	0.1	20.8	0	0.1	
GP-24A	10/9/2022 15:28	0.0	4.8	16.0	0	0.03	
GP-24B	10/9/2022 15:29	0.0	0.3	20.6	0	0.08	
GP-25	10/9/2022 15:33	0.0	2.6	19.3	0	0.08	
GP-26	10/9/2022 15:38	0.0	0.5	20.4	0	0.28	
GP-27	10/9/2022 15:49	0.0	6.3	15.6	0	0.11	
GP-29A	10/9/2022 15:57	0.0	1.2	19.9	0	0.11	
GP-29B	10/9/2022 15:58	0.0	0.3	20.7	0	0.12	
GP-30A	10/9/2022 8:45	0.0	0.6	20.6	0	0.01	
GP-30B	10/9/2022 8:46	0.0	1.4	19.7	0	-0.19	
GP-31A	10/9/2022 8:50	0.0	7.6	12.8	0	0.32	
GP-31B	10/9/2022 8:51	0.0	0.4	17.7	0	-0.36	
GP-31C	10/9/2022 8:53	0.0	1.7	18.9	0	-0.04	
GP-32A	10/9/2022 8:56	0.0	0.2	20.8	0	-0.01	
GP-32B	10/9/2022 8:57	0.0	0.3	20.8	0	0.04	
GP-32C	10/9/2022 8:59	0.0	0.4	20.7	0	0.12	
GP-33A	10/9/2022 9:05	0.0	2.4	19.4	0	0.11	
GP-33B	10/9/2022 9:07	0.0	0.6	20.6	0	0.02	
GP-33C	10/9/2022 9:08	0.0	0.2	21.0	0	-0.63	
GP-34A	10/9/2022 9:13	0.0	10.4	7.6	0	0.73	
GP-34B	10/9/2022 9:14	0.0	0.2	20.9	0	0.04	
GP-34C	10/9/2022 9:15	0.0	0.2	21.0	0	-0.57	
GP-35A	10/9/2022 9:22	0.0	4.6	17.1	0	0.04	
GP-35B	10/9/2022 9:23	0.0	0.2	21.0	0	0.06	
GP-35C	10/9/2022 9:24	0.0	0.2	21.0	0	0.04	
GP-36A	10/9/2022 9:29	0.0	0.5	20.8	0	-1.11	
GP-36B	10/9/2022 9:30	0.0	3.2	19.1	0	0.02	
GP-36C	10/9/2022 9:32	0.0	0.4	16.9	0	-0.36	
GP-37A	10/9/2022 9:40	0.0	2.0	18.5	0	0.09	
GP-37B	10/9/2022 9:41	0.0	0.6	19.3	0	0.64	
GP-37C	10/9/2022 9:42	0.0	0.6	2.9	0	-0.52	
GP-39	10/9/2022 9:59	0.0	1.4	19.4	0	0.03	
GP-40	10/9/2022 10:03	0.0	0.1	17.6	0	0.03	
GP-41A	10/9/2022 10:07	0.0	4.6	15.6	0	0.06	
GP-41B	10/9/2022 10:08	0.0	1.1	6.0	0	0.2	
GP-41C	10/9/2022 10:10	0.0	0.1	20.5	0	-0.03	
GP-42A	10/9/2022 10:15	0.0	3.7	16.0	0	0.19	
GP-42B	10/9/2022 10:17	0.0	0.5	19.7	0	-0.11	
GP-43A	10/9/2022 10:33	0.0	0.4	20.0	0	0.19	
GP-43B	10/9/2022 10:35	0.0	0.1	20.7	0	0	
GP-43C	10/9/2022 10:36	0.0	0.1	20.7	0	0.44	
GP-44A	10/9/2022 10:41	0.0	5.2	15.5	0	0.09	
GP-44B	10/9/2022 10:43	0.0	0.3	20.6	0	-0.2	
GP-44C	10/9/2022 10:44	0.0	0.1	20.8	0	-0.01	
GP-45D	10/9/2022 11:17	0.0	0.1	20.9	0	-0.1	
GP-45I	10/9/2022 11:15	0.0	0.1	20.9	0	0.11	
GP-45S	10/9/2022 11:14	0.0	0.1	20.8	0	0.09	

CEDAR HILLS REGIONAL LANDFILL
Landfill Gas Compliance Probes
November 2022 Monitoring Data

Location ID	Date/Time	CH4 (% Vol)	CO2 (% Vol)	O2 (% Vol)	Lower Explosive Limit (% LEL)	Static Pressure (in INWC)	Comments
ATC-1D	11/9/2022 10:54	0.0	0.2	20.8	0.0	-0.18	
ATC-1S	11/9/2022 10:52	0.0	1.3	19.8	0.0	-0.06	
ATC-6D	11/9/2022 12:03	0.0	0.3	20.1	0.0	-0.11	
ATC-6S	11/9/2022 12:01	0.0	0.9	19.5	0.0	0	
ATC-8D	11/9/2022 12:15	0.0	1.3	19.1	0.0	-0.18	
ATC-8S	11/9/2022 12:14	0.0	0.2	20.3	0.0	-2.28	
GP-11A	11/9/2022 10:38	0.0	1.0	20.1	0.0	-0.06	
GP-11B	11/9/2022 10:39	0.0	0.2	20.9	0.0	-1.35	
GP-11C	11/9/2022 10:41	0.0	0.2	20.9	0.0	-1.52	
GP-11D	11/9/2022 10:42	0.0	0.2	19.6	0.0	-0.2	
GP-12A	11/9/2022 11:06	0.0	1.2	20.2	0.0	-0.01	
GP-12B	11/9/2022 11:08	0.0	0.2	21.0	0.0	0.02	
GP-12C	11/9/2022 11:09	0.0	0.2	19.7	0.0	-0.09	
GP-12D	11/9/2022 11:10	0.0	0.2	21.0	0.0	-0.44	
GP-13A	11/9/2022 10:59	0.0	1.4	19.8	0.0	-0.14	
GP-13B	11/9/2022 11:00	0.0	0.2	21.0	0.0	-0.51	
GP-13C	11/9/2022 11:01	0.0	0.2	21.0	0.0	-0.03	
GP-13D	11/9/2022 11:03	0.0	0.2	21.0	0.0	-3.4	
GP-14A	11/9/2022 11:16	0.0	0.2	21.0	0.0	-1.22	
GP-14B	11/9/2022 11:18	0.0	0.2	21.1	0.0	-1.5	
GP-15A	11/9/2022 11:40	0.0	0.9	19.6	0.0	0.04	
GP-15C	11/9/2022 11:41	0.0	0.9	16.4	0.0	-0.19	
GP-15D	11/9/2022 11:42	0.0	0.2	20.5	0.0	-2.32	
GP-16A	11/9/2022 12:09	0.0	1.7	18.7	0.0	0.22	
GP-16B	11/9/2022 12:10	0.0	0.3	18.7	0.0	-3.1	
GP-16C	11/9/2022 12:11	0.0	0.2	20.3	0.0	-3.61	
GP-17A	11/9/2022 13:29	0.0	0.2	19.2	0.0	0.08	
GP-17B	11/9/2022 13:30	0.0	0.8	15.5	0.0	-0.13	
GP-17C	11/9/2022 13:32	0.0	0.2	19.3	0.0	-3.84	
GP-18A	11/9/2022 13:39	0.0	2.2	17.4	0.0	-0.04	
GP-18B	11/9/2022 13:41	0.0	0.5	14.4	0.0	0	
GP-18C	11/9/2022 13:42	0.0	0.2	19.1	0.0	-4.08	
GP-19A	11/9/2022 13:45	0.0	1.3	18.1	0.0	-0.07	
GP-19B	11/9/2022 13:47	0.0	0.8	15.4	0.0	-0.12	
GP-19C	11/9/2022 13:48	0.0	0.1	19.6	0.0	-0.31	
GP-20A	11/9/2022 13:53	0.0	0.5	19.4	0.0	-0.09	
GP-20B	11/9/2022 13:55	0.0	0.3	18.6	0.0	0.02	
GP-20C	11/9/2022 13:56	0.0	0.3	5.3	0.0	-0.12	
GP-21A	11/9/2022 14:06	0.0	0.2	20.0	0.0	-0.09	
GP-21B	11/9/2022 14:07	0.0	0.2	10.9	0.0	-0.08	
GP-21C	11/9/2022 14:08	0.0	0.5	14.7	0.0	-6.2	
GP-22A	11/9/2022 14:11	0.0	0.8	19.7	0.0	0.91	

CEDAR HILLS REGIONAL LANDFILL
Landfill Gas Compliance Probes
November 2022 Monitoring Data

Location ID	Date/Time	CH4 (% Vol)	CO2 (% Vol)	O2 (% Vol)	Lower Explosive Limit (% LEL)	Static Pressure (in INWC)	Comments
GP-22C	11/9/2022 14:13	0.0	0.5	5.7	0.0	-4	
GP-23A	11/9/2022 14:17	0.0	0.2	20.3	0.0	0.18	
GP-23B	11/9/2022 14:18	0.0	0.1	20.4	0.0	0.06	
GP-23C	11/9/2022 14:20	0.0	0.1	20.4	0.0	-0.17	
GP-24A	11/9/2022 14:23	0.0	4.0	16.5	0.0	0.11	
GP-24B	11/9/2022 14:24	0.0	0.3	20.2	0.0	-1.11	
GP-25	11/9/2022 14:27	0.0	2.2	17.9	0.0	-0.06	
GP-26	11/9/2022 14:30	0.0	0.5	19.6	0.0	-1.88	
GP-27	11/9/2022 14:33	0.0	7.6	11.6	0.0	0.03	
GP-29A	11/9/2022 14:40	0.0	1.2	19.5	0.0	-0.01	
GP-29B	11/9/2022 14:41	0.0	0.4	20.3	0.0	-0.22	
GP-30A	11/9/2022 8:24	0.0	0.4	20.7	0.0	-0.01	
GP-30B	11/9/2022 8:25	0.0	1.4	19.6	0.0	-1.1	
GP-31A	11/9/2022 8:30	0.0	6.7	14.6	0.0	-0.02	
GP-31B	11/9/2022 8:32	0.0	0.3	19.3	0.0	-1.11	
GP-31C	11/9/2022 8:33	0.0	1.6	18.7	0.0	-0.03	
GP-32A	11/9/2022 8:38	0.0	0.2	21.2	0.0	-0.04	
GP-32B	11/9/2022 8:39	0.0	0.2	21.2	0.0	0.09	
GP-32C	11/9/2022 8:41	0.0	0.4	21.0	0.0	0.06	Pump Fail
GP-33A	11/9/2022 8:47	0.0	2.4	19.2	0.0	-0.06	
GP-33B	11/9/2022 8:49	0.0	0.4	21.2	0.0	0.03	
GP-33C	11/9/2022 8:50	0.0	0.2	21.5	0.0	-1.79	
GP-34A	11/9/2022 8:55	0.0	9.0	11.4	0.0	-0.25	
GP-34B	11/9/2022 8:57	0.0	0.2	20.7	0.0	-0.02	
GP-34C	11/9/2022 8:58	0.0	0.2	20.8	0.0	-2.7	
GP-35A	11/9/2022 9:00	0.0	5.1	16.4	0.0	-0.02	
GP-35B	11/9/2022 9:02	0.0	0.2	20.8	0.0	-0.03	
GP-35C	11/9/2022 9:03	0.0	0.2	20.8	0.0	-0.01	
GP-36A	11/9/2022 9:08	0.0	0.4	20.7	0.0	-4.19	
GP-36B	11/9/2022 9:09	0.0	2.4	18.4	0.0	-0.03	
GP-36C	11/9/2022 9:11	0.0	0.4	14.0	0.0	-2.02	
GP-37A	11/9/2022 9:14	0.0	1.8	18.0	0.0	-0.03	
GP-37B	11/9/2022 9:15	0.0	0.5	18.3	0.0	0.25	Pump Fail
GP-37C	11/9/2022 9:16	0.0	0.7	3.6	0.0	-3.59	
GP-39	11/9/2022 9:23	0.0	0.9	18.5	0.0	-0.13	
GP-40	11/9/2022 9:26	0.0	0.2	20.6	0.0	-0.06	
GP-41A	11/9/2022 9:30	0.0	5.2	14.8	0.0	0	
GP-41B	11/9/2022 9:31	0.0	1.2	6.2	0.0	-0.04	
GP-41C	11/9/2022 9:32	0.0	0.2	20.6	0.0	-0.17	
GP-42A	11/9/2022 9:39	0.0	3.6	13.0	0.0	-0.05	
GP-42B	11/9/2022 9:41	0.0	0.3	20.4	0.0	-1.61	
GP-43A	11/9/2022 9:44	0.0	0.4	20.2	0.0	-0.44	Pump Fail
GP-43B	11/9/2022 9:45	0.0	0.2	20.6	0.0	-0.01	
GP-43C	11/9/2022 9:46	0.0	0.2	20.6	0.0	0.1	
GP-44A	11/9/2022 9:50	0.0	7.1	10.4	0.0	0.28	
GP-44B	11/9/2022 9:52	0.0	0.9	11.4	0.0	12.79	
GP-44C	11/9/2022 9:53	0.0	0.2	20.6	0.0	-0.06	
GP-45D	11/9/2022 10:36	0.0	0.2	20.8	0.0	-1.44	
GP-45I	11/9/2022 10:35	0.0	0.2	20.8	0.0	-0.19	
GP-45S	11/9/2022 10:33	0.0	0.2	20.6	0.0	-0.04	

CEDAR HILLS REGIONAL LANDFILL
Landfill Gas Compliance Probes
December 2022 Monitoring Data

Location ID	Date/Time	CH4 (% Vol)	CO2 (% Vol)	O2 (% Vol)	Lower Explosive Limit (% LEL)	Static Pressure (in INWC)	Comments
ATC-1D	12/17/2022 10:36	0.0	0.1	20.7	0.0	0	
ATC-1S	12/17/2022 10:35	0.0	0.2	20.5	0.0	0.03	
ATC-6D	12/30/2022 10:17	0.0	0.4	12.1	0.0	-0.01	
ATC-6S	12/30/2022 10:15	0.0	0.2	19.6	0.0	-0.91	
ATC-8D	12/30/2022 10:08	0.0	0.2	17.8	0.0	-0.02	
ATC-8S	12/30/2022 10:07	0.0	0.3	12.7	0.0	0.01	
GP-11A	12/17/2022 10:23	0.0	0.9	19.8	0	0.47	
GP-11B	12/17/2022 10:24	0.0	0.4	18.5	0	0.72	
GP-11C	12/17/2022 10:25	0.0	0.2	20.4	0	0.54	
GP-11D	12/17/2022 10:26	0.0	0.3	17.2	0	0.09	
GP-12A	12/17/2022 10:41	0.0	0.5	20.5	0	0.03	
GP-12B	12/17/2022 10:42	0.0	0.2	20.6	0	0.05	
GP-12C	12/17/2022 10:43	0.0	0.2	18.8	0	0.07	
GP-12D	12/17/2022 10:44	0.0	0.2	20.9	0	-0.04	
GP-13A	12/17/2022 10:47	0.0	0.2	21.0	0	0.04	
GP-13B	12/17/2022 10:47	0.0	0.5	19.7	0	-0.13	
GP-13C	12/17/2022 10:49	0.0	0.2	21.0	0	0.06	
GP-13D	12/17/2022 10:50	0.0	0.2	21.0	2	1.46	
GP-14A	12/17/2022 10:55	0.0	0.2	20.5	0	0.33	
GP-14B	12/17/2022 10:56	0.0	0.2	20.7	0	0.27	
GP-15A	12/30/2022 9:49	0.0	0.3	18.3	0	0.02	
GP-15C	12/30/2022 9:51	0.0	1.0	15.8	0	0.03	
GP-15D	12/30/2022 9:52	0.0	0.1	21.0	0	-0.73	
GP-16A	12/30/2022 10:10	0.0	0.2	20.6	0	-0.05	
GP-16B	12/30/2022 10:11	0.0	0.5	16.6	0	9.16	
GP-16C	12/30/2022 10:12	0.0	1.0	13.5	0	2.53	
GP-17A	12/17/2022 11:35	0.0	0.2	19.8	0	-0.92	
GP-17B	12/17/2022 11:36	0.0	1.0	14.5	0	0.03	
GP-17C	12/17/2022 11:37	0.0	0.2	20.1	0	1.45	
GP-18A	12/17/2022 11:39	0.0	0.3	19.9	0	-0.45	
GP-18B	12/17/2022 11:41	0.0	0.5	14.9	0	-0.25	
GP-18C	12/17/2022 11:41	0.0	0.2	18.8	0	1.27	
GP-19A	12/17/2022 11:44	0.0	0.2	20.0	0	0.04	
GP-19B	12/17/2022 11:45	0.0	0.9	15.2	0	-0.08	
GP-19C	12/17/2022 11:46	0.0	0.2	19.8	0	0.08	
GP-20A	12/17/2022 11:48	0.0	0.2	20.0	0	0.04	
GP-20B	12/17/2022 11:49	0.0	0.2	19.8	0	0.12	
GP-20C	12/17/2022 11:50	0.0	0.3	18.5	0	-0.23	
GP-21A	12/17/2022 12:37	0.0	0.2	18.5	0	-1.56	
GP-21B	12/17/2022 12:38	0.0	0.2	9.9	0	0	
GP-21C	12/17/2022 12:39	0.0	0.2	18.2	0	-2.83	
GP-22A	12/17/2022 12:42	0.0	0.7	17.9	0	-0.47	
GP-22C	12/17/2022 12:44	0.0	1.0	4.7	0	0.79	
GP-23A	12/17/2022 12:48	0.0	0.2	18.9	0	-0.44	

CEDAR HILLS REGIONAL LANDFILL
Landfill Gas Compliance Probes
December 2022 Monitoring Data

Location ID	Date/Time	CH4 (% Vol)	CO2 (% Vol)	O2 (% Vol)	Lower Explosive Limit (% LEL)	Static Pressure (in INWC)	Comments
GP-23B	12/17/2022 12:49	0.0	0.1	19.1	0	-1.54	
GP-23C	12/17/2022 12:50	0.0	0.1	19.2	0	0	
GP-24A	12/17/2022 12:53	0.0	2.2	17.0	0	0.25	
GP-24B	12/17/2022 12:54	0.0	1.8	17.2	0	1.56	
GP-25	12/17/2022 12:56	0.0	2.5	12.8	0	0.03	
GP-26	12/17/2022 13:01	0.0	0.8	17.3	0	0.18	
GP-27	12/17/2022 13:04	0.0	7.8	9.9	0	0.06	
GP-29A	12/17/2022 13:07	0.0	1.7	18.1	0	0.09	
GP-29B	12/17/2022 13:08	0.0	0.2	19.6	0	0.19	
GP-30A	12/17/2022 8:54	0.0	1.0	19.8	0	0.07	
GP-30B	12/17/2022 8:55	0.0	1.2	19.2	0	0.38	
GP-31A	12/17/2022 9:00	0.0	6.1	14.5	0	0.09	
GP-31B	12/17/2022 9:01	0.0	0.4	16.2	0	0.78	
GP-31C	12/17/2022 9:02	0.0	1.6	17.9	0	0.05	
GP-32A	12/17/2022 9:05	0.0	1.2	19.2	0	0.05	
GP-32B	12/17/2022 9:06	0.0	0.7	20.0	0	0.42	
GP-32C	12/17/2022 9:07	0.0	0.5	20.6	0	0.18	
GP-33A	12/17/2022 9:11	0.0	0.1	20.7	0	N/A	
GP-33B	12/17/2022 9:13	0.0	0.1	20.8	0	0.03	
GP-33C	12/17/2022 9:14	0.0	0.2	20.6	0	0.24	
GP-34A	12/17/2022 9:17	0.0	0.1	20.8	0	6.77	
GP-34B	12/17/2022 9:17	0.0	0.2	20.9	0	-0.04	
GP-34C	12/17/2022 9:18	0.0	0.1	19.9	0	1.09	
GP-35A	12/17/2022 9:21	0.0	2.1	18.9	0	0.02	
GP-35B	12/17/2022 9:23	0.0	0.5	9.2	0	0.13	
GP-35C	12/17/2022 9:24	0.0	0.2	20.9	0	-0.02	
GP-36A	12/17/2022 9:27	0.0	0.8	19.9	0	2.83	
GP-36B	12/17/2022 9:28	0.0	0.7	20.8	0	-0.32	
GP-36C	12/17/2022 9:29	0.0	0.4	11.8	0	0.82	
GP-37A	12/17/2022 9:35	0.0	0.1	21.0	0	0.04	
GP-37B	12/17/2022 9:36	0.0	0.1	21.0	0	-0.18	
GP-37C	12/17/2022 9:37	0.0	0.7	1.3	0	2.17	
GP-39	12/17/2022 9:42	0.0	0.5	18.9	0	0.17	
GP-40	12/17/2022 9:45	0.0	0.2	21.0	0	0.06	
GP-41A	12/17/2022 9:54	0.0	0.2	20.9	0	0.05	
GP-41B	12/17/2022 9:55	0.0	0.2	20.3	0	-0.07	
GP-41C	12/17/2022 9:56	0.0	0.2	20.8	0	-0.09	
GP-42A	12/17/2022 9:59	0.0	0.2	20.7	0	-0.55	
GP-42B	12/17/2022 10:00	0.0	0.6	19.3	0	0.97	
GP-43A	12/17/2022 10:03	0.0	0.2	20.6	0	-0.31	
GP-43B	12/17/2022 10:05	0.0	0.2	20.7	0	-0.41	
GP-43C	12/17/2022 10:06	0.0	0.2	20.4	0	-0.23	
GP-44A	12/17/2022 10:11	0.0	0.2	20.5	0	0.01	
GP-44B	12/17/2022 10:13	0.0	1.0	10.4	0	28.9	
GP-44C	12/17/2022 10:14	0.0	0.2	20.1	0	0.04	
GP-45D	12/17/2022 10:21	0.0	0.2	20.6	0	0.75	
GP-45I	12/17/2022 10:20	0.0	0.2	20.5	0	0.04	
GP-45S	12/17/2022 10:19	0.0	0.2	19.9	0	-0.01	

Interior Probes

CEDAR HILLS REGIONAL LANDFILL
Landfill Gas Interior Probes
October 2022 Monitoring Data

Location ID	Date/Time	CH4 (% Vol)	CO2 (% Vol)	O2 (% Vol)	Lower Explosive Limit (% LEL)	Static Pressure (in INWC)	Comments
ATC-3D	10/11/2022 14:12	0.0	0.7	19.1	0	-1.15	
ATC-3S	10/11/2022 14:10	0.0	10.9	7.9	0	0.06	
GP-1A	10/12/2022 22:48	0.0	2.1	19.6	0.0	0.12	
GP-1B	10/12/2022 22:49	0.0	0.1	21.0	0.0	0.11	
GP-2A	10/12/2022 23:09	0.0	6.8	13.4	0	0.07	
GP-2B	10/12/2022 23:11	0.0	0.2	21.0	0	0.06	
GP-3	10/12/2022 23:28	0.0	14.3	8.0	0	0.02	
GP-46I	10/12/2022 23:33	0.0	0.1	21.0	0	0.03	
GP-46S	10/12/2022 23:34	0.0	0.1	21.0	0	-1.87	
GP-46D	10/12/2022 23:36	0.0	0.1	21.0	0	-0.48	
GP-47D	10/9/2022 14:26	0	0.9	18	0	-0.01	
GP-47I	10/9/2022 14:25	18.2	11.2	6.5	>>>>	0.12	
GP-47S	10/9/2022 14:24	6.7	2.1	17.3	>>>>	0.55	
GP-47D	10/18/2022 0:00	0	0.1	19.9		-1.7	
GP-47I	10/18/2022 0:00	9.3	3.5	16.1	>>>>	-1.69	
GP-47S	10/18/2022 0:00	0	0.7	18.9		0.02	
GP-48S	10/12/2022 23:43	0.0	0.1	21.0	0	-0.08	
GP-48I	10/12/2022 23:45	0.0	0.2	21.0	0	0.20	
GP-48D	10/12/2022 23:47	0.0	0.1	21.0	0	-0.54	
GP-48S	10/18/2022 0:00	0.0	0.1	19.9		-0.02	
GP-48I	10/18/2022 0:00	0.0	0.2	19.8		-0.06	
GP-48D	10/18/2022 0:00	0.0	0.1	19.9		-1.74	
GP-4A	10/12/2022 23:17	0.0	6.4	15.1	0	-0.03	
GP-4B	10/12/2022 23:19	0.0	0.1	21.0	0	0.02	
GP-52	10/9/2022 16:41	0.0	3.9	13.9	0	0.19	
GP-52	10/18/2022 0:00	0.0	6.1	10.3		0	
GP-53	10/9/2022 16:43	0.0	0.2	20.3	0	0.55	
GP-53	10/18/2022 0:00	0.0	0.2	20.1		-0.21	
GP-54	10/9/2022 16:44	0.0	0.1	20.8	0	-0.02	
GP-54	10/18/2022 0:00	0.0	0.1	20.3		0.08	
GP-55	10/12/2022 22:34	0.0	0.2	20.7	0	0.44	
GP-56	10/12/2022 22:32	0.0	1.8	19.5	0	0.09	
GP-57	10/12/2022 22:28	60.7	24.9	0.1	>>>>	-2.86	
GP-58	10/12/2022 22:26	0.0	11.2	11.3	0	0.04	
GP-59	10/12/2022 22:23	0.0	0.2	20.5	0	0.06	
GP-5A	10/9/2022 12:53	0.0	0.1	21.0	0	-0.96	
GP-5BA	10/9/2022 12:55	0.0	3.2	18.7	0	0.05	

CEDAR HILLS REGIONAL LANDFILL
Landfill Gas Interior Probes
October 2022 Monitoring Data

Location ID	Date/Time	CH4 (% Vol)	CO2 (% Vol)	O2 (% Vol)	Lower Explosive Limit (% LEL)	Static Pressure (in INWC)	Comments
GP-5BB	10/9/2022 12:56	0.0	0.1	21.0	0	-0.96	
GP-5BC	10/9/2022 12:58	0.0	0.1	21.0	0	-1.02	
GP-5BD	10/9/2022 13:00	0.0	1.0	20.5	0	1.89	
GP-60	10/12/2022 22:20	0.0	0.4	20.3	0	0.09	
GP-61	10/12/2022 22:09	0.0	0.1	20.3	0	0.04	
GP-62	10/12/2022 22:07	0.0	3.9	17.1	0	0.06	
GP-63A	10/11/2022 14:35	0.0	3.6	18.1	0	0.04	
GP-63B	10/11/2022 14:36	0.0	0.2	20.2	0	-0.23	
GP-63C	10/11/2022 14:38	0.0	0.1	20.2	0	-0.3	
GP-64A	10/11/2022 15:05	0.0	5.5	10.0	0	0.02	
GP-64B	10/11/2022 15:07	0.0	0.8	18.4	0	0.07	
GP-64C	10/11/2022 15:08	0.0	0.1	19.9	0	-1.17	
GP-6A	10/12/2022 22:53	0.0	0.1	21.0	0	-0.80	
GP-6B	10/12/2022 22:54	0.0	0.1	21.0	0	-0.69	
GP-6C	10/12/2022 22:56	0.0	3.5	17.8	0	-0.68	
GP-6D	10/12/2022 22:58	0.0	0.1	21.0	0	-0.81	
GP-6E	10/12/2022 23:00	0.0	0.1	21.0	0	-0.67	
GP-6F	10/12/2022 23:01	0.0	0.1	21.0	0	-0.75	
GP-6G	10/12/2022 23:03	0.0	0.1	21.0	0	-0.75	
GP-6H	10/12/2022 23:05	0.0	0.1	21.0	0	-0.85	
GP-7	10/12/2022 22:44	0.0	0.1	20.9	0	0.09	
GP-8	10/12/2022 22:39	0.0	0.1	20.9	0	-0.53	
GP-9	10/12/2022 22:16	0.0	0.1	20.4	0	-0.53	
GP-B4-1	10/12/2022 23:23	0.4	1.8	17.2	8	-1.00	
GP-B4-2	10/12/2022 23:25	0.0	0.1	21.0	0	0.83	
Near Fuel Island	10/18/2022 0:00	0.0	0.3	20.0		0.10	Supply Line Monitoring Probe
Front Gate	10/18/2022 0:00	0.0	6.6	13.6		0.04	Supply Line Monitoring Probe

CEDAR HILLS REGIONAL LANDFILL
Landfill Gas Interior Probes
Novemeber 2022 Monitoring Data

Location ID	Date/Time	CH4 (% Vol)	CO2 (% Vol)	O2 (% Vol)	Lower Explosive Limit (% LEL)	Static Pressure (in INWC)	Comments
ATC-3D	11/9/2022 11:49	0.0	2.3	15.1	0	-3.98	
ATC-3S	11/9/2022 11:48	0.0	1.6	19.0	0	-2.28	H2O
GP-1A	11/10/2022 23:58	0.0	0.1	21.0	0.0	-0.06	
GP-1B	11/11/2022 0:00	0.0	0.1	21.0	0.0	-3.02	
GP-2A	11/11/2022 0:33	0.0	8.5	8.6	0.0	-0.04	
GP-2B	11/11/2022 0:35	0.0	0.2	21.0	0.0	-0.03	
GP-3	11/11/2022 0:48	0.0	12.0	3.4	0.0	-0.13	
GP-46D	11/11/2022 0:55	0.0	0.1	21.0	0.0	-0.99	
GP-46I	11/11/2022 0:53	0.0	0.1	21.0	0.0	-3.37	
GP-46S	11/11/2022 0:52	0.0	0.1	21.0	0.0	-0.03	
GP-47D	11/9/2022 10:24	0.0	0.3	20.2	0	-0.08	
GP-47I	11/9/2022 10:23	28.3	17.3	0.1	>>>>	-3.16	
GP-47S	11/9/2022 10:22	0.0	0.1	20.4	0	-3.15	
GP-48D	11/11/2022 1:02	0.0	0.1	21.0	0.0	-2.91	
GP-48I	11/11/2022 1:01	0.0	0.2	21.0	0.0	-0.15	
GP-48S	11/11/2022 1:00	0.0	0.1	21.0	0.0	-0.06	
GP-4A	11/11/2022 0:39	0.0	0.1	21.0	0.0	-0.11	
GP-4B	11/11/2022 0:41	0.0	0.2	21.0	0.0	-0.04	
GP-52	11/9/2022 10:12	0.0	0.3	20.3	0	0.37	
GP-53	11/9/2022 10:14	0.0	0.7	17.9	2	-0.92	
GP-54	11/9/2022 10:15	0.0	0.1	20.4	0	-0.24	
GP-55	11/10/2022 23:44	0.0	0.4	21.0	0.0	-0.01	
GP-56	11/10/2022 23:46	0.0	2.6	19.2	0.0	2.98	
GP-57	11/10/2022 23:35	62.2	25.5	0.2	>>>>	-3.84	
GP-58	11/10/2022 23:38	0.0	11.0	7.0	0.0	0.04	

CEDAR HILLS REGIONAL LANDFILL
Landfill Gas Interior Probes
Novemeber 2022 Monitoring Data

Location ID	Date/Time	CH4 (% Vol)	CO2 (% Vol)	O2 (% Vol)	Lower Explosive Limit (% LEL)	Static Pressure (in INWC)	Comments
GP-59	11/10/2022 23:23	0.0	0.1	21.0	0.0	-0.26	
GP-5A	11/9/2022 11:26	0.0	0.2	21.1	0	-4.08	
GP-5BA	11/9/2022 11:29	0.0	0.4	20.3	0	0.07	
GP-5BB	11/9/2022 11:31	0.0	0.2	20.7	0	-4.09	
GP-5BC	11/9/2022 11:32	0.0	0.2	20.7	0	-4.08	
GP-5BD	11/9/2022 11:34	0.0	0.2	20.7	0	-4.04	
GP-60	11/10/2022 23:25	0.0	0.2	21.0	0.0	-0.01	
GP-61	11/10/2022 23:09	0.0	0.1	21.0	0.0	-1.44	
GP-62	11/10/2022 23:12	0.0	3.8	17.9	0.0	0.04	
GP-63A	11/9/2022 12:20	0.0	3.3	16.2	0.0	0.01	
GP-63B	11/9/2022 12:21	0.0	0.2	20.3	0.0	-1.21	
GP-63C	11/9/2022 12:24	0.0	0.2	20.3	0.0	-3.39	
GP-64A	11/9/2022 11:54	0.0	2.1	17.1	0.0	0.29	
GP-64B	11/9/2022 11:56	0.0	1.8	17.3	0.0	-0.18	
GP-64C	11/9/2022 11:58	0	0.2	20.2	0	-3.62	
GP-6A	11/11/2022 0:08	0.0	0.1	21.0	0.0	-4.41	
GP-6B	11/11/2022 0:09	0.0	0.1	21.0	0.0	-3.14	
GP-6C	11/11/2022 0:11	0.0	0.1	21.0	0.0	-3.14	
GP-6D	11/11/2022 0:12	0.0	0.1	21.0	0.0	-3.35	
GP-6E	11/11/2022 0:14	0.0	0.1	21.0	0.0	-3.23	
GP-6F	11/11/2022 0:15	0.0	0.1	21.0	0.0	-3.12	
GP-6G	11/11/2022 0:17	0.0	0.1	21.0	0.0	-3.06	
GP-6H	11/11/2022 0:18	0.0	0.1	21.0	0.0	-3.28	
GP-7	11/10/2022 23:54	0.0	0.1	21	0	-2.47	
GP-8	11/10/2022 23:51	0.0	10.9	6.6	0	-2.4	
GP-9	11/10/2022 23:17	0.0	0.2	21	0	-2.42	
GP-B4-1	11/11/2022 0:44	0.0	0.1	21	0	-2.57	
GP-B4-2	11/11/2022 0:46	0.0	0.1	21	0	-1.89	

CEDAR HILLS REGIONAL LANDFILL
Landfill Gas Interior Probes
December 2022 Monitoring Data

Location ID	Date/Time	CH4 (% Vol)	CO2 (% Vol)	O2 (% Vol)	Lower Explosive Limit (% LEL)	Static Pressure (in INWC)	Comments
ATC-3D	12/30/2022 9:45	0	3.8	11.8	0	4.53	
ATC-3S	12/30/2022 9:44	0	0.7	20.9	0	1.57	
GP-1A	12/21/2022 0:05	0.0	0.1	21.0	0	0.02	
GP-1B	12/21/2022 0:07	0.0	1.7	16.0	0	-2.56	
GP-2A	12/21/2022 0:32	0.0	5.7	8.5	0	-0.03	
GP-2B	12/21/2022 0:33	0.0	0.2	21.0	0	-0.05	
GP-3	12/21/2022 0:54	0.0	5.2	11.6	0	-0.15	
GP-46S	12/21/2022 1:00	0.0	0.2	18.4	0	-0.15	
GP-46I	12/21/2022 1:02	0.0	0.1	21.0	0	-3.86	
GP-46D	12/21/2022 1:04	0.0	0.1	21.0	0	-2	
GP-47D	12/17/2022 11:28	0.1	1.5	15.5	2	-0.08	
GP-47I	12/17/2022 11:27	60.1	22.6	0.1	>>>>	2.11	
GP-47S	12/17/2022 11:26	20.9	12.6	0.2	>>>>	2.52	
GP-48S	12/21/2022 1:14	0.0	0.6	19.6	0	-0.51	
GP-48I	12/21/2022 1:16	0.0	0.3	21.0	0	-0.21	
GP-48D	12/21/2022 1:17	0.0	0.1	21.0	0	-1.86	
GP-4A	12/21/2022 0:41	0.0	0.1	21.0	0	-0.11	
GP-4B	12/21/2022 0:43	0.0	0.1	21.0	0	-0.09	
GP-52	12/17/2022 11:18	0	0.2	19.9	0	-7.42	
GP-53	12/17/2022 11:20	0	0.8	18.2	0	1.34	
GP-54	12/17/2022 11:21	0	0.1	20.1	0	0.02	
GP-55	12/20/2022 23:45	0.0	0.4	21.0	0	-0.09	
GP-56	12/20/2022 23:47	0.0	1.2	18.7	0	-0.08	
GP-57	12/20/2022 23:39	41.4	18.4	6.2	>>>>	-2.54	
GP-58	12/20/2022 23:36	0.0	14.4	2.8	0	24.59	
GP-59	12/20/2022 23:32	0.0	0.3	21.0	0	-0.27	
GP-5A	12/17/2022 11:06	0	0.2	20.7	0	0.16	
GP-5BA	12/17/2022 11:07	0	0.6	20.3	0	-0.01	
GP-5BB	12/17/2022 11:08	0	0.2	20.6	0	0.19	

CEDAR HILLS REGIONAL LANDFILL
Landfill Gas Interior Probes
December 2022 Monitoring Data

Location ID	Date/Time	CH4 (% Vol)	CO2 (% Vol)	O2 (% Vol)	Lower Explosive Limit (% LEL)	Static Pressure (in INWC)	Comments
GP-5BC	12/17/2022 11:09	0	0.2	20.6	0	0.19	
GP-5BD	12/17/2022 11:10	0	1.3	10.1	0	0.85	
GP-60	12/20/2022 23:29	0.0	0.1	21.0	0	0	
GP-61	12/20/2022 23:17	0.0	0.1	20.6	0	-0.7	
GP-62	12/20/2022 23:14	0.0	1.5	19.6	0	-0.03	
GP-63A	12/30/2022 9:58	0	0.3	21	0	0.1	
GP-63B	12/30/2022 9:59	0	0.1	21	0	0.04	
GP-63C	12/30/2022 10:01	0	0.3	16.5	0	2.1	
GP-64A	12/30/2022 10:21	0	0.2	19.4	0	0.01	
GP-64B	12/30/2022 10:22	0	2.4	17	0	-0.01	
GP-64C	12/30/2022 10:35	1.2	1.2	2.6	24	2.26	
GP-6A	12/21/2022 0:13	0.0	0.1	21.0	0	-1.95	
GP-6B	12/21/2022 0:15	0.0	0.1	21.0	0	-1.86	
GP-6C	12/21/2022 0:17	0.0	0.2	21.0	0	-1.85	
GP-6D	12/21/2022 0:19	0.0	0.1	21.0	0	-1.96	
GP-6E	12/21/2022 0:21	0.0	0.1	21.0	0	-1.78	
GP-6F	12/21/2022 0:22	0.0	0.1	21.0	0	-1.92	
GP-6G	12/21/2022 0:24	0.0	0.1	21.0	0	-1.65	
GP-6H	12/21/2022 0:25	0.0	0.1	21.0	0	-2	
GP-7	12/20/2022 23:58	0.0	0.1	21.0	0	-1.93	
GP-8	12/20/2022 23:52	0.0	0.4	21.0	0	-1.86	
GP-9	12/20/2022 23:24	0.0	0.2	20.7	0	-1.66	
GP-B4-1	12/21/2022 0:47	0.0	0.5	21.0	0	-2.09	
GP-B4-2	12/21/2022 0:48	0.0	0.1	21.0	0	-1.99	

Migration Probes

CEDAR HILLS REGIONAL LANDFILL
West Perimeter Landfill Gas Migration Control Probes
4th Quarter 2022 Monitoring Data

Probe ID	Date	Time	Barometric				Static	Comments
			Pressure in Hg	CH4 %vol	CO2 %vol	O2 %vol	Pressure in INWC	
MGPW 1700	10/5/2022	9:36AM	30.02	0	0.3	8.5	0.01	
MGPW 1700	10/23/2022	11:35am	30.01	0	0.2	20.5	-0.38	
MGPW 1700	11/12/2022	9:15am	30.07	0	0.2	20.5	-0.11	
MGPW 1700	11/19/2022	10:17am	30.15	0	0.2	20.6	-0.38	
MGPW 1700	12/4/2022	2:50pm	29.86	0	0.1	21	-0.37	
MGPW 1700	12/19/2022	12:06pm	30.11	0	0.2	21	-0.28	
MGPW 1708	10/5/2022	9:26AM	30.05	0	0.2	17	-1.48	
MGPW 1708	10/23/2022	11:22am	30.01	0	0.5	19.8	-2.67	
MGPW 1708	11/12/2022	9:28am	30.07	0	0.4	20.6	-1.56	
MGPW 1708	11/19/2022	10:26am	30.15	0	0.5	20	-0.11	
MGPW 1708	12/4/2022	2:36pm	29.86	0	0.2	21	-0.62	
MGPW 1708	12/19/2022	11:52am	30.11	0	0.3	21	-2.29	
MGPW 1710S	10/5/2022	9:19AM	30.05	0	0.2	19.5	-0.77	
MGPW 1710S	10/23/2022	11:15am	30.01	0	0.2	20.5	-2.49	
MGPW 1710S	11/12/2022	9:33am	30.07	0	0.2	21	-1.55	
MGPW 1710S	11/19/2022	10:32am	30.15	0	0.3	20.9	-0.22	
MGPW 1710S	12/4/2022	2:27pm	29.86	0	0.2	21	-0.60	
MGPW 1710S	12/19/2022	11:43am	30.11	0	0.4	20.7	-2.08	
MGPW 1710D	10/5/2022	9:21AM	30.05	0	0.1	20.2	-1.4	
MGPW 1710D	10/23/2022	11:16am	30.01	0	0.2	20.6	-2.71	
MGPW 1710D	11/12/2022	9:32am	30.07	0	0.3	20.8	-1.61	
MGPW 1710D	11/19/2022	10:30am	30.15	0	0.3	20.6	-0.17	
MGPW 1710D	12/4/2022	2:27pm	29.86	0	0.1	21	-0.6	
MGPW 1710D	12/19/2022	11:45am	30.11	0	0.2	21	-2.29	
MGPW 1714	10/5/2022	9:14AM	30.05	0	0.3	9.2	-0.135	
MGPW 1714	10/23/2022	11:07am	30.01	0	0.2	20.6	-2.62	
MGPW 1714	11/12/2022	9:38am	30.07	0	0.4	20.7	-1.85	
MGPW 1714	11/19/2022	10:36am	30.15	0	0.3	20.6	-0.35	
MGPW 1714	12/4/2022	2:14pm	29.86	0	0.2	21	-0.76	
MGPW 1714	12/19/2022	11:35am	30.11	0	0.3	20.8	-2.11	

On-Site Building Monitoring

**FOURTH QUARTER
BUILDING MONITORING**

		INSTRUMENT: Place check by instrument used : Foxboro TVA 2020 SEM 5000			WEATHER: PARTLY CLOUDY		DATE: 12/22/2022 TECH: DNS	
ENVIS ID	BLDG #	DESCRIPTION	CH ₄ (ppm)	REMARKS	BAROMETRIC PRESSURE (in. Hg)	TIME		
GOC- 12/22/22	1	FRONT OFFICE	3.8		30.3	0505		
GCR- 12/22/22	2	CONF ROOM	3.8			0506		
GAO- 12/22/22	3	PAYROLL OFFICE	3.8			0507		
GEO- 12/22/22	4	ENGR. OFFICE	3.8			0509		
GLRC- 12/22/22	5	LUNCHROOM	3.8			0510		
GSPC 12/22/22		SPOC	3.8			0447		
GELO- 12/22/22 A	6A	DRY STORAGE	3.8			0450		
GELO- 12/22/22 B	6B	ELECTRICIAN OFFICE	3.8			0451		
GAP- 12/22/22		ACCOUNT PAYABLE	3.8			0452		
GSO- 12/22/22 A	7A	SHOP OFFICE	3.8			0453		
GPR- 12/22/22 B	7B	PARTS ROOM	3.8			0454		
GMS- 12/22/22 C	7C	SHOP PIT AREA/BAY	3.8			0454		
GTB- 12/22/22 D	7D	SHOP TIRE BAY	3.8			0455		
GEW- 12/22/22 E	7E	EAST WELD SHOP	3.8			0456		
GWV- 12/22/22 F	7F	WEST WELD SHOP	3.8			0457		
GCS- 12/22/22	8	CARPENTER'S	3.8			0459		
GSS- 12/22/22	9	WASTEWATER	3.8			0501		
GSS- 12/22/22 B	9B	CARPENTER/STORAGE	NA	BLDG REMOVED		N/A		
GSH- 12/22/22	10	SCALEHOUSE	NA	BLACK ICE HAZARD		N/A		
GB13- 12/22/22	13	WW COMPRESSOR	3.8			0445		
GB16- 12/22/22	16	GENERATOR	3.8			0513		
GB19- 12/22/22	19	LEPS (P.S.# 5)	2.9			0516		
GB19- 12/22/22 B	19B	LEPS/H ₂ O ₂ ROOM	NA	BLDG REMOVED		N/A		
GB20- 12/22/22	20	LEPS ELEC PANALS	3.8			0515		
GB21- 12/22/22	21	STORAGE(OLD PS 1)	NA	OFF LIMITS		N/A		
GB22- 12/22/22	22	STORAGE/N FLARE	3.8			0539		
GB23- 12/22/22	23	LFGAS	3.8			0540		
GB24- 12/22/22	24	NE GENERATOR BLDG	3.8		0537			
GBWW- 12/22/22	30	WOMEN BRK RM	3.8		0448			
GPWT- 12/22/22	PW	PRESSURE WASH RM	NA	BLACK ICE HAZARD	N/A			
GBRR- 12/22/22	RR	TRUCKWASH RR W	NA	BLACK ICE HAZARD	N/A			
GBSS- 12/22/22	SS	TRUCKWASH RR E	NA	BLACK ICE HAZARD	N/A			
GBZZ- 12/22/22	29	MANAGERS TRAILER	NA	BLACK ICE HAZARD	N/A			
GBPT- 12/22/22		CCG FASTER	NA	BLACK ICE HAZARD	N/A			
GCLS- 12/22/22		CHLORINE SHED	NA	BLACK ICE HAZARD	N/A			

Passage Point Monitoring



2022 Analysis of Odor Complaints

King County’s Solid Waste Division (SWD) occasionally receives complaints regarding odor emitted from its facilities, and we take these complaints seriously.

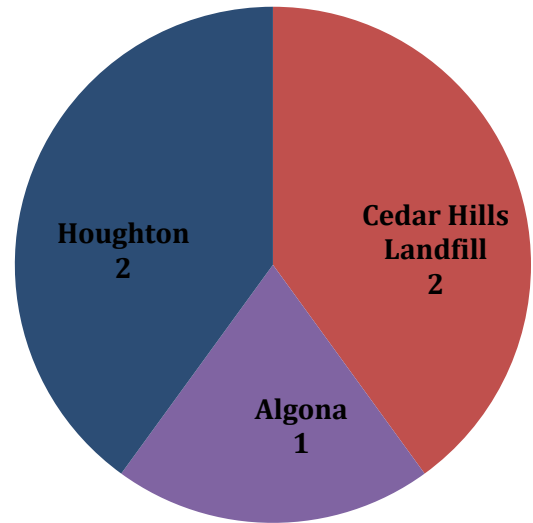
In 2022, SWD received five odor complaints through our customer service line. Two complaints were attributed to operations at the Cedar Hills Regional Landfill, a decrease from 12 complaints in 2021. Three complaints were related to other SWD facilities (Algona and Houghton transfer stations).

Prevention is our most effective strategy. In the next few years, both the Houghton and Algona transfer stations will be replaced with modern recycling and transfer stations designed to provide significantly better odor control. At the Cedar Hills landfill, active areas are covered at the end of each working day to control odors and wind-blown litter and to reduce the potential for wildlife to get into and carry away garbage. SWD is continually researching means by which landfill odor can be reduced. Since February 2022, SWD has deployed new equipment at the active face where refuse is being placed. Manufactured by Byers Scientific, the technology uses a vapor system that neutralizes odors. Based on the downturn in odor complaints outlined in this report, the system appears to be highly effective.

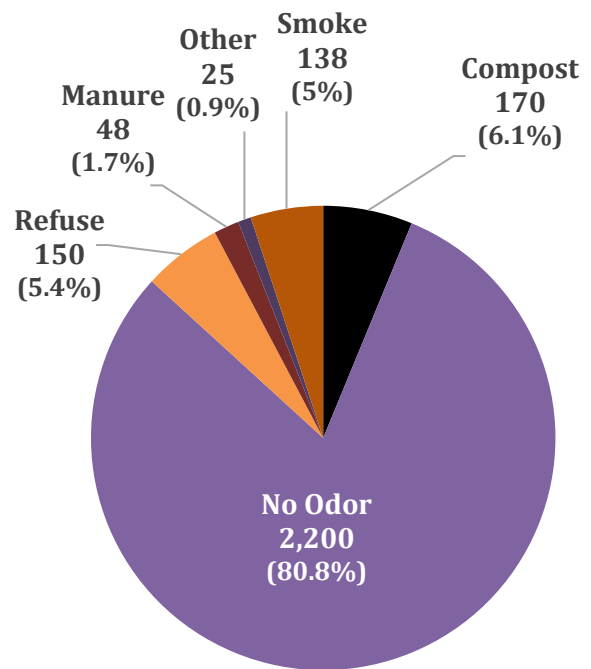
Monitoring and investigation are ongoing. On weekdays, trained staff conduct odor checks five times per day across the landfill and once through surrounding neighborhoods. On weekends, odor checks are conducted across the landfill three times a day. Staff also monitor areas associated with previous odor complaints.

In 2022, SWD conducted over 2,500 neighborhood odor checks. In 2,200 instances (80.8 percent), no odors were detected. Odors were classified into five categories: *refuse*, *compost*, *smoke*, *manure*, and *other*. Examples of “other” odors include sewage, odor from the contaminated stormwater pond, and chlorine. Where odors were detected, refuse accounted for 150 of the 531 detections--about 28 percent.

2 of the 5 odor complaints called in to SWD were attributed to the Cedar Hills landfill



Refuse odor was detected in about 5% of neighborhood odor checks



Solid Waste Division

Anyone who notices odors or any other issue they feel is related to the landfill operations can call the Solid Waste Division at 206-477-4466 to get an immediate response. *People should always call 911 first if they believe there is a potential emergency or a risk to safety, health, or property.*

The Puget Sound Clean Air Agency (PSCAA) has jurisdiction over King, Kitsap, Pierce, and Snohomish counties, where they seek to protect public health, improve neighborhood air quality, and reduce our region’s contribution to climate change.

PSCAA maintains records of odor complaints from across its jurisdiction but does not generally provide field investigations for complaints received. In 2022, PSCAA received 90 odor complaints for the Maple Valley area of which 32 (35 percent) cited Cedar Grove Compost, 46 (51 percent) specified the landfill, and 12 (14 percent) were uncertain as to whether the source was the landfill or Cedar Grove. The *percentage* of complaints attributable to the landfill is significantly higher than the 16 percent reported in 2021; however, the overall *number* of complaints is down dramatically from 2021—from 86 in 2021 to 46 in 2022.

51 percent of the odor complaints submitted to PSCAA in 2022 for the Maple Valley area were attributed to the Cedar Hills landfill, while landfill-related complaints were down 46.5% from 2021

