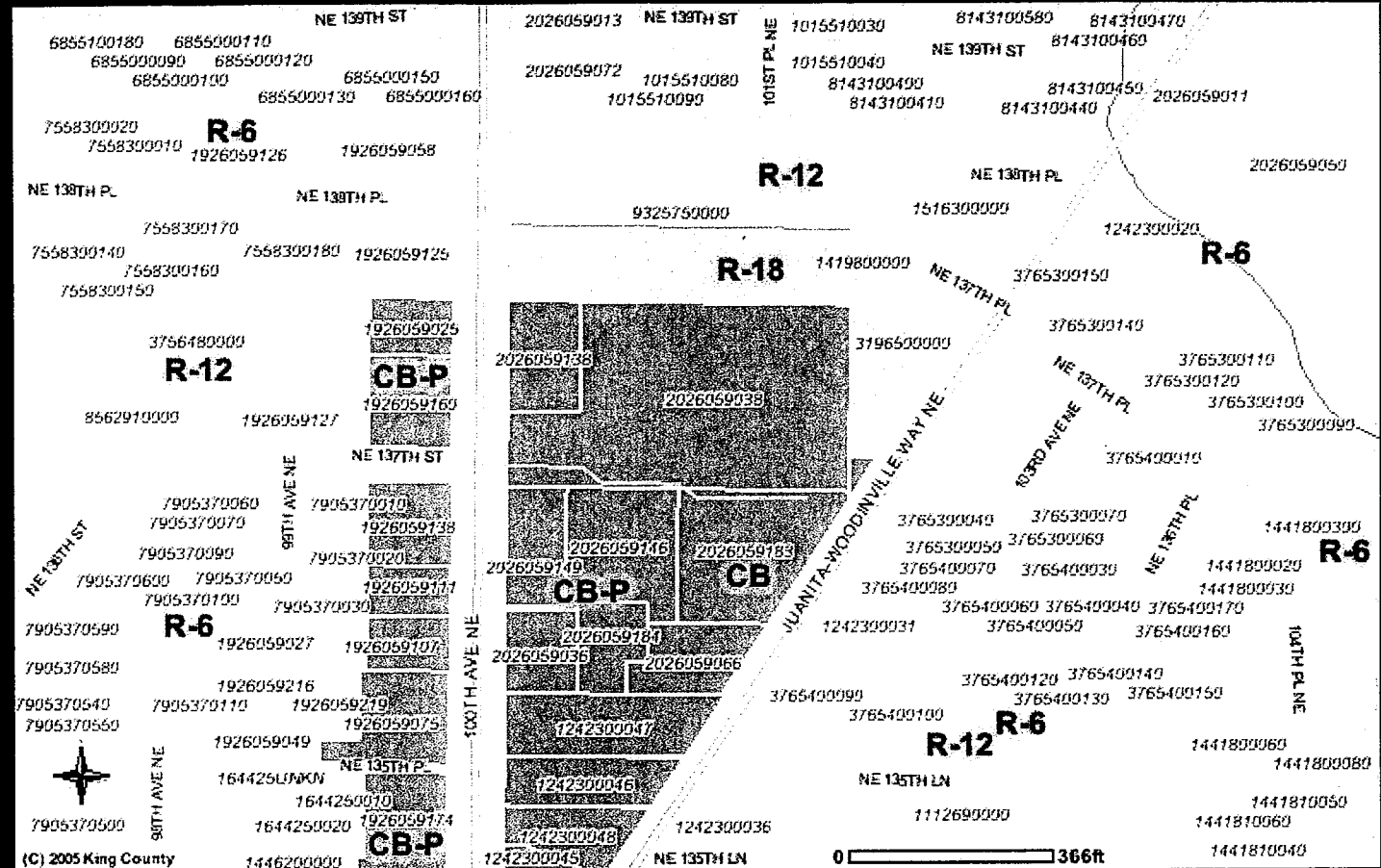


Legend

- | | | | | | |
|--|--|--|---|---------------------------------|-----------------------------------|
| | Selected Parcels | | Parks | | NB - Neighborhood Business |
| | County Boundary | | Unincorporated KC Zoning | | CB - Community Business |
| | Mountain Peaks | | A-10 - Agricultural, one DU per 10 acres | | RB - Regional Business |
| | Highways | | A-35 - Agricultural, one DU per 35 acres | | O - Office |
| | Forest Production District Boundary | | F - Forest | | I - Industrial |
| | Agricultural Production District Boundary | | M - Mineral | | Other |
| | Urban Growth Area Line | | RA-25 - Rural Area, one DU per 5 acres | 2005 Color Aerial Photos | |
| | Incorporated Area | | RA-5 - Rural Area, one DU per 5 acres | | |
| | Streets | | RA-10 - Rural Area, one DU per 10 acres | | |
| | Highway | | UR - Urban Reserve, one DU per 5 acres | | |
| | Arterials | | R-1 - Residential, one DU per acre | | |
| | Local | | R-4 - Residential, 4 DU per acre | | |
| | Lakes and Large Rivers | | R-6 - Residential, 6 DU per acre | | |
| | Streams | | R-8 - Residential, 8 DU per acre | | |
| | Tribal Lands | | R-12 - Residential, 12 DU per acre | | |
| | Parcels | | R-18 - Residential, 18 DU per acre | | |
| | | | R-24 - Residential, 24 DU per acre | | |
| | | | R-48 - Residential, 48 DU per acre | | |
| | | | (cont) | | |

The information included on this map has been compiled by King County staff from a variety of sources and is subject to change without notice. King County

45



Legend

- County Boundary
- Mountain Peaks
- Highways
- Forest Production District Boundary
- Agricultural Production District Boundary
- Urban Growth Area Line
- Incorporated Area
- Streets**
- Highway
- Arterials
- Local
- Lakes and Large Rivers
- Streams
- Tribal Lands
- Parcels**
- Parks
- Unincorporated KC Zoning**
- A-10 - Agricultural, one DU per 10 acres
- A-35 - Agricultural, one DU per 35 acres
- F - Forest
- M - Mineral
- RA-2.5 - Rural Area, one DU per 5 acres
- RA-5 - Rural Area, one DU per 5 acres
- RA-10 - Rural Area, one DU per 10 acres
- UR - Urban Reserve, one DU per 5 acres
- R-1 - Residential, one DU per acre
- R-4 - Residential, 4 DU per acre
- R-6 - Residential, 6 DU per acre
- R-8 - Residential, 8 DU per acre
- R-12 - Residential, 12 DU per acre
- R-18 - Residential, 18 DU per acre
- R-24 - Residential, 24 DU per acre
- (cont)
- R-46 - Residential, 48 DU per acre
- NB - Neighborhood Business
- CB - Community Business
- RB - Regional Business
- O - Office
- I - Industrial
- Other

46