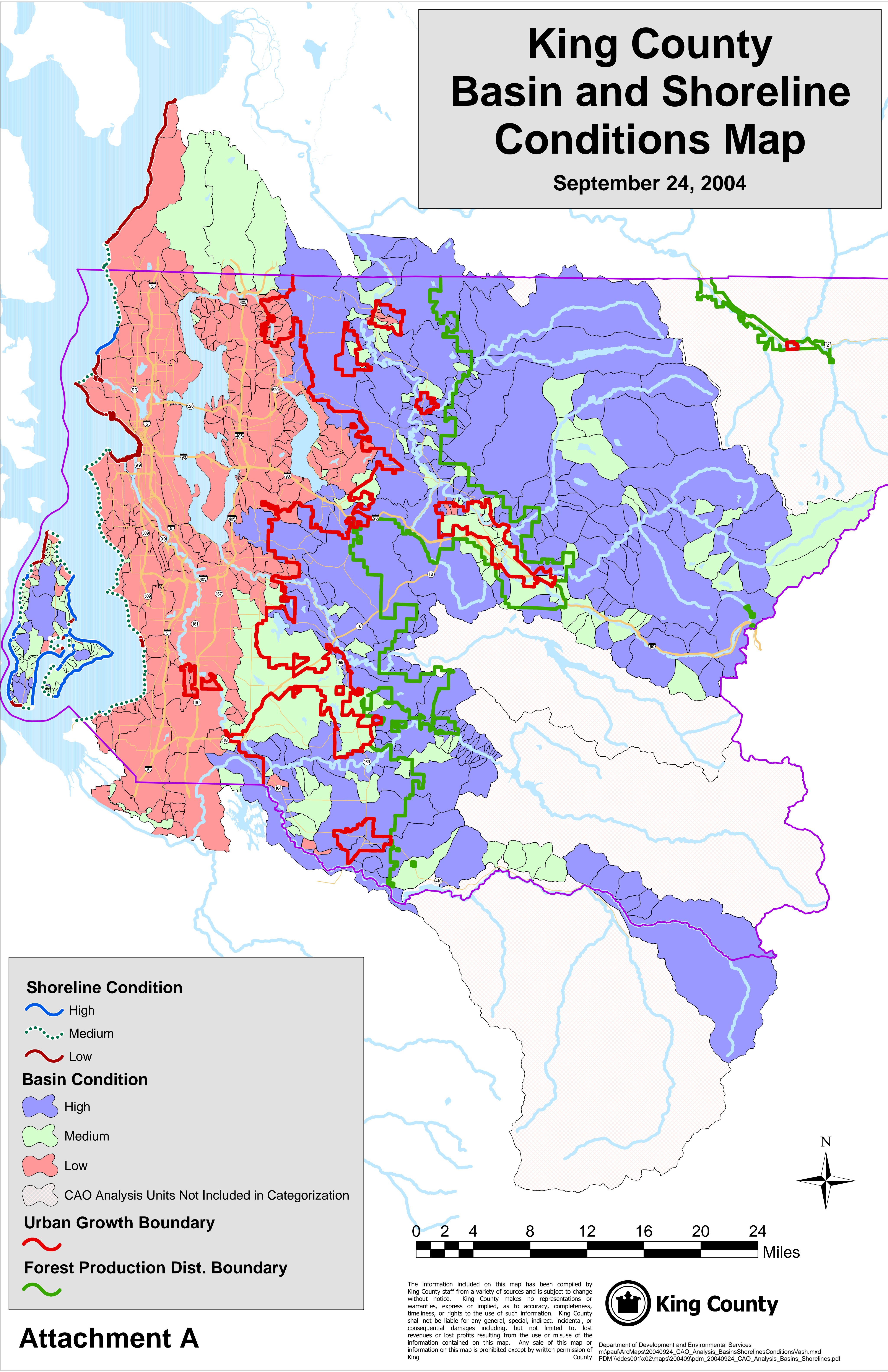


King County Basin and Shoreline Conditions Map

September 24, 2004



Shoreline Condition

- High (Blue wavy line)
- Medium (Green dotted line)
- Low (Red wavy line)

Basin Condition

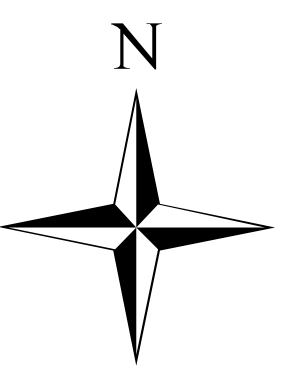
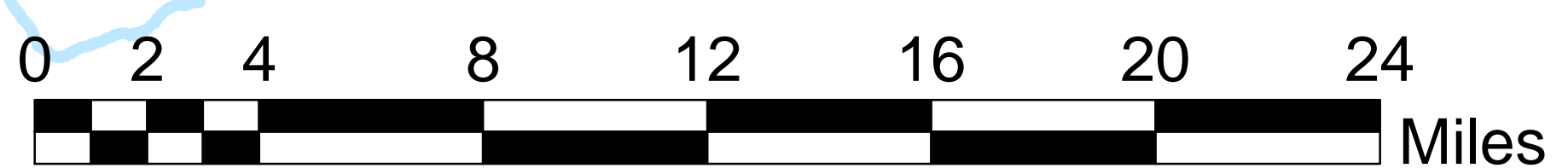
- High (Blue shaded area)
- Medium (Light Green shaded area)
- Low (Red shaded area)
- CAO Analysis Units Not Included in Categorization (White shaded area)

Urban Growth Boundary

- Red wavy line

Forest Production Dist. Boundary

- Green wavy line



Attachment A

The information included on this map has been compiled by King County staff from a variety of sources and is subject to change without notice. King County makes no representations or warranties, express or implied, as to accuracy, completeness, timeliness, or rights to the use of such information. King County shall not be liable for any general, special, indirect, incidental, or consequential damages including, but not limited to, lost revenues or lost profits resulting from the use or misuse of the information contained on this map. Any sale of this map or information on this map is prohibited except by written permission of King County.



Department of Development and Environmental Services
 m:\paul\ArcMaps\20040924_CAO_Analysis_BasinsShorelinesConditionsVash.mxd
 PDM \ddes001\02\maps\200409\pdm_20040924_CAO_Analysis_Basins_Shorelines.pdf