

METRO CONNECTS

King County Metro's
long-range vision

**More
Choices**

**One
System**

**More
Service**



Regional Transit Committee
April 27, 2016

Why now?

By 2040 our region will increase by:


850k
jobs


1m
people

We will need a Transit system that:

- Accommodates growth and demand
- Promotes equity and social justice
- Connects people to Link
- Reduces emissions
- Adopts emerging technologies

What will it take
to respond
to these needs?

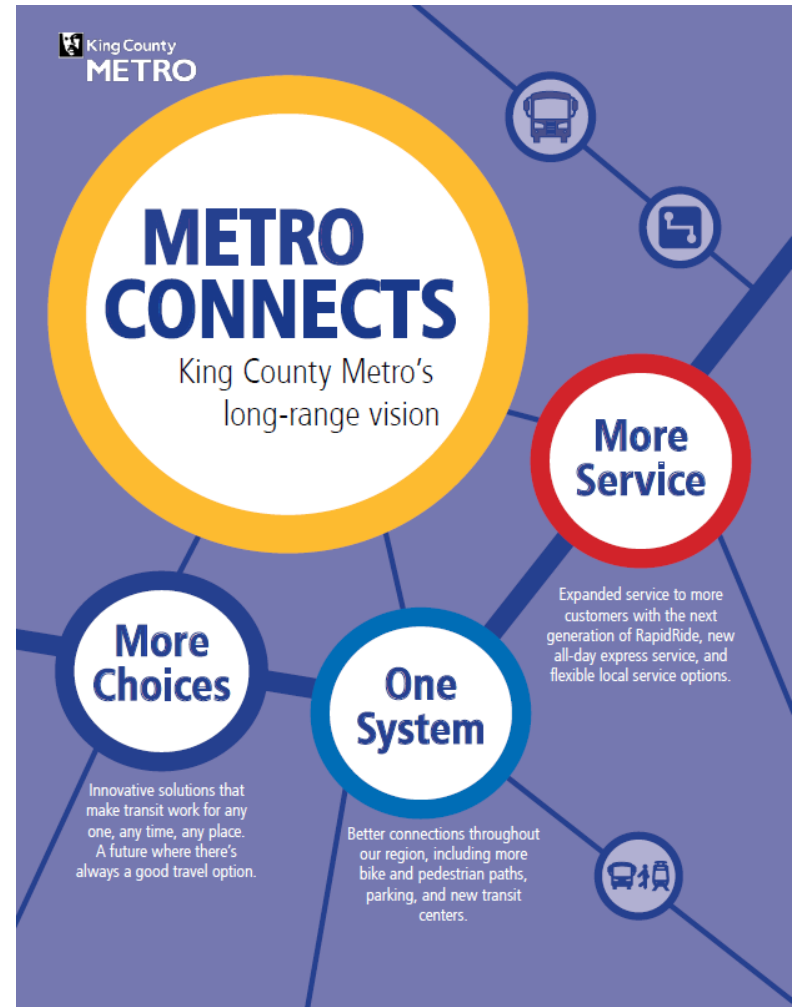
70%

GROWTH

in Metro service,
from 3.5 million
service hours to
6 million hours
by 2040.

Overview

- More Service
- More choices to meet many needs
- Easy, Safe, and Comfortable Travel
- Nuts and Bolts
- What we need to succeed



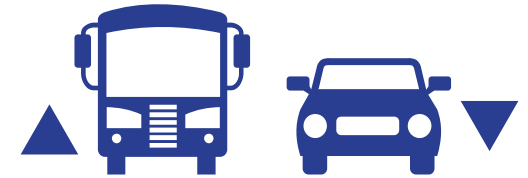
Benefits Across King County



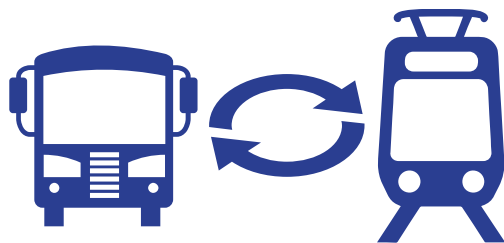
DOUBLE transit ridership



TRIPLE the percentage of people close to frequent service



Commuters who take transit grows from **14%** to **24%**



Metro buses arrive at Link stations every

1.5 MINUTES



In **LOW-INCOME** or **MINORITY** areas, **85%** of residents will be close to frequent transit service—and the **OPPORTUNITIES** it brings.

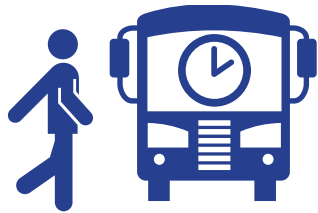


EMISSIONS REDUCED. 300,000 fewer cars are on the road every weekday.

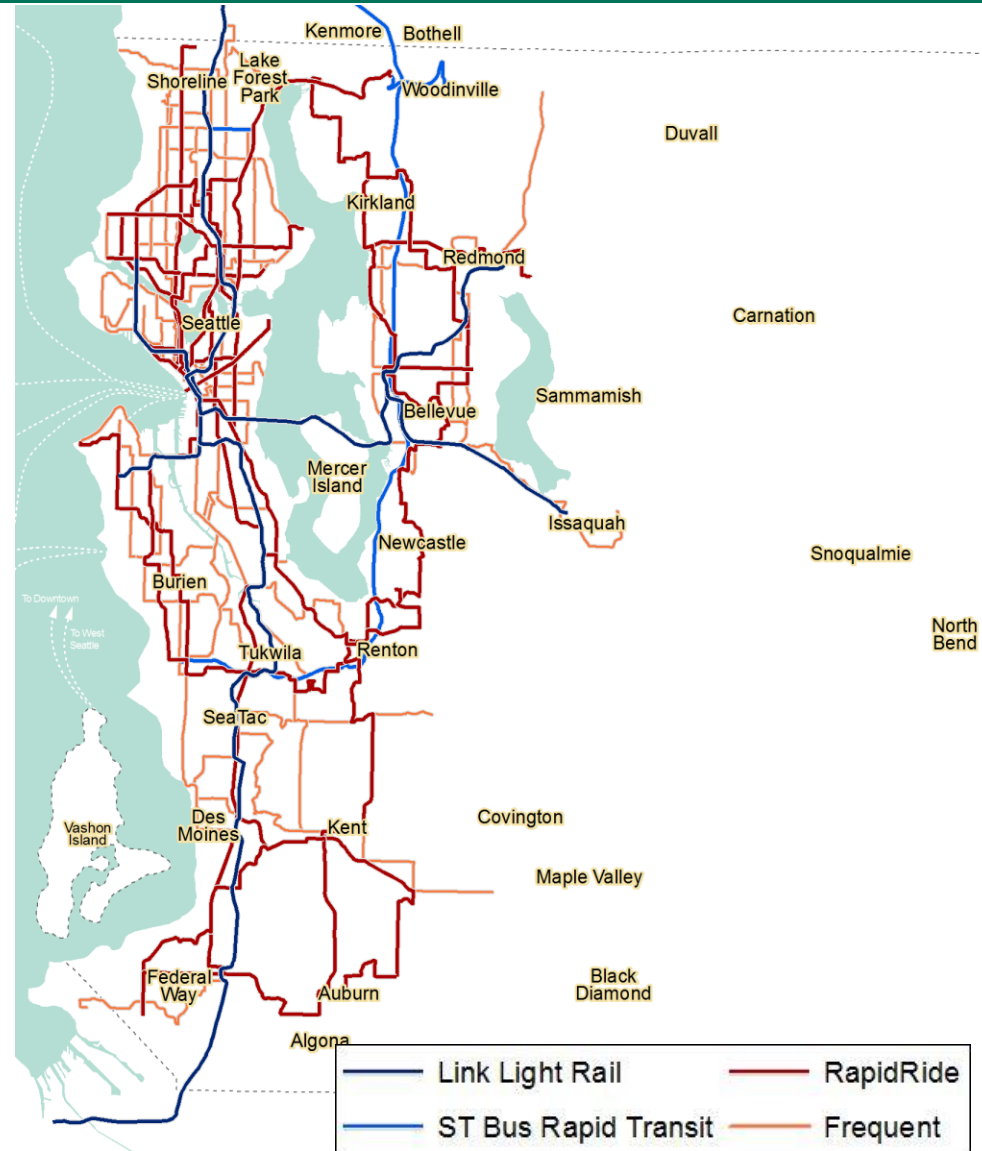
More Service

2040 Service Network

Frequent Service



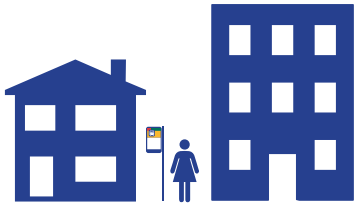
Expand **RapidRide** with 20 new lines and 300 miles of new or enhanced service.



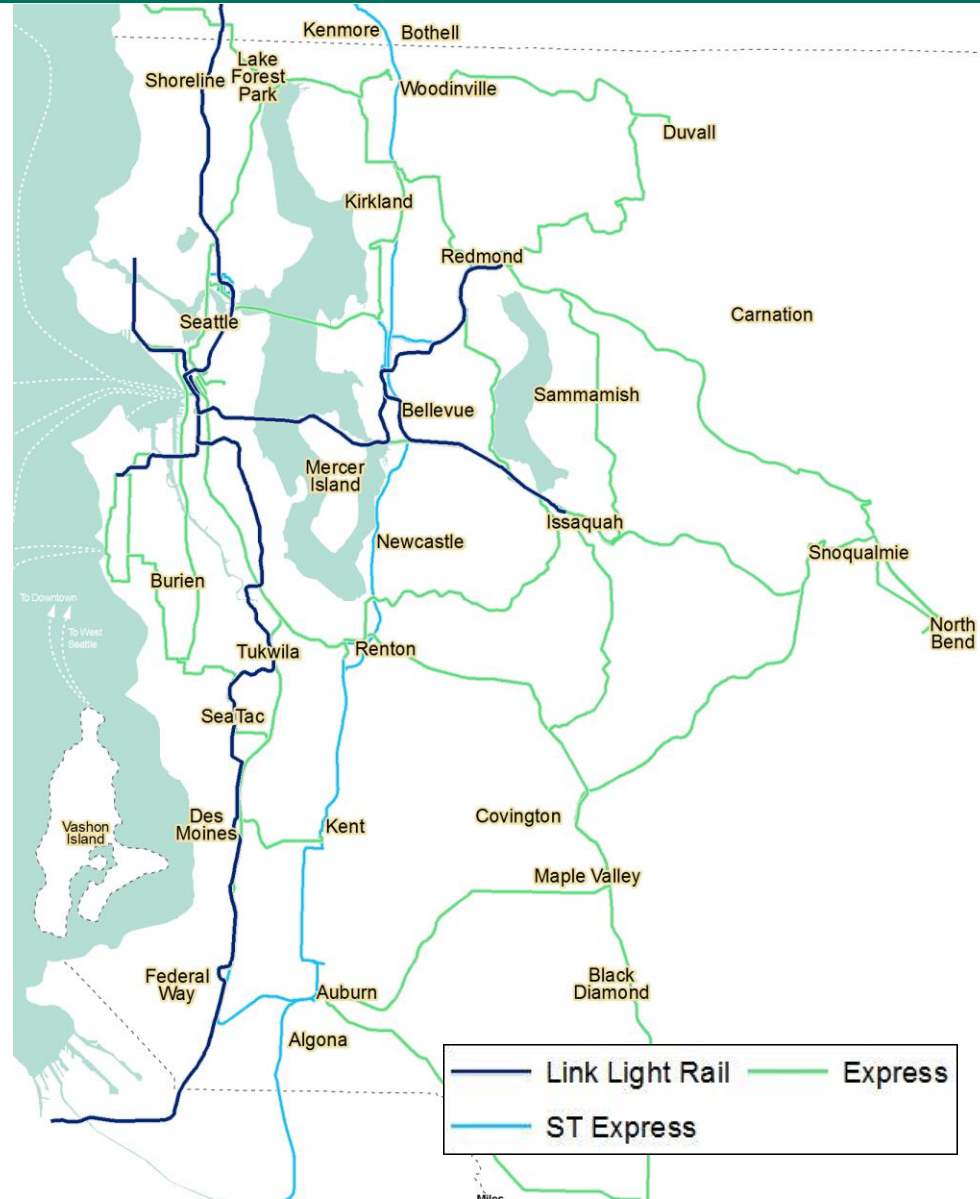
More Service

2040 Service Network

Express Service



Connect centers where many people live and work across King County



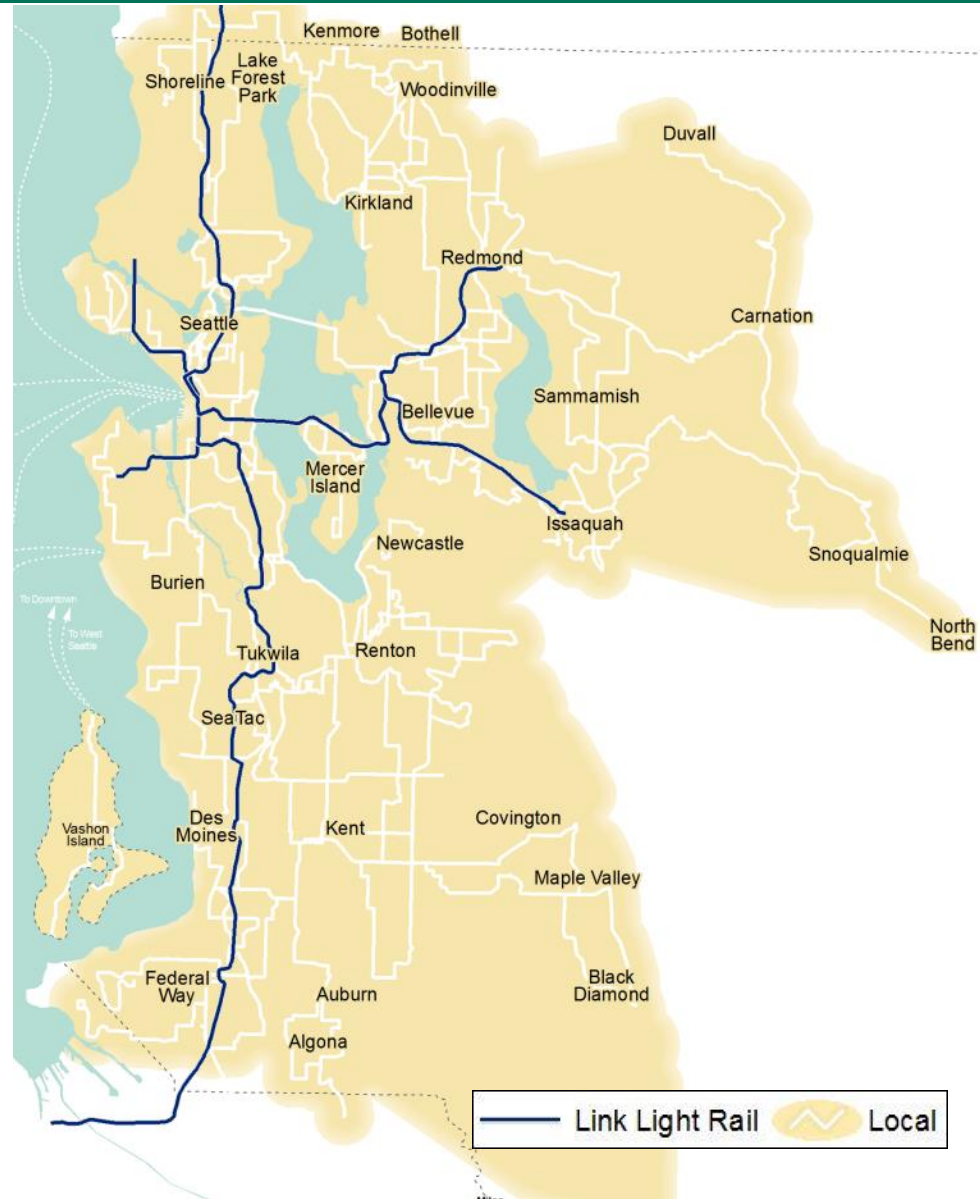
More Service

2040 Service Network

Local Service



Right type of transit or alternative service for local travel and first/last mile connections



More Service

2040 Service Network

Frequent Service



Express Service

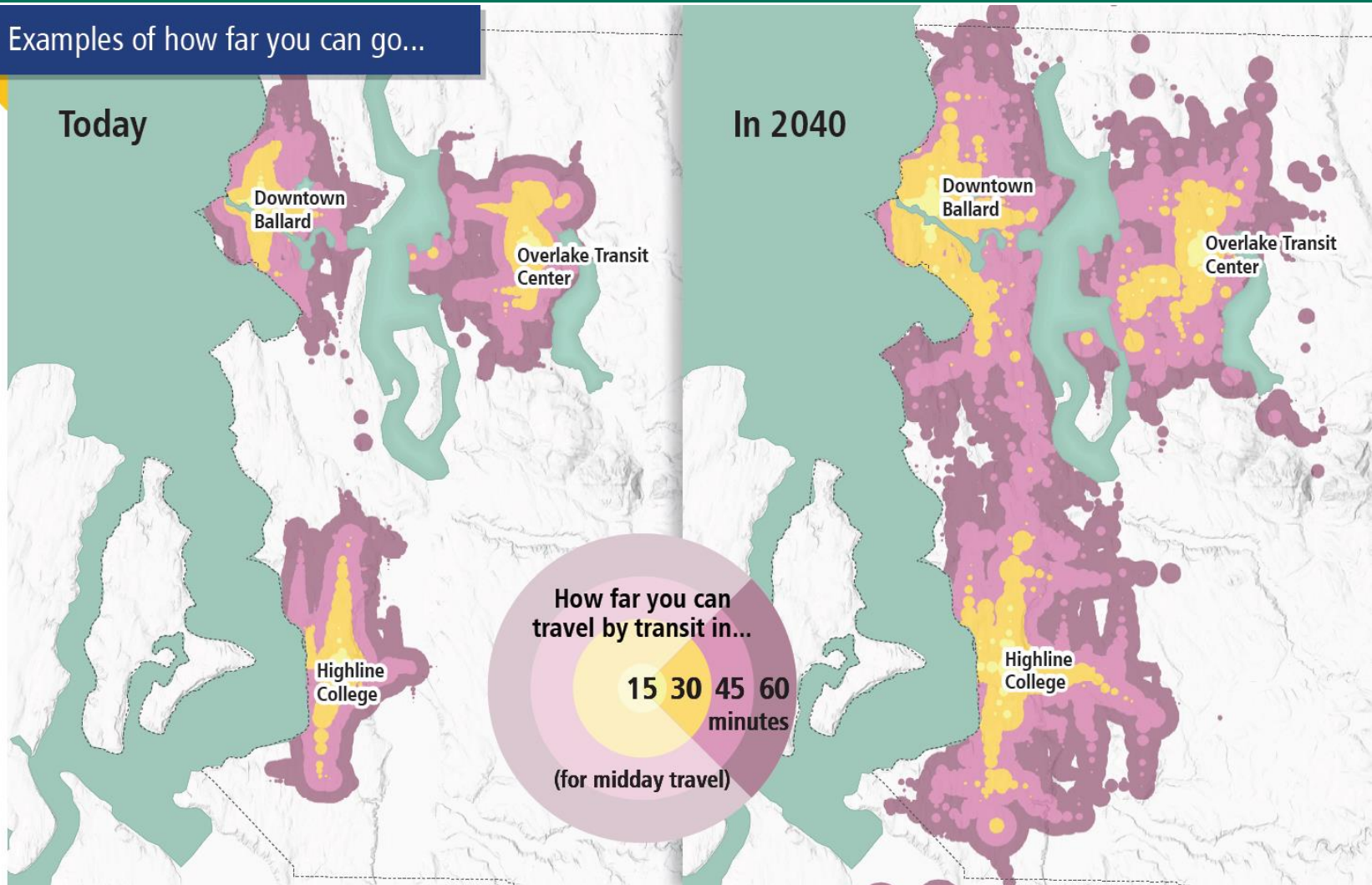


Local Service



How far you can go

Examples of how far you can go...



The travel sheds shown on the maps above include walking time, average amount of time waiting for the bus (assumed to be half the frequency), travel time, and any transfer time between buses.

The starting point for each example is: downtown Ballard—15th Ave NW and NW Market St; Overlake Transit Center—NE 40th St and 156th Ave NE; Highline College—S 240th St and Pacific Hwy S.

Service you can count on

Investments to help buses run faster and stay on schedule:

- Bus lanes, signal priority, off-board ORCA readers
- 600 miles of roadway investments for all service types
- Significant expansion to Metro's capital program
- Requires strong partnerships with cities



More Choices to Meet Many Needs



Expanded Range of Options:

- Provide alternative services where traditional local service does not fit
- Integrate city planning and transit planning
- Develop new products through research and development
- Move toward faster and easier payments with ORCA 2
- Make it easier to move between Metro and other providers

Easy, Safe, and Comfortable



Make it easier to get where you want to go:

- New and better information for customers and to improve operations
- Improvement to make easy connections to transit
- Safe and well-designed passenger facilities
- Make getting on the bus fast and easy

Park-and-Rides

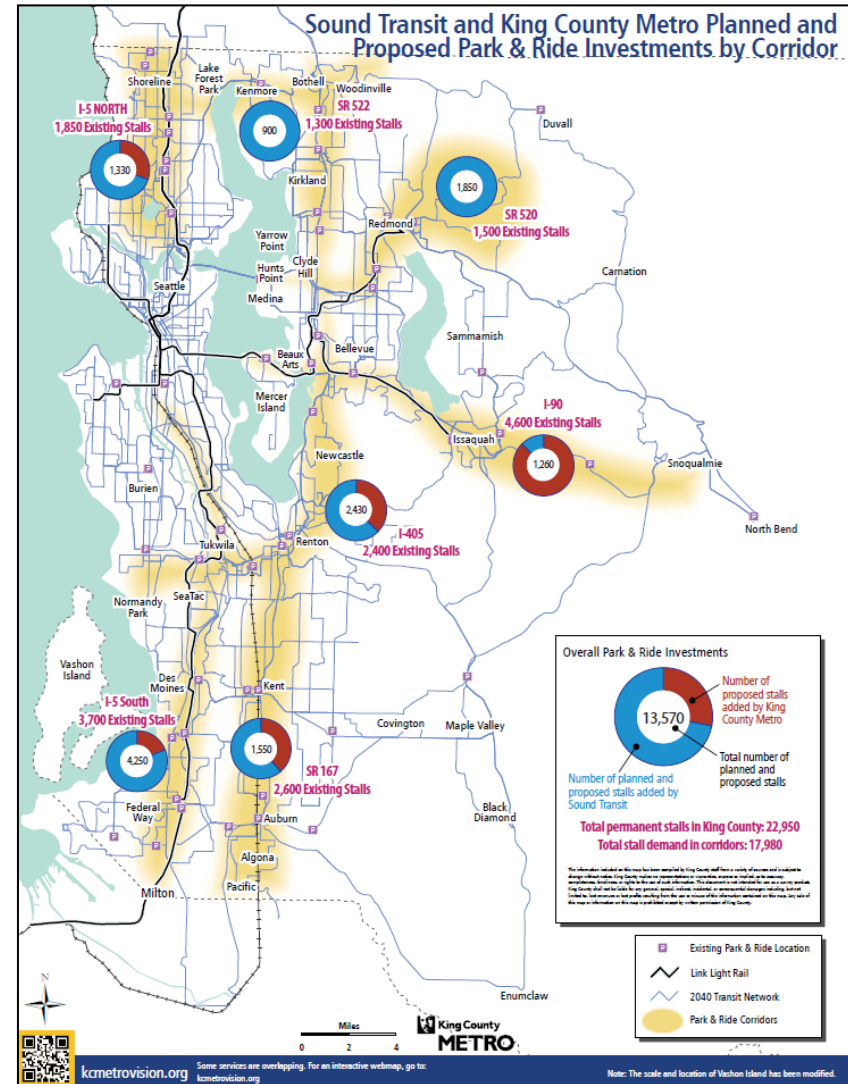
More spaces

- Over 40% more park-and-ride stalls in 2040*
- Investment focused in areas of low development & transit density
- Opportunities for more leased lots, shared parking, on-street options

Increased efficiency

- Increase utilization through more rideshare, restriping
- Technology improvements like real-time parking info & communication
- Use paid parking to better manage capacity

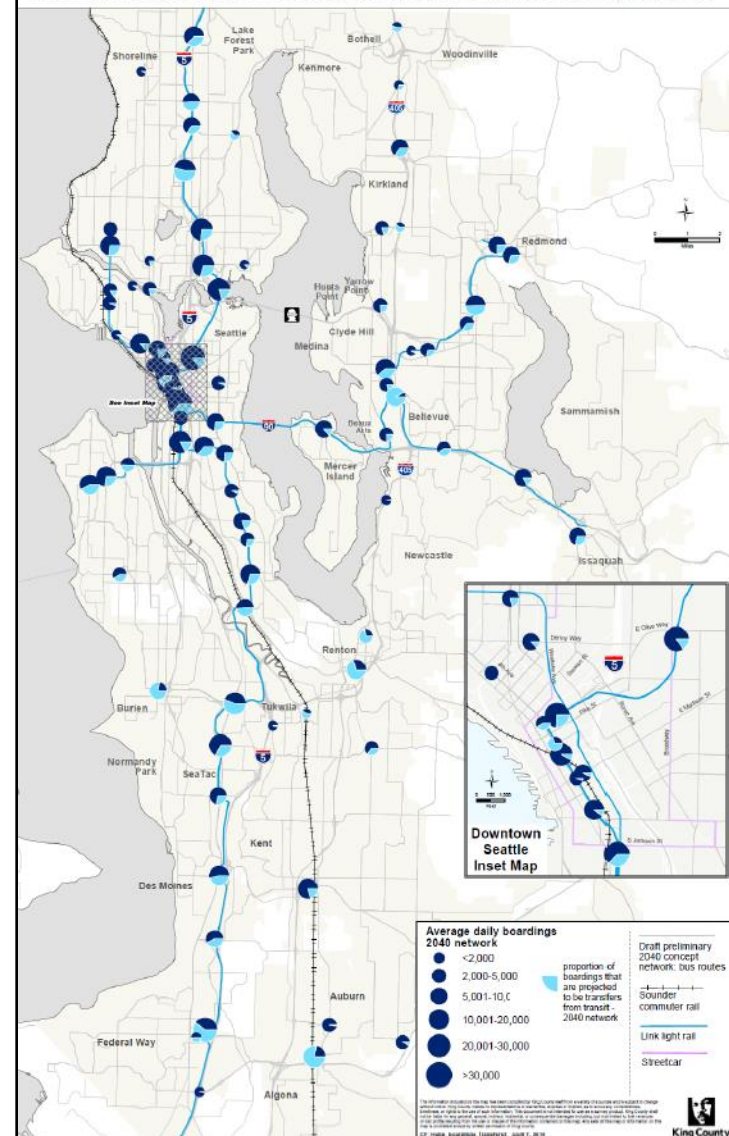
* Includes proposed Sound Transit investments



Community Investments



2040 Conceptual Network - Major Transit Hubs and Stations: Boardings/Transfers



The Nuts and Bolts

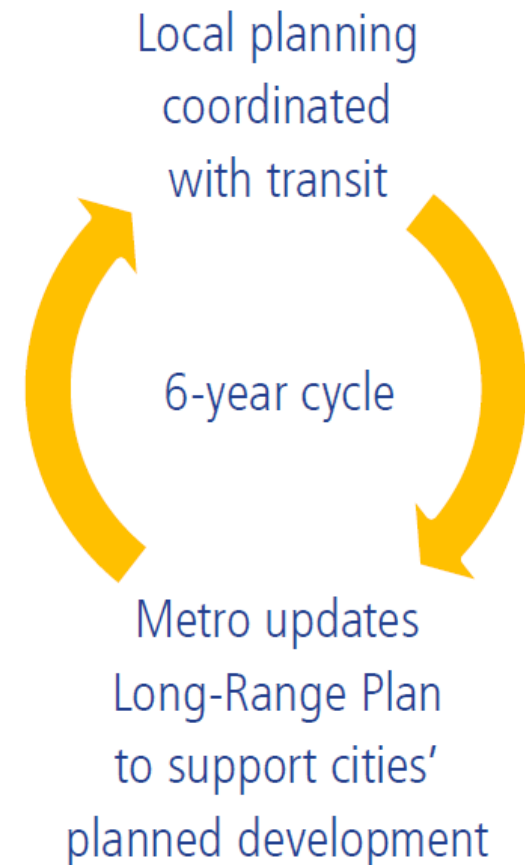


- **Our people:** substantially grow our workforce to support the expansion of service
- **A fleet for the future:** buy more than 500 new buses and vans to support the higher levels of service
- **Trolley network:** Grow our trolley network by expanding and infilling overhead wires
- **Layover areas:** Increase bus layover space by 50% from today
- **Bus bases and support facilities:** Add two to three new bus bases and invest additional support services and facilities.

Implementing the Vision

Transit system will require substantial capital and service investments

- Strengthen partnerships with cities, stakeholders and other transportation providers
- Work with cities to ensure improvements are a good fit for each community
- Long-range plan to support local planning and identify complementary transit service



Learn More and Give us Feedback



Visit kcmetrovision.org



Sign up for updates



Send us your comments



Attend an event



Attend a Community Advisory Committee meeting



Join the conversation on social media
#kcmetrovision



Take our online survey

May 20 – Public comment ends on the draft METRO CONNECTS plan

Upcoming Evening Joint Sound Transit & King County Metro open houses:

- April 27 – Old Redmond Schoolhouse
- April 28 – Union Station (Daytime)
- April 28 – Todd Beamer High School (Federal Way)

A yellow Metro RapidRide bus is stopped at a bus stop. The bus has 'RAPIDRIDE' and 'METRO' branding. The bus stop has a white and red sign that says 'RAPIDRIDE'. The background shows a blue sky with clouds.

Questions?

Contact us:

Stephen Hunt

Transportation Planner

Stephen.Hunt@KingCounty.gov

206-477-5828

Tristan Cook

Community Relations Planner

Tristan.Cook@KingCounty.gov

206-477-3842