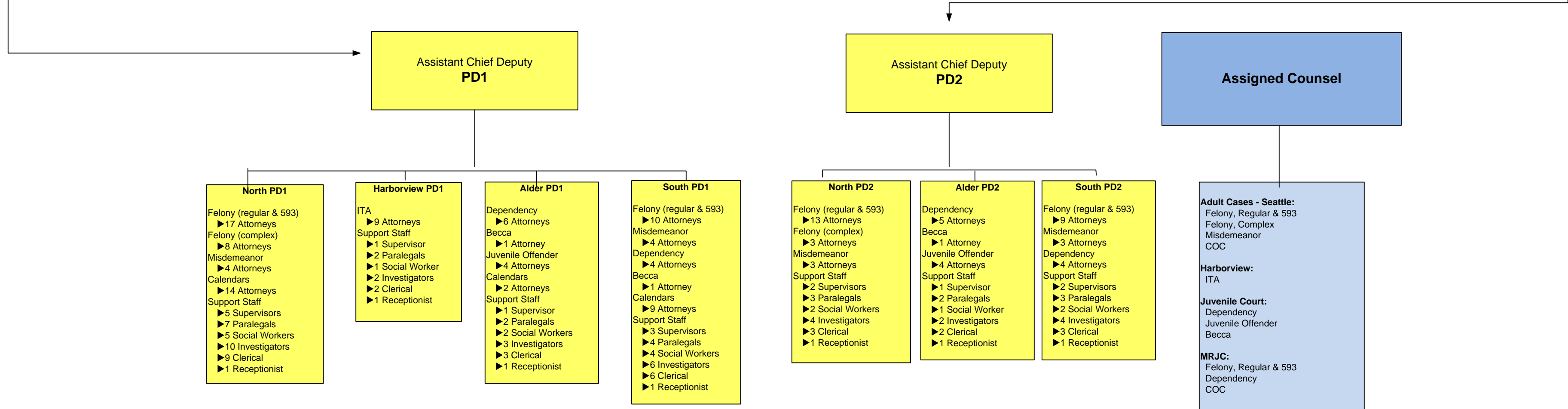
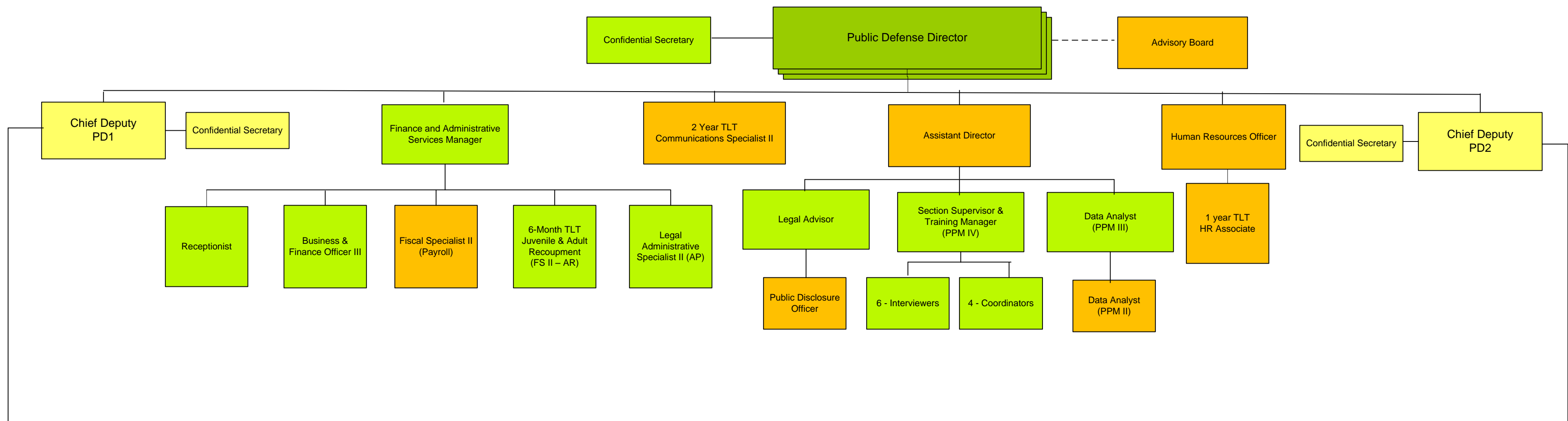


# DRAFT



**PD 1 – 60%**  
 Managers = 2  
 Confidential Secretary = 1  
 Receptionists = 4  
 Attorneys = 93  
 Supervisors = 10  
 Paralegals = 15  
 Social Workers = 12  
 Investigators = 21  
 Clerical = 20  
**Total FTE = 178**

**PD 2 – 40%**  
 Managers = 2  
 Confidential Secretary = 1  
 Receptionists = 3  
 Attorneys = 45  
 Supervisors = 5  
 Paralegals = 8  
 Social Workers = 5  
 Investigators = 10  
 Clerical = 8  
**Total FTE = 87**

- Current OPD Employees
- New Public Defense Positions
- PD1 and PD2 Staffing
- Assigned Counsel

**Notes:**  
 FTE built on budgeted 2013 case credits