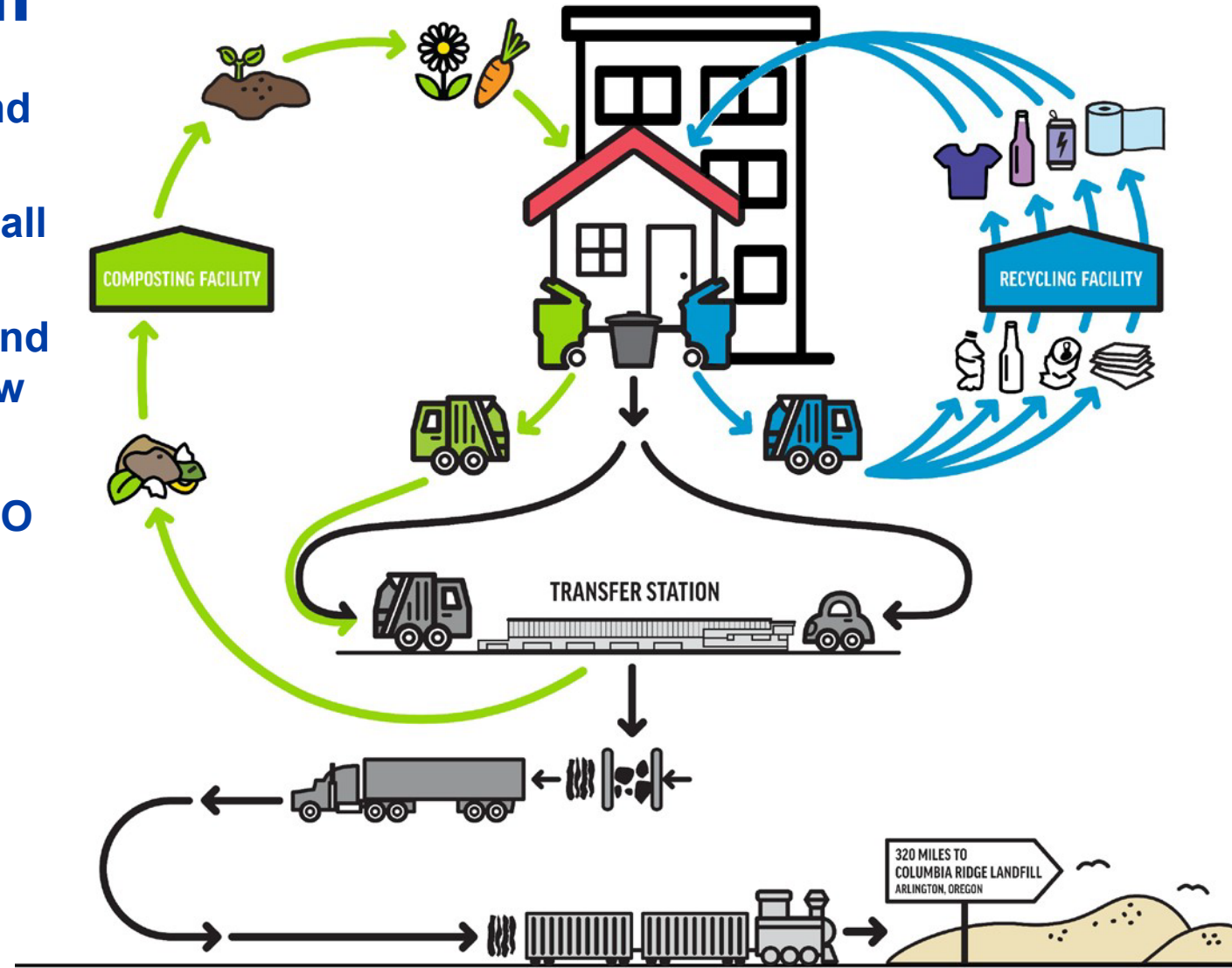


Seattle's Solid Waste System

- All customers must have garbage, recycling, and organics collection
- SPU contractors collect all 3 waste streams for all residents
- Commercial customers can arrange recycling and organics services on their own, per WA state law
- Garbage hauled by rail to a landfill in Oregon
- Recyclables processed at Republic MRF in SODO
- Organics processed at Compost Facilities
 - Lenz Enterprises (Stanwood)
 - Cedar Grove (Everett & Maple Valley)
- Most commercial customers use composting services, but some use alternatives (e.g. animal feed, anaerobic digestion)



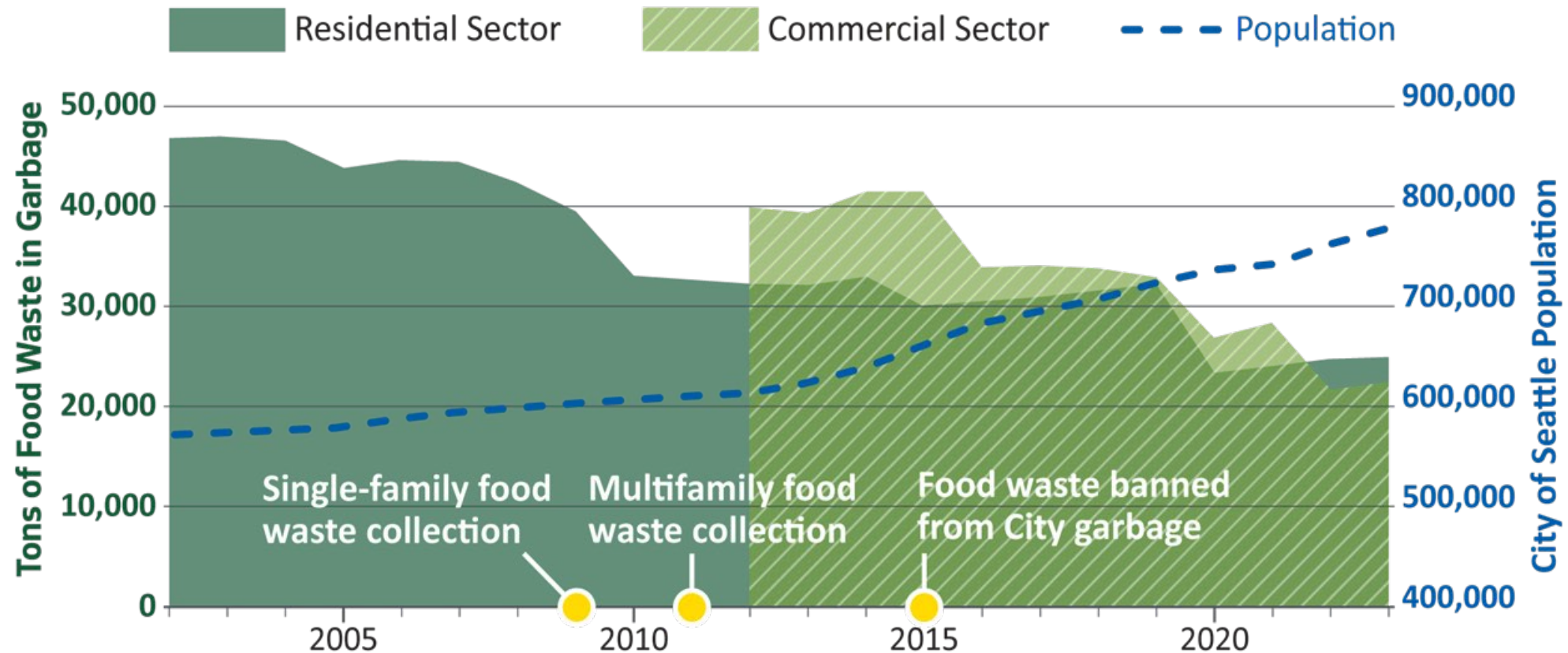
Key organics policies in Seattle

- 1985 – Backyard composting education began
- 1989 – Required separation of yard waste from garbage
- 2005 – Vegetable food waste accepted in organics collection cart
- 2009 – All food waste accepted & mandatory service subscription for single family customers
- 2011 – Mandatory service subscription for multifamily & commercial customers
- 2015 – Food waste banned from the garbage



Looking ahead: a focus on food

Estimated Tons of Food Waste in Garbage, 2002 - 2023



Where to go to learn more: www.seattle.gov/utilities

Food & Yard



Food & yard waste (or compost) service, is required for every home and business in Seattle. It's an important part of sorting your waste that helps the environment and cuts down on your waste costs.

- **What can I compost?** Fruit and vegetables, yard trimmings, meat, dairy, and fish are all accepted, but what else goes in your food and yard waste cart? Watch this [video about items to compost](#) (Translations: [Mandarin](#) | [Cantonese](#) | [Spanish](#) | [Vietnamese](#))
- **When in doubt:** Look things up in [the Where Does it Go? tool](#).
- **Sorting it out:** View [kitchen storage ideas](#) to make it easier to sort your compost at home.
- **How much does it cost?** Food & yard waste service [costs less than garbage](#). Putting all compostables in your compost cart saves you money.

Stop Food Waste

40% of food in the U. S. goes uneaten...

What you can do

You can reduce your food waste at home in lots of ways. Try our [tips to help you waste less food](#) (PDF) to see what works for you. Select below for tools and information.

- [Buy only what you need](#)
- [Eat fresh, local food](#)
- [Store food to stay fresh longer](#)
- [Freeze food for later](#)
- [Love your leftovers](#)
- [Help your community](#)



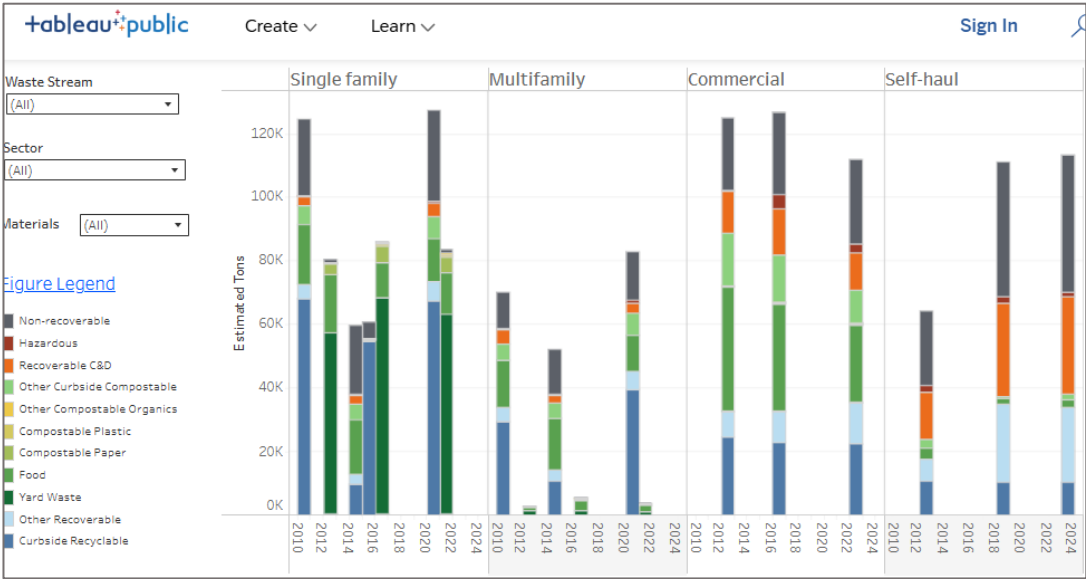
Why wasting food matters

When we waste food, we also waste all the money and resources it takes to get food from the farm to our homes. That waste hurts our climate and the health of our communities.

Solid Waste Reports

Seattle Public Utilities' (SPU) uses data to inform city solid waste programs and services. SPU tracks and analyzes a variety of tonnage, transfer station usage, and recyclables market data. The analyses appear in the following reports, which are in PDF format unless otherwise noted:

- [Annual Waste Prevention and Recycling Reports \(2007 to present\)](#)
- [Solid Waste Quarterly Reports – Garbage, Organics, and Recycling](#)



Where to go to learn more: www.seattle.gov/utilities

Help Residents Recycle and Compost

How to train residents

1. The best time to train residents on how to sort correctly is during move-in. For best results, talk to residents in person and physically show them the containers used for recycle, compost, and garbage.
2. Use [this sample letter to residents](#) (PDF) to notify them by writing about where the recycle and compost collection areas are located in the building.
3. Make sure that each unit has a container to collect recyclables and a food waste scrap container. You can request stickers for the recycle bin and food waste scrap containers below.
4. Include the sorting guidelines in the move-in package. Request free sorting guidelines in different languages below.



Download a flyer showing the most common types of items in your chosen language. (PDF)

[English](#) | [አማርኛ \(Amharic\)](#) | [عربي \(Arabic\)](#) | [中文 \(China\)](#) | [हिन्दी \(Hindi\)](#) | [日本語 \(Japanese\)](#) | [ខ្មែរ \(Khmer\)](#) | [한국어 \(Korean\)](#) | [Oromoo](#) | [русский язык \(Russian\)](#) | [Soomaali \(Somali\)](#) | [Español \(Spanish\)](#) | [Tagalog](#) | [ትግርኛ \(Tigrinya\)](#) | [Tiếng Việt \(Vietnamese\)](#)



City of Seattle