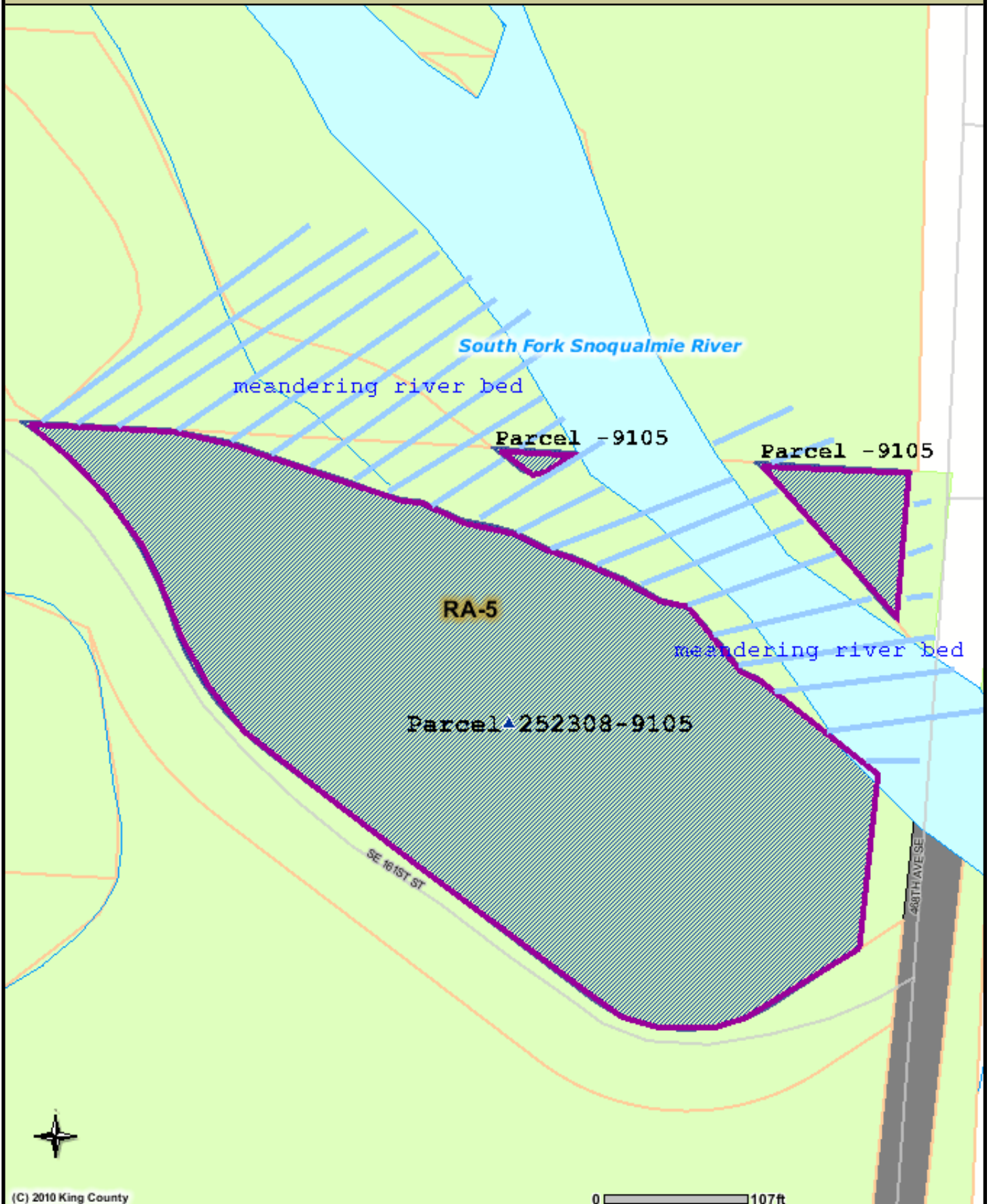


PARCEL VIEW - EDGEWICK BRIDGE PARCEL



The information included on this map has been compiled by King County staff from a variety of sources and is subject to change without notice. King County makes no representations or warranties, express or implied, as to accuracy, completeness, timeliness, or rights to the use of such information. This document is not intended for use as a survey product. King County shall not be liable for any general, special, indirect, incidental, or consequential damages including, but not limited to, lost revenues or lost profits resulting from the use or misuse of the information contained on this map. Any sale of this map or information on this map is prohibited except by written permission of King County.

Date: 4/7/2011 Source: King County iMAP - Property Information (<http://www.metrokc.gov/GIS/IMAP>)



PARCEL VIEW - EDGEWICK BRIDGE PARCEL

Legend

 County Boundary	 Open Space	 R-12 - Residential, 12 DU per acre
 Mountain Peaks	 Easement	 R-18 - Residential, 18 DU per acre
 Highways	 Right of Way	 R-24 - Residential, 24 DU per acre
 Forest Production District Boundary	 Tax Title	 R-48 - Residential, 48 DU per acre
 Agricultural Production District Boundary	 Parcels	 NB - Neighborhood Business
 Urban Growth Area Line	 Parks	 CB - Community Business
 Incorporated Area	Unincorporated KC Zoning	 RB - Regional Business
Streets	 A-10 - Agricultural, one DU per 10 acres	 O - Office
 Highway	 A-35 - Agricultural, one DU per 35 acres	 I - Industrial
 Arterials	 F - Forest	 Other
 Local	 M - Mineral	
 Lakes and Large Rivers	 RA-2.5 - Rural Area, one DU per 5 acres	
 Streams	 RA-5 - Rural Area, one DU per 5 acres	
 Tribal Lands	 RA-10 - Rural Area, one DU per 10 acres	
 King County Property Interests	 UR - Urban Reserve, one DU per 5 acres	
 Fee simple ownership	 R-1 - Residential, one DU per acre	
(cont)	 R-4 - Residential, 4 DU per acre	
	 R-6 - Residential, 6 DU per acre	
	 R-8 - Residential, 8 DU per acre	
	(cont)	

The information included on this map has been compiled by King County staff from a variety of sources and is subject to change without notice. King County makes no representations or warranties, express or implied, as to accuracy, completeness, timeliness, or rights to the use of such information. This document is not intended for use as a survey product. King County shall not be liable for any general, special, indirect, incidental, or consequential damages including, but not limited to, lost revenues or lost profits resulting from the use or misuse of the information contained on this map. Any sale of this map or information on this map is prohibited except by written permission of King County.

Date: 4/7/2011

Source: King County iMAP - Property Information (<http://www.metrokc.gov/GIS/IMAP>)



King County