

# Board of Health Retreat

Social Determinants of Equity  
May 20, 2021

# Thanks and Appreciation to...

- Board Chair **Joe McDermott** (King County Council, District 8)
- Director **Patty Hayes** (Public Health – Seattle & King County)
  
- **Susie Levy** (Public Health – Seattle & King County)
- **Lan Nguyen** (Office of Councilmember McDermott)
- **Sam Porter** (Public Health – Seattle & King County)
  
- Dr. **Bill Daniell** (Health Professionals Seat, Board of Health)
- Dr. **Chris Delecki** (Health Professionals Seat, Board of Health)

# Goal & Intention

- Deepen Board's understanding about the influence of societal inequities on population and community health to inform its approach to advancing a just public health agenda
- Foster Board's orientation to public health deliberation, decision making, and action that critically applies equity as a principle to counter systems of oppression, notably racism, that result in disproportionate, unjust burden of injury, illness, disease, and death among marginalized groups

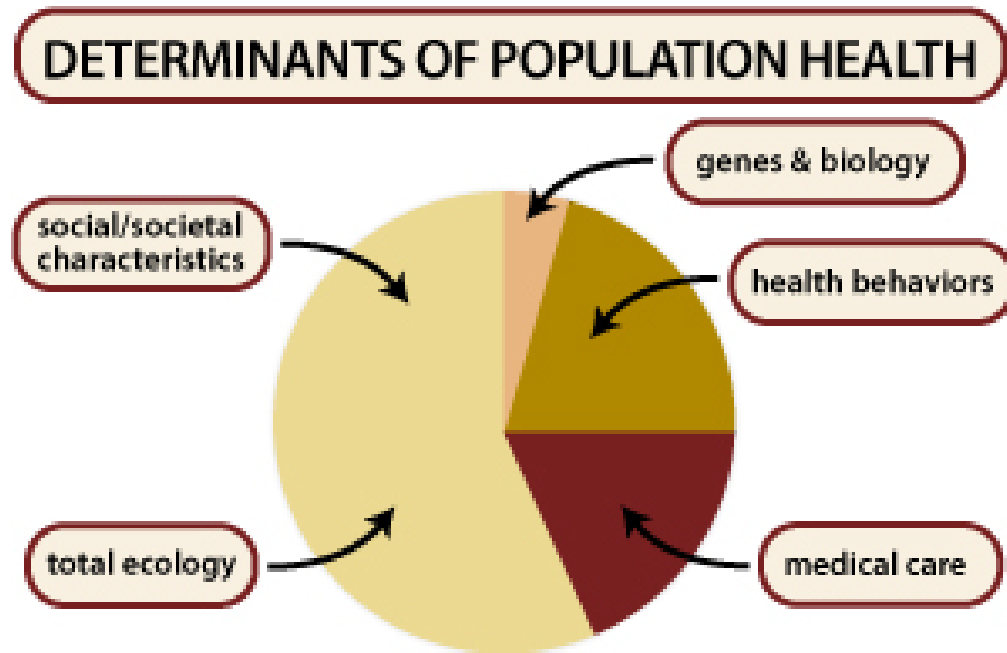
# Objectives & Structure

1. Distinguish social determinants of equity from social determinants of health, and how each impact health (May)
  2. Identify ways social inequities shape real-world circumstances that advantage and disadvantage groups of people and their well-being (June)
  3. Apply a framework that centers equity in information gathering, policy analysis, priority setting, and action determination (July)
- Pre-work before each session; in meeting presentation; small group discussion

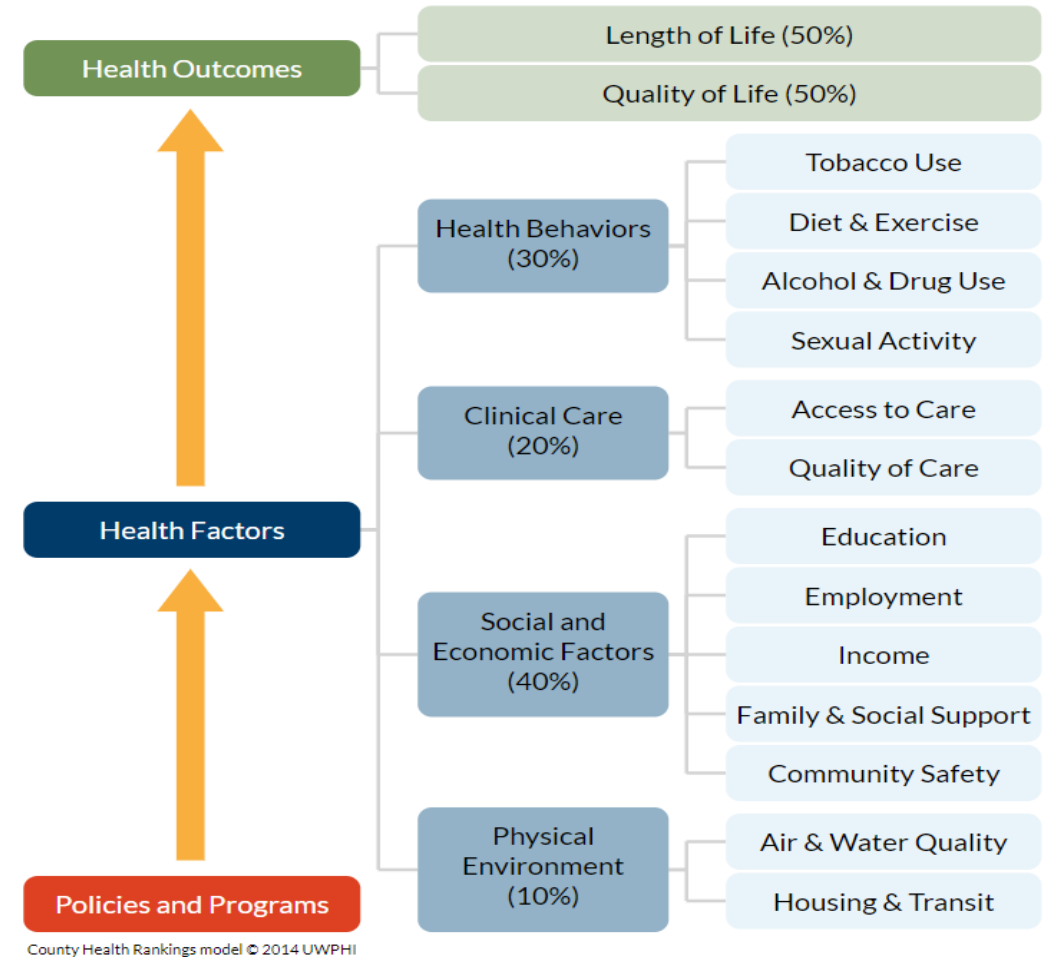


- Health: A state of **complete** physical, mental and social well-being and **not merely the absence** of disease or infirmity.
- Community Health: Environmental, social, and economic **resources** to sustain emotional and physical well being among people in ways that advance **their aspirations** and satisfy **their needs** in **their unique environment**.

# Social Determinants: Well-Established Role



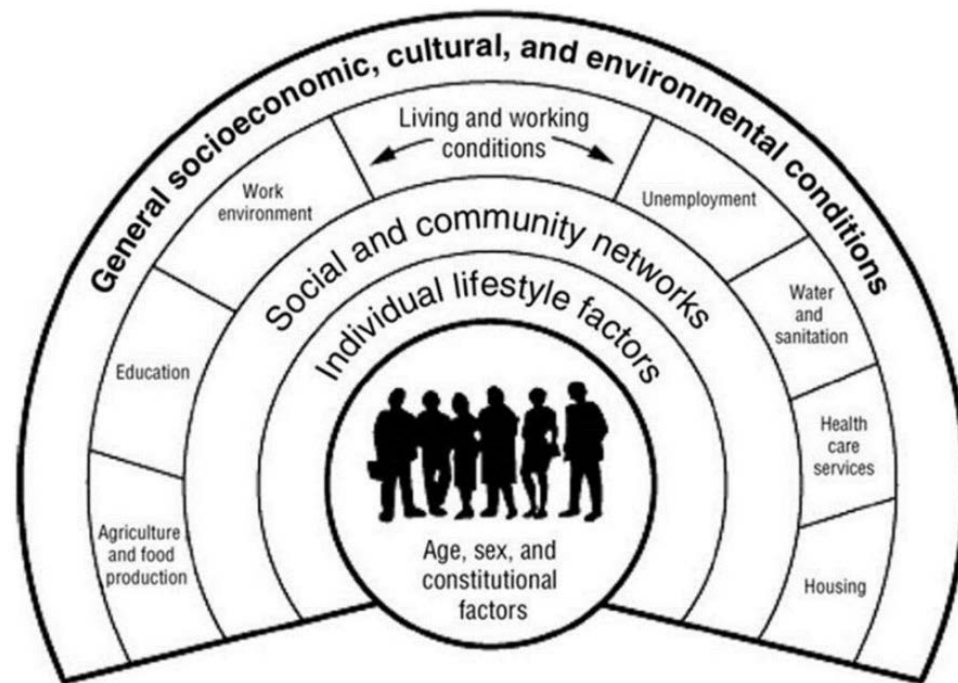
Tarlov AR. Public policy frameworks for improving population health. *Ann NY Acad Sci.* 1999;896(1):281-293.



County Health Rankings Model of Community Health

# SOCIAL DETERMINANTS OF HEALTH

- Conditions where people are born, live, learn, work, play, worship, and age
- Causes of the causes



Source: Dahlgren and Whitehead (1991)



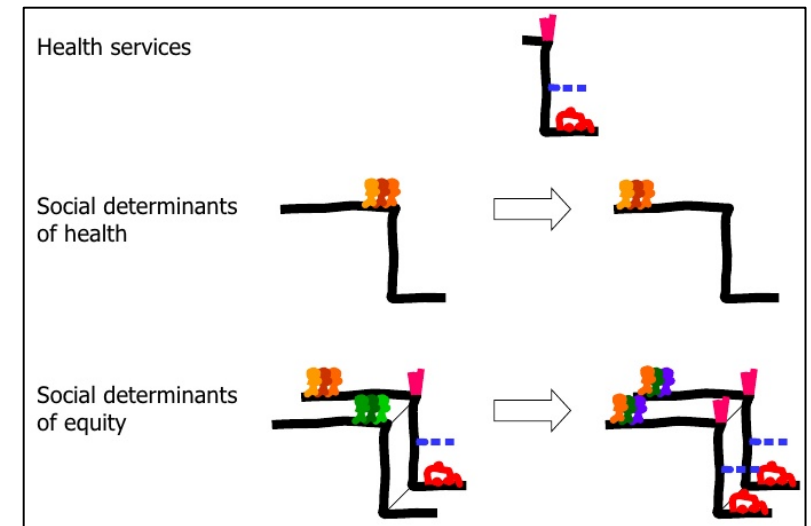
# How do societal factors determine health?

- **Lack of local grocery store** with fresh fruits, vegetables, and other healthy foods diminishes nutrition, contributing to hypertension, heart disease, hypertension
- **Discriminatory experiences or lack of community safety** produce feelings of marginalization, isolation, depression, anxiety; or risk of injury or death through violence
- **Employment and income stability** relieves chronic stress and enhances sleep quality reducing stress hormone levels, reducing smoking, alcohol, or drug use
- **Accessibility to walkable green spaces and bicycle lanes** encourages physical activity and results in weight management

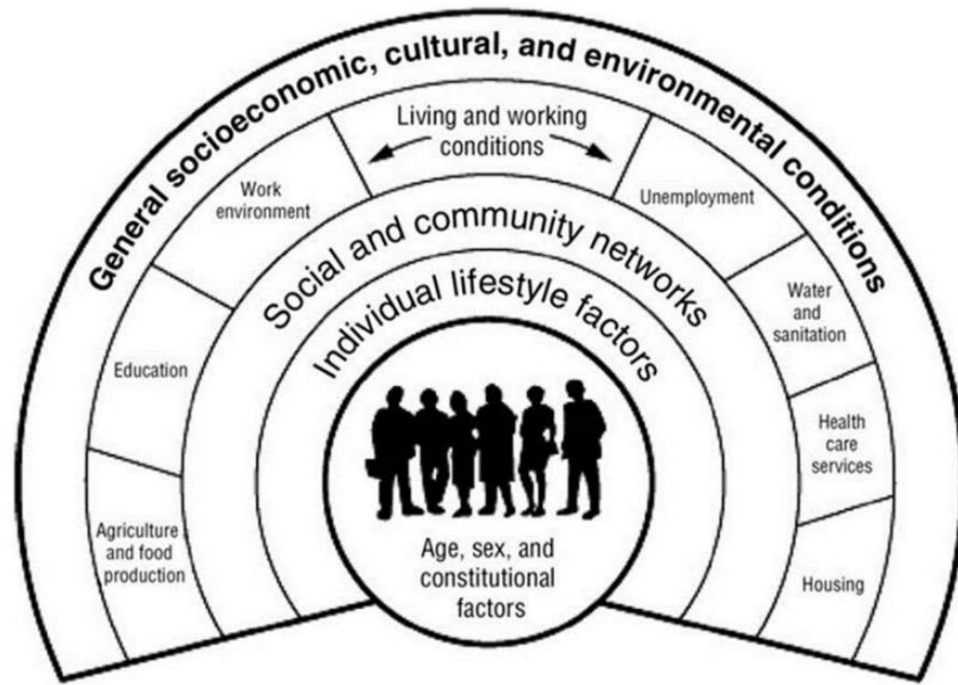


# Beyond the Causes of the Causes

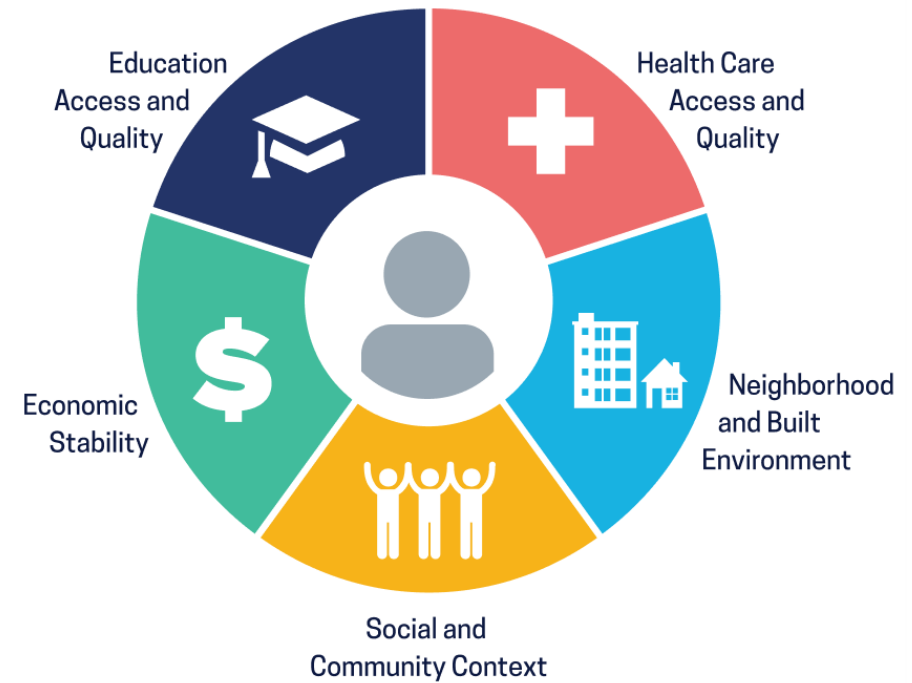
- Per Dr. Camara Jones et al.'s Cliff Analogy, need to address **Social Determinants of Equity**
  - **Structures, policies, practices, norms, and values that differentially distribute *resources and risks***
  - **Factors that determine the range of *contexts observed in a given place and time*, and the **distribution of different populations** into those different contexts**
- Forces further upstream that dictate distribution of...
  - Social determinants of health; what/how things are allocated
  - People based on identity/ies; who is dis/empowered to benefit



# SOCIAL DETERMINANTS OF HEALTH

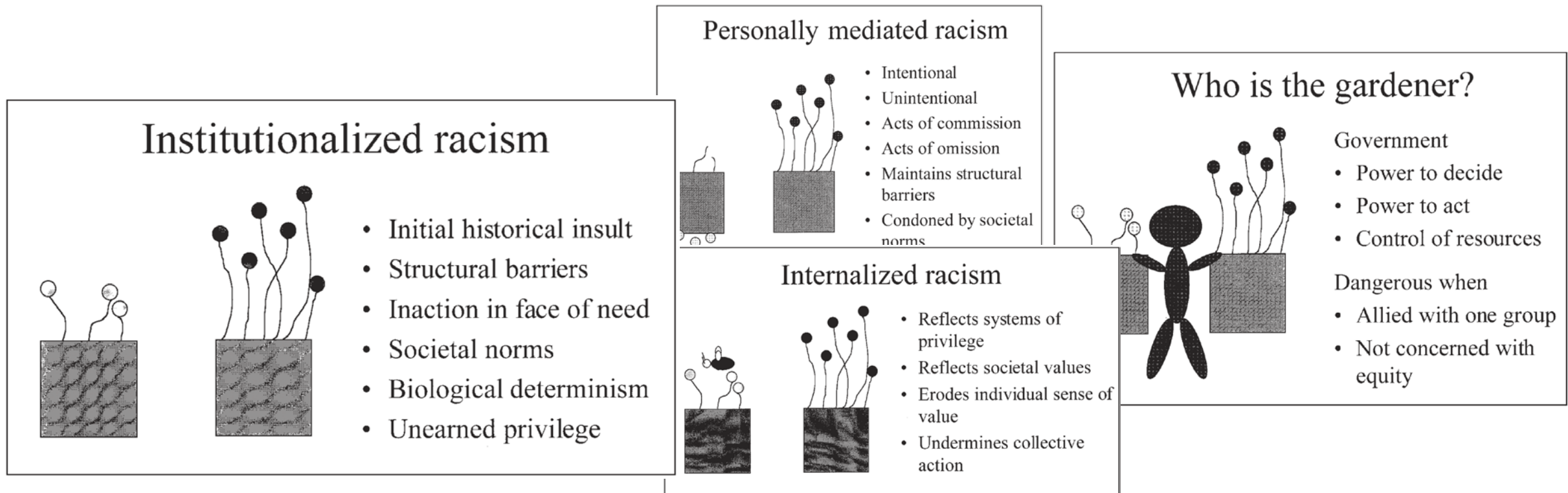


Source: Dahlgren and Whitehead (1991)



# Racism as a Social Determinant of Equity

- Per Dr. Camara Jones' A Gardener's Tale:



# King County Equity & Social Justice Strategic Plan





RACISM ABLEISM GENDERISM SEXISM

AGEISM CLASSISM NATIVISM NEOCOLONIALISM



RACISM ABLEISM HETEROSEXISM GENDERISM

AGEISM CLASSISM NATIVISM NEOCOLONIALISM

Access to parks and natural resources  
Equity in County practices  
Access to affordable, healthy, local food  
Community  
Equitable law and justice system  
Public safety  
Access to safe and efficient transportation  
Quality  
Access to health and human services  
Family wage jobs and job training  
Early childhood development  
Economic development  
Built and natural environments



Affordable, safe, quality housing  
Access to parks and natural resources

Equity in County practices  
Access to affordable, healthy, local food

Quality education  
Family wage jobs and job training  
Early childhood education

Access to health and human services  
Healthy built and natural environments







Affordable, safe, quality

Access to parks and natural resources

Equity in

Access to affordable

Local food

Family well-being

Early childhood

Human services

and natural environments

Job training

# Moving Forward...

- Intentionality to address social determinants of equity as well as social determinants of health
- Consistency in centering equity in deliberation, analysis, and action on issues
- Recognize need for collaboration and efforts in concert with other agencies, organizations, entities, and community groups