



King County
Local Services

How can we serve you?



Local Services and Land Use Committee

January 25, 2022

John Taylor, Director

Unincorporated King County

- 7 Community Service Areas
- 5 potential annexation areas



Special programs and projects

1. Conservation corps
2. Community van program
3. Fall City septic system
4. Skyway community center
5. White Center fires — business support
6. Small business grants



Upcoming Legislation

- Community Needs List – North Highline & Skyway-West Hill – due 3/31/22
- Subarea Plans for North Highline & Skyway-West Hill – due 3/31/22
- Inclusionary Housing Code Ordinance – due 3/31/22
- Townhouse Accessory Dwelling Unit Analysis Report & Motion – due 6/30/22
- North Highline Urban Design Implementation Strategies Study & Motion – due 6/30/22
- Fireworks Enforcement Report – due 6/30/22
- Electric Vehicle (EV) Rebate Program Report – due 6/30/22



Permitting Division

Jim Chan, Director

Mark Rowe, Deputy Director



King County

Local Services

The King County Permitting Division provides land use, building, and fire regulatory and operating permits, code enforcement, and a limited number of business licenses in unincorporated areas of the county.

Permits

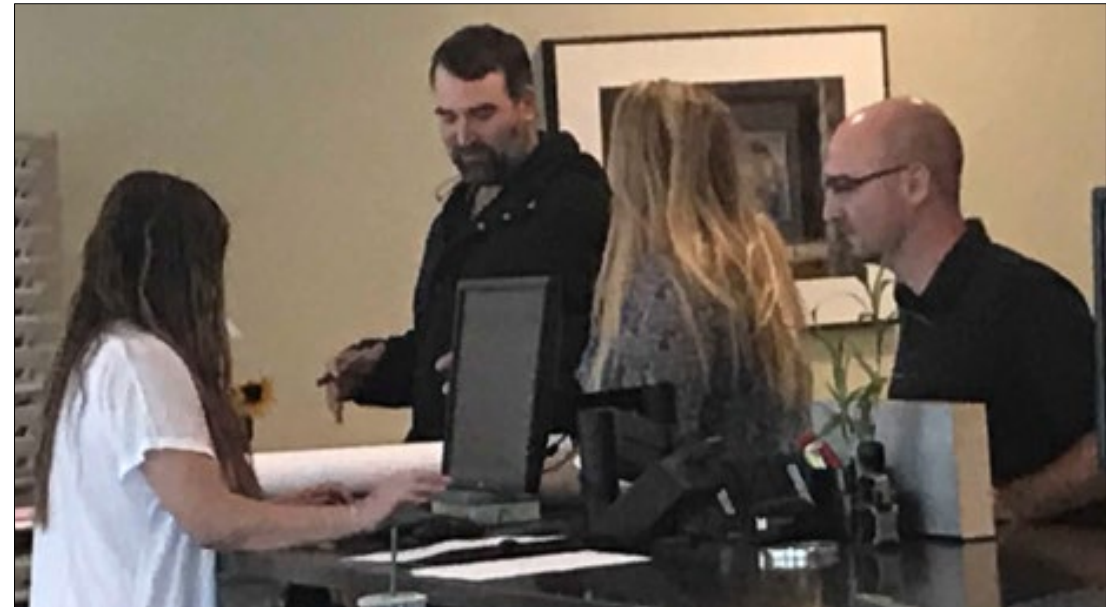
The King County Permitting Division provides land use, building, and fire regulatory and operating permits, code enforcement, and a limited number of business licenses in unincorporated areas of the county.

<p>Permits ></p> <p>Permit information and start the process for residential, commercial, land use, and other types of permits.</p> <p>Permit status</p> <p>Pay Invoices</p>	<p>Inspections ></p> <p>Inspection line (IVR), 888-546-7728</p> <p>IVR inspection codes and other agency inspection information</p> <p>Schedule an inspection online</p>	<p>Property Research ></p> <p>Check your jurisdiction and zoning information to help start your permit process. Resources include interactive maps and data to check jurisdiction, zoning and other property information.</p>
<p>Code enforcement ></p> <p>Find out what types of violations we investigate and the process to file a complaint.</p> <p>File a complaint</p>	<p>Business licenses ></p> <p>Learn what types of regulated businesses King County requires business licenses for regulated activities.</p>	



Coming to Permitting in 2022

- Transitioning to permanent hybrid online/storefront operational model
- Additional enforcement for adult beverage/winery ordinance
- Subarea planning
 - ✓ Complete White Center/North Highline
 - ✓ Complete Skyway/West Hill subarea plan
 - ✓ Start Snoqualmie Valley/SE King County
- Delivering townhome accessory dwelling unit proviso response/report
- Legislative priorities





Road Services Division

Tricia Davis, Director


Ruth Harvey, Deputy Director

JoAnn Kosai-Eng, County Roads Engineer



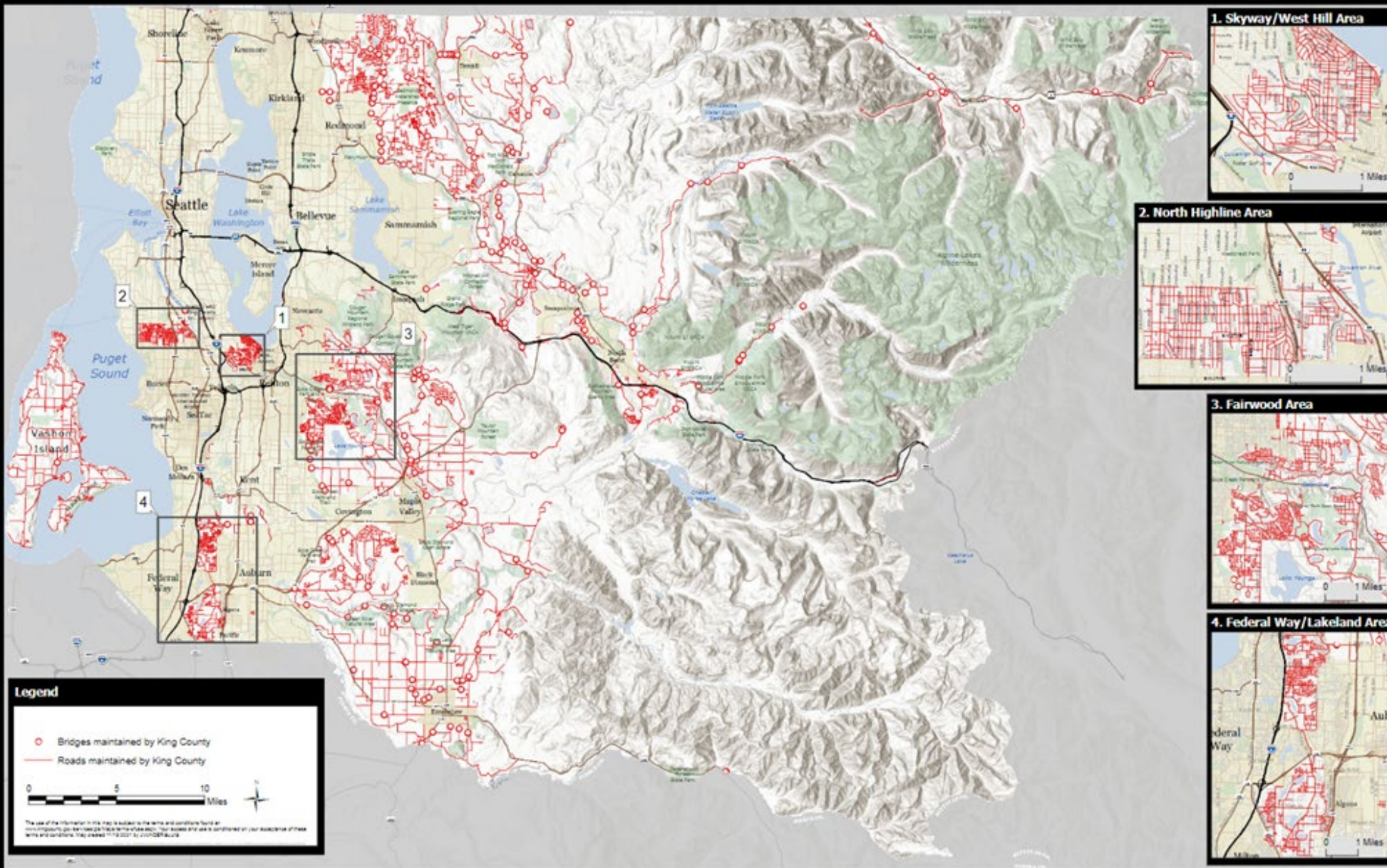
King County
Local Services

Contact us

24/7 Road Helpline - 206-477-8100 | 800-527-6237 | maint.roads@kingcounty.gov |  @kcroads

Unincorporated King County Road Network

King County
Department of Lake, Stream,
and River Services Division



- **1,500 miles of roads and 185 bridges**
- **1 million+ vehicle trips** a day on an aging system of roads and bridges
- **50+% of trips on high-volume roads start in cities and other counties**
- **250,000** residents in unincorporated area, **two million** in King County
- **Insufficient funding and deferred maintenance = a system in decline**



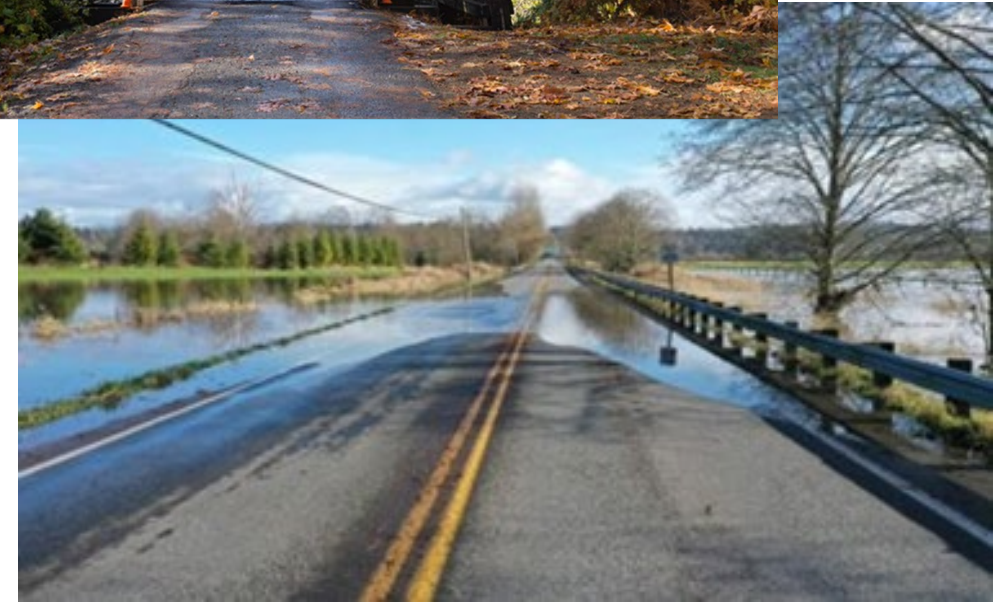
King County
Local Services

Contact us

24/7 Road Helpline - 206-477-8100 | 800-527-6237 | maint.roads@kingcounty.gov | [@kcroads](https://twitter.com/kcroads)

Road Challenges

- Aging infrastructure
- Frequently flooded roads
- Slide hazards
- Snow/ice removal
- Community concerns about neighborhood speeding
- Funding crisis



King County
Local Services

Contact us

24/7 Road Helpline - 206-477-8100 | 800-527-6237 | maint.roads@kingcounty.gov |  @kcroads

December 25 - January 9 Winter Weather Response



Road Crews plowing in Ravensdale



Road Crews plowing in Skykomish



Novelty Hill Road closed sign



Green Valley Road Slide 1/7/2022



Road Crews salting in Ravensdale



Tunnel to the Skykomish shop entrance 1/6/2022



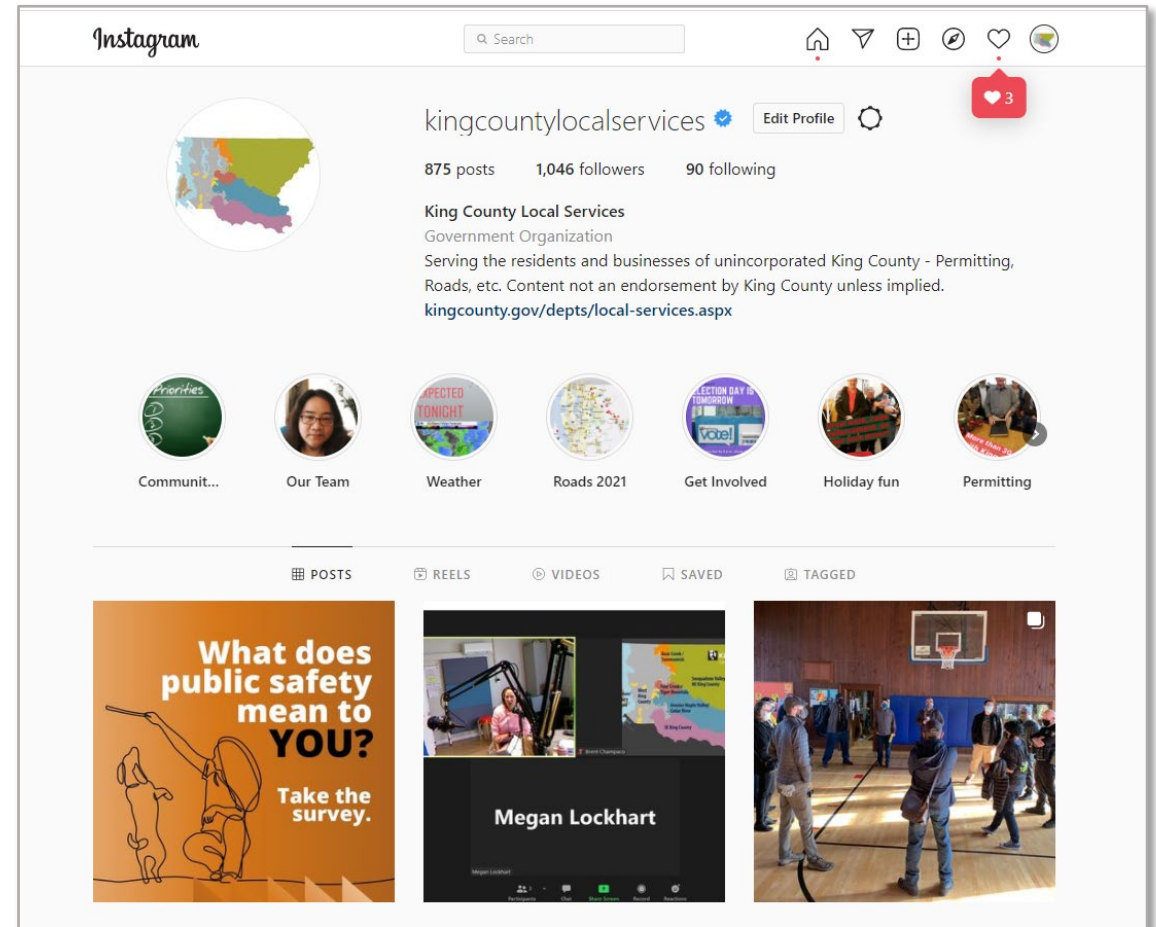
Vashon Hwy slide 1/7/2022



Burma Road, Vashon slide 1/7/2022

Find us on...

- Local Services website
<https://kingcounty.gov/local-services>
- Subscribe to the **Unincorporated Area Community News**
(on our home page)
- Instagram/Facebook
[@kingcountylocalservices](https://www.instagram.com/kingcountylocalservices)
- Twitter (Road Services) [@kcroads](https://twitter.com/kcroads)
- Facebook (Road Services) [@King County Roads](https://www.facebook.com/KingCountyRoads)
- NextDoor (County/Local Services) – by ZIP code/neighborhood
- **Road information**
Subscribe to email alerts – <https://kingcounty.gov/RoadAlert>
Check road conditions online – <https://kingcounty.gov/MyCommute>



REGIONAL PLANNING & GROWTH MANAGEMENT

*LOCAL SERVICES COMMITTEE
JANUARY 25, 2022*



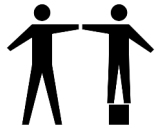
REGIONAL PLANNING TEAM

- Coordinate King County's Growth Management Act implementation
 - Regional growth planning bodies (PSRC, GMPC)
 - King County Comprehensive Plan
- Growth forecasting & demographics
- Annexations & Joint Planning with cities
- Coordinate planning with cities, special purpose districts (schools, water/sewer)
- Part of Executive Department (Office of Performance, Strategy, Budget)

2024 COMPREHENSIVE PLAN UPDATE



Statutory update, required every 8 years. Key drivers of 2024 scope include new Countywide Planning Policies and state guidance around Climate, Housing, Equity



Center social and health equity. Promote equitable development. Prioritize underserved and impacted communities, address disparate outcomes, repair harms

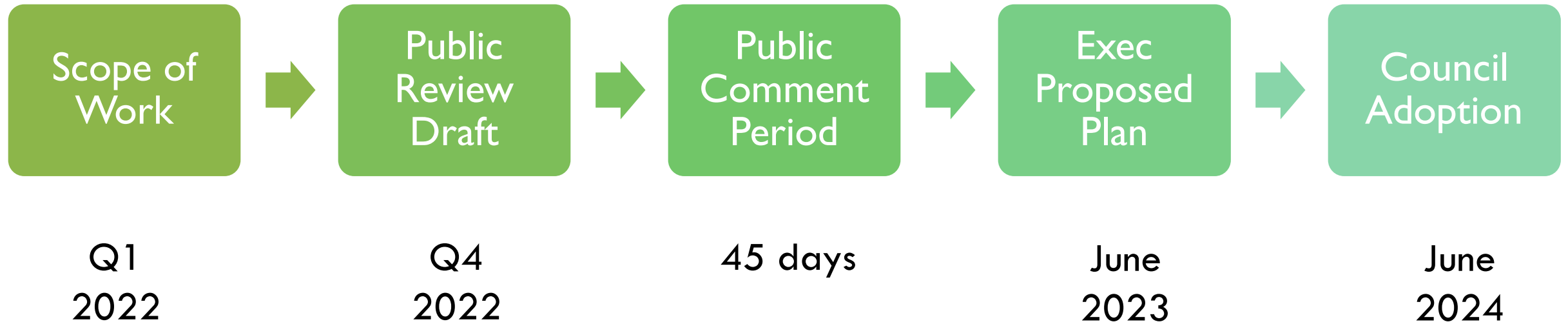


Update housing and job growth targets for unincorporated areas. Consider designating Skyway and North Highline business districts as Countywide Centers.



New policies and strategies provide clear, actionable direction and inform future subarea plans

2024 COMPREHENSIVE PLAN SCHEDULE / MILESTONES



DEPARTMENT OF NATURAL RESOURCES AND PARKS

CHRISTIE TRUE
DIRECTOR





DNRP SERVICES

- **Parks Division** manages 32,000+ acres of parks and natural lands, 175 miles of regional trails, 250 miles of backcountry trails, and a world-class aquatic center.
- **Solid Waste Division** promotes waste reduction and recycling programs and provides solid waste transfer and disposal services for all cities in King County except Seattle and Milton.
- **Water and Land Division** protects and restores watersheds, manages stormwater, houses three salmon recovery forums, reduces flood hazards, acquires open space, controls noxious weeds, and provides technical support for forestry and agriculture.
- **Wastewater Treatment Division** protects public health and water quality by providing wholesale wastewater treatment services to the region.

FUNDING SOURCES:

- Sewer rates and capacity charges
- Tipping fees
- Bond financing
- Parks Levy
- Real Estate Excise Tax
- Conservation Futures Tax
- Transfer of Development Rights
- Flood District



2022 PRIORITY LEGISLATION



Parks

- Update to King County Parks Open Space Plan
- Award of Parks Levy Grants

Solid Waste

- Rate proposal

Water and Land

- Scoping and development for the 2024 Comprehensive Plan Update (*in partnership with King County Office of Regional Planning*)*
- Updates to Open Space Taxation Incentive Programs

Wastewater Treatment

- Capacity Charge and Sewer Rate proposal





QUESTIONS?

King County

DCHS

Community & Human Services

Leo Flor, Department Director



5 Divisions + CESG

<https://kingcounty.gov/depts/community-human-services.aspx>

4 Major Initiatives

- [Best Starts for Kids](#)
- [Veterans, Seniors & Human Services Levy](#)
- [MIDD](#)
- [Health through Housing](#)

9* Advisory Boards

- [Behavioral Health Advisory Board](#)
- [Board for Developmental Disabilities](#)
- [Advisory Council on Aging & Disability](#)
- [Children & Youth Advisory Board](#)
- [MIDD Advisory Committee](#)
- [Women’s Advisory Board](#)
- [Veterans, Seniors & Human Services Levy Board](#)
- [Veterans Advisory Board](#)
- Health Through Housing Advisory Committee

ASD

Adult Services

- Veterans, Seniors & Human Services Levy
- Veterans Program
- Civil Legal Aid, Gender-Based Violence, Senior Centers

BHRD

Behavioral Health

- Medicaid-Funded Integrated Care Network
- Crisis Response Continuum & DCRs
- MIDD

CYYA

Children & Youth

- Best Starts for Kids
- YouthSource
- Learning Center North
- PSTAA
- Child Care

DDECS

Developmental Disabilities

- School to Work
- Early Support for Infants & Toddlers
- Pre-natal to Five BSK strategy

HHCD

Housing & Community Development

- Affordable Housing
- CDBG
- Health through Housing
- Home Repair
- Housing Policy

CESEG

COVID-19 Emergency Services Group

- Isolation & Quarantine
- Eviction Prevention & Rent Assistance

Emergency Management

Objectives

Provide for the effective direction, control, and coordination of County government emergency services functional units; provide liaison with other governments and the private, nongovernmental sector; and, serve as the coordinating entity for cities, County governmental departments, and other appropriate agencies, for incidents and events of regional significance.

Outcomes

- To provide region-wide planning and emergency response coordination for jurisdictional and private sector partners.
- To achieve a state of continuous improvement through the adoption of standards-based programs.
- To develop resilient and inclusive systems for King County departments and the whole community.
- To develop a strong workforce made up internal and external partners, ready to coordinate emergency response and recovery.



Key Initiatives

- Situational Awareness
- Emergency Operations Center
- Public Awareness
- Disaster Risk Reduction



Lines of Business

- Administration and Finance
 - Grant management
 - Public Assistance (FEMA)
- Preparedness
 - Emergency planning
 - Training and Exercises
 - Mitigation/Disaster Risk Reduction
 - Dam Safety
 - Local Emergency Planning Committee
- Operations
 - Emergency Operations Center
 - Alert and Warning
 - Duty Officers
- External Affairs
 - Advisory Committees (EMAC, EMCC)
 - Public Education and Outreach
 - Zone Liaisons
 - Regional Coordination Framework