

Proviso Response: Additional Court Space at the Norm Maleng Regional Justice Center

September 1, 2020



King County

I. Contents

I.	Contents	2
II.	Proviso Text.....	3
III.	Executive Summary	4
IV.	Background.....	5
	Department Overview.....	5
	Historical Context and Current Conditions	5
	Report Methodology.....	5
V.	III. Report requirements	5
	A. Court Space Description.....	5
	B. Caseload history	7
	C. Case balancing procedures.....	12
VI.	Conclusion	21
VII.	Appendices	21
	Table 1: Courtrooms and associated spaces.....	6
	Table 2: 2021-2020 overall square footage, by agency, excluding detention.....	6
	Table 3: Video or technology infrastructure and uses.....	7
	Table 4: KCCH Superior Court cases.....	8
	Table 5: MRJC Superior Court cases	9
	Table 6: Youth facility Superior Court cases	9
	Table 7: Harborview Superior Court cases.....	9
	Table 8: District Court responsibilities	10
	Table 9: All County-responsible District Court cases	11
	Table 10: Estimated KCCH District Court case assignments	11
	Table 11: Estimated MRJC District Court case assignments	12
	Table 12: Estimated Redmond Courthouse District Court case assignments.....	12
	Table 13: Estimated other location District Court case assignment.....	12
	Table 14: Superior Court location assignments	13
	Table 15: District Court case assignment information.....	16
	Figure 1: Map of Superior Court service area division.....	14
	Figure 2: Superior Court annual case totals, by location	20
	Figure 3: Superior Court adult criminal cases, by location	20

II. Proviso Text

P9 PROVIDED FURTHER THAT¹:

Of this appropriation, \$50,000 shall not be expended or encumbered until the executive transmits a report assessing the need for additional court related space at the Norm Maleng Regional Justice Center and a motion that should acknowledge receipt of the report and reference the subject matter, the proviso's ordinance, ordinance section and proviso number in both the title and body of the motion, and a motion acknowledging receipt of the report is passed by the council.

In collaboration with the superior court, district court, prosecuting attorney's office, department of public defense, department of judicial administration, department of adult and juvenile detention, and facilities management divisions, the office of performance, strategy and budget shall develop a needs assessment report that shall include, but not be limited to:

A. A description of the existing court spaces at the King County Courthouse, the Norm Maleng Regional Justice Center and the Patricia Clark Children and Family Justice Center (collectively referred to as "court facility locations"), to include: courtrooms; jury rooms; space for staff for all agencies using the facilities, excluding detention; storage; and video or technology infrastructure and uses;

B. Data showing district and superior court caseloads for each case-type and the court facility location where the cases were filed for 2014 through 2019;

C. A description of the district and superior court's existing procedures for case-balancing at each of its locations, particularly identifying how cases are allocated to courtrooms for hearings;

D. A discussion and evaluation of ways cases and judicial resources can be allocated among the three court facility locations to maximize efficiency in the use courthouse space, including possible remote video, hearings or other technology options; and

E. A recommendation for next steps, if any, to plan for future expansion of courtrooms and court related spaces.

The executive should file the report and a motion required by this proviso by September 1, 2020, in the form of a paper original and an electronic copy with the clerk of the council, who shall retain the original and provide an electronic copy to all councilmembers, the council chief of staff and the lead staff for the budget and fiscal management committee, or its successor.

¹ [Ordinance 19021, Section 3, Office of Performance Strategy and Budget, P9](#)

III. Executive Summary

This report is a response to a proviso in Ordinance 19021, Section 3, Office of Performance Strategy and Budget, Proviso P9. The proviso directs the King County Executive to transmit to the King County Council a report on report assessing the need for additional court related space at the Norm Maleng Regional Justice Center. This report fulfills the proviso requirements.

As required by the proviso, the report includes:

- A. A description of the existing court spaces at the King County Courthouse, the Norm Maleng Regional Justice Center and the Patricia Clark Children and Family Justice Center (collectively referred to as "court facility locations"), to include: courtrooms; jury rooms; space for staff for all agencies using the facilities, excluding detention; storage; and video or technology infrastructure and uses;
- B. Data showing district and superior court caseloads for each case-type and the court facility location where the cases were filed for 2014 through 2019;
- C. A description of the district and superior court's existing procedures for case-balancing at each of its locations, particularly identifying how cases are allocated to courtrooms for hearings;
- D. A discussion and evaluation of ways cases and judicial resources can be allocated among the three court facility locations to maximize efficiency in the use courthouse space, including possible remote video, hearings or other technology options; and
- E. A recommendation for next steps, if any, to plan for future expansion of courtrooms and court related spaces.

King County Courthouses: Superior Court and District Court conduct hearings at several court facility locations throughout King County. This report focuses primarily on the King County Courthouse, the Norm Maleng Regional Justice Center, and the Patricia Clark Children and Family Justice Center.

This report provides a description of courthouse spaces for the three court facility locations, historical information on case assignment by location, an explanation of current case allocation methodologies, and discussion of considerations for alternative allocation methodologies.

Report Methodology: The Office of Performance, Strategy and Budget produced this report with input and review from Superior Court, District Court, Prosecuting Attorney's Office, Department of Public Defense, Department of Judicial Administration, Department of Adult and Juvenile Detention, and Facilities Management Division.

Report Recommendations: While space is limited at the MRJC, expansion of the facility is not recommended at this time. The factors contributing to this recommendation include: rapid shifts in court operations related to the COVID-19 pandemic; anticipated increased use of video hearings; the potential for employing alternative methods to determine which location court proceeding will occur to meet court needs; evolving role of detention driven by understanding institutionalized racism; and,

Additional Court Space at the Norm Maleng Regional Justice Center

budget constraints caused by the COVID-19 pandemic. At this time, the Executive is prioritizing preservation of County services and King County jobs during the current economic crisis. A feasibility analysis for potential expansion of the MRJC could be undertaken in the future once the implications of legal system changes are more fully understood and when the county's financial situation improves.

IV. Background

Department Overview

The Office of Performance, Strategy and Budget (PSB) provides comprehensive planning, management, budgeting and performance assessment for King County government. PSB's work is guided by best practices in financial stewardship and performance management, which includes enhancing accountability, transparency, and integrating strategic planning, business planning, resource allocation, and continuous improvement into a systematic approach throughout the County.

Historical Context and Current Conditions

Courthouse Spaces: The King County Courthouse (KCCH) was built in 1916 and renovated in 1963. The Maleng Regional Justice Center (MRJC) was completed in 1997, and the Patricia Clark Children and Family Justice Center (CFJC) was completed in 2019. The MRJC includes both adult detention facilities and courtrooms, as does the CFJC.

At the time of report completion, the landscape of legal system operations in King County is rapidly changing. Changes are spurred by the COVID-19 pandemic as well as by the evolving role of detention driven by the county's growing understanding of equity and institutionalized racism. The King County General Fund, which funds the courts and the detention system, is under severe financial constraint.

Report Methodology

The Office of Performance, Strategy and Budget (PSB) produced this report with input and review from Superior Court, District Court, Prosecuting Attorney's Office (PAO), Department of Public Defense (DPD), Department of Judicial Administration (DJA), Department of Adult and Juvenile Detention (DAJD), and Facilities Management Division (FMD).

V. III. Report requirements

The sections below are organized to align with the proviso requirements.

A. Court Space Description

This section addresses the following section of the proviso: *A description of the existing court spaces at the King County Courthouse, the Norm Maleng Regional Justice Center and the Patricia Clark Children and Family Justice Center (collectively referred to as "court facility locations"), to include: courtrooms; jury rooms; space for staff for all agencies using the facilities, excluding detention; storage; and video or technology infrastructure and uses;*

The KCCH is located in downtown Seattle and has a total of 520,324 square feet rentable space. The facility was built in 1916 and renovated in 1963. It is a designated historic building. See appendix A for floorplan. The MRJC is located in Kent and has a total of 222,382 square feet rentable space, excluding

Additional Court Space at the Norm Maleng Regional Justice Center

detention. See appendix B for floorplan. It was completed in 1997. The CFJC has a total of 264,913 rentable square feet and was completed in 2019. See appendix C for floorplan.

Across the three facilities, District Court has a total of 10 courtrooms and Superior Court has a total of 72 courtrooms. The table below shows the number of courtrooms and associated spaces for each court.

Table 1: Courtrooms and associated spaces

Facility	District Court			Superior Court				
	Courtrooms	Jury Rooms	Judges' Chambers	Courtrooms	Jury Rooms	Jury Assembly & Staff	Judges' and Commissioners' chambers	Bailiff offices
KCCH	5	3	5	41	31	1	41	39
MRJC	5	5	6	21	16	1	21	17
CFJC	0	0	0	10	0	0	10	10

Source: Facilities Management Division

The court facility locations are used by a variety of agencies. The below table summarizes the rentable square footage for each location, by agency, from the Facilities Management Division's rate model.

Table 2: 2021-2020 overall square footage, by agency, excluding detention

	District Court	Superior Court	DJA	PAO	DPD	DAJD	KCSO	Other
KCCH	31,450	179,489	38,150	91,433	838	40,307	38,105	53,294
MRJC	26,361	112,602	17,564	22,131	1,632	18,253	1,201	609
CFJC	0	66,539	5,622	8,307	1,596	detention only	8,307	14,178

Source: Facilities Management Division 2021-2022 Proforma Rate Model

Video and technology improvements are currently underway at court facility locations and remote hearing capabilities will be substantially increased by the end of 2020.

Table 3: Video or technology infrastructure and uses

	District Court	Superior Court
KCCH	All courtrooms currently have video and digital hearing capabilities.	All courtrooms will have video and digital hearing capabilities by the end of 2020. Installation is currently in progress.
MRJC	All courtrooms currently have video and digital hearing capabilities.	All courtrooms will have video and digital hearing capabilities by the end of 2020. Installation is currently in progress.
CFJC	No courtrooms	All courtrooms will have video and digital hearing capabilities by the end of 2020. Installation is currently in progress.

Source: Superior Court and District Court

B. Caseload history

This section addresses the following section of the proviso: *Data showing district and superior court caseloads for each case-type and the court facility location where the cases were filed for 2014 through 2019.*

Superior Court

King County Superior Court is King County’s general jurisdiction trial court. Under the Washington Constitution and state statute, Superior Court has responsibility for felony criminal cases, civil matters, family law, probate and guardianship matters, juvenile cases, and mental illness and involuntary commitment matters. Superior Court manages or participates in three therapeutic court programs funded by the Mental Illness Drug Dependency (MIDD) revenue: Family Treatment Court, King County Adult Drug Diversion Court, and Juvenile Drug Court.

King County Superior Court Case Filings: 2014- 2019 by Location

Juvenile Dependency, Termination, and At-Risk Youth (ARY) cases moved to KCCH in March of 2015. For simplicity, the table shows cases beginning in 2015 in KCCH.

Involuntary Treatment Act (ITA) cases are primarily heard at Harborview. In 2019 approximately 5% of ITA hearings are conducted via video from MRJC and 8% of hearings were conducted via video from KCCH.

Table 4: KCCH Superior Court cases

	2014	2015	2016	2017	2018	2019
Criminal (excl. RALJ ²)	3,326	3,412	3,700	3,544	3,472	4,017
Criminal RALJ	160	164	104	123	103	129
Civil (incl. Small Claim, excl. RALJ)	11,999	11,870	11,922	12,064	12,092	11,613
Domestic	4,919	4,506	4,534	4,505	4,588	4,240
Probate	4,517	4,612	4,604	4,862	4,796	4,888
Guardianship	572	583	619	592	585	450
Adoption	361	325	335	402	336	323
Paternity	328	312	239	239	228	236
Civil RALJ	42	51	56	48	59	71
Civil Matters Filed With Clerk	7,233	6,666	6,061	6,841	5,052	5,557
Juvenile Dependency		333	449	508	523	507
Juvenile Termination		122	142	185	216	142
Juvenile At Risk Youth/Child In Need of Services/Other		90	124	118	139	97
Total	33,457	33,046	32,889	34,031	32,189	32,173

Source: DJA and Superior Court

² Rules for Appeal of Decisions of Courts of Limited Jurisdiction

Table 5: MRJC Superior Court cases

	2014	2015	2016	2017	2018	2019
Criminal (excl. RALJ)	2,887	2,825	2,932	2,897	2,517	2,590
Criminal RALJ	12	16	7	13	14	17
Civil (incl. Small Claim, excl. RALJ)	9,419	9,347	9,300	9,453	10,125	9,589
Domestic	3,002	3,053	2,978	3,092	3,052	3,040
Probate	1,403	1,410	1,469	1,556	1,586	1,916
Guardianship	356	386	389	357	392	256
Adoption	109	135	123	144	109	160
Paternity	374	338	289	300	284	290
Civil RALJ	5	6	10	17	9	10
Civil Matters Filed With Clerk	5,007	2,915	2,681	4,062	3,984	4,473
Juvenile Dependency	512	515	278	285	264	304
Juvenile Termination	119	92	77	119	128	83
Juvenile At Risk Youth/Child In Need of Services/Other	146	127	123	127	154	109
Juvenile Truancy	585	718	672	801	976	946
Total	23,936	21,883	21,328	23,223	23,594	23,783

Source: DJA and Superior Court

Table 6: Youth facility Superior Court cases

	2014	2015	2016	2017	2018	2019
Juvenile Dependency	428					
Juvenile Termination	202					
Juvenile At Risk Youth/Child In Need of Services/Other	139					
Juvenile Truancy	648	651	550	746	949	760
Juvenile Offender	1,802	1,649	1,295	1,324	1,229	1,121
Total	3,219	2,300	1,845	2,070	2,178	1,881

Source: DJA and Superior Court

Table 7: Harborview Superior Court cases

	2014	2015	2016	2017	2018	2019
ITA	3,852	4,004	4,152	4,694	4,910	4,985

Source: DJA and Superior Court

Additional Court Space at the Norm Maleng Regional Justice Center

District Court:

The King County District Court is the County’s court of limited jurisdiction. It adjudicates all misdemeanor cases for unincorporated King County, cases filed by Washington State Patrol and other state law enforcement agencies, and cases from the 12 jurisdictions³ that contract with District Court for municipal court services. Among other responsibilities, District Court handles civil matters, small claims, anti-harassment orders, and traffic infractions. District Court manages the Regional Mental Health Court (RMHC) and Regional Veterans Court (RVC), therapeutic courts for eligible defendants with mental illnesses. Therapeutic courts are funded by MIDD revenue.

The table below outlines which matters District Court is responsible for and which services the County provides through contracts with cities.

Table 8: District Court responsibilities

County-responsible	Contract city
Misdemeanant cases and infractions for unincorporated King County, cases filed by Washington State Patrol and other state law enforcement agencies. For all of King County: <ul style="list-style-type: none">• Civil matters• Small claims• Anti-harassment Orders• Regional Mental Health Court, Regional Veterans Court	Misdemeanant cases and infractions for each city

District Court operates at the KCCH, the MRJC, and at courthouse locations in the cities of Auburn, Bellevue, Burien, Issaquah, Redmond, Shoreline, and on Vashon Island.

The State Administrative Office of the Court provides filing numbers from District Court’s case management system. The current system does not track filings by courthouse location, but it will be available when District Court’s new case management system is fully implemented in 2021. See section C for filing location assignment information.

Courthouse location information below is estimated through the following methodologies and includes only county-responsible cases:

- **Criminal:** King County criminal cases are heard at KCCH, MRJC, and the Redmond and Vashon Island Courthouses. King County PAO tracks County-responsible filings based on courthouse location, however some filings are missing from their case management system and data is only available for 2016 and later. Estimated number of filing reported below assumes cases missing

³ Auburn, Beaux Arts, Bellevue, Burien, Carnation, Covington, Duvall, Kenmore, Redmond, Sammamish, Shoreline and Skykomish.

Additional Court Space at the Norm Maleng Regional Justice Center

from the PAO data are assigned proportionately based on the location of cases that are tracked. Estimates do not include contract city cases. City criminal cases are heard in the Bellevue, Redmond, Issaquah, Burien, Shoreline, and Auburn courthouses.

- **Infractions:** County-responsible infractions are handled at the MRJC, and at the Shoreline and Issaquah Courthouses. Numerical counts of infractions by specific location in not available. Contract City infractions are assigned to the designated city courthouse location and are not included below.
- **Small Claims:** Data on hearing location is available. Not all cases have hearings; number of filings reported assumes cases are assigned proportionately based on the location of cases that have hearings.
- **Protection Orders:** Data on hearing location is available. Not all cases have hearings; number of filings reported assumes cases are assigned proportionately based on the location of cases that have hearings.
- **Civil:** Hearing location is only available for Civil Domestic Violence Cases, so estimated civil caseloads by location is not available.

Table 9: All County-responsible District Court cases

	2014	2015	2016	2017	2018	2019
Criminal (including Expedited)	9,006	6,664	5,983	4,787	5,319	7,247
Protection Anti Harassment/Orders	2,537	2,596	2,451	2,652	2,684	2,569
Civil	30,385	26,829	20,856	16,947	20,157	22,149
Small Claims	4,300	5,456	4,419	3,248	3,205	3,163
Probable Cause Filings	9,814	9,910	10,679	12,137	12,344	11,295
Infractions (including parking)	80,400	92,438	84,421	84,366	95,818	81,430
Total	136,442	143,893	128,809	124,137	139,527	127,853

See methodology above; data from District Court and PAO.

Table 10: Estimated KCCH District Court case assignments

	2014	2015	2016	2017	2018	2019
Criminal	unavailable	unavailable	3,003	2,400	1,739	2,146
Small Claims	1,408	1,660	1,406	1,065	1,072	1,084
Protection Anti Harassment/Orders	963	939	912	1,134	1,089	968
Total	unavailable	unavailable	2,318	2,199	2,161	2,052

See methodology above; data from District Court and PAO.

Table 11: Estimated MRJC District Court case assignments

	2014	2015	2016	2017	2018	2019
Criminal	unavailable	unavailable	2,115	1,571	2,157	2,951
Small Claims	-	-	-	1	623	781
Protection Anti Harassment/Orders	342	557	694	725	773	758
Total	unavailable	unavailable	2,809	2,297	3,553	4,490

See methodology above; data from District Court and PAO.

Table 12: Estimated Redmond Courthouse District Court case assignments

	2014	2015	2016	2017	2018	2019
Criminal	unavailable	unavailable	860	810	1,410	2,119
Small Claims	-	-	-	-	-	-
Protection Anti Harassment/Orders	220	244	199	145	142	161
Total	unavailable	unavailable	1059	955	1552	2280

See methodology above; data from District Court and PAO.

Table 13: Estimated other location District Court case assignment

	2014	2015	2016	2017	2018	2019
Criminal	unavailable	unavailable	6	6	13	30
Small Claims	2,892	3,796	3,013	2,183	1,510	1,298
Protection Anti Harassment/Orders	1,012	856	646	648	679	682
Total	unavailable	unavailable	3,665	2,837	2,202	2,010

See methodology above; data from District Court and PAO.

C. Case balancing procedures

This section addresses the following section of the proviso: *A description of the district and superior court's existing procedures for case-balancing at each of its locations, particularly identifying how cases are allocated to courtrooms for hearings;*

Superior Court

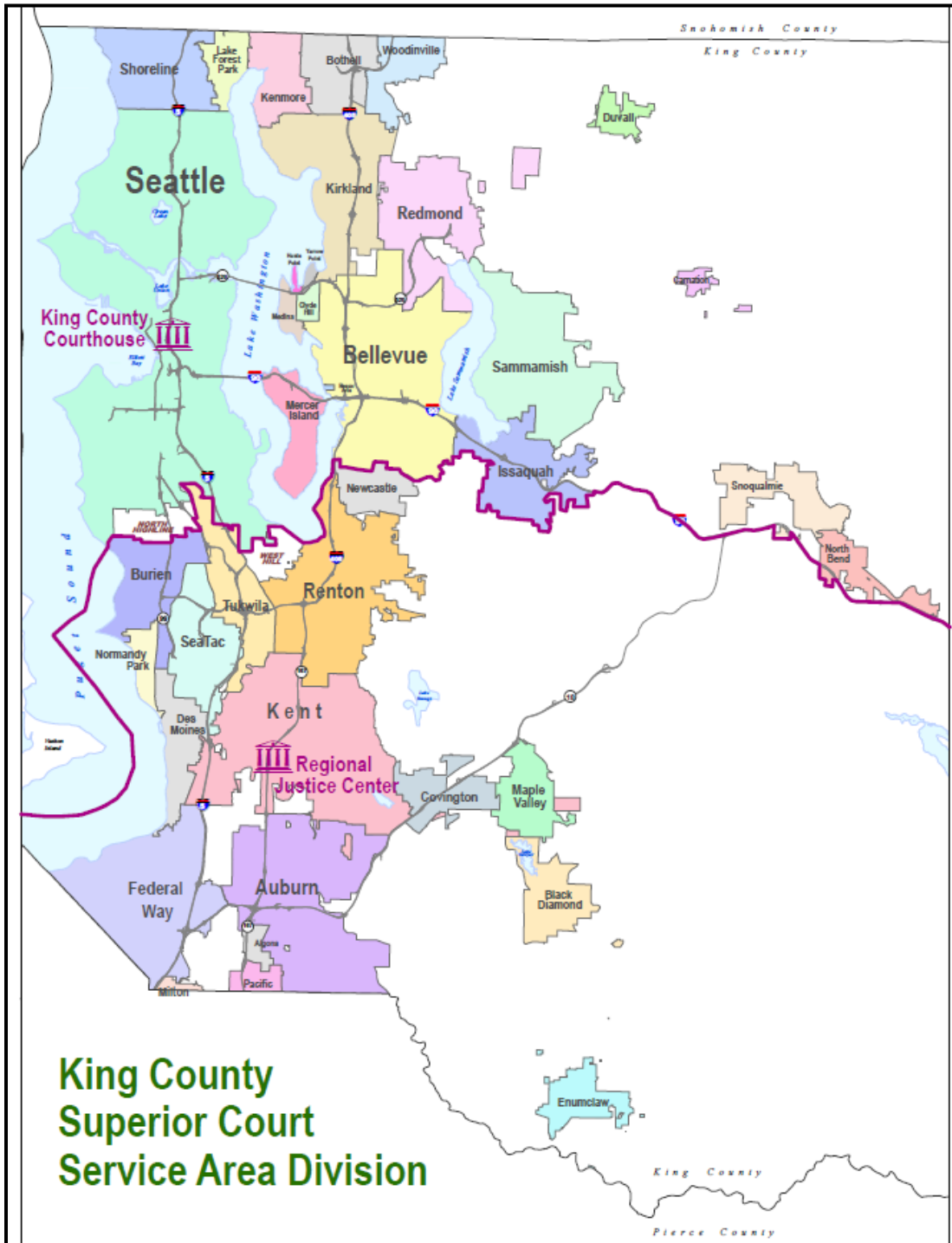
[LCR 82. Case Assignment Area](#) and [LJuCR 3.2 Who May File Petition](#) – Venue outline Superior Court’s process for allocating cases. Cases are allocated as follows:

Table 14: Superior Court location assignments

Courthouse	Location
KCCH	All of King County north of Interstate 90 and including all of the Interstate 90 right-of-way; all of the cities of Seattle, Mercer Island, Bellevue, Issaquah and North Bend; the unincorporated areas of King County Sheriff's Precinct 4; and including all of Vashon and Maury Islands.
MRJC	All of King County south of Interstate 90 except those areas included in the Seattle Case Assignment Area.

Criminal cases are allocated based on the location where the alleged crime occurred. Civil cases are filed either as Seattle or MRJC cases based upon the location of the involved litigants and attorneys. Once filed, most civil cases are assigned to a specific judge who is located at the respective Seattle or MRJC courthouse.

Figure 1: Map of Superior Court service area division



Additional Court Space at the Norm Maleng Regional Justice Center

District Court

[GAO 05 108](#) outlines the court's process for assigning criminal cases and infractions by court location. The Court's [website](#) describes assignment of civil and small claims cases. Contract city cases are handled at the city's designated courthouse. The location assignment process was adopted in consultation with law enforcement to consolidate location filings to have a more consistent distribution of cases and to reduce overtime for law enforcement by having their cases heard primarily in one location instead of in multiple locations throughout the County.

The table on the following page summarizes case assignment information

Table 15: District Court case assignment information

Courthouse	Filing Agencies - Criminal	Filing Agencies - Infractions	Other	Civil and Small Claims
King County Courthouse	<p>Washington State Patrol Detachments 1, 2, 3, 4, 5, 9, 10, 13, 20, 21, 65, PIO</p> <p>King County Sheriff Precinct 5, SO/Metro/SCU, ACAD, CID, Civil, KCC, PMU, Range Unit, SO/SAR-TOW</p> <p>Burlington Northern Police Dep.; Union Pacific Railroad Police Dept.; Washington State Dept. of Liquor Control; Washington State Dept. of Parts and Recreation; University of Washington Police</p>		<p>Passport applications (from anywhere)</p> <p>Regional Mental Health Court, Veterans Court</p> <p>Probation (serving Seattle, the Regional Mental Health Court, and Veterans Court)</p>	Small claims mediations were scheduled in Issaquah, Seattle, and the MRJC pre COVID. The other civil work (collections, personal injury, other tort lawsuits) and civil bench and jury trials are heard in Issaquah, Burien, and Seattle and are filed based upon where the defendant resides.
MRJC		<p>Washington State Patrol Detachments 6, 7, 8, 15, 17;</p> <p>King County Sheriff Precinct 3, Precinct 4, RJC, SAU, SO MC/MCStep, SO DOT, SO DUI, SO TTU Forest, SO/ARFF, SO/BDU, SO/K9;</p> <p>Port of Seattle Police;</p> <p>Washington State Dept. of Fish and Wildlife</p>	<p>Domestic Violence Court, in custody matters, and ticket payments are handled here.</p> <p>Probation (serving MRJC, DV Court and Burien)</p>	

Burien	<p>Washington State Patrol Detachments 6,7, 17;</p> <p>King County Sheriff Precinct 3, Precinct 4, RJC, SAU, SO MC/MC Step, SO DOT, SO DUI, SO TTU Forest, SO/ARFF, SO/BDU, SO/K9;</p> <p>Port of Seattle Police;</p> <p>Washington State Dept. of Fish and Wildlife</p>		<p>Passport applications (from anywhere)</p> <p>Community Court serves some criminal cases</p>	
Redmond	<p>Washington State Patrol Detachments 8, 12, 14, 15, 16, 18, 19;</p> <p>King County Sheriff Precinct 2, SO Marine, Marine</p>		<p>Community Court serves some criminal cases</p>	

Shoreline		<p>Washington State Patrol Detachments 1, 2, 3, 4, 5, 9, 10, 13, 14, 16, 20, 21, 65, PIO;</p> <p>King County Sheriff Precinct 5, SO/Metro/SCU, ACAD, CID, Civil, KCC, PMU, Range Unit, SO?SAR-TOW;</p> <p>Burlington Northern Police Dept.; Union Pacific Railroad Police; Washington State Dept. of Liquor Control; Washington State Dept. of Parks and Recreation; University of Washington Police;</p>	<p>Passport applications (from anywhere)</p> <p>Community Court serves some criminal cases</p> <p>Probation (serving Shoreline and Seattle)</p>	
Issaquah		<p>Washington State Patrol Detachments 12, 18,19;</p> <p>King County Sherriff Precinct 2, SO Marine, Marine</p>	<p>Passport applications (from anywhere)</p>	
Auburn			<p>Probation (serving Auburn)</p>	
Bellevue			<p>Passport applications (from anywhere)</p>	

Anti- Harassment, Domestic Violence, and Name Changes can be filed at any court location.

Source: District Court

Additional Court Space at the Norm Maleng Regional Justice Center

D. Discussion and evaluation of allocation methods

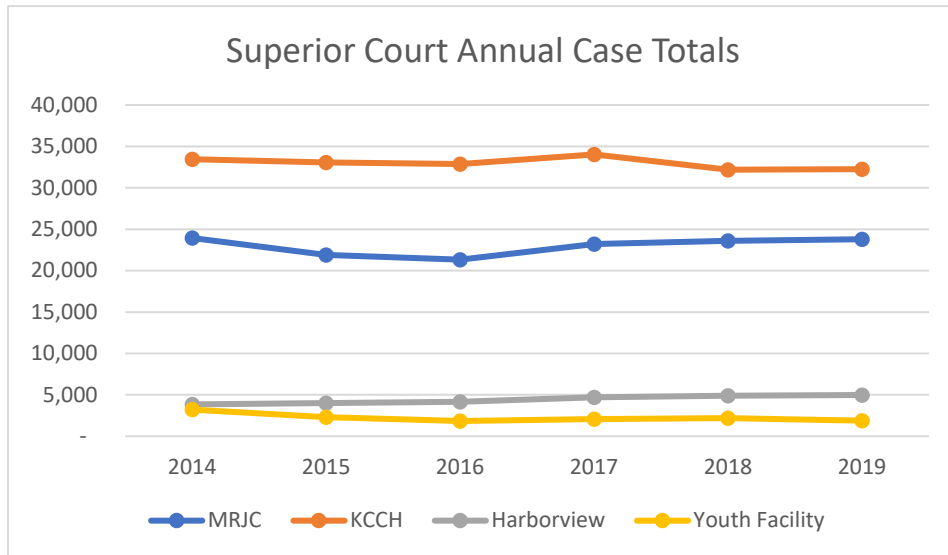
This section addresses the following section of the proviso: *A discussion and evaluation of ways cases and judicial resources can be allocated among the three court facility locations to maximize efficiency in the use courthouse space, including possible remote video, hearings or other technology options;*

The context and considerations for balancing cases and judicial resources should take into account the following factors:

- **Social distancing and operational changes due to the COVID-19 pandemic.** The COVID-19 pandemic requires reorganization of court operations to enable meeting of for social distancing health guidelines. Changes, which began in March 2020, include modifications to case assignment methodology. It is unclear whether such changes will be permanent and what further changes will be needed as the pandemic continues.
- **Expected budget reductions in 2021 and 2022.** All criminal justice system agencies are expected to substantially reduce budgets in 2021 and 2022. These reductions may require operational changes that affect caseload allocation.
- **Expected increase in the use of video court.** The Criminal Justice Incentive Reserve funded a project to expand video court to be implemented in 2020. As a result of the COVID-19 pandemic, this project was accelerated and additional federal funding was allocated to equip all Superior Court courtrooms with video. A proposal for District Court expansion of video in response to the pandemic has been included in the August COVID supplemental appropriations ordinance transmitted to the Council August 13.
Remote hearings do not require participants to be physically present in the courtroom. While criminal defendants retain the option of appearing in court in person, expanded video court could make case assignment location less of a factor for those choosing to participate in their hearings via video. Video court also has potential to reduce the frequency of failing to appear for court dates, which could reduce bench warrants and failure to appear charges.
- **Move of Dependency Cases.** Dependency cases moved out of the KCCH and into the CFJC in August 2020. This move frees up two courtrooms and associated space in the KCCH. Note though as of August 2020, the extra courtroom space was used to enable social distancing.
- **Population changes.** Case allocation methodology should consider population trends and projections. Areas of the county that are growing rapidly may need additional services.
- **Transportation.** Changes to allocation methodology should consider travel times and costs and prioritize accessibility for low income communities. Access to court services should be equitable and provide access for low income people who may lack access to private transportation and be unable to afford parking in downtown Seattle.
- **Impact on other legal system partners.** Any changes in the allocation methodology should consider impacts on the broader King County legal system partners DJA, PAO, DPD, and DAJD.
- **Overall case volume vs. courtroom utilization.** While overall case numbers have been relatively stable between 2014 and 2019 (see chart below), overall case volume is not an adequate indicator of space utilization, as different case types and different cases have different space

utilization requirements. For example, some case types typically require multiple hearings, while others do not.

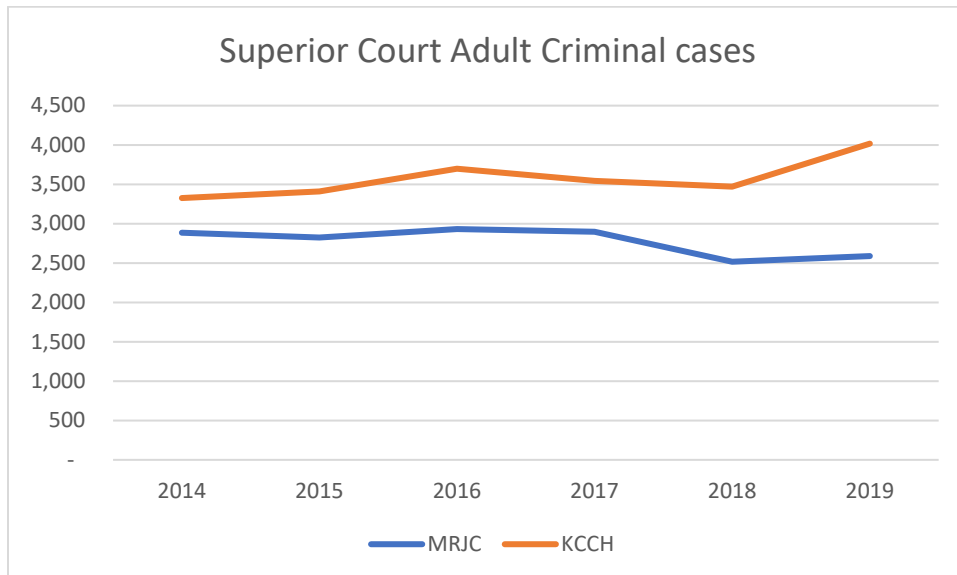
Figure 2: Superior Court annual case totals, by location



Source: DJA and Superior Court

- Criminal case volume.** Felony criminal cases increased substantially from 2018 to 2019 at the King County Courthouse (see chart below).

Figure 3: Superior Court adult criminal cases, by location



Source: DJA and Superior Court

Additional Court Space at the Norm Maleng Regional Justice Center

Initial options for adjusting the case allocation methodology are outlined below. Please note that this report does not provide analyses of options due the factors noted in the context section on page 5.

Options for adjusting the current allocation methodology include:

- **Change catchment area for Superior Court cases.** Additional cities could be added to the KCCH catchment area to reduce MRJC caseloads.
- **Increase use of video court permanently.** Cases that can be heard entirely via video could be assigned without geographic consideration. Increased use of video for other cases reduces the importance of location.
- **Add off-hours court.** Courtrooms could be utilized for more cases if court operations extended beyond the current schedule. This option would present staffing and security challenges.
- **Reduce/combine calendars.** Cases that are heard on calendars use a block of time regardless of how many cases appear. Courts could consider whether calendars could be combined.
- **Identify opportunities for facility expansion.** This option is likely prohibitively expensive and should be considered only if other options fail to address capacity constraints.

VI. Conclusion

This section addresses the following section of the proviso: *A recommendation for next steps, if any, to plan for future expansion of courtrooms and court related spaces.*

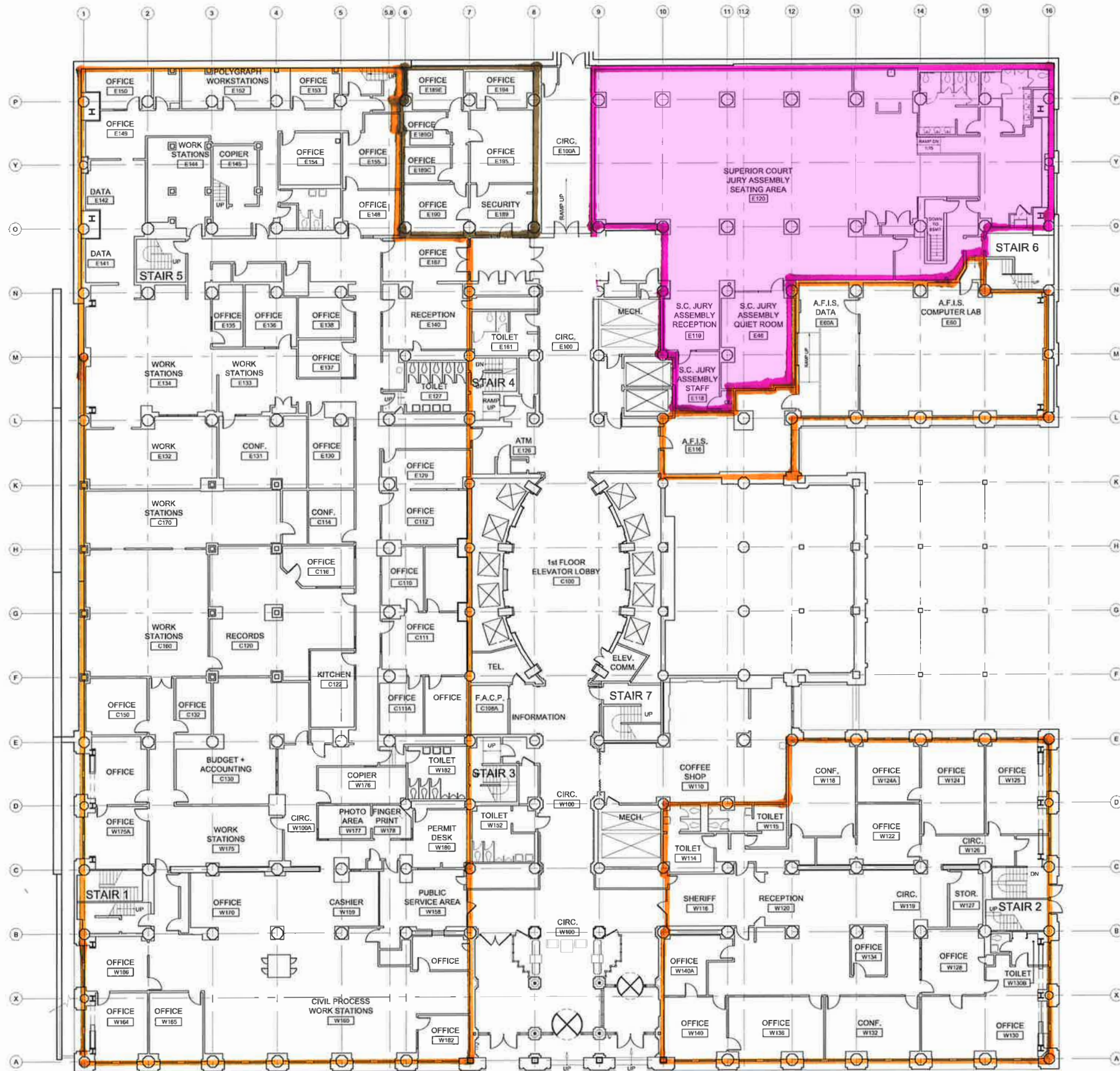
Given budget constraints, recent changes in court operations due to COVID-19, and uncertainty regarding long-term impacts of the COVID-19 pandemic on court operations, expansion of courtrooms and court related spaces is not recommended at this time. The Office of Performance, Strategy and Budget will monitor the implementation of video court and other system reforms planned in 2021-2022 and will reassess MRJC space constraints in partnership with the county's legal system partners when conditions stabilize.

VII. Appendices

Appendix A. King County Courthouse Floorplan

Appendix B. Maleng Regional Justice Center Floorplan

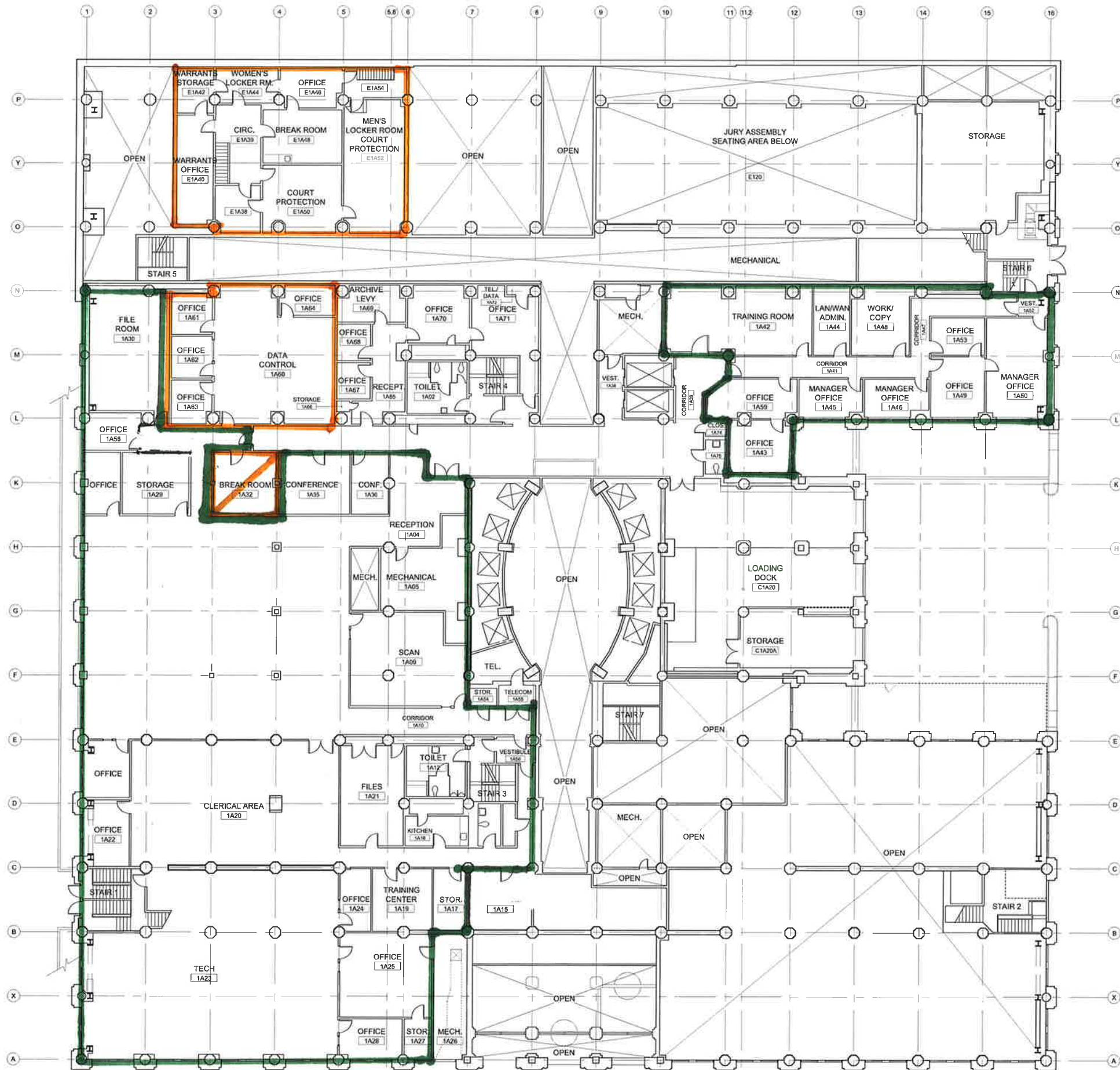
Appendix C. Children and Family Justice Center Floorplan



FIRST FLOOR PLAN
SCALE: 1/16" = 1'-0"



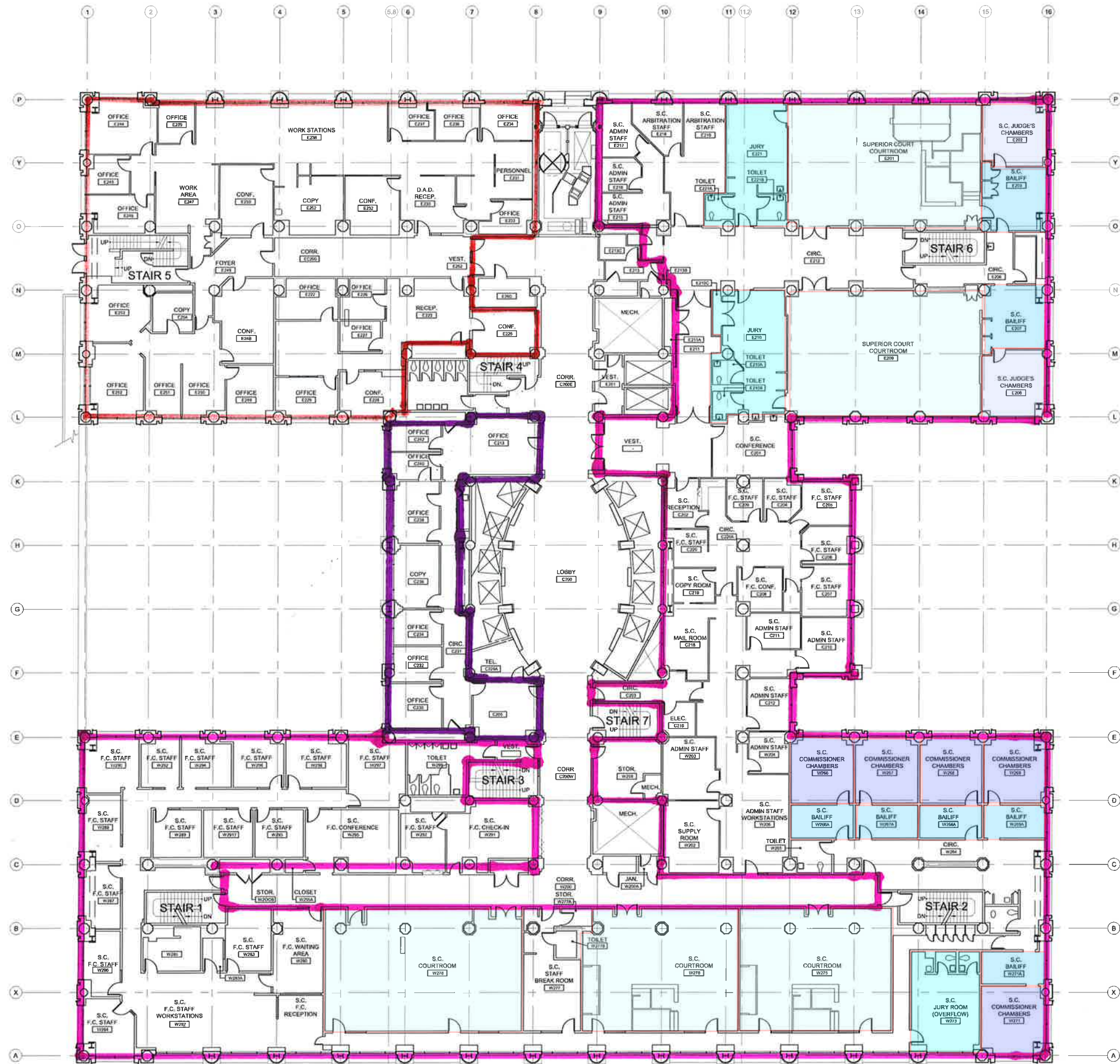
FILE # 1/26-A-PP-01.dwg REVISION	DATE 4.5.07 DRAWN DT CHECKED
	PROJ #
FIRST FLOOR PLAN	
KING COUNTY COURTHOUSE 516 THIRD AVENUE SEATTLE, WASHINGTON 98104	
Department of Executive Services Facilities Management Division Capital Planning and Development King County Administration Building 320 Third Avenue, Suite 320 Seattle, Washington 98104 Telephone (206) 296-1822 Fax (206) 296-0186	
1 OF	



LEVEL 1A FLOOR PLAN
SCALE: 1/16" = 1'-0"



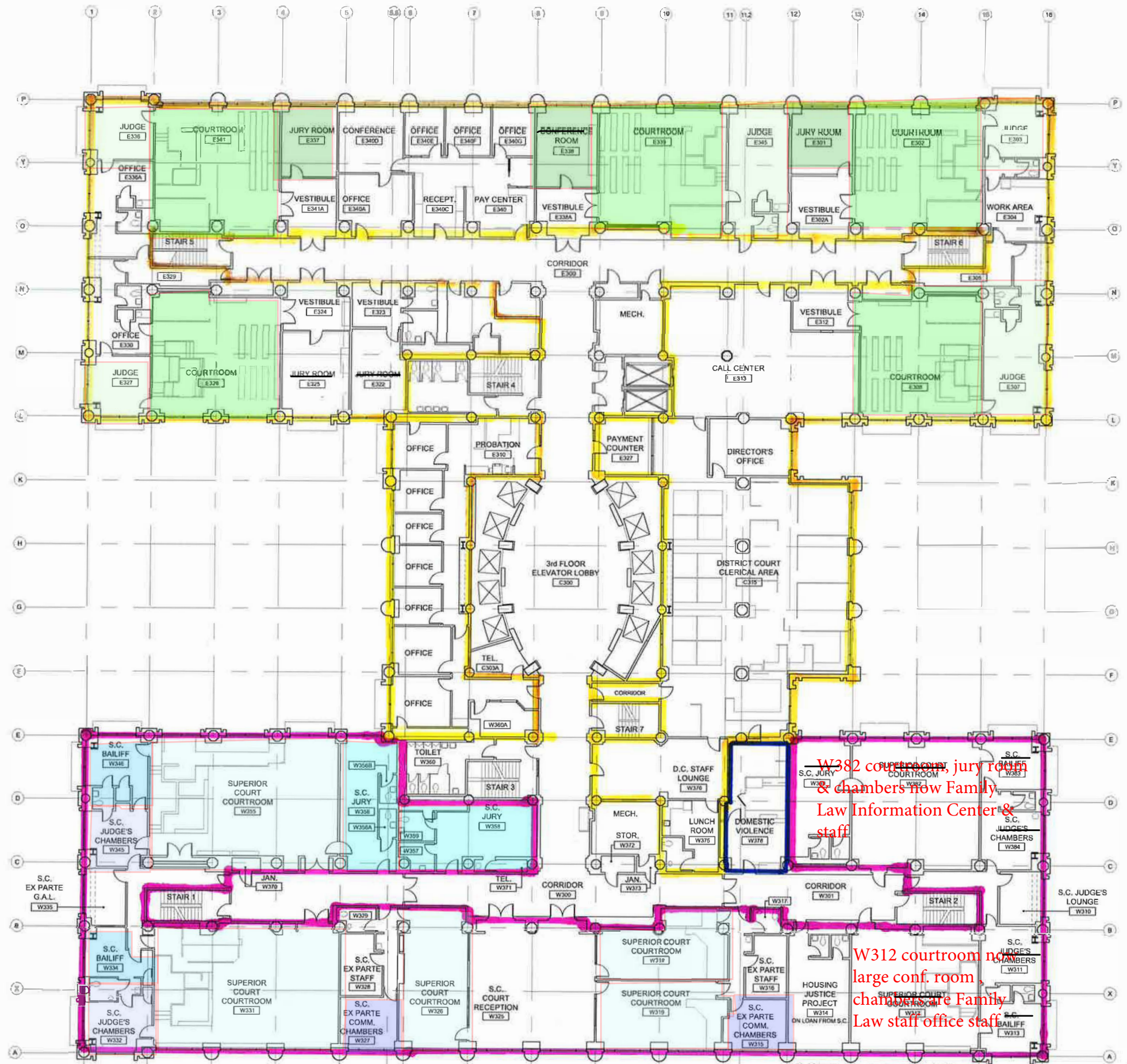
LEVEL 1A FLOOR PLAN	FILE # 026-A-FP-01A.dwg REVISION
	DATE 4.5.07 DRAWN DT CHECKED
	PROJECT #
	KING COUNTY COURTHOUSE 516 THIRD AVENUE SEATTLE, WASHINGTON 98104
Department of Executive Services Facilities Management Division Capital Planning and Development King County Administration Building 500 Fourth Avenue, Room 320 Seattle, Washington 98104 Telephone (206) 296-1822 Fax (206) 296-0186	King County
1A	OF



SECOND FLOOR PLAN
SCALE: 1/16" = 1'-0"



Department of Executive Services Facilities Management Division Capital Planning and Development King County Administration Building 320 5th Avenue, Suite 320 Seattle, Washington 98104 Telephone (206) 296-1822 Fax (206) 296-0186	SECOND FLOOR PLAN		PROJ # DATE 4.5.07 DRAWN DT CHECKED
	KING COUNTY COURTHOUSE 516 THIRD AVENUE SEATTLE, WASHINGTON 98104		FILE # 026-A-PP-02.dwg REVISION
 King County	2 OF		



THIRD FLOOR PLAN
SCALE: 1/16" = 1'-0"

W382 courtroom, jury room
& chambers now Family
Law Information Center &
staff

W312 courtroom now
large conf. room,
chambers are Family
Law staff office staff

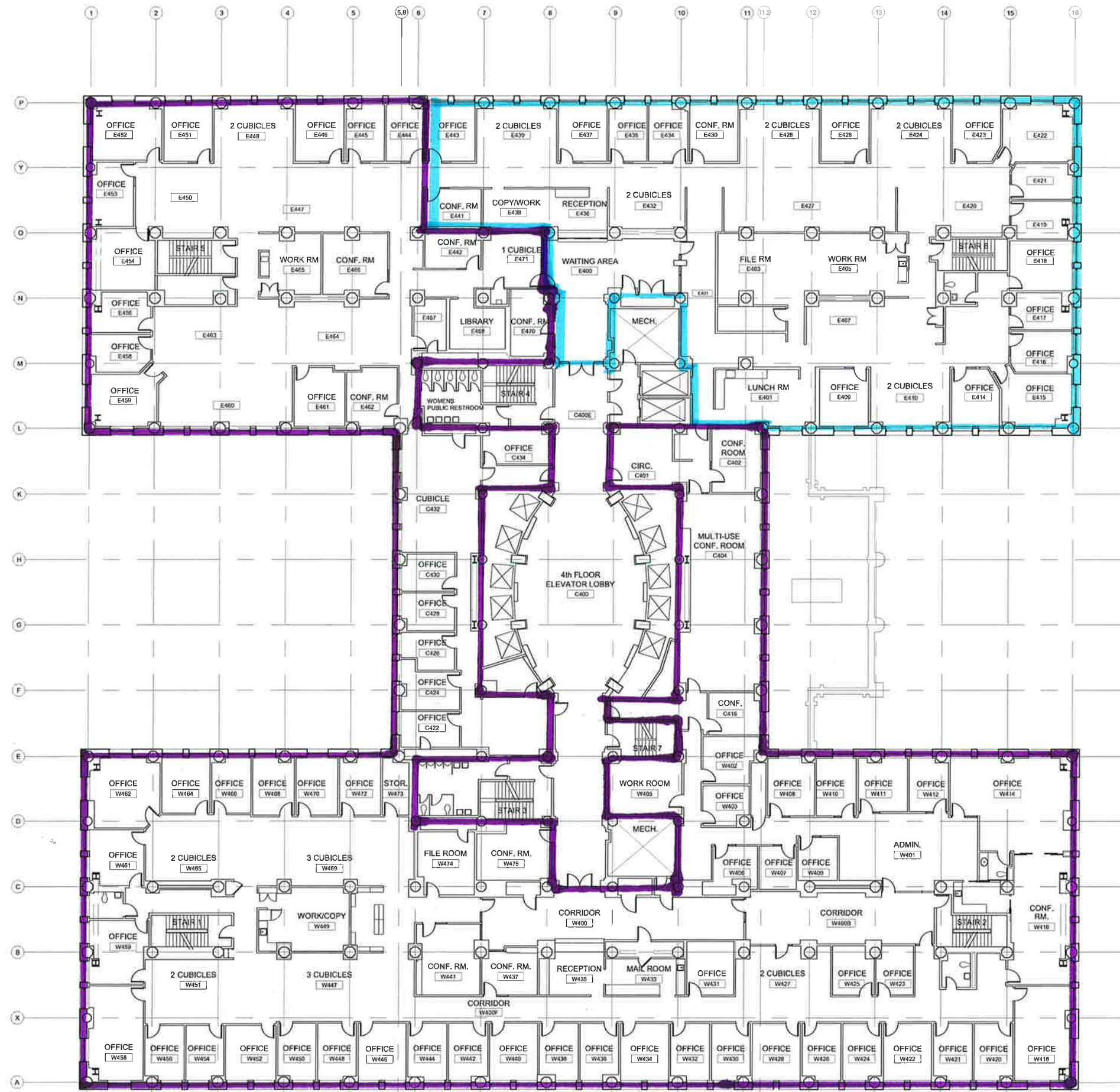
FILE #	APP-03.dwg
PROJ #	395736
DATE	4.5.07
DRAWN	DT
CHECKED	

THIRD FLOOR PLAN

KING COUNTY COURTHOUSE
516 THIRD AVENUE
SEATTLE, WASHINGTON 98104

Department of Executive Services
Facilities Management Division
Capital Planning and Development
King County Administration Building
500 Fourth Avenue, Room 320
Seattle, Washington 98104
Telephone (206) 296-1822 | Fax (206) 296-0186

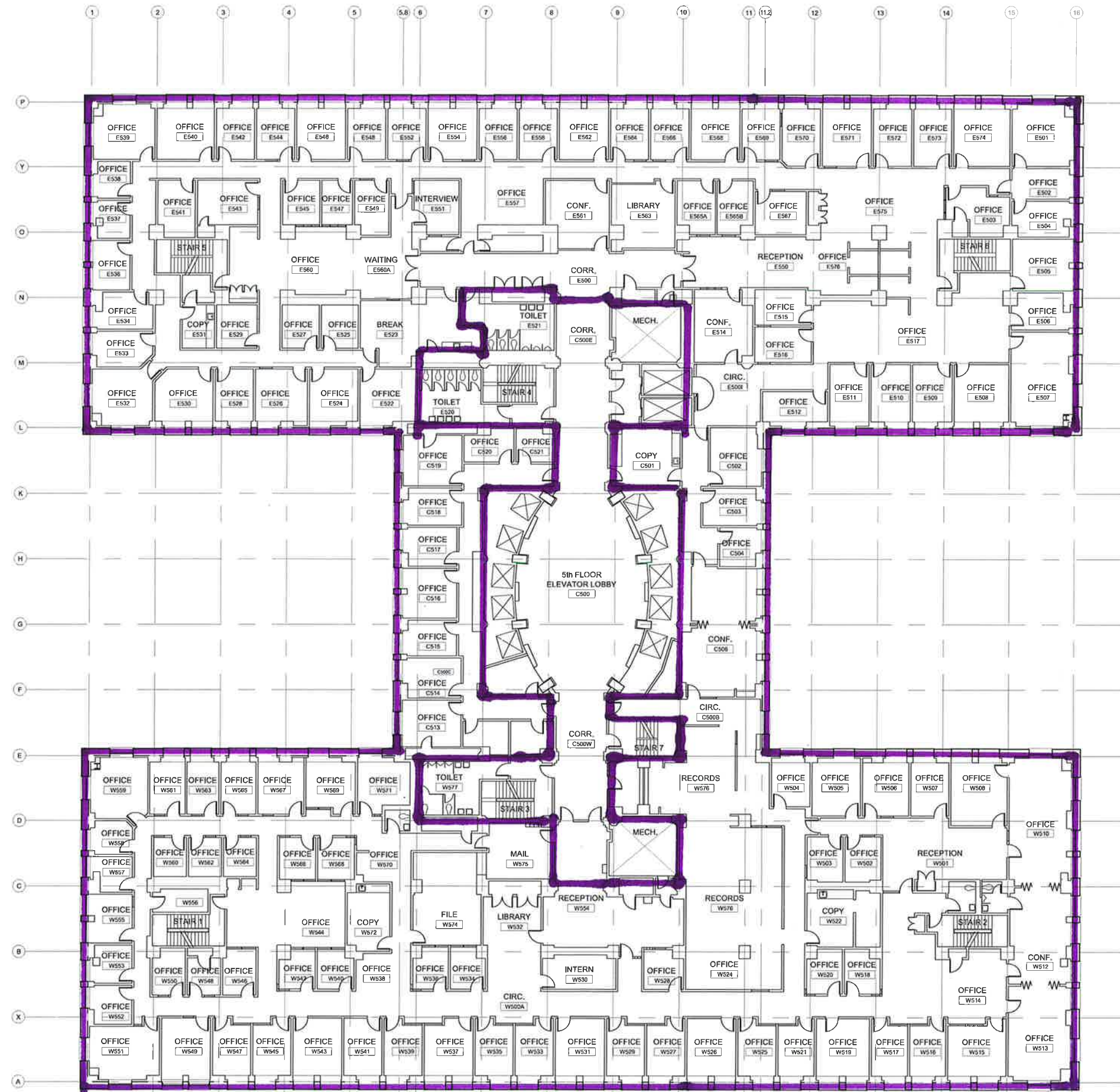




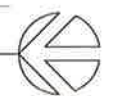
FOURTH FLOOR PLAN
SCALE: 1/16" = 1'-0"



Department of Executive Services Facilities Management Division Capital Planning and Development King County Administration Building 500 Fourth Avenue, Room 320 Seattle, Washington 98104 Telephone (206) 296-1822 Fax (206) 296-0186	FOURTH FLOOR PLAN	
	KING COUNTY COURTHOUSE 516 THIRD AVENUE SEATTLE, WASHINGTON 98104	PROJECT # DATE 4.5.07 DRAWN DT CHECKED
	4 OF	



FIFTH FLOOR PLAN
SCALE: 1/16" = 1'-0"

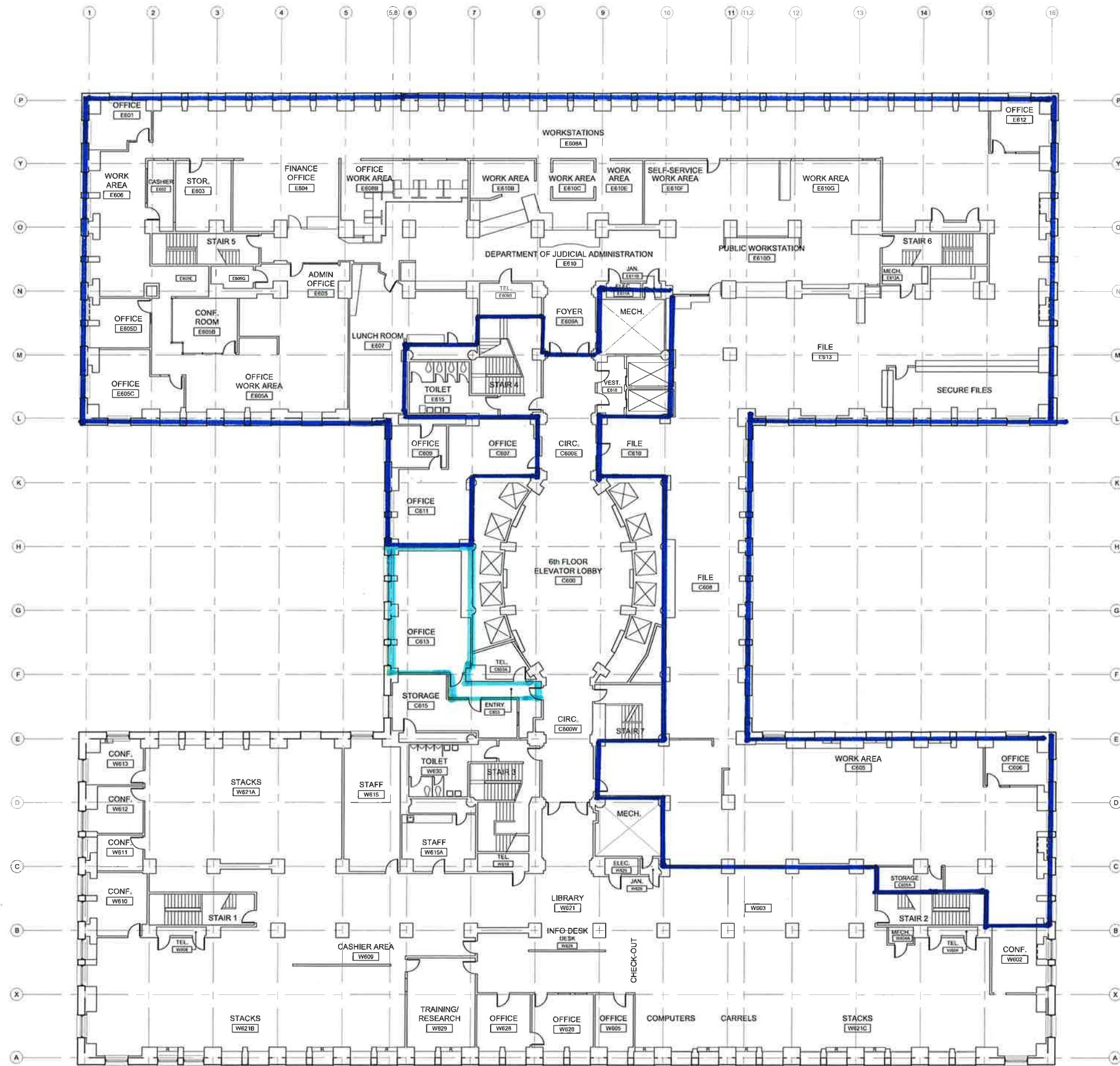


Department of Executive Services Facilities Management Division Capital Planning and Development King County Administration Building 500 Fourth Avenue, Room 320 Seattle, Washington 98104 Telephone (206) 296-1822 Fax (206) 296-0186	KING COUNTY COURTHOUSE 516 THIRD AVENUE SEATTLE, WASHINGTON 98104
	PROJECT # DATE 4.5.07 DRAWN DT CHECKED

FIFTH FLOOR PLAN

5

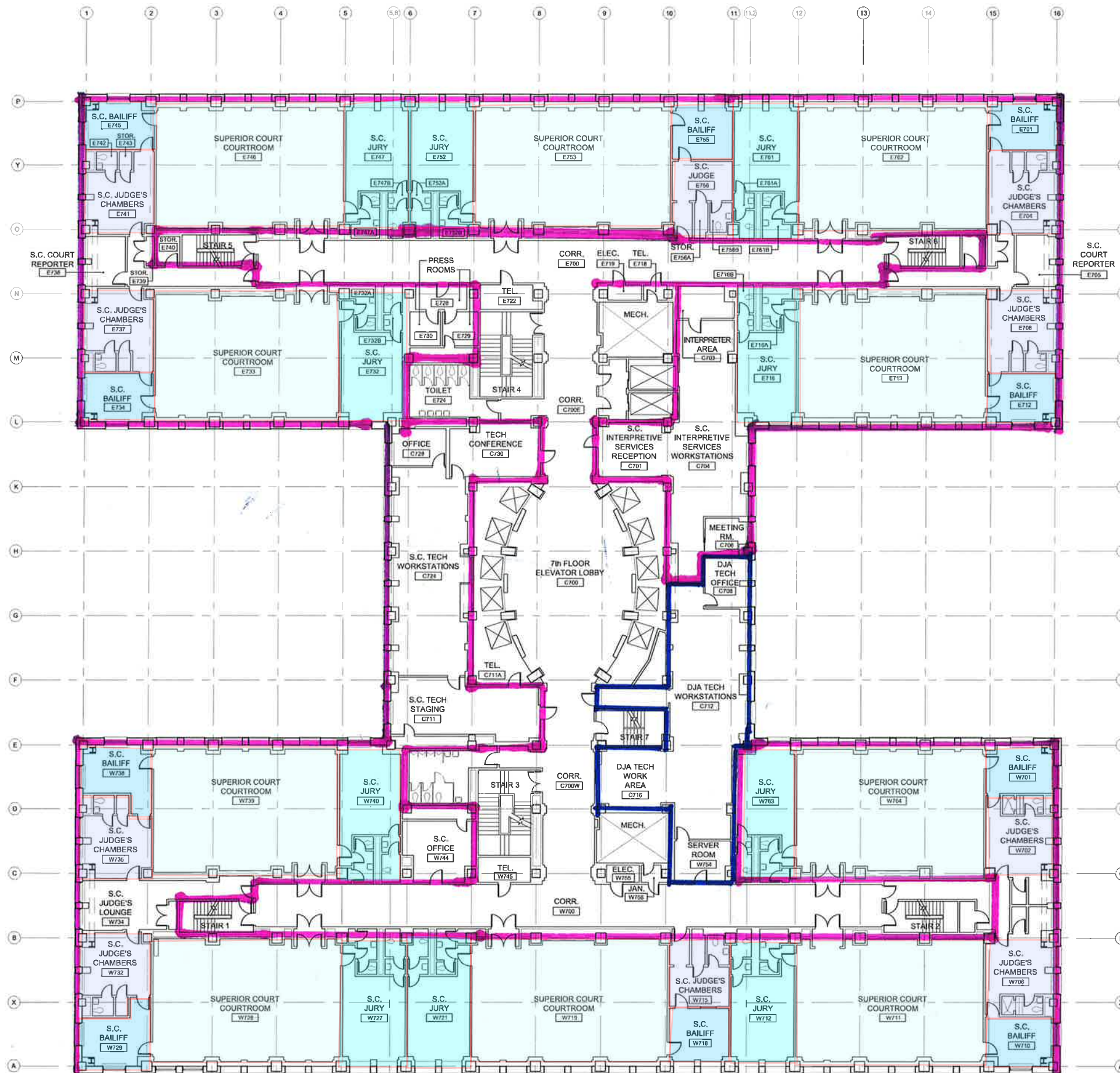
OF



SIXTH FLOOR PLAN
SCALE: 1/16" = 1'-0"



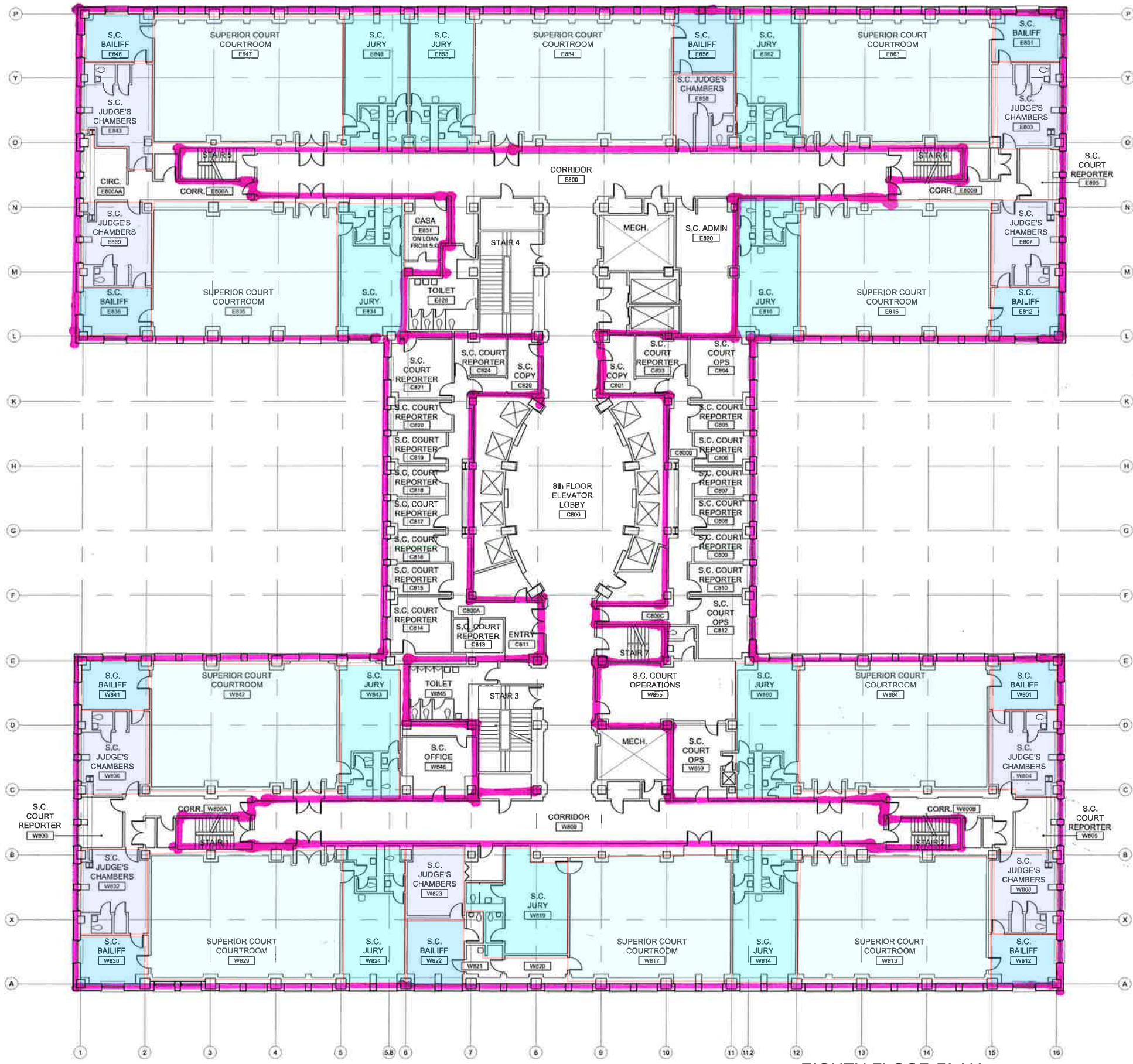
PROJ # DATE DRAWN CHECKED	FILE # D26-A-FP-06.dwg REVISION
	DATE 4.5.07 DRAWN DT CHECKED
SIXTH FLOOR PLAN	
KING COUNTY COURTHOUSE 516 THIRD AVENUE SEATTLE, WASHINGTON 98104	
Department of Executive Services Facilities Management Division Capital Planning and Development King County Administration Building 4th Floor, Room 420 Seattle, Washington, 98104 Telephone (206) 296-1822 Fax (206) 296-0186	
6 OF	



SEVENTH FLOOR PLAN
SCALE: 1/16" = 1'-0"



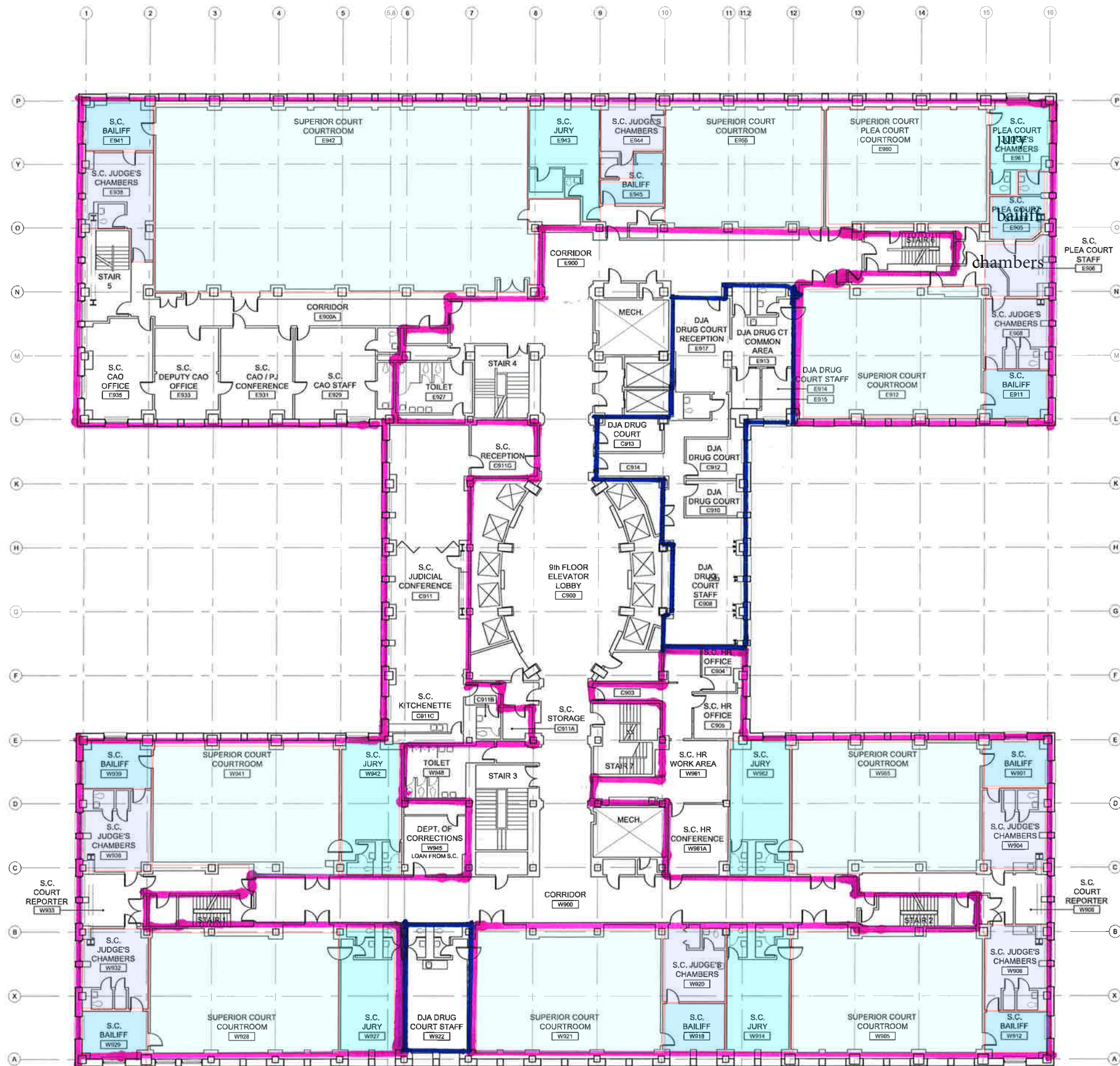
SEVENTH FLOOR PLAN	PROJ.#	DATE	DRAWN	DT
	FILE # 026-A-PP-07.dwg	4.5.07		
	REVISION	CHECKED	DT	DT
	DT	DT	DT	DT
KING COUNTY COURTHOUSE 516 THIRD AVENUE SEATTLE, WASHINGTON 98104				
<p>Department of Executive Services Facilities Management Division Capital Planning and Development King County Administration Building 3rd Floor, Room 320 Seattle, Washington 98104 Telephone (206) 296-1822 Fax (206) 296-0186</p>				
7				
OF				



EIGHTH FLOOR PLAN
SCALE: 1/16" = 1'-0"



EIGHTH FLOOR PLAN	PROJ.#	026-A-PP-08.dwg	REVISION	DATE	DRAWN	DT	CHECKED	
	DATE	3.13.08		DRAWN	DT	CHECKED	DT	DT
	<p>KING COUNTY COURTHOUSE 516 THIRD AVENUE SEATTLE, WASHINGTON 98104</p>							
<p>Department of Executive Services Facilities Management Division Capital Planning and Development King County Administration Building 500 Fourth Avenue, Room 320 Seattle, Washington 98104 Telephone (206) 296-1822 Fax (206) 296-0186</p>								
				<p style="font-size: 24pt; font-weight: bold;">8</p>				<p>OF</p>



NINTH FLOOR PLAN
SCALE: 1/16" = 1'-0"



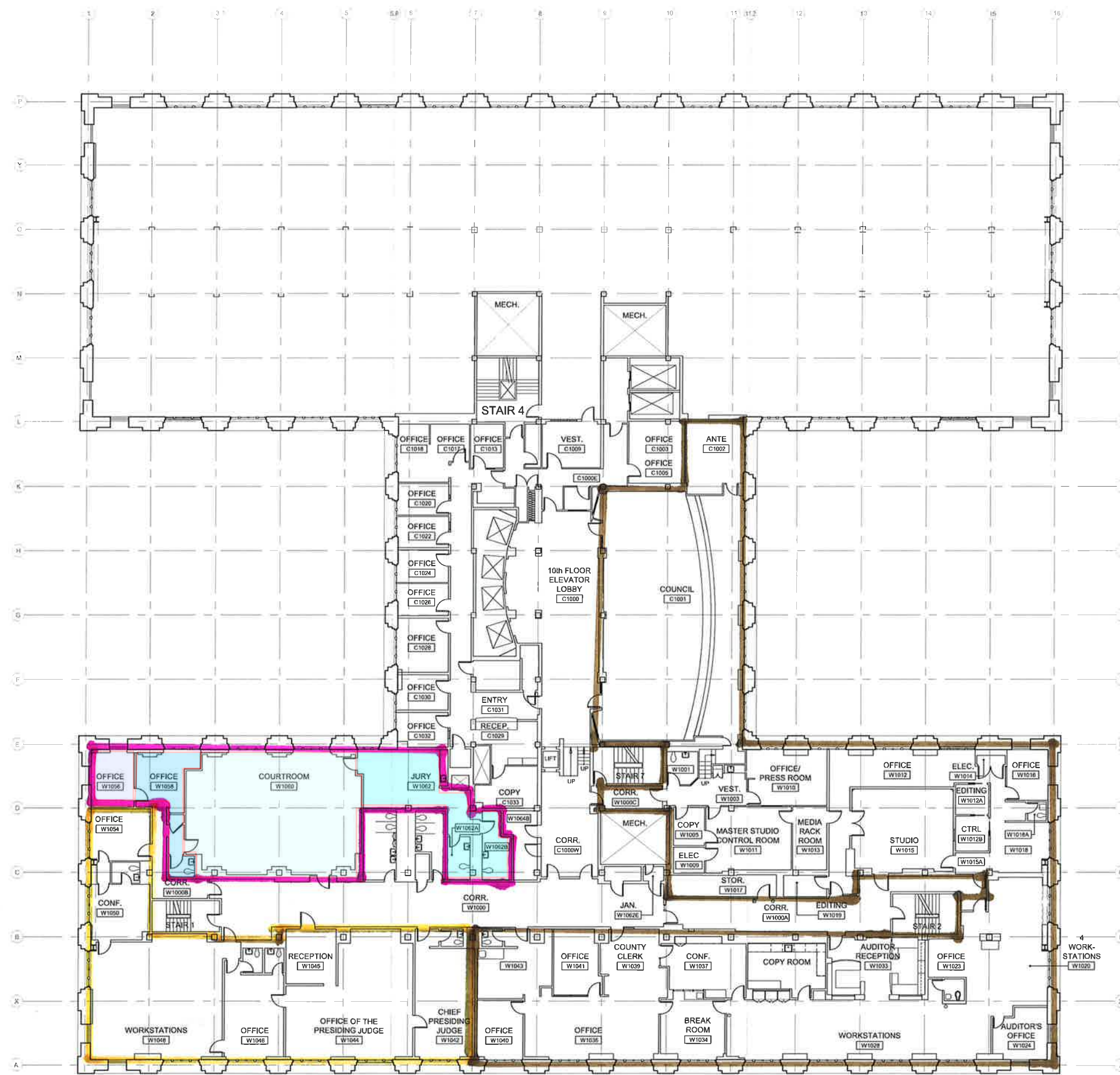
FILE #	U26-A-FP-09.dwg
REVISION	
PROJ #	
DATE	4.5.07
DRAWN	DT
CHECKED	

NINTH FLOOR PLAN

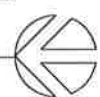
KING COUNTY COURTHOUSE
516 THIRD AVENUE
SEATTLE, WASHINGTON 98104

Department of Executive Services
Facilities Management Division
Capital Planning and Development
King County Administration Building
500 Fourth Avenue, Room 920
Seattle, Washington 98104
Telephone (206) 296-1822 | Fax (206) 296-0186

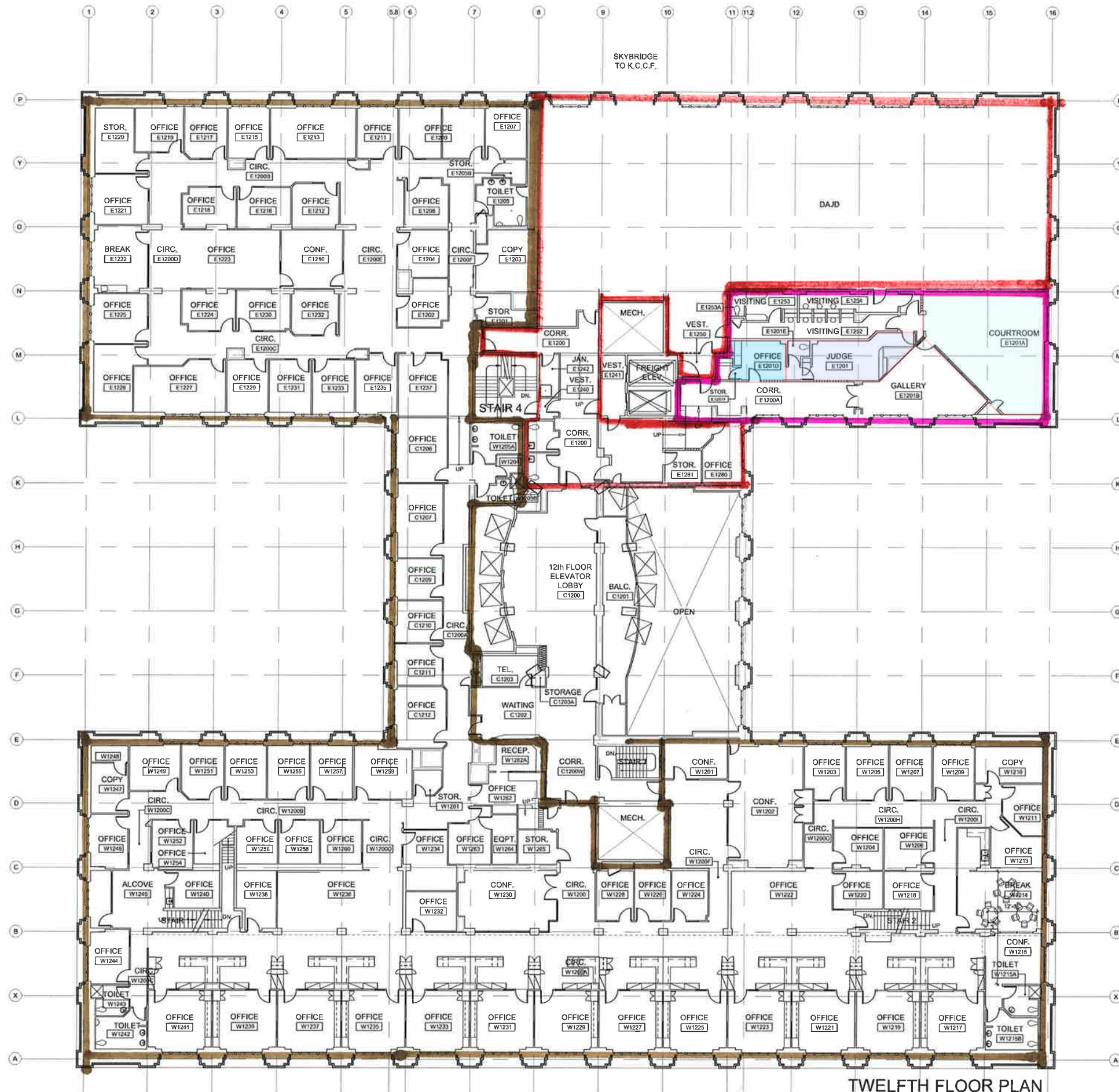




FLOOR PLAN
SCALE: 1/16" = 1'-0"



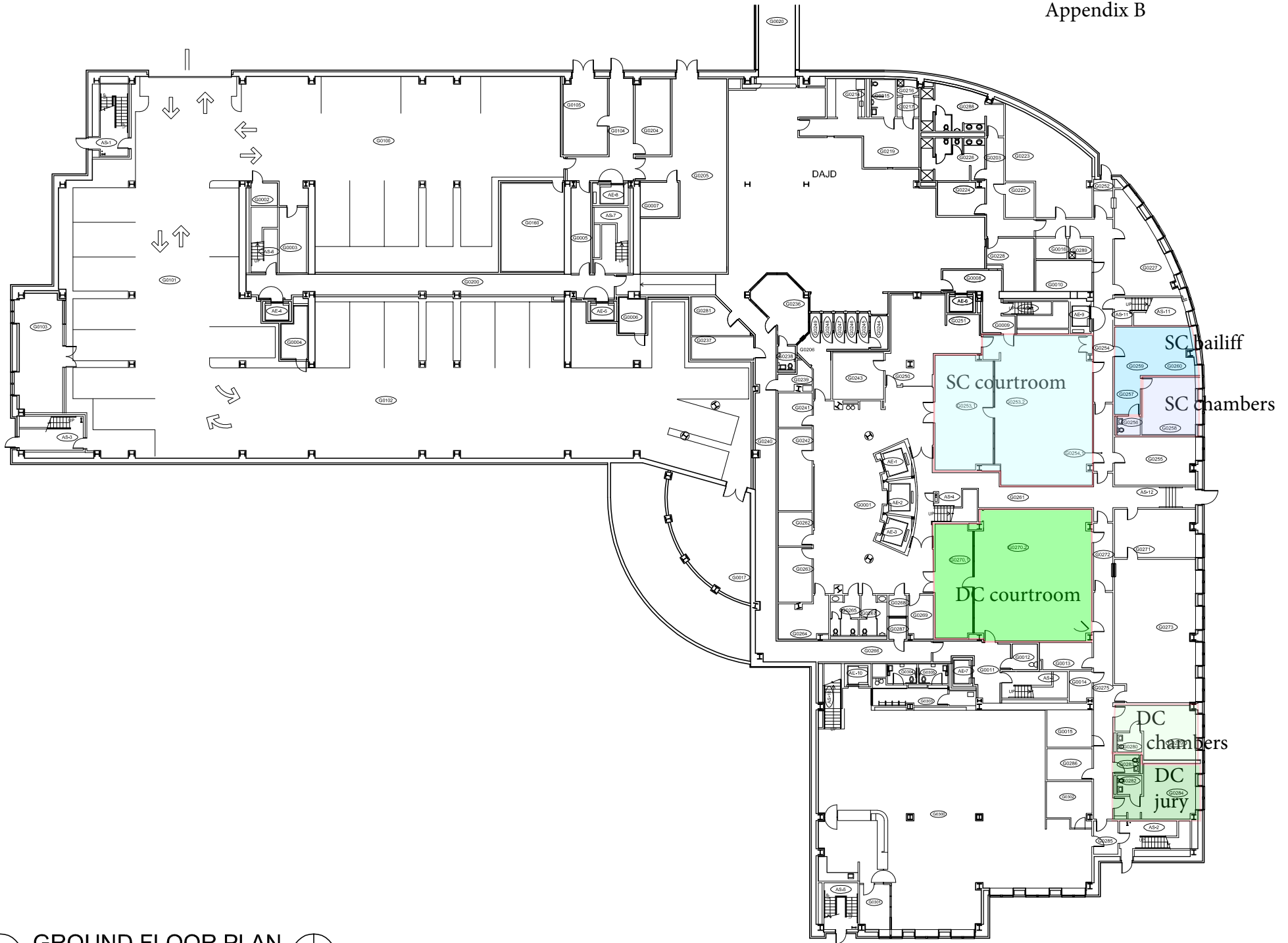
<p>PROJ.#</p> <p>DATE</p> <p>DRAWN</p> <p>CHECKED</p>	<p>FILE # 026-A-FP-10.dwg</p>
	<p>REVISION</p>
	<p>4.5.07</p>
	<p>DT</p>
<p>TENTH FLOOR PLAN</p>	
<p>KING COUNTY COURTHOUSE</p> <p>AS-BUILT FLOOR PLANS</p> <p>KING COUNTY COURTHOUSE 516 THIRD AVENUE SEATTLE, WASHINGTON 98104</p>	
<p>Department of Executive Services Facilities Management Division Capital Planning and Development King County Administration Building 500 Fourth Avenue, Room 320 Seattle, Washington 98104 Telephone (206) 296-1822 Fax (206) 296-0186</p>	
<p>10</p> <p>OF</p>	



TWELFTH FLOOR PLAN
SCALE: 1/16" = 1'-0"

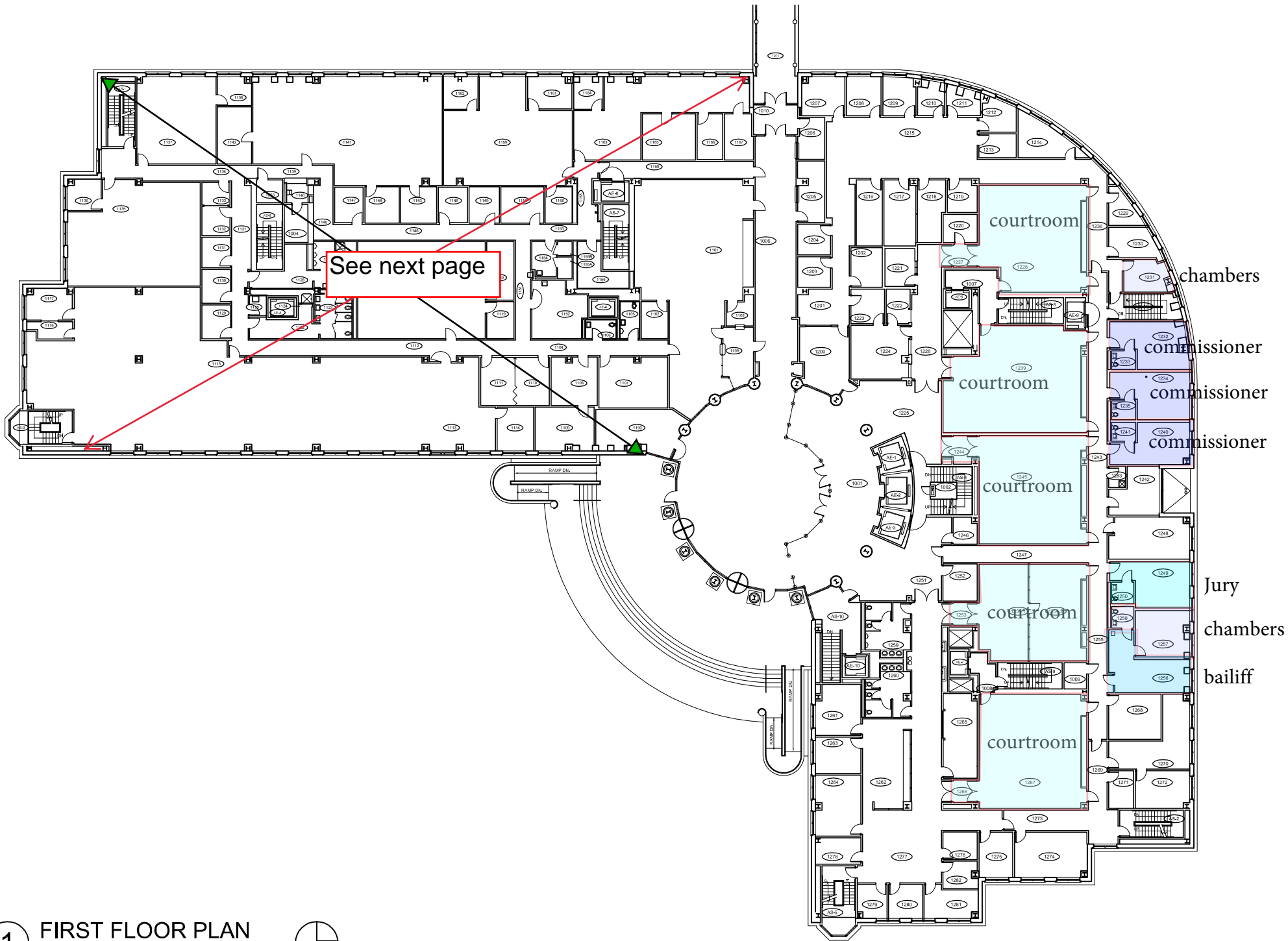


Department of Executive Services Facilities Management Division Capital Planning and Development King County Administration Building 5th Floor, Room 520 Seattle, Washington, 98104 Telephone (206) 205-0516 Fax (206) 296-0186		KING COUNTY CO. JR. HOUSE 515 THIRD AVENUE SEATTLE, WASHINGTON 98104	
TWELFTH FLOOR PLAN			
PROJ.# DATE DRAWN CHECKED	FILE # REVISION DATE DRAWN CHECKED	026-A-FP-12.dwg DT DT	DT DT
 King County		12 OF	



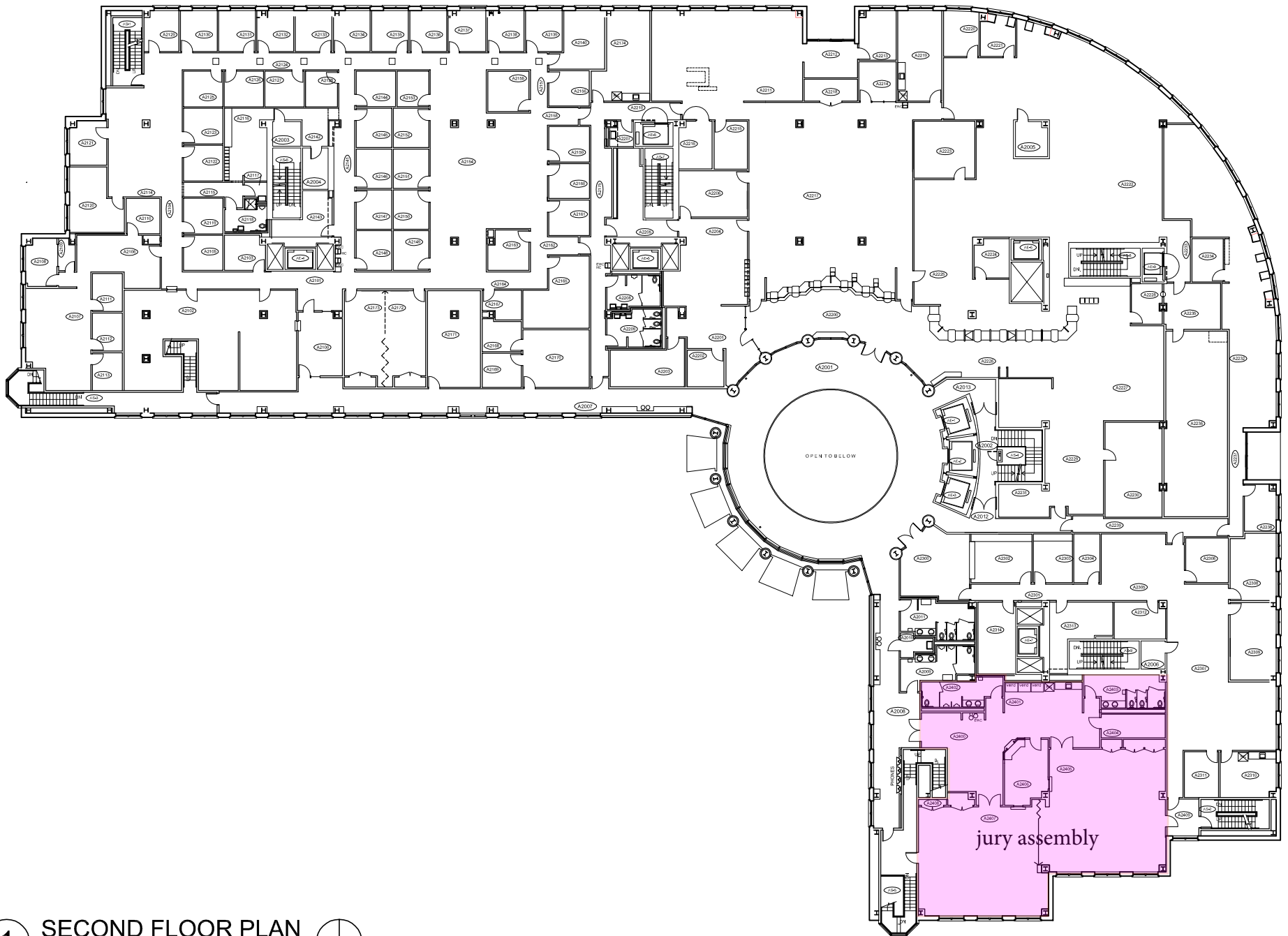
1 GROUND FLOOR PLAN
SCALE: NONE



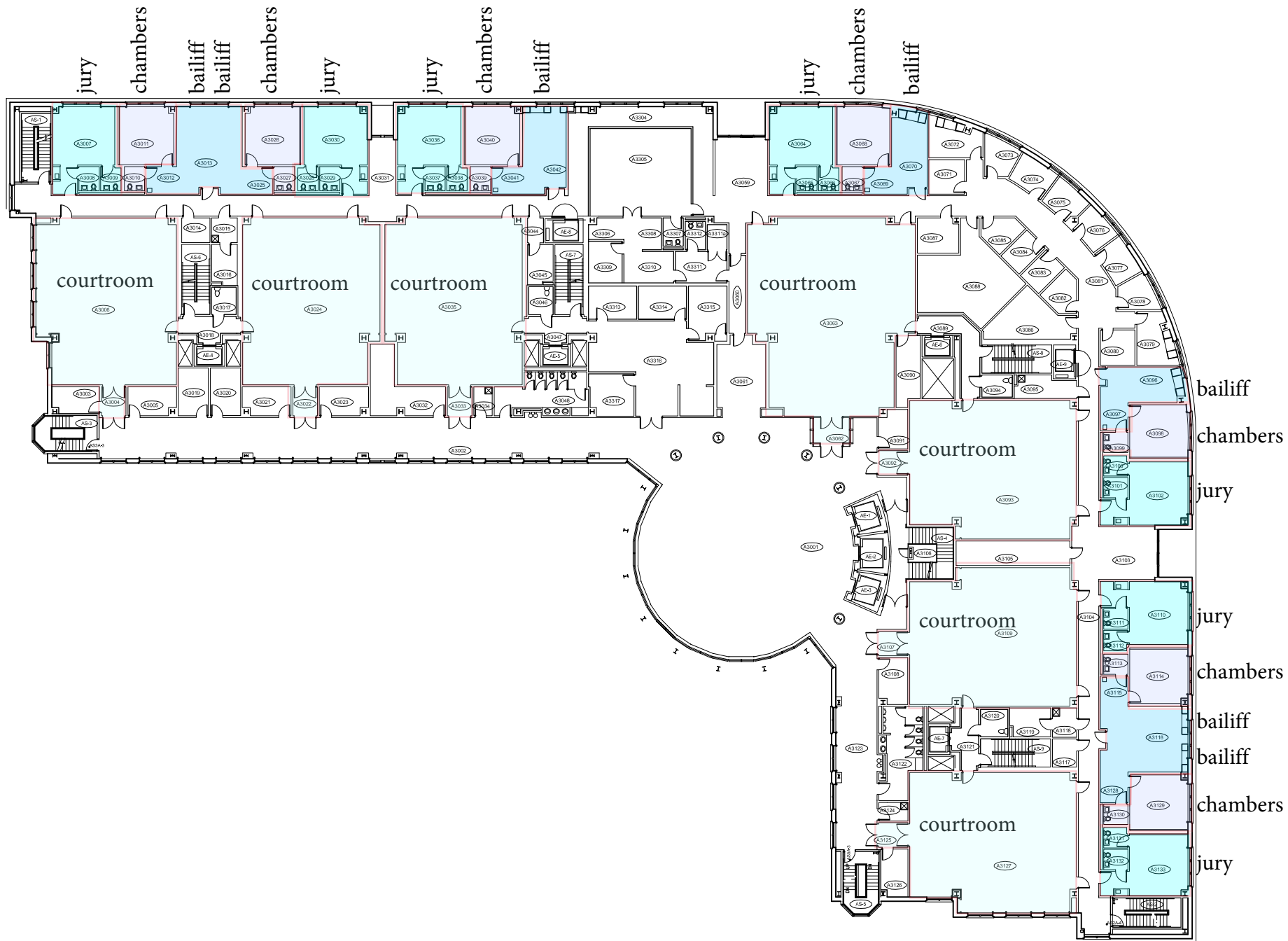


1 FIRST FLOOR PLAN
SCALE: NONE





1 SECOND FLOOR PLAN
SCALE: NONE

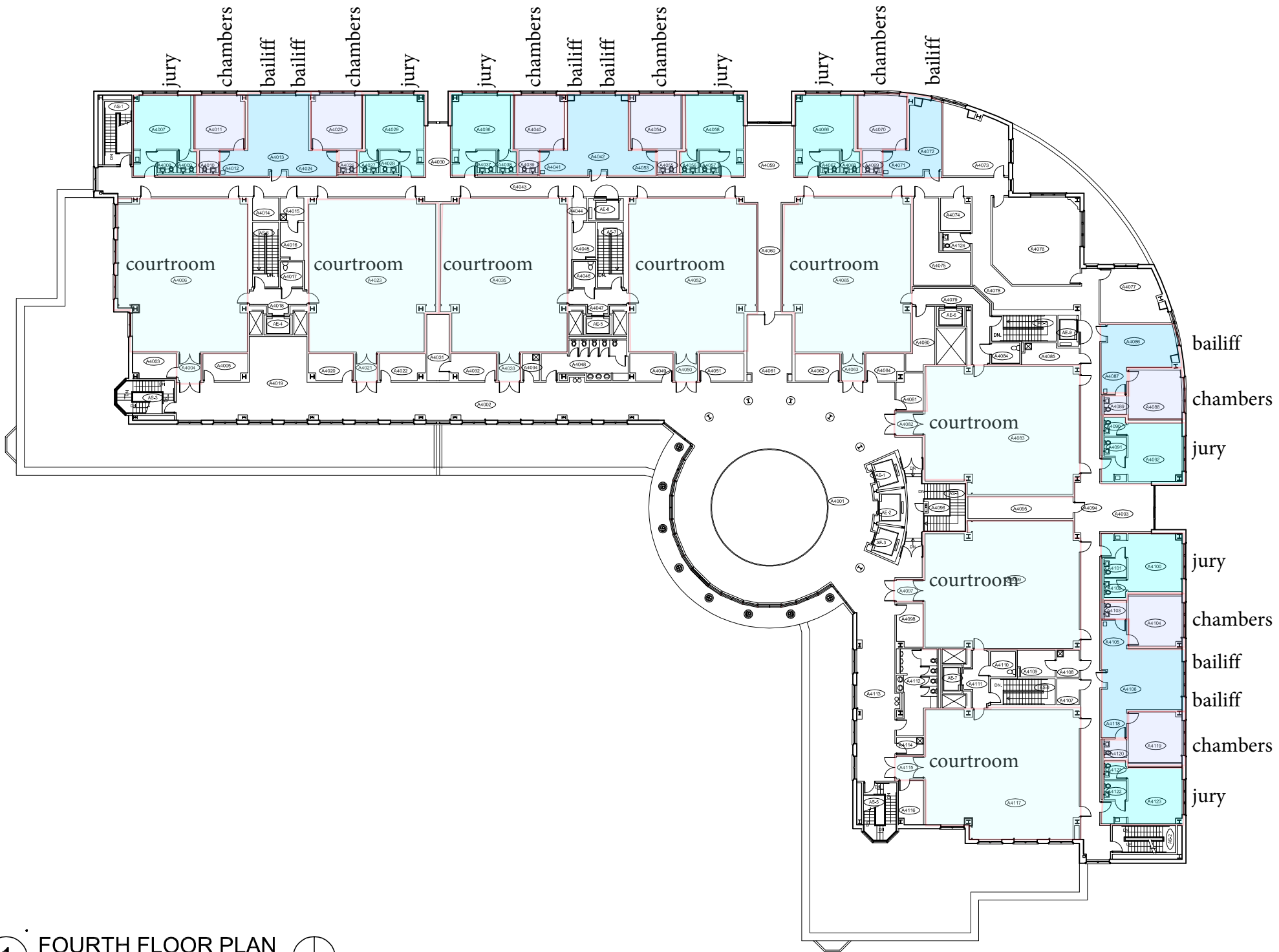


1

THIRD FLOOR PLAN

SCALE: NONE





1 FOURTH FLOOR PLAN
SCALE: NONE



Howard S. Wright
415 1st Avenue North, Suite 400
Seattle, WA 98109
t+1 206 447 7654 f+1 206 447 7727



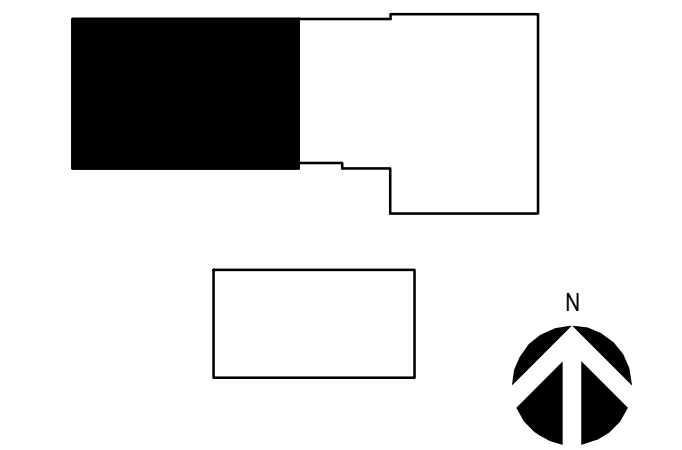
Hellmuth, Obata + Kassabaum, Inc.
1218 Third Avenue, Suite 1315
Seattle, WA 98101 USA
t+1 206 493 1771



Integrus Architecture
117 South Main Street, Suite 100
Seattle, WA 98101
t+1 206 628 3137 f+1 206 328 3138

All reproductions & intellectual property rights reserved © 2016. In Association with

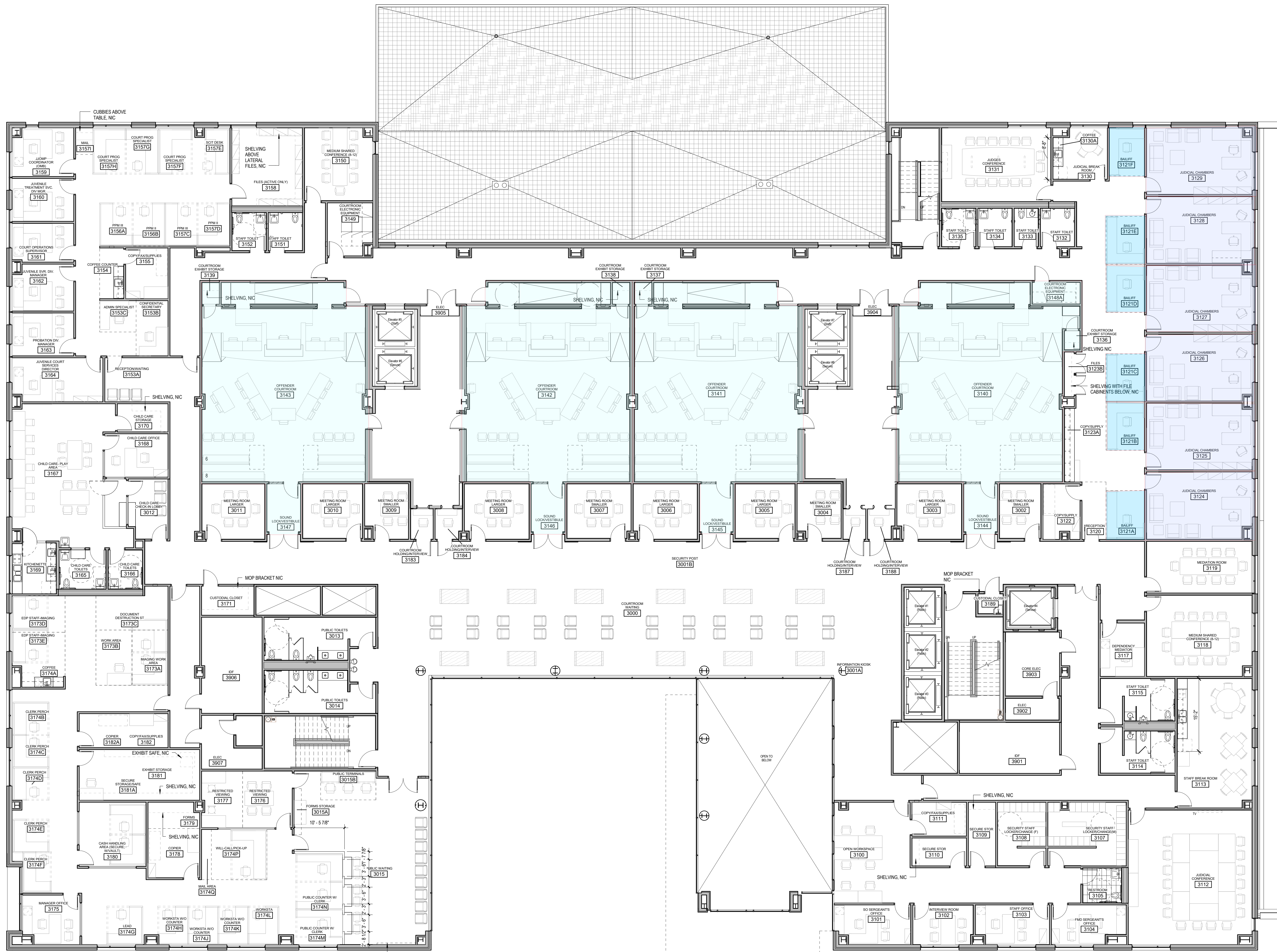
Key Plan



Professional Seals

No.	Description	Date

Seattle DPD Stamp



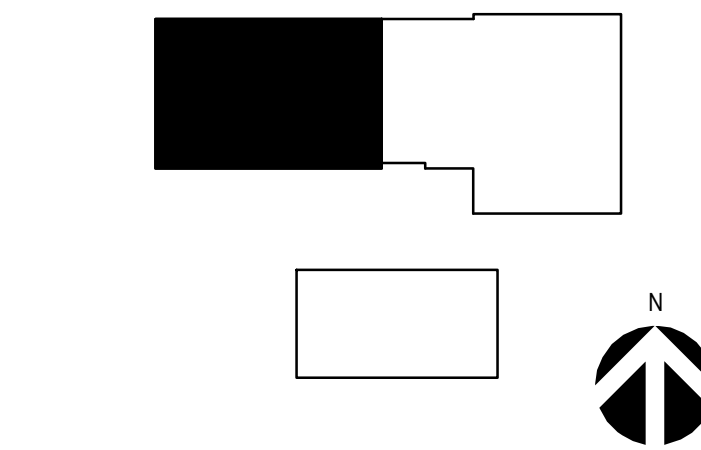
1 FURNITURE PLAN - LEVEL 3 - WEST
1/8" = 1'-0"

Date of First Issue:
Project No: 600863013 SDC1 No: 6003324
Sheet Title:



1 FURNITURE PLAN - LEVEL 4 - WEST
3/8" = 1'-0"

Key Plan



Professional Seals

No. Description Date

Seattle DPD Stamp

Date of First Issue:
Project No: 600863013 SDCI No: 6053324
Sheet Title:

FURNITURE PLAN -
LEVEL 4