



**King County**

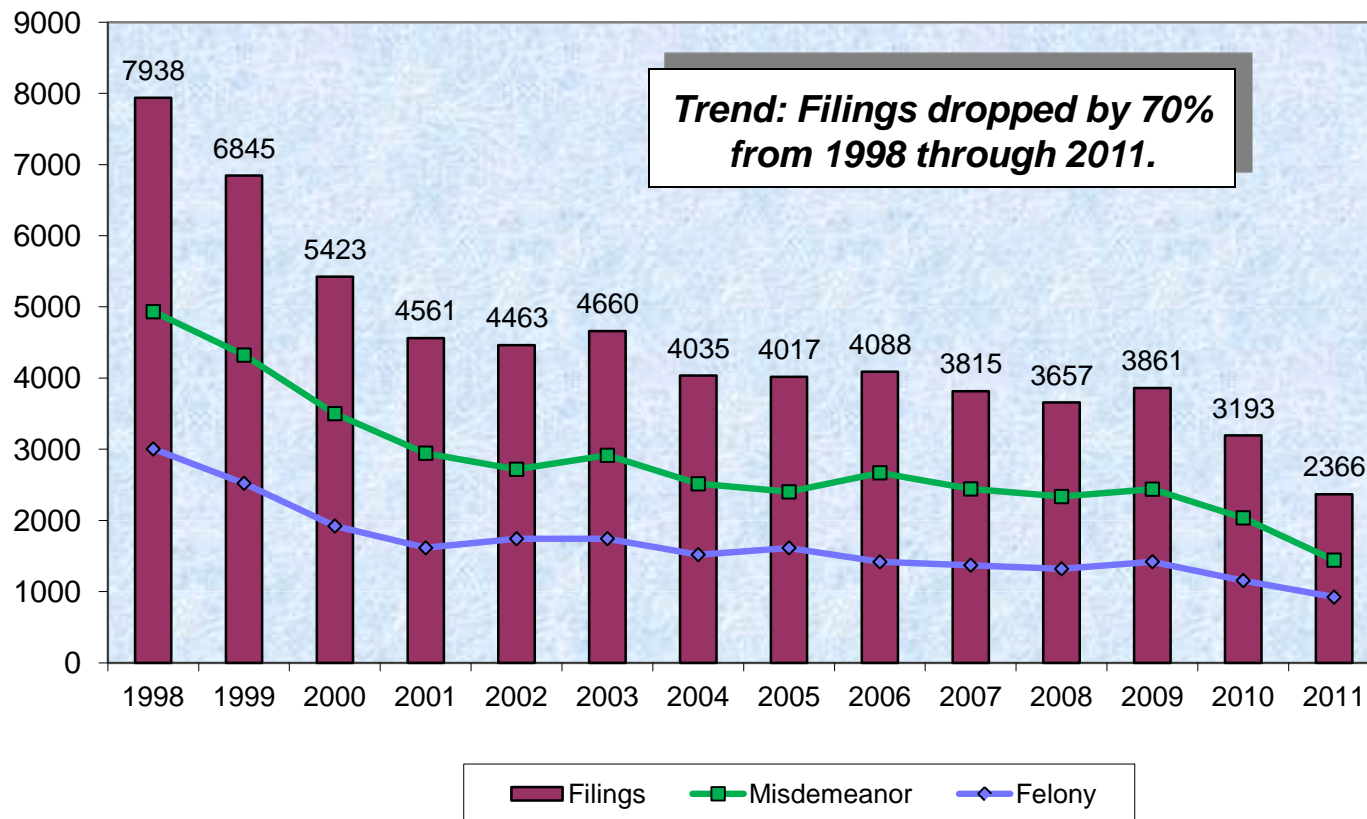
# Juvenile Justice Updates

**Law, Justice, Health, and Human  
Services Committee**

**May 22, 2012**

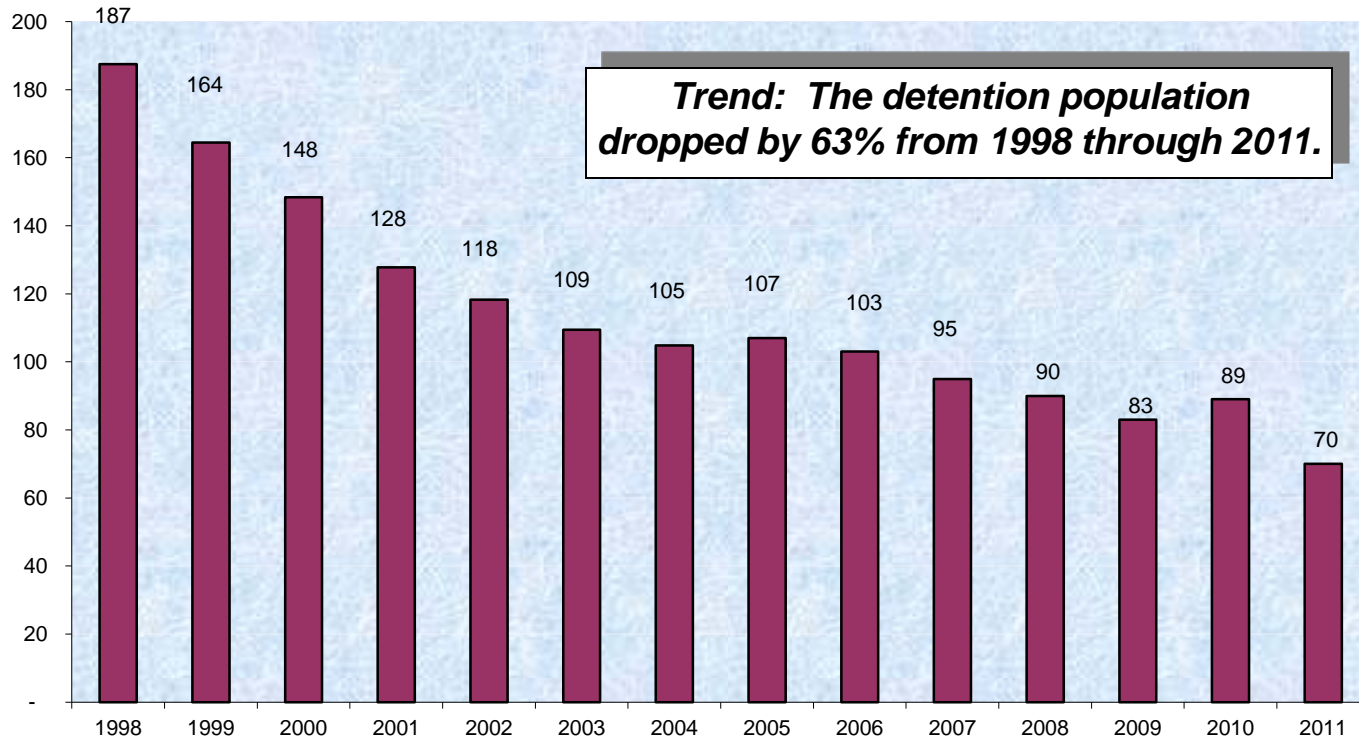
# King County Juvenile Justice Trends

Juvenile Offender Filings -- King County  
1998 - 2011



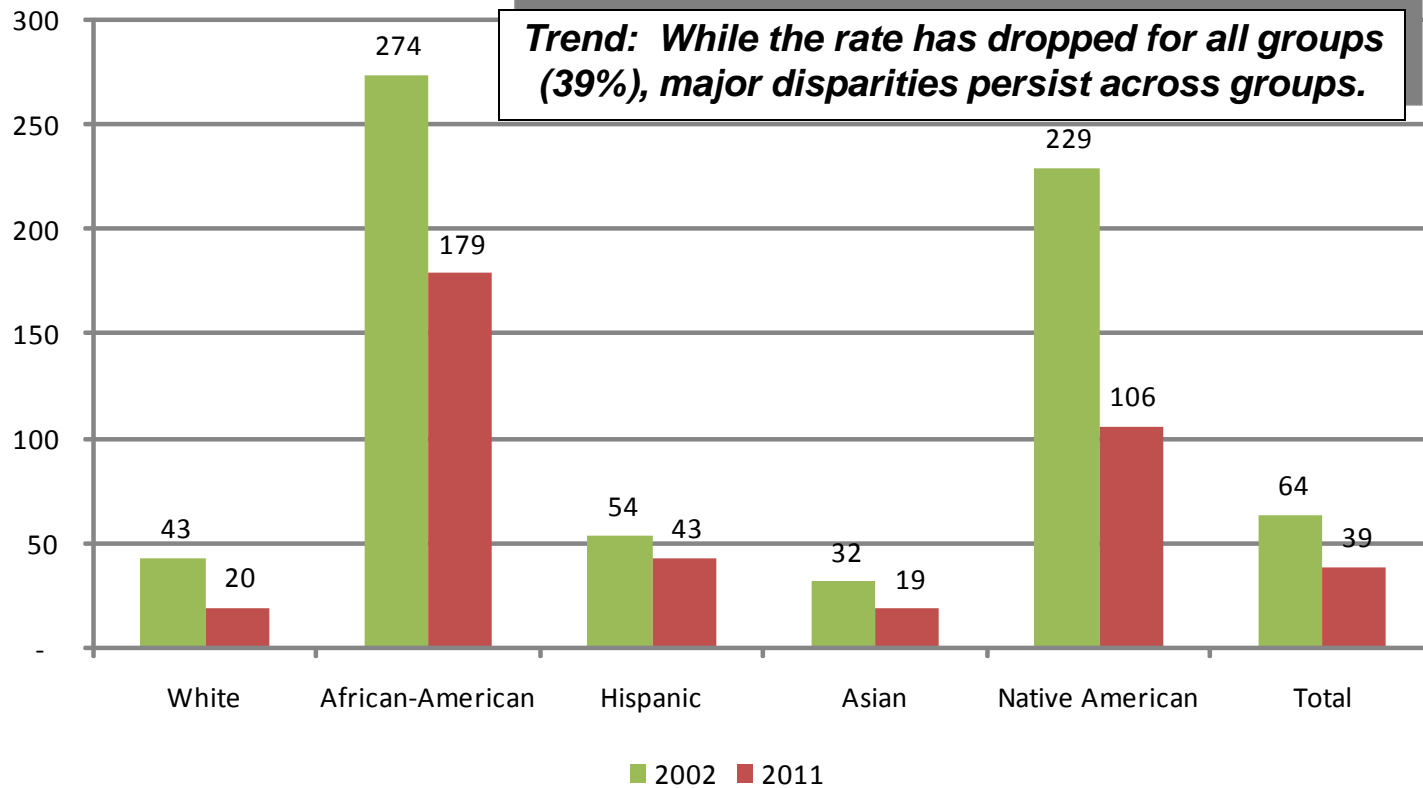
# King County Juvenile Justice Trends

**King County Secure Juvenile Detention Population  
1998-2011**



# Disproportionality Trends

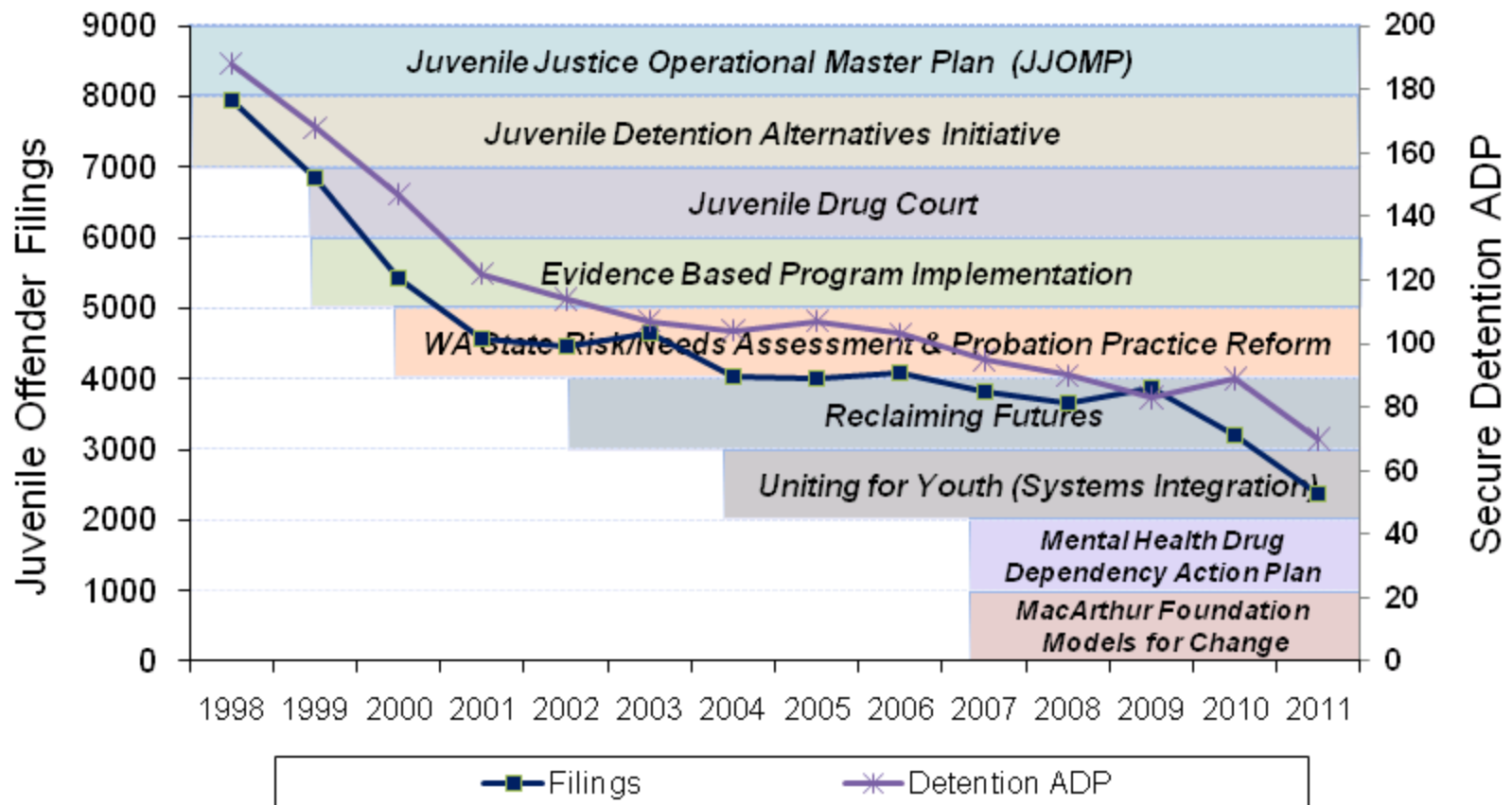
## Incarceration Rate - Juvenile Detention 2002 vs 2011 (Per 100,000 Youth\*)



\* Sources: 2002 demographic data is WA State OFM. 2011 demographic data is 2010 Census.

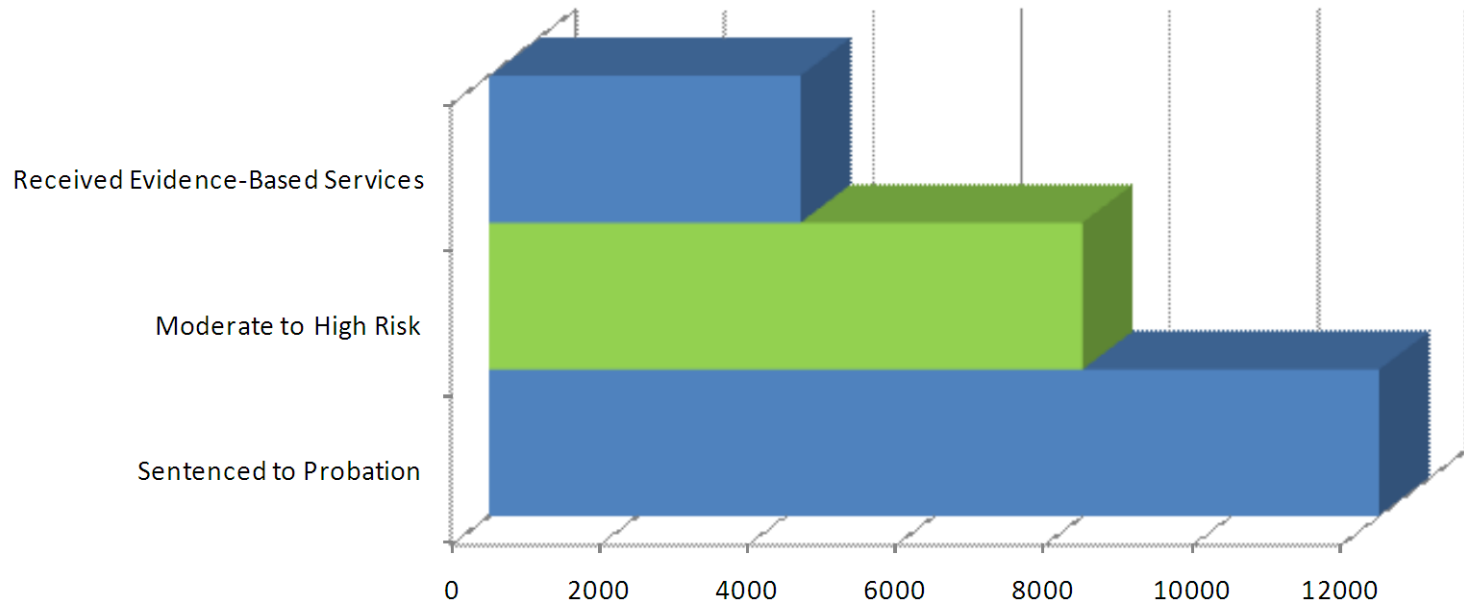
# Juvenile Justice Reform Timeline

**Juvenile Justice Trends and Initiatives  
1998 - 2011**



# Scale of Juvenile Justice Reforms

**Estimated Number of Youth Participating in Reforms\*  
2002-2011**



\* Estimates provide order of magnitude only. They do not include siblings who participated in services.

# Current Priority Issues

- Working Cross System and Upstream
- Behavioral Health
- Education/Employment
- Disproportionate Minority Contact (DMC)
- Youth Violence and Gang Activity

# Working Across Systems

## Risk

- About 2/3<sup>rd</sup> of youth referred to juvenile court on a criminal matter in 2006 had some involvement in our state's child welfare system
- The more extensive the involvement in child welfare, the more time youth spent in detention and had higher recidivism
- Youth of color were more likely to have greater child welfare involvement

## Response

- Uniting for Youth
- Protocols for Probation Counselors and Social Workers
- Information Sharing Guide
- Cross-System Trainings
- Improved Diversion Processes



# Behavioral Health Issues

## Risk

Court-involved youth:

- 73% have mental health and/or substance abuse disorders with most having multiple disorders.
- Only 1 in 20 youth who need treatment receive services.
- Over 60% have experienced trauma or victimization.
- Rates of PTSD are comparable to or greater than soldiers returning from deployment.

## Response

- Reclaiming Futures as the model
- Probation practices
- Juvenile Justice Assessment Team (JJAT) including trauma screening
- Evidence-Based Programs/King County Juvenile Court Menu of Services
- Increased youth treatment retention rates – from 54% to 77% over the past 11 years

# Education/Employment Issues

## Risk Factors/Barriers

- 30 percent of all youth not graduating from high school
- Only 21 percent of youth assessed by probation as likely to stay in school and graduate
- 76 percent of adult prison inmates do not have a high school diploma or GED
- 67 percent of jobs in WA State will require post-secondary education by 2018

## Response

- Regional Partnerships:
  - Superior Court Employment and Education Training
  - King County Employment and Education Resources
  - PathNet Dropout Re-engagement System
- EER YouthSource and Learning Center North at Shoreline CC
- Back to School Employment Training (CJ funds for gangs)
- Avanza (CJ funds for gangs)
- Workforce Development Council (WIA funds)

# Disproportionality Issues

## Risk

- Youth of color are overrepresented at nearly every stage of the juvenile court process.
- African American youth:
  - Nearly **5** times more likely than white youth to be referred by law enforcement,
  - Over **7** times more likely to have charges filed and
  - Over **11** times more likely to spend time in secure confinement.

## Response

- Juvenile Justice 101
- Warrant Prevention Program
- Race & Criminal Justice Taskforce
- DMC Workgroup
- Cross-System Efforts
- Equity and Social Justice Initiative

# Youth Violence & Gang Issues

## Risk

- Over 300 gangs identified in Washington State<sup>1</sup>.
- Reported gang activity has climbed steadily from 2002 to 2008, in suburban counties (22%), rural counties (16%), smaller cities (15%), and larger cities (13%)<sup>2</sup>.
- King County has also experienced an increase in juvenile gang-related crime and violence.

## Response

- CJ Reserve funding for a balanced approach including prevention and intervention
- Partnerships with Alive & Free Program and SYVPI
- Suburban KC Coordinating Council on Gangs

<sup>1</sup> Gang & Youth Violence Interventions (2010) Washington State DSHS Report

<sup>2</sup> Highlights of the 2008 National Youth Gang Survey (2010)

# Questions & Discussion

## Presenters:

- Judge Helen Halpert, Chief Juvenile Judge
- Bruce Knutson, Director, Juvenile Court Services
- Jim Vollendroff, Assistant Division Director, MHCADSD, DCHS
- George Dignan, Administrator, Work Training Program, DCHS
- Michael Gedeon, Manager – Strategy Section, PSB