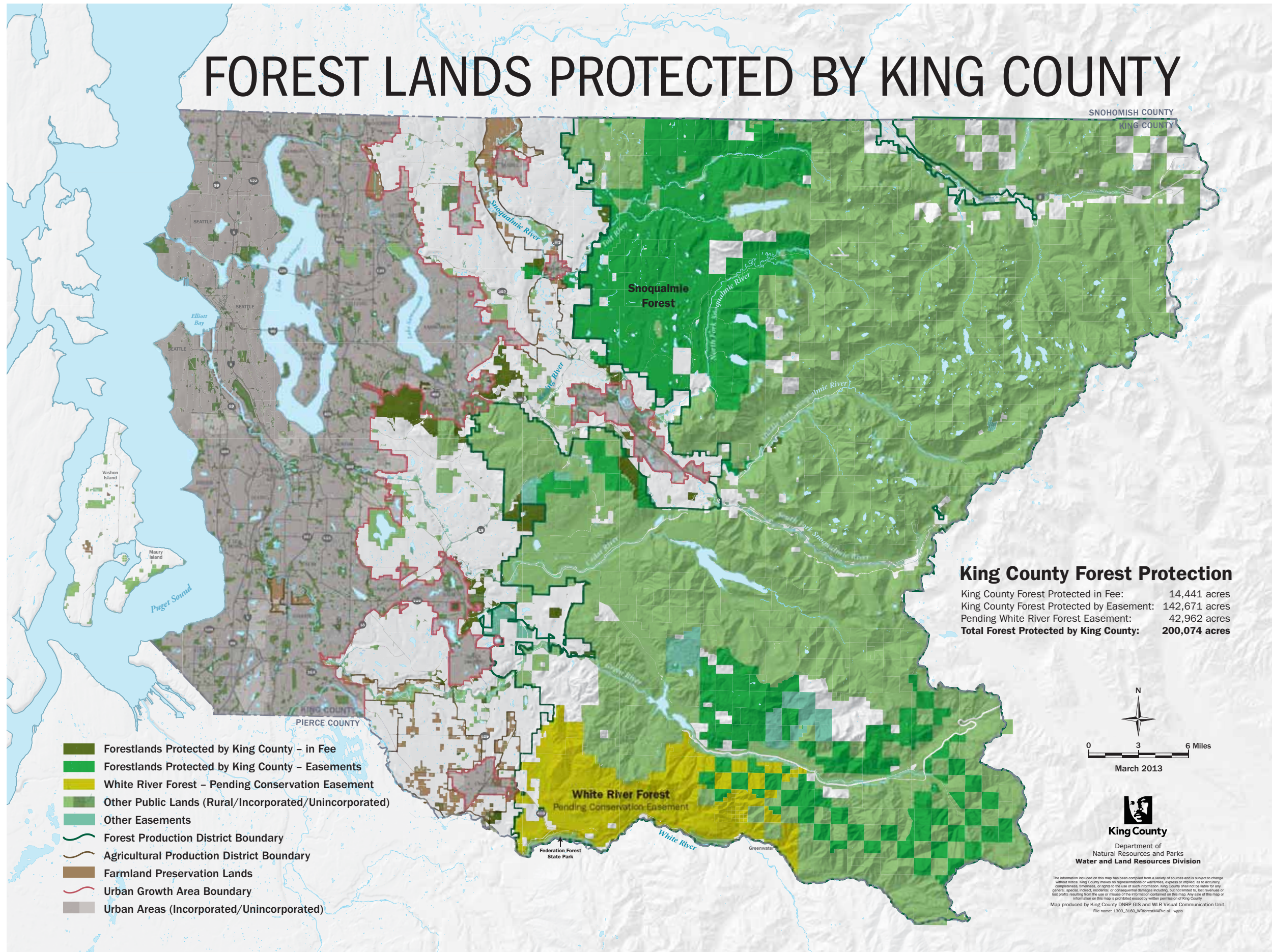


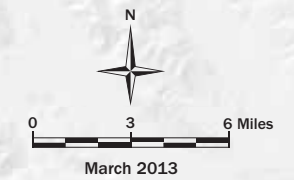
# FOREST LANDS PROTECTED BY KING COUNTY



## King County Forest Protection

King County Forest Protected in Fee:	14,441 acres
King County Forest Protected by Easement:	142,671 acres
Pending White River Forest Easement:	42,962 acres
<b>Total Forest Protected by King County:</b>	<b>200,074 acres</b>

- Forestlands Protected by King County - in Fee
- Forestlands Protected by King County - Easements
- White River Forest - Pending Conservation Easement
- Other Public Lands (Rural/Incorporated/Unincorporated)
- Other Easements
- Forest Production District Boundary
- Agricultural Production District Boundary
- Farmland Preservation Lands
- Urban Growth Area Boundary
- Urban Areas (Incorporated/Unincorporated)



The information included on this map has been compiled from a variety of sources and is subject to change without notice. King County makes no representations or warranties, express or implied, as to accuracy, completeness, timeliness, or rights to the use of such information. King County shall not be liable for any general, special, indirect, incidental, or consequential damages including, but not limited to, lost revenues or lost profits resulting from the use or misuse of the information contained on this map. Any use of this map or information on this map is prohibited except by written permission of King County.  
Map produced by King County DNR/P GIS and WLR Visual Communication Unit.  
File name: 1303\_3160\_WRForestMAPK.cai vegao