

Map Amendment C

Rainier Ridge Four-to-One Proposal (south of the intersection of SE 288th Street and 238th Ave SE).

1 AMENDMENT TO THE KING COUNTY COMPREHENSIVE PLAN POTENTIAL
2 ANNEXATION AREA MAP

3
4
5
6
7
8
9
10
11
12
13
14
15
16
17
18
19
20
21
22
23
24
25
26
27
28
29
30
31
32
33
34
35
36
37

Amend the Potential Annexation Area Map by assigning the 14-acre portion of the northwest portion of the following parcel to the Potential Annexation Area of the City of Maple Valley, as shown on the attached map:

153100-0010

Effect: Amends the Potential Annexation Area Map by adding a newly created urban area to the City of Maple Valley’s PAA. The City of Maple Valley must similarly amend its own Comprehensive Plan to officially designate the area as part of its PAA, and the Growth Management Planning Council must adopt a motion approving the change.

Rainier Ridge UGA Expansion and Redesignation Map



Executive Recommended Potential Annexation Area (to Maple Valley)

The information included on this map has been compiled by King County staff from a variety of sources and is subject to change without notice. King County makes no representations or warranties, express or implied, as to accuracy, completeness, timeliness, or rights to the use of such information. This document is not intended for use as a survey product. King County shall not be liable for any general, special, indirect, incidental, or consequential damages including, but not limited to, lost revenues or lost profits resulting from the use or misuse of the information contained on this map. Any sale of this map or information on this map is prohibited except by written permission of King County.

Date: March 3, 2014
\\gisnas1\Projects\ddes\2014_CompPlan\projects\RainierRidge_rec_PAAbw.mxd
\\gisnas1\Projects\ddes\2014_CompPlan\projects\RainierRidge_rec_PAAbw.pdf
MCCOMBSP



Recommended PAA



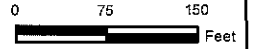
Incorporated Areas



Urban Growth Boundary



Proposed Urban Growth Boundary



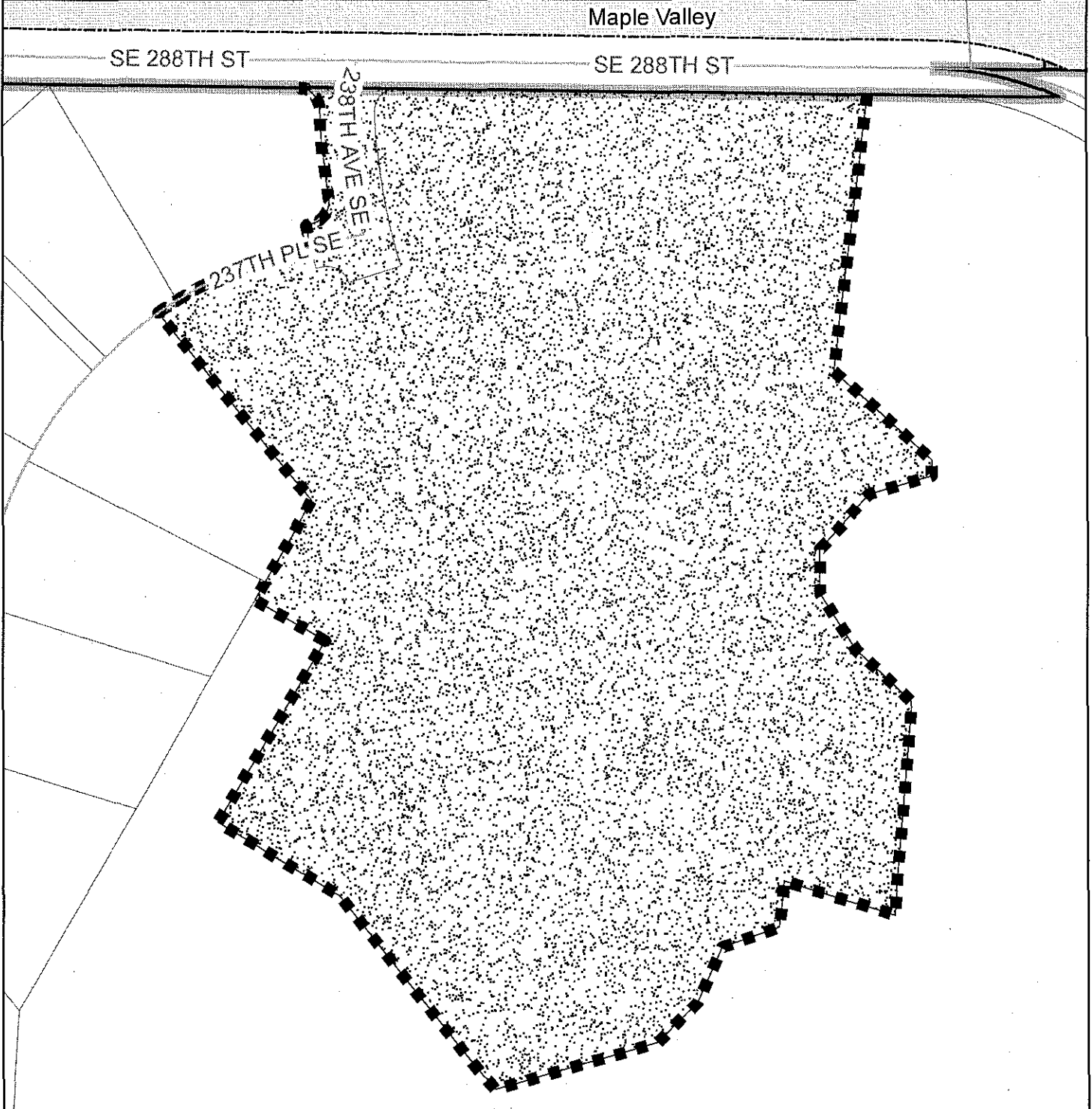
Maple Valley

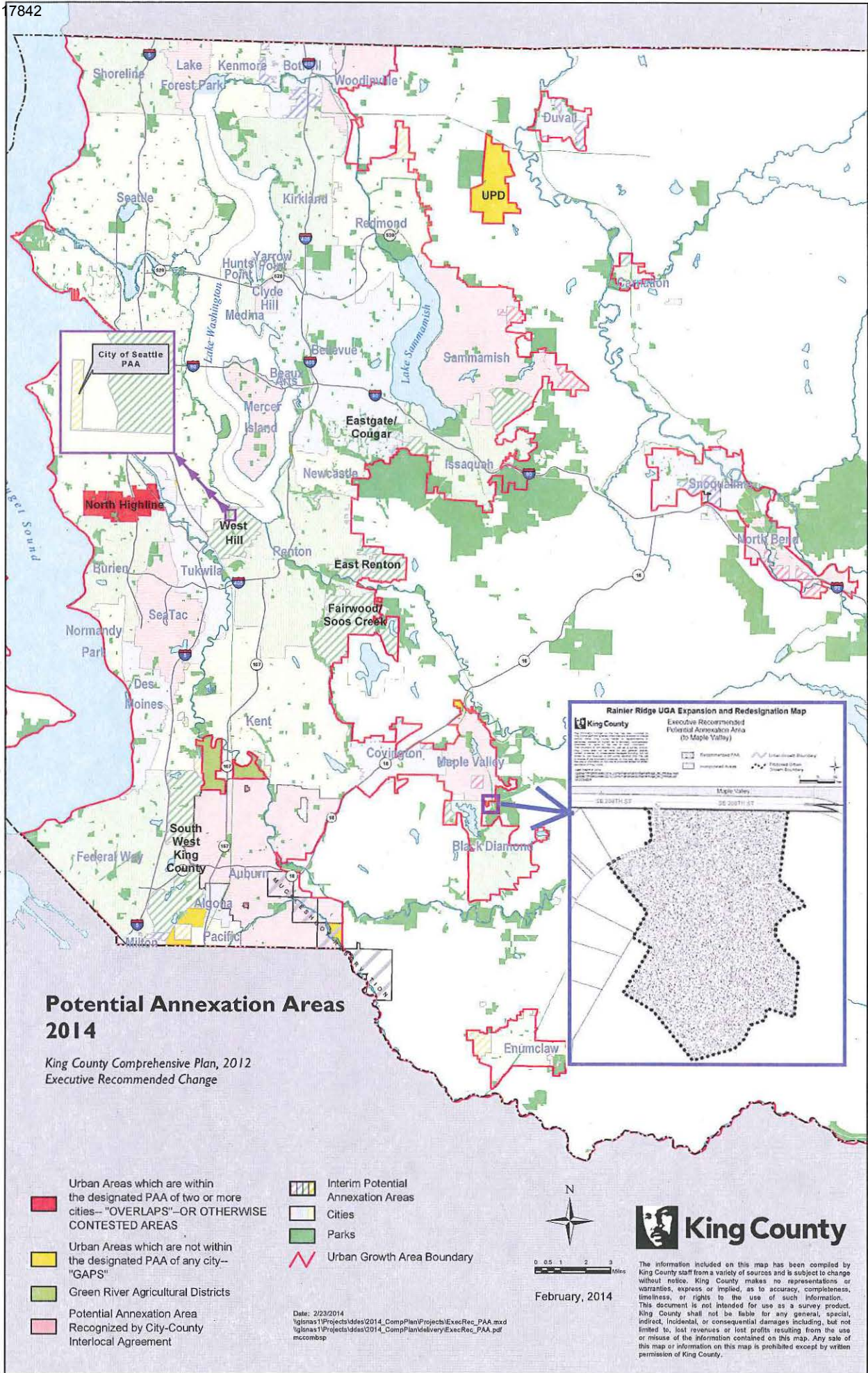
SE 288TH ST

SE 288TH ST

238TH AVE SE

237TH PL SE





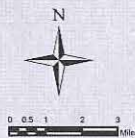
Potential Annexation Areas 2014

King County Comprehensive Plan, 2012
Executive Recommended Change

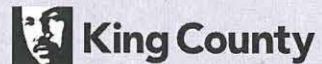
- Urban Areas which are within the designated PAA of two or more cities--"OVERLAPS"--OR OTHERWISE CONTESTED AREAS
- Urban Areas which are not within the designated PAA of any city--"GAPS"
- Green River Agricultural Districts
- Potential Annexation Area Recognized by City-County Interlocal Agreement

- Interim Potential Annexation Areas
- Cities
- Parks
- Urban Growth Area Boundary

Date: 2/23/2014
\\gissas1\Projects\ddes\2014_CompPlan\Projects\ExecRec_PAA.mxd
\\gissas1\Projects\ddes\2014_CompPlan\Inventory\ExecRec_PAA.pdf
mccombsp



February, 2014



The information included on this map has been compiled by King County staff from a variety of sources and is subject to change without notice. King County makes no representations or warranties, express or implied, as to accuracy, completeness, timeliness, or rights to the use of such information. This document is not intended for use as a survey product. King County shall not be liable for any general, special, indirect, incidental, or consequential damages including, but not limited to, lost revenues or lost profits resulting from the use or misuse of the information contained on this map. Any sale of this map or information on this map is prohibited except by written permission of King County.