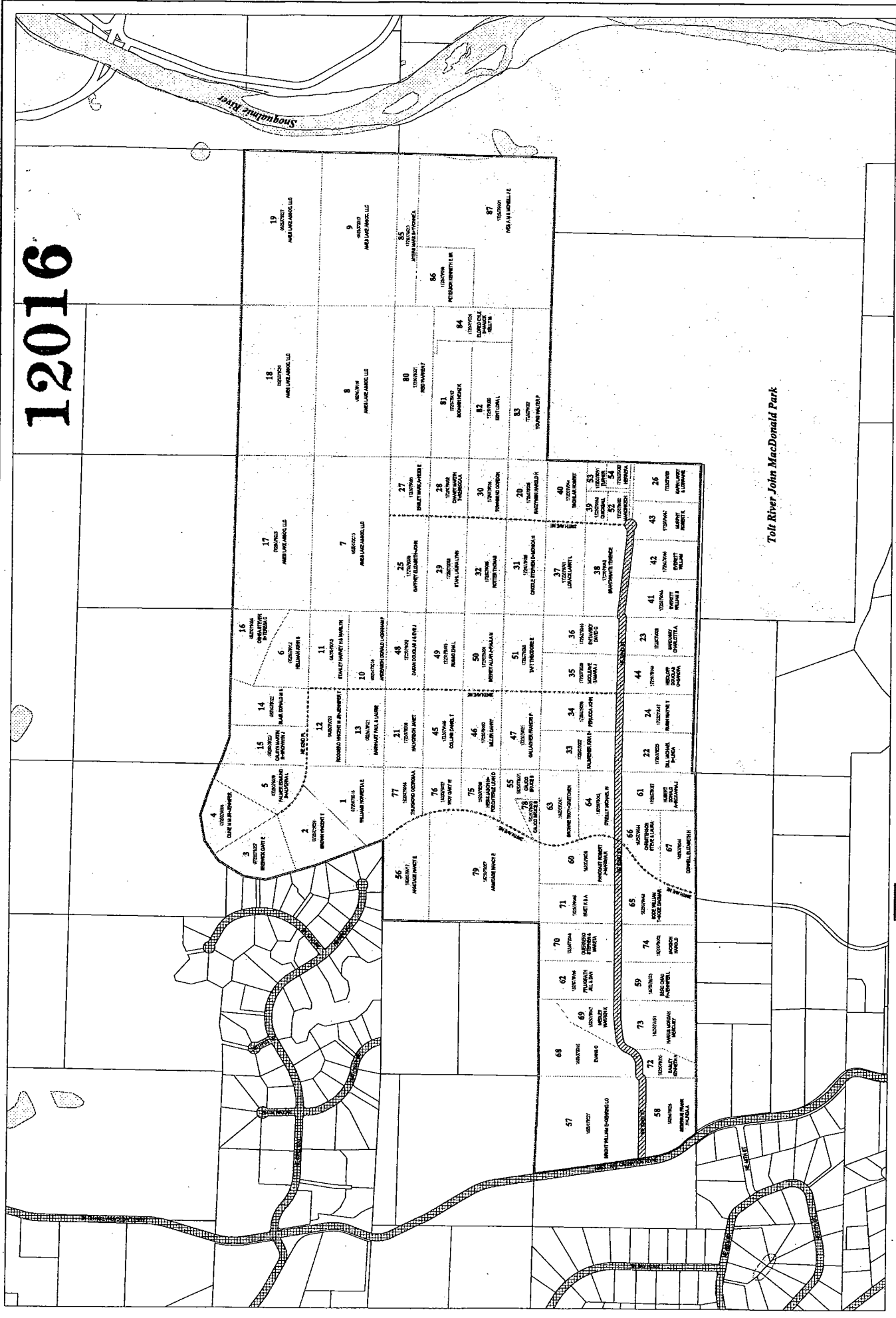


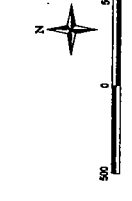
# 12016



# Proposed RID

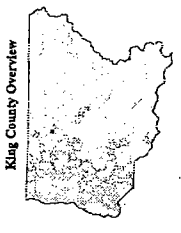
## For NE 52nd Street

- RID Assessment Area
  - Improvement Area
  - Existing Mainline Roads
  - Private Road Easements
  - Water Area
  - Parks
  - Incorporated Area
- Parcels proposed to be assessed \$ 5,299.62 each



**King County**

The information on this map has been compiled by King County GIS. King County GIS is not responsible for errors or omissions, whether of negligence or otherwise, arising from the use of the information. King County GIS and the King County Auditor's Office make no warranty, express or implied, in this information. This information is provided for informational purposes only. It is not intended to be used for legal or financial purposes. For more information, please contact King County GIS at 206-462-3900 or [www.kingcounty.gov/gis](http://www.kingcounty.gov/gis).



Toll River John MacDonald Park

King County Overview