



Eastside Rail Corridor Regional Trail Master Plan Project



WHERE ARE WE NOW?

WHERE DO WE WANT TO BE?

HOW DO WE GET THERE?

REFINEMENT & ADOPTION

SPRING 2014



FALL 2016



INVESTIGATION

CORRIDOR INVENTORY
CORRIDOR ANALYSIS
TRAIL CONNECTIVITY
MAJOR GAPS & CROSSINGS
PUBLIC EDUCATION

VISIONING

GOALS & OBJECTIVES
NEEDS ASSESSMENT
- Trail Connections
- Corridor Gaps
ENVIRONMENTAL STRATEGY
TRAIL DESIGN GUIDELINES
PUBLIC INVOLVEMENT

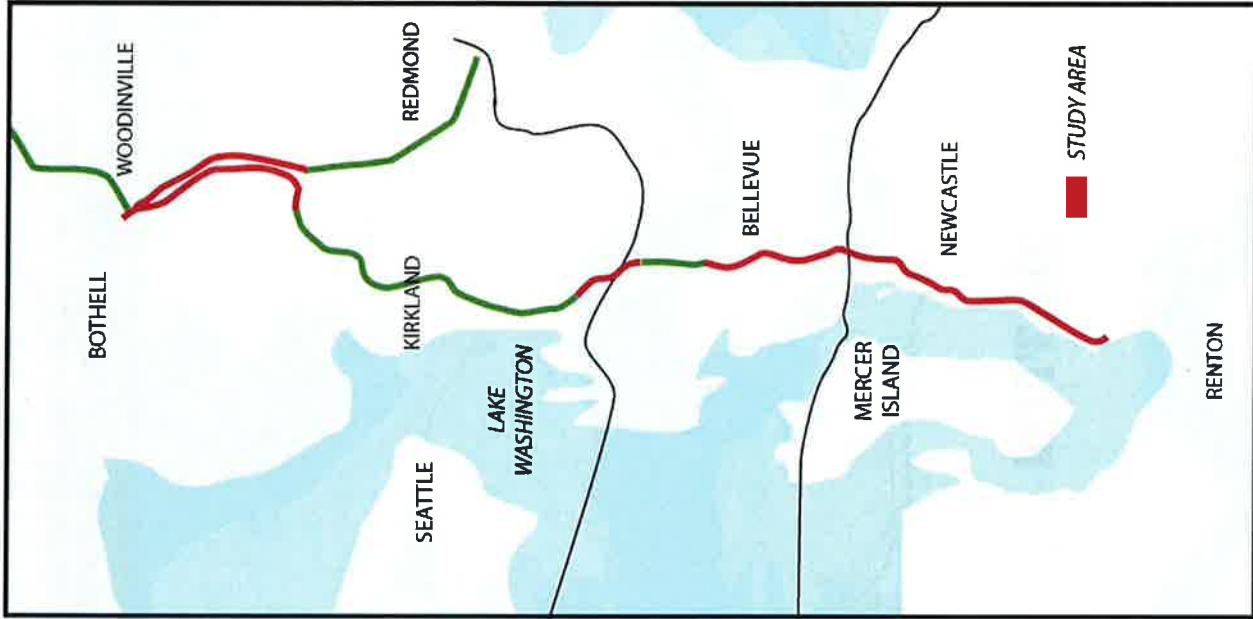
ANALYSIS

TRAIL ALTERNATIVES IDENTIFICATION
TRAIL ALTERNATIVES EVALUATION
SELECT PREFERRED
ENVIRONMENTAL PROCESS
PUBLIC INVOLVEMENT
PRIORITIZATION
IMPLEMENTATION PLAN

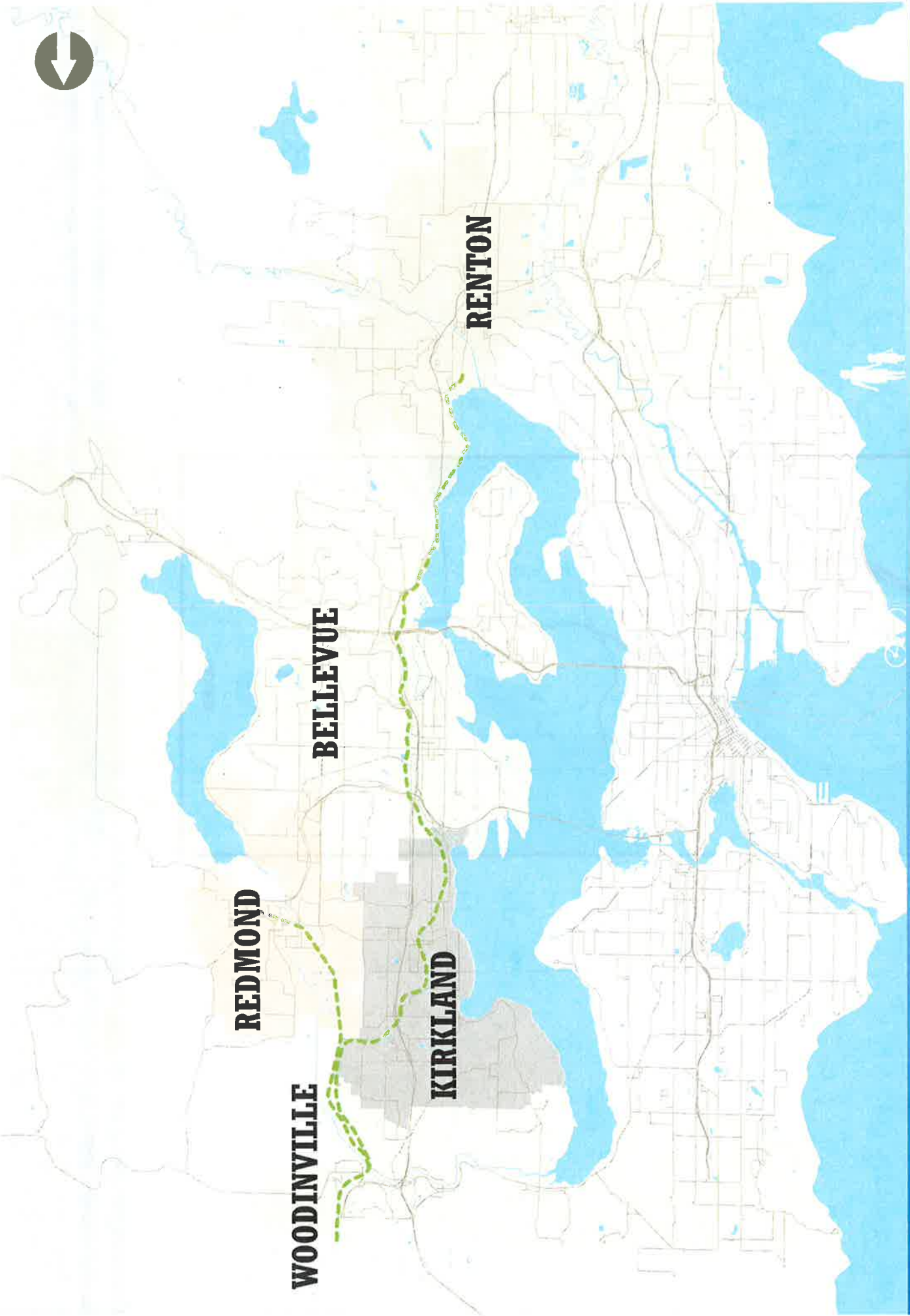
DELIVERABLES

TRAIL MASTER PLAN
ENVIRONMENTAL DOCUMENT
PUBLIC INVOLVEMENT

EASTSIDE RAIL CORRIDOR REGIONAL TRAIL MASTER PLAN PROJECT



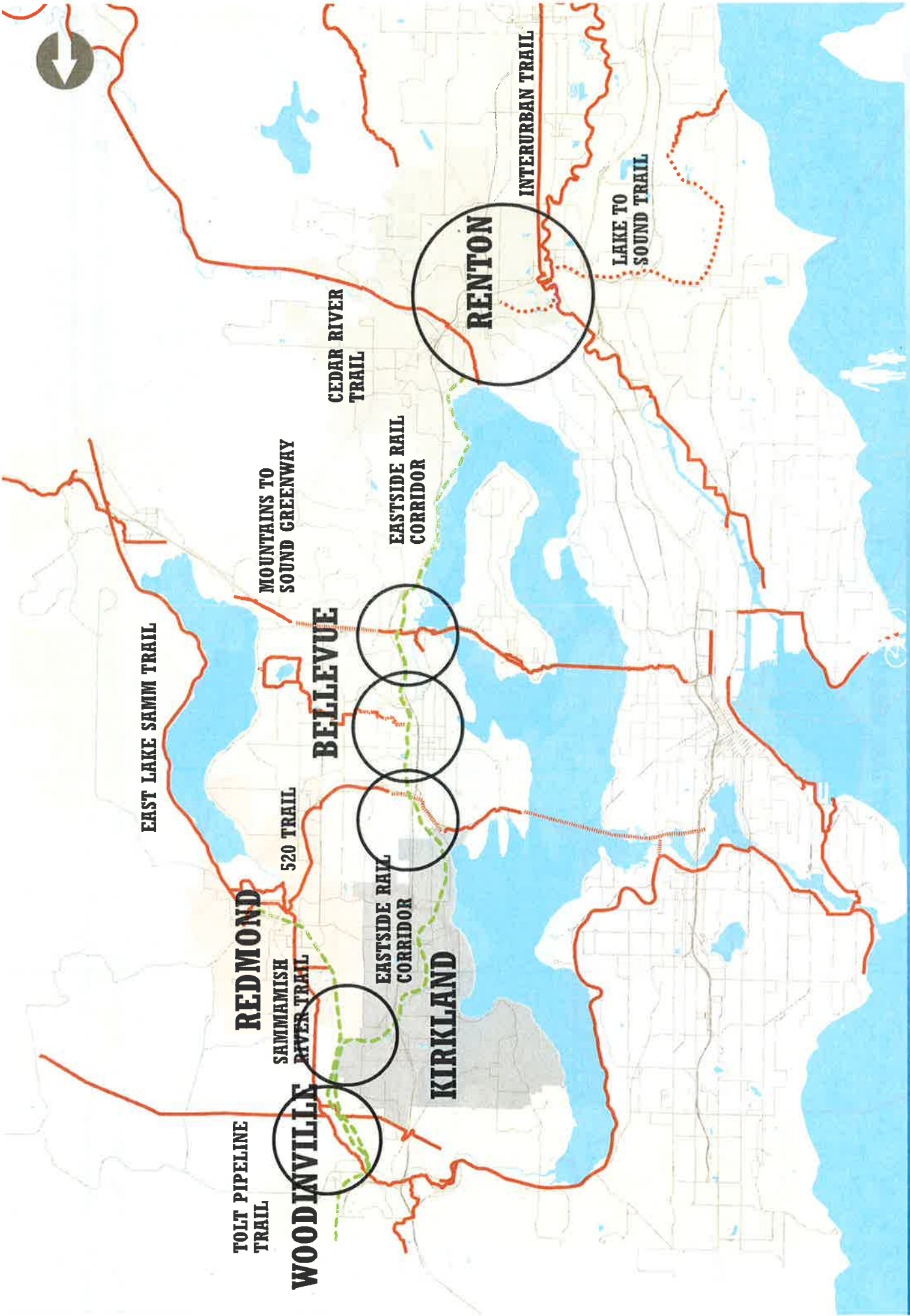
EASTSIDE RAIL CORRIDOR REGIONAL TRAIL MASTER PLAN PROJECT



EASTSIDE RAIL CORRIDOR REGIONAL TRAIL MASTER PLAN PROJECT



EASTSIDE RAIL CORRIDOR REGIONAL TRAIL MASTER PLAN PROJECT



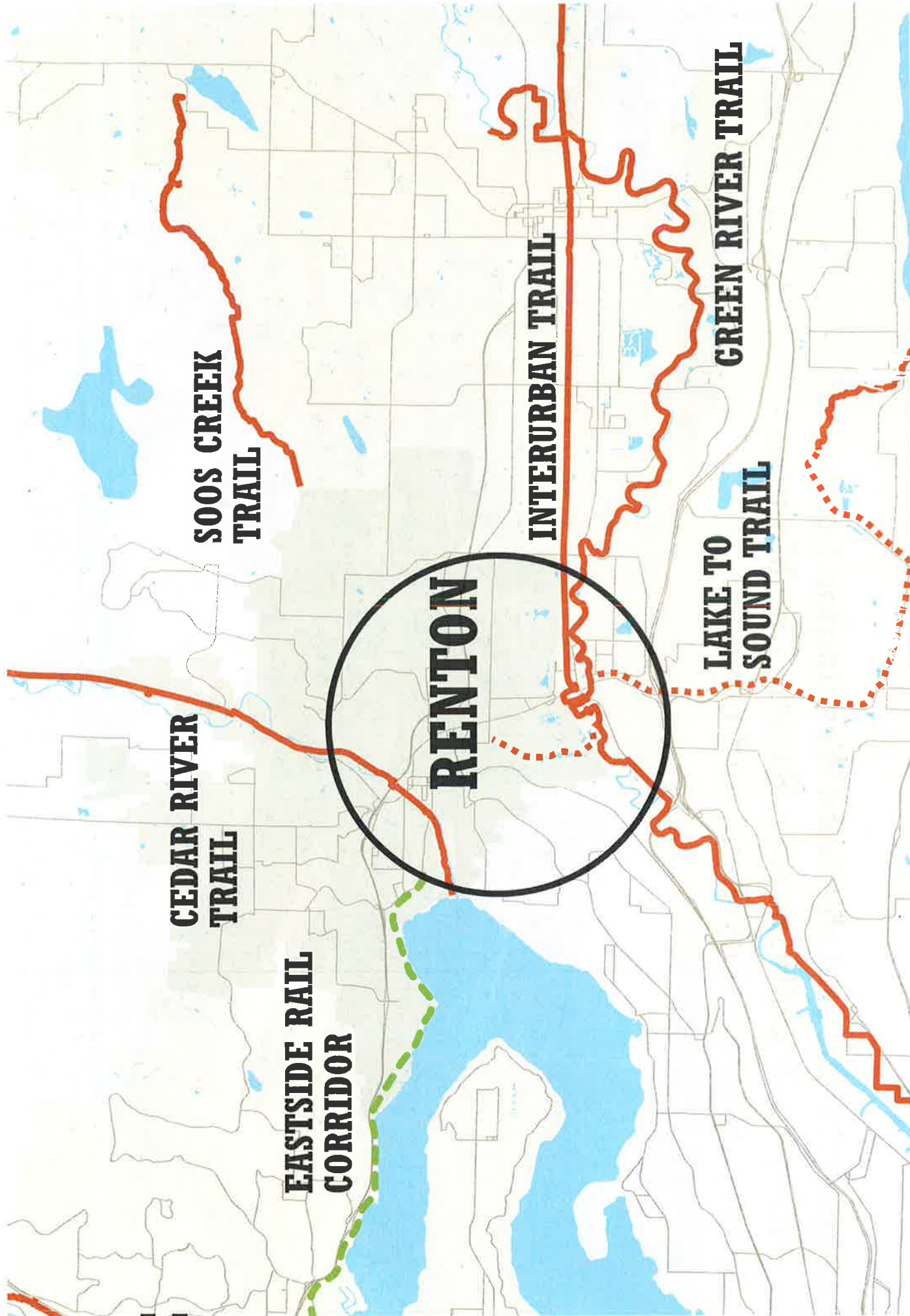
EASTSIDE RAIL CORRIDOR REGIONAL TRAIL MASTER PLAN PROJECT

SOUTH TRAIL HUB

RENTON

Regional trails and the Lake Washington Loop connect to Tukwila, Seatac, Burien, Des Moines, Seattle, Maple Valley, Kent, and beyond.





CEDAR RIVER TRAIL

SOOS CREEK TRAIL

RENTON

INTERURBAN TRAIL

LAKE TO SOUND TRAIL

GREEN RIVER TRAIL

EASTSIDE RAIL CORRIDOR

EASTSIDE RAIL CORRIDOR REGIONAL TRAIL MASTER PLAN PROJECT

I-90 TRAIL/MOUNTAINS TO SOUND GREENWAY

BELLEVUE

Cross-Lake connection to
Mercer Island & Seattle,
Eastside connection to Issaquah
and beyond.



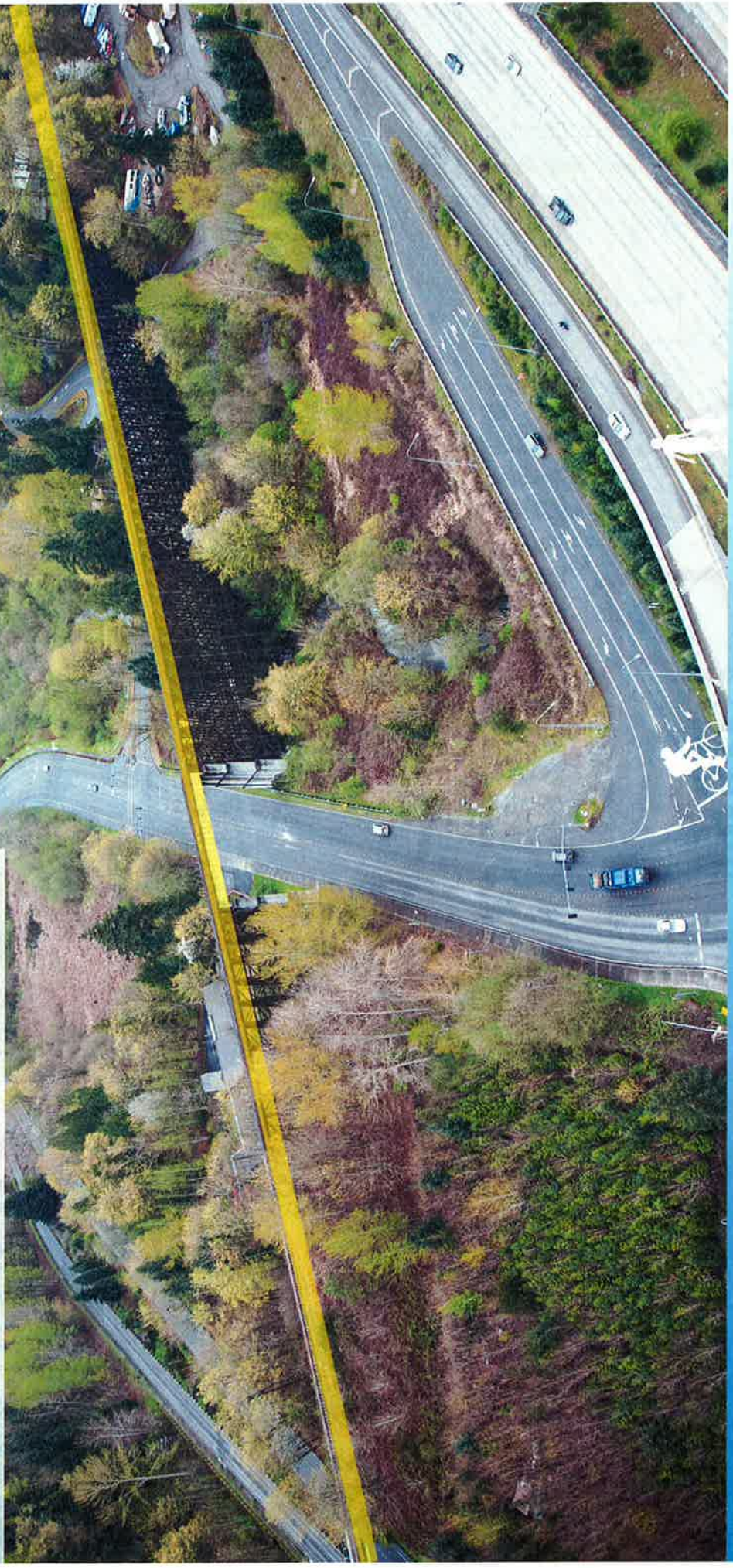
EASTSIDE RAIL CORRIDOR REGIONAL TRAIL MASTER PLAN PROJECT

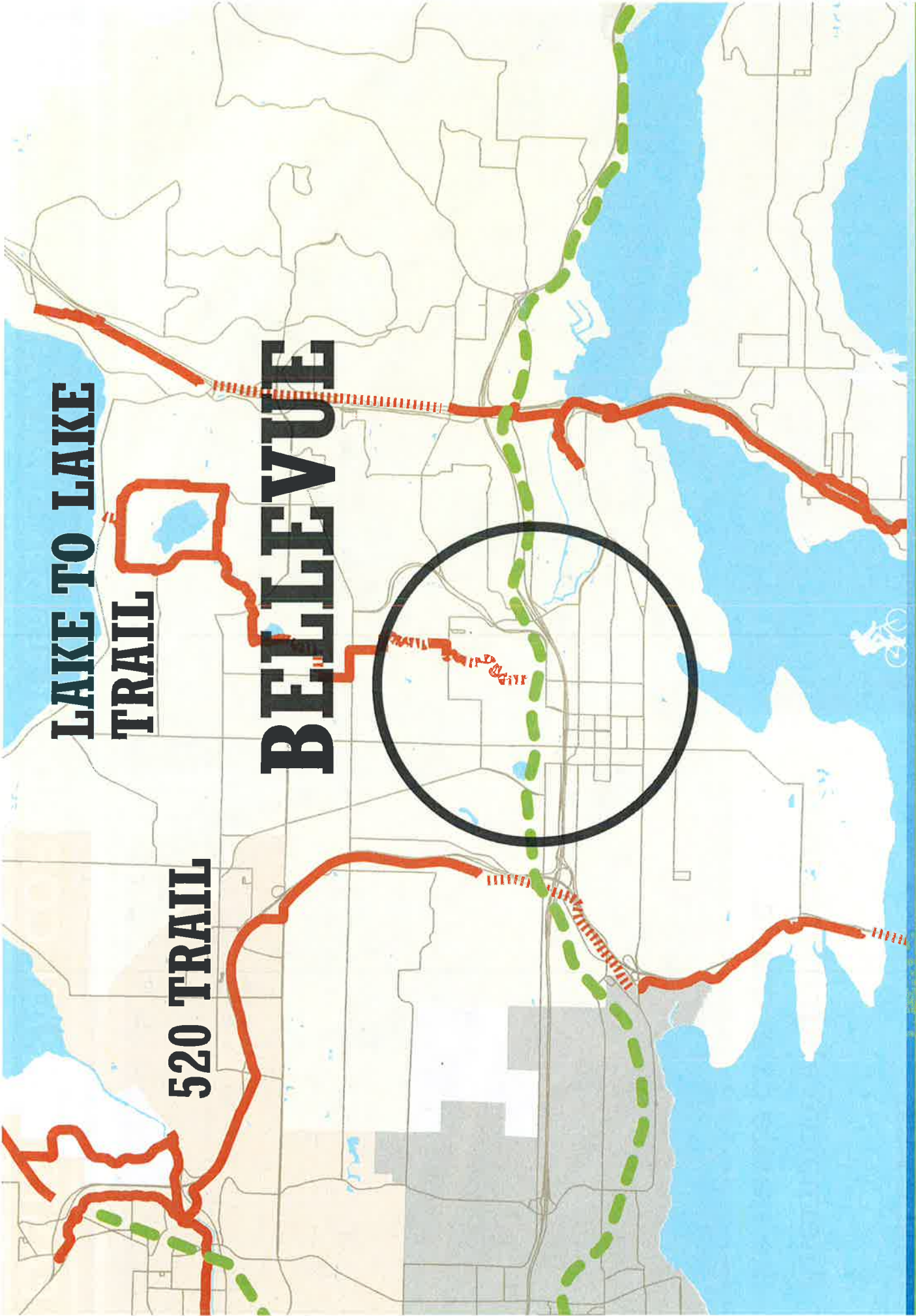
BELLEVUE MOUNTAINS TO SOUND GREENWAY EASTSIDE RAIL CORRIDOR



WILBURTON TRESTLE BELLEVUE

Alternative alignments using
the trestle or at grade.





**LAKE TO LAKE
TRAIL**

520 TRAIL

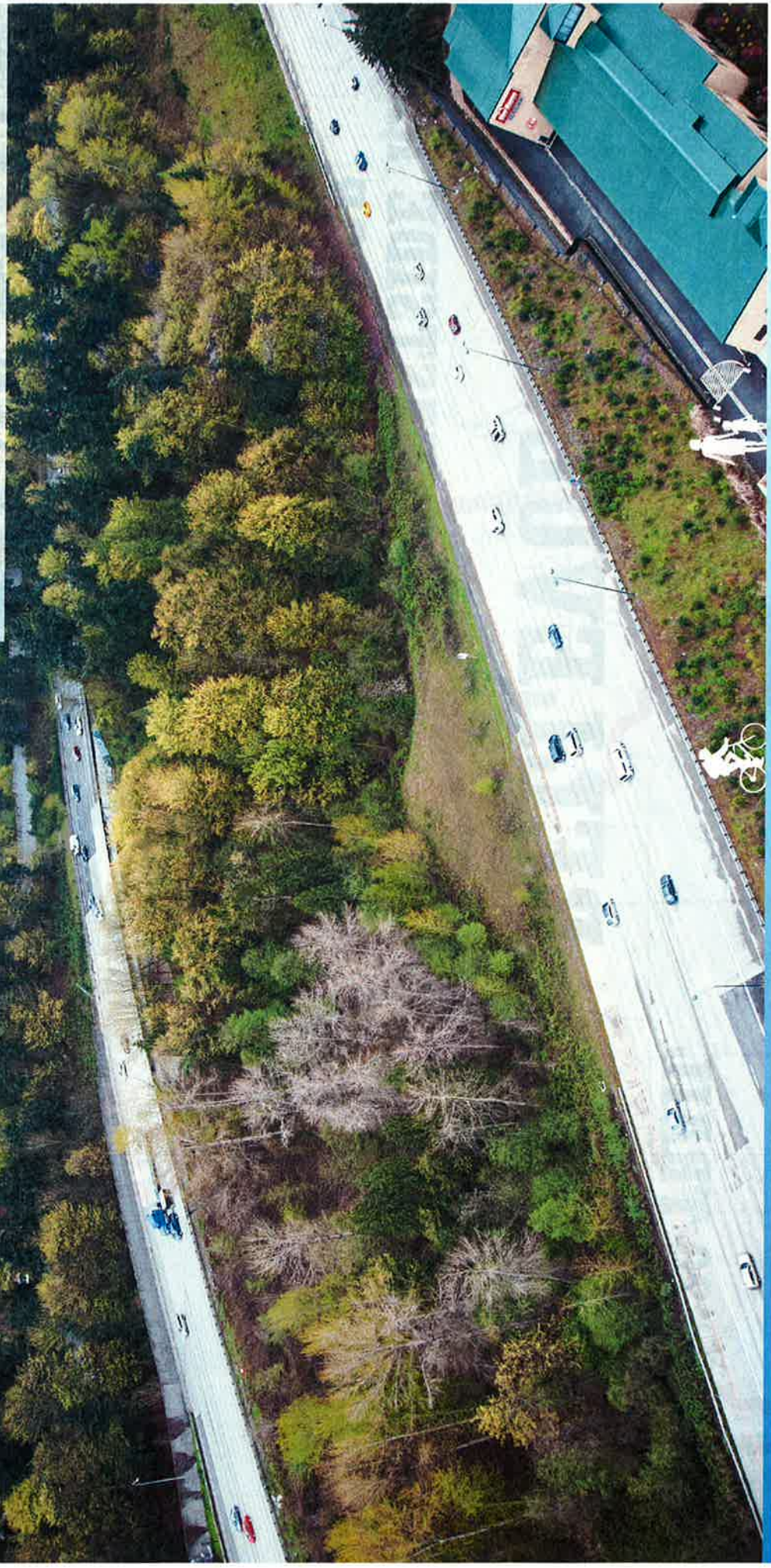
BELLEVUE



EASTSIDE RAIL CORRIDOR REGIONAL TRAIL MASTER PLAN PROJECT

WILBURTON GAP BELLEVUE

Reconnecting across I-405.



EASTSIDE RAIL CORRIDOR REGIONAL TRAIL MASTER PLAN PROJECT

520 TRAIL

BELLEVUE

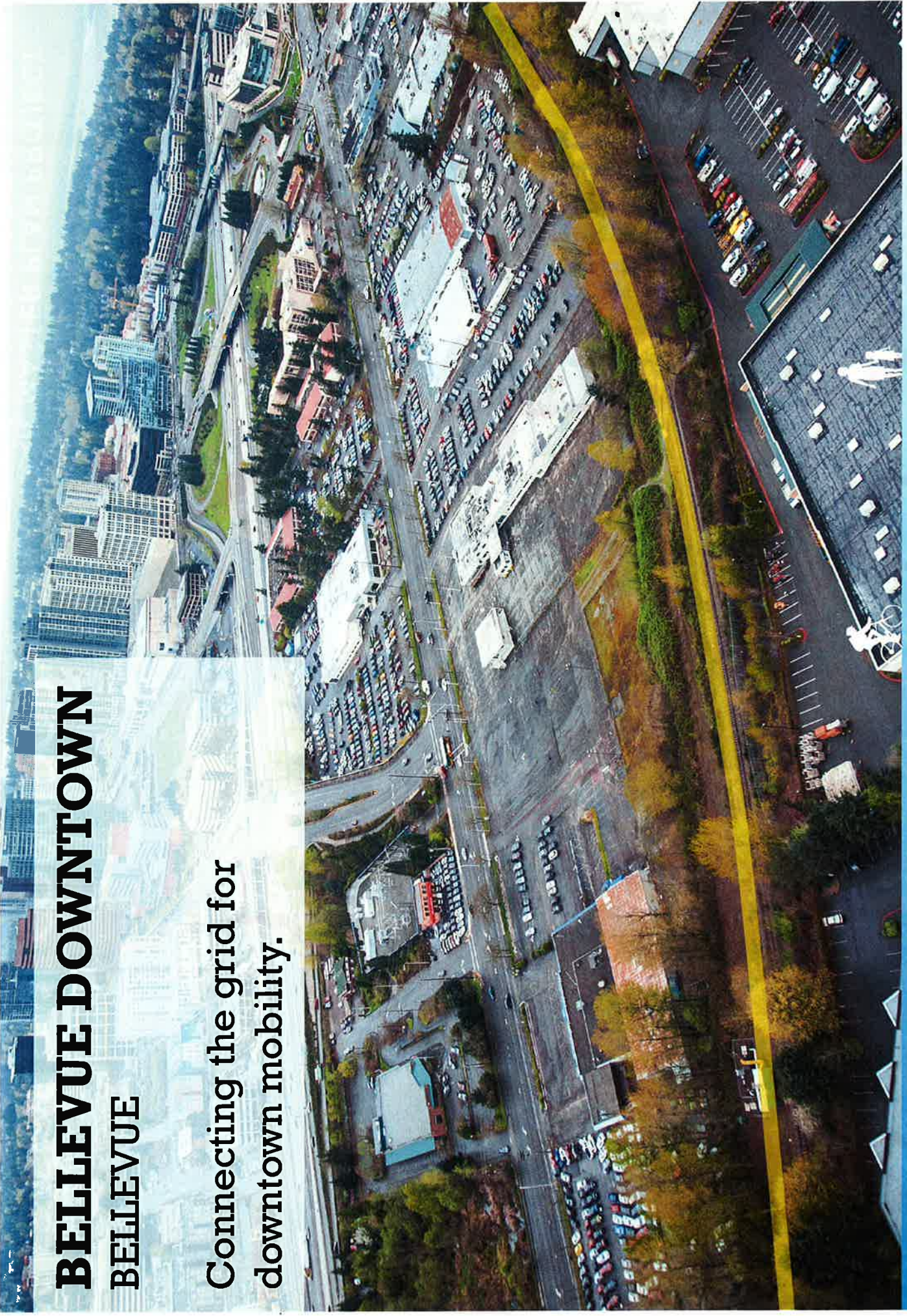
**EASTSIDE RAIL
CORRIDOR**



EASTSIDE RAIL CORRIDOR REGIONAL TRAIL MASTER PLAN PROJECT

BELLEVUE DOWNTOWN BELLEVUE

Connecting the grid for
downtown mobility.





**LAKE TO LAKE
TRAIL**

520 TRAIL

BELLEVUE

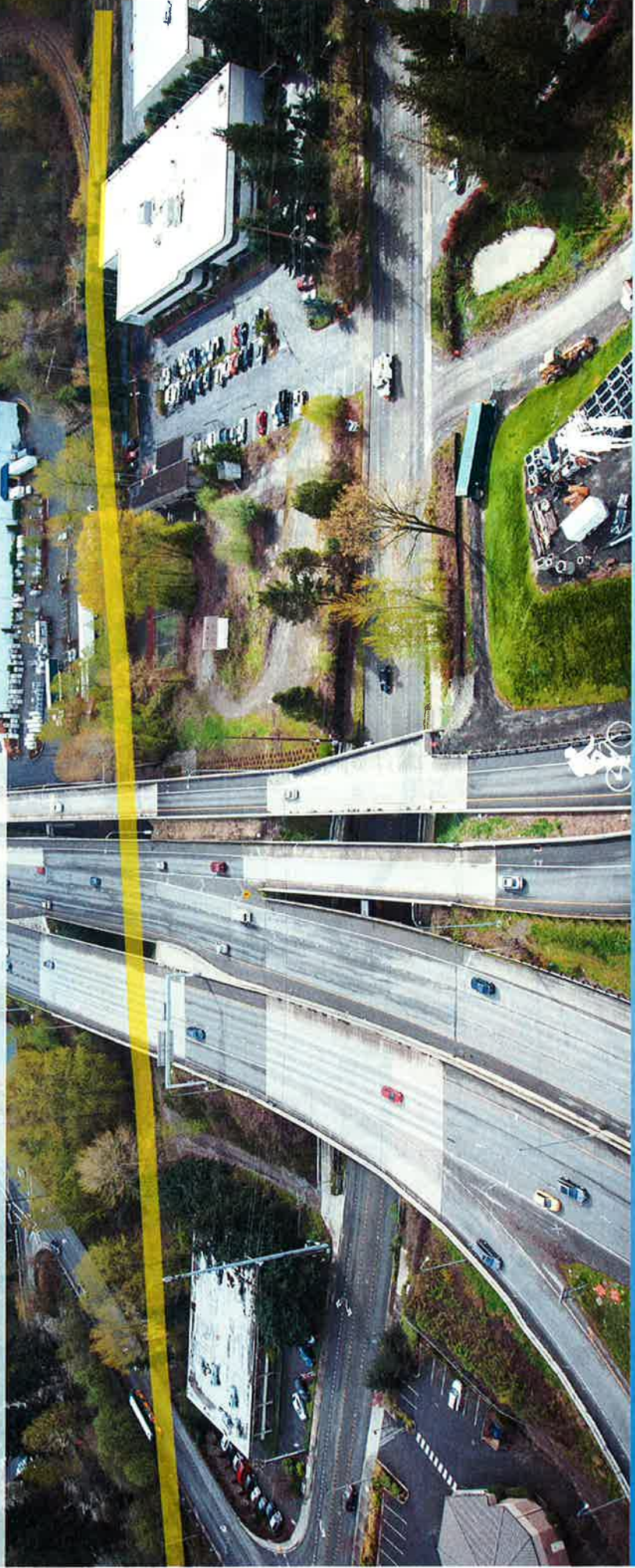
**EASTSIDE RAIL
CORRIDOR**

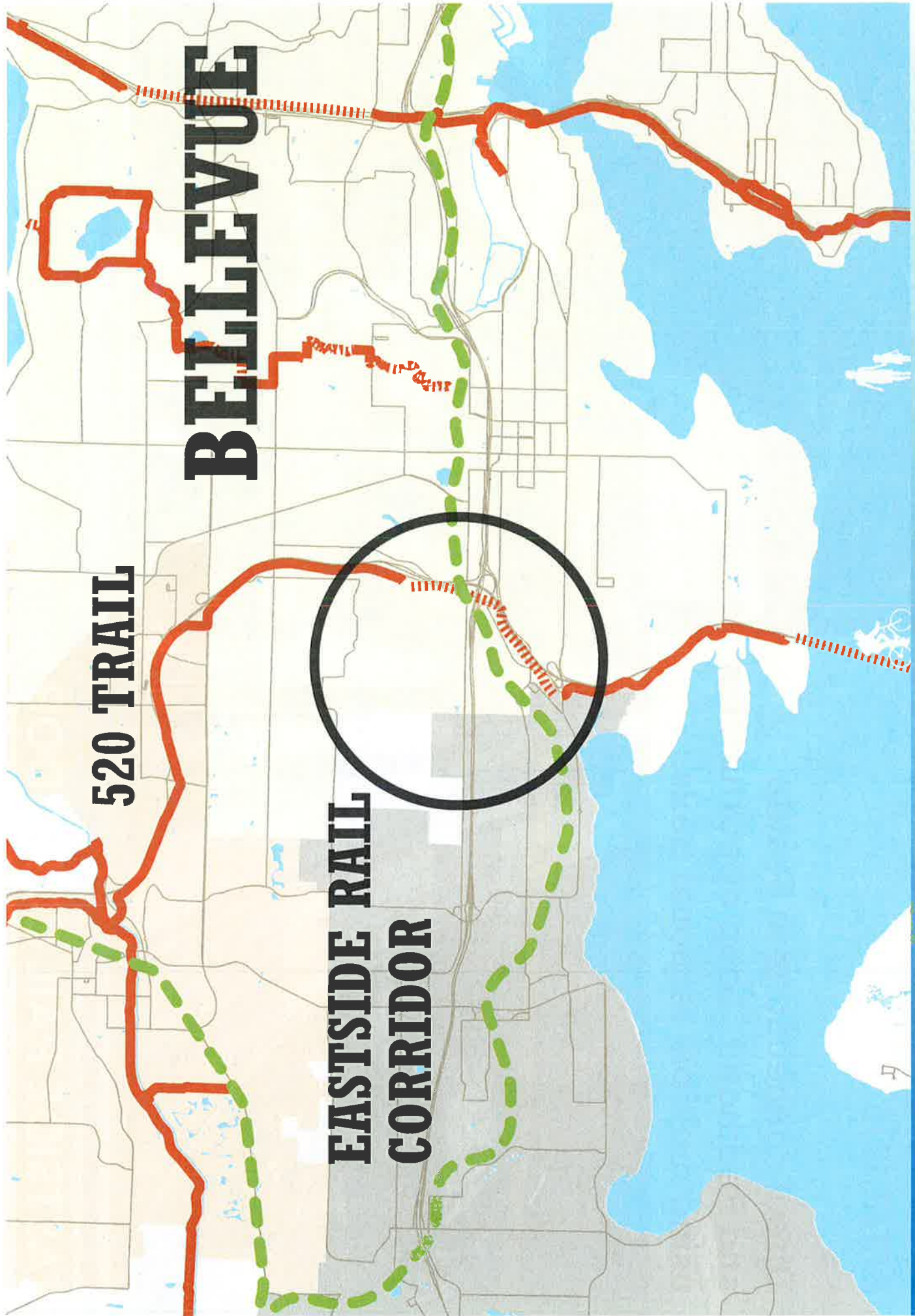
TRAIL SWINDLE

EASTSIDE RAIL CORRIDOR REGIONAL TRAIL MASTER PLAN PROJECT

SR 520 TRAIL BELLEVUE

**Direct connections to Seattle
and Redmond. Loop opportunities
using multiple regional trails.**





520 TRAIL

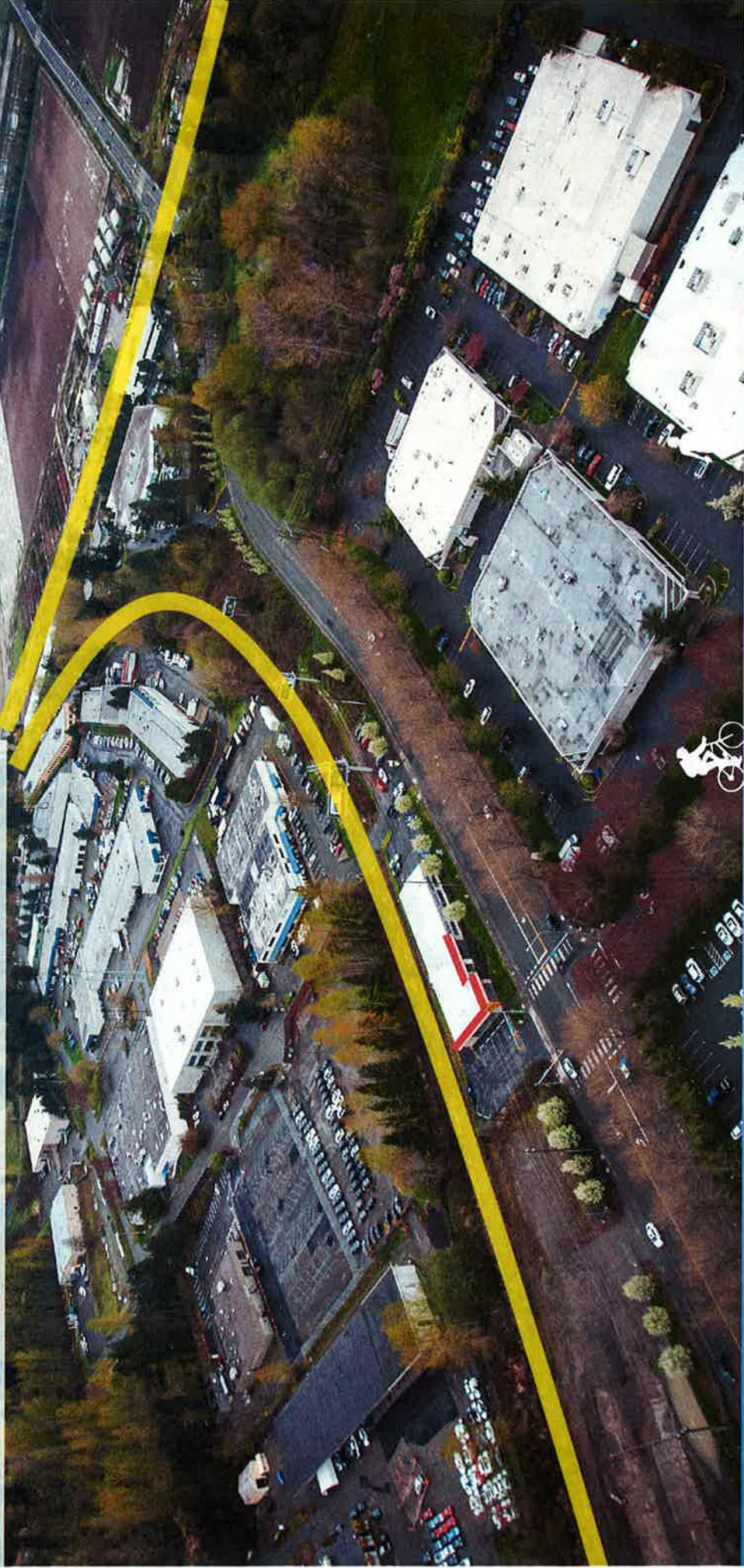
BELLEVUE

**EASTSIDE RAIL
CORRIDOR**

EASTSIDE RAIL CORRIDOR REGIONAL TRAIL MASTER PLAN PROJECT

REDMOND SPUR

Connection between Kirkland and Redmond. Loop opportunities through Redmond and Woodinville.



EASTSIDE RAIL CORRIDOR REGIONAL TRAIL MASTER PLAN PROJECT

**TOLT PIPELINE
TRAIL**

REDMOND

**SAMMAMISH
RIVER TRAIL**

**EASTSIDE RAIL
CORRIDOR**

KIRKLAND



An aerial photograph of a landscape featuring a golf course, a residential area, and a large forested area. A thick yellow line highlights a trail route that starts in the forest, curves around the golf course, and extends towards the residential area. In the bottom right corner, there are small icons of a person walking and a bicycle.

TOLT PIPELINE & SAMMAMISH RIVER TRAIL CONNECTIONS

East-west route provides connectivity with regional trail corridors.

**TOLT PIPELINE
TRAIL**

WOODINVILLE

REDMOND

**SAMMAMISH
RIVER TRAIL**

**EASTSIDE RAIL
CORRIDOR**

KIRKLAND

EASTSIDE RAIL CORRIDOR REGIONAL TRAIL MASTER PLAN PROJECT



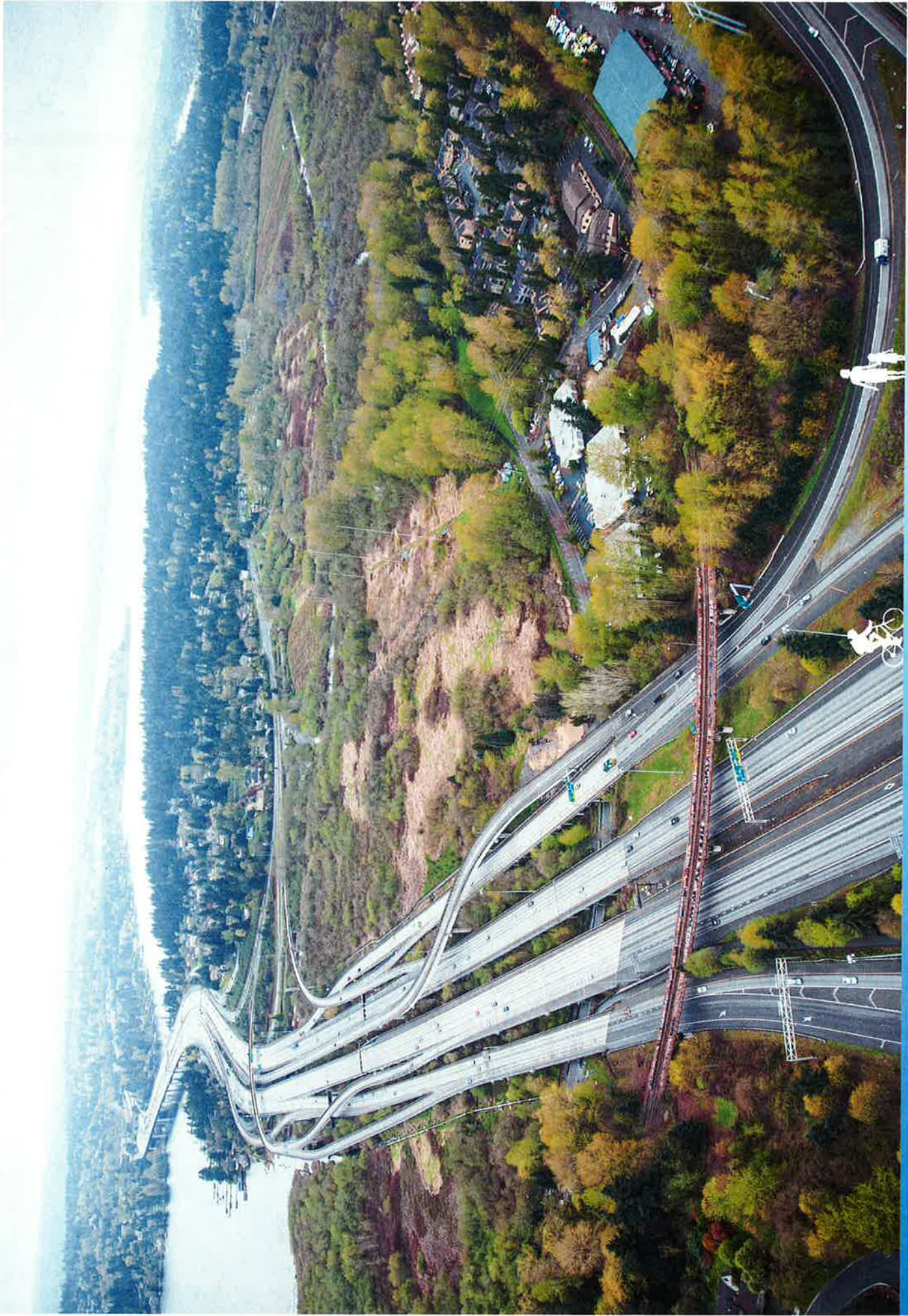


Photo: Getty Images

EASTSIDE RAIL CORRIDOR REGIONAL TRAIL MASTER PLAN PROJECT

