



KING COUNTY

1200 King County Courthouse
516 Third Avenue
Seattle, WA 98104

Signature Report

December 14, 2009

Motion 13108

Proposed No. 2009-0513.2

Sponsors Phillips

1 A MOTION approving the wastewater treatment division's
2 planning process to determine if, how, when, where and by
3 what funding mechanisms over the next thirty years King
4 County's existing reclaimed water program should expand.

5 WHEREAS, King County is committed to creating resources from the byproducts
6 of the wastewater treatment process, and

7 WHEREAS, the wastewater treatment division currently recycles one hundred
8 percent of the biosolids produced at its South and West Point treatment plants, uses about
9 seventy percent of the digester gas produced at these plants to generate heat, electricity,
10 and natural gas, and recycles approximately one percent or two hundred million gallons
11 per year of the average amount of wastewater processed each day at the county's
12 wastewater treatment plants, and

13 WHEREAS, the Regional Wastewater Services Plan, as codified in K.C.C.
14 28.86.010 and 28.86.040 through 28.86.150, includes water reuse policies that are
15 intended to guide the county in continuing to develop its program to produce reclaimed
16 water and encourages the county to investigate the use of reclaimed water to enhance or
17 maintain fish runs, supply additional water for the region's nonpotable uses, preserve
18 environmental and aesthetic values, and defer the need to develop new potable water
19 supply projects, and

20 WHEREAS, the wastewater treatment division has been producing, using, and
21 distributing reclaimed water at South plant and producing and using reclaimed water at
22 West Point plant for more than a decade, and

23 WHEREAS, the county made decisions to expand the system to include the
24 Carnation plant and Brightwater backbone, and

25 WHEREAS, the 2008 King County Budget Ordinance, Ordinance 15975,
26 authorized funding in the wastewater treatment capital program to develop a reclaimed
27 water comprehensive plan, and

28 WHEREAS, the purpose of the reclaimed water comprehensive plan is to
29 determine if it makes sense to expand the existing reclaimed water system and if so, how,
30 when, where and by what funding mechanisms over the next thirty years King County's
31 existing reclaimed water program should expand, and

32 WHEREAS, conducting the planning process now will help the county continue
33 to effectively manage its wastewater utility into the future, and

34 WHEREAS, from July 2008 through April 2009, the wastewater treatment
35 division held over thirty meetings and a regional workshop with representatives from
36 interested parties, including tribes, the metropolitan water pollution abatement advisory
37 committee, cities, water and sewer districts, environmental groups, business associations
38 and regulatory agencies to solicit input on the process to develop a reclaimed water
39 comprehensive plan, components of the plan and a regional participation strategy to
40 involve interested parties and individuals in the planning process, and

41 WHEREAS, based on input received from interested parties and individuals, the
42 wastewater treatment division has prepared a planning process depicted in Attachment A

43 to this motion to determine if, how, when, where, and by what funding mechanisms over
44 the next thirty years King County's existing reclaimed water program should expand, and

45 WHEREAS, the planning process is designed to engage a broad range of people,
46 ensure an open and transparent planning process, and provide assurance that there is no
47 preconceived outcome by allowing for flexibility in the process, including check-in
48 points to assess next steps based on results of previous steps and King County council
49 oversight and action at key decision points;

50 NOW, THEREFORE, BE IT MOVED by the Council of King County:

51 The planning process to determine if, how, when, where and by what funding

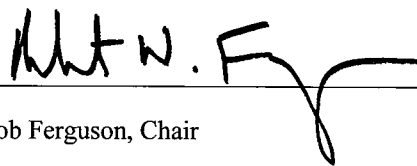
52

- 53 mechanisms over the next thirty years King County's existing reclaimed water program
54 should expand, Attachment A to this motion, is hereby approved.

Motion 13108 was introduced on 8/31/2009 and passed by the Metropolitan King County Council on 12/14/2009, by the following vote:

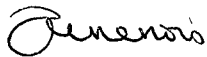
Yes: 7 - Mr. Phillips, Mr. von Reichbauer, Mr. Gossett, Ms. Hague,
Ms. Patterson, Mr. Ferguson and Mr. Dunn
No: 0
Excused: 1 - Ms. Lambert

KING COUNTY COUNCIL
KING COUNTY, WASHINGTON



Bob Ferguson, Chair

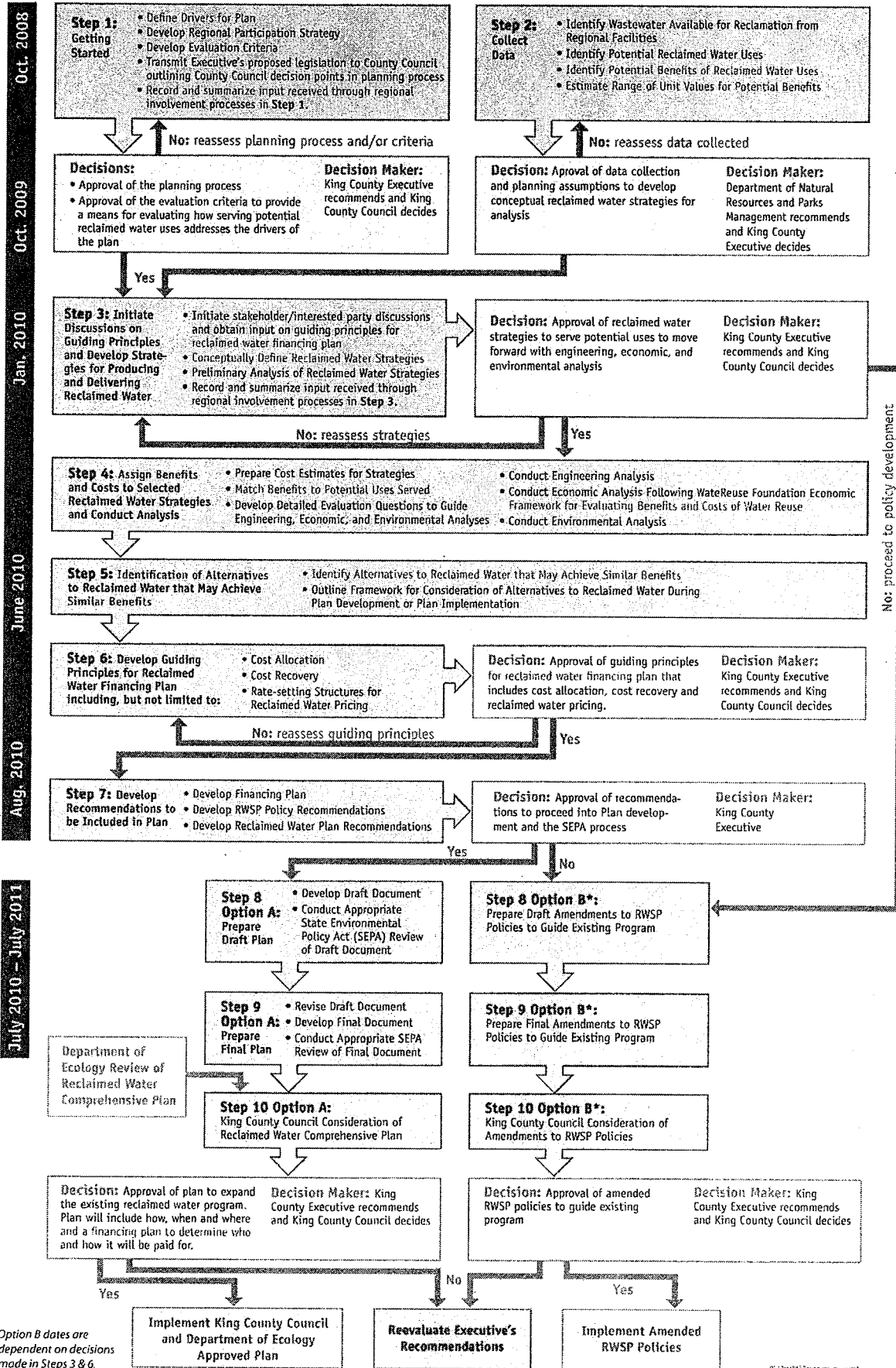
ATTEST:



Anne Noris, Clerk of the Council

Attachments: A. Overview of Planning Process - Revised 12/02/09

STEPS, TASKS, DECISION POINTS IN PLANNING PROCESS TO DETERMINE IF, HOW, WHEN, WHERE, AND BY WHAT FUNDING MECHANISMS KING COUNTY'S EXISTING RECLAIMED WATER PROGRAM SHOULD EXPAND



*Option B dates are dependent on decisions made in Steps 3 & 6.