

Duwamish Waterway Park Concept Design

Community Vision Scrapbook



September 30, 2016

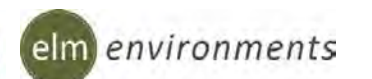




Table of Contents

EXECUTIVE SUMMARY.....	3
PROJECT CONTEXT	4
PROJECT SITE	6
COMMUNITY ENGAGEMENT	8
WORKSHOP 1 SUMMARY.....	10
GOALS & PROGRAM.....	12
PRELIMINARY ALTERNATIVES AND REVIEW.....	12
FINAL CONCEPT PLAN.....	22
BUDGET AND FUNDING.....	26
PHASING AND IMPLEMENTATION.....	27

Executive Summary

Welcome to the Duwamish Waterway Park Community Scrapbook. This document summarizes a community lead project to improve and protect Duwamish Waterway Park. Initiated by the Friends of Duwamish Waterway Park, an inspired group of friends and neighbors with a desire to improve their community's green space, and funded by a "Small and Simple" grant from Seattle Department of Neighborhoods and Seattle Parks Foundation, this scrapbook illustrates the outreach and exploration that has distilled

this community's needs and interests into goals, a program, and a design for Duwamish Waterway Park. What follows is a summary of the outreach and design process employed, an overview of the park site and its context, preliminary alternatives investigated, and a final concept plan illustrated below and further described later in this document.





Project Context

Location

One of Seattle's few riverfront parks, Duwamish Waterway Park sits at 7900 10th Avenue South in Seattle WA, on the southern bank of the Duwamish Waterway in the culturally diverse and industrialized South Park Neighborhood.

Demographics

Rich in cultural diversity, South Park is a community of approximately 4,000 residents with diverse backgrounds. Based on 2005-2009 survey data, almost one half of this vibrant community's residents are foreign born, and 2010 Census Data indicates the following cultural distribution:

Group	Number of Residents	% of Population
Hispanic	1,457	37.3%
White	1,266	32.4%
Black	344	8.8%
Native American	46	1.2%
Asian	671	17.2%
Other	7	0.2%
Multiple race	115	1.2%
Under 18	968	24.8%

Source: AllAboutSouthPark.com (an excellent source for additional demographic information)

History

South Park and the Duwamish Waterway have witnessed a storied history since the last ice age. Originally an estuary rich in terrestrial and aquatic life where the Green River met Elliott Bay, the region saw a dramatic shift when the river was channelized and industrialized into the Duwamish Waterway in the early 1900's. Since this time, South Park has grown as Seattle's industrial neighborhood. With the rise of industry, came the settlement of people from diverse nations and cultures forming the community seen today.

The history of South Park and the Duwamish Waterway are summarized in the South Park Green Space Vision Plan and therefore need not be reiterated here. What is most relevant is that being South Park's largest and most centrally located riverfront open space, Duwamish Waterway Park is the ideal place to illustrate this community's history and tell its stories. This park has the opportunity to be a starting point for the tale of South Park's history, a story which needs to weave its way into other parks, streetscapes, and open spaces.

Ecology

An Environmental Renovation of the Duwamish Waterway is underway. Once free flowing, lush and green, then channelized, polluted and industrialized, the waterway has been declared a Superfund clean up site by the US Environmental Protection Agency. This park project comes at a crucial time, to serve witness to the renovation of the Duwamish Waterway, and holds opportunities to participate in this rebirth.

This design exploration will examine minimizing recreation's impact on the waterway's health, striving to reintroduce vegetation and habitat, cleanse and manage surface water flows, and educate visitors about the symbiotic harmony between the natural and built environments in South Park.



South Park Public Open Spaces





Project Site

Location

Duwamish Waterway Park lies on the southern bank of the Duwamish Waterway in the South Park Neighborhood at the intersection of 10th Avenue South and S Elmgrove Street. The park encompasses two parcels totaling approximately 1.3 acres of land area with a portion of the parcel extending into the waterway. Note that due to changes in water level, the land area is approximate.

The park's land area consists of open lawn surrounded by a variety of mature trees including Douglas fir and maple with shrub understory. Many of the plant beds include irrigation. The western water's edge consists of a fine substrate beach which is partially vegetated with American dune grass, and the eastern water's edge consists of rip rap rock armoring. A crushed rock path, benches, picnic tables, grills and two small play features have been installed in recent years. Street parking is available adjacent to the park, and no parking is provided in the park.

Current Uses

The park is a neighborhood park and is currently used for informal active recreation such as running and playing soccer or other games. Passive recreation includes dog walking, sitting, fishing, and picnicking. As one of Seattle's few public river access points, Duwamish Waterway Park is frequently used to launch hand carried boats and the Seattle Rowing Club maintains a boat storage facility on S. Elmgrove Street to the east of the park. The existing path along the east edge of the park is used to transport boats from the storage facility to the beach.

Duwamish Waterway Park is host to several annual events including:

Pride Picnic

Lucha Libre

Duwamish River Festival

Related Plans & Efforts

Much passion and effort have been invested in planning and improving South Park and the Duwamish Waterway. The following plans and efforts have been consulted and influence the design direction of this project:

Seattle Parks Recreation Development Plan 2011

South Park Action Plan 2012

South Park Green Space Vision Plan 2014

Duwamish Revealed (www.duwamishrevealed.com)

Related Plans Continued

Lower Duwamish Waterway Superfund Site EPA Final Record of Decision

Draft Seattle Comprehensive Plan Parks and Open Space 2015

An Assessment of Gaps in Seattle's Open Space Network 2011

Applicable Regulations

Regulations investigated in this design process include:

City of Seattle Municipal Code

Zoning: Industrial Buffer

Environmentally Critical Areas: The site is located in a Liquefaction Zone, Wildlife Preservation Area, Riparian Corridor, and Flood Prone Area (the beach area is located within a 100-year FEMA floodplain)

City of Seattle Shoreline Master Program

The site is located within a Shoreline District and a shoreline buffer extends 200' from the ordinary high water mark.

City of Seattle Building Code

King County Surface Water Design Manual

Americans with Disabilities Act

Although not a specific regulation, design development should recognize Washington Department of Ecology Sea Level Rise Projections <http://www.ecy.wa.gov/climatechange/2012ccrs/coasts.htm>

Permits

The proposed project will likely require the following permits:

Master Use Permit - The proposed park improvements will likely require a City of Seattle Master Use Permit and State Environmental Policy Act (SEPA) checklist as required by the Seattle Shoreline Master Program.

Stormwater Permit - Because the project disturbs over 750 sf it will require City of Seattle Drainage Review which includes compliance with the National Pollutant Discharge Elimination System (NPDES) and

Building Permit (includes grading and tree removal)

Because improvements are limited to upland areas of the park above the ordinary high water mark (OHWM), permitting with state and federal agencies under a Joint Aquatic Resources Permit Application (JARPA) should not be required. If beach improvements extend below the OHWM JARPA permitting will be necessary.



Duwamish Waterway Park





Community Engagement

Outreach Methodology

A community led effort, the design of Duwamish Waterway Park was a hands-on, community activity resulting in a place that reflects the needs, wishes and character of the South Park Community, while empowering residents to shape their neighborhood, while fostering introductions, friendships, and relationships through the design process.

This project's outreach approach was designed to be in compliance with the Seattle Parks "Inclusive Outreach and Public Engagement Guide," the goals of Seattle Department of Neighborhoods "Small and Simple" grant, and the Seattle Parks Foundation's mission to support community-led public space initiatives.

To engage a broad spectrum of community members, outreach was led by a steering committee of residents who engaged with South Park residents and community groups through three channels:

Design workshops

Online outreach

Offline outreach

Workshops

The core of this effort were three interactive hands-on, cut paste and draw design workshops, being held in the park.

Workshop 1 (July 2016) – Park Assessment and Programming, Community Character and Identity

Workshop 2 (August 2016) – Preliminary Alternatives

Workshop 3 (September 2016) – Final Concept Plan

Workshops were announced via a postcard mailing, flyers posted in the park and other community locations, and on the project's online sources. Flyers were translated into Spanish and Vietnamese languages, and Spanish translation was included in the Workshop 1 dialogue.

In addition to the Design Workshops, Steering Committee members spoke informally about the park with community members while participating in other events:

Lucha Libre
National Night Out South Park Putz
Duwamish River Festival
South Park Fiestas Patrias

Workshop announcements were sent by email to businesses with close proximity to the site including:

Seattle Freight Services Inc
Smith-Berger Marine
United Site Services of Seattle

Online Outreach

Project updates and opportunities to comment were hosted on the South Park Greenspaces Coalition Facebook Page with links to the project provided on other webpages including:

Seattleparksfoundation.org
 Seattle.gov/parks
 AllAboutSouthPark.com

Additionally the Steering Committee used a Pinterest Page to collect and comment on images representing the South Park community character and possible elements for the park.

Offline Outreach

Online efforts were duplicated in an offline fashion by posting meeting flyers and project updates at locations throughout South Park including:

South Park Neighborhood Center
 Environmental Coalition of South Seattle
 Marra Farm
 SeaMar Community Health Center
 Seattle Library South Park Branch
 Duwamish Waterway Park

Duwamish Waterway Park Design Workshops
 Help create the future of our park...

South Park Area Redevelopment Committee and the Friends of Duwamish Waterway Park have an exciting opportunity to design improvements for Duwamish Waterway Park and encourage your participation in three public workshops:

Workshop 1 Vision and Ideas - July 18, 2016, 6:00pm
 Workshop 2 Preliminary Options - August 17, 2016 6:00pm
 Workshop 3 Final Park Concept - September 14, 2016 6:00pm

Meetings will be held at Duwamish Waterway Park
 7900 10th Avenue S.
 In the event of rain, meetings will be moved to the South Park Neighborhood Center 8201 10th Ave S.

Please bring digital or printed images that show the character of South Park and our community.

To learn how you can be part of this exciting project, contact Lake Helenkamp Friends of Duwamish Park, 253-353-0295

For more information about this Seattle Parks & Recreation project contact:
 Pamela Klement, Neighborhood Matching Fund Liaison
 (206) 684-7558
 pamela.klement@seattle.gov

Logos for Seattle Parks Foundation, Seattle Neighborhoods, and other partners are included.



South Park Green Spaces Coalition added an event.
 July 13 at 3:21pm · 🌐

Duwamish Waterway Park Design Workshops
 Help create the future of our park...

JUL 18
 Mon 6 PM · Duwamish Waterway Park 7900 10th...
 9 people interested

Community

www.facebook.com/SouthParkGreenSpacesCoalition.com

South Park

Grid of images including:

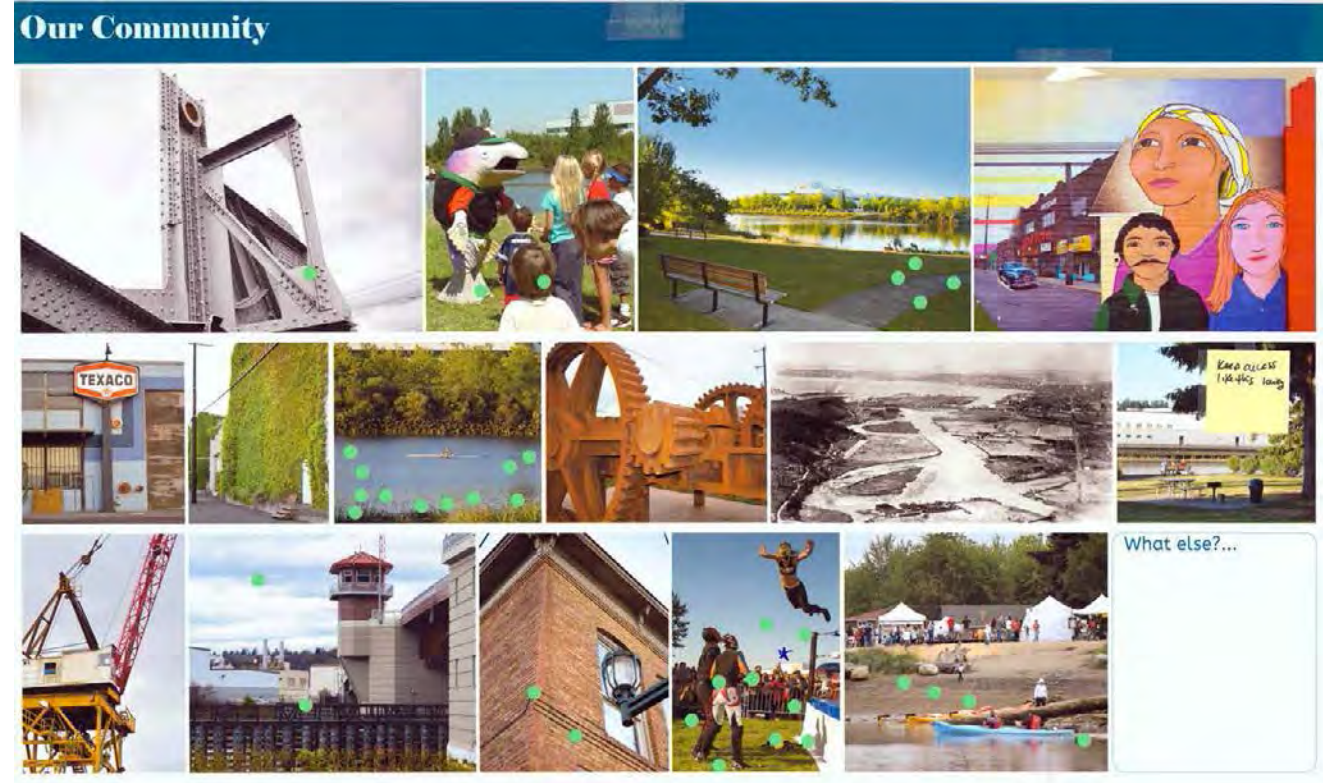
- balcony - Google Search
- terrace - Google Search
- Riverside Park South Waterfront | New York | Thomas Railway Association
- Gravel and timber walk at Boreal Skatepark Park
- The CityClub by Shook Landscape Architecture, via Behance
- corbin landscape - Google Search
- suburb - Google Search
- Landscapes architect Paul Sangha has created the SHOCKERS PARK, a colorful sculpture designed to provide a solution to landscape erosion for a waterfront property in Vancouver, Canada. -The LA Team

www.Pinterest.com



Design Workshop 1

An exploration into the character of South Park and the recreational interests and needs of the community, this open-house gathering in the park focused on reviewing past plans and images of possible park activities and improvements. Participants noted their ideas, sketched, and cast their votes by affixing dot stickers to preferred images.



- What is important...
- Open lawn for play and events
 - A place to play
 - Views and access to the river
 - Ability to launch hand carried boats
 - Trees
 - A healthy environment
 - Safety
 - Exercise
 - Seating, lighting and signs
 - Lucha Libre!

or → PASSIVE

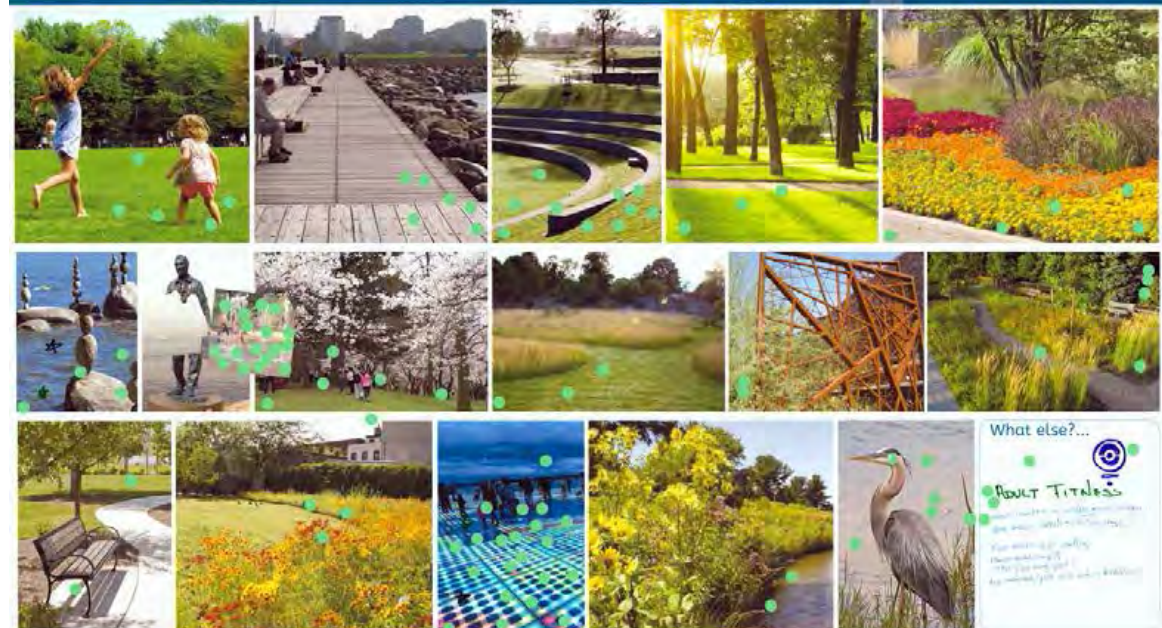


What we would like....

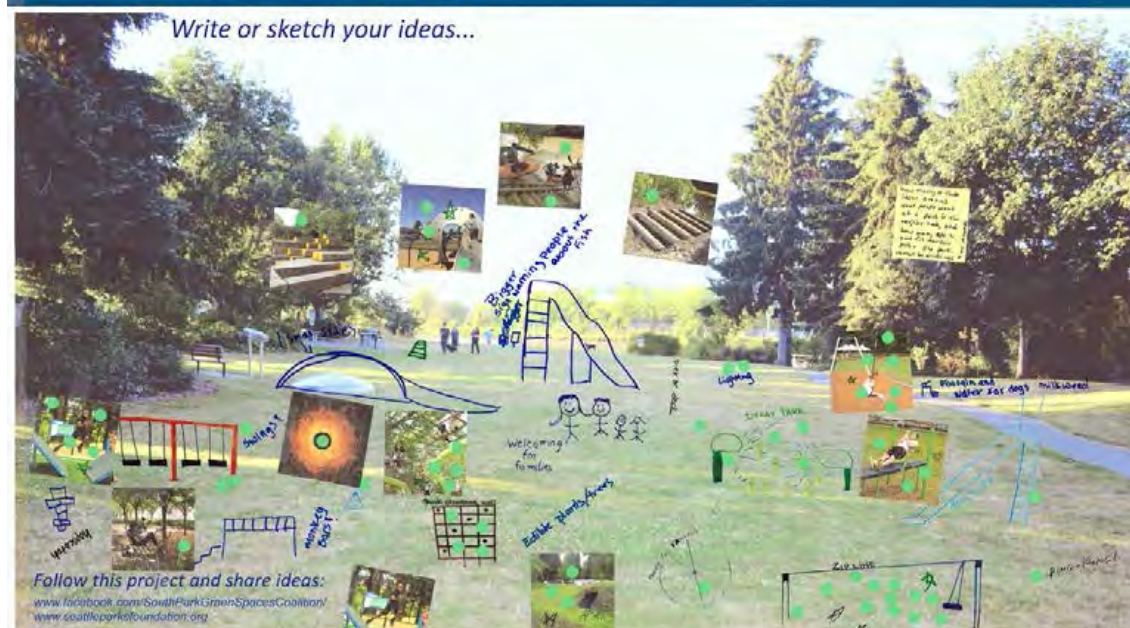
- Play features
- Nature play
- Fitness equipment
- Zipline
- Climbing wall
- Splash pad
- Ping pong
- Restrooms
- Drinking fountain
- Bike racks
- Event stage
- Outdoor movies
- Boat dock
- Fishing pier
- Fish warning sign
- Hand and foot wash
- Festival loading
- Sculptures
- More seating
- Flowering plants
- Edible plants
- Beach
- Dry pebble creek bed



Park Landscape ← NATURAL or → SCULPTED

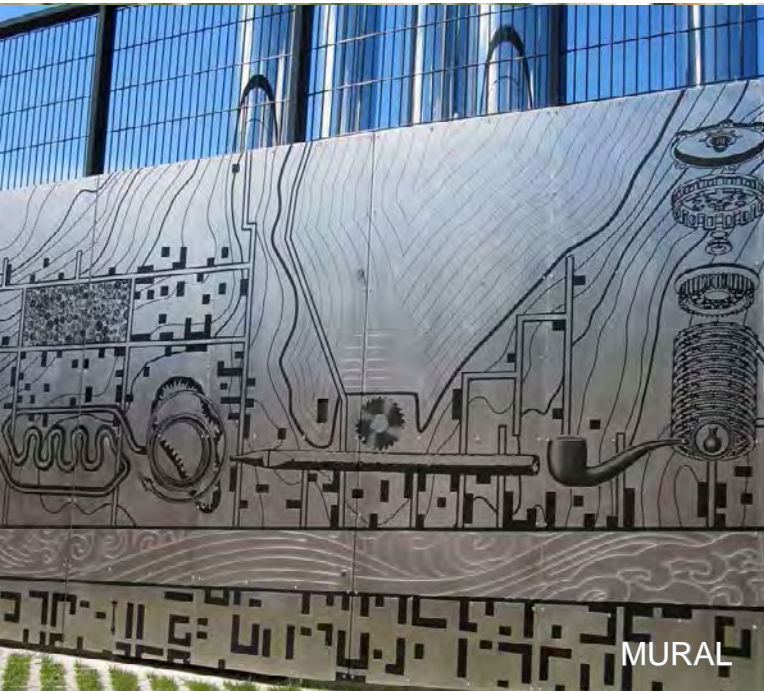


What Else Does This Park Need???





GRASSES & SEDGES



MURAL



NATURE PLAY

Preliminary Alternatives

Program Goals

Based on the Design Workshop 1 investigation, the following program goals were developed for the park:

1. Preserve open lawn for play and events
2. Maintain views of the water
3. Allow for boat launching
4. Provide play activities
5. Preserve existing trees
6. Create a healthy environment
7. Provide safety and security

Alternative Plans

Addressing the project goals and exploring several of the activities and features suggested in Design Workshop 1, three preliminary alternative plans were developed, reviewed and discussed as illustrated on the following pages.

Review of Alternatives

Seattle Parks Proview Review #1

The three preliminary alternatives were reviewed with the Seattle Parks Proview Committee prior to presentation to the public. A comments summary from this review is included in the appendix.

Seattle Department of Transportation (SDOT) Coordination

Dialogue was initiated to approach two design issues with Seattle Department of Transportation (SDOT), 1) confirming that the SDOT property along the east side of the park has been vacated and is available for park improvements, and 2) improving the Elmgrove Street right of way adjacent to the park.

Port of Seattle

Dialogue about the project was also initiated with the Port of Seattle who owns a small triangle of land within the park.

Crime Prevention Through Environmental Design (CPTED)

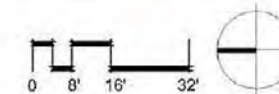
Seattle Neighborhood Group, an organization engaged in safety improvement initiatives in South Park, reviewed the preliminary alternatives for application of CPTED guidelines. Input from this review was incorporated into the final concept.

RIVER BRAIDS - Recalling the braided channel of the historic Duwamish waterway, this concept's forms establish a flowing motion from the community toward the waterway. A river walk made of pavers, plastic lumber, or metal, creates a primary circulation route along the east edge of the park, separating a large active lawn, from a smaller more passive lawn. Nature play activities sculpted from logs, rocks, and earth are nestled into flowing beds of ornamental grasses.



Alternative A

NOTES:
 LOCATION AND SIZE OF EXISTING TREES AND SITE FEATURES ARE APPROXIMATE
 IMPROVEMENTS IN SDOT RIGHT OF WAY SUBJECT TO SDOT APPROVAL



ORNAMENTAL GRASSES



ZIPLINE



RIVER WALK - PLASTIC OR COMPOSITE LUMBER

Preliminary Alternatives

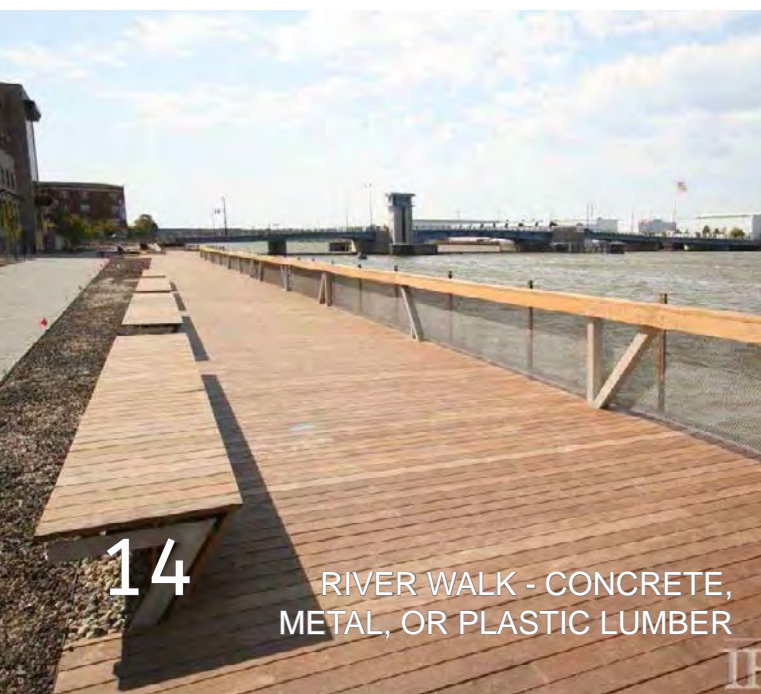
TIDAL BORE - Based on the idea of a tidal bore, a place where a river current meets a rising tide, a rippled lawn extends outward from an active play area at the south end of the site, meeting a passive and quiet river walk flowing along the river's edge. Text inlays within the river walk tell the history of the Duwamish Waterway, and river walks at additional locations along the river may continue the story.



RIPPLE LAWN



PLAY EQUIPMENT

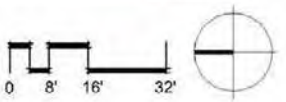


RIVER WALK - CONCRETE, METAL, OR PLASTIC LUMBER



Alternative B

NOTES:
LOCATION AND SIZE OF EXISTING TREES AND SITE FEATURES ARE APPROXIMATE
IMPROVEMENTS IN SDOT RIGHT OF WAY SUBJECT TO SDOT APPROVAL

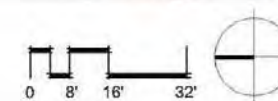


FLOTSAM - Building upon South Park's past and present industrial landscape, and the history told by items found in the waterway, this concept builds upon the character and shape of gangways, barges, and cranes contrasted by a soft palette of native riparian plants.



Alternative C

NOTES:
 LOCATION AND SIZE OF EXISTING TREES AND SITE FEATURES ARE APPROXIMATE
 IMPROVEMENTS IN SDOT RIGHT OF WAY SUBJECT TO SDOT APPROVAL



CRUSHED ROCK PATHS



CLIMBING NET



SEATING PLATFORM - PLASTIC LUMBER OR CONCRETE



Design Workshop 2

In an outdoor, open-house workshop, three preliminary alternative plans were reviewed for compliance with the goals and program developed in Design Workshop 1, and tested for their ability to accommodate current and future park uses. Participants were invited to note comments on the plans and discuss their preferences and wishes with Steering Committee members. Additionally at this

workshop, three concept plans for the nearby 12th and Elmgrove park were reviewed and discussed for coordination and design continuity with Duwamish Waterway Park.

Alternative A

Work-at-stations!
Pet-a-potty!
Adult Fitness

Like the Park!
We love the idea of 2D line 4, Kajak flag!
how do hand-carved cut across the beach from 10th Ave S especially across the grass and kayakers on

CONCEPT STATEMENT

RIVER BRAIDS - RECALLING THE BRAIDED CHANNEL OF THE HISTORIC DUWAMISH WATERWAY, THIS CONCEPT FORMS ESTABLISH A FLOWING MOTION FROM THE COMMUNITY TOWARD THE WATERWAY. A RIVER WALK MADE OF PAVERS, PLASTIC LUMBER, OR METAL CREATES A PRIMARY CIRCULATION ROUTE ALONG THE EAST EDGE OF THE PARK, SEPARATING A LARGE ACTIVE LAWN FROM A SMALLER MORE PASSIVE LAWN. NATURE PLAY ACTIVITIES SCULPTED FROM LOGS, ROCKS, AND EARTH ARE NESTLED INTO FLOWING BEDS OF ORNAMENTAL GRASSES.

CHARACTER IMAGES

GRASS BRAIDS
NATURE PLAY
RIVER WALK - PLASTIC LUMBER
RIVER WALK - PLASTIC LUMBER
BENCH
CHAIRS

Youth needs to come this park
near the

NOTES:
LOCATION AND SIZE OF EXISTING TREES AND SITE FEATURES ARE APPROXIMATE.
IMPROVEMENTS IN DOTTED RIGHT OF WAY SUBJECT TO DOTTED APPROVAL.

0 9' 18' 32'



Alternative B



CONCEPT STATEMENT

TIDAL BORE - BASED ON THE IDEA OF A TIDAL BORE, A PLACE WHERE A RIVER CURRENT MEETS A RISING TIDE. A RIPPLED LAWN EXTENDS OUTWARD FROM AN ACTIVE PLAY AREA AT THE SOUTH END OF THE SITE, MEETING A PASSIVE AND QUIET RIVER WALK FLOWING ALONG THE RIVER'S EDGE. TEXT IN LAYS WITHIN THE RIVER WALK TELL THE HISTORY OF THE DUNWASH WATERWAY AND RIVER WALKS AT ADDITIONAL LOCATIONS ALONG THE RIVER MAY CONTINUE THE STORY.

CHARACTER IMAGES



Alternative C



CONCEPT STATEMENT

FLOTSAM - BUILDING UPON SOUTH PARK'S PAST AND PRESENT INDUSTRIAL LANDSCAPE, AND THE HISTORY TOLD BY ITEMS FOUND IN THE WATERWAY. THIS CONCEPT BUILDS UPON THE CHARACTER AND SHAPE OF GANGWAYS, BARGES, AND CRANES CONTRASTED BY A SOFT PALETTE OF NATIVE RIPARIAN PLANTS.

CHARACTER IMAGES



Duwamish River Festival

Description Shortly after Design Workshop 2, the project was displayed at Duwamish River Festival at a table hosted by Seattle Parks Foundation. As one of the largest annual events held in Duwamish Waterway Park, the festival provided a large audience for the alternatives and valuable input.



Alternative A

CONCEPT STATEMENT

Go natural concept!
 RIVER BRAIDS - RECALLING THE BRAIDED CHANNEL OF THE HISTORIC DUWAMISH WATERWAY, THIS CONCEPT FORMS A FLOWING WALKWAY FROM THE COMMUNITY TOWARD THE WATERWAY. A RIVER WALK MADE OF PAVERS, PLASTIC LUMBER, OR METAL CREATES A PRIMARY CIRCULATION ROUTE ALONG THE EAST EDGE OF THE PARK, SEPARATING A LARGE ACTIVE LAWN FROM A SMALLER MORE PASSIVE LAWN. NATURE PLANT BEDS, SCULPTED FROM LEGUMES, HUCKLES, AND FERTHANE, NESTLED INTO FLOWING BEDS OF ORNAMENTAL GRASSES.

CHARACTER IMAGES

Love this nature
 Like design elements, natural, curves
 * grasses
 * play areas
 * zip line
 * Like!
 * beautiful
 * playground
 * of riparian

Duwamish Waterway Park
 South Park, Seattle

Seattle Parks and Recreation
 Seattle Neighborhoods
 Seattle Parks Foundation
 eln environments

Alternative B

CONCEPT STATEMENT
TIDAL BORE - BASED ON THE IDEA OF A TIDAL BORE, A PLACE WHERE A RIVER CURRENT MEETS A RISING TIDE, A RIPPLED LAWN EXTENDS OUTWARD FROM AN ACTIVE PLAY AREA AT THE SOUTH END OF THE SITE, MEETING A PASSIVE AND QUIET RIVER WALK FLOWING ALONG THE RIVER'S EDGE. THAT PLAYS WITHIN THE RIVER WALK TELL THE HISTORY OF THE DUWAMISH WATERWAY AND RIVER WALKS AT ADDITIONAL LOCATIONS ALONG THE RIVER MAY CONTINUE THE STORY.

CHARACTER IMAGES

DUWAMISH RIVER WALK

TIDAL BORE

Alternative C

CONCEPT STATEMENT
ELMGROVE - BUILDING UPON SOUTH PARK'S PAST AND PRESENT INDUSTRIAL LANDSCAPE, AND THE HISTORY TOLD BY TREMS FOUND IN THE WATERWAY. THIS CONCEPT BUILDS UPON THE SHAPING FEEL AND SHAPE OF ELMGROVE'S BARBERS AND GRASSY CORNERS BY A SORT OF PALETTE OF NATIVE, REFORMER PLANTS.

CHARACTER IMAGES

DUWAMISH RIVER WALK

ELMGROVE

WORKSHOP 2 & DUWAMISH RIVER FEST INPUT SUMMARY

Open lawn

Direct access from street to lawn to beach for those who drag or wheel boats

Clear route from rowing club storage to beach

Boat storage

Riverwalk along shore

Duwamish interpretive story

Climbing and spinning play structures

Zipline

Natural and manufactured play elements, with a stronger preference for manufactured equipment

Bike racks

Drinking fountain and footwash

Variety of seating in sun and shade

Water overlook

Lights (solar powered)

Thinned understory vegetation to eliminate hidden areas

Tree preservation

Removal of parking on Elmgrove adjacent to park

Curved shapes preferred over straight / angular shapes





Design Workshop 3

At Design Workshop 3, a single draft plan reflecting the previous comments and direction was presented for community review along with character images illustrating proposed design improvements. In order to increase exposure and input, the plan and accompanying images were presented at both Duwamish Waterway Park, and at the South Park Community Center in order to reach people participating in other meetings and recreational events.

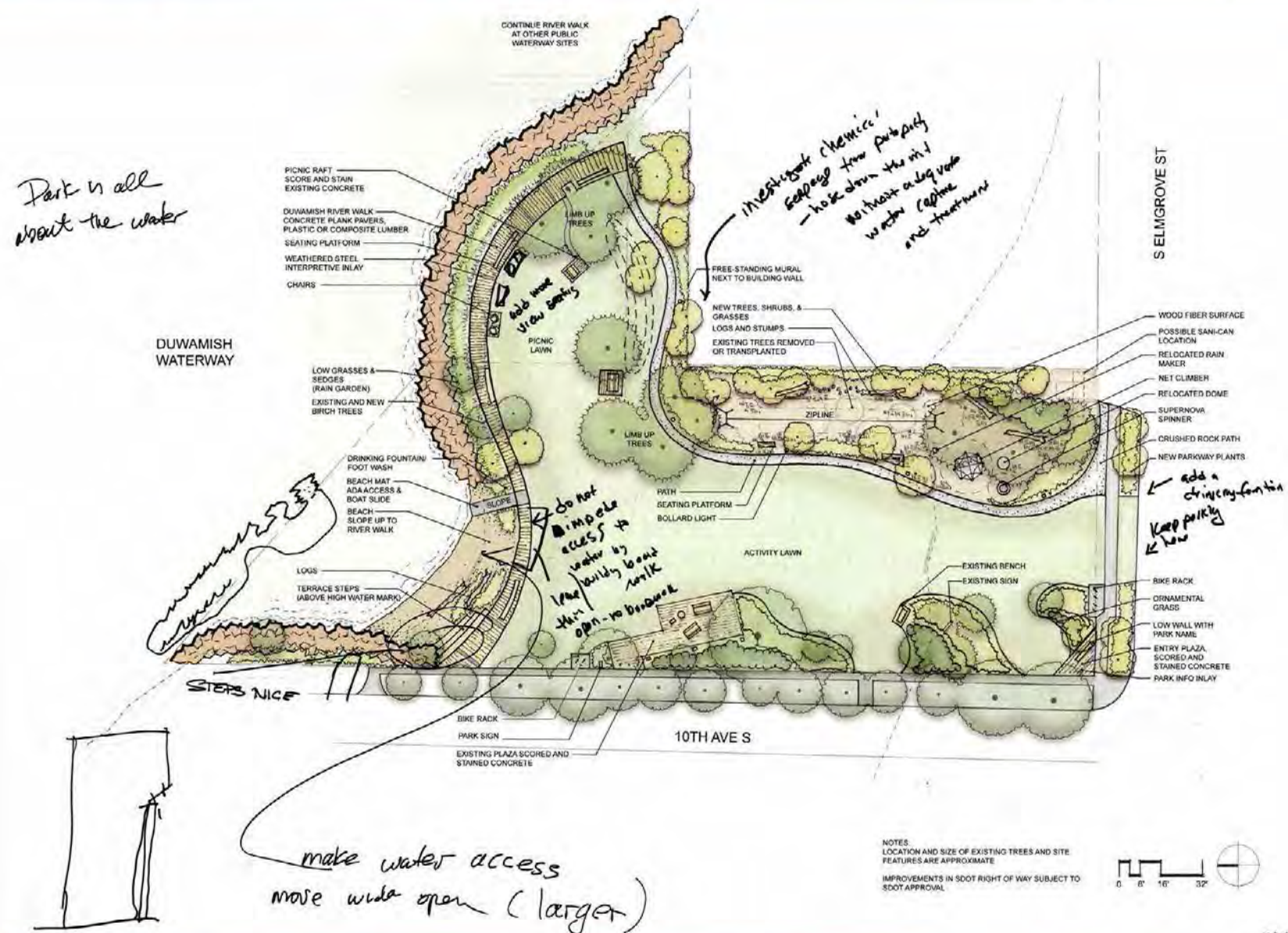
Input and comments were supportive of the design and provided preferences for materials and design features. A key topic of discussion in this workshop was the removal of existing trees in order to open access, use, and visibility along the east edge of the park creating space for new play equipment. This design move was generally supported, but should be further tested in future public outreach.

Concept Plan



Duwamish Waterway Park
South Park, Seattle

Concept Plan



Duwamish Waterway Park
South Park, Seattle



DESIGN WORKSHOP 3 SUMMARY

The river walk is classy and communicates the uniqueness of the riverfront site and South Park community

Engage students in researching and assisting with historical interpretation

Concrete is the preferred river walk material because plastic can become slippery

Yes to the rain garden

Yes to the zipline, Spaceball climber, and Supernova spinner

Yes to the drinking fountain

Ping pong table requested

Beach seating steps were appreciated and should be larger

Fruit trees were requested

Seepage from adjacent business should be investigated

Restrooms were requested

The beach mat should allow boats to turn parallel to the shore when launching

The lawn should extend to the beach

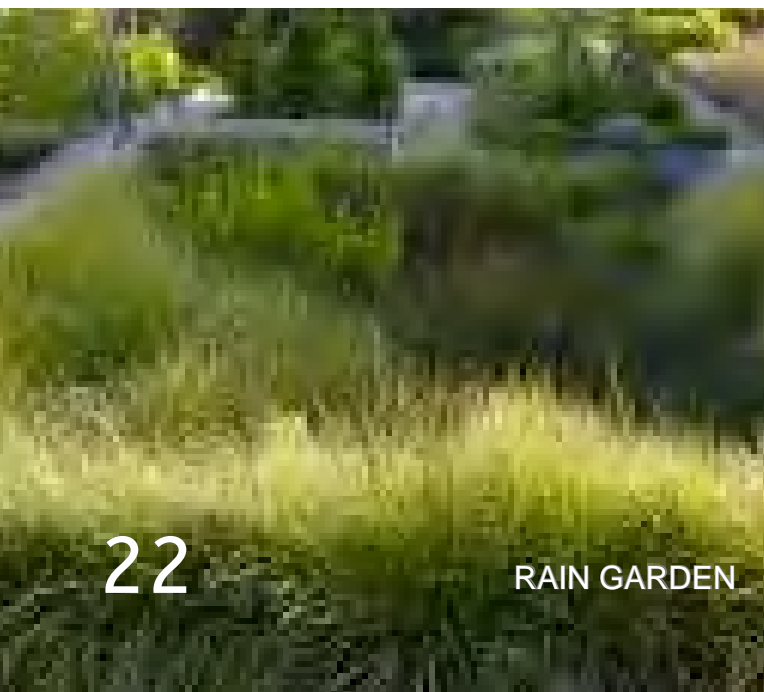




RIVER WALK INTERPRETIVE INLAY



RIVER WALK SEATING PLATFORM



RAIN GARDEN

Final Concept Plan

The culmination of this design process is a community formed plan that activates the park with new recreational uses, while preserving, highlighting, and enhancing its riverfront location and South Park context. This plan was reviewed with Seattle Parks in the project's second Proview review, and with the community in Design Workshop 3



1. River Walk

This is the place to gather and learn the storied history of Seattle's only river and the diverse people who have settled its banks in the South Park neighborhood. Within a paved walkway reminiscent of historic boardwalks and wharves, lie weathered (rusted) steel inlays engraved with historical facts and tales forming a timeline history of the river, its ecology, native people, industrialization, settlement and current environmental revival. Harnessing South Park's diverse cultures, several inlays will be crafted in the diverse languages of the neighborhood. Continuing this project's lively community effort, this timeline will be researched and scripted with student and resident leadership. Punctuated with seating platforms inviting gathering and performing, this will become the place to be.

2. Beach

A popular passive space and launch point for hand carried boats, the beach will gain wide seating steps at its steep west end, and a sloped walk at its gradual east. Seasonally, a synthetic beach mat may be installed on the slope, extending into the waterway improving accessibility, and ease of boat launching in "mucky" conditions. Near the slope, a new drinking fountain with a low hose bib attachment would provide a foot-wash to reduce sediment transport into the park, and a means to rinse the beach mat.

3. Rain Garden

Stormwater will be managed on site with a new rain garden capturing rainwater from the river walk, cleansing it and allowing infiltration. A visual enhancement to the river walk, the rain garden's sedge and rush plant palette recalls estuaries of the historic Duwamish River.

4. Playground

Responding to the recurring request for play opportunities voiced in every workshop, the design includes play features that appeal to a wide age range, meet accessibility standards, and contribute to the design character of South Park and the Duwamish Waterway. A zipline, Spaceball Climber, and Supernova Spinner along with the existing stainless steel dome and rain maker reflect the nearby industrial nature of scaffold, cranes, cargo nets and gears while sitting lightly within a landscape of native plants.

5. Open Space

The concept preserves the captivating view of the river that gives the park its character and maintains the lawn area for informal play and programmed activities. Additionally, it joins the previously disparate east and west lawns into one open and flowing space improving visual continuity, usability and security.

6. Entry Plaza

Inviting visitors, a small entry plaza at the corner of 10th Ave S. and S. Elmgrove St provides a welcoming and gathering space. Paved and furnished similar to the River Walk and illuminated with low level lighting, the plaza introduces the park's character, provides a meeting point, and a visual connection to nearby 12th and Elmgrove Park.



SPACEBALL CLIMBER



TERRACE STEPS TO BEACH



SUPERNOVA SPINNER



BEACH MAT - BOAT ACCESS



ZIPLINE



ENTRY PLAZA WALL



MURAL



SERVICEBERRY

Furnishings

Complimenting South Parks industrial and artistic character, site furnishings will embrace simple clean lines formed of steel and concrete with limited applications of wood or recycled timbers in seating platforms.

Lighting

To improve usability, safety and security, low level lighting is proposed to illuminate the primary walking surfaces. This illumination is to be provided by downward reflecting LED bollard lights which light the walking surface without visual glare or light trespass. Durable, tamper-proof and energy efficient fixtures will be employed.

Landscape Character

In order to expand the park into the SDOT Right of Way along the east edge and create space for new play features, several existing trees will be removed or transplanted. While the short-term loss will be felt, the long-term benefit is increased usable park space, a location for new play features, and improved site security and visibility. To mitigate this loss, new native, trees, shrubs and understory plants will be installed to screen and buffer views and enhance the park's character and ecological function. The plant community restores native northwest species with the addition of a few complimentary non-native species. The new palette will include visually transparent understory trees with a carpet of groundcovers. Many existing shrubs will remain, while few new shrubs will be added in order to maintain views and security.



BOLLARD LIGHT



PACIFIC DOGWOOD

Representative Plant Species

TREES

Bigleaf maple
Cascara
Flowering dogwood
Pacific dogwood
Paper birch
Serviceberry
Vine maple

SHRUBS

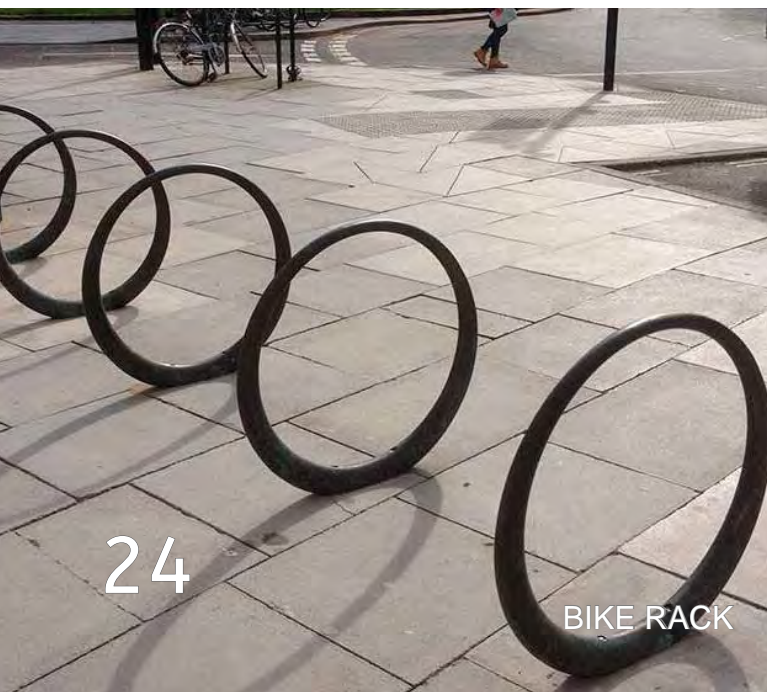
Evergreen huckleberry
Low Oregon grape
Lucida spirea
Oregon box

GROUNDCOVERS

Bunchberry
Lady fern
Salal
Sea thrift
Tufted hair grass
Wild ginger
Wood sorrel

RAIN GARDEN

Blue-eyed grass
Common rush
Dewey's sedge
Oregon iris
Slough sedge



BIKE RACK



OREGON GRAPE AND WILD GINGER

What is not in the plan..

This project's outreach process yielded many great ideas, more than can be accommodated in this park. To create this design, each suggestion was tested for its compliance with the park's existing uses, the project's goals, and maintenance cost. Several recreational facilities such as soccer fields and a boat house were determined to conflict with the park's passive character and public access. Several facilities such as restrooms and a splash pad were widely requested but excluded from the design due to high maintenance costs.

The Duwamish River Walk Expansion

With the improvements proposed in Duwamish Waterway Park, lies an opportunity to expand the proposed river walk and interpretive inlays to additional waterfront sites in South Park including 12th and Elmgrove, the Rose Street end, and South Park Plaza. Inland, Dallas Street, which outlines the historic water's edge location could be enhanced with a streetscape similar to the river walk character. Here interpretation would illustrate the massive scale of the river channelization, and the significance of its re-alignment. Together these interventions form the basis of a self-guided tour and discovery of the river, highlighting its rich history, ecology, industry, and cultures.





Budget

Opinion of Probable Cost

The following is a preliminary opinion of probable cost to construct the Duwamish Waterway Park Concept. This cost is based on anticipated construction in 2017, and should be updated once a survey of the site is obtained, and the design is further developed.

Item	Cost
Site Preparation, demo, erosion control	\$ 21,918
Earthwork	\$ 10,971
Beach steps, slope, and access mat	\$ 40,380
Riverwalk paving and seating	\$150,612
Crushed rock path	\$ 15,406
Play equipment and surface	\$102,095
Entry Plaza	\$ 8,238
Furnishings	\$ 20,522
Artwork mural	\$ 29,000
Drinking fountain and footwash	\$ 12,123
Site lighting	\$ 31,659
Elmgrove right of way improvement	\$ 16,992
Planting	\$ 116,945
Total	\$ 576,861

Funding

The initial community engagement and design exploration housed in this document were funded through the generous donation of time and expertise by members of the Friends of Duwamish Waterway Park, South Park Residents, and professional services provided by ELM Environments landscape architects funded by a Seattle Department of Neighborhoods “Small and Simple” grant matched by Seattle Parks Foundation which enabled the outreach and design embodied in this report.

The anticipated next step is to apply for a Small and Simple grant to fund continued community outreach, engagement of students in the project, and development of bidding and permitting documents. Parallel with this effort will be the pursuit of construction funding and the following are potential sources to be investigated.

- Private philanthropy - individuals and foundations
- Seattle Dept. of Neighborhoods-Neighborhood Matching Fund Large Project Fund <http://www.seattle.gov/neighborhoods/programs-and-services/neighborhood-matching-fund/large-projects-fund>
- King County Youth Sports Facilities Grant Fund - typically focused on sports facilities, but may be a possibility <http://www.kingcounty.gov/services/parks-recreation/parks/get-involved/partnerships-and-grants/ysfg.aspx>
- U.S. Dept. of Housing and Urban Development Community Development Block Grant Program http://portal.hud.gov/hudportal/HUD?src=/program_offices/comm_planning/communitydevelopment/programs
- Washington Recreation and Conservation Office - potential funding sources could include: Boating Facilities Program, Land and Water Conservation Fund, No Child Left Inside, Washington Wildlife Recreation Program <http://www.rco.wa.gov/%5C/grants/index.shtml>
- 4Culture - a granting program for arts and heritage funding <http://www.4culture.org/calendar/index.htm>
- Seattle Foundation <https://www.seattlefoundation.org/>
- Kaboom! - a playground granting organization <https://kaboom.org/>
- Community fundraising - car wash, sales, festival etc.

Implementation

Phasing

Constructing the entire project at one time will allow the greatest economy of scale and cost savings in document preparation, permitting, bidding and construction. However, if necessary, the design may be constructed in two phases of roughly similar cost, recognizing that funding may become available through a variety of sources under differing timelines. Either phase may be constructed first, and demolition, earthwork and planting scope would be divided between the two.

Two possible phases are:

Playground phase - Play equipment, site furnishings, artwork, entry plaza, lighting, planting, Elmgrove street improvements

Riverwalk phase - River walk, paths, beach improvements, drinking fountain footwash

Next Steps

To continue the momentum gathered by this project and bring it into construction, the following initiatives will need to be advanced:

1. Develop a Funding Strategy - A written strategy identifying funding sources, potential amounts, and timelines.
2. Develop a Project Schedule - Building upon the funding strategy, a schedule should project the time necessary for design, outreach, agency approvals, permitting, bidding and construction.
3. Obtain a Memorandum of Agreement between Seattle Parks and Seattle Department of Transportation, and between Seattle Parks and the Port of Seattle for improvements on portions of the parkland owned by these two agencies.
4. Obtain a topographic survey for the site including property lines, easements, utilities, topography, and the ordinary high water mark. At the time of this writing, a topographic survey is being prepared by Seattle Parks.
5. Obtain a geotechnical investigation for the site which will advise on pavement and footing design, and storm water infiltration
6. Determine with the land holder agencies if additional site investigation is necessary for cultural resources or environmental contamination.
7. Inform adjacent property owners of the proposed park improvements. Note, invitations to workshops were sent, but contact has not yet been made.
8. Continue community outreach including: student led research for the river walk interpretation, and one public workshop to review the park layout on site and ongoing web updates.
9. Finalize the design and prepare bidding and permitting drawings and specifications.
10. Complete Seattle Parks Proview technical review concurrent with bidding and permitting drawing preparation, and review maintenance requirements related to park improvements.
11. Initiate permit applications discussed earlier in this report.
12. Obtain construction bids.
13. Construct the project, minimizing impact to summer use season and planned events.
14. Introduce the Duwamish River Walk concept in public meetings for other parks and street improvements with the intent of expanding the idea.





Appendix

Project Initiators (Steering Committee)

Friends of Duwamish Waterway Park

Meredith Hall, SPARC Board President

Paulina Lopez, Duwamish River Cleanup Coalition

Robin Schwartz, South Park PTA

Refugio Martinez

Bill Pease, Environmental Coalition of South Seattle

Jessica Miller, Duwamish Rowing Club

Brad Cerenzia

Nancy Zugschwerdt

Jake Hellenkamp – Steering Committee Project Manager

Project Sponsors



Seattle Parks and Recreation
Pamela Kliment – Project Manager



Seattle Department of Neighborhoods
Ed Pottharst – Project Manager



Seattle Parks Foundation
Michelle Benetua – Project Manager

Consultant



elm environments Landscape Architects
Chris Overdorf – Principal in Charge
Greg Murphy – Project Manager
Callie Roberts – Project Designer

Organizations

This project benefited from participation or representation from the following groups:

Environmental Coalition of South Seattle

Concord School PTA

South Park Retail Merchants Association

South Park Seniors

South Park Area Redevelopment Committee

South Park Neighborhood Association

All About South Park Blog

South Park Arts

South Park Design Lab

Duwamish River Cleanup Coalition

Sea Mar Community Health Center

Marra Farm

South Park Information and Resource Center

Duwamish Valley Youth Corps

Amigos de Seattle

Duwamish Rowing Club

Workshop Participants

This project is the result of the creativity, insight and enthusiasm contributed by the friends and neighbors who interacted in its workshops:

Beyna Angel	Carmen Martinez
Magdalena Angel	Tatiana Martinez Interiano
William Arriola	Dora Martinez
Johnnie Baker	Miguel Martinez
Jeff Bettger	Dan McClure
Jaen Bomer C	Noelle McClure
Margarita Cano	Helena Mendez
Farah Clinch	Mike Merta
Arturo Contreras	Erin Murphy
Daniela Cortez	Tari Nelson - Zagar
Patricia Cortez	Lourdes Pasten
Carolina Espinoza	Nico Peter - Lopez
Rosalba Garcia	Roxana Rivera
Noel German	Vladimir Rivera
Jim Glassley	Violet Saklana
Dan Hall	Sage Saskill
Arfon Hassan	Carson Spaulding
Juan Hernandez	Larry Spaulding
Maria Hernandez	Dawn Spiker
Omar Hernandez	Echo Stupka
Ami Ingram	Peaches Thomas
Nathan James	Randy Wiger
Maria Lopez	

Seattle Parks Proview Review

Build ADA accessibility into the plans starting now and stress access

If there's a small boat launching area it must be ADA accessible

Consider adding automatic irrigation for the site, consider cost impact and consult Schollmeyer

Make sure new plants being introduced are low maintenance and require minimum irrigation.

Limit the amount of planting beds needing maintenance

Avoid edible plants: there are major issues with rats

Rethink using the area behind the neighboring complex for the tot play area for safety reasons

Keep sightlines as open as possible- SPD patrol cars should be able to see as much as possible when driving past

Do not install a tot play area near the road: large trucks pass through this industrial area often

Consider installing barriers to keep children away from the road

Do not install wooden play structures - too much maintenance

Consider using concrete whenever possible instead of wood, which deteriorates quickly and requires too much maintenance

DO NOT propose a dock, wooden or not, would cost too much both to install and to maintain

DO NOT propose a spray feature or restroom which would cost too much both to install and to maintain

If adding walls of any sort, know that graffiti is very likely to happen in this area, so design accordingly

When sharing plans with the public, show a range of development and be clear that the budget has not yet been set

Manage public expectation by staying mindful of how we present information to the public

Do not overpromise: give the public a very clear and realistic idea of which new elements may be feasible with cost. Do not show a restroom, spray park or dock.

If showing a wish list, a.k.a. "what we want," Do not put it on the same page as plans or official looking documents

Don't give people hope - be definitive with saying no. Don't say maybe if the item in question is cost-prohibitive

Contact the Seattle Police Department and ask for a CPTED analysis

Consider contacting Seattle Neighborhood Group for CPTED analysis

Have a very broad cost estimate range in your mind at the meeting so you can respond in relative terms as necessary

Ask for "recommendations" from the community- welcome input, but stress that final decisions are made in the Parks Dept.

Adding a comfort station is not feasible due to maintenance cost.

Try to determine which elements would be the highest priorities for this community at the meeting

Determine the true need for a play area and play structures in this community

Emphasize waterfront access when planning for this park- it is a unique feature of this park

Go forward with the idea of a Zipline, but be mindful of how much space it would take from the proposed play area



